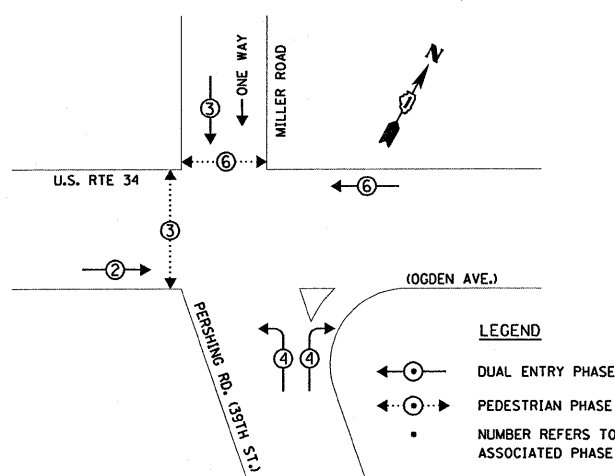
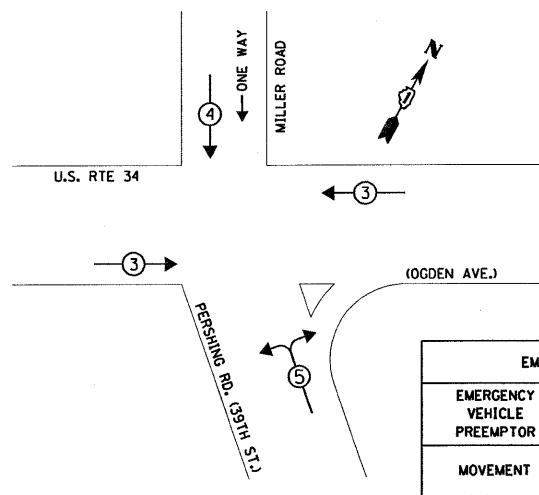


CONTROLLER SEQUENCE



PHASE DESIGNATION DIAGRAM

EMERGENCY VEHICLE PREEMPTION SEQUENCE



EMERGENCY VEHICLE PREEMPTOR			
EMERGENCY VEHICLE PREEMPTOR	3	4	5
MOVEMENT	←→	↓	↙↘

SCHEDULE OF INTERSECTION QUANTITIES

QUANTITY	UNIT	ITEM
103	SO FT	PORTLAND CEMENT CONCRETE SIDEWALK, 5 INCH
103	SO FT	SIDEWALK REMOVAL
48	SO FT	DETECTABLE WARNINGS
26	FOOT	COMBINATION CURB AND GUTTER REMOVAL
26	FOOT	COMBINATION CONCRETE CURB AND GUTTER, TYPE B-6.24
160	FOOT	THERMOPLASTIC PAVEMENT MARKING - LINE 12"
119	FOOT	THERMOPLASTIC PAVEMENT MARKING - LINE 24"
1	EACH	MAINTENANCE OF EXISTING TRAFFIC SIGNAL INSTALLATION
1	EACH	UNINTERRUPTIBLE POWER SUPPLY
4	EACH	PEDESTRIAN SIGNAL HEAD, L.E.D., 1-FACE, BRACKET MOUNTED WITH COUNTDOWN TIMER
5	EACH	SIGNAL HEAD, L.E.D., 1-FACE, 3-SECTION, MAST ARM MOUNTED
2	EACH	SIGNAL HEAD, L.E.D., 1-FACE, 4-SECTION, MAST ARM MOUNTED
3	EACH	SIGNAL HEAD, L.E.D., 1-FACE, 3-SECTION, BRACKET MOUNTED
2	EACH	SIGNAL HEAD, L.E.D., 1-FACE, 4-SECTION, BRACKET MOUNTED
2	EACH	SIGNAL HEAD, L.E.D., 2-FACE, 3-SECTION, BRACKET MOUNTED
1	EACH	REMOVE EXISTING TRAFFIC SIGNAL EQUIPMENT
4	EACH	PEDESTRIAN PUSH BUTTONS

FOUNDATION (DEPTH)	FT. (m)	CABLE SLACK	FT. (m)	VERTICAL	FT. (m)
TYPE A - POST	4 (1.2)	HANDHOLE	6.5 (2.0)	ALL FOUNDATIONS	3.5 (1.0)
D - CONTROLLER	4 (1.2)	DOUBLE HANDHOLE	13 (4.0)	MAST ARM (L) POLE	20' HL - 2" (6m HL - 0.6m)
E - M. ARM POLE	2 (0.6)	SIGNAL POST	2 (0.6)	BRACKET MOUNTED	13 (4.0)
24" (600mm)	10 (3.0)	CONTROLLER CAB.	1 (0.5)	PED. PUSHBUTTON	4 (1.2)
30" (750mm)	15 (4.6)	FIBER OPTIC	13 (4.0)	ELECTRIC SERVICE	13.5 (4.1)
		ELECTRIC SERVICE	1 (0.5)	SERVICE TO GROUND	13.5 (4.1)
		GROUND CABLE	1 (0.5)	POST MOUNTED	6 (1.8)

I.D.O.T. TRAFFIC SIGNAL INSTALLATION ELECTRICAL SERVICE REQUIREMENTS					TOTAL WATTAGE
TYPE	NO. LAMPS	WATTAGE INCAND.	LED	% OPERATION	
SIGNAL (RED)	16	17	0.50		136.00
(YELLOW)	16	25	0.25		100.00
(GREEN)	20	15	0.25		75.00
ARROW	-	12	0.10		-
PED. SIGNAL	4	25	1.00		100.00
CONTROLLER	1	100	1.00		100.00
ILLUM. SIGN	-	-	0.05		-
FLASHER	-	-	0.05		-
ENERGY COSTS TO:			TOTAL=		511.00

ENERGY SUPPLY CONTACT: JUANITA VEIGELT
 PHONE: (815) 724-5657
 COMPANY: COMMONWEALTH EDISON

FILE NAME =	USER NAME = kanthaphixaybo	DESIGNED - TCM/BPR	REVISED - 09/08/2009 PER IDOT
DESIGNED - TCM/BPR	DRAWN - TCM/BPR	CHECKED - TCM	DATE - 07/02/2009

DESIGNED - TCM/BPR	REVISED - 09/08/2009 PER IDOT
DRAWN - TCM/BPR	REVISED -
CHECKED - TCM	REVISED -
DATE - 07/02/2009	REVISED -

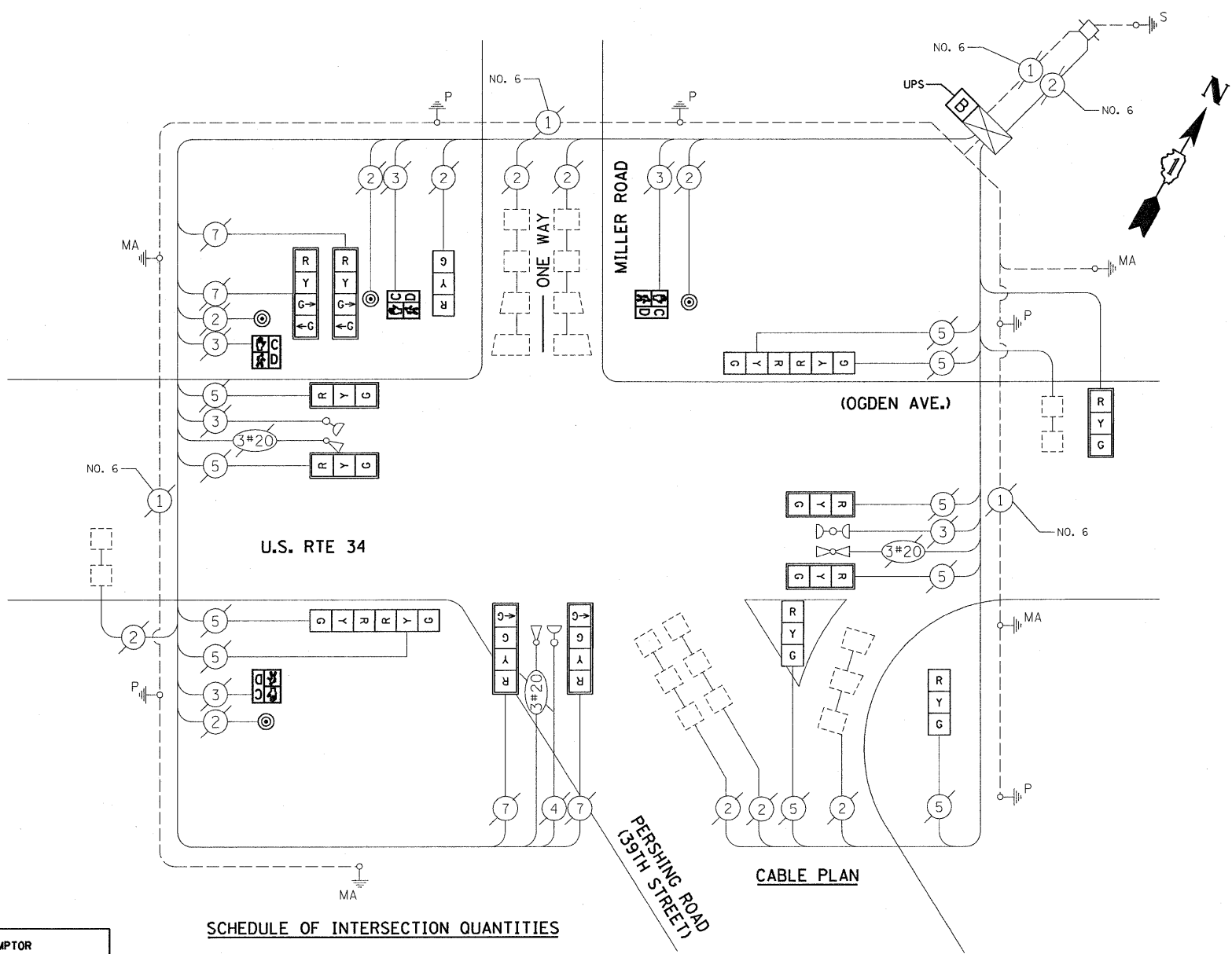
STATE OF ILLINOIS DEPARTMENT OF TRANSPORTATION

SCHEDULE OF QUANTITIES, CABLE PLAN, PHASE DESIGNATION DIAGRAM AND EMERGENCY VEHICLE PREEMPTION SEQUENCE
 U.S. RTE 34 (OGDEN AVE.) AT PERSHING ROAD (39TH STREET)/MILLER ROAD
 SCALE: NTS SHEET NO. OF SHEETS STA. TO STA.

F.A.P. RTE. 348	SECTION 2009 078 TS	COUNTY COOK	TOTAL SHEETS 33	SHEET NO. 23
CONTRACT NO. 60115				
FED. ROAD DIST. NO. ILLINOIS FED. AID PROJECT				

CABLE PLAN LEGEND

PROPOSED	EXISTING	DESCRIPTION
(G)	(G)	8" (200mm) TRAFFIC SIGNAL SECTION
(R)	(R)	12" (300mm) TRAFFIC SIGNAL SECTION
(W)	(W)	12" (300mm) PEDESTRIAN SIGNAL SECTION
(A)	(A)	12" (300mm) PEDESTRIAN SIGNAL SECTION
(C)	(C)	CONTROLLER CABINET
(S)	(S)	SERVICE INSTALLATION
(T)	(T)	TELEPHONE CONNECTION
(M)	(M)	MAGNETIC DETECTOR
(P)	(P)	PUSHBUTTON DETECTOR
(V)	(V)	VEHICLE DETECTOR, INDUCTION LOOP
(2)	(2)	2 DENOTES NUMBER OF CONDUCTORS. ALL CABLE NO. 14 EXCEPT AS INDICATED. ALL LOOP DETECTOR CABLE TO BE SHIELDED.
(R)	(R)	SIGNAL FACE WITH BACKPLATE. "P" INDICATES PROGRAMMED HEAD
(E)	(E)	RAILROAD CONTROL CABINET
(E)	(E)	ILLUMINATED SIGN, FIBER OPTIC "NO LEFT TURN"
(E)	(E)	ILLUMINATED SIGN, FIBER OPTIC "NO RIGHT TURN"
(H/C)	(H/C)	GROUND ROD AT HANDHOLE, DOUBLE HANDHOLE, OR CONTROLLER
(P)	(P)	GROUND ROD AT POST OR MAST ARM POLE
(S)	(S)	GROUND ROD AT ELECTRIC SERVICE INSTALLATION
(1)	(1)	GROUND CABLE IN CONDUIT NO. 6 SOLID COPPER (GREEN)
(24)	(24)	FIBER OPTIC CABLE IN CONDUIT NO.62.5/125 2-MM12F & 5M12F
(M)	(M)	MICROWAVE VEHICLE SENSOR
(V)	(V)	VIDEO DETECTOR
(C)	(C)	CLOSED CIRCUIT TV
(A)	(A)	EMERGENCY VEHICLE LIGHT DETECTOR
(B)	(B)	CONFIRMATION BEACON
(U)	(U)	UNINTERRUPTIBLE POWER SUPPLY
(P)	(P)	PEDESTRIAN SIGNAL HEAD WITH COUNTDOWN TIMER



CABLE PLAN

10:36:51 11/09/2009