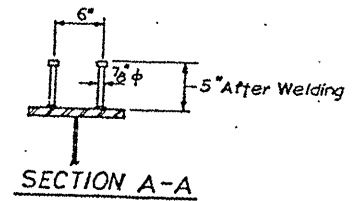
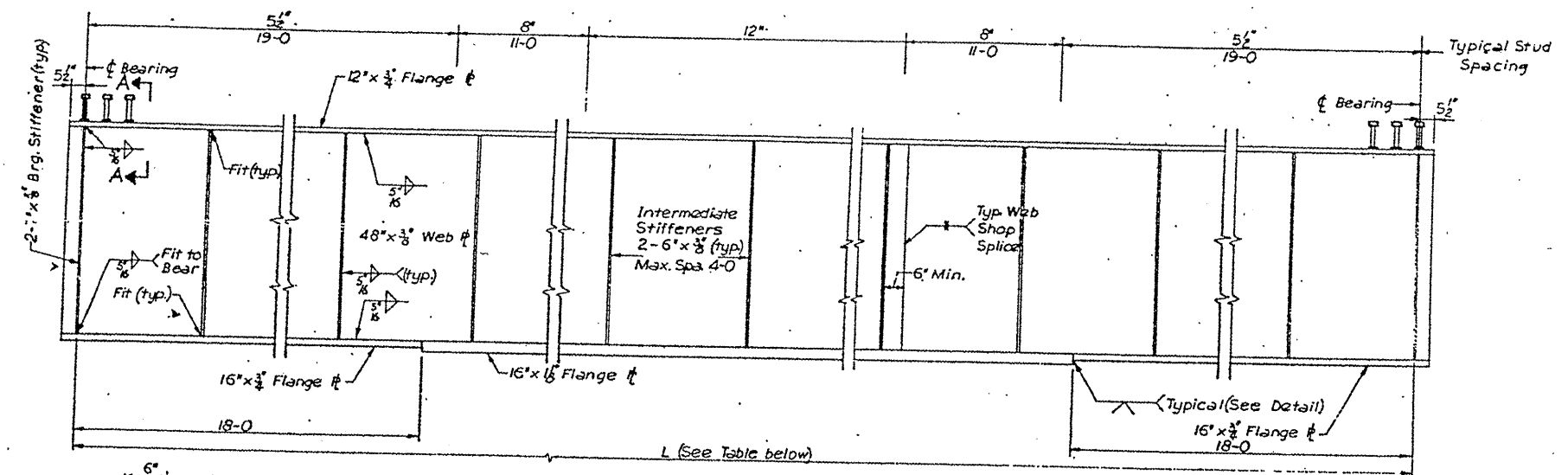


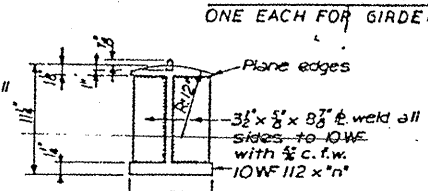
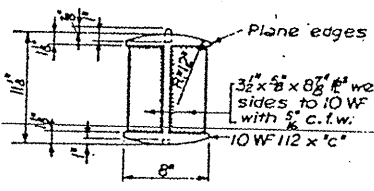
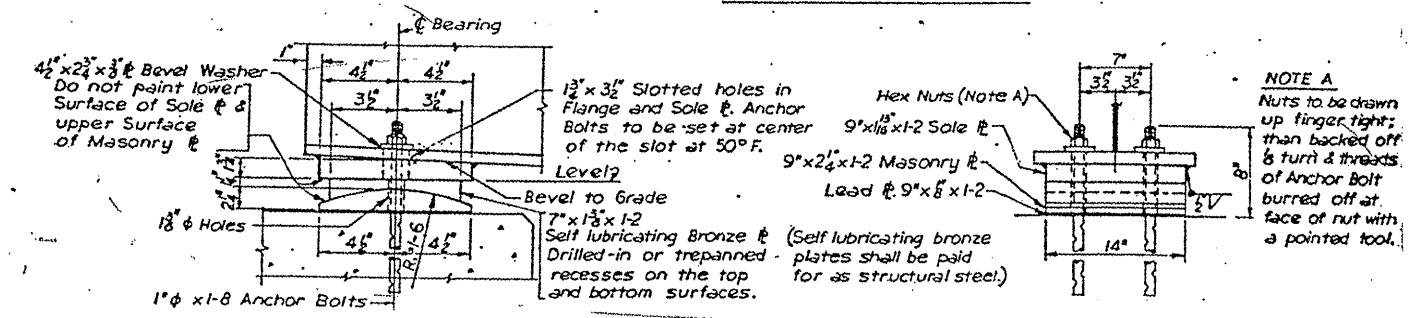
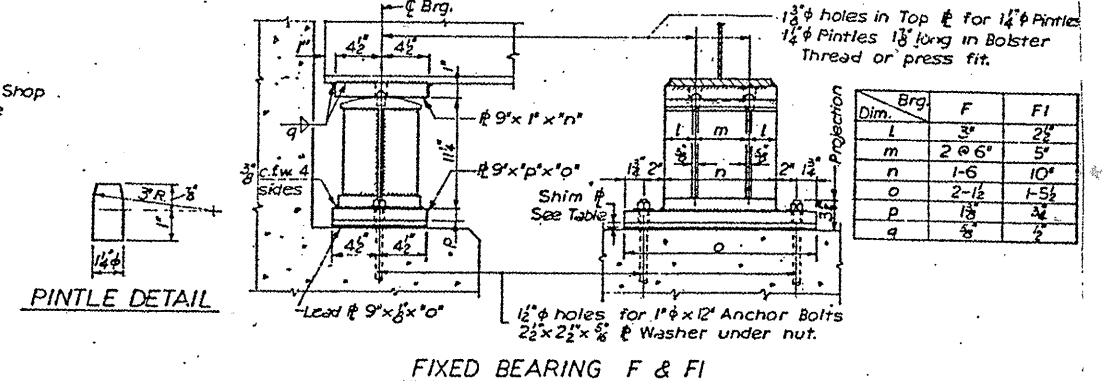
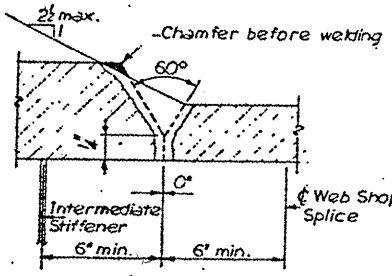
Contract 60116

FOR INFORMATION ONLY



Girder or WF	AT EAST ABUTMENT				AT WEST ABUTMENT				L (Span φ to Bearing)	Shape	
	Station on Grand Ave. perpendicular to φ Brg.	Angle b/n. Girder and Pt. of Tang. φ Brg.	Elev. Top of Web or WF	Type of Brg.	Station on Grand Ave. perpendicular to φ Brg.	Angle b/n. Girder and Pt. of Tang. φ Brg.	Elev. Top of Web or WF	Type of Brg.			
1E	5+84.28	76°26'07"	627.39	FI	-	-	-	-	6-4 1/2	24 WF 68	
2E	5+86.18	76°31'01"	627.47	FI	-	-	-	-	15-4 1/2		
3E	5+88.06	76°35'54"	627.57	FI	-	-	-	-	9-4		
4E	5+89.93	76°40'48"	627.66	FI	-	-	-	-	12-4 1/2		
2W	-	-	-	-	6+64.73	76°41'56"	628.76	EI	-	-	
3W	-	-	-	-	6+66.58	76°46'45"	628.91	EI	-	-	
4W	-	-	-	-	6+68.43	76°51'34"	629.02	EI	-	-	
5	5+91.79	76°45'41"	627.71	F	6+70.26	76°56'24"	629.07	E	-	Non-Comp. Girder, See Sh. 17	
6	5+93.63	76°50'34"	627.88	F	6+72.08	77°01'13"	629.22	E	-	Composite Girder, See above	
7	5+95.47	76°55'27"	627.99	F	6+73.89	77°06'02"	629.34	E	-	-	
8	5+97.29	77°00'20"	628.07	F	6+75.69	77°10'50"	629.48	E	-	-	
9	5+99.10	77°05'13"	628.15	F	6+77.47	77°15'39"	629.60	E	-	-	
10	5+99.79	77°07'04"	628.19	F	6+78.15	77°17'29"	629.64	E	-	-	
11	6+01.58	77°11'57"	628.29	F	6+79.92	77°22'18"	629.74	E	-	-	
12	6+03.37	77°16'50"	628.39	F	6+81.68	77°27'06"	629.85	E	-	-	
13	6+05.14	77°21'42"	628.49	F	6+83.43	77°31'55"	629.95	E	-	-	
14	6+06.90	77°26'35"	628.59	F	6+85.16	77°36'43"	630.05	E	-	-	
15	6+08.65	77°31'27"	628.56	F	6+86.89	77°41'32"	630.01	E	-	-	
16	6+10.38	77°36'19"	628.52	F	6+88.60	77°46'20"	629.97	E	-	-	
17	6+12.11	77°41'12"	628.48	F	6+90.30	77°51'08"	629.94	E	-	-	
18	6+13.82	77°46'04"	628.45	F	6+91.99	77°55'56"	629.90	E	-	-	
19	6+14.47	77°47'55"	628.43	F	6+92.63	77°57'46"	629.89	E	-	-	
20	6+16.17	77°52'47"	628.36	F	6+94.30	78°02'34"	629.78	E	-	-	
21	6+17.85	77°57'39"	628.28	F	6+95.97	78°07'21"	629.68	E	-	-	
22	6+19.53	78°02'31"	628.12	F	6+97.62	78°12'09"	629.57	E	-	-	
23	6+21.19	78°07'22"	628.02	F	6+99.26	78°16'57"	629.47	E	-	Non-Comp. Girder, See Sh. 17	
24E	6+22.84	78°12'14"	627.98	FI	-	-	-	-	11-4 1/2	24 WF 68	
25E	6+24.48	78°17'05"	627.89	FI	-	-	-	-	7-10 1/2		
24W	-	-	-	-	7+00.88	78°21'44"	629.31	EI	-	17-5 1/2	
25W	-	-	-	-	7+02.50	78°26'32"	629.17	EI	-	14-8 1/2	
26W	-	-	-	-	7+04.10	78°31'19"	629.05	EI	-	12-0 1/2	
27W	-	-	-	-	7+05.70	78°36'07"	628.91	EI	-	9-3	
28W	-	-	-	-	7+07.28	78°40'54"	628.78	EI	-	6-5 1/2	

NOTE: Shop Flange Splices permitted only at changes in flange thickness.



ILLINOIS DEPARTMENT OF TRANSPORTATION  
EXISTING BRIDGE PLAN  
SN 049-0118  
(LOC. 2)