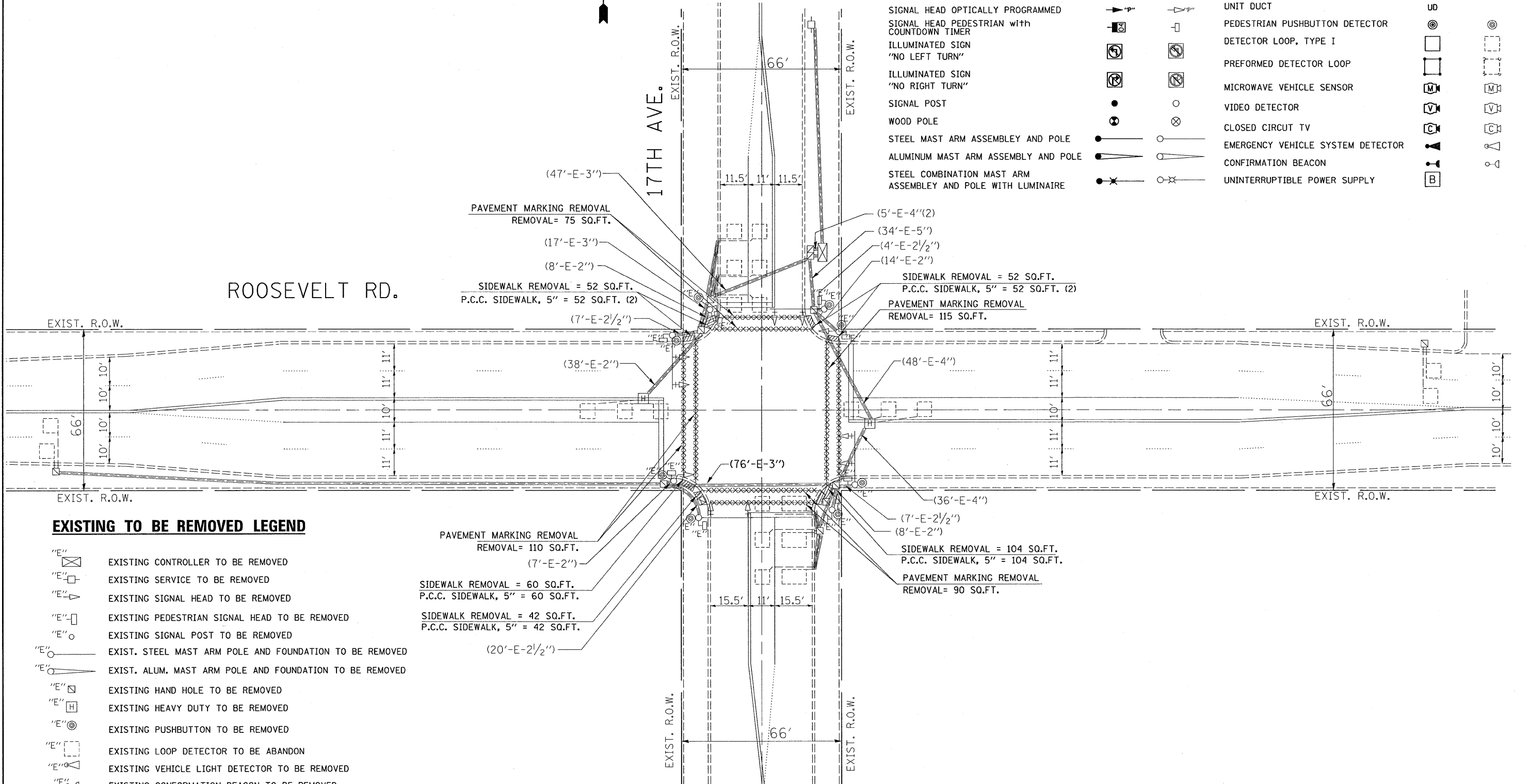
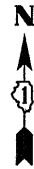


THE FOLLOWING ITEMS SHALL BE REMOVED BY THE CONTRACTOR AND SHALL BE DISPOSED OF BY THEM OUTSIDE THE RIGHT-OF-WAY AT THEIR EXPENSE. THE SALVAGE VALUE OF THE REMOVED EQUIPMENT SHALL BE REFLECTED IN THE CONTRACT BID PRICE.

- 8 EACH PEDESTRIAN SIGNAL HEADS
- 8 EACH PEDESTRIAN PUSHBUTTONS

**TRAFFIC SIGNAL LEGEND**

	PROPOSED	EXISTING		PROPOSED	EXISTING
CONTROLLER CABINET			JUNCTION BOX		
RAILROAD CONTROL CABINET			HANDHOLE		
SERVICE INSTALLATION, (P) POLE OR (G) GROUND MOUNT			HEAVY DUTY HANDHOLE		
TELEPHONE CONNECTION			DOUBLE HANDHOLE		
SIGNAL HEAD			G.S. CONDUIT IN TRENCH OR PUSHED		
SIGNAL HEAD WITH BACKPLATE			COMMON TRENCH	CT	
SIGNAL HEAD OPTICALLY PROGRAMMED			UNIT DUCT	UD	
SIGNAL HEAD PEDESTRIAN with COUNTDOWN TIMER			PEDESTRIAN PUSHBUTTON DETECTOR		
ILLUMINATED SIGN "NO LEFT TURN"			DETECTOR LOOP, TYPE I		
ILLUMINATED SIGN "NO RIGHT TURN"			PREFORMED DETECTOR LOOP		
SIGNAL POST			MICROWAVE VEHICLE SENSOR		
WOOD POLE			VIDEO DETECTOR		
STEEL MAST ARM ASSEMBLY AND POLE			CLOSED CIRCUIT TV		
ALUMINUM MAST ARM ASSEMBLY AND POLE			EMERGENCY VEHICLE SYSTEM DETECTOR		
STEEL COMBINATION MAST ARM ASSEMBLY AND POLE WITH LUMINAIRE			CONFIRMATION BEACON		
			UNINTERRUPTIBLE POWER SUPPLY		



**EXISTING TO BE REMOVED LEGEND**

	EXISTING CONTROLLER TO BE REMOVED
	EXISTING SERVICE TO BE REMOVED
	EXISTING SIGNAL HEAD TO BE REMOVED
	EXISTING PEDESTRIAN SIGNAL HEAD TO BE REMOVED
	EXISTING SIGNAL POST TO BE REMOVED
	EXIST. STEEL MAST ARM POLE AND FOUNDATION TO BE REMOVED
	EXIST. ALUM. MAST ARM POLE AND FOUNDATION TO BE REMOVED
	EXISTING HAND HOLE TO BE REMOVED
	EXISTING HEAVY DUTY TO BE REMOVED
	EXISTING PUSHBUTTON TO BE REMOVED
	EXISTING LOOP DETECTOR TO BE ABANDON
	EXISTING VEHICLE LIGHT DETECTOR TO BE REMOVED
	EXISTING CONFIRMATION BEACON TO BE REMOVED

PAVEMENT MARKING REMOVAL  
REMOVAL= 75 SQ.FT.

(17'-E-3'')

(8'-E-2'')

SIDEWALK REMOVAL = 52 SQ.FT.  
P.C.C. SIDEWALK, 5" = 52 SQ.FT. (2)

(7'-E-2 1/2'')

(38'-E-2'')

(76'-E-3'')

(20'-E-2 1/2'')

PAVEMENT MARKING REMOVAL  
REMOVAL= 115 SQ.FT.

(5'-E-4'')(2)

(34'-E-5'')

(4'-E-2 1/2'')

(14'-E-2'')

SIDEWALK REMOVAL = 52 SQ.FT.  
P.C.C. SIDEWALK, 5" = 52 SQ.FT. (2)

(48'-E-4'')

(36'-E-4'')

(7'-E-2 1/2'')

(8'-E-2'')

SIDEWALK REMOVAL = 104 SQ.FT.  
P.C.C. SIDEWALK, 5" = 104 SQ.FT.

PAVEMENT MARKING REMOVAL  
REMOVAL= 90 SQ.FT.

05:12:06 11/06/2009