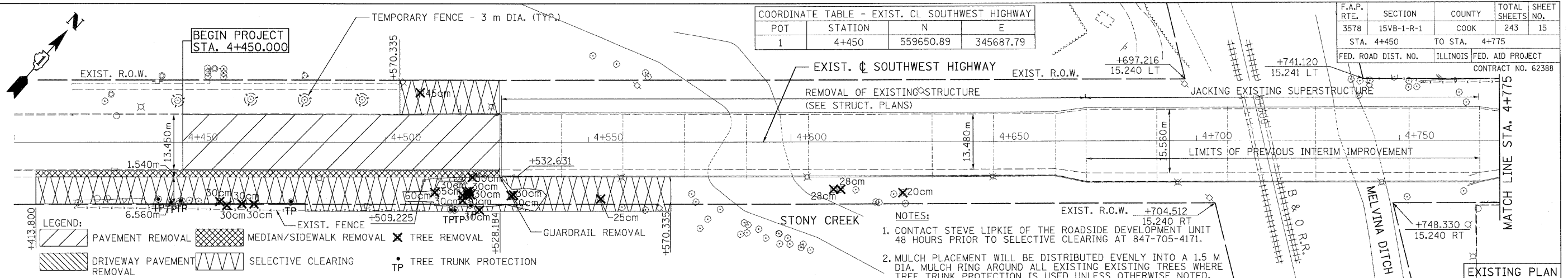
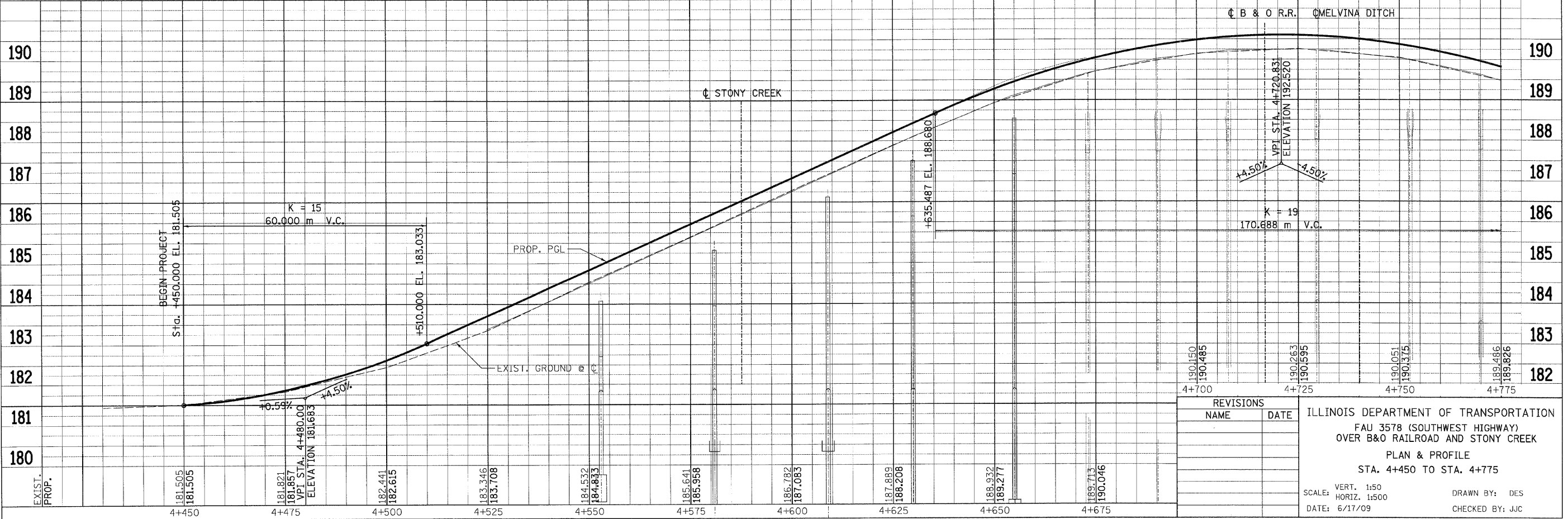
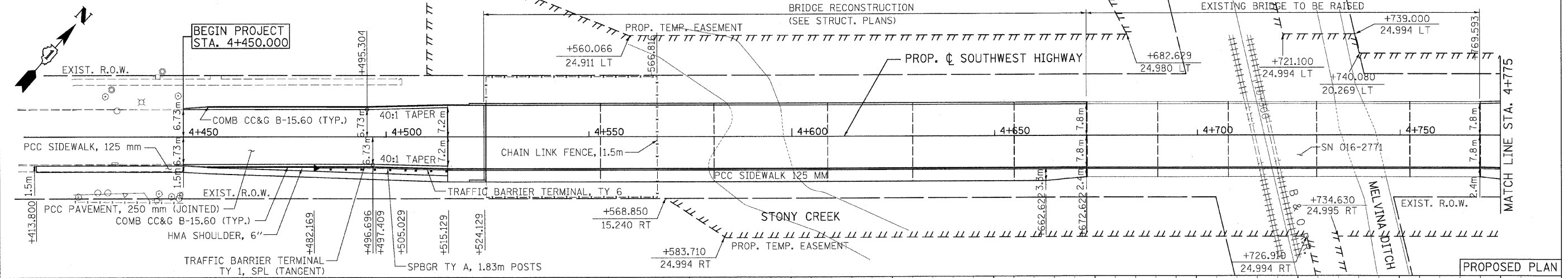


F.A.P. RTE.	SECTION	COUNTY	TOTAL SHEETS	SHEET NO.
3578	15V8-1-R-1	COOK	243	15
STA. 4+450		TO STA. 4+775		
FED. ROAD DIST. NO.		ILLINOIS	FED. AID PROJECT	
CONTRACT NO. 62388				

COORDINATE TABLE - EXIST. CL SOUTHWEST HIGHWAY			
POT	STATION	N	E
1	4+450	559650.89	345687.79



NOTES:
 1. CONTACT STEVE LIPKIE OF THE ROADSIDE DEVELOPMENT UNIT 48 HOURS PRIOR TO SELECTIVE CLEARING AT 847-705-4171.
 2. MULCH PLACEMENT WILL BE DISTRIBUTED EVENLY INTO A 1.5 M DIA. MULCH RING AROUND ALL EXISTING TREES WHERE TREE TRUNK PROTECTION IS USED UNLESS OTHERWISE NOTED.



REVISIONS	
NAME	DATE

ILLINOIS DEPARTMENT OF TRANSPORTATION
 FAU 3578 (SOUTHWEST HIGHWAY)
 OVER B&O RAILROAD AND STONY CREEK
 PLAN & PROFILE
 STA. 4+450 TO STA. 4+775

SCALE: VERT. 1:50
 HORIZ. 1:500
 DATE: 6/17/09
 DRAWN BY: DES
 CHECKED BY: JJC

tkooppen(Rawy_Liste) 6/26/2009 1:33:17 AM PDF(Grey_Large).plt O:\DOT\9556_A0\Drawings\RDWY\shrs\rd\N_S_PP_01.dgn

