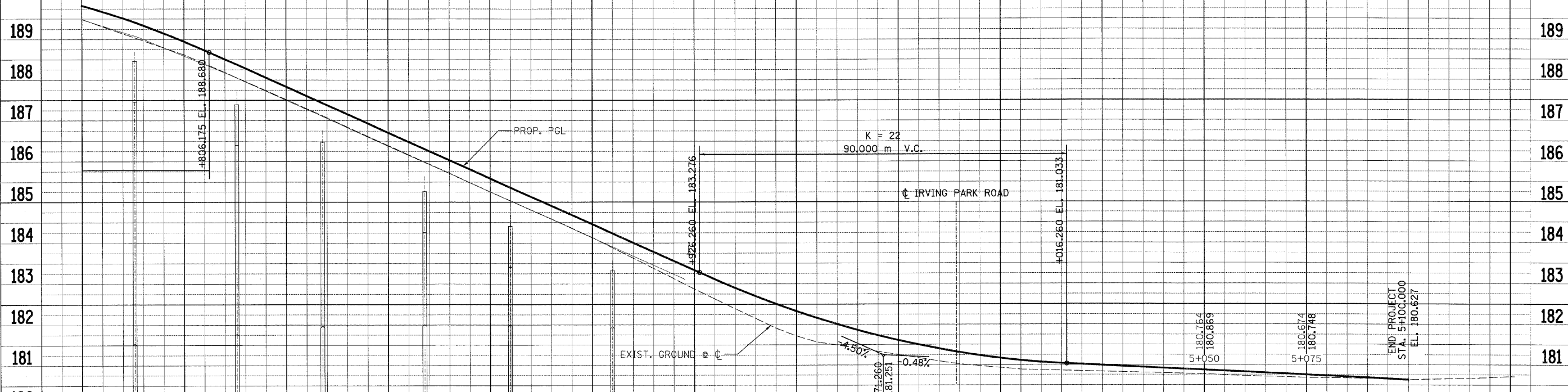
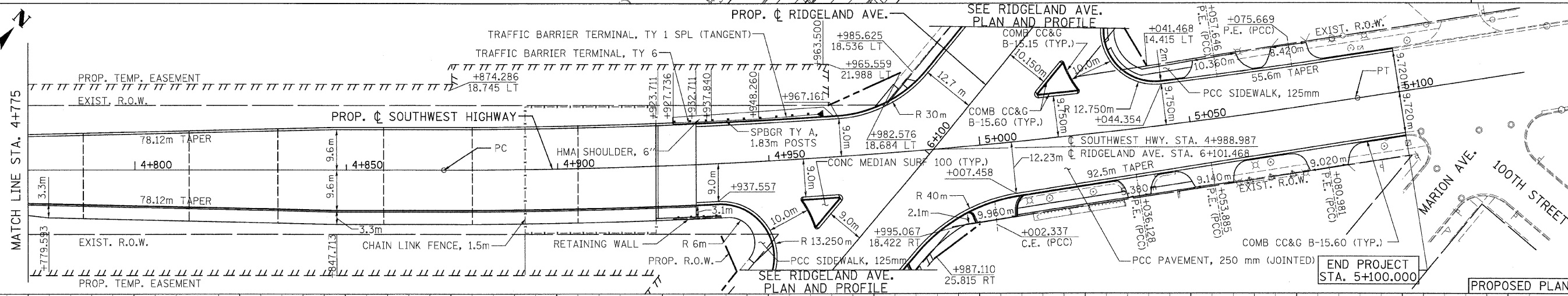
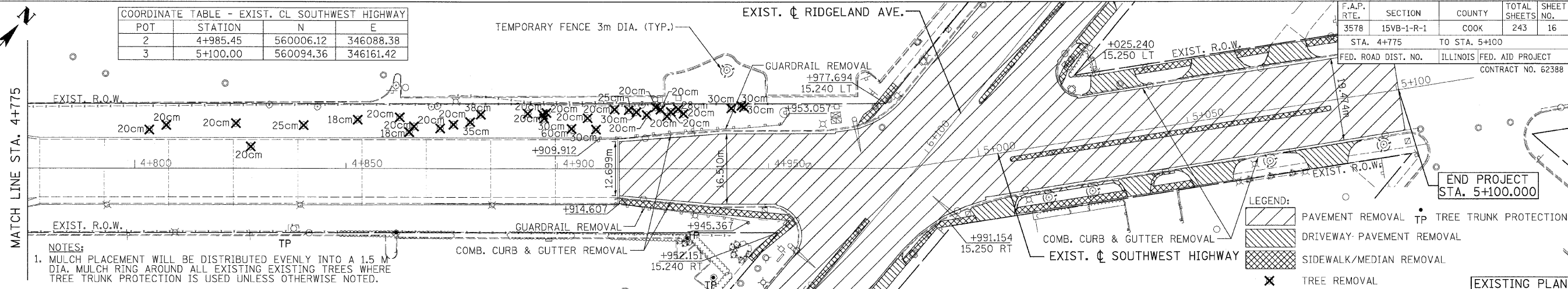


COORDINATE TABLE - EXIST. CL SOUTHWEST HIGHWAY			
POT	STATION	N	E
2	4+985.45	560006.12	346088.38
3	5+100.00	560094.36	346161.42

F.A.P. RTE.	SECTION	COUNTY	TOTAL SHEETS	SHEET NO.
3578	15VB-1-R-1	COOK	243	16
STA. 4+775		TO STA. 5+100		
FED. ROAD DIST. NO.		ILLINOIS FED. AID PROJECT		
		CONTRACT NO. 62388		



REVISIONS	
NAME	DATE

ILLINOIS DEPARTMENT OF TRANSPORTATION
 FAU 3578 (SOUTHWEST HIGHWAY)
 OVER B&O RAILROAD AND STONY CREEK
 PLAN & PROFILE
 STA. 4+775 TO STA. 5+100

SCALE: VERT. 1:50
 HORIZ. 1:500
 DATE: 5-08-2009

DRAWN BY: DES
 CHECKED BY: JJC

tkoeppen(Rdwy_Lisle) 6/26/2009 10:33:24 AM PDF(Grey_Large).plt 0:\DOT\9556_A0\Drawings\RDWY\shs\RD\N\S_PP_02.dgn
PATRICK ENGINEERING INC.
 ILLINOIS