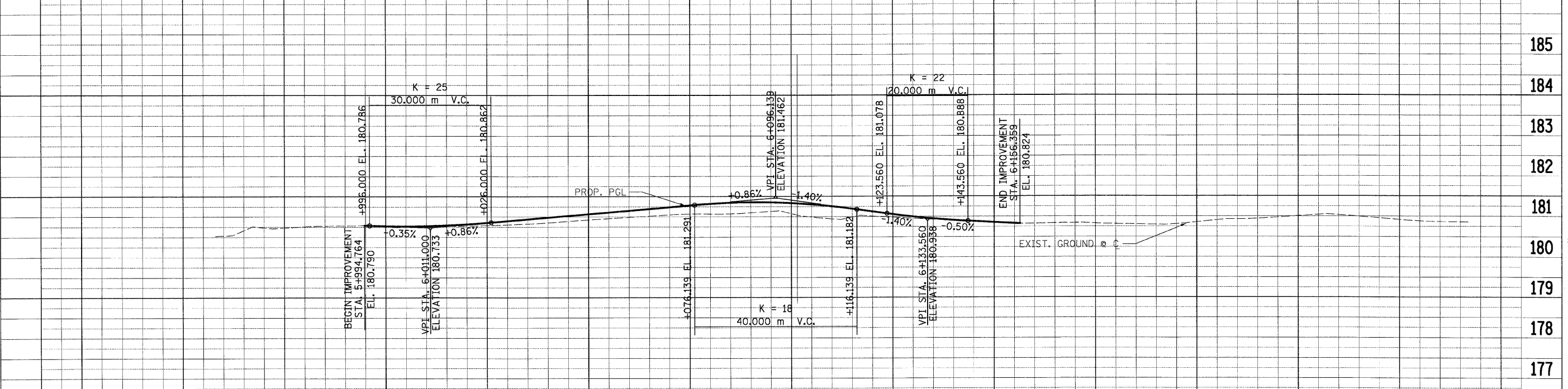
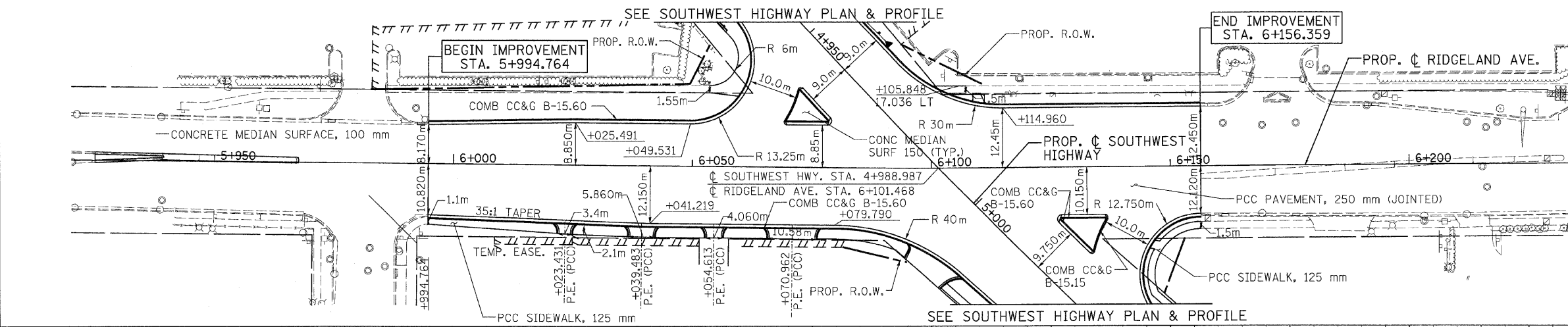
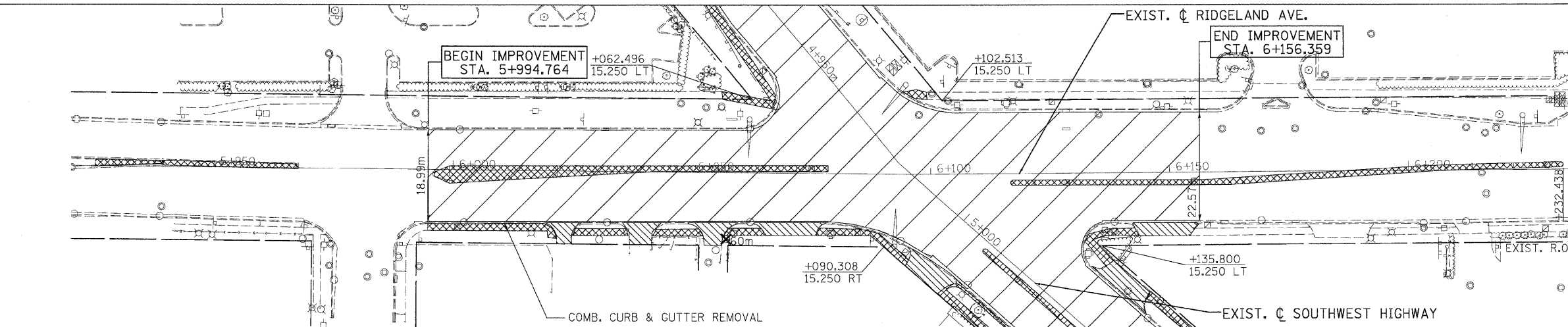


t:koepfen(Rdwy_Lisie) 6/26/2009 1:33:32 AM PDF(Grey_Large).plt Q:\DOT\9556_A0\Drawings\RDWY\shrs\RD\S_PP_03_Rgind.dgn

F.A.P. RTE.	SECTION	COUNTY	TOTAL SHEETS	SHEET NO.
3578	15VB-1-R-1	COOK	243	17
STA. 5+994.764		TO STA. 6+156.359		
FED. ROAD DIST. NO.		ILLINOIS FED. AID PROJECT		
CONTRACT NO. 62388				



REVISIONS	
NAME	DATE

ILLINOIS DEPARTMENT OF TRANSPORTATION
 FAU 3578 (SOUTHWEST HIGHWAY)
 OVER B&O RAILROAD AND STONY CREEK
 PLAN & PROFILE (RIDGELAND)
 STA. 5+994.764 TO STA. 6+156.359

SCALE: VERT. 1:50
 HORIZ. 1:500
 DATE: 6/17/09

DRAWN BY: DES
 CHECKED BY: JJC