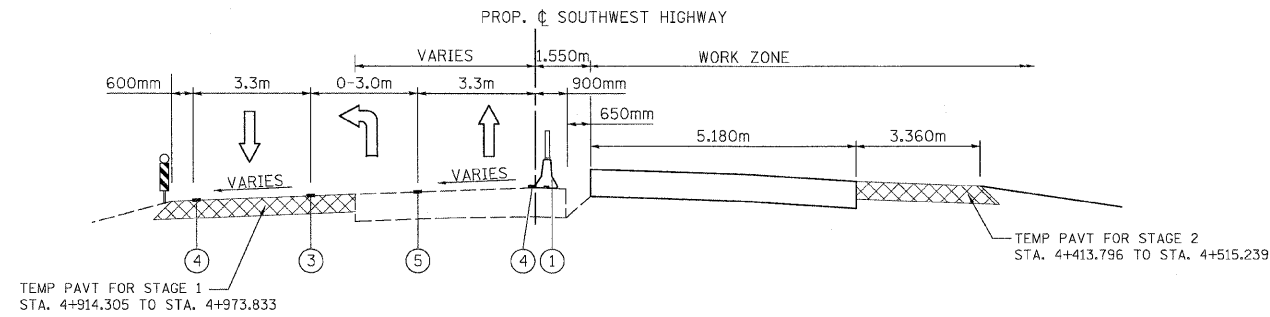


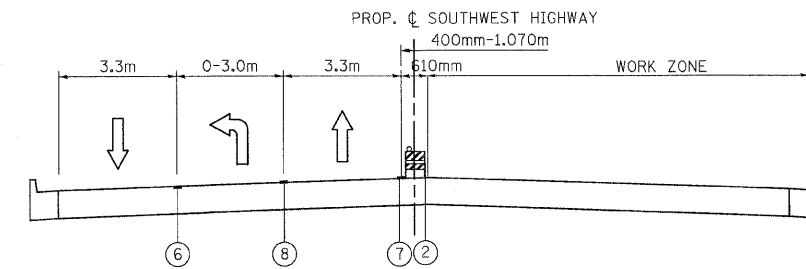
F.A.U. RTE.	SECTION	COUNTY	TOTAL SHEETS	SHEET NO.
3578	15VB-1-R-1	COOK	243	20
STA.		TO STA.		
FED. ROAD DIST. NO.		ILLINOIS FED. AID PROJECT		
CONTRACT NO. 62388				



**STAGE 1 CONSTRUCTION**

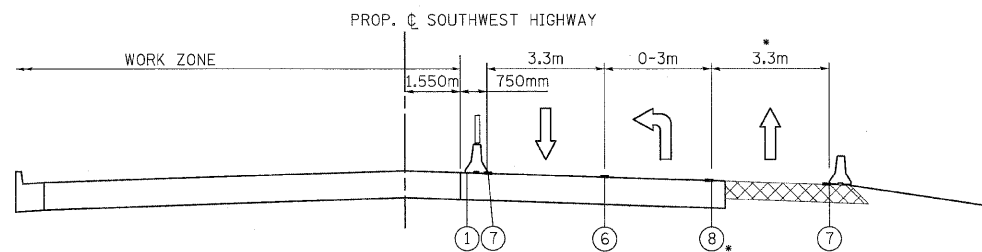
STA. 4+450.000 TO STA. 4+524.129  
 STA. 4+923.711 TO STA. 4+932.718

NOTE: SEE BRIDGE STAGING PLANS FOR  
 STA. 4+524.129 TO STA. 4+923.711



**STAGE 3B CONSTRUCTION**

STA. 4+987.253 TO STA. 5+100.000

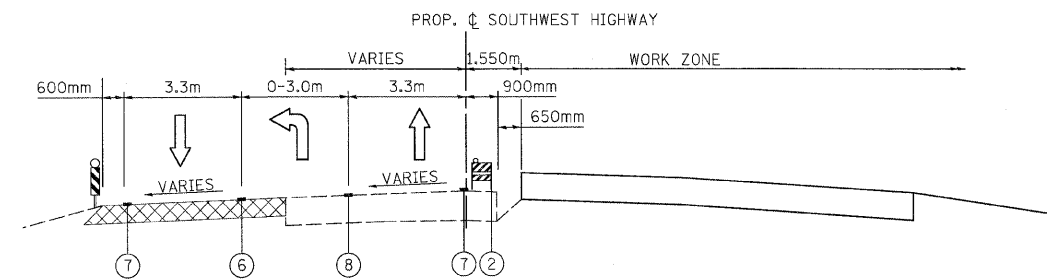


**STAGE 2 CONSTRUCTION**

STA. 4+450.000 TO STA. 4+524.129  
 STA. 4+923.711 TO STA. 4+932.718

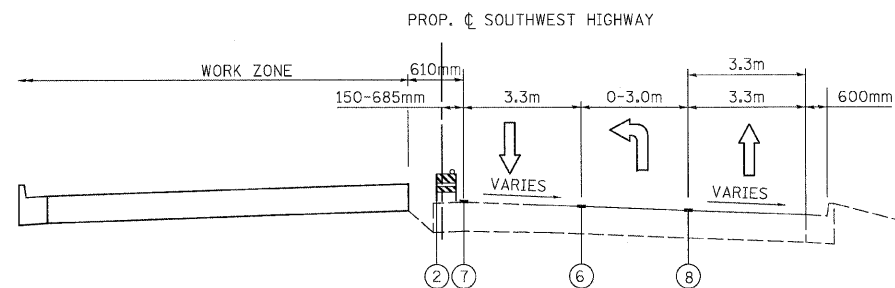
NOTE: SEE BRIDGE STAGING PLANS FOR  
 STA. 4+524.129 TO STA. 4+923.711

CONSTRUCT SIDEWALK AND C&G FROM  
 STA. 4+413.800 TO STA. 4+524.129 &  
 STA. 4+923.711 TO STA. 4+932.718 DURING  
 STAGE 5 USING IDOT STANDARD 701606-04  
 FOR A LANE CLOSURE



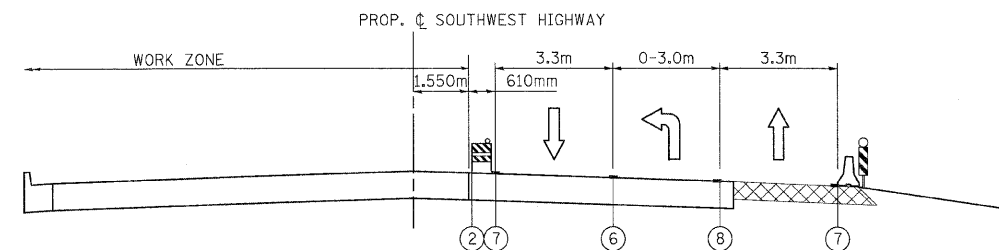
**STAGE 4A CONSTRUCTION**

STA. 4+932.718 TO STA. 4+987.253



**STAGE 3A CONSTRUCTION**

STA. 4+987.253 TO STA. 5+100.000



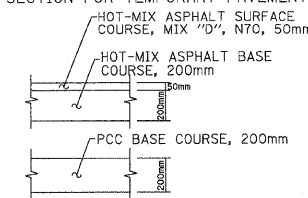
**STAGE 4B CONSTRUCTION**

STA. 4+932.718 TO STA. 4+987.253

**LEGEND**

- ① TEMPORARY CONCRETE BARRIER
- ② TYPE II BARRICADES OR DRUMS WITH STEADY BURNING LIGHTS (15 m C-C, 7.5 m @ TAPERS & 3.5 m ALONG RADII)
- ③ TEMP PAVT MK LINE, 100 mm (DOUBLE YELLOW)
- ④ TEMP PAVT MK LINE, 100 mm (WHITE EDGE LINE)
- ⑤ TEMP PAVT MK LINE, 150 mm (WHITE)
- ⑥ WET REFLECTIVE TEMPORARY TAPE, TYPE III, 100 mm (DOUBLE YELLOW)
- ⑦ WET REFLECTIVE TEMPORARY TAPE, TYPE III, 100 mm (WHITE EDGE LINE)
- ⑧ WET REFLECTIVE TEMPORARY TAPE, TYPE III 150 mm (WHITE)
- ⑨ WET REFLECTIVE TEMPORARY TAPE, TYPE III (SP) 100 mm YELLOW W/ 100mm YELLOW 3m DASH - 9m SKIP
- MODULAR GLARE SCREEN, TEMPORARY
- TEMPORARY PAVEMENT
- VERTICAL PANELS @ 15m C-C WITH STEADY BURNING LIGHTS

**TEMPORARY PAVEMENT DETAILS**  
 (CONTRACTOR HAS THE OPTION OF USING HMA OR PCC SECTION FOR TEMPORARY PAVEMENT)



REVISIONS	
NAME	DATE

ILLINOIS DEPARTMENT OF TRANSPORTATION  
 FAU 3578 (SOUTHWEST HIGHWAY) OVER B&O RAILROAD AND STONY CREEK  
 SUGGESTED STAGING OF CONSTRUCTION & TRAFFIC CONTROL  
 SOUTHWEST HIGHWAY

SCALE: NONE  
 DATE: 6/17/09  
 DRAWN BY: CPK  
 CHECKED BY: DES