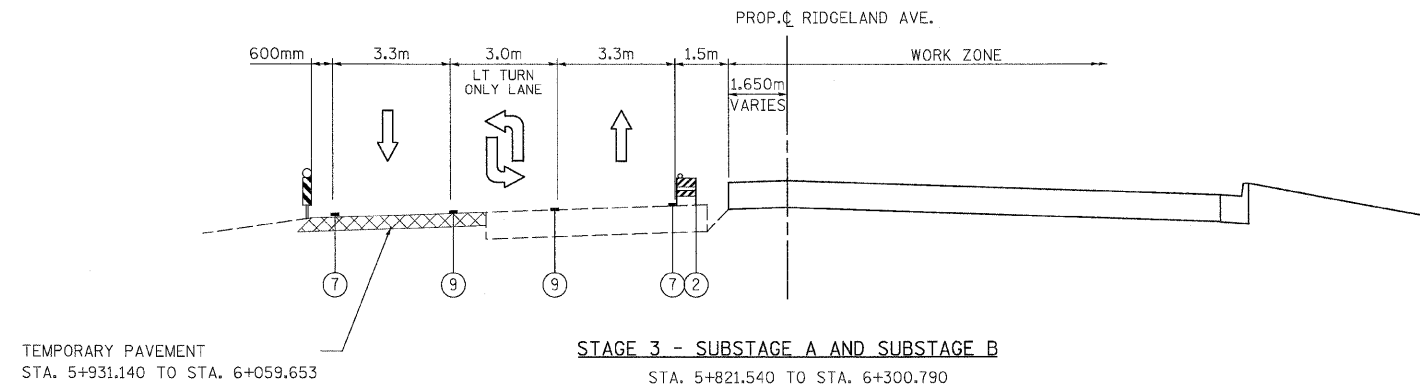
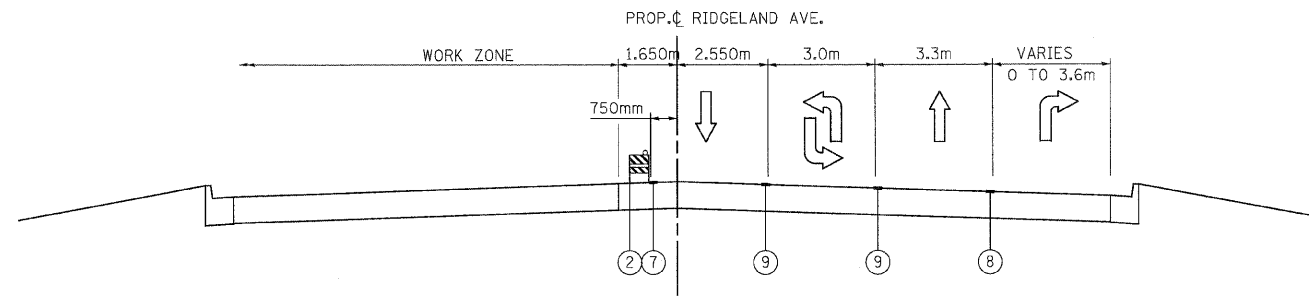


F.A.U. RTE.	SECTION	COUNTY	TOTAL SHEETS	SHEET NO.
3578	15VB-1-R-1	COOK	243	21
STA.		TO STA.		
FED. ROAD DIST. NO.	ILLINOIS	FED. AID PROJECT		
CONTRACT NO. 62388				



NOTE: FOR SUBSTAGE B, THE LANE CONFIGURATION IS SHIFTED ALONG SOUTHWEST HIGHWAY WHILE THE LANE CONFIGURATION ALONG RIDGELAND AVE. REMAINS THE SAME AS SUBSTAGE A.



NOTE: FOR SUBSTAGE B, THE LANE CONFIGURATION IS SHIFTED ALONG SOUTHWEST HIGHWAY WHILE THE LANE CONFIGURATION ALONG RIDGELAND AVE. REMAINS THE SAME AS SUBSTAGE A.

**LEGEND**

- |   |  |
|---|--|
| ① TEMP CONCRETE BARRIER   | ⑦ PAVT MKG TAPE, TYPE III, 100 mm (WHITE EDGE LINE)                              |
| ② TYPE II BARRICADES OR DRUMS WITH STEADY BURNING LIGHTS (15 m C-C, 7.5 m @ TAPERS & 3.5 m ALONG RADII) | ⑧ PAVT MKG TAPE, TYPE III 150 mm (WHITE)   |
| ③ TEMP PAVT MK LINE, 100 mm (DOUBLE YELLOW)   | ⑨ PAVT MKG TAPE, TYPE III (SP) 100 mm YELLOW W/ 100mm YELLOW 10' DASH - 30' SKIP |
| ④ TEMP PAVT MK LINE, 100 mm (WHITE EDGE LINE)   | MODULAR GLARE SCREEN, TEMPORARY  |
| ⑤ TEMP PAVT MK LINE, 150 mm (WHITE)   | TEMPORARY PAVEMENT   |
| ⑥ PAVT MKG TAPE, TYPE III, 100 mm (DOUBLE YELLOW)   | VERTICAL PANELS @ 50' C-C WITH STEADY BURNING LIGHTS                             |

REVISIONS	
NAME	DATE

ILLINOIS DEPARTMENT OF TRANSPORTATION  
FAU 3578 (SOUTHWEST HIGHWAY) OVER B&O RAILROAD AND STONY CREEK  
SUGGESTED STAGING OF CONSTRUCTION & TRAFFIC CONTROL  
MOT TYPICAL SECTIONS  
RIDGELAND AVENUE  
SCALE: NONE  
DATE: 6/17/09  
DRAWN BY: CPK  
CHECKED BY: DES

tkoeppen(Rdwy\_Lisle) 6/26/2009 11:33:59 AM PDF(Grey\_Large).plt 0:\IDOT\9556-A0\Drawings\RDWY\shfts\MOT\S.mot\_02.typ.dgn  
**PATRICK ENGINEERING INC.**  
 LISLE, ILLINOIS