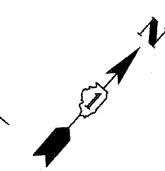
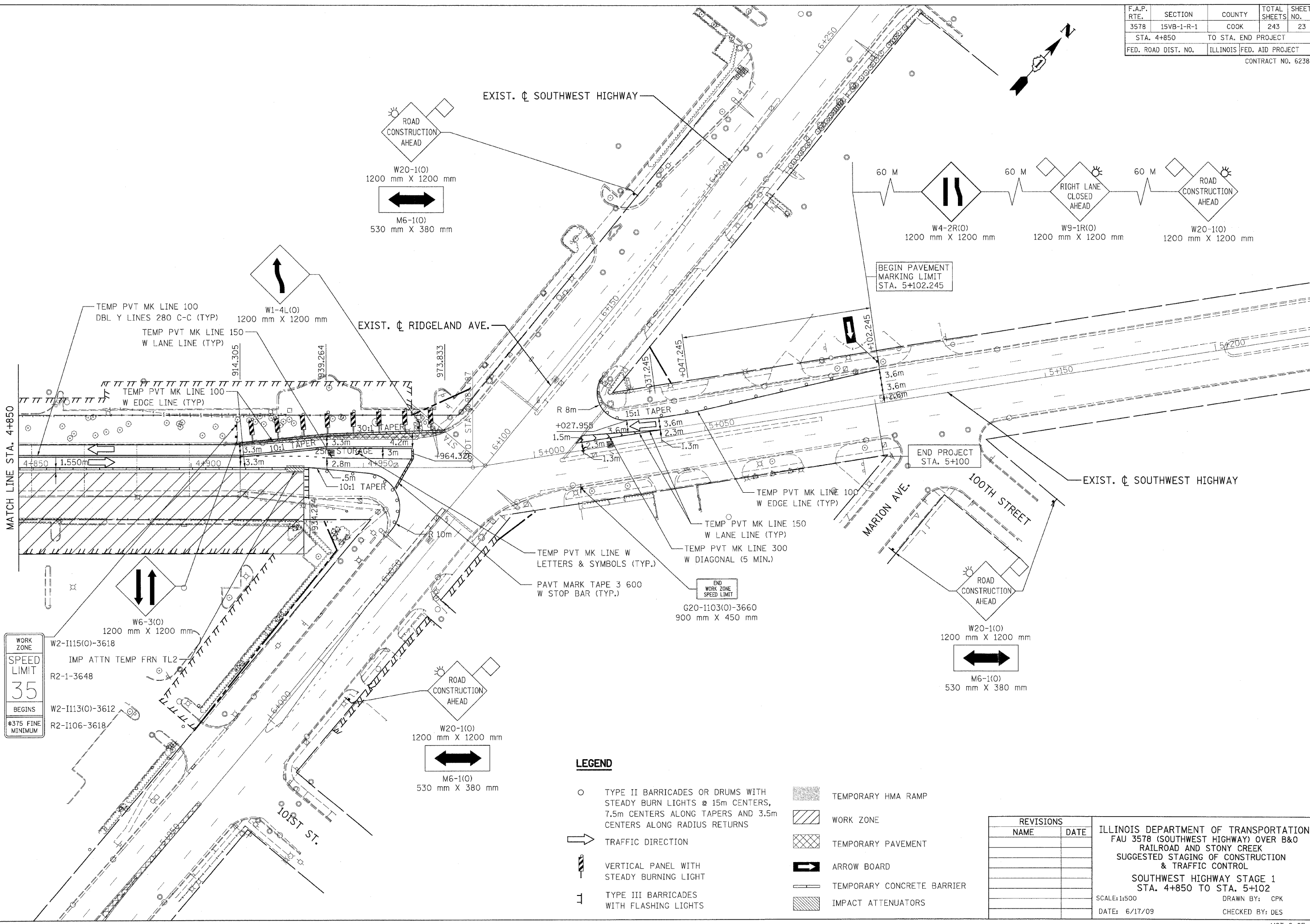


F.A.P. RTE.	SECTION	COUNTY	TOTAL SHEETS	SHEET NO.
3578	15VB-1-R-1	COOK	243	23
STA. 4+850		TO STA. END PROJECT		
FED. ROAD DIST. NO.		ILLINOIS FED. AID PROJECT		
CONTRACT NO. 62388				



hkoepfen(Rdwy_Lisile) 6/26/2009 11:34:09 AM PDF(Grey_Large).plt C:\IDOT\9556-AC\Drawings\RDWY\shfts\MOT\S_mot_01_02.dgn



WORK ZONE	W2-II15(O)-3618
SPEED LIMIT	IMP ATTN TEMP FRN TL2
35	R2-1-3648
BEGINS	W2-II13(O)-3612
#375 FINE MINIMUM	R2-II06-3618

LEGEND

- TYPE II BARRICADES OR DRUMS WITH STEADY BURN LIGHTS @ 15m CENTERS, 7.5m CENTERS ALONG TAPERS AND 3.5m CENTERS ALONG RADIUS RETURNS
- ➔ TRAFFIC DIRECTION
- ⏏ VERTICAL PANEL WITH STEADY BURNING LIGHT
- ⏏ TYPE III BARRICADES WITH FLASHING LIGHTS
- ▨ TEMPORARY HMA RAMP
- ▨ WORK ZONE
- ▨ TEMPORARY PAVEMENT
- ➔ ARROW BOARD
- ▨ TEMPORARY CONCRETE BARRIER
- ▨ IMPACT ATTENUATORS

REVISIONS	
NAME	DATE

ILLINOIS DEPARTMENT OF TRANSPORTATION
 FAU 3578 (SOUTHWEST HIGHWAY) OVER B&O RAILROAD AND STONY CREEK
 SUGGESTED STAGING OF CONSTRUCTION & TRAFFIC CONTROL
SOUTHWEST HIGHWAY STAGE 1
 STA. 4+850 TO STA. 5+102
 SCALE: 1:500
 DATE: 6/17/09
 DRAWN BY: CPK
 CHECKED BY: DES