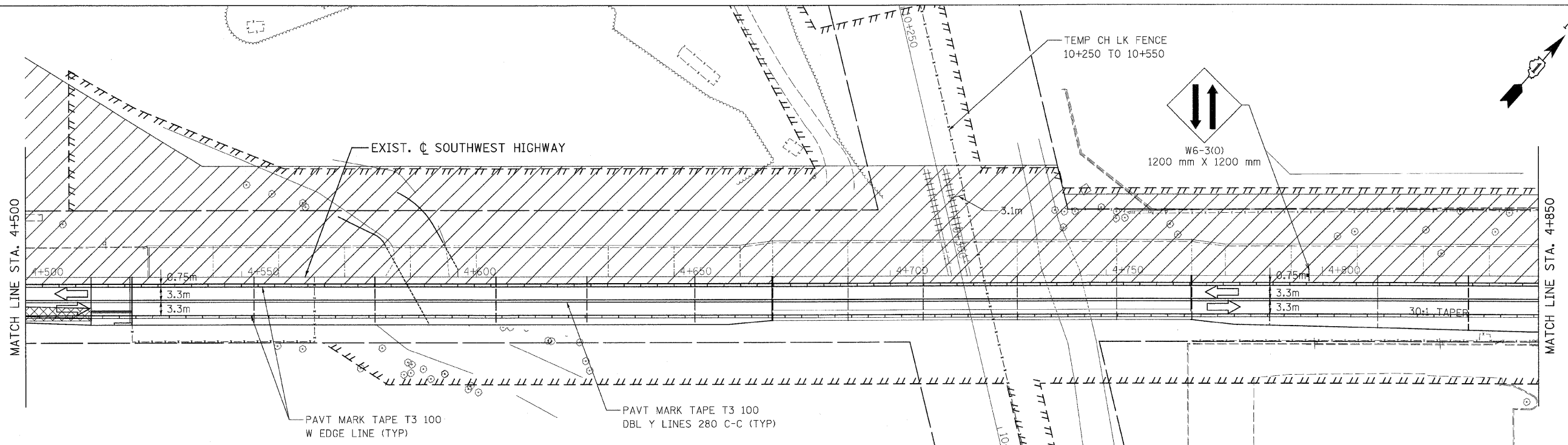
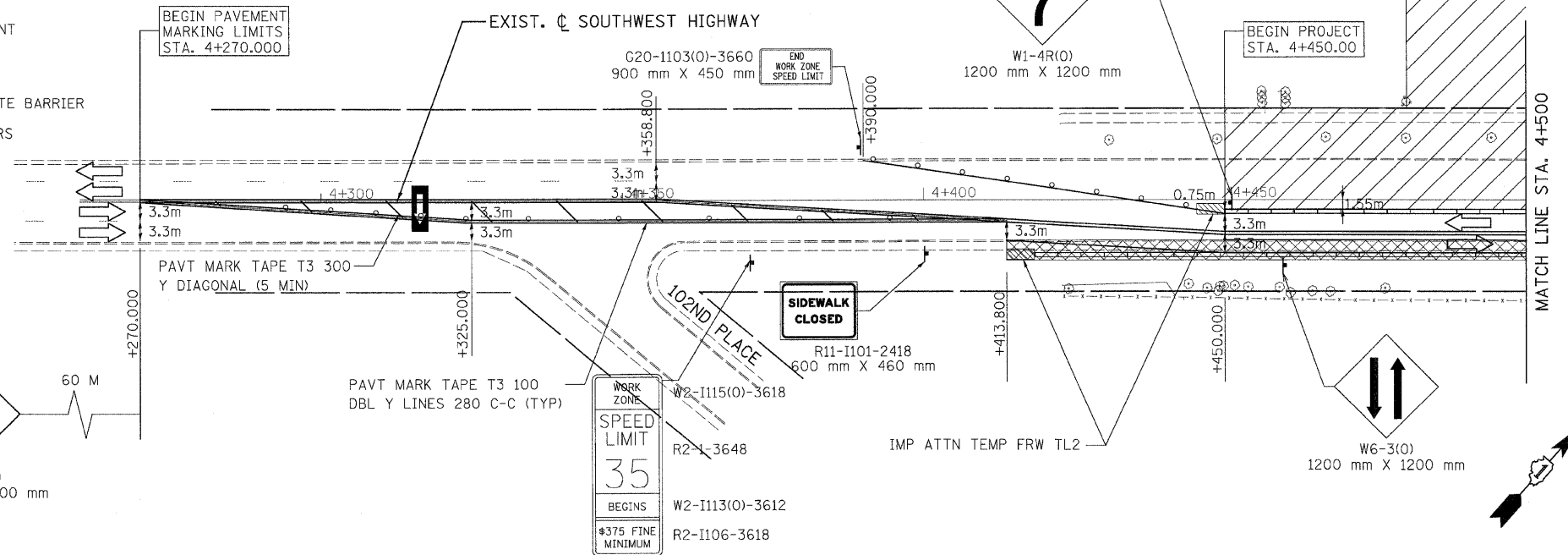
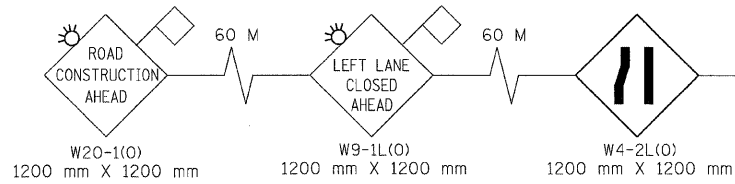


F.A.P. RTE.	SECTION	COUNTY	TOTAL SHEETS	SHEET NO.
3578	15VB-1-R-1	COOK	243	24
STA. BEGIN PROJECT TO STA. 4+850				
FED. ROAD DIST. NO.		ILLINOIS FED. AID PROJECT		
CONTRACT NO. 62388				

**LEGEND**

- TYPE II BARRICADES OR DRUMS WITH STEADY BURN LIGHTS @ 15m CENTERS, 7.5m CENTERS ALONG TAPERS AND 3.5m CENTERS ALONG RADIUS RETURNS
- ➔ TRAFFIC DIRECTION
- ▬ VERTICAL PANEL WITH STEADY BURNING LIGHT
- ⊥ TYPE III BARRICADES WITH FLASHING LIGHTS
- ▨ TEMPORARY HMA RAMP
- ▧ WORK ZONE
- ▩ TEMPORARY PAVEMENT
- ▭ ARROW BOARD
- ▬ TEMPORARY CONCRETE BARRIER
- ▨ IMPACT ATTENUATORS



REVISIONS	
NAME	DATE

ILLINOIS DEPARTMENT OF TRANSPORTATION  
 FAU 3578 (SOUTHWEST HIGHWAY) OVER B&O  
 RAILROAD AND STONY CREEK  
 SUGGESTED STAGING OF CONSTRUCTION  
 & TRAFFIC CONTROL  
 SOUTHWEST HIGHWAY STAGE 2  
 BEGIN STA. 4+270 TO STA. 4+850  
 SCALE: 1:500  
 DATE: 6/17/09  
 DRAWN BY: CPK  
 CHECKED BY: DES

tkoeppen(Rdwy\_Lisle) 6/26/2009 1:34:17 AM PDF(Grey\_Large).plt G:\DOT\9556\_A0\Drawings\RDWY\shfts\MOT\S\_mot\_02\_03.dgn

