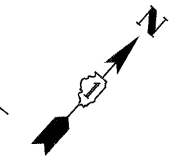
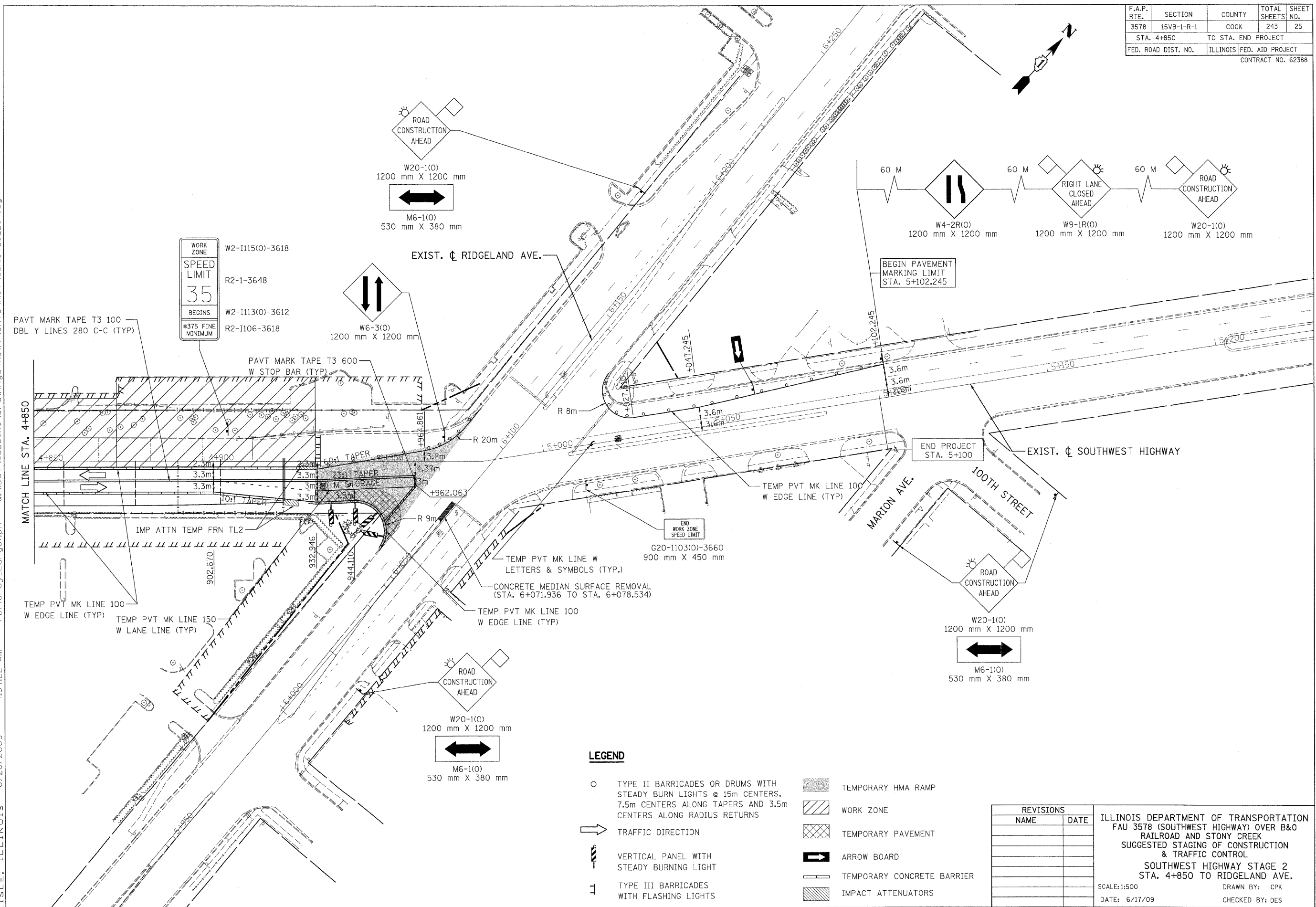


F.A.P. RTE.	SECTION	COUNTY	TOTAL SHEETS	SHEET NO.
3578	15VB-1-R-1	COOK	243	25
STA. 4+850		TO STA. END PROJECT		
FED. ROAD DIST. NO.		ILLINOIS FED. AID PROJECT		
CONTRACT NO. 62388				



h:\koeppen(Rdwy-Lisle) 6/26/2009 11:34:22 AM PDF(Grey_Large).pht Q:\DOT\9556-A0\Drawings\RDWY\shfts\MOT\S_mot_02_04.dgn



- LEGEND**
- TYPE II BARRICADES OR DRUMS WITH STEADY BURN LIGHTS @ 15m CENTERS, 7.5m CENTERS ALONG TAPERS AND 3.5m CENTERS ALONG RADIUS RETURNS
 - TRAFFIC DIRECTION
 - ⊥ VERTICAL PANEL WITH STEADY BURNING LIGHT
 - T TYPE III BARRICADES WITH FLASHING LIGHTS
 - ▨ TEMPORARY HMA RAMP
 - ▨ WORK ZONE
 - ▨ TEMPORARY PAVEMENT
 - ARROW BOARD
 - TEMPORARY CONCRETE BARRIER
 - ▨ IMPACT ATTENUATORS

REVISIONS	
NAME	DATE

ILLINOIS DEPARTMENT OF TRANSPORTATION
 FAU 3578 (SOUTHWEST HIGHWAY) OVER B&O
 RAILROAD AND STONY CREEK
 SUGGESTED STAGING OF CONSTRUCTION
 & TRAFFIC CONTROL
 SOUTHWEST HIGHWAY STAGE 2
 STA. 4+850 TO RIGDELAND AVE.
 SCALE: 1:500
 DATE: 6/17/09
 DRAWN BY: CPK
 CHECKED BY: DES

