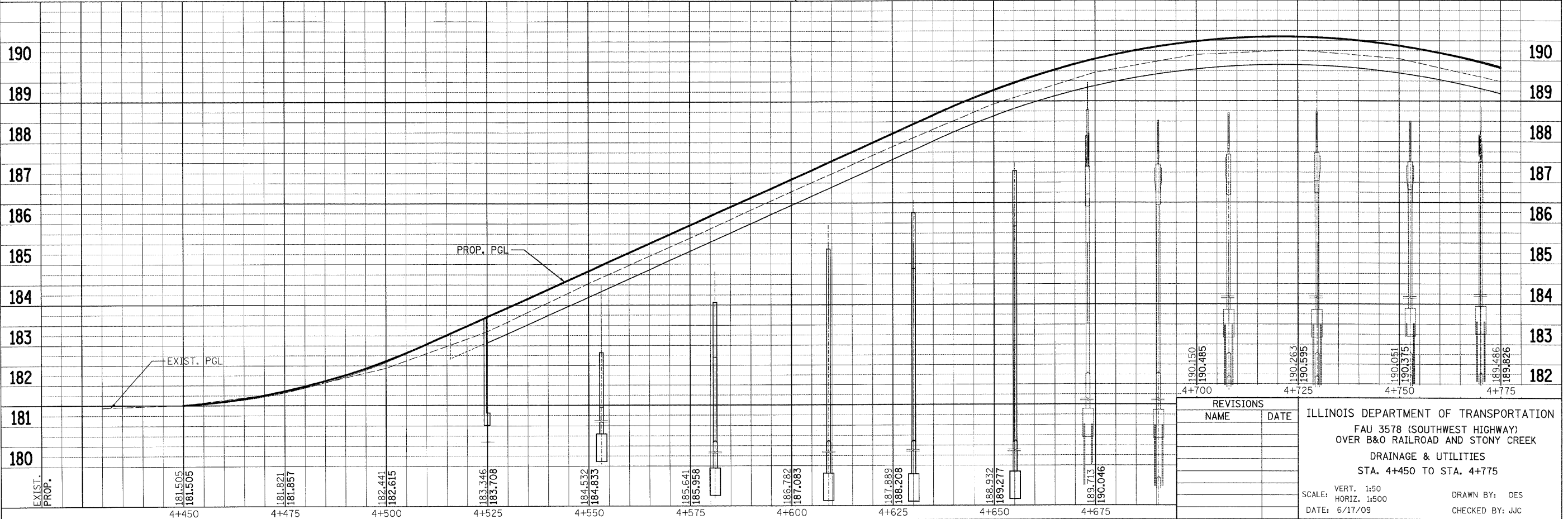
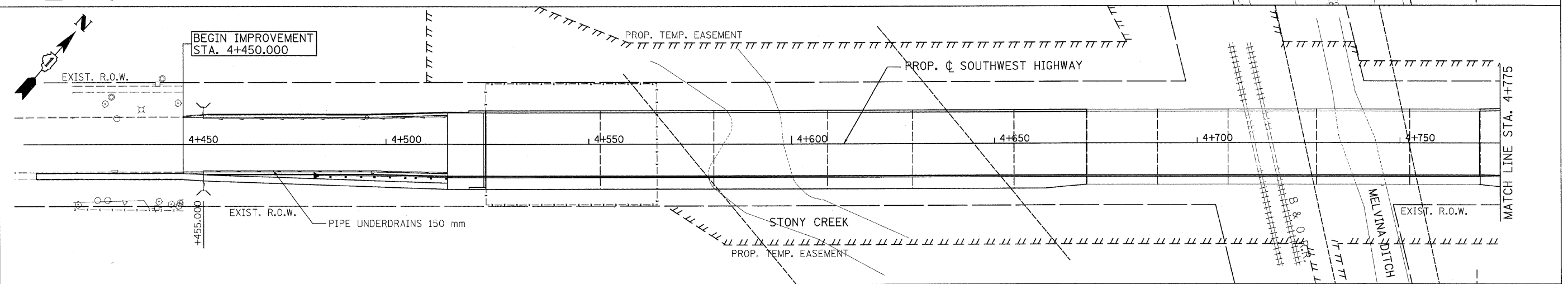
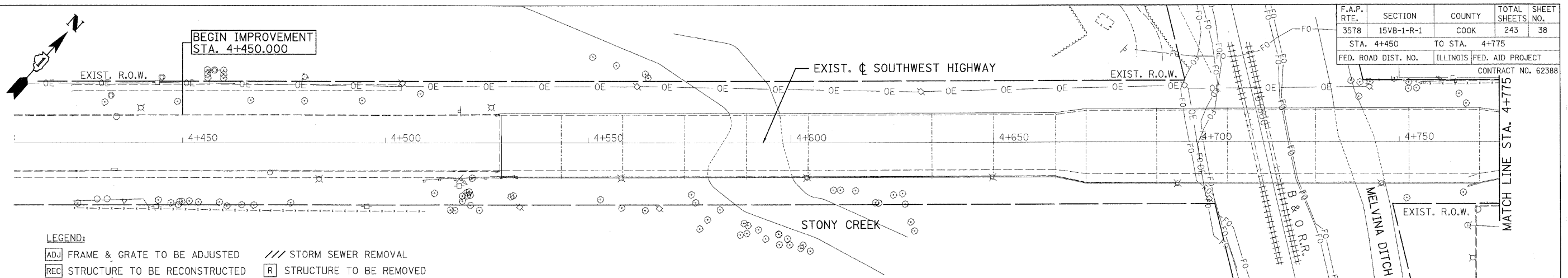


F.A.P. RTE.	SECTION	COUNTY	TOTAL SHEETS	SHEET NO.
3578	15VB-1-R-1	COOK	243	38
STA. 4+450	TO STA. 4+775			
FED. ROAD DIST. NO.		ILLINOIS FED. AID PROJECT	CONTRACT NO. 62388	



REVISIONS	
NAME	DATE

ILLINOIS DEPARTMENT OF TRANSPORTATION
 FAU 3578 (SOUTHWEST HIGHWAY)
 OVER B&O RAILROAD AND STONY CREEK
 DRAINAGE & UTILITIES
 STA. 4+450 TO STA. 4+775

SCALE: VERT. 1:50 DRAWN BY: DES
 HORIZ. 1:500 DATE: 6/17/09 CHECKED BY: JJC

tkoepen(Rdwy_Listie) 6/26/2009 1:36:13 AM PDF(Grey_Large).pit Q:\DOT\9556_A0\Drawings\RDWY\shfts\Draw\S.Dra.01.dgn

