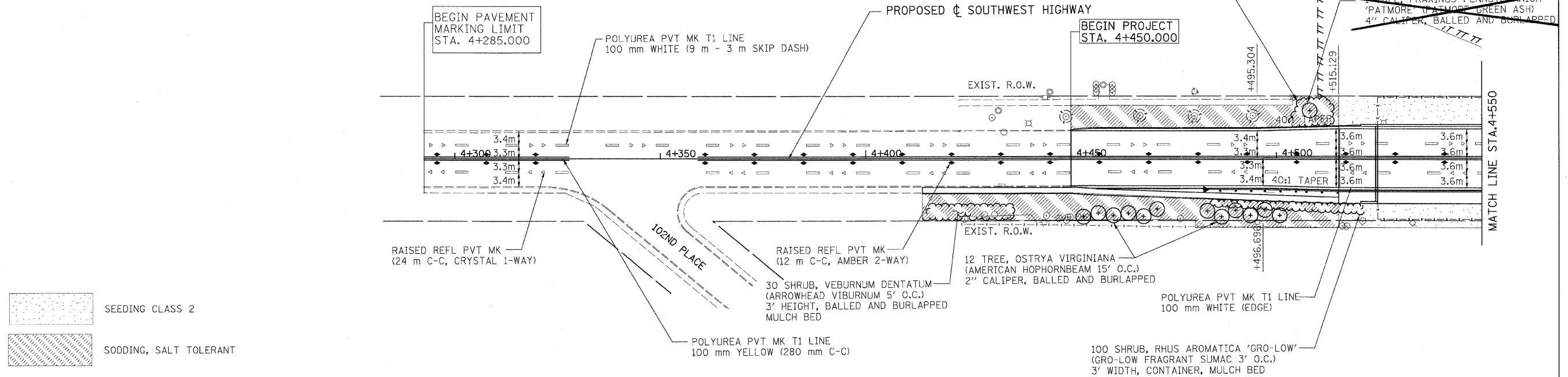
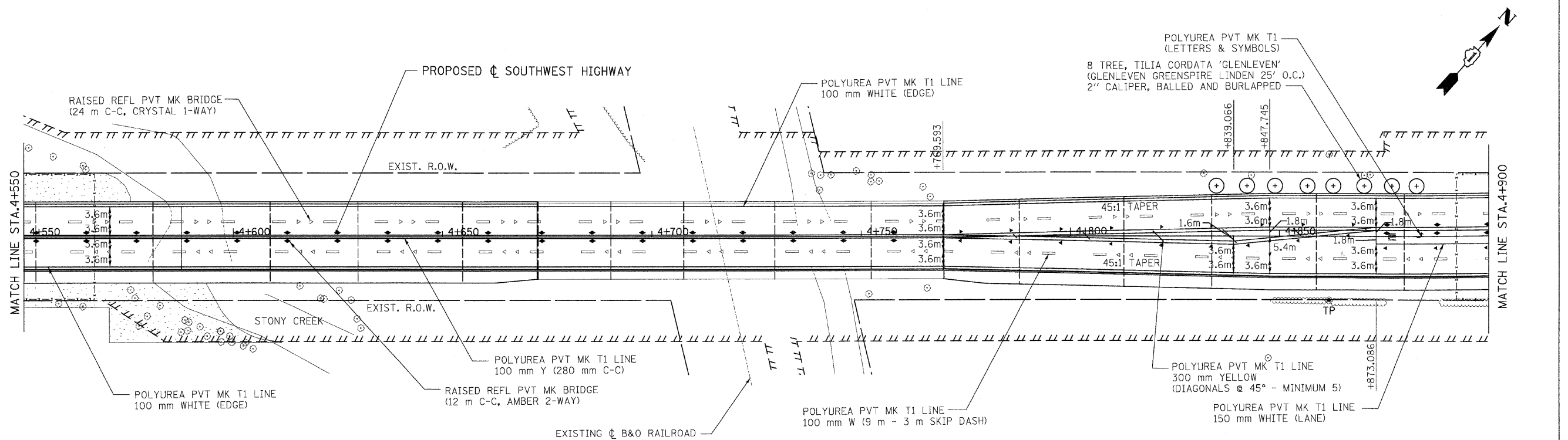


F.A.P. RTE.	SECTION	COUNTY	TOTAL SHEETS	SHEET NO.
3578	15VB-1-R-1	COOK	243	50
STA. 4+285		TO STA. 4+900		
FED. ROAD DIST. NO.		ILLINOIS FED. AID PROJECT		

CONTRACT NO. 62388



- SEEDING CLASS 2
- SODDING, SALT TOLERANT



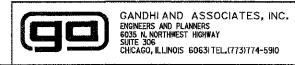
NOTES:

1. ALL PAVEMENT SHALL BE PROVIDED WITH POLYUREA PAVEMENT MARKINGS, TYPE 1.
2. THE CONTRACTOR SHALL CONTACT MS. PATRICE HARRIS AT 708-597-9800 TWO WEEKS PRIOR TO INSTALLING FINAL PAVEMENT MARKINGS.

REVISIONS	
NAME	DATE

ILLINOIS DEPARTMENT OF TRANSPORTATION  
 FAU 3578 (SOUTHWEST HIGHWAY)  
 OVER B&O RAILROAD AND STONY CREEK  
 PAVEMENT MARKING & LANDSCAPING PLAN  
 SHEET 1 OF 3

SCALE: 1:500  
 DATE: 6/17/09  
 DRAWN BY: BB/SA  
 CHECKED BY: PKG



PM1

Rev.

+koeppen(Rdwy\_Lis)le 6/26/2009 1:36:53 AM PDF(Grey\_Large).plt Q:\DOT\9556\_A0\Drawings\RDWY\shrs\Strp\S\_Strp\_Lndscp\_01.dgn

