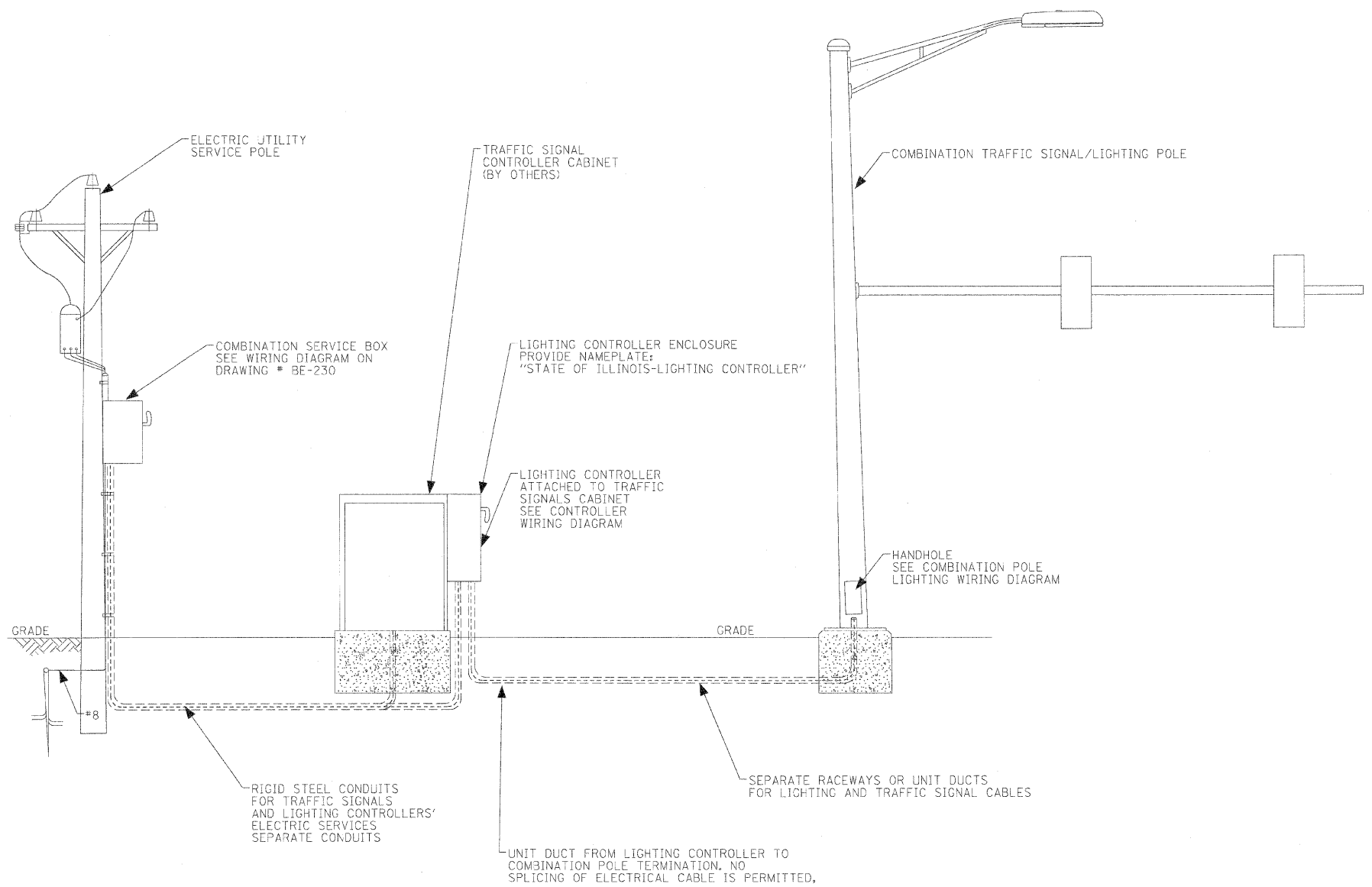
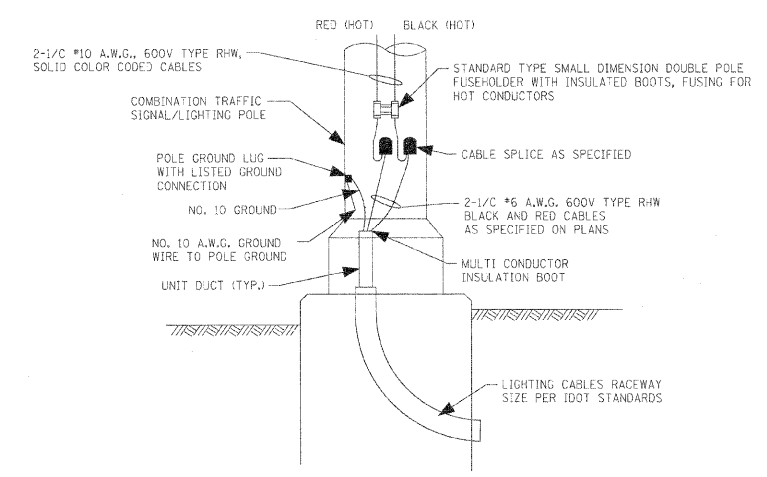


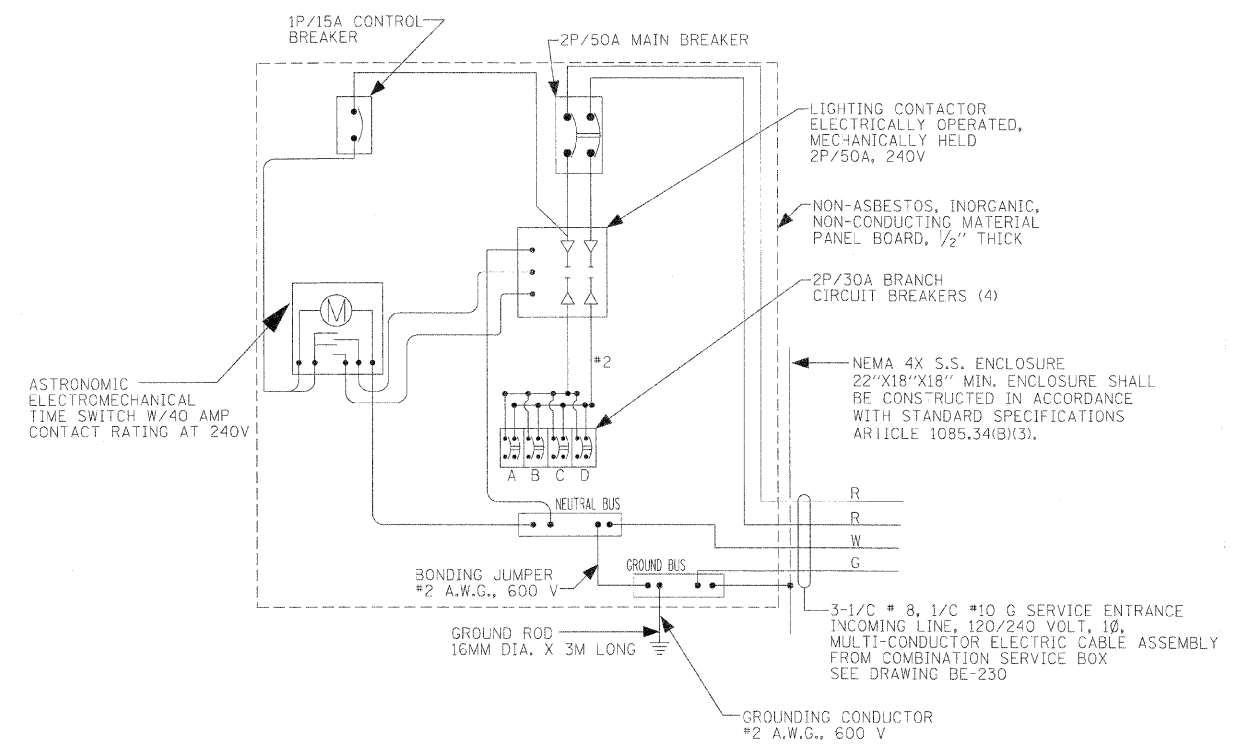
F.A.P. R.T.L.	SECTION	COUNTY	TOTAL SHEETS	SHEET NO.
3578	15VB-1-R-1	COOK	248	78
STA. _____		TO STA. _____		
FED. ROAD DIST. NO. _____		ILLINOIS FED. AID PROJECT		
CONTRACT NO. 62388				



**COMBINATION POLE LIGHTING CABLING - TYPICAL**  
N.T.S.  
(SEE TRAFFIC SIGNAL PLANS ROUTING REQUIREMENT AND FOR CONDUCTOR AND CONDUIT SIZES)



**COMBINATION POLE LIGHTING WIRING DIAGRAM**  
N.T.S.



**COMBINATION POLE LIGHTING CONTROLLER PANEL WIRING DIAGRAM**

**PATRICK**  
ENGINEERING INC.  
LISLE, ILLINOIS

**GO** GANDHI AND ASSOCIATES, INC.  
ENGINEERS AND PLANNERS  
6033 N. NORTHWEST HIGHWAY  
SUITE 306  
CHICAGO, ILLINOIS 60631 TEL: 773/774-5910

REVISIONS		ILLINOIS DEPARTMENT OF TRANSPORTATION FAU 3578 (SOUTHWEST HIGHWAY) OVER B&O RAILROAD AND STONY CREEK
NAME	DATE	
		MISCELLANEOUS DETAILS

SCALE: N.T.S.      DRAWN BY: RDP/KGP  
DATE: JUNE 17, 2009      CHECKED BY: PKG/MAE