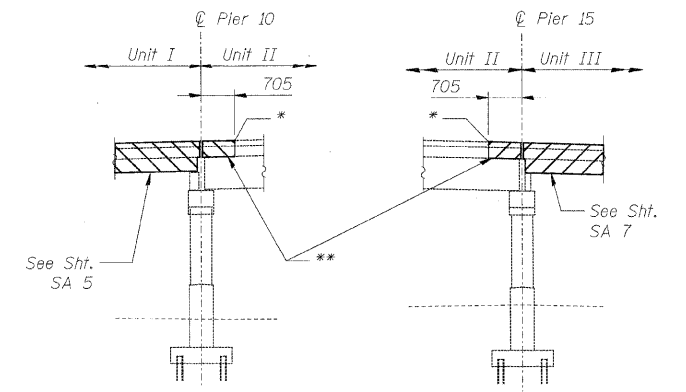


F.A.U. RTE.	SECTION	COUNTY	TOTAL SHEETS	SHEET NO.
3578	15V B-1-R-1	COOK	243	93
STA.		TO STA.		
FED. ROAD DIST. NO.		ILLINOIS		FED. AID PROJECT
CONTRACT NO. 62388				

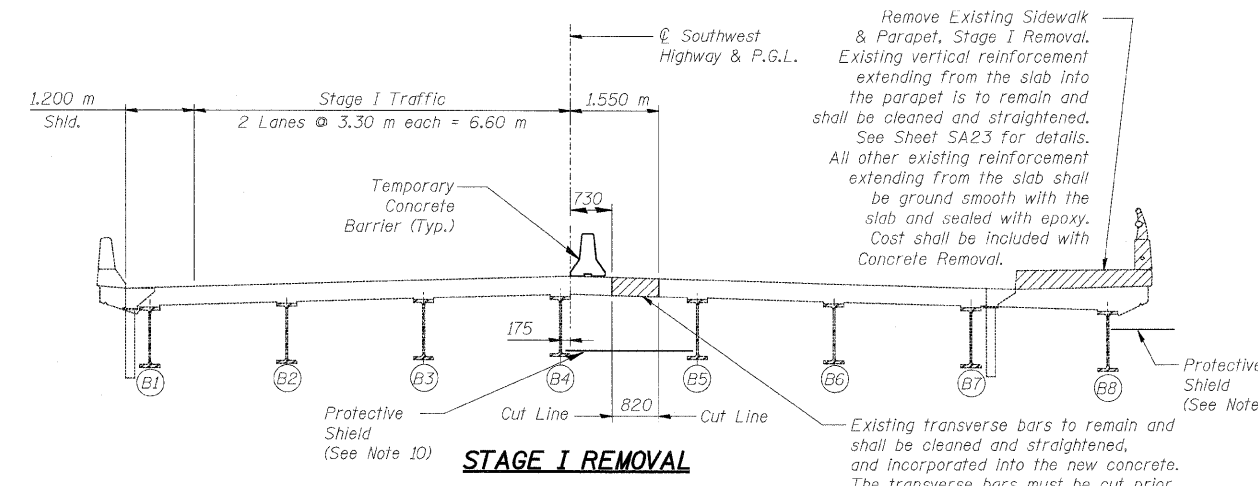
SHEET SA 6 of SA110

**SUPERSTRUCTURE CONSTRUCTION SEQUENCE**

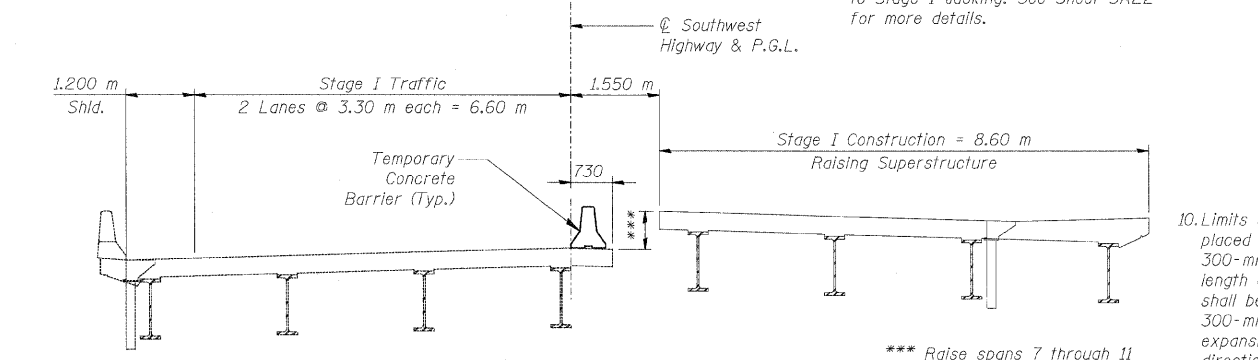
1. Stage I - Sidewalk, Parapet and Deck (between Cut Lines) Removal.
2. Remove existing Intermediate Diaphragms between Beams B4 & B5. Also cut End Diaphragms between Beams B4 & B5. See "Existing End Diaphragms between Beams B4 & B5" detail.
3. The Contractor shall record bottom of Beam and top of Bridge Seat elevations (Beams B5 - B8) at each Substructure element. This information shall be submitted to the Engineer for review prior to beginning the jacking operations.
4. Stage I - Jack Beams B5 - B8. (Jacks shall be capable of lifting 150% of the computed Dead Load Reaction. See Table on this sheet for the reactions.) Remove existing End Diaphragms (see Removal of Existing End Diaphragm detail) and install new End Diaphragms for Modular Joints. See Sheet SA 35A for details. Deck Construction with Modular Joints.
5. The Contractor shall record bottom of Beam and top of Bridge Seat elevations (Beams B1- B4) at each Substructure element. This information shall be submitted to the Engineer for review prior to beginning the jacking operations.
6. Stage II - Jack Beams B1 - B4. Measure the vertical clearance (7.0m min.)
7. Reinstall existing Intermediate Diaphragms between Beams B4 & B5 with new M20 H.S. Bolts reusing the existing holes. Remove the existing End Diaphragms (see Removal of Existing Diaphragm detail) and install the End Diaphragms for the Modular Joints. See Sheet SA 35A for details.
8. Stage II - Deck Construction (between Beams B4 & B5 and Modular Joints).
9. Stage III - Sidewalk and Parapet Construction.



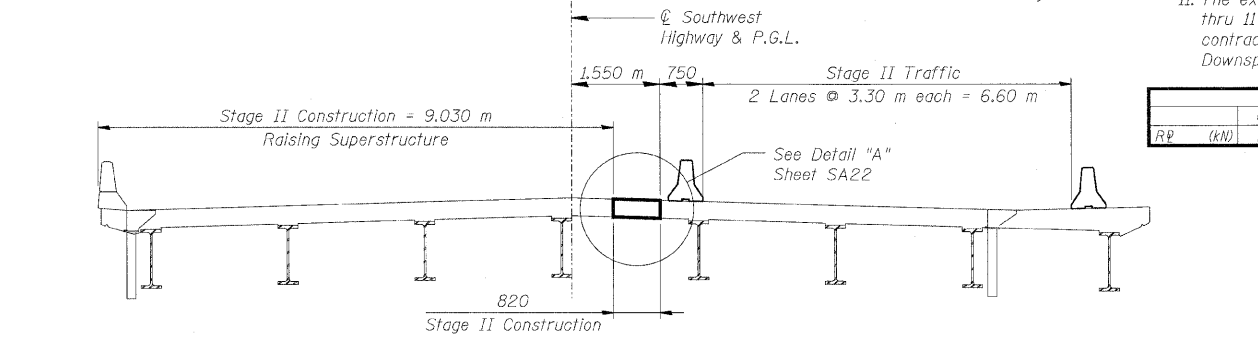
\* Saw Cut through Overlay into Slab 3/4" (19 mm).  
 \*\* Existing longitudinal bars to remain and shall be cleaned and straightened, and incorporated into the new concrete.  
**REMOVAL FOR JOINT RECONSTRUCTION**



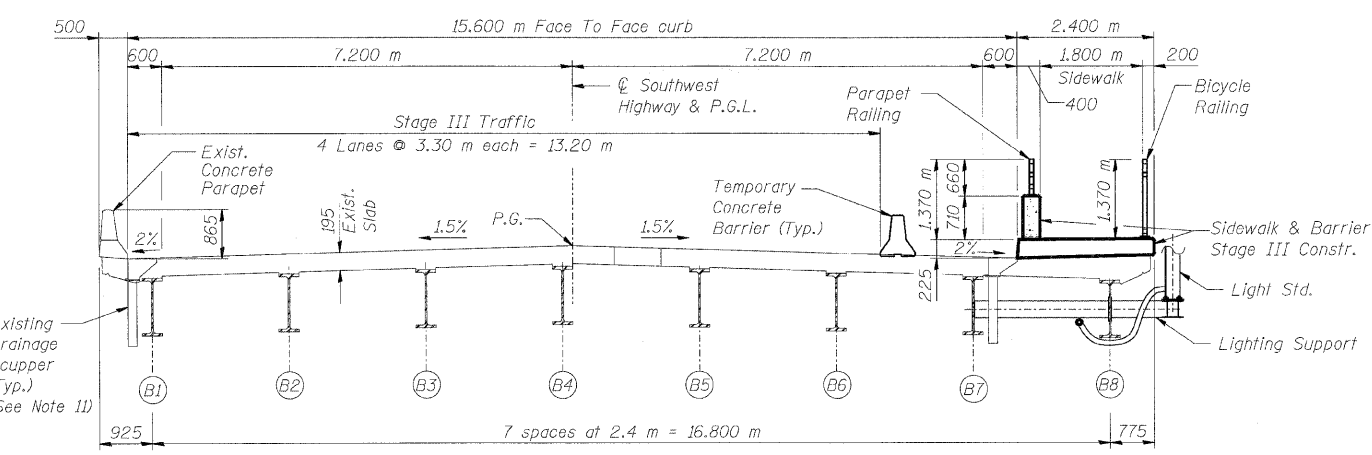
**STAGE I REMOVAL**



**STAGE I CONSTRUCTION**



**STAGE II CONSTRUCTION**

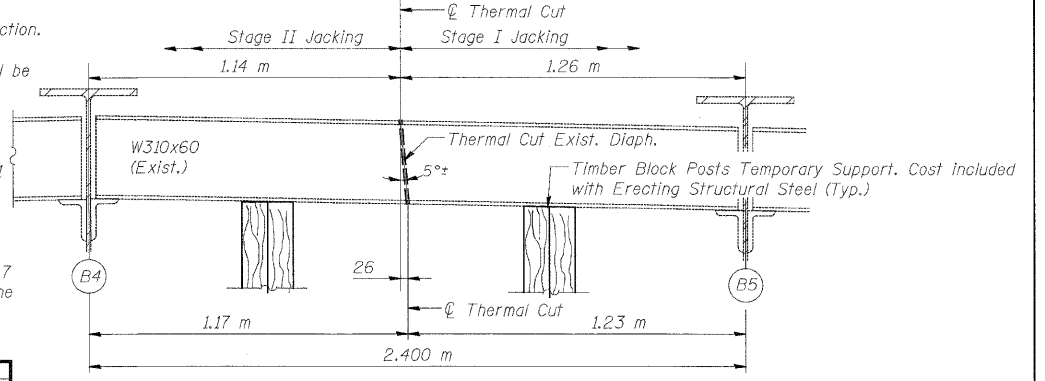


**STAGE III CONSTRUCTION**

10. Limits of Unit II Protective Shield: Protective Shield shall be placed between Beams 4 & 5 and between Beam 8 & 300-mm beyond the edge of deck fascia for the full length of spans 7 thru 11. In addition, Protective Shield shall be placed full width extending a minimum of 300-mm beyond the edge of deck under the pier 6 and 11 expansion joints and extending 900-mm in the longitudinal direction.

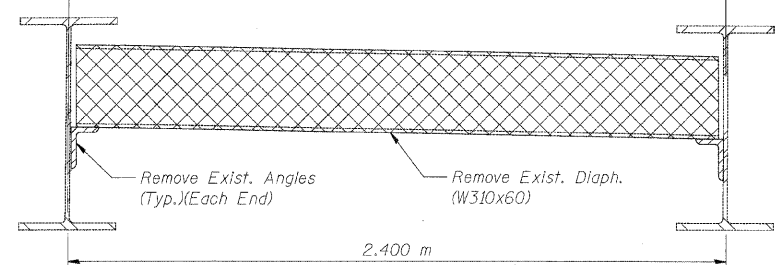
11. The existing drainage scuppers and downspouts in spans 7 thru 11 shall be cleaned. The cost shall be paid for at the contract price for Cleaning Bridge Scuppers and Downspouts.

	Pier 10	Pier 11	Pier 12	Pier 13	Pier 14	Pier 15
RP (kN)	232.7	232.7	232.7	232.7	232.7	232.7



**EXISTING END DIAPHRAGMS BETWEEN BEAMS B4 & B5**

Note: Thermal cutting of existing end diaphragms shall be performed in accordance with section 505 of the Standard Specifications. The cost of thermal cutting shall be included with Erecting Structural Steel.



**REMOVAL OF EXISTING END DIAPHRAGMS**

**LEGEND:**

	Structure Removal
	Concrete Removal
	Existing Structure
	Proposed Structure

**NOTES:**

1. All dimensions are in millimeters (mm) except as noted.
2. All Pedestrian Traffic shall be prohibited during all stages of construction.
3. Removal of existing end diaphragms and painting of existing structural steel shall be performed in accordance with section 505 and 506 of the Standard Specifications respectively. The cost of diaphragm removal and painting shall be included with Erecting Structural Steel.

**BILL OF MATERIAL**

ITEM	UNIT	TOTAL
Concrete Removal	Cu. m	85.8
Jacking Existing Superstructure	L.Sum	1
Protective Shield	Sq. m	371.4

\*\*\*\* See Special Provision

REVISIONS	NAME	DATE

**ILLINOIS DEPARTMENT OF TRANSPORTATION**  
**CONSTRUCTION STAGING & REMOVAL DETAILS - UNIT II**  
**SOUTHWEST HIGHWAY OVER**  
**B&O RAILROAD AND STONY CREEK**  
 FAU 3578 SECTION 15V B-1-R-1  
 STRUCTURE NUMBER 016-2771  
 COOK COUNTY STATION 4+716.497  
 SCALE: NONE DRAWN BY: E. Mroozek  
 DATE: 6/17/09 CHECKED BY: G. Hatlestad

H:\cadd\p1\rdwy\_1\title 6/26/2009 13:38:20 AM Q:\IDOT\9556\_A0\Drawings\STRUCT\06 st constr Unit II.dgn

