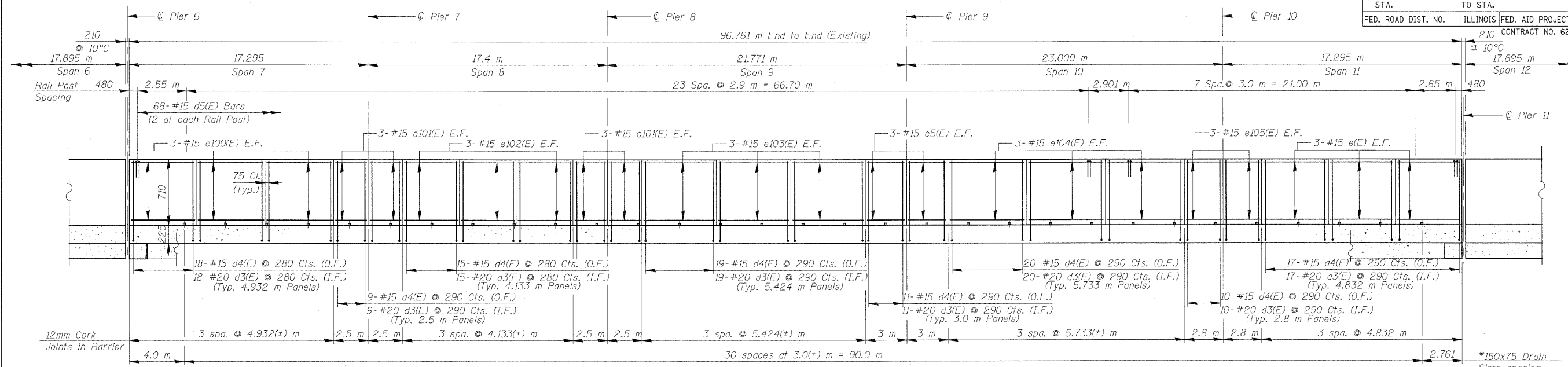
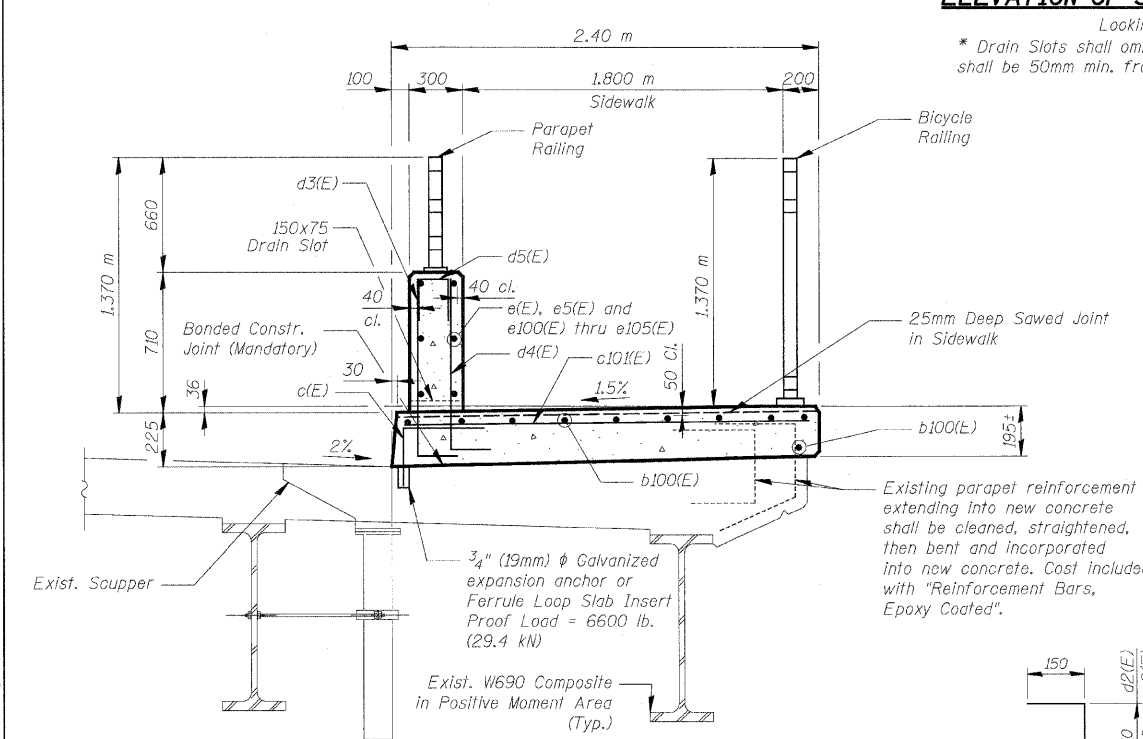


F.A.U. RTE.	SECTION	COUNTY	TOTAL SHEETS NO.	SHEET NO.
3578	15V B-1-R-1	COOK	243	112
STA.		TO STA.		
FED. ROAD DIST. NO.		ILLINOIS FED. AID PROJECT		
		CONTRACT NO. 62388		



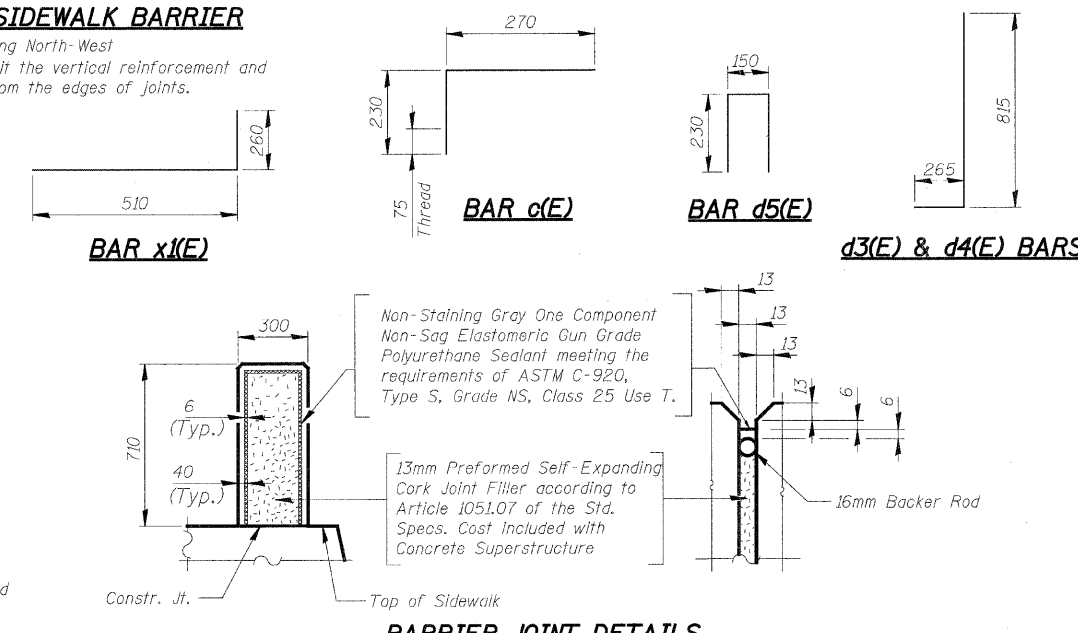
ELEVATION OF SIDEWALK BARRIER

Looking North-West
 * Drain Slots shall omit the vertical reinforcement and shall be 50mm min. from the edges of joints.



SECTION THRU SIDEWALK

Lighting Support omitted for clarity



BARRIER JOINT DETAILS

NOTES

- Reinforcement bars designated (E) shall be Epoxy Coated.
- Bars indicated thus 20 x 3 - #15 etc. indicates 20 lines of bars with 3 lengths per line.
- All dimensions are in millimeters (mm) except as noted.
- The cost of expansion anchors/inserts is included in the cost of Reinforcement Bars, Epoxy Coated.
- In lieu of providing the d3(E) & d4(E) dowels bars as shown, the contractor, at his option and expense, can submit to the engineer for his review and approval an alternate detail to drill and grout the bars. No additional compensation will be allowed if the contractor elects to use the alternate detail.

SUPERSTRUCTURE - UNIT II

BILL OF MATERIAL

BAR	NO.	SIZE	LENGTH (m)	SHAPE
a4(E)	4	# 20	1.200	—
a100(E)	1094	# 15	0.770	—
a101(E)	12	# 15	8.520	—
a102(E)	24	# 15	5.180	—
b100(E)	165	# 15	9.270	—
b101(E)	48	# 15	8.540	—
b102(E)	8	# 20	8.800	—
b103(E)	4	# 20	11.000	—
b104(E)	4	# 20	10.000	—
c(E)	324	# 15	0.500	—
c2(E)	6	# 15	1.170	—
c101(E)	324	# 15	2.300	—
d(E)	12	# 15	0.910	—
d1(E)	6	# 15	0.800	—
d2(E)	6	# 15	1.140	—
d3(E)	345	# 20	1.080	—
d4(E)	345	# 15	1.080	—
d5(E)	68	# 15	0.610	—
e(E)	18	# 15	4.710	—
e5(E)	12	# 15	2.850	—
e100(E)	18	# 15	4.810	—
e101(E)	24	# 15	2.350	—
e102(E)	18	# 15	3.980	—
e103(E)	18	# 15	5.270	—
e104(E)	18	# 15	5.580	—
e105(E)	12	# 15	2.650	—
x1(E)	114	# 15	0.770	—
Concrete Superstructure				m ³ 92.5
Bridge Deck Grooving				m ² 97
Protective Coat				m ² 461
Reinforcement Bars, Epoxy Coated				kg 9,110
Bar Splicers				Each 12
Mechanical Splicers				Each 1,094

REVISIONS	NAME	DATE

ILLINOIS DEPARTMENT OF TRANSPORTATION
SUPERSTRUCTURE DETAILS - UNIT II
SOUTHWEST HIGHWAY OVER
B&O RAILROAD AND STONY CREEK
 FAU 3578 SECTION 15V B-1-R-1
 STRUCTURE NUMBER 016-2771
 COOK COUNTY STATION 4+716.497

SCALE: NONE DRAWN BY: M. Tryon
 DATE: 6/17/09 CHECKED BY: A. Yargiooglu

H:\cooper\rdwy\lfile\6/26/2009 14:20:02 AM
 Q:\VDDT\9556-AO\Drawings\STRUCT\23_Deck_Details\UNIT II.dgn

