

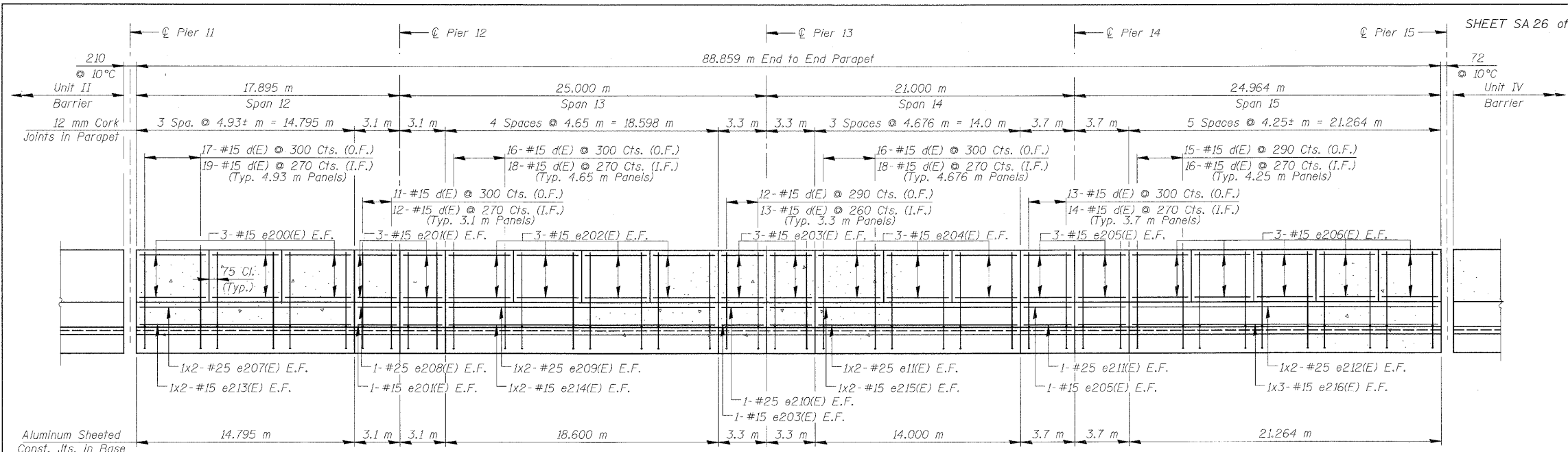
F.A.U. RTE.	SECTION	COUNTY	TOTAL SHEETS	SHEET NO.
3578	15V B-1-R-1	COOK	243	116
STA.		TO STA.		
FED. ROAD DIST. NO.		ILLINOIS	FED. AID PROJECT	CONTRACT NO. 62388

SUPERSTRUCTURE - UNIT III
BILL OF MATERIAL

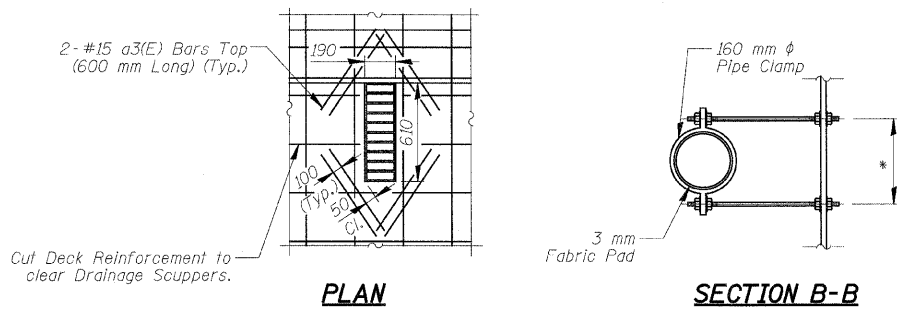
BAR	NO.	SIZE	LENGTH (m)	SHAPE
a3(E)	80	#15	0.60	—
a4(E)	297	#20	1.2	—
a200(E)	1,022	#15	6.36	—
a201(E)	288	#15	5.16	—
a202(E)	240	#15	4.72	—
a203(E)	286	#15	4.36	—
a204(E)	208	#15	3.92	—
a205(E)	1,020	#15	6.51	—
a206(E)	528	#15	5.31	—
a207(E)	494	#15	4.50	—
b200(E)	1,475	#15	9.34	—
b201(E)	65	#20	12.39	—
b202(E)	68	#20	12.76	—
b203(E)	70	#20	14.30	—
b204(E)	144	#15	4.93	—
c(E)	297	#15	0.50	—
c1(E)	297	#15	3.20	—
c2(E)	297	#15	1.17	—
d(E)	651	#15	0.91	—
d1(E)	324	#15	0.80	—
d2(E)	297	#15	1.14	—
d3(E)	310	#20	1.08	—
d4(E)	310	#15	1.08	—
d5(E)	64	#15	0.61	—
e1(E)	4	#25	7.46	—
e200(E)	36	#15	4.80	—
e201(E)	28	#15	2.95	—
e202(E)	48	#15	4.50	—
e203(E)	28	#15	3.15	—
e204(E)	36	#15	4.52	—
e205(E)	28	#15	3.55	—
e206(E)	60	#15	4.10	—
e207(E)	4	#25	7.88	—
e208(E)	4	#25	2.95	—
e209(E)	4	#25	9.76	—
e210(E)	4	#25	3.15	—
e211(E)	4	#25	3.55	—
e212(E)	4	#25	11.09	—
e213(E)	4	#15	7.61	—
e214(E)	4	#15	9.48	—
e215(E)	4	#15	7.18	—
e216(E)	6	#15	7.38	—
x(E)	75	#15	1.28	—
x1(E)	62	#15	0.77	—

Concrete Superstructure	m ³	503.8
Bridge Deck Grooving	m ²	1,471
Protective Coat	m ²	2,065
Reinforcement Bars	kg	74,170
Epoxy Coated Bar Splicers	Each	1,018

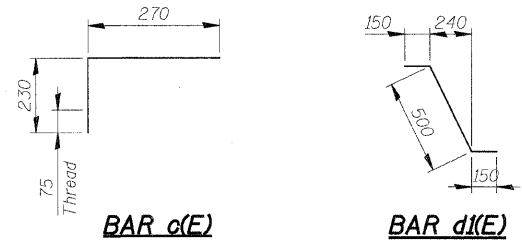
- NOTES**
- Reinforcement bars designated (E) shall be Epoxy Coated.
 - Bars indicated thus 20 x 3 - #15 etc. indicates 20 lines of bars with 3 lengths per line.
 - All dimensions are in millimeters (mm) except as noted.
 - The cost of expansion anchors/inserts is included in the cost of Reinforcement Bars, Epoxy Coated.



INSIDE ELEVATION OF PARAPET
(Looking Northwest)



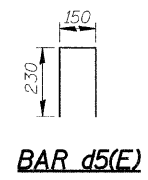
DRAINAGE SCUPPER DETAILS
*Dimension as required by Pipe Clamp



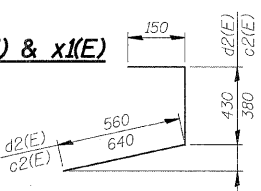
BAR c(E) **BAR d1(E)**

Bar	A	B
d(E)	150	760
d3(E)	265	815
d4(E)	265	815
x(E)	180	1,110
x1(E)	260	510

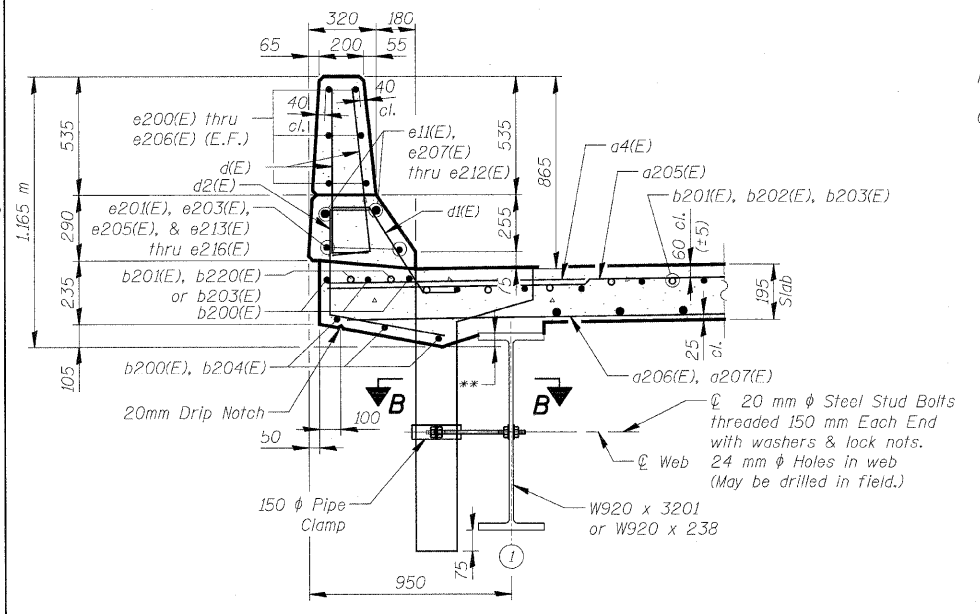
BARS d(E), d3(E), d4(E), x(E) & x1(E)



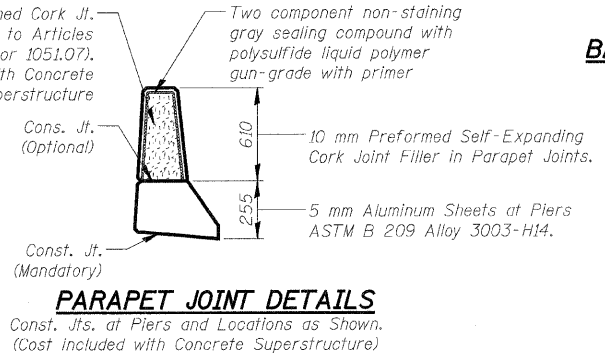
BAR d5(E)



BAR c2(E) & d2(E)



SECTION THRU PARAPET
**Varies 8 to 75



PARAPET JOINT DETAILS
Const. Jts. at Piers and Locations as Shown.
(Cost included with Concrete Superstructure)

REVISIONS	NAME	DATE

ILLINOIS DEPARTMENT OF TRANSPORTATION
SUPERSTRUCTURE DETAILS - UNIT III-B

SOUTHWEST HIGHWAY OVER
B&O RAILROAD AND STONY CREEK
FAU 3578 SECTION 15V B-1-R-1
STRUCTURE NUMBER 016-2771
COOK COUNTY STATION 4+716.497

SCALE: NONE DRAWN BY: M. Tryon
DATE: 6/17/09 CHECKED BY: A. Yargiooglu

Q:\DDOT\9556.A0\Drawings\STRUCT\26.Deck_Details\UNIT III-B.cgn
 6/26/2009 10:42:44 AM
 H:\cadd\p\Drawy-L\1010

