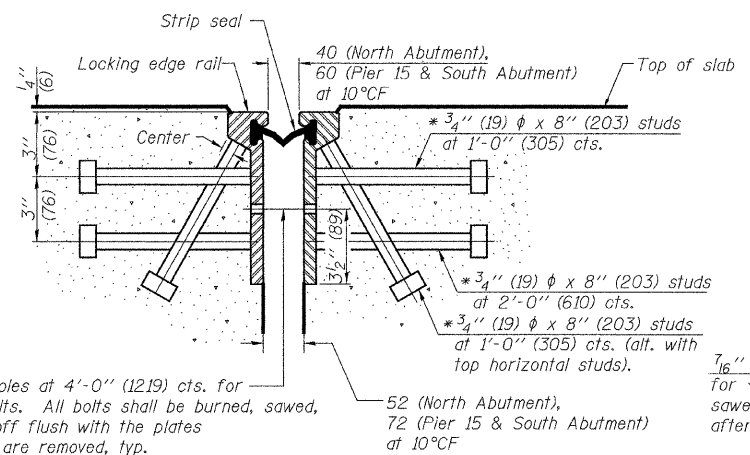
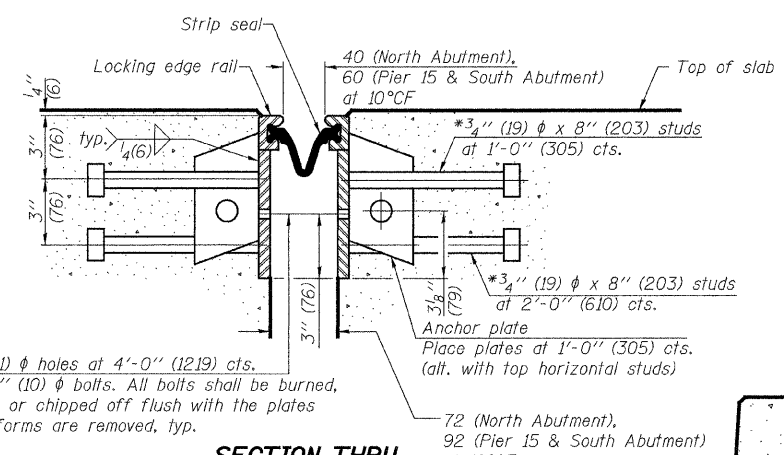


F.A.U. RTE.	SECTION	COUNTY	TOTAL SHEETS	SHEET NO.
3578	15V B-1-R-1	COOK	243	123
STA.		TO STA.		
FED. ROAD DIST. NO.	ILLINOIS	FED. AID PROJECT		CONTRACT NO. 62388

* Granular or solid flux filled headed studs conforming to Article 1006.32 of the Std. Specs., automatically end welded.



SECTION THRU ROLLED RAIL JOINT



SECTION THRU WELDED RAIL JOINT

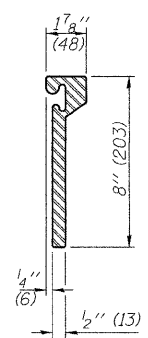
Notes:
 The strip seal shall be made continuous and shall have a minimum thickness of 1/4" (6). The configuration of the strip seal shall match the configuration of the Locking Edge Rails. Open or "webbed" strip seal gland configurations are not permitted. The gland shall be sized for a maximum rated movement of 4 inches (102).
 The height and thickness of the Locking Edge Rails shown are minimum dimensions. The actual configuration of the Locking Edge Rails and matching strip seal may vary from manufacturer to manufacturer. Flanged edge rails will not be allowed. Locking Edge Rails may be spliced at slope discontinuities and stage construction joints.
 The manufacturer's recommended installation methods shall be followed.
 The joint opening and deck dimensions detailed on the superstructure are based on a rolled rail expansion joint. If the Contractor elects to use the welded rail expansion joint, the opening and deck dimensions shall be modified according to the dimensions detailed on this sheet. Required modifications shall be made at no additional cost to the State.
 All steel components shall be galvanized after fabrication according to Article 520.03 of the Standard Specifications.

7/16" (11) φ holes at 4'-0" (1219) cts. for 3/8" (10) φ bolts. All bolts shall be burned, sawed, or chipped off flush with the plates after forms are removed, typ.

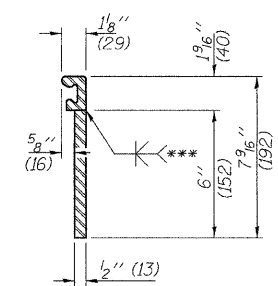
52 (North Abutment), 72 (Pier 15 & South Abutment) at 10°C/F

7/16" (11) φ holes at 4'-0" (1219) cts. for 3/8" (10) φ bolts. All bolts shall be burned, sawed, or chipped off flush with the plates after forms are removed, typ.

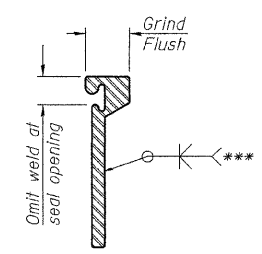
72 (North Abutment), 92 (Pier 15 & South Abutment) at 10°C/F



ROLLED EXTRUDED RAIL

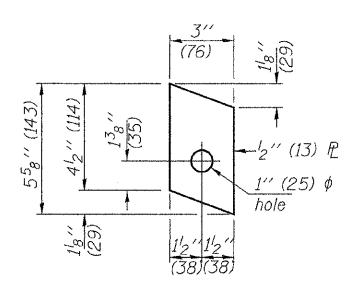


WELDED RAIL

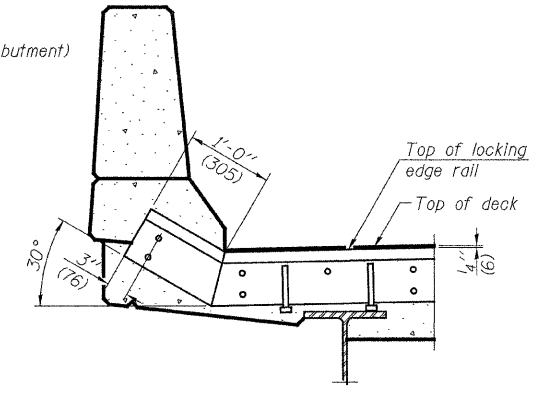


LOCKING EDGE RAIL SPLICE

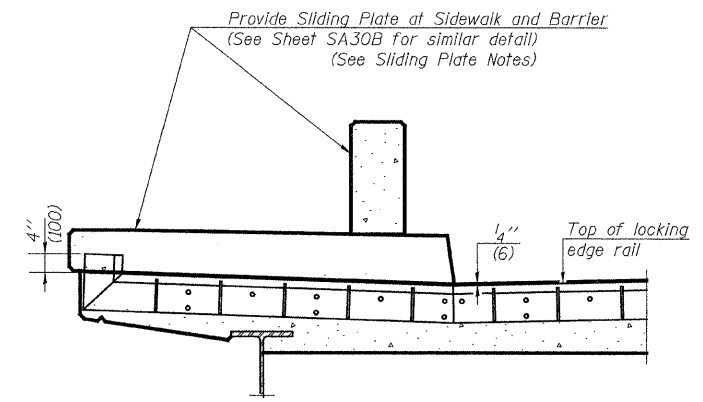
The inside of the locking edge rail groove shall be free of weld residue.



ANCHOR PLATE
(for welded rail)



AT PARAPET



AT SIDEWALK OR MEDIAN

Shorter plates with a single row of studs at 12" (305) cts. may be necessary on medians which are shallower than 9" (229). See manufacturer's recommendation.

ROLLED EXTRUDED RAIL

WELDED RAIL

LOCKING EDGE RAIL SPLICE

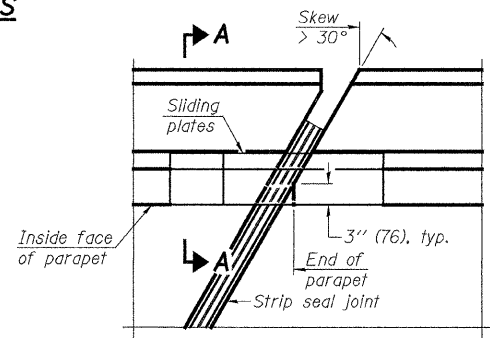
ANCHOR PLATE
(for welded rail)

AT PARAPET

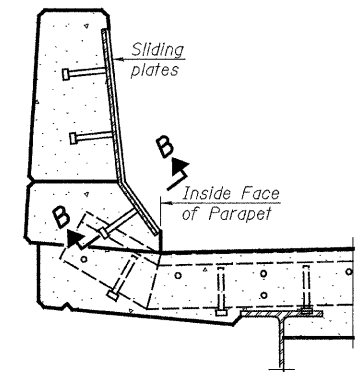
AT SIDEWALK OR MEDIAN

TYPICAL END TREATMENTS

LOCKING EDGE RAILS

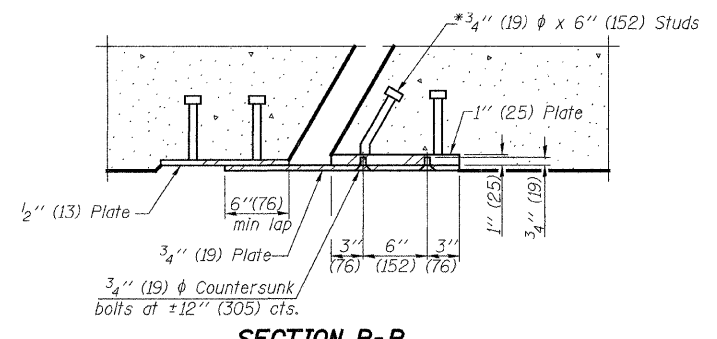


PLAN



SECTION A-A

POINT BLOCK DETAILS
(for skews > 30°)



SECTION B-B

BILL OF MATERIAL

Item	Unit	Total
Preformed Joint Strip Seal	m	64.3

PREFORMED JOINT STRIP SEAL

Sliding Plate Notes:
 1. The Sliding Plate Assemblies shall be galvanized after fabrication according to Article 520.03 of the Standard Specifications.
 2. Sliding Plate Assemblies shall be provided for the sidewalk & barrier and the parapet at each Preformed Joint Strip Seal location. Cost of furnishing and installing Sliding Plate Assemblies shall be included in the cost for Preformed Joint Strip Seal. Contractor shall submit for approval detailed shop drawings showing the plate dimensions prior to fabrication.

REVISIONS	
NAME	DATE

ILLINOIS DEPARTMENT OF TRANSPORTATION
 EXPANSION JOINT DETAILS
 SOUTHWEST HIGHWAY OVER
 B&O RAILROAD AND STONY CREEK
 FAU 3578 SECTION 15V B-1-R-1
 STRUCTURE NUMBER 016-2771
 COOK COUNTY STATION 4+716.497
 SCALE: NONE DRAWN BY: R. DiGiulio
 DATE: 6/17/09 CHECKED BY: A. Durbak

C:\DOT\9556.A0\Drawings\STRUCT\30C.exp Joint.dgn
 9/24/2009 2:39:39 PM
 ayaragocglur@rdwy.lisle

EJ-SSJ 10-1-08

PATRICK ENGINEERING INC.
 LISLE, ILLINOIS