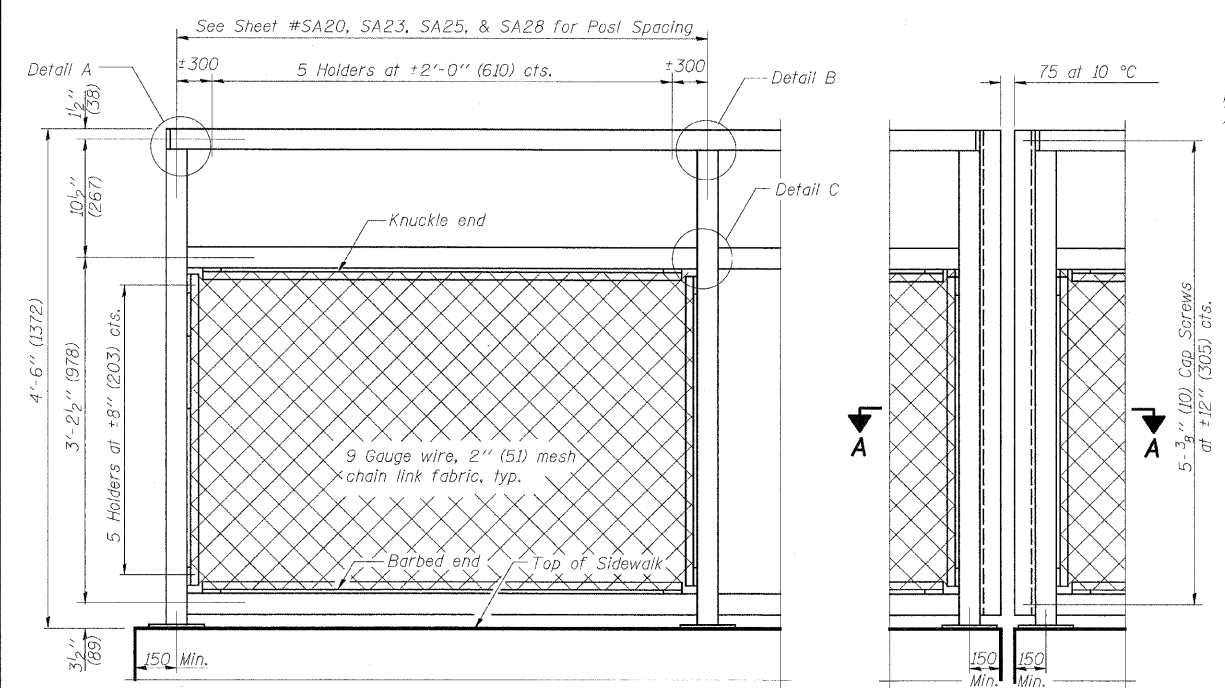


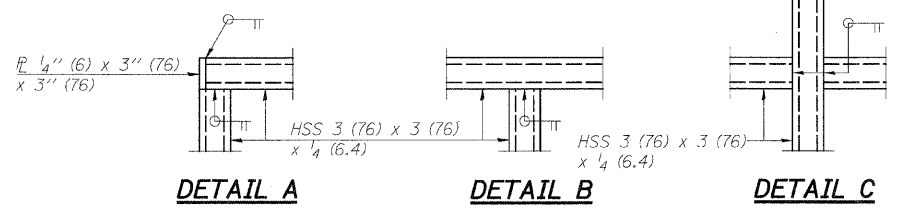
|                     |             |                           |              |           |
|---------------------|-------------|---------------------------|--------------|-----------|
| F.A.U. RTE.         | SECTION     | COUNTY                    | TOTAL SHEETS | SHEET NO. |
| 3578                | 15V B-1-R-1 | COOK                      | 243          | 125       |
| STA.                |             | TO STA.                   |              |           |
| FED. ROAD DIST. NO. |             | ILLINOIS FED. AID PROJECT |              |           |
| CONTRACT NO. 62388  |             |                           |              |           |

Note: All steel rail elements shall be galvanized according to Article 509.05 of the Standard Specifications.

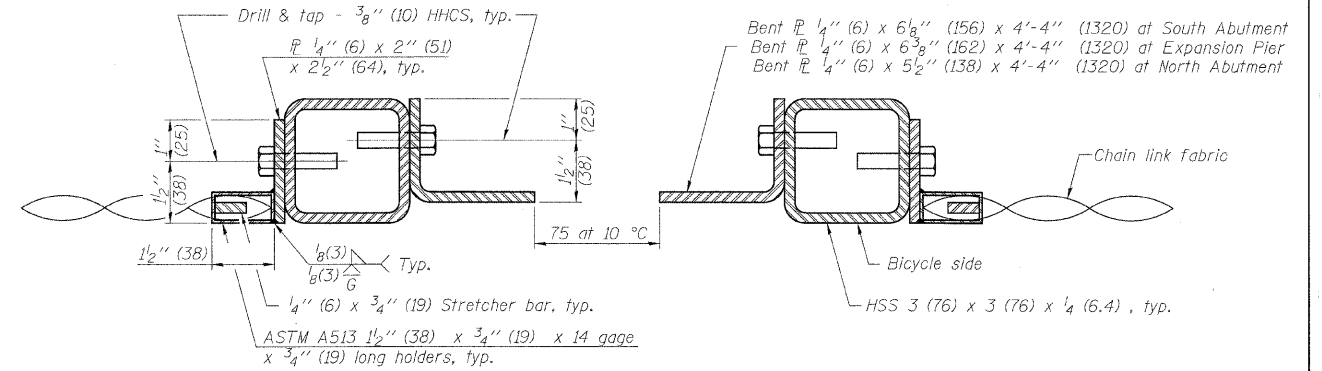


**BICYCLE RAILING**

**BICYCLE RAILING**

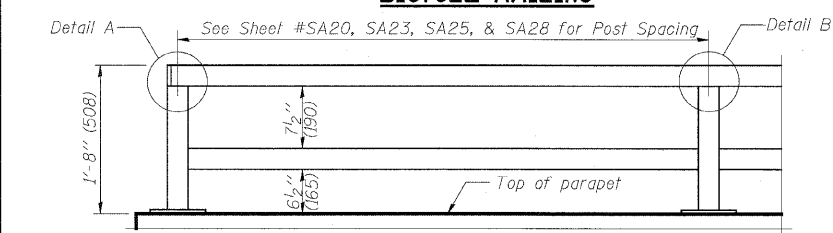


**DETAIL A**      **DETAIL B**      **DETAIL C**

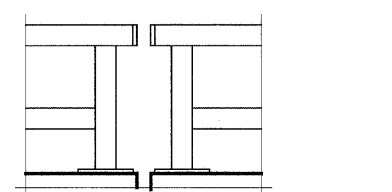


**SECTION A-A**

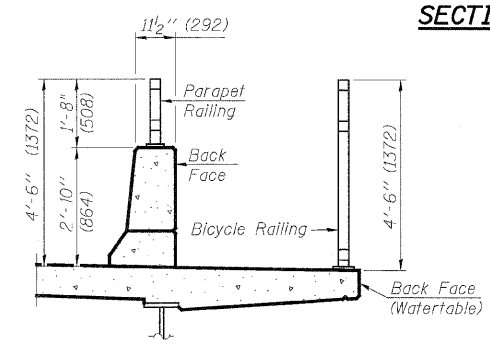
**SECTION THRU SIDEWALK**



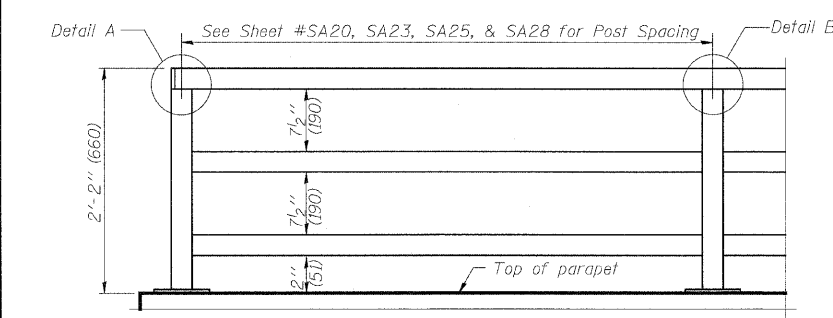
**PARAPET RAILING ELEVATION**  
(Inside Face of Two Element Rail)



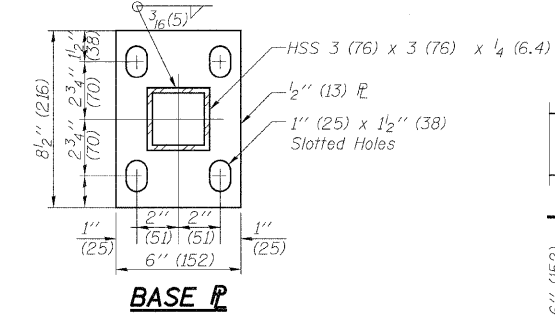
**PARAPET RAILING ELEVATION AT EXPANSION JOINT**  
(Two Element Rail Shown - Three Element Rail Similar)



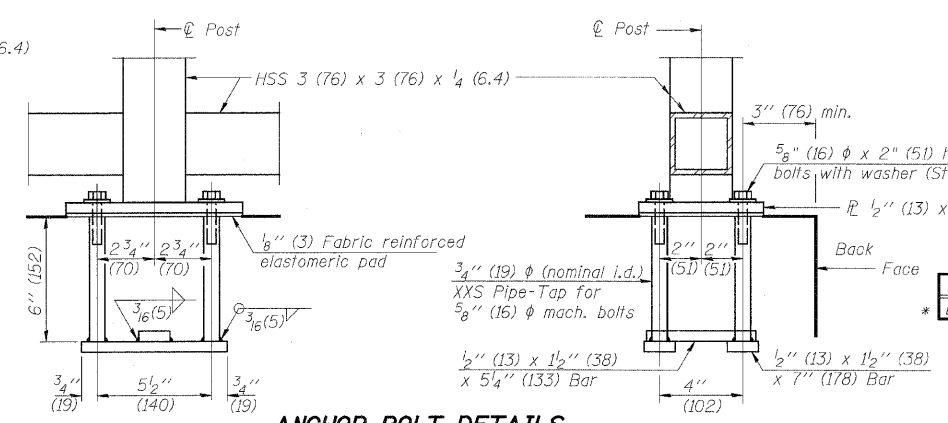
**SECTION THRU DECK**



**PARAPET RAILING ELEVATION**  
(Inside Face of Three Element Rail)



**BASE PLATE**



**ANCHOR BOLT DETAILS**

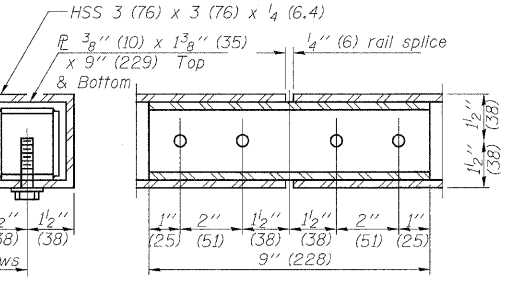
In lieu of the cast-in-place anchor device shown, the Contractor has the option of drilling and setting 5/8" (16) phi anchor rods according to Article 509.06 of the Standard Specifications. Embedment shall be according to the manufacturer's specifications.

**BILL OF MATERIAL**

| Item              | Unit | Quantity |
|-------------------|------|----------|
| * Bicycle Railing | m    | 417.6    |

\* Includes quantity of Bicycle Railing on Bridge Approach Pavements

**BICYCLE RAILING**



**RAIL SPLICE**

| REVISIONS |      | ILLINOIS DEPARTMENT OF TRANSPORTATION  |
|-----------|------|--|
| NAME      | DATE |  |
|           |      | <b>BICYCLE RAILING DETAILS I</b><br><b>SOUTHWEST HIGHWAY OVER</b><br><b>B&amp;O RAILROAD AND STONY CREEK</b><br><b>FAU 3578 SECTION 15V B-1-R-1</b><br><b>STRUCTURE NUMBER 016-2771</b><br><b>COOK COUNTY STATION 4+716.497</b><br><b>SCALE: NONE DRAWN BY: E. Mroozek</b><br><b>DATE: 6/17/09 CHECKED BY: A. Yargiooglu</b> |
|           |      |  |
|           |      |  |
|           |      |  |
|           |      |  |

All dimensions are in millimeters (mm) except as noted.

Q:\DOT\9556\_A0\Drawings\STRUCT\32\_bicycle\_railing.dgn  
 +Koeppen(Rdwy\_Lise) 6/26/2009 10:44:00 AM  
 R-29



10-1-08 (10'-0" (3.048 m) Maximum Post Spacing)