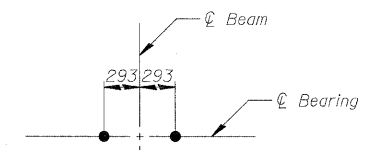


F.A.U. RTE.	SECTION	COUNTY	TOTAL SHEETS	SHEET NO.
3578	15V B-1-R-1	COOK	243	142
STA.		TO STA.		
FED. ROAD DIST. NO.		ILLINOIS FED. AID PROJECT		
CONTRACT NO. 62388				

NOTES

- Reinforcement bars designated (E) shall be Epoxy Coated.
 - Bars indicated thus 20 x 3 - #15 etc. indicates 20 lines of bars with 3 lengths per line.
 - All dimensions are in millimeters (mm) except as noted.
- ☐ - Indicates concrete placed after superstructure forms have been removed. Quantity of concrete included with Concrete Superstructure.

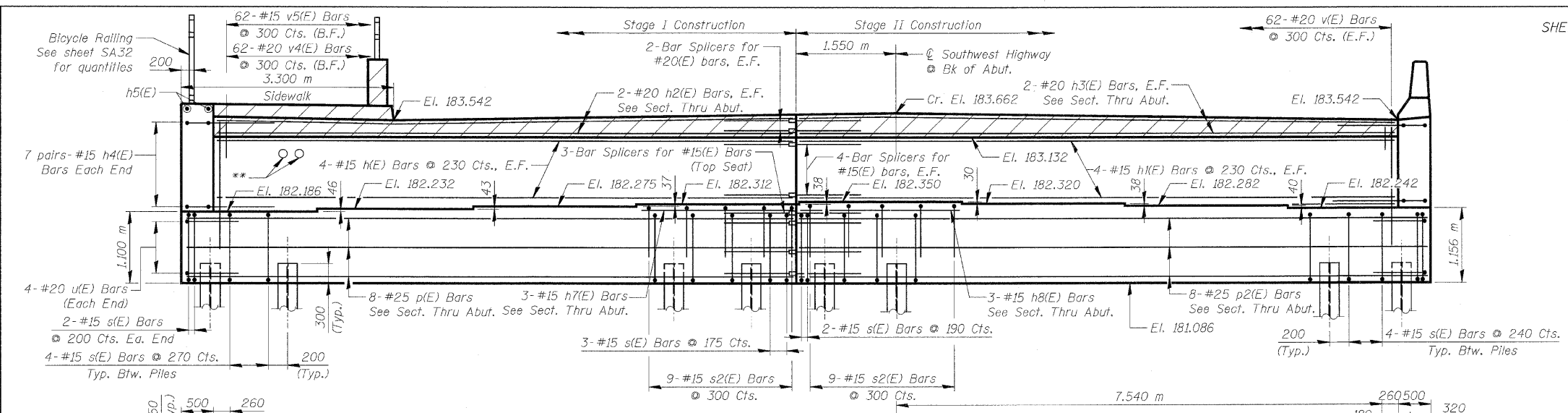


ANCHOR BOLT DETAIL

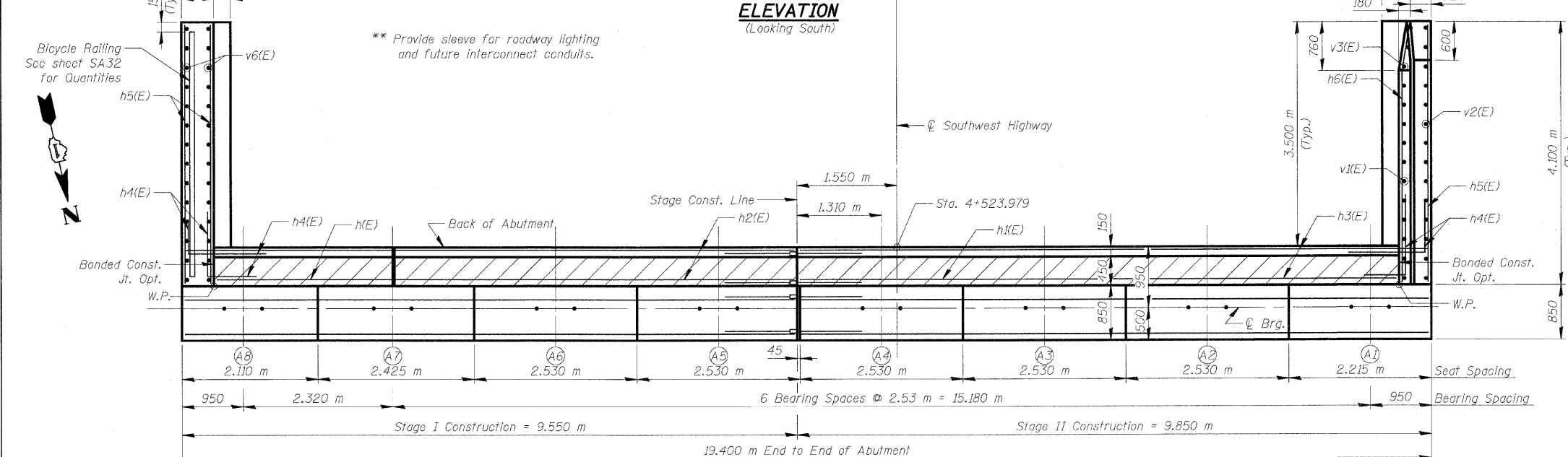
BILL OF MATERIAL

Bar	No.	Size	Length (m)	Shape
h(E)	8	#15	8.95	▬
h1(E)	8	#15	9.25	▬
h2(E)	4	#20	8.95	▬
h3(E)	4	#20	9.25	▬
h4(E)	28	#15	1.50	▬
h5(E)	28	#15	4.00	▬
h6(E)	8	#15	4.03	▬
h7(E)	3	#15	2.39	▬
h8(E)	3	#15	2.48	▬
n(E)	27	#20	3.20	▬
n1(E)	6	#20	1.60	▬
p(E)	8	#25	9.45	▬
p1(E)	12	#25	4.00	▬
p2(E)	8	#25	9.75	▬
s(E)	69	#15	4.98	▬
s1(E)	30	#15	2.92	▬
s2(E)	18	#15	2.71	▬
u(E)	8	#20	2.88	▬
v(E)	124	#20	1.70	▬
v1(E)	12	#20	1.98	▬
v2(E)	15	#20	1.91	▬
v3(E)	3	#20	1.67	▬
v4(E)	62	#20	0.99	▬
v5(E)	62	#15	0.81	▬
v6(E)	30	#20	1.37	▬

ITEM	UNIT	TOTAL
Porous Granular Embankment (Special)	m ³	81
Structure Excavation	m ³	200
Concrete Structures	m ³	55.5
Concrete Superstructure	m ³	5.4
Protective Coat	m ²	8
Reinforcement Bars, Epoxy Coated	kg	3,490
Concrete Sealer	m ²	17
Furnishing Steel Piles HP310x79	m	214.7
Driving Piles	m	214.7
Bar Splicers	Each	85
Pile Shoes	Each	19



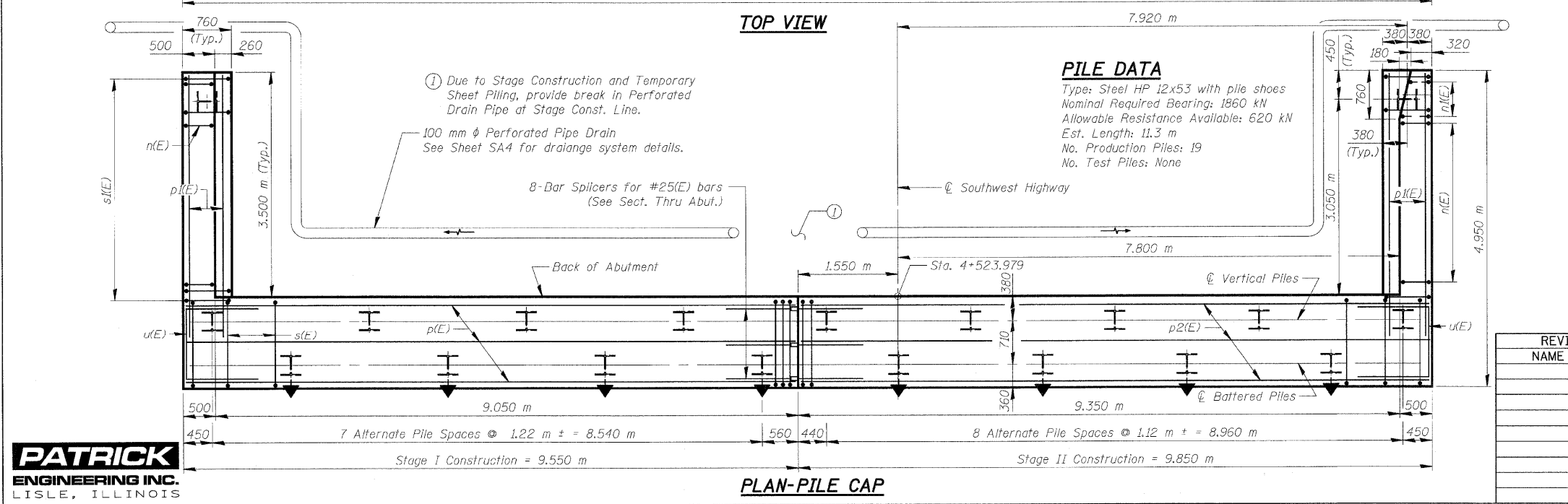
ELEVATION
(Looking South)



TOP VIEW

PILE DATA

Type: Steel HP 12x53 with pile shoes
 Nominal Required Bearing: 1860 kN
 Allowable Resistance Available: 620 kN
 Est. Length: 11.3 m
 No. Production Piles: 19
 No. Test Piles: None



PLAN-PILE CAP

REVISIONS	
NAME	DATE

ILLINOIS DEPARTMENT OF TRANSPORTATION
SOUTH ABUTMENT
SOUTHWEST HIGHWAY OVER
B&O RAILROAD AND STONY CREEK
 FAU 3578 SECTION 15V B-1-R-1
 STRUCTURE NUMBER 016-2771
 COOK COUNTY STATION 4+716.497
 SCALE: NONE DRAWN BY: M. Tryon
 DATE: 6/17/09 CHECKED BY: A. Yargoolgu



Q:\NDOT\9556_A0\Drawings\SI\PROJECT\47_S_Abut.dgn
 6/26/2009 8:33:09 AM
 hkoepfen(Rdwy_L) (s)