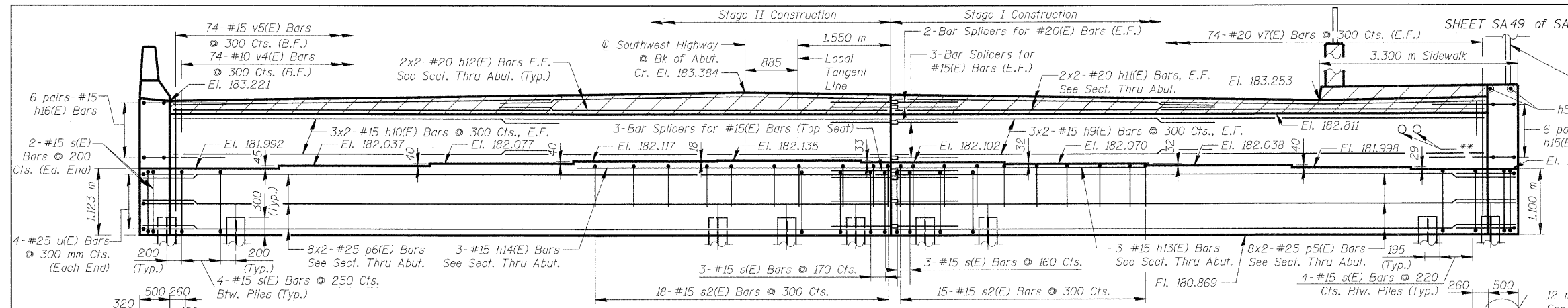


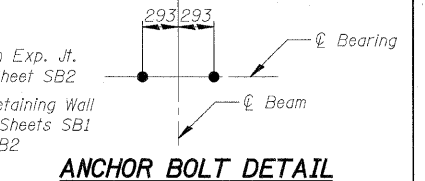
F.A.U. RTE.	SECTION	COUNTY	TOTAL SHEETS NO.	SHEET NO.
3578	15V B-1-R-1	COOK	243	144
STA.		TO STA.		
FED. ROAD DIST. NO.		ILLINOIS FED. AID PROJECT		
CONTRACT NO. 62388				



ELEVATION
(Looking North)

Bicycle Railing See sheet SA32 for Quantities
 ** Provide sleeve for roadway lighting and future interconnect conduits.

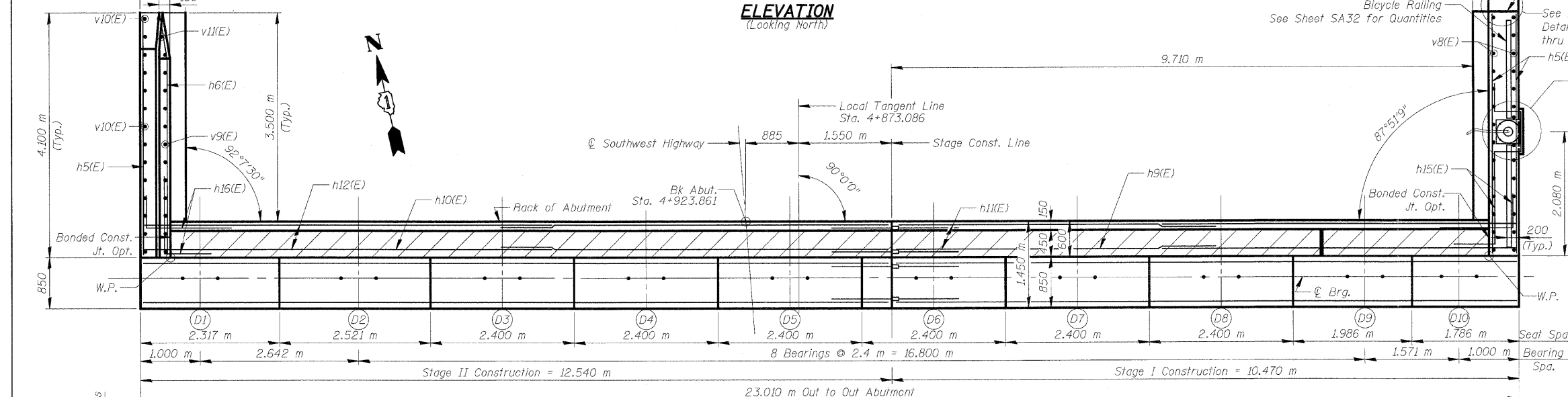
Indicates concrete placed after superstructure forms have been removed. Quantity of concrete included with Concrete Superstructure.



ANCHOR BOLT DETAIL

BILL OF MATERIAL

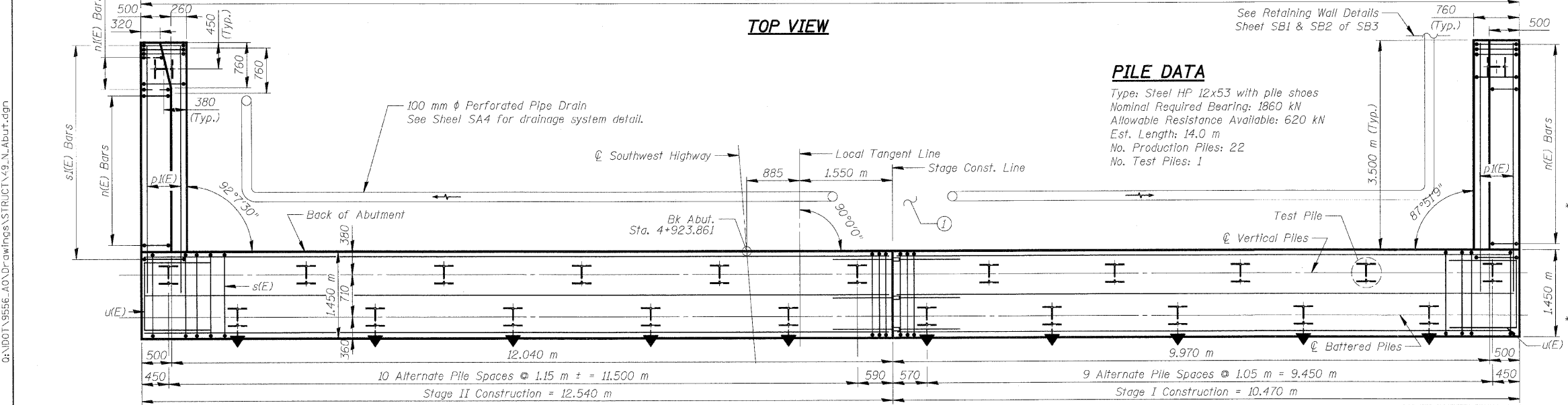
Bar	No.	Size	Length (m)	Shape
d10(E)	3	#20	1.22	
d11(E)	5	#20	2.68	
h5(E)	25	#15	4.00	
h6(E)	7	#15	4.03	
h9(E)	12	#15	5.29	
h10(E)	12	#15	6.33	
h11(E)	8	#20	5.38	
h12(E)	8	#20	6.42	
h13(E)	3	#15	4.20	
h14(E)	3	#15	5.20	
h15(E)	12	#15	1.50	
h16(E)	12	#15	1.50	
n(E)	27	#20	3.20	
n1(E)	6	#20	1.60	
p1(E)	12	#25	4.00	
p5(E)	8	#25	10.37	
p6(E)	8	#25	12.44	
s(E)	86	#15	4.98	
s1(E)	30	#15	2.92	
s2(E)	33	#15	2.71	
u(E)	8	#20	2.88	
v4(E)	74	#10	0.99	
v5(E)	74	#15	0.81	
v7(E)	148	#20	1.59	
v8(E)	30	#20	1.30	
v9(E)	15	#20	1.91	
v10(E)	12	#20	1.84	
v11(E)	3	#20	1.6	
ITEM	UNIT	TOTAL		
Porous Granular Embankment (Special)	m ³	90		
Structure Excavation	m ³	232		
Concrete Structures	m ³	61.5		
Concrete Superstructure	m ³	6.4		
Protective Coat	m ²	8		
Reinforcement Bars, Epoxy Coated	kg	4,000		
Concrete Sealer	m ²	20		
Furnishing Steel Piles HP310x79	m	308.0		
Driving Piles	m	308.0		
Test Pile Steel HP310x79	Each	1		
Bar Splicers	Each	95		
Pile Shoes	Each	23		



TOP VIEW

PILE DATA

Type: Steel HP 12x53 with pile shoes
 Nominal Required Bearing: 1860 kN
 Allowable Resistance Available: 620 kN
 Est. Length: 14.0 m
 No. Production Piles: 22
 No. Test Piles: 1



PLAN-PILE CAP

Due to Stage Construction and Temporary Sheet Piling, provide break in Perforated Drain Pipe at Stage Const. Line.

NOTES

- Reinforcement bars designated (E) shall be Epoxy Coated.
- Bars indicated thus 20 x 3 - #15 etc. indicates 20 lines of bars with 3 lengths per line.
- All dimensions are in millimeters (mm) except as noted.

REVISIONS	
NAME	DATE

ILLINOIS DEPARTMENT OF TRANSPORTATION
NORTH ABUTMENT
SOUTHWEST HIGHWAY OVER
B&O RAILROAD AND STONY CREEK
 FAU 3578 SECTION 15V B-1-R-1
 STRUCTURE NUMBER 016-2771
 COOK COUNTY STATION 4+716.497
 SCALE: NONE DRAWN BY: M. Tryon
 DATE: 6/17/09 CHECKED BY: A. Yarglooglu

6:26/2009 8:34:28 AM
 0:\DDOT\9556_40\Drawings\STRUCT\49_N_Abut.dgn
 kcoepen@rdwy.lisle
PATRICK ENGINEERING INC.
 LISLE, ILLINOIS