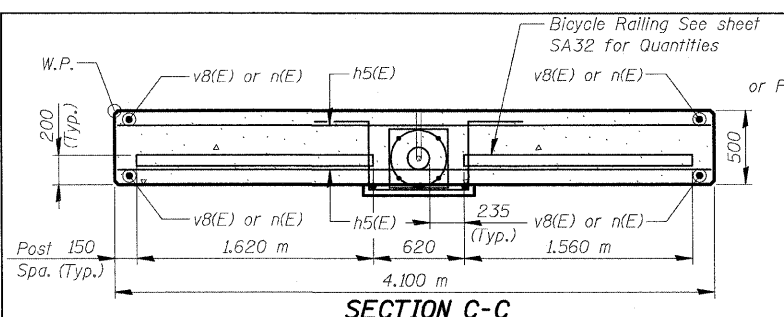
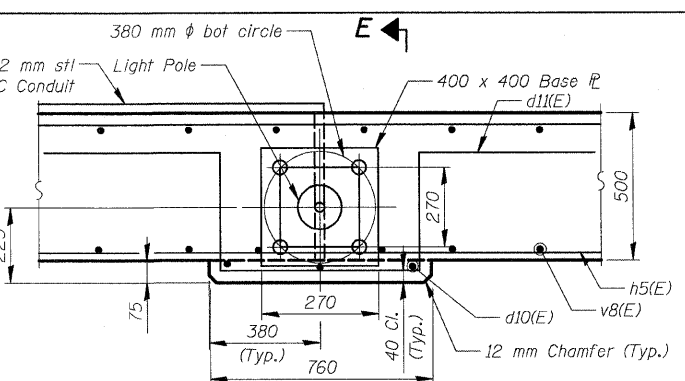


F.A.U. RTE.	SECTION	COUNTY	TOTAL SHEETS	SHEET NO.
3578	15V B-1-R-1	COOK	243	145
STA.		TO STA.		
FED. ROAD DIST. NO.		ILLINOIS	FED. AID PROJECT	
		CONTRACT NO. 62388		

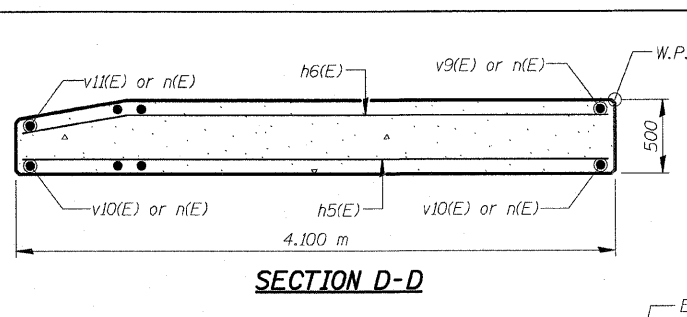
SHEET SA 50 of SA110



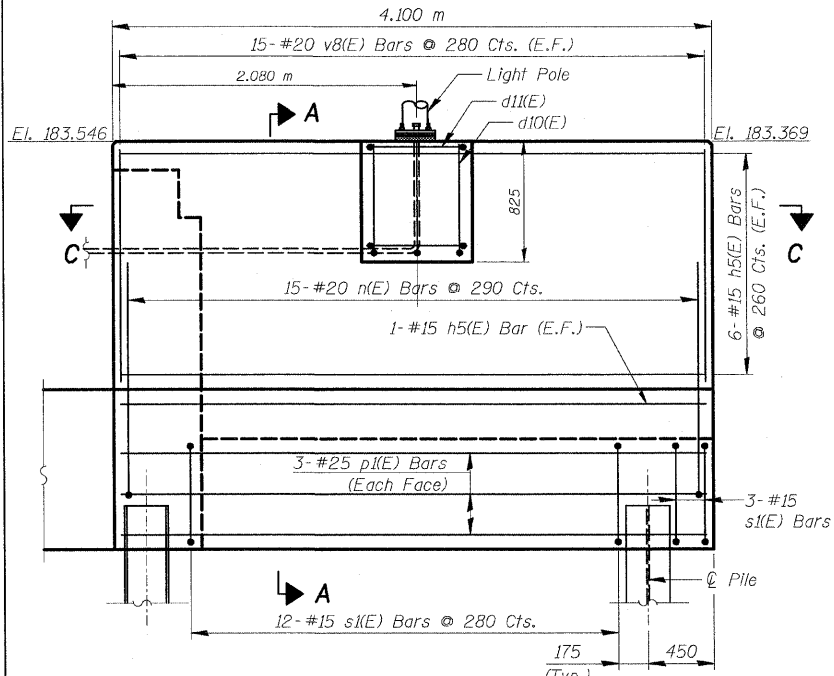
**SECTION C-C**



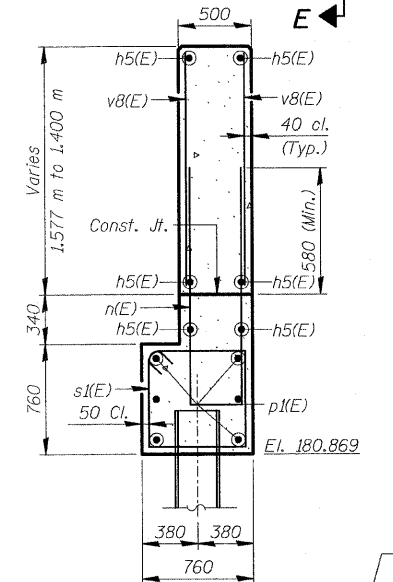
**DETAIL A**  
(Fence not shown for clarity)



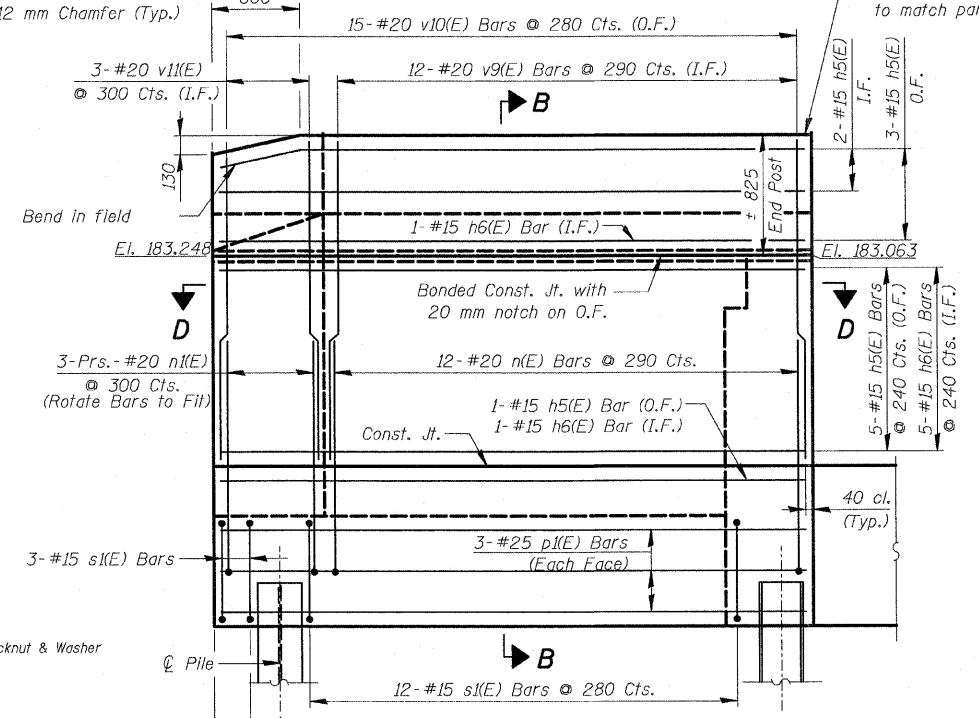
**SECTION D-D**



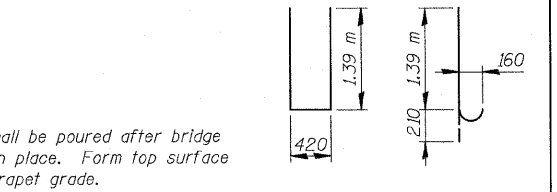
**WING WALL ELEVATION**  
(East Wingwall Looking Northwest)  
(Bicycle Railing not shown for clarity)



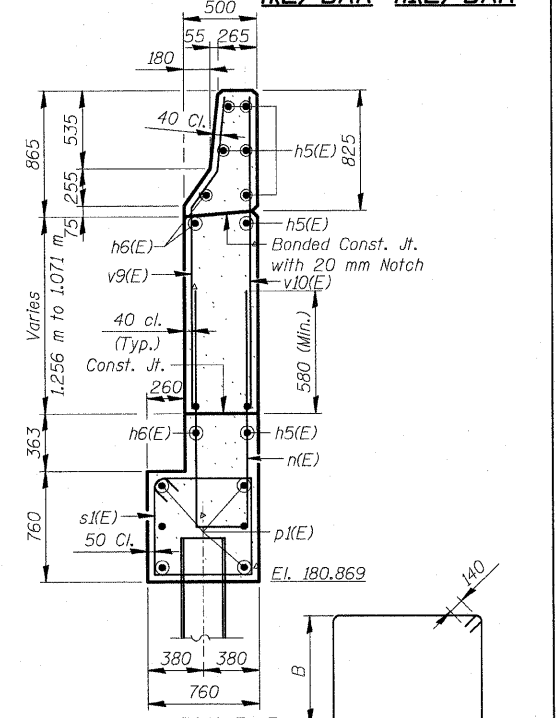
**SECTION A-A**



**WING WALL ELEVATION**  
(West Wingwall Looking Southeast)



**n(E) BAR n(E) BAR**



**SECTION B-B**

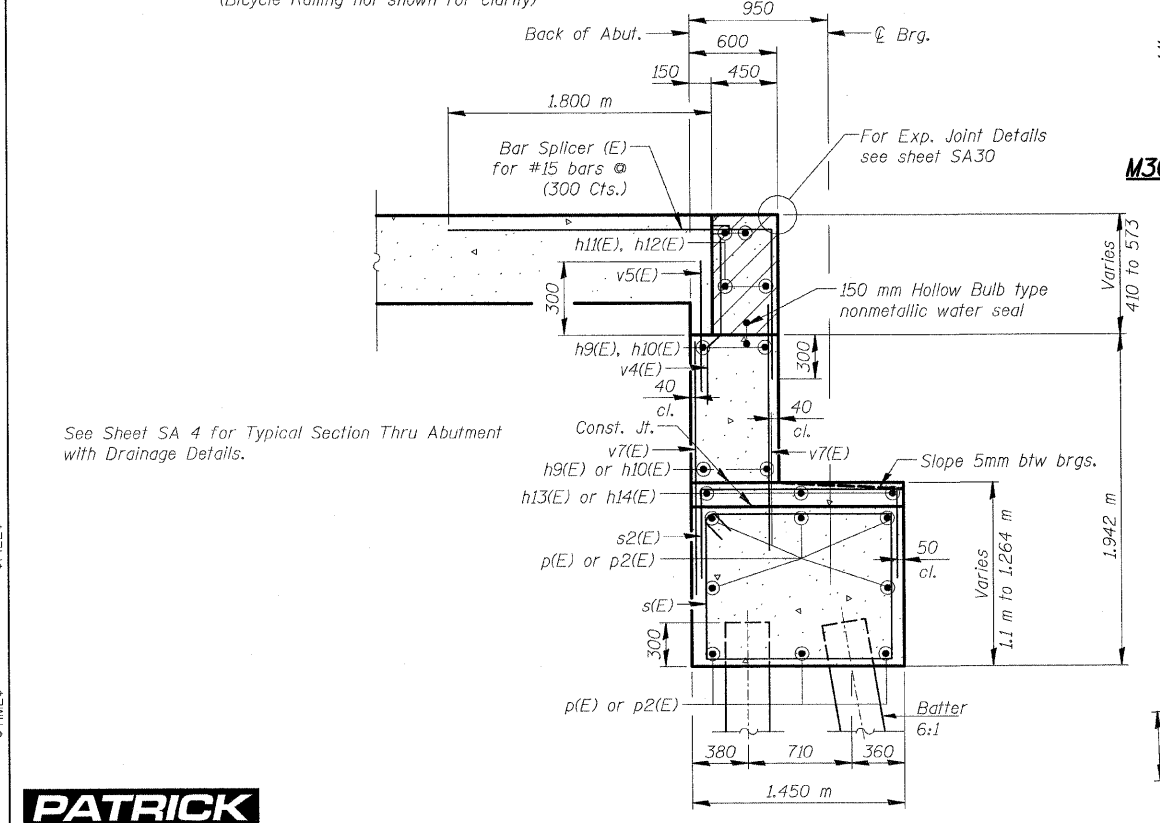
**s(E) & s(E) BARS BENT BAR DIMENSIONS**

Bar	A	B
s(E)	1.35 m	1.0 m
s(E)	660	660
s2(E)	1.35 m	680
u(E)	1.3 m	790

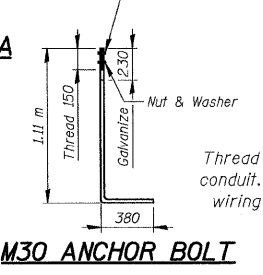
**s2(E) & u(E) BARS**

**NOTES**

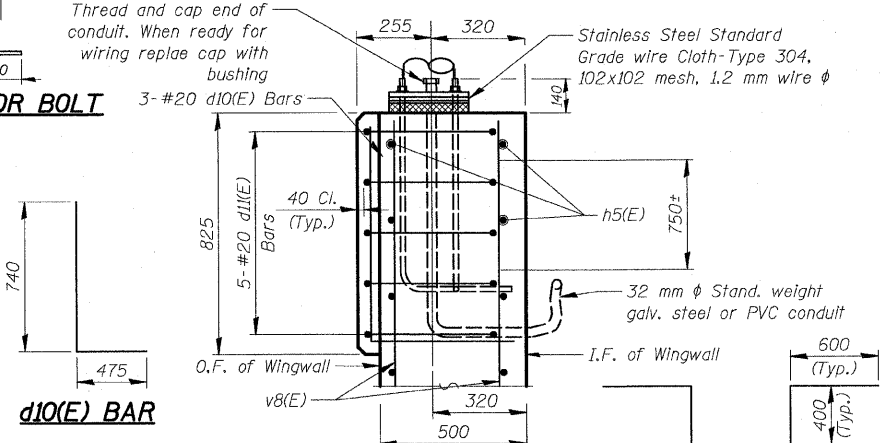
- Hatched area to be poured after superstructure forms have been removed. Quantity of concrete included with Concrete Superstructure.
- Space reinforcement in cap to miss anchor bolts.
- Pour steps monolithically with cap.
- Reinforcement bars designated (E) shall be epoxy coated.
- Quantity of concrete in end post included with Concrete Superstructure on sheet SA21.
- All dimensions are in millimeters (mm) except as noted.
- E.F. = Each Face, I.F. = Inside Face, O.F. = Outside Face
- Cost of Anchor Bolts & Conduit included with Concrete Structures.



**SECTION THRU ABUTMENT**  
Dimensions @ Rt. L's



**M30 ANCHOR BOLT**



**SECTION E-E**

**d10(E) BAR**

**h5(E) BAR**

**h6(E) BAR**

**v9(E) BAR**

**v10(E) BAR**

**v4(E) BAR**

REVISIONS	
NAME	DATE

**ILLINOIS DEPARTMENT OF TRANSPORTATION**  
**NORTH ABUTMENT DETAILS**  
**SOUTHWEST HIGHWAY OVER**  
**B&O RAILROAD AND STONY CREEK**  
 FAU 3578 SECTION 15V B-1-R-1  
 STRUCTURE NUMBER 016-2771  
 COOK COUNTY STATION 4+716.497  
 SCALE: NONE DRAWN BY: M. Tryon  
 DATE: 6/17/09 CHECKED BY: A. Yargolou

\$FILES \$TIMES \$DATES  
**PATRICK ENGINEERING INC.**  
 LISLE, ILLINOIS