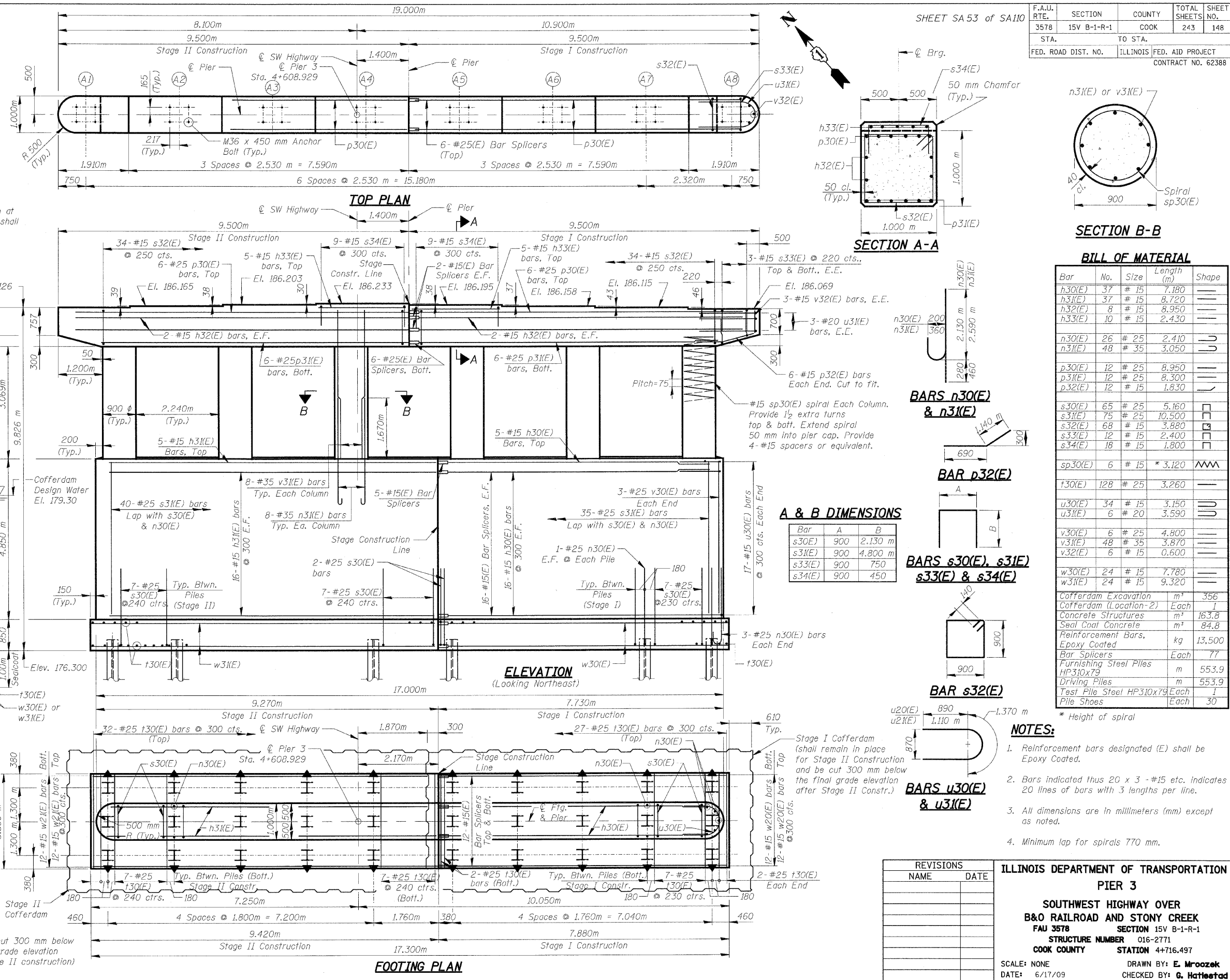


**NOTES:**  
 Space Reinforcement in cap to miss anchor bolts.  
 All edges shall have standard 20 mm chamfer except as noted.  
 Pour steps monolithically with cap.

TYP. LAP SPLICE	
BAR SIZE	MIN. LAP
#15	890 mm
#20	1,110 m
#25	1,850 m

\*\* The bottom of the cofferdam shall be at EL 172.19 or lower. The cofferdam shall have a minimum section modulus of 268,000 mm<sup>2</sup>/m.



F.A.U. RTE.	SECTION	COUNTY	TOTAL SHEETS NO.	SHEET NO.
3578	15V B-1-R-1	COOK	243	148
STA. TO STA.		FED. ROAD DIST. NO. ILLINOIS FED. AID PROJECT		
		CONTRACT NO. 62388		

**BILL OF MATERIAL**

Bar	No.	Size	Length (m)	Shape
h30(E)	37	#15	7,180	—
h31(E)	37	#15	8,720	—
h32(E)	8	#15	8,950	—
h33(E)	10	#15	2,430	—
n30(E)	26	#25	2,410	—
n31(E)	48	#35	3,050	—
p30(E)	12	#25	8,950	—
p31(E)	12	#25	8,300	—
p32(E)	12	#15	1,830	—
s30(E)	65	#25	5,160	—
s31(E)	75	#25	10,500	—
s32(E)	68	#15	3,880	—
s33(E)	12	#15	2,400	—
s34(E)	18	#15	1,800	—
sp30(E)	6	#15	* 3,120	—
t30(E)	128	#25	3,260	—
u30(E)	34	#15	3,150	—
u31(E)	6	#20	3,590	—
v30(E)	6	#25	4,800	—
v31(E)	48	#35	3,870	—
v32(E)	6	#15	0,600	—
w30(E)	24	#15	7,780	—
w31(E)	24	#15	9,320	—
Cofferdam Excavation		m <sup>3</sup>	356	
Cofferdam (Location-2)		Each	1	
Concrete Structures		m <sup>3</sup>	163.8	
Seal Coat Concrete		m <sup>3</sup>	84.8	
Reinforcement Bars, Epoxy Coated		kg	13,500	
Bar Splicers		Each	77	
Furnishing Steel Piles HP310x79		m	553.9	
Driving Piles		m	553.9	
Test Pile Steel HP310x79		Each	1	
Pile Shoes		Each	30	

\* Height of spiral

**NOTES:**

- Reinforcement bars designated (E) shall be Epoxy Coated.
- Bars indicated thus 20 x 3 -#15 etc. indicates 20 lines of bars with 3 lengths per line.
- All dimensions are in millimeters (mm) except as noted.
- Minimum lap for spirals 770 mm.

REVISIONS	
NAME	DATE

**ILLINOIS DEPARTMENT OF TRANSPORTATION**  
**PIER 3**  
**SOUTHWEST HIGHWAY OVER**  
**B&O RAILROAD AND STONY CREEK**  
 FAU 3578 SECTION 15V B-1-R-1  
 STRUCTURE NUMBER 016-2771  
 COOK COUNTY STATION 4+716.497  
 SCALE: NONE DRAWN BY: E. Mroozek  
 DATE: 6/17/09 CHECKED BY: G. Hattestad

6/26/2009 8:41:3 AM C:\DOT\9556.A0\Drawings\STRUCT\53 Pier 3.dgn H:\cooper\rdwy\lisle

**PATRICK ENGINEERING INC.**  
 LISLE, ILLINOIS

**PILE DATA**  
 Type: Steel HP 12x53 with pile shoes  
 Nominal Required Bearing: 1860 kN  
 Allowable Resistance Available: 562 kN  
 Est. Length: 19.1 m  
 No. Production Piles: 29  
 No. Test Piles: 1

**END VIEW**

\*\*Limits of Cofferdam

