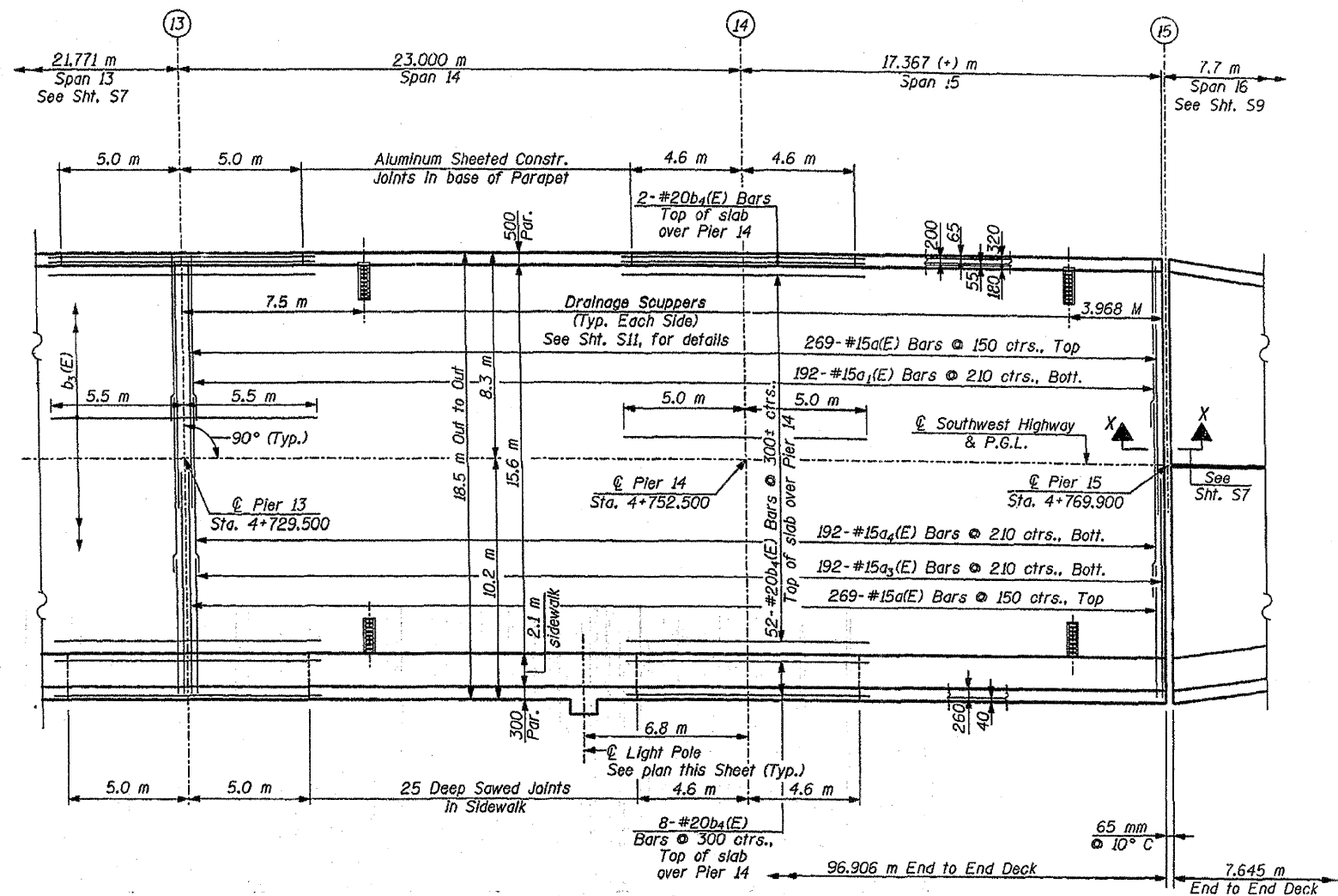
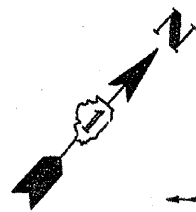
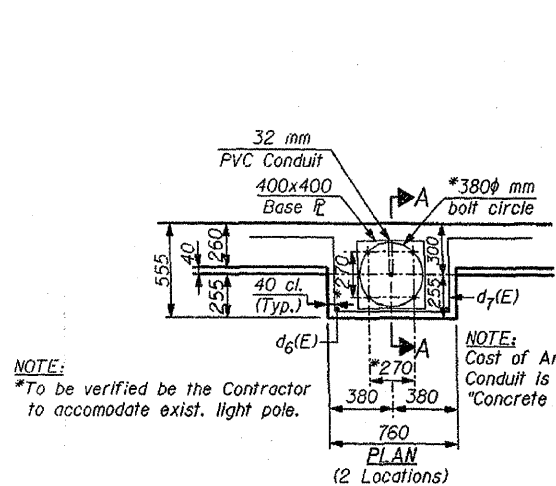


F.A.U. RTE.	SECTION	COUNTY	TOTAL SHEETS	SHEET NO.
3578	15VB-1-R	COOK	243	182
STA. 4+665.229		TO STA. 4+777.600		
FED. ROAD DIST. NO. 7		ILLINOIS FED. AID PROJECT		



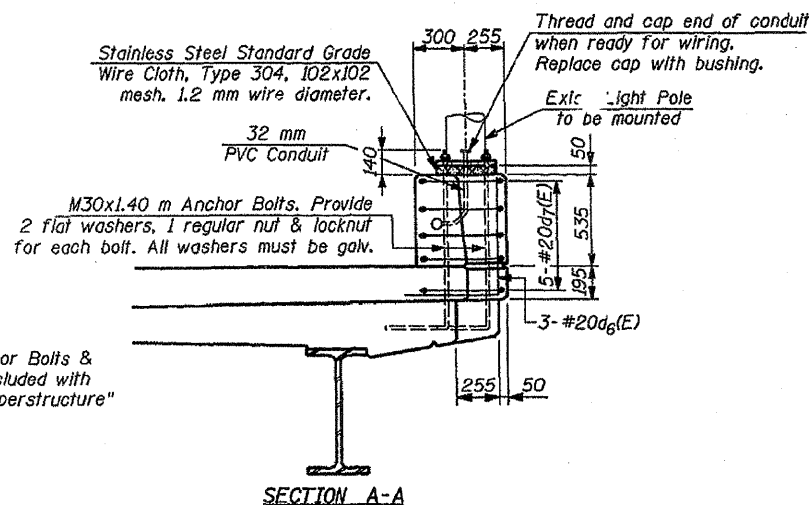
DECK PLAN - SPANS 14 & 15

- Notes:
- See Sht. S11 for Superstructure Details and Bill Of Material.
 - Reinforcement Bars designated (E) shall be Epoxy Coated.
 - See Sht. S10 for Parapet reinforcement.
 - See Sht. S11 for Deck Cross Section.
 - See Sht. S11 for Drainage Scupper Details.
 - See Sht. S13 for Expansion Joint Details.
 - See Sht. S7 for Slab Pouring Sequence Detail.
 - Cut longitudinal reinforcement in order to clear Drainage Scupper.
 - All dimensions are in millimeter (mm) except as noted.

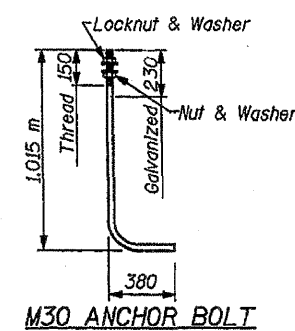


NOTE:
*To be verified by the Contractor to accommodate exist. light pole.

LIGHT POLE (EXIST.)
MOUNTED ON CONCRETE PARAPET



SECTION A-A



M30 ANCHOR BOLT

REVISIONS	
NAME	DATE

ILLINOIS DEPARTMENT OF TRANSPORTATION

DECK PLAN-SPAN 14 AND 15
AND SLAB CROSS SECTION
SOUTHWEST HIGHWAY OVER
B. & O.C.T. RAILROAD AND MELVINA DITCH
F.A.U. ROUTE 3578 SEC. 15VB-1-R
COOK COUNTY STATION 4+716.471
STRUCTURE NO. 016-0463

SCALE: 6/17/09
DATE: DRAWN BY: F. MUNIR
CHECKED BY: B. SHAH

CHRISTIAN - ROGE & ASSOC.
CHICAGO ILLINOIS

FOR INFORMATION ONLY