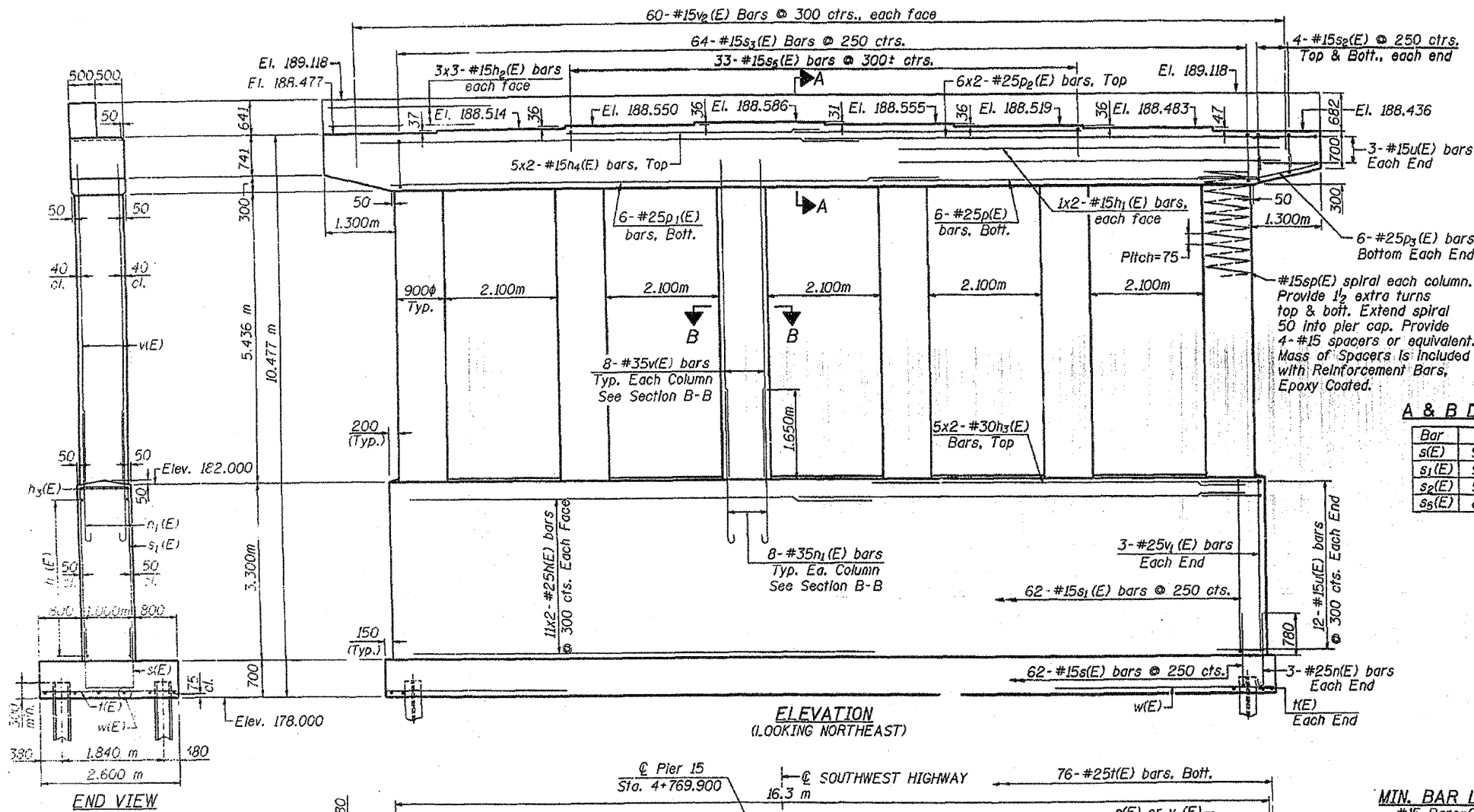
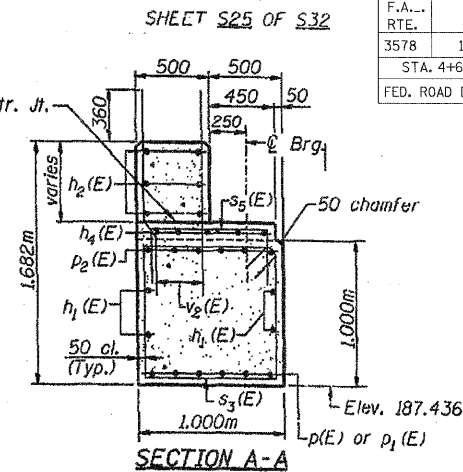
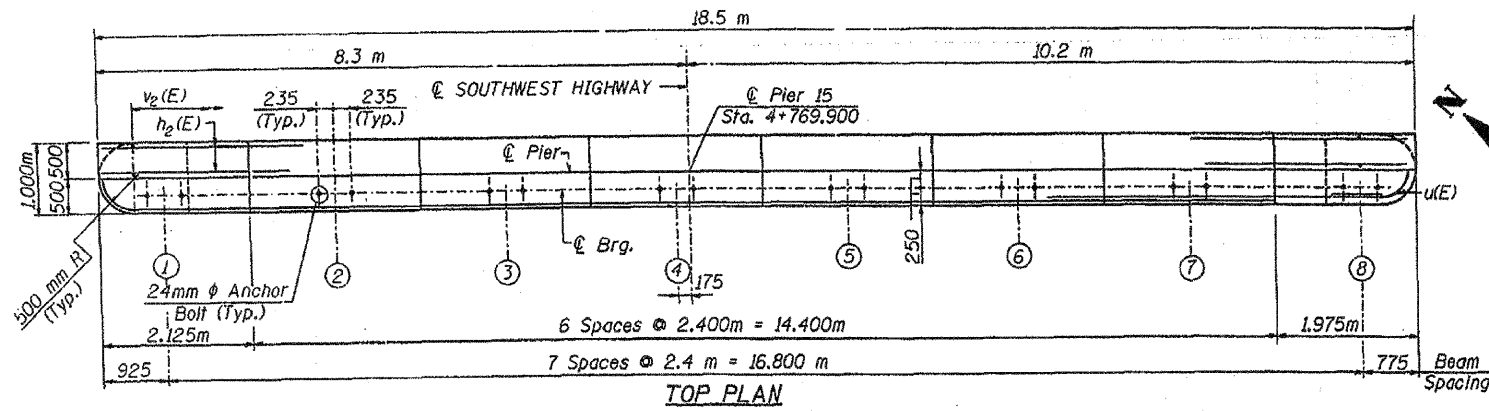


F.A. RTE.	SECTION	COUNTY	TOTAL SHEETS NO.
3578	15VB-1-R	COOK	243 199
STA. 4+665.229		TO STA. 4+777.600	
FED. ROAD DIST. NO. 7 ILLINOIS FED. AID PROJECT			

NOTES:
 1. Place Reinforcement in cap to miss anchor bolts.
 2. All edges shall have standard 20 mm chamfer except as noted.
 3. Pour steps monolithically with cap.
 4. Min. Spiral lap = 1/2 turns.
 5. Bars indicated thus 6x2-#25 etc. indicates 6 Lines of bars with 2 angles per line.



A & B DIMENSIONS

Bar	A	B
s(E)	900	1.41
s1(E)	900	3.22
s2(E)	900	770
s3(E)	800	450

MIN. BAR LAPS

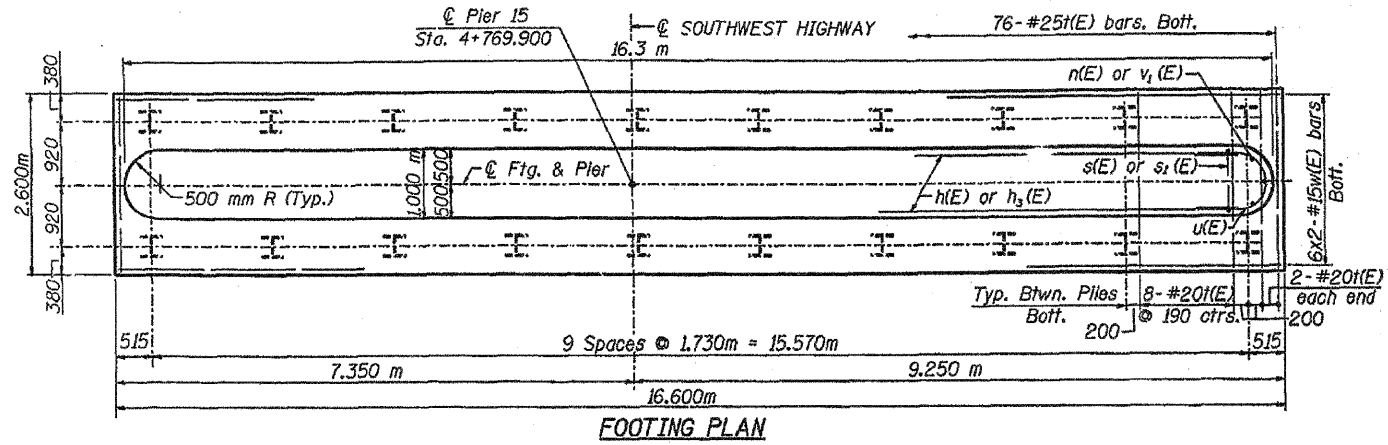
#15 Bars=640
 #25 Bars=1320
 #30 Bars=1850

BILL OF MATERIAL

Bar	No.	Size	Length (m)	Shape	
h(E)	44	#25	8.76	—	
h1(E)	8	#15	9.12	—	
h2(E)	18	#15	6.56	—	
h3(E)	10	#30	8.63	—	
h4(E)	10	#15	5.07	—	
n(E)	6	#25	1.69	U	
n1(E)	48	#35	2.71	U	
p(E)	6	#25	7.16	—	
p1(E)	6	#25	10.16	—	
p2(E)	12	#25	9.46	—	
p3(E)	12	#25	2.56	—	
s(E)	62	#15	3.72	□	
s1(E)	62	#15	7.34	□	
s2(E)	16	#15	2.44	□	
s3(E)	64	#15	3.88	□	
s5(E)	33	#15	1.70	□	
sp(E)	6	#15	5.44	~	
t(E)	76	#20	2.50	—	
u(E)	30	#15	2.61	U	
v(E)	48	#35	6.15	—	
v1(E)	6	#25	3.20	—	
v2(E)	120	#15	1.36	—	
w	12	#15	8.57	—	
Furnishing Steel Piles HP 310x79				m	171
Test Piles Steel HP 310x79				Each	1
Concrete Structure				m ³	127.0
Reinforcement Bars, Epoxy Coated				Kg	12,090
Structure Excavation				m ³	151

Reinforcement Bars designated (E) shall be epoxy coated.
 All dimensions are in millimeters (mm) except as noted.

PILE DATA
 Type: Steel Friction Piles HP 310x79
 Capacity: 600 Kn capacity driven to 900 Kn bearing
 Est. Length: 9.000 m
 No. Required: 19+1 Test Pile in a permanent location



REVISIONS	
NAME	DATE

ILLINOIS DEPARTMENT OF TRANSPORTATION
PIER 15 DETAILS
 SOUTHWEST HIGHWAY OVER
 B. & O.C.T. RAILROAD AND MELVINA DITCH
 F.A.U. ROUTE 3578 SEC. 15VB-1-R
 COOK COUNTY STATION 4+716.471
 STRUCTURE NO. 016-0463
 SCALE: DATE: 6/17/09 DRAWN BY: F. MUNIR CHECKED BY: B. SHAH
CHRISTIAN - ROGE & ASSOC.
 CHICAGO ILLINOIS

FOR INFORMATION ONLY