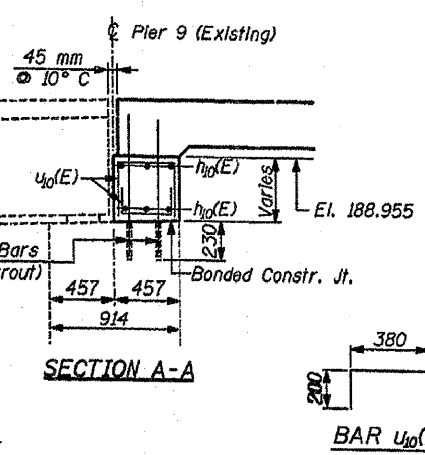
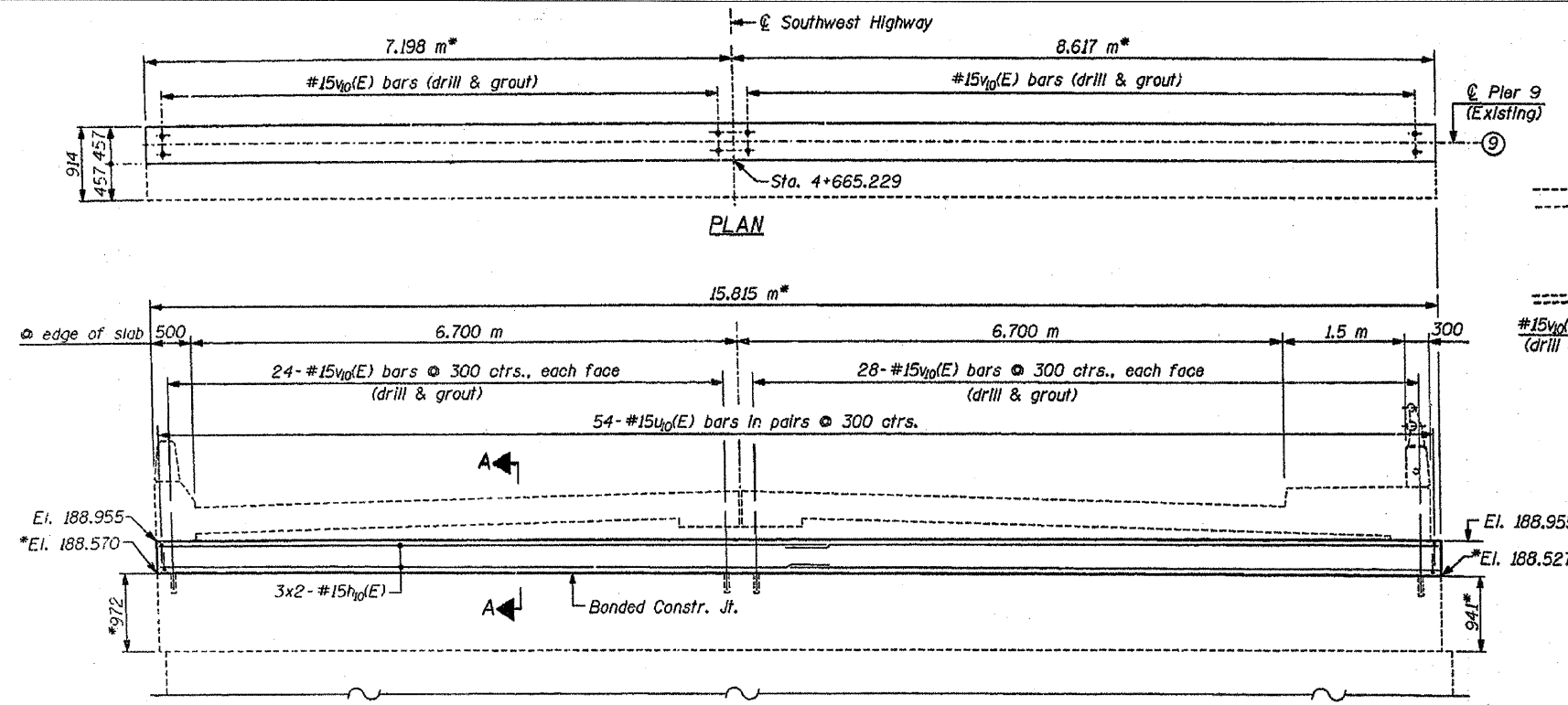


F.A. RTE.	SECTION	COUNTY	TOTAL SHEETS	SHEET NO.
3578	15VB-1-R	COOK	243	200
STA. 4+665.229		TO STA. 4+777.600		
FED. ROAD DIST. NO. 7		ILLINOIS	FED. AID PROJECT	



**BILL OF MATERIAL
PIER 9**

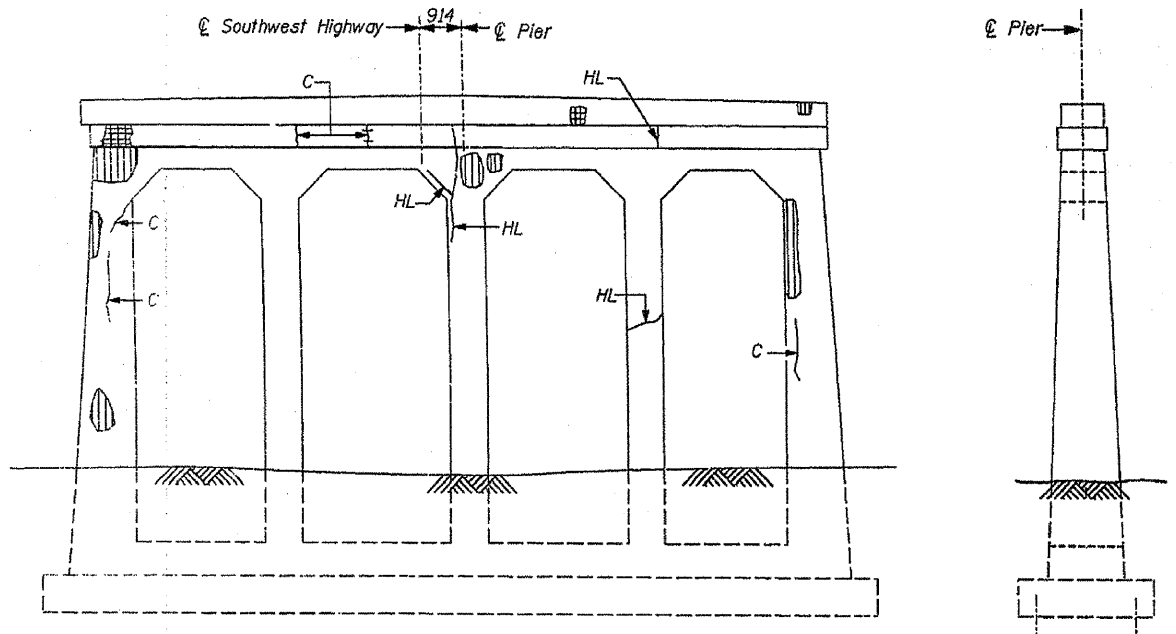
Bar	No.	Size	Length (m)	Shape
h0(E)	12	#15	8.20	—
v0(E)	108	#15	0.78	L
v0(E)	104	#15	.960	—
Concrete Structures			m ³	3.0
Reinforcement Bars, Epoxy Coated			kg	440
Epoxy Crack Sealing			m	40
High Performance Enhanced Shotcrete			m ²	17.2
Polymer Modified Portland Cement Mortar			m ³	0.3

Reinforcement Bars designated (E) shall be Epoxy Coated.
All dimensions are in millimeter (mm) except as noted.

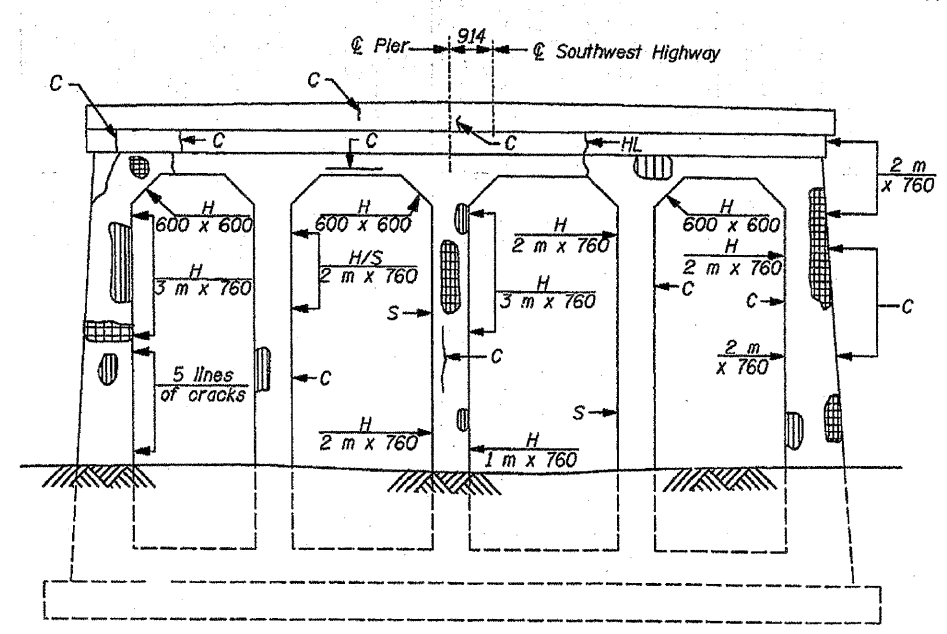
PIER CAP ELEVATION
(Looking Northeast)
* Dimensions measured in field to be verified by the Contractor.

MIN. LAP.
#15 Bars=640

NOTES:
Bars indicated thus 3x2-#15 ect., indicate 3 lines of bars with 2 lengths per lines.
Drill and grout #15v0(E) bars in 22 mm ϕ x 230 mm min. deep drilled holes. The grout and method of application shall be approved by the Department.



EXISTING ELEVATION-PIER 9
(LOOKING NORTHEAST)



EXISTING ELEVATION-PIER 9
(LOOKING SOUTHWEST)

LEGEND:

- Indicates limits of Epoxy Crack Sealing.
- ▨ Limits of High Performance Enhanced Shotcrete.
- H & H/S Limits of High Performance Enhanced Shotcrete
- ▨ Limits of Polymer Modified Portland Cement Mortar.
- H Hollow
- C Crack
- HL Hairline Crack

REVISIONS

NAME	DATE

ILLINOIS DEPARTMENT OF TRANSPORTATION
PIER 9 (EXISTING) DETAILS
SOUTHWEST HIGHWAY OVER
B. & O.C.T. RAILROAD AND MELVINA DITCH
F.A.U. ROUTE 3578 SEC. 15VB-1-R
COOK COUNTY STATION 4+716.471
STRUCTURE NO. 016-0463
SCALE: DATE: 6/17/09
DRAWN BY: F. MUNIR
CHECKED BY: B. SHAH
CHRISTIAN - ROGE & ASSOC.
CHICAGO ILLINOIS

FOR INFORMATION ONLY