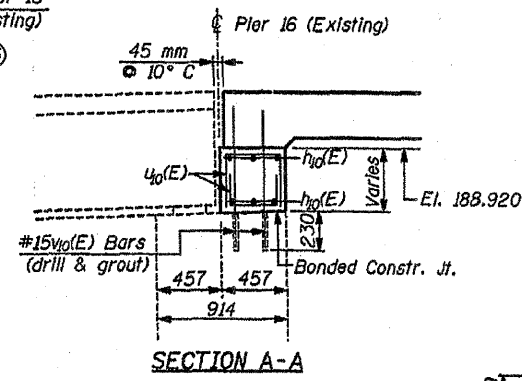
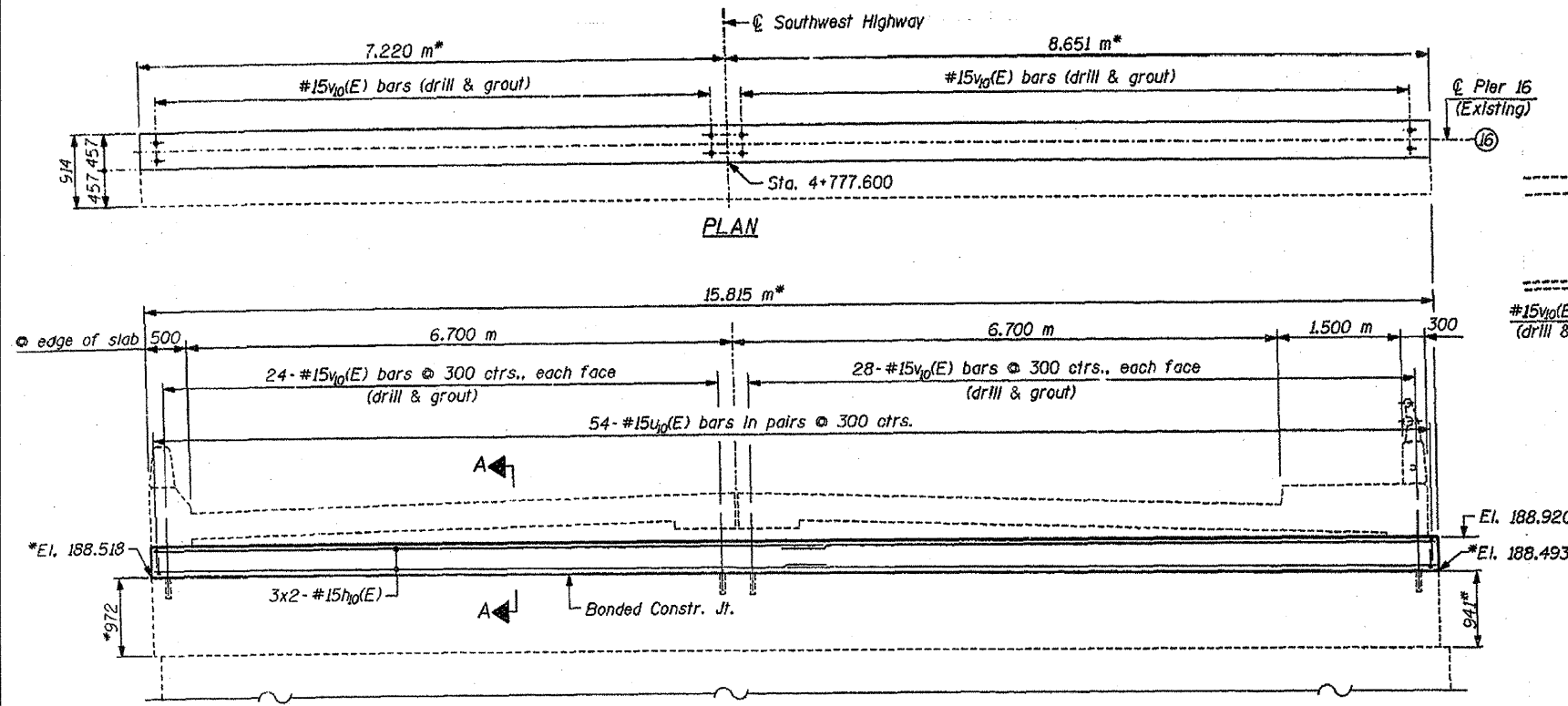


F.A.U. RTE.	SECTION	COUNTY	TOTAL SHEETS NO.	SHEET NO.
3578	15VB-1-R	COOK	243	201
STA. 4+665.229		TO STA. 4+777.600		
FED. ROAD DIST. NO. 7		ILLINOIS FED. AID PROJECT		



**BILL OF MATERIAL
PIER 16**

Bar	No.	Size	Length (m)	Shape	
$h_p(E)$	12	#15	8.20	—	
$u_p(E)$	108	#15	0.78	└┘	
$v_p(E)$	104	#15	0.960	—	
Concrete Structures				m ³	3.0
Reinforcement Bars, Epoxy Coated				kg	440
Epoxy Crack Sealing				m	20
High Performance Enhanced Shotcrete				m ²	28
Polymer Modified Portland Cement Mortar				m ³	0.9
Formed Concrete Repair (Depth ≤ 125)				m ²	0.1

Reinforcement Bars designated (E) shall be Epoxy Coated.

All dimensions are in millimeter (mm) except as noted.

PIER CAP ELEVATION
(Looking Northeast)

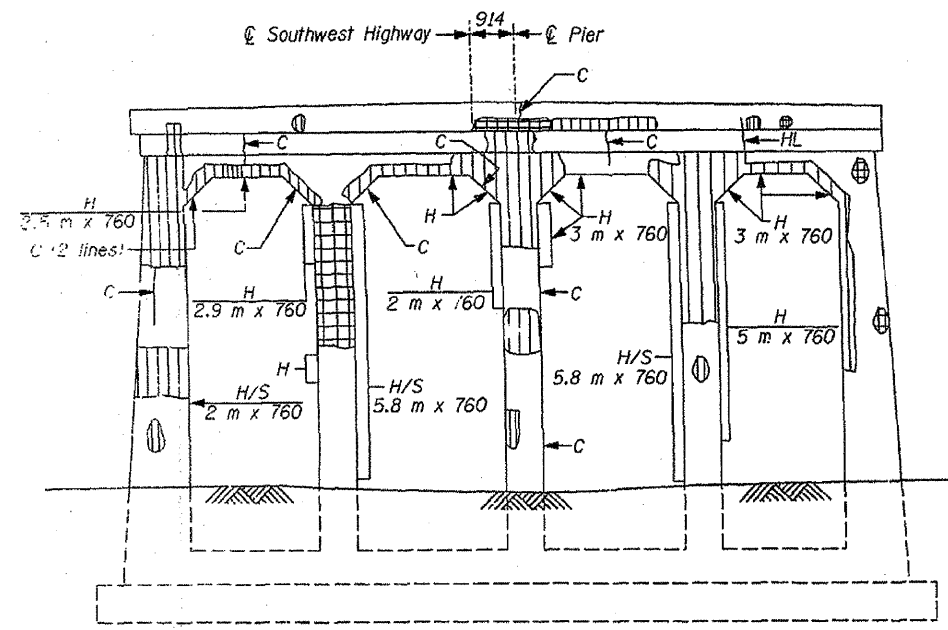
* Dimensions measured in field to be verified by the Contractor.

MIN. LAP
#15 Bars=640

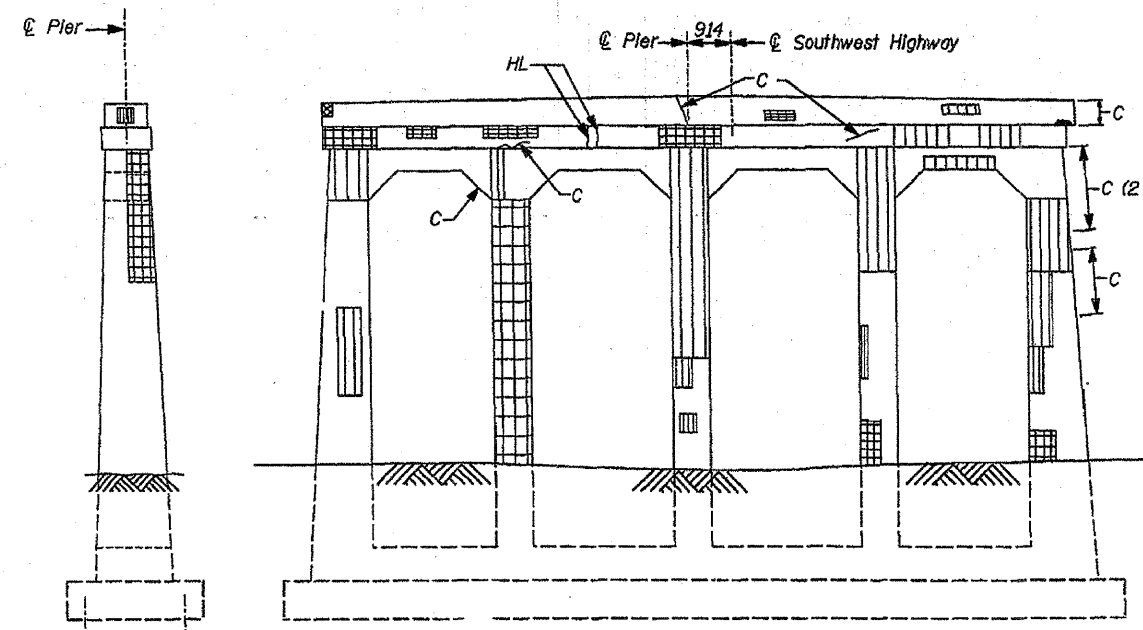
NOTES:

Bars Indicated thus 3x2-#15 ect., indicate 3 lines of bars with 2 lengths per lines.

Drill and grout #15 $v_p(E)$ bars in 22 mm ϕ x 230 mm min. deep drilled holes. The grout and method of application shall be approved by the Department.



EXISTING ELEVATION-PIER 16
(LOOKING NORTHEAST)



EXISTING ELEVATION-PIER 16
(LOOKING SOUTHWEST)

LEGEND:

- Indicates limits of Epoxy Crack Sealing.
- ▨ Limits of High Performance Enhanced Shotcrete.
- H & H/S Limits of High Performance Enhanced Shotcrete
- ▤ Limits of Polymer Modified Portland Cement Mortar.
- ▩ Formed Concrete Repair (Depth ≤ 125)
- H Hollow
- C Crack
- HL Hairline Crack

REVISIONS	
NAME	DATE

ILLINOIS DEPARTMENT OF TRANSPORTATION

PIER 16 (EXISTING) DETAILS

SOUTHWEST HIGHWAY OVER
B. & O.C.T. RAILROAD AND MELVINA DITCH
F.A.U. ROUTE 3578 SEC. 15VB-1-R
COOK COUNTY STATION 4+716.471
STRUCTURE NO. 016-0463

SCALE: DATE: 6/11/09
DRAWN BY: F. MUNIR
CHECKED BY: B. SHAH

CHRISTIAN - ROGE & ASSOC.
CHICAGO ILLINOIS