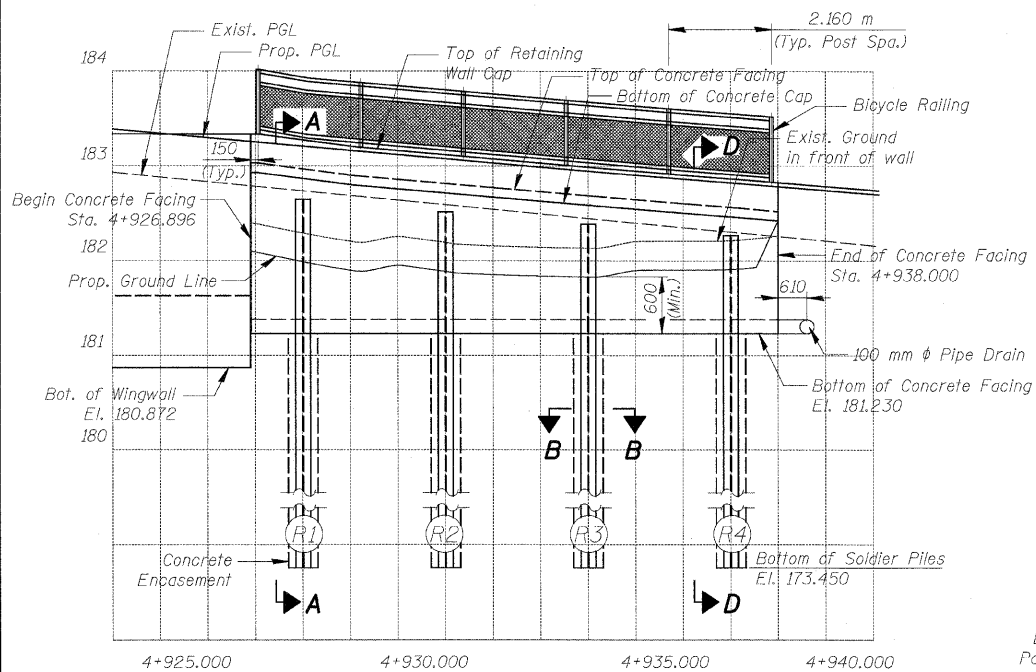
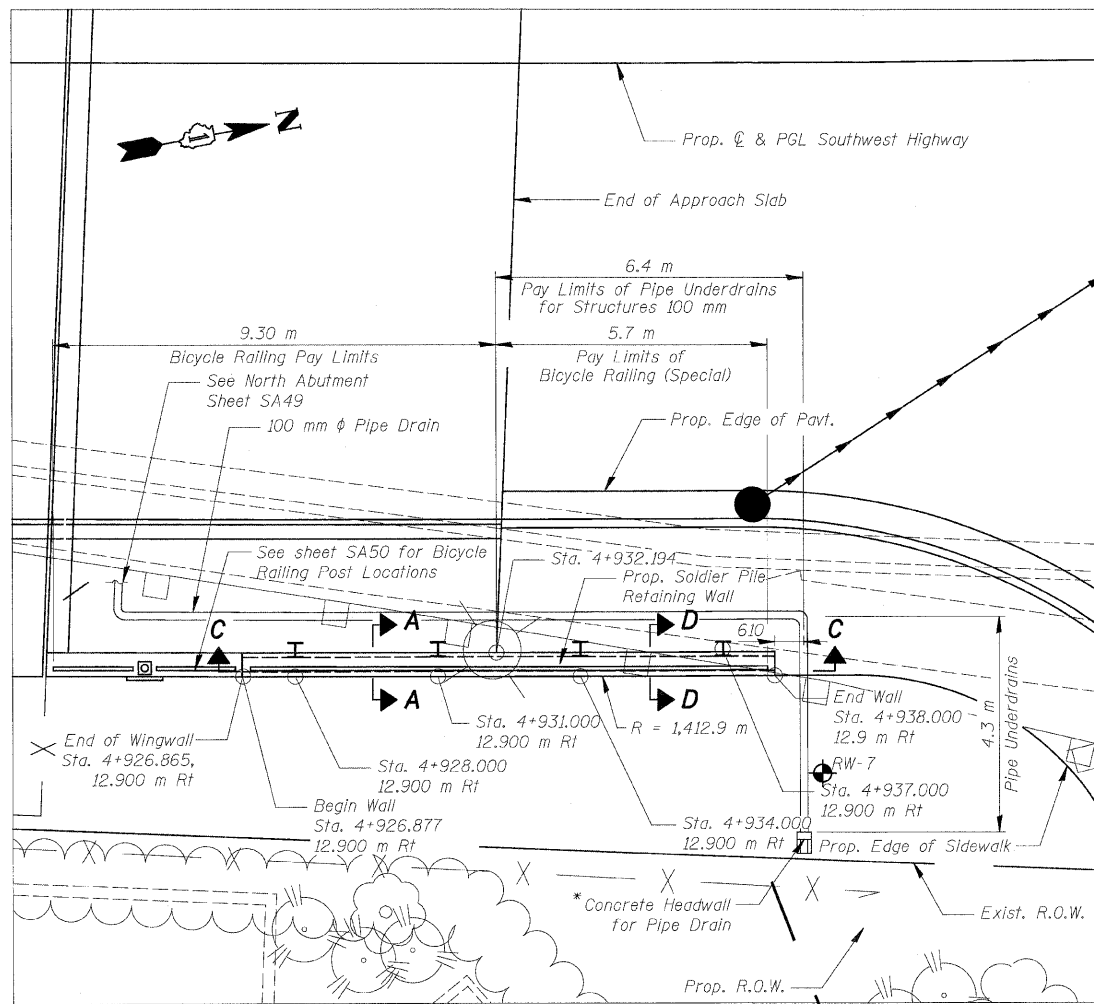


Bench Mark:

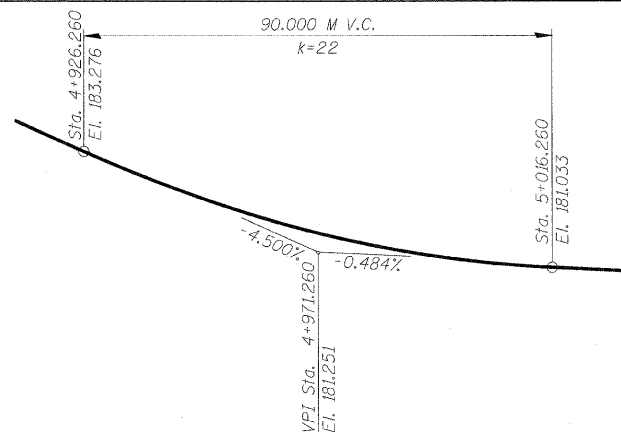
E. Flange Bolt of F.H. at S.W. corner Ridgeland & SW Highway - El. 181.825



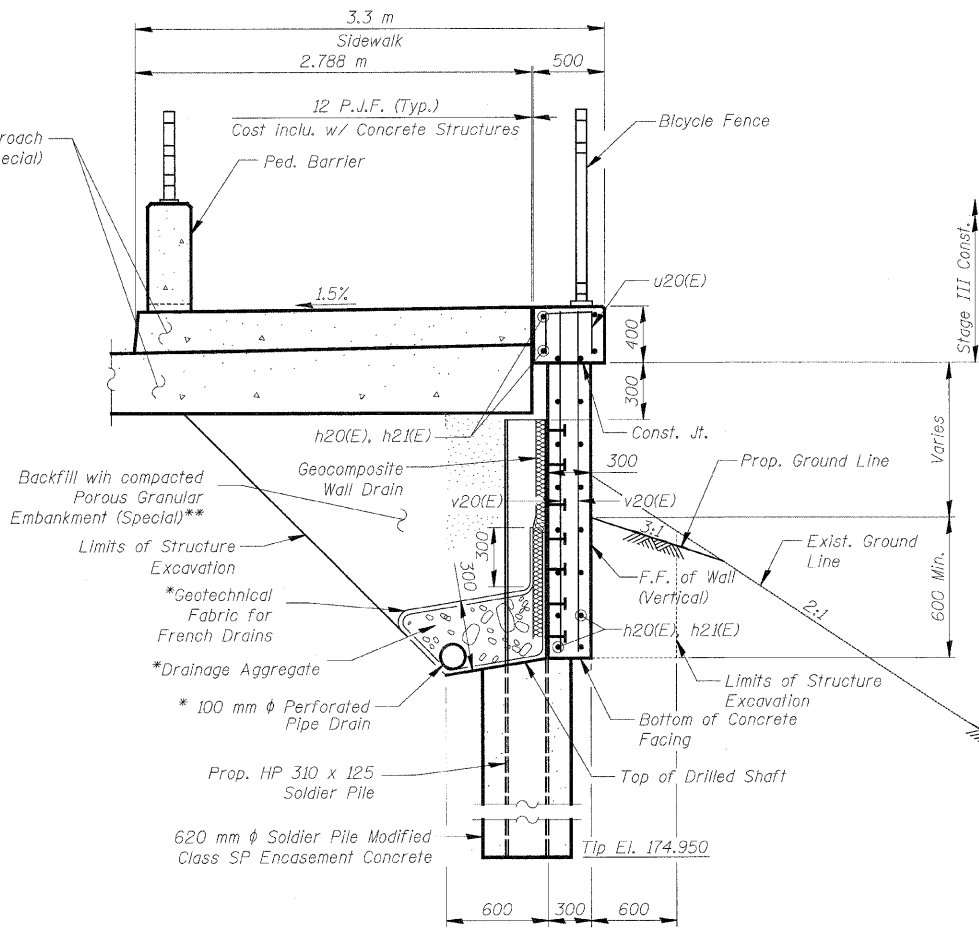
ELEVATION



PLAN



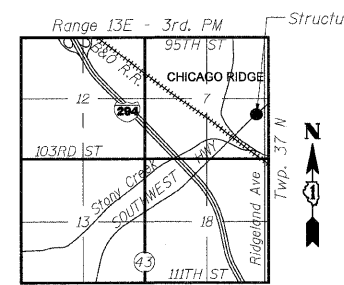
PROFILE GRADE SOUTHWEST HIGHWAY



TYPICAL SECTION

* Included in the cost of Pipe Underdrains for Structures, 100 mm
 **Backfill shall be compacted to the satisfaction of the Engineer.

All drainage system components shall extend to 600 mm from the end of wall, except an outlet pipe shall extend until intersecting with the side slopes. The pipe shall drain into concrete headwalls.



LOCATION SKETCH

PATRICK ENGINEERING, INC.
 PAUL M. LOPEZ, S.E.



Paul M. Lopez
 PAUL M. LOPEZ, P.E., S.E.
 NO. 081-005231
 EXP. DATE: 11/30/10
 DATE: 06/17/2009

SHEET SB1 of SB3

F.A.U. RTE.	SECTION	COUNTY	TOTAL SHEETS	SHEET NO.
3578	15V B-1-R-1	COOK	243	207
STA.		TO STA.		
FED. ROAD DIST. NO.		ILLINOIS FED. AID PROJECT		

CONTRACT NO. 62388

GENERAL NOTES:

DESIGN SPECIFICATION:

2002 AASHTO Standard Specifications for Highway Bridges.

LOADING:

Earth Dry Weight = 1,920 kg/m³
 Equivalent Lateral Fluid Pressure = 2.4 kPa
 Live Load Surcharge = 11.5 kPa

DESIGN STRESSES

EXISTING CONSTRUCTION

f'c = 24 MPa
 fy = 400 MPa (Reinf.)
 fy = 345 MPa (M270M Grade 345)

NEW CONSTRUCTION

f'c = 24 MPa
 fy = 400 MPa (Reinf.)
 fy = 345 MPa (M270M Grade 345)

INDEX OF SHEETS

- SB1 - Retaining Wall General Plan & Elevation
- SB2 - Retaining Wall Details
- SB3 - Soil Boring Log

NOTES:

- All dimensions are in millimeters (mm) except as noted.
- Stations and offsets are measured at front face of wall.
- Horizontal dimensions are measured along front face of wall.
- See SA32 for Bicycle Railing Quantity and Details

BILL OF MATERIAL

Item	Unit	Quantity
Stud Shear Connectors	Each	52
* Porous Granular Embankment (Special)	m ³	21
Structure Excavation	m ³	35
Concrete Structures	m ³	7.3
Reinforcement Bars, Epoxy Coated	kg	630
* Furnishing Soldier Piles (HP Section)	m	36.5
Geocomposite Wall Drain	Sq. m	13
* Pipe Underdrains for Structures 100 mm	m	10.7
* Drilling and Setting Soldier Piles in Soil	m ³	9.4
* Bicycle Railing (Special)	m	5.7

* See Special Provisions

REVISIONS	NAME	DATE

ILLINOIS DEPARTMENT OF TRANSPORTATION
RETAINING WALL GENERAL PLAN & ELEVATION
SOUTHWEST HIGHWAY OVER
B&O RAILROAD AND STONY CREEK
 FAU 3578 SECTION 15V B-1-R-1
 STRUCTURE NUMBER 016-2771
 COOK COUNTY STATION 4+716.497
 SCALE: NONE DRAWN BY: M. Tryon
 DATE: 6/17/09 CHECKED BY: A. Yargiooglu



H:\koeppner\rdwy_lisle\6/26/2009\AD\Drawings\STRUCT\Retaining wall\D.Ret Wall.dgn
 6/26/2009 8:39:34 AM
 H:\koeppner\rdwy_lisle\6/26/2009

Rev. 10.9.09