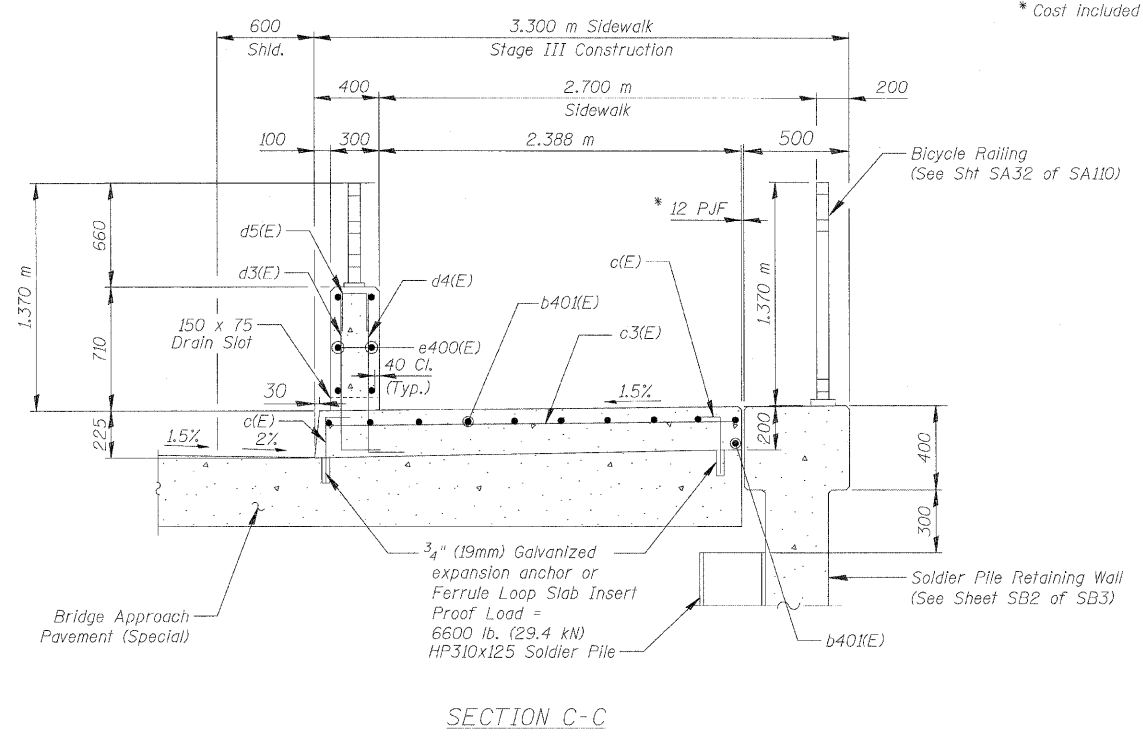
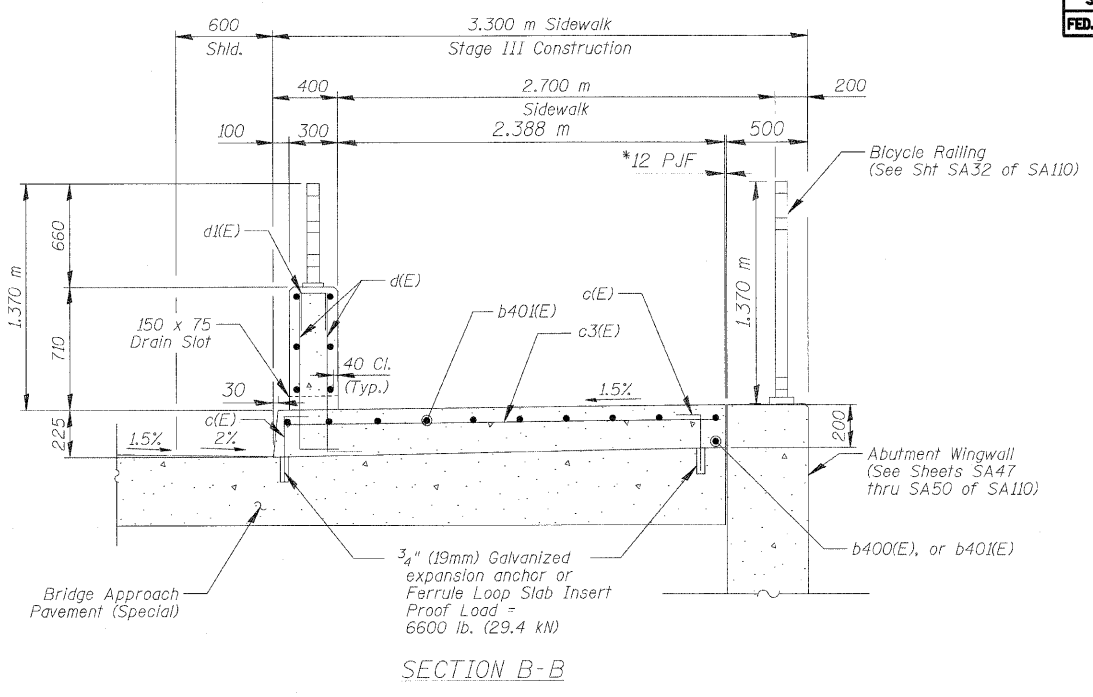
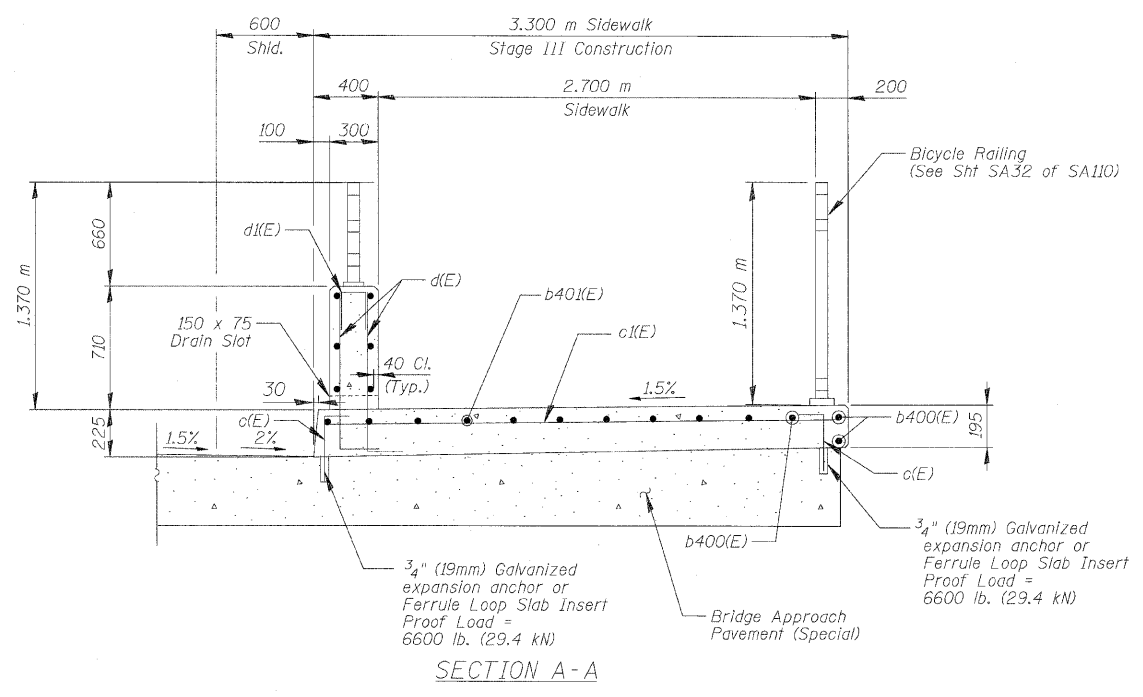
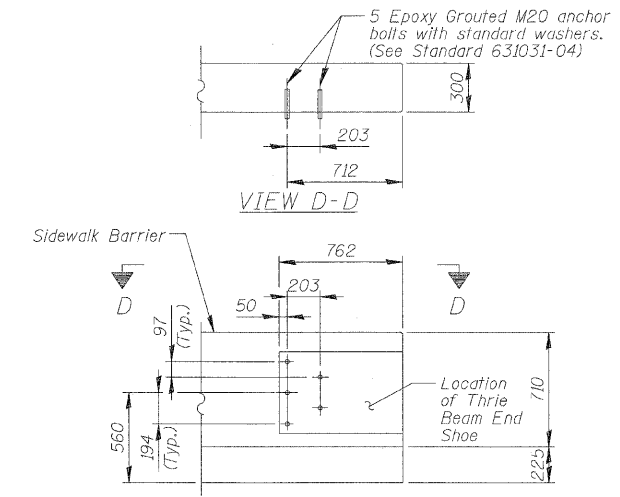


F.A.U. RTE.	SECTION	COUNTY	TOTAL SHEETS	SHEET NO.
3578	15V B-1-R-1	COOK	243	211
STA.		TO STA.		
FED. ROAD DIST. NO.		ILLINOIS FED. AID PROJECT		
CONTRACT NO. 62388				



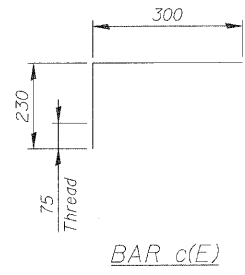
* Cost included in the Pay Item "Bridge Approach Pavement (Special)".



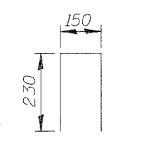
S. APPROACH SIDEWALK BARRIER DETAIL
(Looking South at I.F. of Sidewalk Barrier)

NOTES

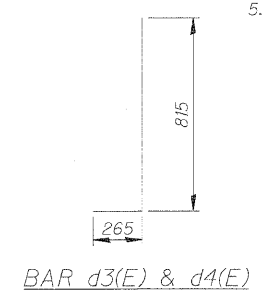
1. Reinforcement bars designated (E) shall be Epoxy Coated.
2. Bars indicated thus 20 x 3 - #15 etc. indicates 20 lines of bars with 3 lengths per line.
3. All dimensions are in millimeters (mm) except as noted.
4. For additional approach pavement details, see Roadway Plans.
5. In lieu of providing the d3(E) & d4(E) dowels bars as shown, the contractor, at his option and expense, can submit to the engineer for his review and approval an alternate detail to drill and grout the bars. No additional compensation will be allowed if the contractor elects to use the alternate detail.



BAR c(E)



BAR d5(E)



BAR d3(E) & d4(E)

REVISIONS		ILLINOIS DEPARTMENT OF TRANSPORTATION BRIDGE APPROACH PAVEMENT (SPECIAL) DETAILS SOUTHWEST HIGHWAY OVER B&O RAILROAD AND STONY CREEK FAU 3578 SECTION 15V B-1-R-1 STRUCTURE NUMBER 016-2771 COOK COUNTY STATION 4+716.497
NAME	DATE	
		SCALE: NONE DATE: 6/17/09 DRAWN BY: M. Tryon CHECKED BY: A. Yarglooglu

H:\koeppen\Roadway\Liste\ 6/26/2009 8:20:04 AM
 Q:\VDD01\9556_40\Drawings\STRUCT\00_Approach_slab_details.dgn
PATRICK ENGINEERING INC. LISLE, ILLINOIS