

F.A.P. RTE.	SECTION	COUNTY	TOTAL SHEETS	SHEET NO.
573	61 B-BR-1	KANE	37	1
FED. ROAD DIST. NO.	ILLINOIS	CONTRACT NO.	62817	

**STATE OF ILLINOIS
DEPARTMENT OF TRANSPORTATION
DIVISION OF HIGHWAYS**

PROPOSED HIGHWAY PLANS

**FAP ROUTE 573: IL 56
OVER BLACKBERRY CREEK**

**SECTION: 61 B-BR-1
BRIDGE DECK REPLACEMENT**

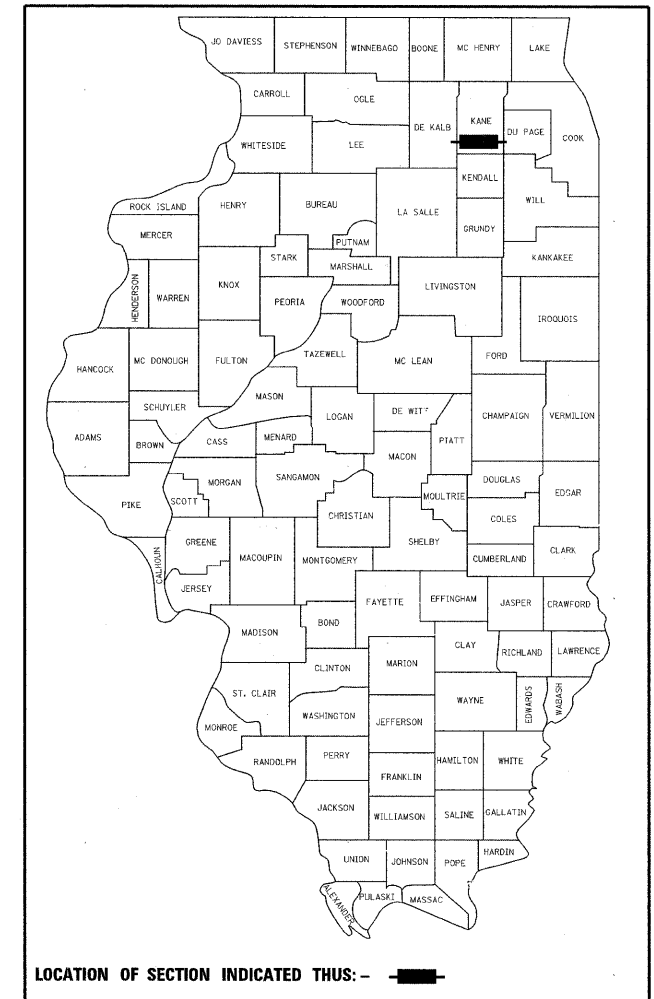
STRUCTURE NOS. 045-0026(E.B.) AND 045-0027(W.B.)

PROJECT: BHF-0573(099)

KANE COUNTY

C-91-318-04

D-91-318-04



FOR INDEX OF SHEETS, SEE SHEET NO. 2

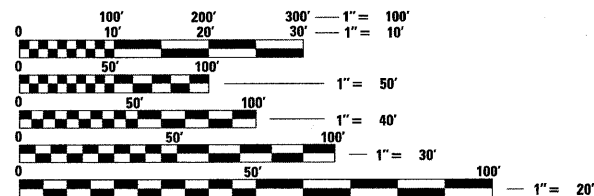
**IMPROVEMENT LOCATED IN
THE VILLAGE OF SUGAR GROVE**

TRAFFIC DATA

**2007 ADT = 19,800 VEHICLES PER DAY
SPEED LIMIT = 55 MPH**

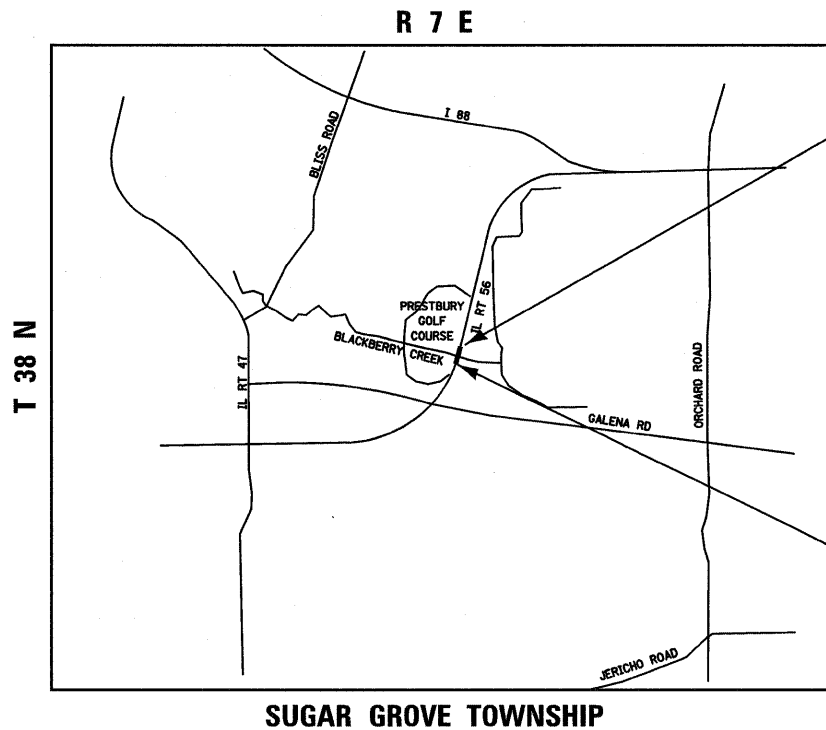
IL 56 OVER BLACKBERRY CREEK

**STRUCTURES NUMBER 045-0026 (EB) & 045-0027 (WB)
R.C. DECK ON SIMPLY SUPPORTED WIDE FLANGE BEAM
SPANS. DECK TO BE REMOVED AND REPLACED USING
STAGE CONSTRUCTION. WORK INCLUDES PIER AND
ABUTMENT REPAIRS.**



FULL SIZE PLANS HAVE BEEN PREPARED USING STANDARD ENGINEERING SCALES. REDUCED SIZED PLANS WILL NOT CONFORM TO STANDARD SCALES. IN MAKING MEASUREMENTS ON REDUCED PLANS, THE ABOVE SCALES MAY BE USED.

J.U.L.I.E.
JOINT UTILITY LOCATION INFORMATION FOR EXCAVATION
1-800-892-0123
OR 811



**IMPROVEMENT ENDS
STA. 204 + 20**

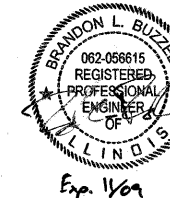
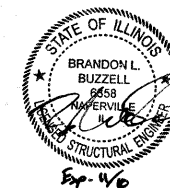


**IMPROVEMENT BEGINS
STA. 199 + 90**

GROSS & NET LENGTH OF PROJECT = 430 FT = 0.08 MILE

**PROJECT ENGINEER MICHELLE AQUINO (847) 705-4606
PROJECT MANAGER LONG TRAN (847) 705-4232**

CONTRACT NO. 62817



rjngroup 048453
Excellence through Ownership
200 West Front Street
Wheaton, IL 60187
License # 184-000813

STATE OF ILLINOIS
DEPARTMENT OF TRANSPORTATION
DIVISION OF HIGHWAYS

SUBMITTED MAY 12, 20 09

Diana M. O'Keefe DEPUTY DIRECTOR OF HIGHWAYS, REGION ENGINEER
October 2, 20 09

Charles J. Ingersoll ENGINEER OF DESIGN AND ENVIRONMENT
October 2, 20 09

Christine M. Reed DIRECTOR OF HIGHWAYS, CHIEF ENGINEER

**PRINTED BY THE AUTHORITY
OF THE STATE OF ILLINOIS**