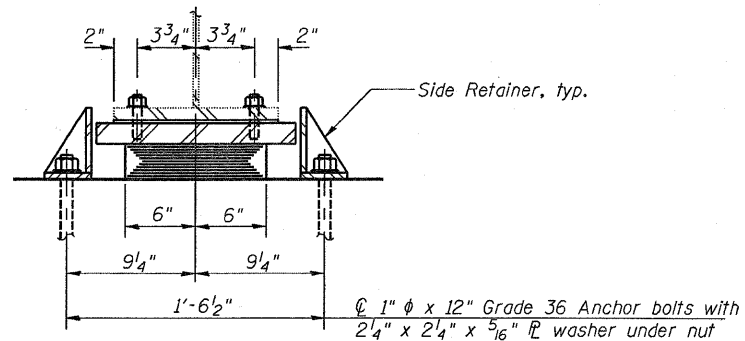
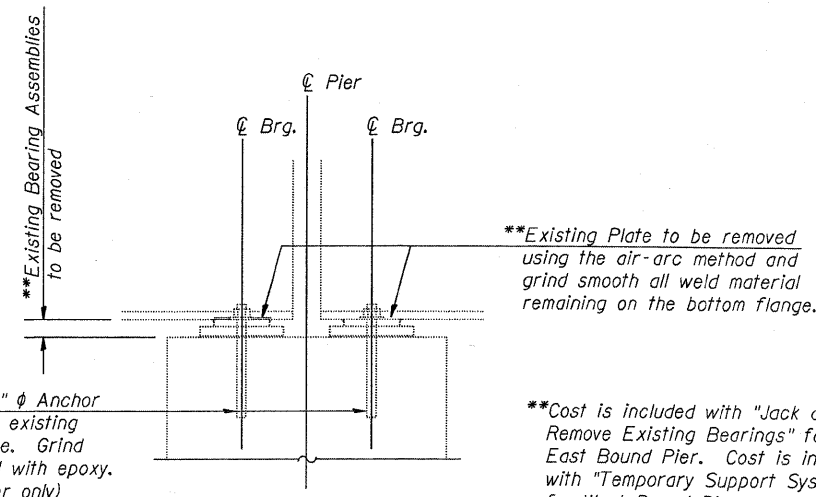


ELEVATION AT PIER (WEST BOUND STRUCTURE)

TYPE I ELASTOMERIC EXP. BRG.



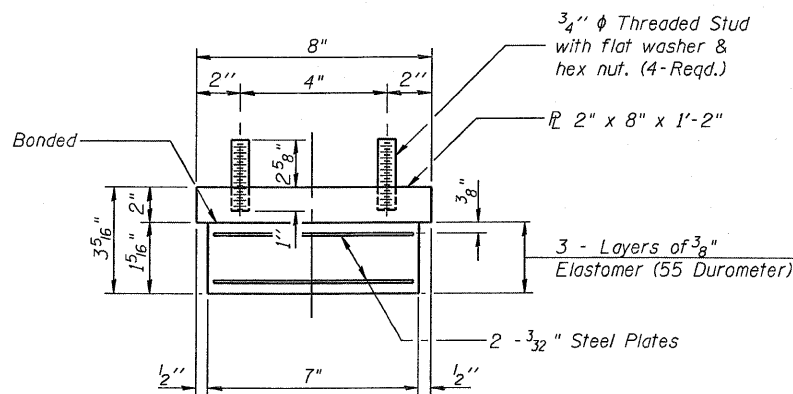
SECTION A-A



JACK AND REMOVE EXISTING BEARINGS AT PIERS

JACKING PROCEDURES

1. Prior to commencing any work at the bearings, the Contractor shall submit plans for Jacking for approval by the Engineer.
2. Jacking and Removing Existing Bearings shall be done after deck removal is completed and before the new deck is placed.
3. Jacking shall be limited so that the maximum lift transversely between adjacent beams is 1/4". See Special Provision for "Jack and Remove Existing Bearings".
4. The maximum dead load reaction with the deck removed (per bearing) is 4 kips. Minimum Jack capacity is 8 kips.
5. The jacks will be lowered after the top of pier is reconstructed (west bound structure only) and the bearings are installed in place and before the new deck is placed.



BEARING ASSEMBLY

Note: Shim plates shall not be placed under Bearing Assembly.

NOTES

Anchor bolts shall be ASTM F1554 all-thread (or an Engineer-approved alternate material) of the grade(s) and diameter(s) specified. ASTM A307 Grade C anchor bolts may be used in lieu of ASTM F1554 Grade 36 (Fy=36ksi). The corresponding specified grade of AASHTO M314 anchor bolts may be used in lieu of ASTM F1554.

Anchor bolts for side retainers may be cast in place or installed in holes drilled before or after members are in place.

Drilled and set anchor bolts shall be installed according to Article 521.06 of the Standard Specifications.

Side retainers and other steel members required for the bearing assembly shall be included in the cost of Elastomeric Bearing Assembly, Type I.

7/8" diameter holes in bottom flange for 3/4" studs will be drilled in the field. Cost included with Elastomeric Bearing Assembly, Type I.

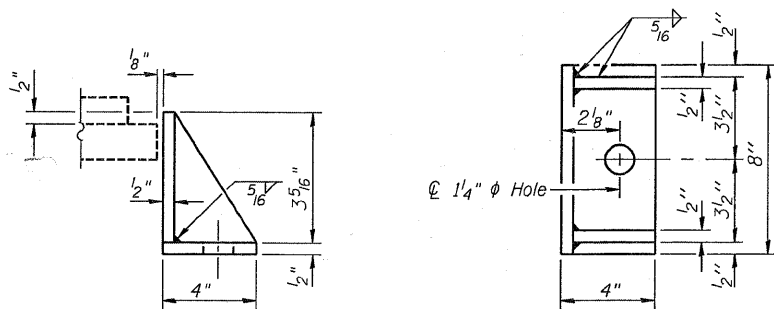
Prior to ordering any material, the Contractor shall verify in the field all bearing height and shim thickness dimensions.

Jacking and Removal of Existing Bearings for the West Bound Bridge shall be included with the Cost for Temporary Support System.

BILL OF MATERIAL

Item	Unit	Total
Elastomeric Bearing Assembly, Type I	Each	12
Anchor Bolt, 1"	Each	24
* Temporary Support System	L Sum	1

*Includes both sides of Westbound Pier.



SIDE RETAINER

Equivalent rolled angle with stiffeners will be allowed in lieu of welded plates.

<p>Excellence through Ownership</p> <p>200 West Front Street Wheaton, IL 60187</p> <p>DESIGNED: WJV CHECKED: BLB DATE: 04/02/09</p>		<p>BEARING DETAILS - WEST BOUND PIER IL RTE. 56 OVER BLACKBERRY CREEK STATION 202+10.00 STRUCTURE NO. 045-0026 (E.B.) STRUCTURE NO. 045-0027 (W.B.)</p>			
SHEET NO. 12	F.A.P. RTE. 573	SECTION 61B-BR-1	COUNTY KANE	TOTAL SHEETS 37	SHEET NO. 24
17 SHEETS	FED. ROAD DIST. NO. 7		ILLINOIS FED. AID PROJECT		
		CONTRACT NO. 62817			