



# Illinois Department of Transportation

2300 South Dirksen Parkway / Springfield, Illinois / 62764

January 6, 2010

SUBJECT: FAP Route 326  
Project ACNHF-HPP-1099 (002)  
Section (105X & 106) WRS-2  
McHenry & Kane Counties  
Contract No. 62882  
Item No. 128, January 15, 2010 Letting  
Addendum A

## NOTICE TO PROSPECTIVE BIDDERS:

Attached is an addendum to the plans or proposal. This addendum involves revised and/or added material.

1. Replaced the Schedule of Prices.
2. Revised the Table of Contents to the Special Provisions.
3. Revised pages 2, 3, 40 and 224 - 234 to the Special Provisions.
4. Added pages 246 - 267 to the Special Provisions.
5. Revised sheets 3-12, 12A, 15-17, 22-30, 33, 34, 39, 47, 49, 51, 53, 54, 60, 62, 63, 68-71, 76, 77, 80-84, 87-89, 93-95, 99, 100, 104, 105, 110, 111, 118-120, 126, 131, 146-148, 151, 152, 157, 165-172, 187, 203, 244-246, 249, 250, 253-256, 258, 260-263, 265, 268, 273, 275, 277, 279-291, 293, 295, 310, 314, 330-332, 337, 340, 383-397, 425, 426, 430, 460, 461 & 500-502 of the Plans.
6. Added sheet 280A to the Plans.

Prime contractors must utilize the enclosed material when preparing their bid and must include any Schedule of Prices changes in their bidding proposal.

Bidders using computer-generated bids are cautioned to reflect any and all Schedule of Prices changes, if involved, into their computer programs.

Very truly yours,

Charles Ingersoll, Chief  
Bureau of Design and Environment

A handwritten signature in black ink, appearing to read 'Ted B. Walschleger', followed by the initials 'P.E.' to the right.

By: Ted B. Walschleger, P. E.  
Engineer of Project Management

cc: Diane O'Keefe, Region 1, District 1; Mike Renner; R. E. Anderson;  
Estimates

TBW:MS:jc

ILLINOIS DEPARTMENT OF TRANSPORTATION  
 SCHEDULE OF PRICES  
 CONTRACT  
 NUMBER -

62882

State Job # - C-91-071-05  
 PPS NBR - 1-75135-0600  
 County Name - KANE- MCHENRY-  
 Code - 89 - 111 -  
 District - 1 - 1 -  
 Section Number - (105X & 106) WRS-2

Project Number  
 ACNHF-HPP-1099/002/

Route  
 FAP 326

\* REVISED : DECEMBER 31, 2009

Item Number	Pay Item Description	Unit of Measure	Quantity	x	Unit Price	=	Total Price
A2000120	T-ACERX FREM AB 2-1/2	EACH	14.000				
A2005016	T-GYMNOCLA DIO 2	EACH	9.000				
A2006716	T-QUERCUS MACR 2	EACH	12.000				
A2007720	T-TAXODI DIS SB 2-1/2	EACH	9.000				
B2000766	T-AMEL X GF AB SF 6'	EACH	10.000				
B2001666	T-CRATAE CRU-I SF 6'	EACH	8.000				
B2004516	T-MALUS R J TF 2	EACH	10.000				
B2006316	T-SYRG RT IS TF 2	EACH	9.000				
C2C01536	S-CORNUS RACEMOSA 3'C	EACH	100.000				
C2C09624	S-SAMBUCUS CANAD 2'C	EACH	40.000				
D2002772	E-PINUS NIGRA 6'	EACH	9.000				
K1004485	PERENNIAL PLANTS W-TY	UNIT	9.820				
XX002007	AGG BICYCLE PATH	SQ YD	1,689.000				
XX002264	ELCBL C RAILRD 14 3C	FOOT	210.000				
XX005463	ADJ FIRE HYD W VALVE	EACH	8.000				

ILLINOIS DEPARTMENT OF TRANSPORTATION  
 SCHEDULE OF PRICES  
 CONTRACT  
 NUMBER - 62882

State Job # - C-91-071-05  
 PPS NBR - 1-75135-0600  
 County Name - KANE- MCHENRY-  
 Code - 89 - 111 -  
 District - 1 - 1 -  
 Section Number - (105X & 106) WRS-2

Project Number  
 ACNHF-HPP-1099/002/

Route  
 FAP 326

\* REVISED : DECEMBER 31, 2009

Item Number	Pay Item Description	Unit of Measure	Quantity	x	Unit Price	=	Total Price
* XX005656	INLET FILTER CLEANING	EACH	902.000				
XX006247	SAN SEW REMOVAL	FOOT	3,171.000				
XX006253	SAN MH 4 DIA	EACH	25.000				
* XX006648	TEMP STORM SEWER 12	FOOT	4.000				
XX006931	SS WM REQ S53 R34	FOOT	113.000				
XX172700	MAN TA 8 DIA T1F CL	EACH	3.000				
X0300020	WATER SERV CONNECTION	EACH	17.000				
* X0301766	DRILL-GROUT #6 T-BAR	EACH	4.000				
X0320591	SAN MAN REMOVED	EACH	5.000				
* X0320801	DRAINAGE STR T1 SPL	EACH	15.000				
* X0320815	SLEEPER SLAB	FOOT	473.000				
X0321100	GEOTEX RETAIN WALL	SQ FT	161.000				
* X0321193	TEMP CATCH BASINS	EACH	2.000				
X0321720	WATER MAIN REMOVAL	FOOT	7,196.000				
* X0322033	STORM SEW WM REQ 12	FOOT	1,044.000				

ILLINOIS DEPARTMENT OF TRANSPORTATION  
 SCHEDULE OF PRICES  
 CONTRACT  
 NUMBER - 62882

State Job # - C-91-071-05  
 PPS NBR - 1-75135-0600  
 County Name - KANE- MCHENRY-  
 Code - 89 - 111 -  
 District - 1 - 1 -  
 Section Number - (105X & 106) WRS-2

Project Number  
 ACNHF-HPP-1099/002/

Route  
 FAP 326

\* REVISED : DECEMBER 31, 2009

Item Number	Pay Item Description	Unit of Measure	Quantity	x	Unit Price	=	Total Price
X0322035	STORM SEW WM REQ 18	FOOT	309.000				
X0322125	STORM SEW WM REQ 24	FOOT	175.000				
X0322126	STORM SEW WM REQ 27	FOOT	153.000				
X0322127	STORM SEW WM REQ 30	FOOT	224.000				
X0322256	TEMP INFO SIGNING	SQ FT	1,046.000				
* X0322925	ELCBL C TRACER 14 1C	FOOT	12,047.000				
* X0323670	PREFORM DETECT LOOP	FOOT	4,986.000				
X0323797	PT NEW TRAF SIG POST	EACH	18.000				
X0323817	SED CONT SILT CURTAIN	EACH	1.000				
* X0323988	TEMP SOIL RETEN SYSTM	SQ FT	1,607.000				
X0324232	PT NEW MAP < 40	EACH	4.000				
X0325141	PT NEW MAP = > 40	EACH	12.000				
* X0325542	HES PCC PVT 10 JOINTD	SQ YD	2,736.000				
X0325546	WET PAVMT TAPE T3 8	FOOT	355.000				
* X0325547	WET PAVMT TAPE T3 24	FOOT	2,598.000				

ILLINOIS DEPARTMENT OF TRANSPORTATION  
 SCHEDULE OF PRICES  
 CONTRACT  
 NUMBER - 62882

State Job # - C-91-071-05  
 PPS NBR - 1-75135-0600  
 County Name - KANE- MCHENRY-  
 Code - 89 - 111 -  
 District - 1 - 1 -  
 Section Number - (105X & 106) WRS-2

Project Number  
 ACNHF-HPP-1099/002/

Route  
 FAP 326

\* REVISED : DECEMBER 31, 2009

Item Number	Pay Item Description	Unit of Measure	Quantity	x	Unit Price	=	Total Price
X0325705	RE-OPTIMIZE SIG SYS 2	EACH	1.000				
X0325737	TEMP TR SIGNAL TIMING	EACH	4.000				
X0326722	ESCAPE AREA CONC MED	SQ FT	3,422.000				
X0326723	WET REF PREFRM PPM LS	SQ FT	473.000				
* X0326724	WET REF PREFRM PPM L4	FOOT	8,479.000				
* X0326725	WET REF PREFRM PPM L6	FOOT	3,820.000				
* X0326726	WET REF PRFRM PPM L12	FOOT	668.000				
X0326727	WET REF PRFRM PPM L24	FOOT	121.000				
* X0326728	WET PAVT TAPE T3 L&S	SQ FT	4,196.000				
* X0326729	WET PAVT TAPE T3 4	FOOT	191,486.000				
* X0326730	WET PAVT TAPE T3 6	FOOT	16,925.000				
* X0326731	WET PAVT TAPE T3 12	FOOT	2,481.000				
* X0326732	HMA SUR REM RCDPVT .1	SQ FT	6,120.000				
X0326733	SAN SWR PVC SDR 26 6	FOOT	891.000				
X0326734	SAN SWR PVC SDR 26 8	FOOT	1,916.000				

ILLINOIS DEPARTMENT OF TRANSPORTATION  
 SCHEDULE OF PRICES  
 CONTRACT  
 NUMBER -

62882

State Job # - C-91-071-05  
 PPS NBR - 1-75135-0600  
 County Name - KANE- MCHENRY-  
 Code - 89 - 111 -  
 District - 1 - 1 -  
 Section Number - (105X & 106) WRS-2

Project Number  
 ACNHF-HPP-1099/002/

Route  
 FAP 326

\* REVISED : DECEMBER 31, 2009

Item Number	Pay Item Description	Unit of Measure	Quantity	x	Unit Price	=	Total Price
X0326735	SAN SWR PVC SDR 26 10	FOOT	270.000				
X0326736	SAN SWR PVC SDR 26 12	FOOT	480.000				
X0326737	SAN SWRPVC SDR 26WMQ8	FOOT	204.000				
X0326738	CLEAN SANITRY MANHOLE	EACH	2.000				
X0326739	CLEAN EX SANITRY SEWR	FOOT	101.000				
X0326740	LINE MANHOLE	FOOT	34.000				
X0326741	REPL FRAMES ADJSTMNTS	EACH	2.000				
X0326744	PLUG PIPE PENETRATION	EACH	1.000				
X0326745	SAN SWR LIFT STATION	L SUM	1.000				
X0326746	SAN SWR LIFT STA ABND	L SUM	1.000				
* X0326747	SANITARY FORCE MAIN 6	FOOT	945.000				
X0326748	CLEAN-OUT MANHOLE	EACH	1.000				
X0326750	STL CAS PIP BOR JK 18	FOOT	70.000				
X0326751	VALVE VAULT 4 VALVE	EACH	1.000				
X0326752	VALV VLT 4DIA 6 VALVE	EACH	9.000				

ILLINOIS DEPARTMENT OF TRANSPORTATION  
 SCHEDULE OF PRICES  
 CONTRACT  
 NUMBER -

62882

State Job # - C-91-071-05  
 PPS NBR - 1-75135-0600  
 County Name - KANE- MCHENRY-  
 Code - 89 - 111 -  
 District - 1 - 1 -  
 Section Number - (105X & 106) WRS-2

Project Number  
 ACNHF-HPP-1099/002/

Route  
 FAP 326

\* REVISED : DECEMBER 31, 2009

Item Number	Pay Item Description	Unit of Measure	Quantity	x	Unit Price	=	Total Price
X0326753	VALV VLT 4DIA 8 VALVE	EACH	7.000				
X0326754	VALV VLT 5DIA 10 VALV	EACH	7.000				
X0326755	VALV VLT 5DIA 12 VALV	EACH	13.000				
X0326756	LT POLE COMP IN PL T1	EACH	78.000				
X0326757	LT POLE COMP IN PL T2	EACH	8.000				
X0326758	UD4#62#81#8N1#6G1.5PT	FOOT	14,940.000				
* X0712400	TEMP PAVEMENT	SQ YD	18,485.000				
X4021000	TEMP ACCESS- PRIV ENT	EACH	20.000				
X4022000	TEMP ACCESS- COM ENT	EACH	60.000				
* X4420500	TEMP PAVT PATCH	SQ YD	516.000				
X4420540	CL B PATCH T4 8 1/4	SQ YD	27.000				
X6063600	COMB CC&G TM4.24	FOOT	300.000				
X7011005	TR CONT-PROT TEMP DET	L SUM	1.000				
X7050165	TEMP TR BAR TM T1 SPL	EACH	1.000				
X8050015	SERV INSTALL POLE MT	EACH	4.000				

ILLINOIS DEPARTMENT OF TRANSPORTATION  
 SCHEDULE OF PRICES  
 CONTRACT  
 NUMBER -

62882

State Job # - C-91-071-05  
 PPS NBR - 1-75135-0600  
 County Name - KANE- MCHENRY-  
 Code - 89 - 111 -  
 District - 1 - 1 -  
 Section Number - (105X & 106) WRS-2

Project Number  
 ACNHF-HPP-1099/002/

Route  
 FAP 326

\* REVISED : DECEMBER 31, 2009

Item Number	Pay Item Description	Unit of Measure	Quantity	x	Unit Price	=	Total Price
X8210405	LUMINAIRE SHIELD	EACH	12.000				
X8620020	UNINTER POWER SUPPLY	EACH	4.000				
* X8710020	FOCC62.5/125 MM12SM12	FOOT	12,125.000				
* X8730027	ELCBL C GROUND 6 1C	FOOT	4,389.000				
* X8730250	ELCBL C 20 3C TW SH	FOOT	3,617.000				
X8900040	MOD TMP TR SIG INSTAL	EACH	1.000				
* Z0001050	AGG SUBGRADE 12	SQ YD	153,194.000				
Z0001100	AIR RELEASE VALVE	EACH	1.000				
Z0007601	BLDG REMOV NO 1	L SUM	1.000				
Z0007602	BLDG REMOV NO 2	L SUM	1.000				
Z0007603	BLDG REMOV NO 3	L SUM	1.000				
Z0007604	BLDG REMOV NO 4	L SUM	1.000				
Z0007605	BLDG REMOV NO 5	L SUM	1.000				
Z0007606	BLDG REMOV NO 6	L SUM	1.000				
Z0007607	BLDG REMOV NO 7	L SUM	1.000				



ILLINOIS DEPARTMENT OF TRANSPORTATION  
 SCHEDULE OF PRICES  
 CONTRACT  
 NUMBER -

62882

State Job # - C-91-071-05  
 PPS NBR - 1-75135-0600  
 County Name - KANE- MCHENRY-  
 Code - 89 - 111 -  
 District - 1 - 1 -  
 Section Number - (105X & 106) WRS-2

Project Number  
 ACNHF-HPP-1099/002/

Route  
 FAP 326

\* REVISED : DECEMBER 31, 2009

Item Number	Pay Item Description	Unit of Measure	Quantity	x	Unit Price	=	Total Price
Z0013798	CONSTRUCTION LAYOUT	L SUM	1.000				
Z0017202	DOWEL BARS 1 1/2	EACH	65.000				
Z0022800	FENCE REMOVAL	FOOT	1,814.000				
Z0030255	IMP ATTN TEMP FRN TL2	EACH	10.000				
Z0030320	IMP ATTN REL FRD TL2	EACH	9.000				
Z0048665	RR PROT LIABILITY INS	L SUM	1.000				
Z0049801	R&D FRIABL ASB BLD 1	L SUM	1.000				
Z0049802	R&D FRIABL ASB BLD 2	L SUM	1.000				
Z0049803	R&D FRIABL ASB BLD 3	L SUM	1.000				
Z0049804	R&D FRIABL ASB BLD 4	L SUM	1.000				
Z0049805	R&D FRIABL ASB BLD 5	L SUM	1.000				
Z0049806	R&D FRIABL ASB BLD 6	L SUM	1.000				
Z0049807	R&D FRIABL ASB BLD 7	L SUM	1.000				
Z0049901	R&D NON-FR ASB BLD 1	L SUM	1.000				
Z0049902	R&D NON-FR ASB BLD 2	L SUM	1.000				

ILLINOIS DEPARTMENT OF TRANSPORTATION  
 SCHEDULE OF PRICES  
 CONTRACT  
 NUMBER -

62882

State Job # - C-91-071-05  
 PPS NBR - 1-75135-0600  
 County Name - KANE- MCHENRY-  
 Code - 89 - 111 -  
 District - 1 - 1 -  
 Section Number - (105X & 106) WRS-2

Project Number  
 ACNHF-HPP-1099/002/

Route  
 FAP 326

\* REVISED : DECEMBER 31, 2009

Item Number	Pay Item Description	Unit of Measure	Quantity	x	Unit Price	=	Total Price
Z0049903	R&D NON-FR ASB BLD 3	L SUM	1.000				
Z0049904	R&D NON-FR ASB BLD 4	L SUM	1.000				
Z0049905	R&D NON-FR ASB BLD 5	L SUM	1.000				
Z0049906	R&D NON-FR ASB BLD 6	L SUM	1.000				
Z0049907	R&D NON-FR ASB BLD 7	L SUM	1.000				
Z0050900	REM CONC FDN	EACH	6.000				
Z0067000	STEEL CASINGS 6	FOOT	42.000				
Z0067100	STEEL CASINGS 8	FOOT	182.000				
Z0067300	STEEL CASINGS 12	FOOT	309.000				
Z0067450	STEEL CASINGS 15	FOOT	67.000				
* Z0067600	STEEL CASINGS 18	FOOT	467.000				
Z0068200	STEEL CASINGS 30	FOOT	54.000				
Z0075310	TIE BARS 3/4	EACH	4.000				
Z0075505	TIMBER RETAIN WALL RM	FOOT	129.000				
Z0076600	TRAINEES	HOUR	2,000.000		0.800		1,600.000

ILLINOIS DEPARTMENT OF TRANSPORTATION  
 SCHEDULE OF PRICES  
 CONTRACT  
 NUMBER - 62882

State Job # - C-91-071-05  
 PPS NBR - 1-75135-0600  
 County Name - KANE- MCHENRY-  
 Code - 89 - 111 -  
 District - 1 - 1 -  
 Section Number - (105X & 106) WRS-2

Project Number  
 ACNHF-HPP-1099/002/

Route  
 FAP 326

\* REVISED : DECEMBER 31, 2009

Item Number	Pay Item Description	Unit of Measure	Quantity	x	Unit Price	=	Total Price
20100110	TREE REMOV 6-15	UNIT	525.000				
20100210	TREE REMOV OVER 15	UNIT	546.000				
20100500	TREE REMOV ACRES	ACRE	0.440				
20101000	TEMPORARY FENCE	FOOT	4,463.000				
20101350	TREE PRUN OVER 10	EACH	3.000				
* 20200100	EARTH EXCAVATION	CU YD	64,677.000				
* 20201200	REM & DISP UNS MATL	CU YD	8,680.000				
20600200	GRAN EMBANK SPEC	CU YD	389.000				
20700400	POROUS GRAN EMB SPEC	CU YD	122.000				
* 20700420	POROUS GRAN EMB SUBGR	CU YD	8,680.000				
* 20800150	TRENCH BACKFILL	CU YD	52,890.000				
* 21001000	GEOTECH FAB F/GR STAB	SQ YD	13,790.000				
* 21101615	TOPSOIL F & P 4	SQ YD	82,849.000				
21301072	EXPLOR TRENCH 72	FOOT	400.000				
* 25000210	SEEDING CL 2A	ACRE	7.340				

ILLINOIS DEPARTMENT OF TRANSPORTATION  
 SCHEDULE OF PRICES  
 CONTRACT  
 NUMBER - 62882

State Job # - C-91-071-05  
 PPS NBR - 1-75135-0600  
 County Name - KANE- MCHENRY-  
 Code - 89 - 111 -  
 District - 1 - 1 -  
 Section Number - (105X & 106) WRS-2

Project Number  
 ACNHF-HPP-1099/002/

Route  
 FAP 326

\* REVISED : DECEMBER 31, 2009

Item Number	Pay Item Description	Unit of Measure	Quantity	x	Unit Price	=	Total Price
25000300	SEEDING CL 3	ACRE	0.430				
* 25000310	SEEDING CL 4	ACRE	2.640				
* 25000400	NITROGEN FERT NUTR	POUND	1,338.000				
* 25000500	PHOSPHORUS FERT NUTR	POUND	1,338.000				
* 25000600	POTASSIUM FERT NUTR	POUND	1,338.000				
* 25100630	EROSION CONTR BLANKET	SQ YD	48,292.000				
25100900	TURF REINF MAT	SQ YD	2,120.000				
* 25200110	SODDING SALT TOLERANT	SQ YD	32,437.000				
25200200	SUPPLE WATERING	UNIT	196.000				
* 28000250	TEMP EROS CONTR SEED	POUND	2,148.000				
* 28000305	TEMP DITCH CHECKS	FOOT	140.000				
* 28000400	PERIMETER EROS BAR	FOOT	35,931.000				
* 28000510	INLET FILTERS	EACH	451.000				
* 28100105	STONE RIPRAP CL A3	SQ YD	103.000				
28100107	STONE RIPRAP CL A4	SQ YD	325.000				

ILLINOIS DEPARTMENT OF TRANSPORTATION  
 SCHEDULE OF PRICES  
 CONTRACT  
 NUMBER - 62882

State Job # - C-91-071-05  
 PPS NBR - 1-75135-0600  
 County Name - KANE- MCHENRY-  
 Code - 89 - 111 -  
 District - 1 - 1 -  
 Section Number - (105X & 106) WRS-2

Project Number  
 ACNHF-HPP-1099/002/

Route  
 FAP 326

\* REVISED : DECEMBER 31, 2009

Item Number	Pay Item Description	Unit of Measure	Quantity	x	Unit Price	=	Total Price
28100109	STONE RIPRAP CL A5	SQ YD	60.000				
* 28200200	FILTER FABRIC	SQ YD	488.000				
35300305	PCC BSE CSE 8 1/4	SQ YD	757.000				
* 35501308	HMA BASE CSE 6	SQ YD	1,303.000				
* 35501316	HMA BASE CSE 8	SQ YD	8,025.000				
* 40600200	BIT MATLS PR CT	TON	29.000				
40600895	CONSTRUC TEST STRIP	EACH	10.000				
40601005	HMA REPL OVER PATCH	TON	6.000				
40603085	HMA BC IL-19.0 N70	TON	63.000				
40603240	P HMA BC IL19.0 N90	TON	95.000				
* 40603310	HMA SC "C" N50	TON	1,044.000				
40603340	HMA SC "D" N70	TON	57.000				
40603595	P HMA SC "F" N90	TON	568.000				
40701871	HMA PAVT FD 9 1/2	SQ YD	7,341.000				
40701921	HMA PAVT FD 12	SQ YD	6,096.000				

ILLINOIS DEPARTMENT OF TRANSPORTATION  
 SCHEDULE OF PRICES  
 CONTRACT  
 NUMBER - 62882

State Job # - C-91-071-05  
 PPS NBR - 1-75135-0600  
 County Name - KANE- MCHENRY-  
 Code - 89 - 111 -  
 District - 1 - 1 -  
 Section Number - (105X & 106) WRS-2

Project Number  
 ACNHF-HPP-1099/002/

Route  
 FAP 326

\* REVISED : DECEMBER 31, 2009

Item Number	Pay Item Description	Unit of Measure	Quantity	x	Unit Price	=	Total Price
* 42000500	PCC PVT 10	SQ YD	642.000				
* 42000501	PCC PVT 10 JOINTED	SQ YD	112,401.000				
* 42001100	HES PCC PVT 10	SQ YD	46.000				
42001200	PAVEMENT FABRIC	SQ YD	688.000				
* 42001300	PROTECTIVE COAT	SQ YD	153,922.000				
42300200	PCC DRIVEWAY PAVT 6	SQ YD	288.000				
* 42400200	PC CONC SIDEWALK 5	SQ FT	141,997.000				
* 42400800	DETECTABLE WARNINGS	SQ FT	288.000				
* 44000100	PAVEMENT REM	SQ YD	101,997.000				
* 44000155	HMA SURF REM 1 1/2	SQ YD	601.000				
44000156	HMA SURF REM 1 3/4	SQ YD	5,038.000				
44000157	HMA SURF REM 2	SQ YD	368.000				
* 44000200	DRIVE PAVEMENT REM	SQ YD	19,173.000				
44000300	CURB REM	FOOT	2,287.000				
* 44000500	COMB CURB GUTTER REM	FOOT	23,878.000				

ILLINOIS DEPARTMENT OF TRANSPORTATION  
 SCHEDULE OF PRICES  
 CONTRACT  
 NUMBER - 62882

State Job # - C-91-071-05  
 PPS NBR - 1-75135-0600  
 County Name - KANE- MCHENRY-  
 Code - 89 - 111 -  
 District - 1 - 1 -  
 Section Number - (105X & 106) WRS-2

Project Number  
 ACNHF-HPP-1099/002/

Route  
 FAP 326

\* REVISED : DECEMBER 31, 2009

Item Number	Pay Item Description	Unit of Measure	Quantity	x	Unit Price	=	Total Price
44000600	SIDEWALK REM	SQ FT	21,444.000				
44002216	HMA RM OV PATCH 4	SQ YD	27.000				
* 44002805	ISLAND REMOVAL	SQ FT	3,865.000				
44003100	MEDIAN REMOVAL	SQ FT	4,767.000				
44004250	PAVED SHLD REMOVAL	SQ YD	4,002.000				
44213200	SAW CUTS	FOOT	94.000				
* 48101500	AGGREGATE SHLDS B 6	SQ YD	217.000				
* 48203021	HMA SHOULDERS 6	SQ YD	784.000				
* 48203029	HMA SHOULDERS 8	SQ YD	1,630.000				
50100100	REM EXIST STRUCT	EACH	1.000				
50105220	PIPE CULVERT REMOV	FOOT	1,834.000				
50200100	STRUCTURE EXCAVATION	CU YD	937.000				
50200450	REM/DISP UNS MATL-STR	CU YD	651.000				
50300225	CONC STRUCT	CU YD	337.000				
50300300	PROTECTIVE COAT	SQ YD	106.000				

ILLINOIS DEPARTMENT OF TRANSPORTATION  
 SCHEDULE OF PRICES  
 CONTRACT  
 NUMBER - 62882

State Job # - C-91-071-05  
 PPS NBR - 1-75135-0600  
 County Name - KANE- MCHENRY-  
 Code - 89 - 111 -  
 District - 1 - 1 -  
 Section Number - (105X & 106) WRS-2

Project Number  
 ACNHF-HPP-1099/002/

Route  
 FAP 326

\* REVISED : DECEMBER 31, 2009

Item Number	Pay Item Description	Unit of Measure	Quantity	x	Unit Price	=	Total Price
50800105	REINFORCEMENT BARS	POUND	97,450.000				
50800205	REINF BARS, EPOXY CTD	POUND	24,590.000				
50800305	WELD WIRE FAB 6X6	SQ YD	304.000				
50800515	BAR SPLICERS	EACH	148.000				
51500100	NAME PLATES	EACH	1.000				
54003000	CONC BOX CUL	CU YD	415.000				
* 5421A012	P CUL CL A 1 12 TEMP	FOOT	188.000				
* 54213657	PRC FLAR END SEC 12	EACH	6.000				
54213660	PRC FLAR END SEC 15	EACH	1.000				
54213663	PRC FLAR END SEC 18	EACH	1.000				
54213669	PRC FLAR END SEC 24	EACH	4.000				
* DELETED							
* 54213699	PRC FLAR END SEC 54	EACH	1.000				
* 54213705	PRC FLAR END SEC 60	EACH	1.000				
54214509	PRC FL END S EQ RS 24	EACH	2.000				



ILLINOIS DEPARTMENT OF TRANSPORTATION  
 SCHEDULE OF PRICES  
 CONTRACT  
 NUMBER - 62882

State Job # - C-91-071-05  
 PPS NBR - 1-75135-0600  
 County Name - KANE- MCHENRY-  
 Code - 89 - 111 -  
 District - 1 - 1 -  
 Section Number - (105X & 106) WRS-2

Project Number  
 ACNHF-HPP-1099/002/

Route  
 FAP 326

\* REVISED : DECEMBER 31, 2009

Item Number	Pay Item Description	Unit of Measure	Quantity	x	Unit Price	=	Total Price
54214725	PRCF END S EL EQRS 30	EACH	1.000				
54247130	GRATING-C FL END S 24	EACH	4.000				
* DELETED							
* 54247200	GRATING-C FL END S 54	EACH	1.000				
* 54247210	GRATING-C FL END S 60	EACH	1.000				
54248130	GRT-C FL END S EQV 24	EACH	2.000				
54248150	GRT-C FL END S EQV 30	EACH	1.000				
* 550A0050	STORM SEW CL A 1 12	FOOT	3,314.000				
* 550A0070	STORM SEW CL A 1 15	FOOT	222.000				
550A0090	STORM SEW CL A 1 18	FOOT	703.000				
* 550A0120	STORM SEW CL A 1 24	FOOT	463.000				
* 550A0140	STORM SEW CL A 1 30	FOOT	221.000				
550A0200	STORM SEW CL A 1 54	FOOT	8.000				
* 550A0210	STORM SEW CL A 1 60	FOOT	455.000				
* 550A0340	STORM SEW CL A 2 12	FOOT	8,304.000				

ILLINOIS DEPARTMENT OF TRANSPORTATION  
 SCHEDULE OF PRICES  
 CONTRACT  
 NUMBER - 62882

State Job # - C-91-071-05  
 PPS NBR - 1-75135-0600  
 County Name - KANE- MCHENRY-  
 Code - 89 - 111 -  
 District - 1 - 1 -  
 Section Number - (105X & 106) WRS-2

Project Number  
 ACNHF-HPP-1099/002/

Route  
 FAP 326

\* REVISED : DECEMBER 31, 2009

Item Number	Pay Item Description	Unit of Measure	Quantity	x	Unit Price	=	Total Price
550A0360	STORM SEW CL A 2 15	FOOT	477.000				
550A0380	STORM SEW CL A 2 18	FOOT	241.000				
550A0400	STORM SEW CL A 2 21	FOOT	442.000				
* 550A0410	STORM SEW CL A 2 24	FOOT	856.000				
550A0420	STORM SEW CL A 2 27	FOOT	1,410.000				
* 550A0430	STORM SEW CL A 2 30	FOOT	1,379.000				
550A0450	STORM SEW CL A 2 36	FOOT	200.000				
* 550A0470	STORM SEW CL A 2 42	FOOT	213.000				
* DELETED							
550A0490	STORM SEW CL A 2 54	FOOT	768.000				
* 550A0500	STORM SEW CL A 2 60	FOOT	2,277.000				
* DELETED							
* 550A0770	STORM SEW CL A 3 42	FOOT	294.000				
550A0790	STORM SEW CL A 3 54	FOOT	218.000				
550A0800	STORM SEW CL A 3 60	FOOT	1,143.000				

ILLINOIS DEPARTMENT OF TRANSPORTATION  
 SCHEDULE OF PRICES  
 CONTRACT  
 NUMBER - 62882

State Job # - C-91-071-05  
 PPS NBR - 1-75135-0600  
 County Name - KANE- MCHENRY-  
 Code - 89 - 111 -  
 District - 1 - 1 -  
 Section Number - (105X & 106) WRS-2

Project Number  
 ACNHF-HPP-1099/002/

Route  
 FAP 326

\* REVISED : DECEMBER 31, 2009

Item Number	Pay Item Description	Unit of Measure	Quantity	x	Unit Price	=	Total Price
55034300	SS 1 RCEP S30 R19	FOOT	117.000				
55034500	SS 1 RCEP S38 R24	FOOT	68.000				
55034700	SS 1 RCEP S53 R34	FOOT	136.000				
55035300	SS 2 RCEP S23 R14	FOOT	117.000				
55035400	SS 2 RCEP S30 R19	FOOT	89.000				
55035500	SS 2 RCEP S34 R22	FOOT	172.000				
55035600	SS 2 RCEP S38 R24	FOOT	168.000				
55035700	SS 2 RCEP S45 R29	FOOT	242.000				
55036000	SS 2 RCEP S68 R43	FOOT	178.000				
* 55037000	SS 3 RCEP S60 R38	FOOT	224.000				
55100300	STORM SEWER REM 8	FOOT	200.000				
55100400	STORM SEWER REM 10	FOOT	53.000				
* 55100500	STORM SEWER REM 12	FOOT	2,415.000				
55100700	STORM SEWER REM 15	FOOT	965.000				
55100900	STORM SEWER REM 18	FOOT	3,071.000				

ILLINOIS DEPARTMENT OF TRANSPORTATION  
 SCHEDULE OF PRICES  
 CONTRACT  
 NUMBER -

62882

State Job # - C-91-071-05  
 PPS NBR - 1-75135-0600  
 County Name - KANE- MCHENRY-  
 Code - 89 - 111 -  
 District - 1 - 1 -  
 Section Number - (105X & 106) WRS-2

Project Number  
 ACNHF-HPP-1099/002/

Route  
 FAP 326

\* REVISED : DECEMBER 31, 2009

Item Number	Pay Item Description	Unit of Measure	Quantity	x	Unit Price	=	Total Price
55101200	STORM SEWER REM 24	FOOT	1,182.000				
55101500	STORM SEWER REM 33	FOOT	4,638.000				
55101800	STORM SEWER REM 42	FOOT	842.000				
552A0600	SS JKD CL A 18	FOOT	54.000				
56103000	D I WATER MAIN 6	FOOT	1,180.000				
56103100	D I WATER MAIN 8	FOOT	306.000				
56103200	D I WATER MAIN 10	FOOT	1,354.000				
56103300	D I WATER MAIN 12	FOOT	4,311.000				
56400500	FIRE HYDNNTS TO BE REM	EACH	14.000				
56400600	FIRE HYDRANTS	EACH	26.000				
59100100	GEOCOMPOSITE WALL DR	SQ YD	78.000				
60100060	CONC HDWL FOR P DRAIN	EACH	2.000				
* 60107600	PIPE UNDERDRAINS 4	FOOT	2,362.000				
60108100	PIPE UNDERDRAIN 4 SP	FOOT	20.000				
60109580	P UNDR FOR STRUCT 4	FOOT	311.000				

ILLINOIS DEPARTMENT OF TRANSPORTATION  
 SCHEDULE OF PRICES  
 CONTRACT  
 NUMBER -

62882

State Job # - C-91-071-05  
 PPS NBR - 1-75135-0600  
 County Name - KANE- MCHENRY-  
 Code - 89 - 111 -  
 District - 1 - 1 -  
 Section Number - (105X & 106) WRS-2

Project Number  
 ACNHF-HPP-1099/002/

Route  
 FAP 326

\* REVISED : DECEMBER 31, 2009

Item Number	Pay Item Description	Unit of Measure	Quantity	x	Unit Price	=	Total Price
60200805	CB TA 4 DIA T8G	EACH	31.000				
* 60201330	CB TA 4 DIA T23F&G	EACH	43.000				
* 60201340	CB TA 4 DIA T24F&G	EACH	205.000				
60204505	CB TA 5 DIA T8G	EACH	2.000				
60205040	CB TA 5 DIA T24F&G	EACH	1.000				
60207005	CB TC T1F CL	EACH	1.000				
* 60207605	CB TC T8G	EACH	29.000				
* 60218400	MAN TA 4 DIA T1F CL	EACH	27.000				
* 60221100	MAN TA 5 DIA T1F CL	EACH	85.000				
* 60223800	MAN TA 6 DIA T1F CL	EACH	24.000				
* 60224446	MAN TA 7 DIA T1F CL	EACH	25.000				
60226400	MAN DT 4 DIA T1F CL	EACH	1.000				
60234200	INLETS TA T1F OL	EACH	2.000				
* 60236200	INLETS TA T8G	EACH	2.000				
* 60237460	INLETS TA T23F&G	EACH	5.000				

ILLINOIS DEPARTMENT OF TRANSPORTATION  
 SCHEDULE OF PRICES  
 CONTRACT  
 NUMBER - 62882

State Job # - C-91-071-05  
 PPS NBR - 1-75135-0600  
 County Name - KANE- MCHENRY-  
 Code - 89 - 111 -  
 District - 1 - 1 -  
 Section Number - (105X & 106) WRS-2

Project Number  
 ACNHF-HPP-1099/002/

Route  
 FAP 326

\* REVISED : DECEMBER 31, 2009

Item Number	Pay Item Description	Unit of Measure	Quantity	x	Unit Price	=	Total Price
* 60237470	INLETS TA T24F&G	EACH	42.000				
60240328	INLETS TB T24F&G	EACH	5.000				
60248000	JUNCTION CHAMBER N1	EACH	1.000				
60248100	JUNCTION CHAMBER N2	EACH	1.000				
60248200	JUNCTION CHAMBER N3	EACH	1.000				
60249400	VALVE BOXES 6	EACH	6.000				
60249500	VALVE BOXES 8	EACH	6.000				
* 60250200	CB ADJUST	EACH	5.000				
60255500	MAN ADJUST	EACH	36.000				
* 60260100	INLETS ADJUST	EACH	10.000				
60265700	VV ADJUST	EACH	6.000				
60266500	VV REMOVED	EACH	10.000				
60500040	REMOV MANHOLES	EACH	93.000				
* 60500050	REMOV CATCH BAS	EACH	39.000				
* 60500060	REMOV INLETS	EACH	49.000				

ILLINOIS DEPARTMENT OF TRANSPORTATION  
 SCHEDULE OF PRICES  
 CONTRACT  
 NUMBER - 62882

State Job # - C-91-071-05  
 PPS NBR - 1-75135-0600  
 County Name - KANE- MCHENRY-  
 Code - 89 - 111 -  
 District - 1 - 1 -  
 Section Number - (105X & 106) WRS-2

Project Number  
 ACNHF-HPP-1099/002/

Route  
 FAP 326

\* REVISED : DECEMBER 31, 2009

Item Number	Pay Item Description	Unit of Measure	Quantity	x	Unit Price	=	Total Price
* 60600605	CONC CURB TB	FOOT	2,637.000				
* 60603800	COMB CC&G TB6.12	FOOT	1,846.000				
* 60605000	COMB CC&G TB6.24	FOOT	41,605.000				
60605400	COMB CC&G TB6.24 SPL	FOOT	225.000				
* 60609200	COMB CC&G TB6.12	FOOT	85.000				
* 60618300	CONC MEDIAN SURF 4	SQ FT	1,489.000				
* 60619124	CONC MED TSB-6 SPL	SQ FT	33,189.000				
60619600	CONC MED TSB6.12	SQ FT	8,785.000				
60620000	CONC MED TSB6.24	SQ FT	8,336.000				
* 60624600	CORRUGATED MED	SQ FT	3,734.000				
63000001	SPBGR TY A 6FT POSTS	FOOT	800.000				
* 63000003	SPBGR TY A 9FT POSTS	FOOT	650.000				
63100045	TRAF BAR TERM T2	EACH	6.000				
63100167	TR BAR TRM T1 SPL TAN	EACH	6.000				
63200310	GUARDRAIL REMOV	FOOT	1,617.000				

ILLINOIS DEPARTMENT OF TRANSPORTATION  
 SCHEDULE OF PRICES  
 CONTRACT  
 NUMBER -

62882

State Job # - C-91-071-05  
 PPS NBR - 1-75135-0600  
 County Name - KANE- MCHENRY-  
 Code - 89 - 111 -  
 District - 1 - 1 -  
 Section Number - (105X & 106) WRS-2

Project Number  
 ACNHF-HPP-1099/002/

Route  
 FAP 326

\* REVISED : DECEMBER 31, 2009

Item Number	Pay Item Description	Unit of Measure	Quantity	x	Unit Price	=	Total Price
66400305	CH LK FENCE 6	FOOT	57.000				
66400535	CH LK FENCE 6 ATT STR	FOOT	76.000				
66900105	UNDERGR STOR TANK REM	EACH	1.000				
66900200	NON SPL WASTE DISPOSL	CU YD	470.000				
66900400	SPL WAST GRD WAT DISP	GALLON	345.000				
66900450	SPL WASTE PLNS/REPORT	L SUM	1.000				
66900530	SOIL DISPOSAL ANALY	EACH	3.000				
66901000	BACKFILL PLUGS	CU YD	120.000				
67000400	ENGR FIELD OFFICE A	CAL MO	24.000				
67100100	MOBILIZATION	L SUM	1.000				
70101800	TRAF CONT & PROT SPL	L SUM	1.000				
70103815	TR CONT SURVEILLANCE	CAL DA	555.000				
* 70300210	TEMP PVT MK LTR & SYM	SQ FT	986.000				
* 70300220	TEMP PVT MK LINE 4	FOOT	71,104.000				
* 70300240	TEMP PVT MK LINE 6	FOOT	3,128.000				



ILLINOIS DEPARTMENT OF TRANSPORTATION  
 SCHEDULE OF PRICES  
 CONTRACT  
 NUMBER - 62882

State Job # - C-91-071-05  
 PPS NBR - 1-75135-0600  
 County Name - KANE- MCHENRY-  
 Code - 89 - 111 -  
 District - 1 - 1 -  
 Section Number - (105X & 106) WRS-2

Project Number  
 ACNHF-HPP-1099/002/

Route  
 FAP 326

\* REVISED : DECEMBER 31, 2009

Item Number	Pay Item Description	Unit of Measure	Quantity	x	Unit Price	=	Total Price
* 70300260	TEMP PVT MK LINE 12	FOOT	327.000				
* 70300280	TEMP PVT MK LINE 24	FOOT	620.000				
* 70301000	WORK ZONE PAVT MK REM	SQ FT	26,666.000				
70400100	TEMP CONC BARRIER	FOOT	2,740.000				
70400200	REL TEMP CONC BARRIER	FOOT	1,220.000				
70500100	TEMP SPBGR TY A	FOOT	50.000				
* 72000100	SIGN PANEL T1	SQ FT	832.000				
* 72900100	METAL POST TY A	FOOT	619.000				
* 72900200	METAL POST TY B	FOOT	252.000				
* 78008200	POLYUREA PM T1 LTR-SY	SQ FT	2,710.000				
* 78008210	POLYUREA PM T1 LN 4	FOOT	18,499.000				
* 78008230	POLYUREA PM T1 LN 6	FOOT	21,582.000				
* 78008240	POLYUREA PM T1 LN 8	FOOT	280.000				
* 78008250	POLYUREA PM T1 LN 12	FOOT	2,577.000				
* 78008270	POLYUREA PM T1 LN 24	FOOT	1,356.000				

ILLINOIS DEPARTMENT OF TRANSPORTATION  
 SCHEDULE OF PRICES  
 CONTRACT  
 NUMBER - 62882

State Job # - C-91-071-05  
 PPS NBR - 1-75135-0600  
 County Name - KANE- MCHENRY-  
 Code - 89 - 111 -  
 District - 1 - 1 -  
 Section Number - (105X & 106) WRS-2

Project Number  
 ACNHF-HPP-1099/002/

Route  
 FAP 326

\* REVISED : DECEMBER 31, 2009

Item Number	Pay Item Description	Unit of Measure	Quantity	x	Unit Price	=	Total Price
* 78100100	RAISED REFL PAVT MKR	EACH	1,142.000				
* 78200410	GUARDRAIL MKR TYPE A	EACH	36.000				
78200530	BAR WALL MKR TYPE C	EACH	320.000				
* 78201000	TERMINAL MARKER - DA	EACH	12.000				
78300100	PAVT MARKING REMOVAL	SQ FT	9,457.000				
80400100	ELECT SERV INSTALL	EACH	3.000				
80400200	ELECT UTIL SERV CONN	L SUM	1.000		1,500.000		1,500.000
* 81000600	CON T 2 GALVS	FOOT	12,156.000				
* 81000700	CON T 2 1/2 GALVS	FOOT	384.000				
* 81000800	CON T 3 GALVS	FOOT	171.000				
* 81001000	CON T 4 GALVS	FOOT	236.000				
81001100	CON T 5 GALVS	FOOT	40.000				
81017510	CON T 1 CNC	FOOT	580.000				
81017515	CON T 1 1/4 CNC	FOOT	1,120.000				
* 81018500	CON P 2 GALVS	FOOT	3,232.000				

ILLINOIS DEPARTMENT OF TRANSPORTATION  
 SCHEDULE OF PRICES  
 CONTRACT  
 NUMBER - 62882

State Job # - C-91-071-05  
 PPS NBR - 1-75135-0600  
 County Name - KANE- MCHENRY-  
 Code - 89 - 111 -  
 District - 1 - 1 -  
 Section Number - (105X & 106) WRS-2

Project Number  
 ACNHF-HPP-1099/002/

Route  
 FAP 326

\* REVISED : DECEMBER 31, 2009

Item Number	Pay Item Description	Unit of Measure	Quantity	x	Unit Price	=	Total Price
81018600	CON P 2 1/2 GALVS	FOOT	105.000				
81018700	CON P 3 GALVS	FOOT	1,025.000				
* 81018900	CON P 4 GALVS	FOOT	2,386.000				
81019000	CON P 5 GALVS	FOOT	635.000				
* 81400100	HANDHOLE	EACH	40.000				
* 81400200	HD HANDHOLE	EACH	15.000				
81400300	DBL HANDHOLE	EACH	9.000				
81400730	HANDHOLE C CONC	EACH	9.000				
81702120	EC C XLP USE 1C 8	FOOT	3,100.000				
81702130	EC C XLP USE 1C 6	FOOT	5,170.000				
81702460	EC C XLP USE 3-1C 3/0	FOOT	520.000				
* 81900200	TR & BKFIL F ELECT WK	FOOT	25,138.000				
82500508	LT CONT CBRS	EACH	3.000				
83600210	LIGHT POLE FDN 24D SP	FOOT	530.000				
83600215	LIGHT POLE FDN 24D OS	FOOT	429.000				

ILLINOIS DEPARTMENT OF TRANSPORTATION  
 SCHEDULE OF PRICES  
 CONTRACT  
 NUMBER - 62882

State Job # - C-91-071-05  
 PPS NBR - 1-75135-0600  
 County Name - KANE- MCHENRY-  
 Code - 89 - 111 -  
 District - 1 - 1 -  
 Section Number - (105X & 106) WRS-2

Project Number  
 ACNHF-HPP-1099/002/

Route  
 FAP 326

\* REVISED : DECEMBER 31, 2009

Item Number	Pay Item Description	Unit of Measure	Quantity	x	Unit Price	=	Total Price
83800505	BKWY DEV COU AL SKIRT	EACH	12.000				
85000200	MAIN EX TR SIG INSTAL	EACH	1.000				
85700205	FAC T4 CAB SPL	EACH	4.000				
86400100	TRANSCEIVER - FIB OPT	EACH	4.000				
87301215	ELCBL C SIGNAL 14 2C	FOOT	4,044.000				
* 87301225	ELCBL C SIGNAL 14 3C	FOOT	8,368.000				
* 87301245	ELCBL C SIGNAL 14 5C	FOOT	15,452.000				
* 87301255	ELCBL C SIGNAL 14 7C	FOOT	6,122.000				
* 87301305	ELCBL C LEAD 14 1PR	FOOT	13,382.000				
87301805	ELCBL C SERV 6 2C	FOOT	349.000				
87502480	TS POST GALVS 14	EACH	8.000				
87502490	TS POST GALVS 15	EACH	1.000				
* 87502500	TS POST GALVS 16	EACH	10.000				
* DELETED							
* 87700210	S MAA & P 34	EACH	1.000				

ILLINOIS DEPARTMENT OF TRANSPORTATION  
 SCHEDULE OF PRICES  
 CONTRACT  
 NUMBER -

62882

State Job # - C-91-071-05  
 PPS NBR - 1-75135-0600  
 County Name - KANE- MCHENRY-  
 Code - 89 - 111 -  
 District - 1 - 1 -  
 Section Number - (105X & 106) WRS-2

Project Number  
 ACNHF-HPP-1099/002/

Route  
 FAP 326

\* REVISED : DECEMBER 31, 2009

Item Number	Pay Item Description	Unit of Measure	Quantity	x	Unit Price	=	Total Price
87700220	S MAA & P 36	EACH	3.000				
87700240	S MAA & P 40	EACH	1.000				
87700260	S MAA & P 44	EACH	1.000				
87700280	S MAA & P 48	EACH	1.000				
* 87700290	S MAA & P 50	EACH	2.000				
* 87700310	S MAA & P 54	EACH	1.000				
* 87700330	S MAA & P 56	EACH	1.000				
* 87700400	S MAA & P 60	EACH	3.000				
* 87700404	S MAA & P 62	EACH	1.000				
87700408	S MAA & P 64	EACH	1.000				
87700424	S MAA & P 72	EACH	1.000				
* 87800100	CONC FDN TY A	FOOT	76.000				
87800150	CONC FDN TY C	FOOT	16.000				
87800415	CONC FDN TY E 36D	FOOT	135.000				
* 87800420	CONC FDN TY E 42D	FOOT	167.000				

ILLINOIS DEPARTMENT OF TRANSPORTATION  
 SCHEDULE OF PRICES  
 CONTRACT  
 NUMBER - 62882

State Job # - C-91-071-05  
 PPS NBR - 1-75135-0600  
 County Name - KANE- MCHENRY-  
 Code - 89 - 111 -  
 District - 1 - 1 -  
 Section Number - (105X & 106) WRS-2

Project Number  
 ACNHF-HPP-1099/002/

Route  
 FAP 326

\* REVISED : DECEMBER 31, 2009

Item Number	Pay Item Description	Unit of Measure	Quantity	x	Unit Price	=	Total Price
87900200	DRILL EX HANDHOLE	EACH	1.000				
88030020	SH LED 1F 3S MAM	EACH	38.000				
88030050	SH LED 1F 3S BM	EACH	4.000				
88030070	SH LED 1F 4S BM	EACH	2.000				
88030080	SH LED 1F 4S MAM	EACH	2.000				
88030110	SH LED 1F 5S MAM	EACH	12.000				
88030210	SH LED 2F 3S BM	EACH	4.000				
88030220	SH LED 2F 5S BM	EACH	2.000				
88030240	SH LED 2F 1-3 1-5 BM	EACH	8.000				
88102717	PED SH LED 1F BM CDT	EACH	16.000				
88102747	PED SH LED 2F BM CDT	EACH	4.000				
88200100	TS BACKPLATE	EACH	52.000				
88500100	INDUCTIVE LOOP DETECT	EACH	50.000				
88700200	LIGHT DETECTOR	EACH	15.000				
88700300	LIGHT DETECTOR AMP	EACH	4.000				

ILLINOIS DEPARTMENT OF TRANSPORTATION  
 SCHEDULE OF PRICES  
 CONTRACT  
 NUMBER - 62882

State Job # - C-91-071-05  
 PPS NBR - 1-75135-0600  
 County Name - KANE- MCHENRY-  
 Code - 89 - 111 -  
 District - 1 - 1 -  
 Section Number - (105X & 106) WRS-2

Project Number  
 ACNHF-HPP-1099/002/

Route  
 FAP 326

\* REVISED : DECEMBER 31, 2009

Item Number	Pay Item Description	Unit of Measure	Quantity	x	Unit Price	=	Total Price
88800100	PED PUSH-BUTTON	EACH	20.000				
89000100	TEMP TR SIG INSTALL	EACH	3.000				
89502375	REMOV EX TS EQUIP	EACH	3.000				
89502380	REMOV EX HANDHOLE	EACH	36.000				
89502385	REMOV EX CONC FDN	EACH	26.000				
89502500	REM TEMP TR SIG INST	EACH	1.000				

**TABLE OF CONTENTS**

LOCATION OF PROJECT ..... 1  
 DESCRIPTION OF PROJECT ..... 2  
 MAINTENANCE OF ROADWAYS ..... 2  
 STATUS OF UTILITIES TO BE ADJUSTED ..... 2  
 RAILROAD PROTECTIVE LIABILITY INSURANCE (5 AND 10) (BDE) ..... 4  
 UNION PACIFIC RAILROAD MINIMUM REQUIREMENTS ..... 5  
 RESTRICTION ON WORKING DAYS AFTER A COMPLETION DATE ..... 18  
 WORK RESTRICTIONS FOR PARCEL 1EW0016 ..... 18  
 INTERIM COMPLETION DATE ..... 18  
 COMPLETION DATE PLUS WORKING DAYS ..... 18  
 POROUS GRANULAR EMBANKMENT, SUBGRADE ..... 19  
 AGGREGATE SUBGRADE, 12" (300 MM) ..... 20  
 RECLAIMED ASPHALT PAVEMENT FOR NON-POROUS EMBANKMENT AND BACKFILL ..... 22  
 INLET FILTER CLEANING ..... 22  
 SEDIMENT CONTROL, SILT CURTAIN ..... 23  
 PROTECTION OF EXISTING TREES ..... 24  
 PERENNIAL PLANTS, WETLAND TYPE ..... 26  
 AGGREGATE SURFACE COURSE FOR TEMPORARY ACCESS ..... 26  
 BITUMINOUS PRIME COAT FOR HOT-MIX ASPHALT PAVEMENT (FULL DEPTH) (D-1) ..... 27  
 HOT MIX ASPHALT MIXTURE IL-4.75 (DIST 1) ..... 28  
 HOT MIX ASPHALT MIXTURES, EGA MODIFIED PERFORMANCE GRADED (PG) ASPHALT BINDER  
 ..... 30  
 COARSE AGGREGATE FOR HOT-MIX ASPHALT (HMA) (D-1) ..... 30  
 FINE AGGREGATE FOR HOT- MIX ASPHALT (HMA) (D-1) ..... 33  
 TEMPERATURE CONTROL FOR CONCRETE PLACEMENT (D-1) ..... 34  
 USE OF RAP (DIST 1) ..... 34  
 HIGH EARLY STRENGTH PORTLAND CEMENT CONCRETE PAVEMENT ..... 40  
 ISLAND REMOVAL ..... 40  
 MEDIAN SURFACE REMOVAL ..... 40  
 TEMPORARY PAVEMENT PATCH ..... 40  
 TEMPORARY PAVEMENT ..... 41  
 AGGREGATE SHOULDERS, TYPE B, 6" ..... 41  
 TIMBER RETAINING WALL REMOVAL ..... 41  
 EPOXY COATING ON REINFORCEMENT (DISTRICT ONE) ..... 42  
 STORM SEWER ADJACENT TO OR CROSSING WATER MAIN ..... 42

Revised 01/06/2010



BACKFILLING STORM SEWER UNDER ROADWAY ..... 42  
 BRACED EXCAVATION ..... 42  
 STORM SEWERS JACKED IN PLACE ..... 43  
 STEEL CASING ..... 43  
 JUNCTION CHAMBER ..... 44  
 COMBINATION CONCRETE CURB, TYPE M-4.24 ..... 45  
 CONCRETE MEDIANS..... 45  
 FENCE REMOVAL ..... 45  
 CHAIN LINK FENCE, 6' ATTACHED TO STRUCTURE ..... 45  
 REMOVAL AND DISPOSAL OF REGULATED SUBSTANCES ..... 46  
 WET REFLECTIVE PREFORMED PLASTIC PAVEMENT MARKINGS ..... 47  
 RECESS FOR PAVEMENT MARKING ..... 47  
 WORK ZONE TRAFFIC CONTROL (LUMP SUM PAYMENT) ..... 49  
 TRAFFIC CONTROL PLAN ..... 49  
 TRAFFIC CONTROL AND PROTECTION FOR TEMPORARY DETOUR ..... 51  
 TEMPORARY INFORMATION SIGNING ..... 51  
 TRAFFIC CONTROL FOR WORK ZONE AREAS ..... 52  
 TYPE III TEMPORARY TAPE FOR WET CONDITIONS ..... 52  
 LONGITUDINAL CHANNELIZER ..... 53  
 RAILROAD FOUNDATIONS..... 54  
 TEMPORARY SOIL RETENTION SYSTEM ..... 54  
 GEOTEXTILE RETAINING WALLS..... 56  
 PIPE UNDERDRAINS FOR STRUCTURES ..... 59  
 POROUS GRANULAR EMBANKMENT, SPECIAL..... 60  
 DEMOLITION PLANS FOR REMOVAL OF EXISTING STRUCTURES ..... 60  
 VILLAGE OF HUNTLEY LIGHTING SPECIAL PROVISIONS..... 61  
 VILLAGE OF HUNTLEY UTILITY SPECIAL PROVISIONS ..... 70  
 TRAFFIC SIGNAL SPECIFICATIONS..... 93  
 MODIFY TEMPORARY TRAFFIC SIGNAL INSTALLATION ..... 140  
 REMOVE TEMPORARY TRAFFIC SIGNAL INSTALLATION ..... 140  
 FULL-ACTUATED CONTROLLER AND CABINET (SPECIAL)..... 141  
 ALKALI-SILICA REACTION FOR CAST-IN-PLACE CONCRETE (BDE) ..... 141  
 ALKALI-SILICA REACTION FOR PRECAST AND PRECAST PRESTRESSED CONCRETE (BDE) .... 144  
 APPROVAL OF PROPOSED BORROW AREAS, USE AREAS, AND/OR WASTE AREAS INSIDE  
 ILLINOIS STATE BORDERS (BDE) ..... 147

Revised 01/06/2010

CEMENT (BDE) ..... 147  
 CONCRETE ADMIXTURES (BDE) ..... 149  
 CONSTRUCTION AIR QUALITY - DIESEL VEHICLE EMISSIONS CONTROL (BDE) ..... 152  
 CONSTRUCTION AIR QUALITY - IDLING RESTRICTIONS (BDE)..... 153  
 DETERMINATION OF THICKNESS (BDE)..... 154  
 DIGITAL TERRAIN MODELING FOR EARTHWORK CALCULATIONS (BDE) ..... 165  
 DISADVANTAGED BUSINESS ENTERPRISE PARTICIPATION (BDE) ..... 166  
 DOWEL BARS (BDE) ..... 173  
 ENGINEER’S FIELD OFFICE TYPE A (BDE) ..... 173  
 EQUIPMENT RENTAL RATES (BDE)..... 175  
 FILTER FABRIC (BDE)..... 176  
 FLAGGER AT SIDE ROADS AND ENTRANCES (BDE) ..... 177  
 HMA - HAULING ON PARTIALLY COMPLETED FULL-DEPTH PAVEMENT (BDE) ..... 177  
 HOT-MIX ASPHALT – ANTI-STRIPPING ADDITIVE (BDE) ..... 179  
 HOT-MIX ASPHALT - DENSITY TESTING OF LONGITUDINAL JOINTS (BDE) ..... 179  
 HOT-MIX ASPHALT – DROP-OFFS (BDE) ..... 180  
 HOT-MIX ASPHALT – PLANT TEST FREQUENCY (BDE) ..... 180  
 HOT-MIX ASPHALT – QC/QA ACCEPTANCE CRITERIA (BDE) ..... 182  
 HOT-MIX ASPHALT – TRANSPORTATION (BDE) ..... 182  
 IMPACT ATTENUATORS, TEMPORARY (BDE) ..... 182  
 LIQUIDATED DAMAGES (BDE)..... 184  
 MAST ARM ASSEMBLY AND POLE (BDE)..... 184  
 METAL HARDWARE CAST INTO CONCRETE (BDE)..... 186  
 NATIONAL POLLUTANT DISCHARGE ELIMINATION SYSTEM / EROSION AND SEDIMENT  
 CONTROL DEFICIENCY DEDUCTION (BDE) ..... 186  
 NOTIFICATION OF REDUCED WIDTH (BDE) ..... 187  
 PAYMENTS TO SUBCONTRACTORS (BDE) ..... 188  
 PERSONAL PROTECTIVE EQUIPMENT (BDE) ..... 189  
 POLYUREA PAVEMENT MARKING (BDE) ..... 189  
 PRECAST CONCRETE HANDLING HOLES (BDE) ..... 196  
 RAISED REFLECTIVE PAVEMENT MARKERS (BDE) ..... 197  
 REFLECTIVE SHEETING ON CHANNELIZING DEVICES (BDE) ..... 197  
 REINFORCEMENT BARS - STORAGE AND PROTECTION (BDE)..... 198  
 SEEDING (BDE) ..... 199  
 SELF-CONSOLIDATING CONCRETE FOR PRECAST PRODUCTS (BDE)..... 201  
 SUBCONTRACTOR MOBILIZATION PAYMENTS (BDE) ..... 202  
 TEMPORARY EROSION CONTROL (BDE) ..... 202

TRAINING SPECIAL PROVISIONS ..... 204  
STORM WATER POLLUTION PREVENTION PLAN..... 207  
FLOODWAY PERMIT ..... 218  
BITUMINOUS MATERIALS COST ADJUSTMENTS (BDE) (RETURN FORM WITH BID) ..... 235  
FUEL COST ADJUSTMENT (BDE) (RETURN FORM WITH BID) ..... 238  
STEEL COST ADJUSTMENT (BDE) (RETURN FORM WITH BID) ..... 242

Revised 01/06/2010

Site Location 5 is located between Stations 83+19.85 to 83+87.28 and is a residence. The address is: 10911 North IL Route 47.

Site Location 6 is located between Stations 87+95.49 to 88+50.00 and is commonly known as S.S. Clippers. The address is: 10816 North IL Route 47

**DESCRIPTION OF PROJECT**

The scope of work consists of pavement widening and reconstruction; bridge structure removal for the Illinois Route 47 structure over the South Branch of the Kishwaukee River and replacement with a triple cell 10’x8’ concrete box culvert and traffic signal modernization at Kreutzer Road, Main Street, Algonquin Road and Reed Road. Also included in the scope of work is curb and gutter; barrier median; sidewalk; pavement marking and signing, landscaping, erosion control, building removals and asbestos removal at the building removal locations and all incidental and collateral work necessary to complete the project as shown on the Plans and as described herein.

**MAINTENANCE OF ROADWAYS**

Effective: September 30, 1985

Revised: November 1, 1996

Beginning on the date that work begins on this project, the Contractor shall assume responsibility for normal maintenance of all existing roadways within the limits of the improvement. This normal maintenance shall include all repair work deemed necessary by the Engineer, but shall not include snow removal operations. Traffic control and protection for maintenance of roadways will be provided by the Contractor as required by the Engineer.

If items of work have not been provided in the contract, or otherwise specified for payment, such items, including the accompanying traffic control and protection required by the Engineer, will be paid for in accordance with Article 109.04 of the Standard Specifications.

**STATUS OF UTILITIES TO BE ADJUSTED**

Effective: January 30, 1987

Revised: July 1, 1994

Utility companies involved in this project have provided the following estimated dates:

<u>Name of Utility</u>	<u>Type</u>	<u>Location</u>	<u>Estimated Dates for Start and Completion of Relocation or Adjustments</u>
Nicor Gas	Existing Gas Main	Sta 15+60 to 75+60, LT Sta 62+80 to 94+65, RT Sta 94+70 to 108+70, LT Sta 111+40 to 123+15, RT Sta 132+55, RT Sta 134+10 to 142+10	Prior to Stage 1 Construction
	Proposed Gas Main	Sta 22+50 to 25+00, RT Sta 26+50 to 31+00, RT Sta 501+57, RT (Main St.)	During Construction

Revised 01/06/2010

AT&T	Underground Telephone	Sta 39+92, RT Sta 41+20 to 76+20, RT Sta 82+10 to 92+20, RT Sta 95+02, LT Sta 95+60 to 97+50 , RT Sta 102+48, RT Sta 107+78, RT Sta 109+34 to 134+05, RT Sta 112+65 to 113+75, LT	Prior to Stage 1 Construction
Comcast	Underground Cable TV	Sta 10+55 to 21+45, LT Sta 69+85 to 87+65, LT Sta 102+55, RT Sta 127+65 to 132+15, RT	Prior to Stage 1 Construction
COMED	Underground Electric	Sta 10+65 to 23+00, LT Sta 104+60 to 142+10, LT	Prior to Stage 1 Construction
	Existing Utility Pole	Sta 23+00, LT; Sta 35+48, LT Sta 50+37, LT; Sta 52+48, LT	Prior to Stage 1 Construction
	Proposed Utility Pole	Sta 22+10, LT; Sta 22+74, LT; Sta 37+40, RT; Sta 501+75, RT (Main St.)	During Construction
Village of Huntley	Sanitary Sewer	Sta 24+50 to 26+00, LT Sta 30+27, LT Sta 79+00 to 84+25, RT Sta 88+60 to 92+65, RT Sta 95+60 to 100+20 RT	During Construction – Plans included within this contract to address conflicts.
	Sanitary Lift Station	STA. 501+67.11, 26.0' RT (Main St.)	During Construction– Plans included within this contract to address conflicts.
	Water Main	Sta 10+55 to 21+20, LT Sta 30+30 to 115+60, RT Sta 131+97, LT Sta 133+10 to 142+08	During Construction– Plans included within this contract to address conflicts.
UNKNOWN	Underground Fiber Optic	Sta 71+21, LT; Sta 71+36, LT Sta 75+29, LT; Sta 76+33, LT Sta 76+78 to 78+01, LT Sta 79+08, LT Sta 80+08 to 83+35, LT Sta 84+32, LT	Prior to Stage 1 Construction

The above represents the best information available to the Department and is included for the convenience of the bidder. The applicable portions of Articles 105.07 and 107.31 of the Standard Specifications shall apply.

Revised 01/06/2010

The printing system will be inspected by the Engineer prior to production and verified at the beginning of each construction season thereafter.

**1031.08 RAP in Aggregate Surface Course and Aggregate Shoulders.** The use of RAP in aggregate surface course and aggregate shoulders shall be as follows.

- (a) Stockpiles and Testing. RAP stockpiles may be any of those listed in Article 1031.02, except "Other". The testing requirements of Article 1031.03 shall not apply.
- (b) Gradation. One hundred percent of the RAP material shall pass the 1 1/2 in. (37.5 mm) sieve. The RAP material shall be reasonably well graded from coarse to fine. RAP material that is gap-graded or single sized will not be accepted."

### **HIGH EARLY STRENGTH PORTLAND CEMENT CONCRETE PAVEMENT**

This work shall consist of the construction of High Early Strength Portland Cement Concrete to a thickness specified in the plans. This work shall be in accordance with Section 420 of the Standard Specifications, the details in the plans and as described herein.

This work will be measured and paid at the contract unit price per square yard for HIGH-EARLY-STRENGTH PORTLAND CEMENT CONCRETE, (JOINTED) or HIGH-EARLY-STRENGTH PORTLAND CEMENT CONCRETE of the thickness specified.

### **ISLAND REMOVAL**

This work shall consist of the removal of concrete barrier island removal including the combination concrete curb and gutter or curb at the locations shown in the plans. This work shall be performed in accordance with Section 440 of the Standard Specifications except as modified herein.

It shall be measured for payment in place and paid for at the contract unit price per square foot for ISLAND REMOVAL which price shall include all labor, equipment and material necessary to perform this work.

### **MEDIAN SURFACE REMOVAL**

This work shall consist of the removal of existing median surface at the locations shown in the plans. This work shall be performed in accordance with Section 440 of the Standard Specifications except as modified herein. It shall be measured for payment in place and paid for at the contract unit price per square foot for MEDIAN SURFACE REMOVAL which price shall include all labor, equipment and material necessary to perform this work.

### **TEMPORARY PAVEMENT PATCH**

This work shall consist of construction of a temporary pavement patch to repair the existing pavement that will be removed due to the installation of a storm sewer.

Revised 01/06/2010

This page deliberately left blank.

Revised 01/06/2010

This page deliberately left blank.

Revised 01/06/2010



This page deliberately left blank.

Revised 01/06/2010

This page deliberately left blank.

Revised 01/06/2010

This page deliberately left blank.

Revised 01/06/2010

This page deliberately left blank.

Revised 01/06/2010

This page deliberately left blank.

Revised 01/06/2010

This page deliberately left blank.

Revised 01/06/2010

This page deliberately left blank.

Revised 01/06/2010

This page deliberately left blank.

Revised 01/06/2010



This page deliberately left blank.

Revised 01/06/2010

**MONTHLY EMPLOYMENT REPORT (BDE)**

Effective: April 1, 2009

Revised: January 1, 2010

In addition to any other reporting required by the contract, the Contractor shall provide to the Engineer an employment summary for all employees working on the contract from the contract execution date to the last full pay period each month for the duration of the contract. The report may include but is not limited to:

- a) Total number of employees.
- b) The total hours worked.
- c) Total payroll.

The report shall be completed by the Contractor. The Contractor shall also report for each subcontractor. Employee hours worked from home office or other off-site office hours worked related directly to this contract shall be included. Engineering consulting firms performing construction layout and material testing for the Contractor shall also be included.

Hours worked for material suppliers, services provided by purchase orders, Department employees or consulting firms performing inspection or testing for the Department shall not be included in the report.

The report shall contain all hours worked under the contract from the start of the month to the last full pay period each month and shall be submitted no later than five business days after the end of each month.

The report shall be submitted electronically by accessing the Department's website (<http://www.dot.il.gov/stimulus/index.html>).

Any costs associated with complying with this provision shall be considered as included in the contract unit prices bid for the various items of work involved and no additional compensation will be allowed.

**BUILDING REMOVAL - CASE I (NON-FRIABLE AND FRIABLE ASBESTOS ABATEMENT) (BDE)**

Effective: September 1, 1990

Revised: January 1, 2007

**BUILDING REMOVAL:** This work shall consist of the removal and disposal of building(s), together with all foundations, retaining walls, and piers, down to a plane 1 ft (300 mm) below the ultimate or existing grade in the area and also all incidental and collateral work necessary to complete the removal of the building(s) in a manner approved by the Engineer. Any holes, such as basements, shall be filled with a suitable granular material. The building(s) are identified as follows:

Bldg No.	Parcel No.	Location	Description
1	1EW0072	Southwest Corner of IL 47 and Main Street	2 Commercial Buildings
2	1EW0018	Southeast Corner of IL 47 and Main Street	Commercial Building
3	1EW0072	Northwest Corner of IL 47 and Main Street	Commercial Building
4	1EW0075	Station 78+41.03 to 72+72.88 LT	Commercial Building
5	1EW0078	Station 83+19.85 to 83+87.28 LT	Residential Building
6	1EW0030	Station 87+95.49 to 88+50.00 RT	Commercial Building
7	1EW0099	Station 78+41.03 to 72+72.88 LT	Commercial Building

Discontinuance of Utilities: The Contractor shall arrange for the discontinuance of all utility services that serve the building(s) according to the respective requirements and regulations of the City, County, or utility companies involved. The Contractor shall disconnect and seal, in an approved manner, all service outlets that serve any building(s) he/she is to remove.

Signs: Immediately upon execution of the contract and prior to the wrecking of any structures, the Contractor shall be required to paint or stencil, in contrasting colors of an oil base paint, on all four sides of each residence and two opposite sides of other structures, the following sign:

PROPERTY ACQUIRED FOR  
 HIGHWAY CONSTRUCTION  
 TO BE DEMOLISHED BY THE

VANDALS WILL BE PROSECUTED

The signs shall be positioned in a prominent location on the structure so that they can be easily seen and read and at a sufficient height to prevent defacing. The Contractor shall not paint signs nor start demolition of any building(s) prior to the time that the State becomes the owner of the respective building(s).

All friable asbestos shall be removed from the building(s) prior to demolition. The Contractor has the option of removing the non-friable asbestos prior to demolition or demolishing the building(s) with the non-friable asbestos in place. Refer to the Special Provisions titled "Asbestos Abatement (General Conditions)", "Removal and Disposal of Friable Asbestos Building No. \_\_\_\_\_", "Removal and Disposal of Non-Friable Asbestos Building No. 4", "Removal and Disposal of Non-Friable Asbestos Building No. 5", and "Removal and Disposal of Non-Friable Asbestos Building No. \_\_\_\_" contained herein.

Basis of Payment: This work will be paid for at the contract lump sum unit price for BUILDING REMOVAL, numbers as listed above, which price shall be payment in full for complete removal of the buildings and structures, including any necessary backfilling material as specified herein. The lump sum unit price(s) for this work shall represent the cost of demolition and disposal assuming all asbestos, friable and non-friable, is removed prior to demolition. Any salvage value shall be reflected in the contract unit price for this item.

EXPLANATION OF BIDDING TERMS: Three separate contract unit price items have been established for the removal of each building. They are:

1. BUILDING REMOVAL of the number indicated
2. REMOVAL AND DISPOSAL OF FRIABLE ASBESTOS, BUILDING NO. of the number indicated
3. REMOVAL AND DISPOSAL OF NON-FRIABLE ASBESTOS, BUILDING NO. of the number indicated

The Contractor shall have two options available for the removal and disposal of the non-friable asbestos.

The pay item for removal and disposal of non-friable asbestos will not be deleted regardless of the option chosen by the Contractor.

ASBESTOS ABATEMENT (GENERAL CONDITIONS): This work consists of the removal and disposal of friable and non-friable asbestos from the building(s) to be demolished. All work shall be done according to the requirements of the U.S. Environmental Protection Agency (USEPA), the Illinois Environmental Protection Agency (IEPA), the Occupational Safety and Health Administration (OSHA), the Special Provisions for "Removal and Disposal of Friable Asbestos, Building No. \_\_\_\_", "Removal and Disposal of Friable Asbestos Building No. 4", "Removal and Disposal of Non-Friable Asbestos Building No. 5", and "Removal and Disposal of Non-Friable Asbestos, Building No. \_\_\_\_", and as outlined herein.

Sketches indicating the location of Asbestos Containing Material (ACM) are included in the proposal on pages 38 thru 41g. Also refer to the Materials Description Table on page 41h for a brief description and location of the various materials. Also included is a Materials Quantities Table on page 41i. This table states whether the ACM is friable or non-friable and gives the approximate quantity. The quantities are given only for information and it shall be the Contractor's responsibility to determine the exact quantities prior to submitting his/her bid.

The work involved in the removal and disposal of friable asbestos, and non-friable asbestos if done prior to demolition, shall be performed by a Contractor or Sub-Contractor prequalified with the Illinois Capital Development Board.

The Contractor shall provide a shipping manifest, similar to the one shown on page 41j, to the Engineer for the disposal of all ACM wastes.

Permits: The Contractor shall apply for permit(s) in compliance with applicable regulations of the Illinois Environmental Protection Agency. Any and all other permits required by other federal, state, or local agencies for carrying on the work shall be the responsibility of the Contractor. Copies of these permits shall be sent to the district office and the Engineer.

Notifications: The "Demolition/Renovation Notice" form, which can be obtained from the IEPA office, shall be completed and submitted to the address listed below at least ten days prior to commencement of any asbestos removal or demolition activity. Separate notices shall be sent for the asbestos removal work and the building demolition if they are done as separate operations.

Asbestos Demolition/Renovation Coordinator  
Illinois Environmental Protection Agency  
Division of Air Pollution Control  
P. O. Box 19276  
Springfield, Illinois 62794-9276  
(217)785-1743

Notices shall be updated if there is a change in the starting date or the amount of asbestos changes by more than 20 percent.

Submittals:

- A. All submittals and notices shall be made to the Engineer, except where otherwise specified herein.
- B. Submittals that shall be made prior to start of work:
  1. Submittals required under Asbestos Abatement Experience.
  2. Submit documentation indicating that all employees have had medical examinations and instruction on the hazards of asbestos exposure, on use and fitting of respirators, on protective dress, on use of showers, on entry and exit from work areas, and on all aspects of work procedures and protective measures as specified in Worker Protection Procedures.
  3. Submit manufacturer's certification stating that vacuums, ventilation equipment, and other equipment required to contain airborne fibers conform to ANSI 29.2.
  4. Submit to the Engineer the brand name, manufacturer, and specification of all sealants or surfactants to be used. Testing under existing conditions will be required at the direction of the Engineer.
  5. Submit proof that all required permits, site locations, and arrangements for transport and disposal of asbestos-containing or asbestos-contaminated materials, supplies, and the like have been obtained (i.e., a letter of authorization to utilize designated landfill).
  6. Submit a list of penalties, including liquidated damages, incurred through noncompliance with asbestos abatement project specifications.

7. Submit a detailed plan of the procedures proposed for use in complying with the requirements of this specification. Include in the plan the location and layout of decontamination units, the sequencing of work, the respiratory protection plan to be used during this work, a site safety plan, a disposal plan including the location of an approved disposal site, and a detailed description of the methods to be used to control pollution. The plan shall be submitted to the Engineer prior to the start of work.
8. Submit proof of written notification and compliance with Paragraph "Notifications".

Submittals that shall be made upon completion of abatement work:

9. Submit copies of all waste chain-of-custodies, trip tickets, and disposal receipts for all asbestos waste materials removed from the work area;
10. Submit daily copies of work site entry logbooks with information on worker and visitor access;
11. Submit logs documenting filter changes on respirators, HEPA vacuums, negative pressure ventilation units, and other engineering controls; and
12. Submit results of any bulk material analysis and air sampling data collected during the course of the abatement including results of any on-site testing by any federal, state, or local agency.

Certificate of Insurance:

- A. The Contractor shall document general liability insurance for personal injury, occupational disease and sickness or death, and property damage.
- B. The Contractor shall document current Workmen's Compensation Insurance coverage.
- C. The Contractor shall supply insurance certificates as specified by the Department.

Asbestos Abatement Experience:

- A. Company Experience: Prior to starting work, the Contractor shall supply evidence that he/she has been prequalified with the Illinois Capital Development Board and that he/she has been included on the Illinois Department of Public Health's list of approved Contractors.
- B. Personnel Experience:
  1. For Superintendent, the Contractor shall supply:
    - a. Evidence of knowledge of applicable regulations in safety and environmental protection is required as well as training in asbestos abatement as evidenced by the successful completion of a training course in supervision of asbestos abatement as specified in 40 CFR 763, Subpart E, Appendix C, EPA Model Contractor Accreditation Plan. A copy of the certificate of successful completion shall be provided to the Engineer prior to the start of work.

- b. Documentation of experience with abatement work in a supervisory position as evidenced through supervising at least two asbestos abatement projects; provide names, contact, phone number, and locations of two projects in which the individual(s) has worked in a supervisory capacity.
2. For workers involved in the removal of friable and non-friable asbestos, the Contractor shall provide training as evidenced by the participation and successful completion of an accredited training course for asbestos abatement workers as specified in 40 CFR 763, Subpart E, Appendix C, EPA Model Contractor Accreditation Plan. A copy of the certificate of successful completion shall be provided to all employees who will be working on this project.

ABATEMENT AIR MONITORING: The Contractor shall comply with the following:

- A. Personal Monitoring: All personal monitoring shall be conducted per specifications listed in OSHA regulation, Title 29, Code of Federal Regulation 1926.58. All area sampling shall be conducted according to 40 CFR Part 763.90. All air monitoring equipment shall be calibrated and maintained in proper operating condition. Excursion limits shall be monitored daily. Personal monitoring is the responsibility of the Contractor. Additional personal samples may be required by the Engineer at any time during the project.
- B. Contained Work Areas for Removal of Friable Asbestos: Area samples shall be collected for the department within the work area daily. A minimum of one sample shall be taken outside of the abatement area removal operations. The Engineer will also have the option to require additional personal samples and/or clearance samples during this type of work.
- C. Interior Non-Friable Asbestos-Containing Materials: The Contractor shall perform personal air monitoring during removal of all nonfriable Transite and floor tile removal operations. The Engineer will also have the option to require additional personal samples and/or clearance samples during this type of work.
- D. Exterior Non-Friable Asbestos-Containing Materials: The Contractor shall perform personal air monitoring during removal of all nonfriable cementitious panels, piping, roofing felts, and built up roofing materials that contain asbestos.

The Contractor shall conduct down wind area sampling to monitor airborne fiber levels at a frequency of no less than three per day.

- E. Air Monitoring Professional
  1. All air sampling shall be conducted by a qualified Air Sampling Professional supplied by the Contractor. The Air Sampling Professional shall submit documentation of successful completion of the National Institute for Occupational Safety and Health (NIOSH) course #582 - "Sampling and Evaluating Airborne Asbestos Dust".
  2. Air sampling shall be conducted according to NIOSH Method 7400. The results of these tests shall be provided to the Engineer within 24 hours of the collection of air samples.

REMOVAL AND DISPOSAL OF FRIABLE ASBESTOS, BUILDING NO. \_\_\_\_: This work consists of the removal and disposal of all friable asbestos from the building(s) prior to demolition. The work shall be done according to the Special Provision titled "Asbestos Abatement (General Conditions)" and as outlined herein.

This work will be paid for at the contract unit price per lump sum for REMOVAL AND DISPOSAL OF FRIABLE ASBESTOS, BUILDING NO. \_\_\_\_ , as shown, which price shall include furnishing all labor, materials, equipment and services required to remove and dispose of the friable asbestos.

REMOVAL AND DISPOSAL OF NON-FRIABLE ASBESTOS, BUILDING NO. \_\_\_\_  
REMOVAL AND DISPOSAL OF NON-FRIABLE ASBESTOS, BUILDING NO. 4  
REMOVAL AND DISPOSAL OF NON-FRIABLE ASBESTOS, BUILDING NO. 5 : The Contractor has the option of removing and disposing of the non-friable asbestos prior to demolition of the building(s) or demolishing the building(s) with the non-friable asbestos in place.

Option #1 - If the Contractor chooses to remove all non-friable asbestos prior to demolition, the work shall be done according to the Special Provision titled "Asbestos Abatement (General Conditions)".

Option #2 - If the Contractor chooses to demolish the building(s) with the non-friable asbestos in place, the following provisions shall apply:

1. Continuously wet all non-friable ACM and other building debris with water during demolition.
2. Dispose of all demolition debris as asbestos containing material by placing it in lined, covered transport haulers and placing it in an approved landfill.

This work will be paid for at the contract unit price per lump sum for REMOVAL AND DISPOSAL OF NON-FRIABLE ASBESTOS, BUILDING NO. \_\_\_\_ , REMOVAL AND DISPOSAL OF NON-FRIABLE ASBESTOS, BUILDING NO. 4, and REMOVAL AND DISPOSAL OF NON-FRIABLE ASBESTOS, BUILDING NO. 5, as shown.

The cost for this work shall be determined as follows:

Option #1 - Actual cost of removal and disposal of non-friable asbestos.

Option #2 - The difference in cost between removing and disposing of the building if all non-friable asbestos is left in place and removing and disposing of the building assuming all non-friable asbestos is removed prior to demolition.

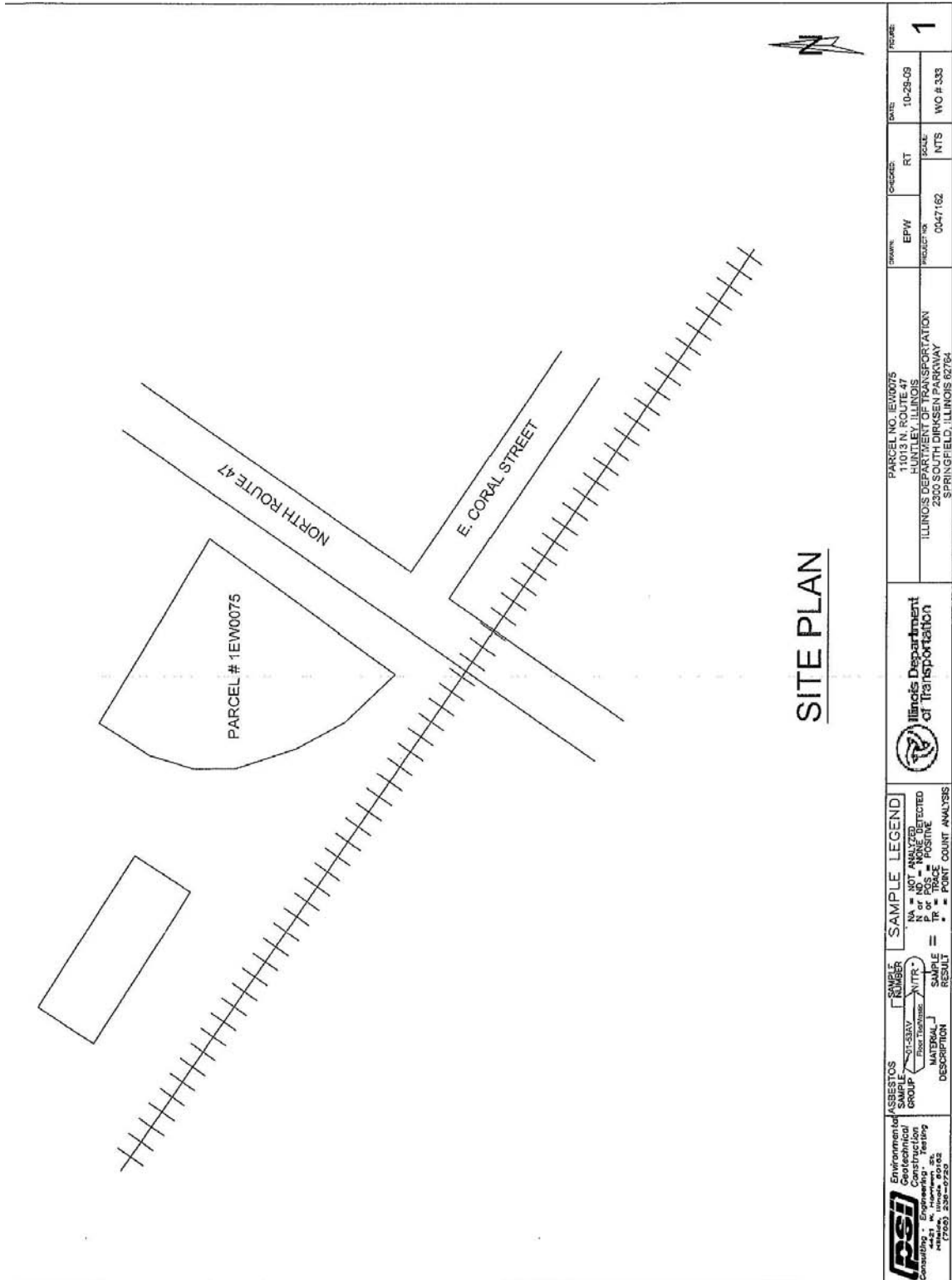
The cost of removing and disposing of the building(s), assuming all asbestos, friable and nonfriable is removed first, shall be represented by the pay item(s) "BUILDING REMOVAL NO. 4", "BUILDING REMOVAL NO. 5", and "BUILDING REMOVAL NO. \_\_\_\_".

Regardless of the option chosen by the Contractor, this pay item will not be deleted, nor will the pay item(s) BUILDING REMOVAL NO. 4, BUILDING REMOVAL NO. 5, or BUILDING REMOVAL NO. \_\_\_\_ be deleted.

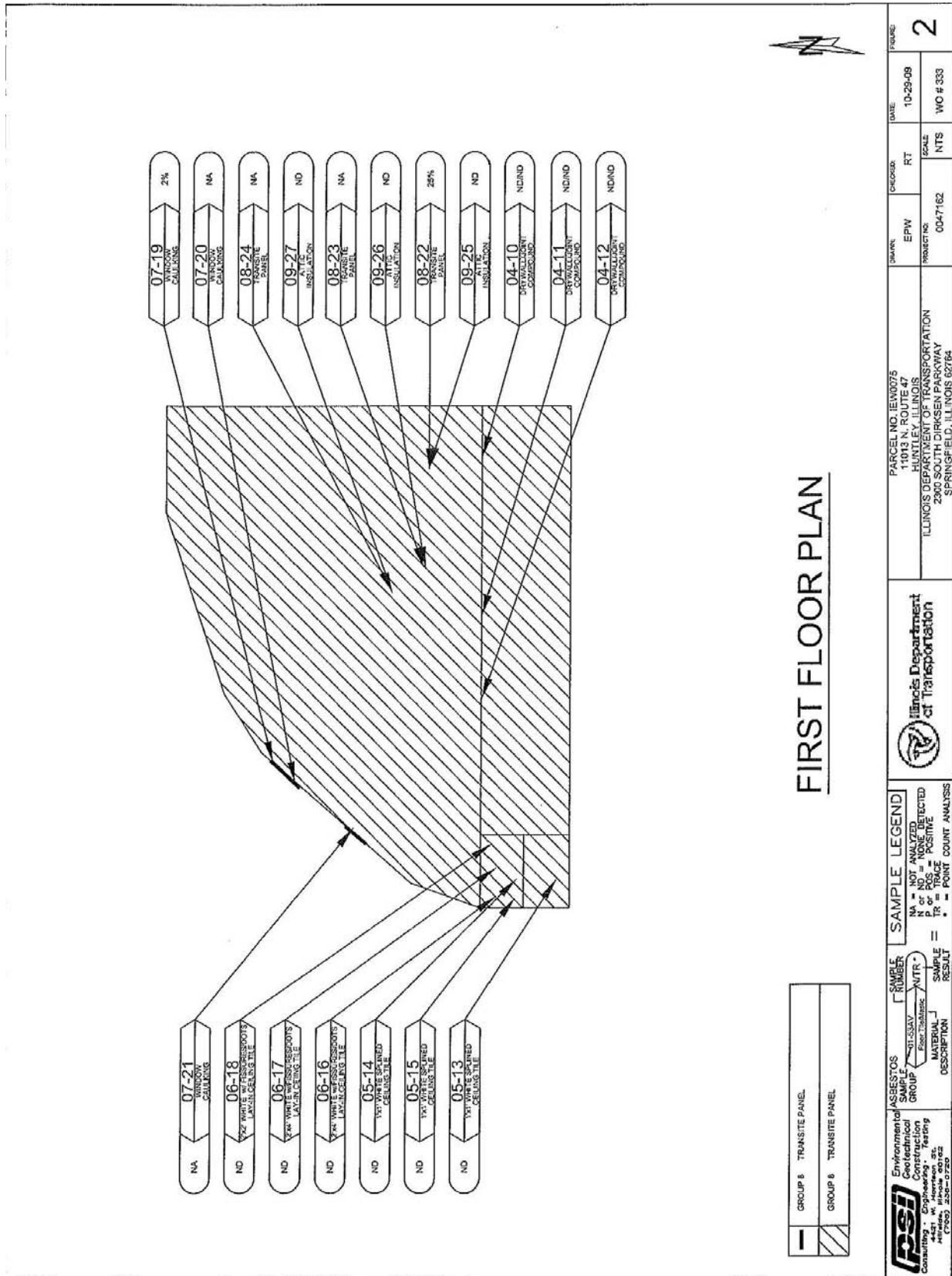


APPENDIX A

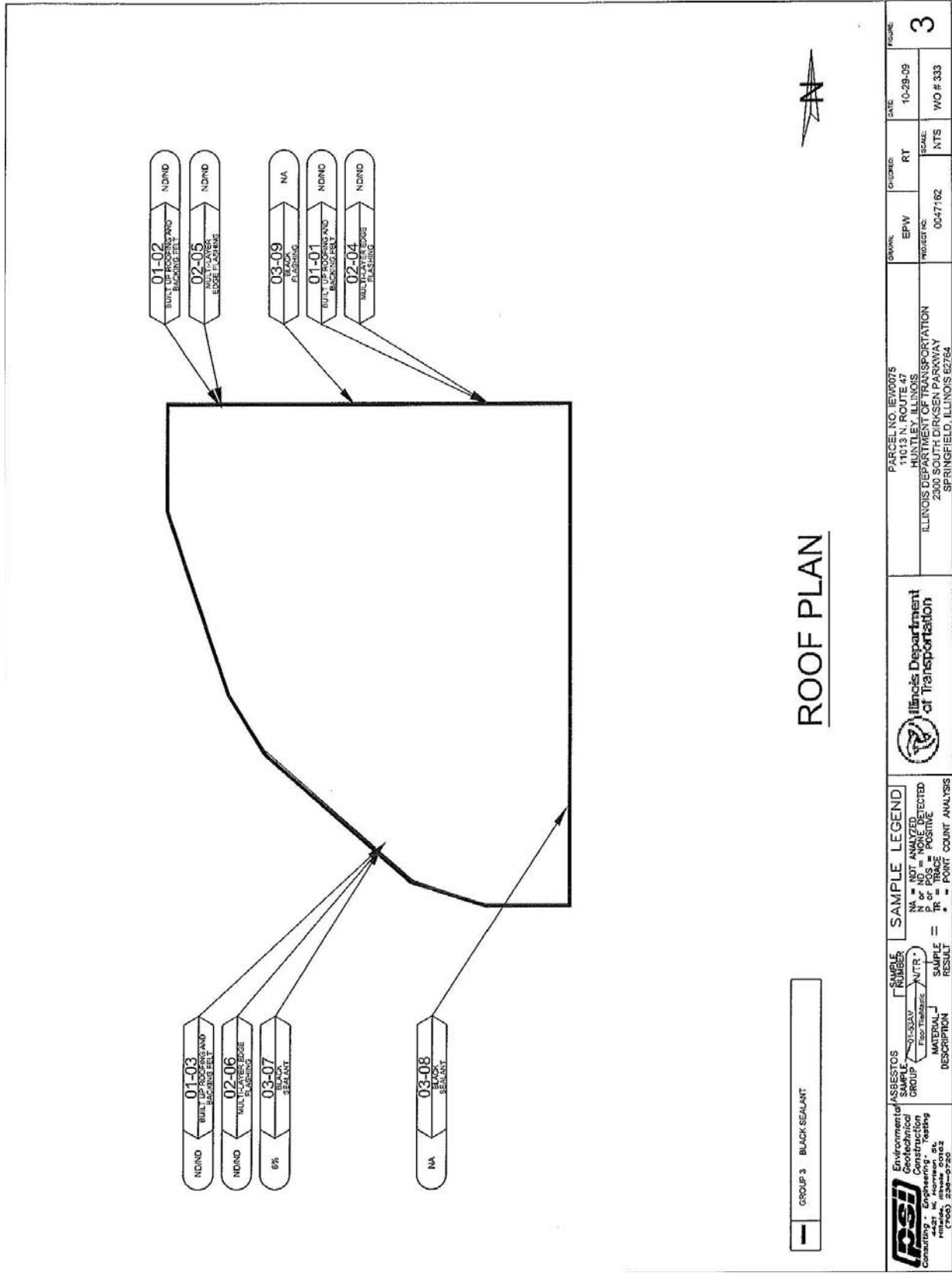
LOCATION SKETCHES



 <b>PSI</b> Environmental Geotechnical Consulting - Engineering - Testing 1000 N. Lincoln St., Suite 200 Springfield, Illinois 62762 (765) 238-9750	<b>ANALYSTS</b> GROUP ST-343V Floor Thickness MATERIAL DESCRIPTION	<b>SAMPLE LEGEND</b> NA = NOT ANALYZED P or PC = POSITIVE TR = TRACE * = POINT COUNT ANALYSIS	 <b>Illinois Department          of Transportation</b>	PARCEL NO. 1EW0075 HUNTLEY, ILLINOIS ILLINOIS DEPARTMENT OF TRANSPORTATION 2300 SOUTH DIRKSEN PARKWAY SPRINGFIELD, ILLINOIS 62764	DRAWN: EPW PROJECT NO: 0047162	CHECKED: RT SCALE: NTS	DATE: 10-29-09 WO # 333	FIGURE: 1
--	---	---	---	---	-----------------------------------	---------------------------	----------------------------	-----------



FIRST FLOOR PLAN



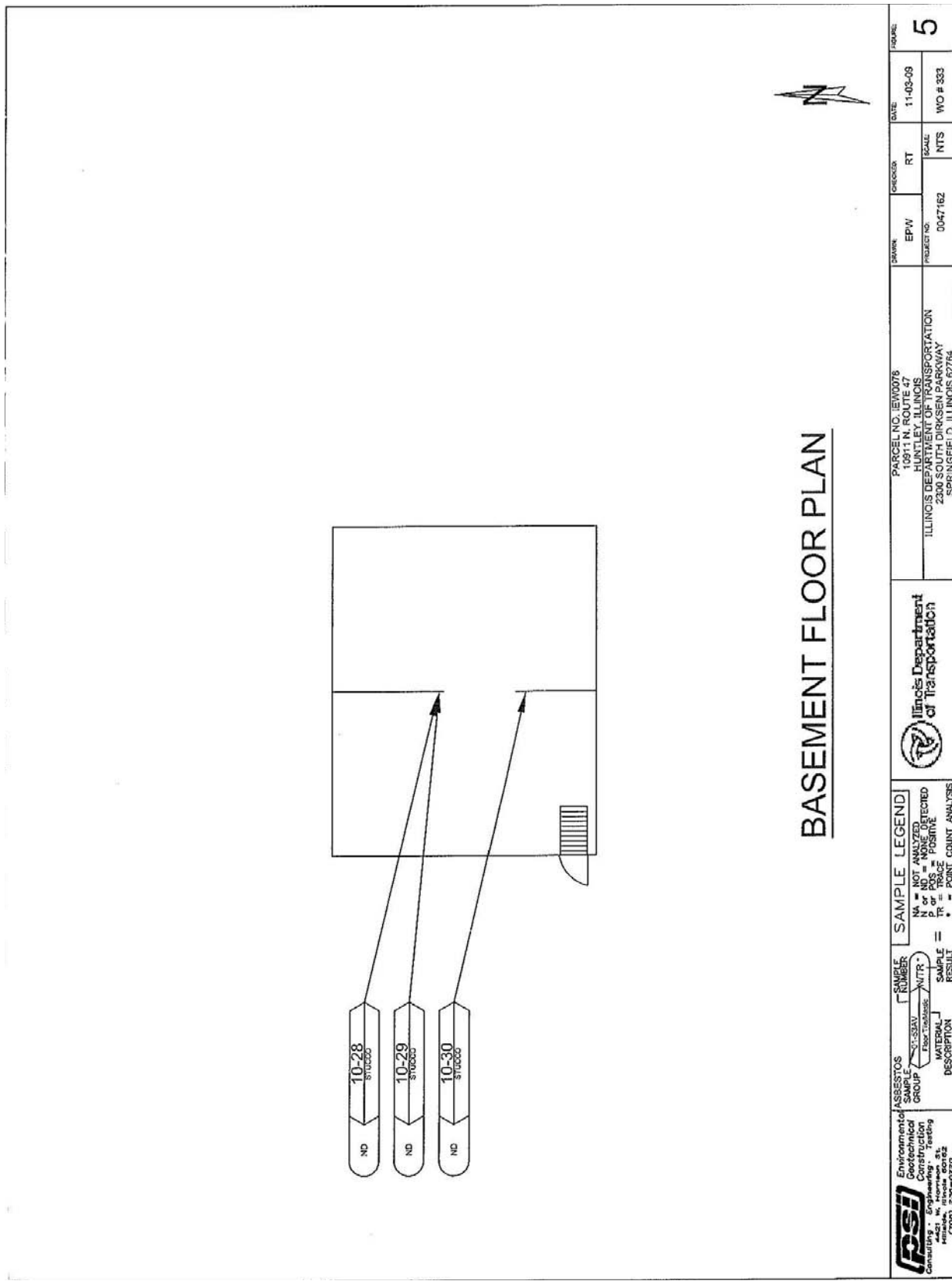
# ROOF PLAN

GROUP 3 BLACK SEALANT

<b>Environmental Geotechnical Construction</b> CONSULTING ENGINEERS 4421 W. NORMAN ST. PEORIA, ILLINOIS 61614-2022	<b>ASBESTOS SAMPLE GROUP</b> (X-RAY FLUORESCENCE)	<b>SAMPLE LEGEND</b> NA = NOT ANALYZED N of ND = NONE DETECTED N of POS = POSITIVE R = POINT COUNT ANALYSIS		PARCEL NO. 1E1W0075 11013 N. ROUTE 47 HUNTLEY, ILLINOIS ILLINOIS DEPARTMENT OF TRANSPORTATION 2300 SOUTH DIRKSEN PARKWAY SPRINGFIELD, ILLINOIS 62764	DRAWN: EPW PROJECT NO: 0047182	CHECKED: RT SCALE: NTS	DATE: 10-29-09 WO # 333	FIGURE: 3
				Environmental Geotechnical Construction CONSULTING ENGINEERS 4421 W. NORMAN ST. PEORIA, ILLINOIS 61614-2022				

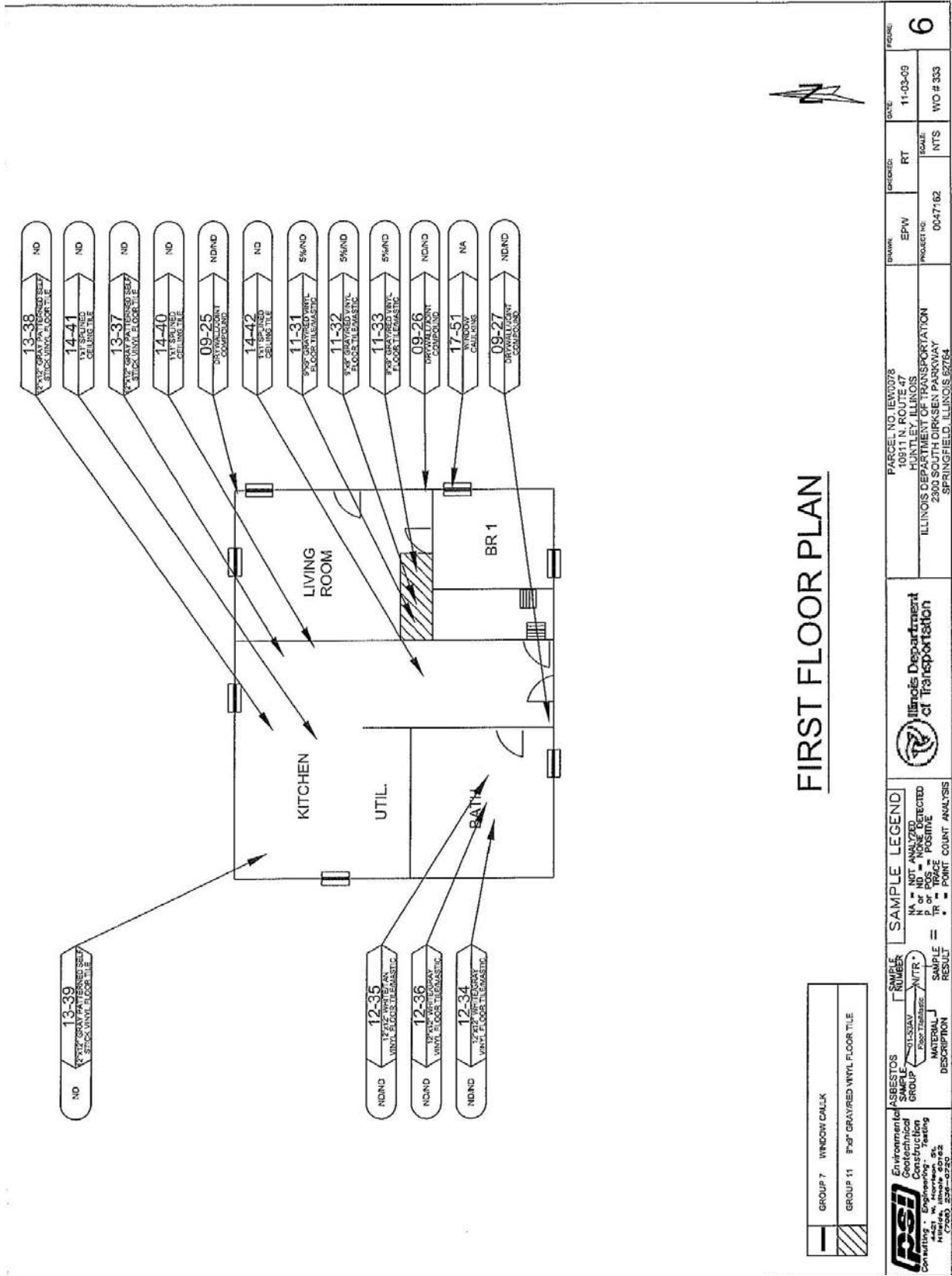


 PSI Environmental, Geotechnical, Construction Geology 4421 W. Harrison, St. Chicago, IL 60641 (773) 238-0720	ASBESTOS GROUP Environmental, Geotechnical, Construction Geology	SAMPLE NUMBER 07-33AV (See Analysis)	MATERIAL DESCRIPTION NTR SAMPLE RESULT	SAMPLE LEGEND NA = NOT ANALYZED N or ND = NONE DETECTED P or + = POSITIVE T+ = POINT COUNT ANALYSIS		 Illinois Department of Transportation 2300 SOUTH DIRKSEN PARKWAY SPRINGFIELD, ILLINOIS 62764	DRAWN EPW	CHECKED RT	DATE 11-03-08	FIGURE 4
				PROJECT NO. 0047162	SCALE NTS		WO # 333			



**BASEMENT FLOOR PLAN**

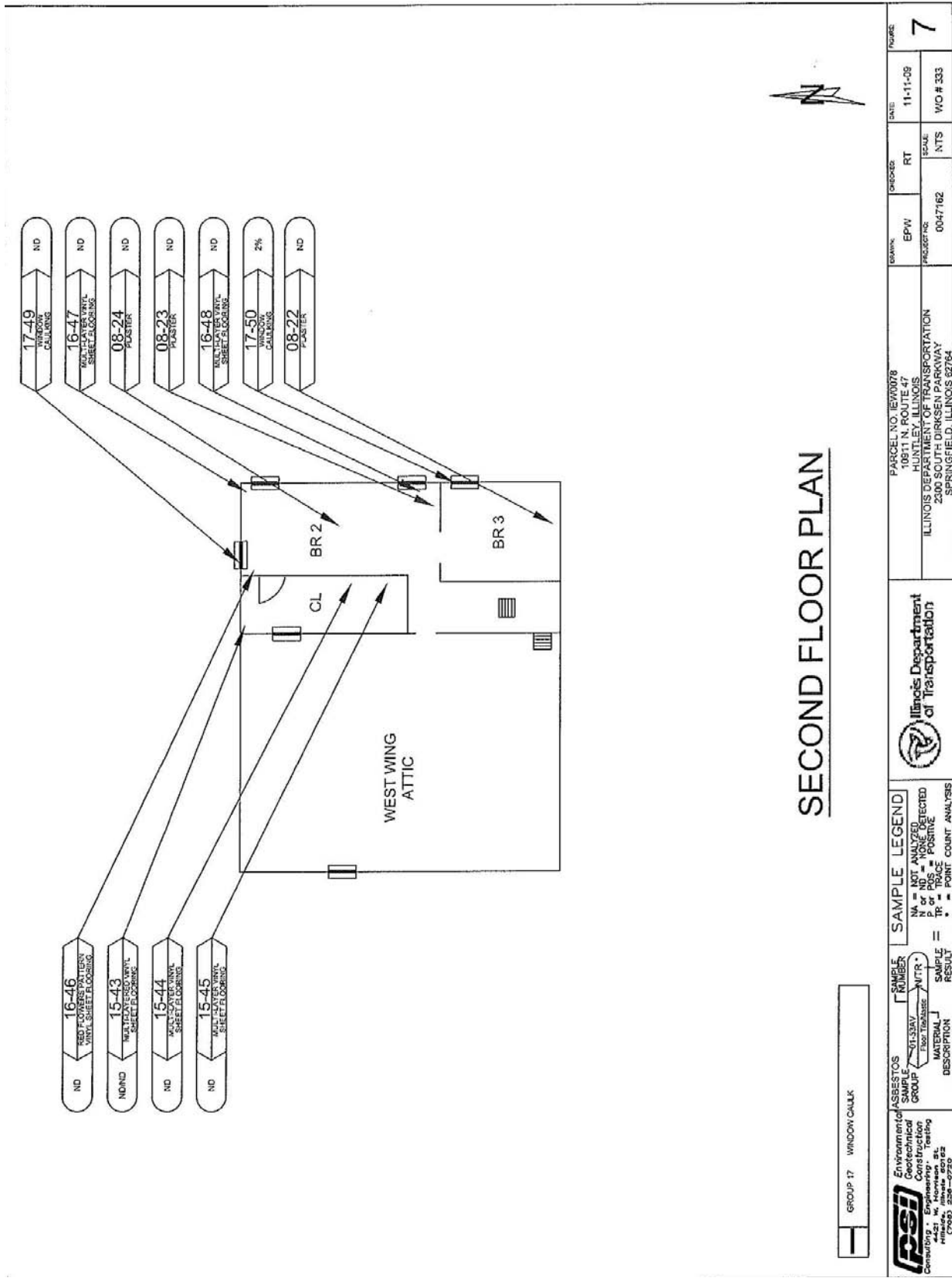
Environmental Geotechnical Construction Consulting - Engineering - Testing 1111 North Lincoln Street, Suite 202 Peoria, Illinois 61602 (309) 259-0720	ASBESTOS SAMPLE GROUP 10-28 10-29 10-30	SAMPLE NUMBER 10-28 10-29 10-30	SAMPLE LEGEND N = NOT ANALYZED P = POSITIVE T = TRACE * = POINT COUNT ANALYSIS	Illinois Department of Transportation	DRAWN: EPW CHECKED: RT DATE: 11-03-09 PROJECT NO: 0047162 SCALE: NTS WO # 333	FIGURE: <b>5</b>
	PARCEL NO. 1E1W0078 10911 N. ROUTE 47 HUNTLEY, ILLINOIS ILLINOIS DEPARTMENT OF TRANSPORTATION 2300 SOUTH DIRIGEN PARKWAY SPRINGFIELD, ILLINOIS 62764					

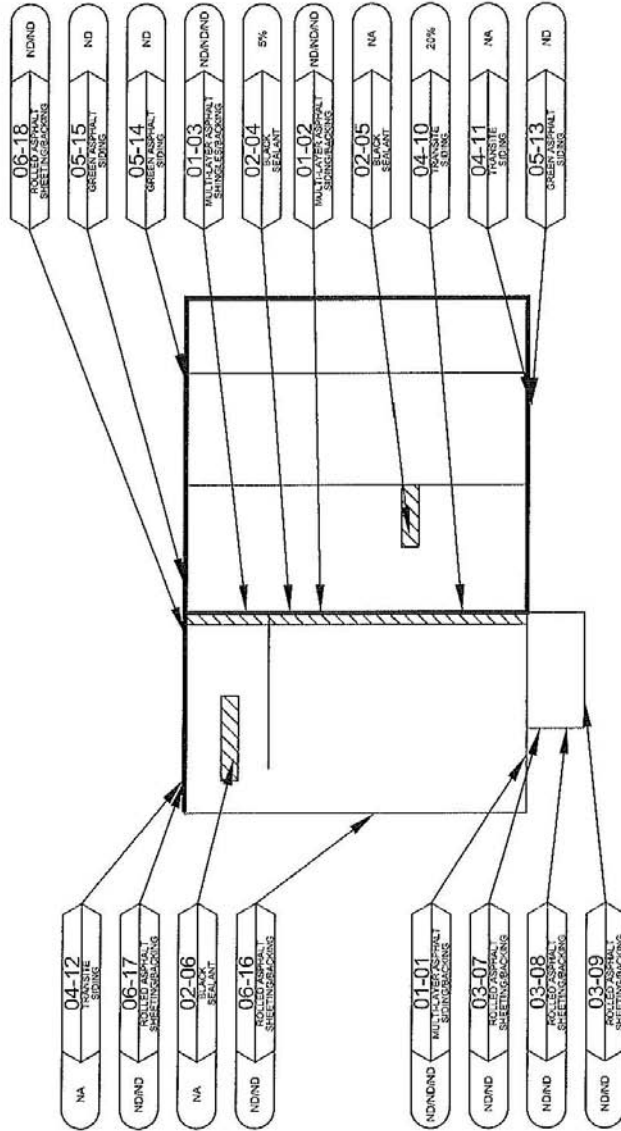


# FIRST FLOOR PLAN

GROUP 7	WINDOW CALC
GROUP 11	8\"/>

<b>psd</b> Environmental Geotechnical Construction Consulting 1421 W. Jefferson St. Chicago, IL 60607-2022	<b>ASBESTOS</b> SAMPLE GROUP N = NOT ANALYZED ND = NONE DETECTED P = POSITIVE * = POINT COUNT ANALYSIS	<b>SAMPLE LEGEND</b> N = NOT ANALYZED ND = NONE DETECTED P = POSITIVE * = POINT COUNT ANALYSIS	PARCEL NO. IEV0078 10911 N. ROUTE 47 ILLINOIS DEPARTMENT OF TRANSPORTATION 2300 SOUTH DIRKSEN PARKWAY SPRINGFIELD, ILLINOIS 62764	DRAWN: EPW PROJECT NO: 0047782	DESIGNED: RT SCALE: NTS	DATE: 11-03-09 FIGURE: 6
	ILLINOIS Department of Transportation	PROJECT NO: 0047782 SCALE: NTS	DATE: 11-03-09 FIGURE: 6			



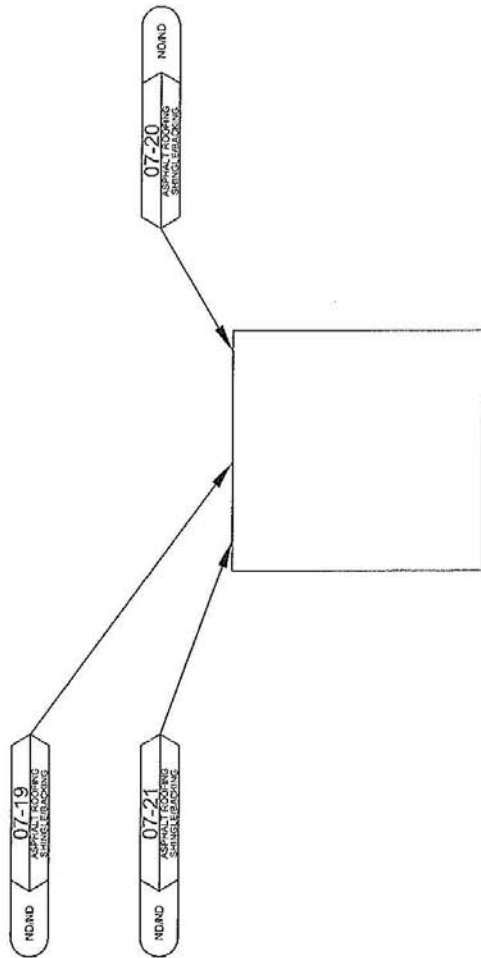


# HOUSE ROOF PLAN

GROUP 4	TRANSITE PANEL
GROUP 2	BLACK SEALANT

Environmental Geotechnical Construction Consulting 4421 W. Northport St. Chicago, IL 60649-0220	SAMPLE LEGEND NA = NOT ANALYZED N or ND = NONE DETECTED P or PS = POSITIVE P+ = POINT COUNT ANALYSIS	ILLINOIS Department of Transportation	DATE: 11-03-09 FIGURE: 8
	PARCEL NO. 1E1W0078 10911 N. ROUTE 47 HENRY, ILLINOIS ILLINOIS DEPARTMENT OF TRANSPORTATION 2300 SOUTH DIRKSEAN PARKWAY SPRINGFIELD, ILLINOIS 62764	DRAWN: EPW PROJECT NO: 0047182 RT: NTS	SCALE: NTS W/O # 333





# SHED ROOF PLAN

 Environmental Consulting & Engineering 2301 W. JAMES STREET SPRINGFIELD, IL 62760 (217) 259-0780	<b>ASBESTOS SAMPLE GROUP</b> 07-19-19 FLOOR TILES MATERIAL J DESCRIPTION	<b>SAMPLE NUMBER</b> 07-19-19 FLOOR TILES MATERIAL J DESCRIPTION	<b>SAMPLE LEGEND</b> NA = NOT ANALYZED P = POSITIVE TR = TRACE * = POINT COUNT ANALYSIS	 Illinois Department of Transportation	PARCEL NO. 18V0078 10911 N. ROUTE 47 HUNTLEY, ILLINOIS ILLINOIS DEPARTMENT OF TRANSPORTATION 2300 SOUTH DIRKSEN PARKWAY SPRINGFIELD, ILLINOIS 62754	DRAWN: EPW PRODUCT NO. 0047162	DATE: 11-03-09 RT SCALE: NTS	FIGURE: 9 WO # 333
---	--	--	---	---	--	-----------------------------------	------------------------------------	-----------------------

APPENDIX B

MATERIALS DESCRIPTION TABLE

<b>Material Description</b>	<b>% and Type of Asbestos</b>	<b>Location, Description, Sample Number (if Applicable)</b>
-----------------------------	-------------------------------	---

Building No. 4, Commercial Property, Parcel No. 1EW0075

Black sealant material	6% Chrysotile	Roof; Black, Flashing, Homogeneous; Sample 03-07
Window caulking	2% Chrysotile	Framed windows; Beige, Caulking, Homogeneous; Sample 07-19
Transite panels	25% Chrysotile	Throughout ceiling and roof; Gray, Transite, Homogeneous;; Sample 08-22

Building No. 5, Residential Property, Parcel No. 1EW0078

Black sealant	5% Chrysotile	House roof; Black, Flashing, Homogeneous; Sample 02-04
Transite siding	20% Chrysotile	House exterior; Gray, Transite, Homogeneous; Sample 04-10
9"x9" gray with red spots vinyl floor tile/mastic	Tile, 5% Chrysotile Mastic, None Detected	First floor living room; Gray, Floor Tile, Homogeneous; Samples 11-31, 11-32, and 11-33
Window caulking	2% Chrysotile	Second floor east wing; Off-White, Caulking, Homogeneous; Sample 17-50

APPENDIX C

MATERIALS QUANTITIES TABLE

The following are approximate quantities of ACM to be removed from the building indicated. These material quantities do not indicate the cleaning required to remove asbestos debris and resulting contamination from the work areas.

Material	Floor	Quantity Present	Fribale
----------	-------	------------------	---------

Building No. 4, Commercial Property, Parcel No. 1EW0075

Black sealant material	Roof	230 S.F.	No
Window caulking	1 <sup>st</sup> Floor	575 L.F.	No
Transite panels	1 <sup>st</sup> Floor and Roof	5,700 S.F.	No

Building No. 5, Residential Property, Parcel No. 1EW0078

Black sealant	House Roof	15 L.F.	No
Transite siding	House Exterior	1,255 S.F.	No
9"x9" gray with red spots vinyl floor tile/ mastic	1 <sup>st</sup> Floor Living Room	10 S.F.	No
Window caulking	2 <sup>nd</sup> Floor East Wing	120 L.F.	No

APPENDIX D

SHIPPING MANIFEST  
 Generator

1. Work Site name and Mailing Address	Owner's Name	Owner's Telephone No.
2. Operator's Name and Address	Operator's Telephone No.	
3. Waste Disposal Site (WDS) Name Mailing Address, and Physical Site Location	WDS Telephone No.	
4. Name and Address of Responsible Agency		
5. Description of Materials		
6. Containers	No.	Type
7. Total Quantity	M <sup>3</sup>	(Yd <sup>3</sup> )
8. Special Handling Instructions and Additional Information		
9. OPERATOR'S CERTIFICATION: I hereby declare that the contents of this consignment are fully and accurately described above by proper shipping name and are classified, packed, marked, and labeled, and are in all respects in proper condition for transport by highway according to applicable international and government regulations.		
Printed/Typed Name & Title	Signature	Month Day Year

Transporter

10. Transporter 1 (Acknowledgement of Receipt of Materials)		
Printed/ Typed name & Title	Signature	Month Day Year
Address and Telephone No.		
11. Transporter 2 (Acknowledgement of Receipt of Materials)		
Printed/Typed Name & Title	Signature	Month Day Year

Disposal Site

12. Discrepancy Indication Space		
13. Waste Disposal Site Owner or Operator: Materials As Noted in Item	Certification of Receipt of Asbestos Covered By This Manifest Except 12	
Printed/Typed Name & Title	Signature	Month Day Year

APPENDIX D

INSTRUCTIONS

Waste Generator Section (Items 1-9)

1. Enter the name of the facility at which asbestos waste is generated and the address where the facility is located. In the appropriate spaces, also enter the name of the owner of the facility and the owner's phone number.
2. If a demolition or renovation, enter the name and address of the Company and authorized agent responsible for performing the asbestos removal. In the appropriate spaces, also enter the phone number of the operator.
3. Enter the name, address, and physical site location of the waste disposal site (WDS) that will be receiving the asbestos materials. In the appropriate spaces, also enter the phone number of the WDS. Enter "on-site" if the waste will be disposed of on the generator's property.
4. Provide the name and address of the local, State, or EPA Regional Office responsible for administering the asbestos NESHAP program.
5. Indicate the types of asbestos waste materials generated. If from a demolition or renovation, indicate the amount of asbestos that is
  - Friable asbestos material
  - Nonfriable asbestos material
6. Enter the number of containers used to transport the asbestos materials listed in Item 5. Also enter one of the following container codes used in transporting each type of asbestos material (specify any other type of container used if not listed below):
  - DM - Metal drums, barrels
  - DP - Plastic drums, barrels
  - BA - 6 mil plastic bags or wrapping
7. Enter the quantities of each type of asbestos material removed in units of cubic meters (cubic yards).
8. Use this space to indicate special transportation, treatment, storage or disposal or Bill of Lading information. If an alternate waste disposal site is designated, note it here. Emergency response telephone numbers or similar information may be included here.
9. The authorized agent of the waste generator shall read and then sign and date this certification. The date is the date of receipt by transporter.

NOTE: The waste generator shall retain a copy of this form.

APPENDIX D

INSTRUCTIONS

Transporter Section (Items 10 & 11)

10. & 11. Enter name, address, and telephone number of each transporter used, if applicable. Print or type the full name and title of person accepting responsibility and acknowledging receipt of materials as listed on this waste shipment record for transport.

NOTE: The transporter shall retain a copy of this form.

Disposal Site Section (Items 12 & 13)

12. The authorized representative of the WDS shall note in this space any discrepancy between waste described on this manifest and waste actually received as well as any improperly enclosed or contained waste. Any rejected materials should be listed and destination of those materials provided. A site that converts asbestos-containing waste material to nonasbestos material is considered a WDS.

13. The signature (by hand) of the authorized WDS agent indicates acceptance and agreement with statements on this manifest except as noted in Item 12. The date is the date of signature and receipt of shipment.

NOTE: The WDS shall retain a completed copy of this form. The WDS shall also send a completed copy to the operator listed in Item 2.

## **TEMPORARY DRAINAGE STRUCTURES**

This work shall consist of constructing temporary drainage structures with frame and grate in accordance with the applicable portions of Section 602 of the Standard Specifications and as described herein.

Basis of Payment: This work will be paid according at the contract unit price per each for TEMPORARY CATCH BASINS, TEMPORARY MANHOLES, TEMPORARY INLETS of the type or type and diameter specified and with the type of frame and grate or framed and lid specified.

Removal and disposal of temporary drainage structures and frame and grate or frame and lid shall be not be paid for separately but included in the cost of the item.

Trench backfill will be paid for according to Article 208.04 of the Standard Specifications.

## **TEMPORARY STORM SEWER**

This work shall consist of furnishing and installing storm sewer in accordance with the applicable portions of Section 550 of the Standard Specifications and as described herein.

Storm sewers used as proposed temporary connections shall be designated Temporary Storm Sewer and shall be furnished, installed, and maintained as specified, except that the material for the storm sewer need not be new material.

This work shall include all work necessary to connect the temporary sewer to an existing drainage structure. Upon removal of the temporary storm sewer, the wall penetration shall be patched with brick and mortar as per Article 550.05 and the steel plate removed and replaced with existing frame and grate to the satisfaction of the Engineer.

After the temporary connection has been removed, the storm sewer shall become the property of the Contractor.

Basis of Payment: This work will be paid at the contract unit per foot for TEMPORARY STORM SEWER of the size specified.

Any modifications, repairs, or patching to existing drainage structures will not be paid for separately but shall be considered to be included in the contract unit price for the temporary storm sewer items.

Removal of the temporary storm sewer will not be paid for separately but shall be considered to be included in the contract unit price for the temporary storm sewer items.

Trench backfill will be paid for according to Article 208.04 of the Standard Specifications.