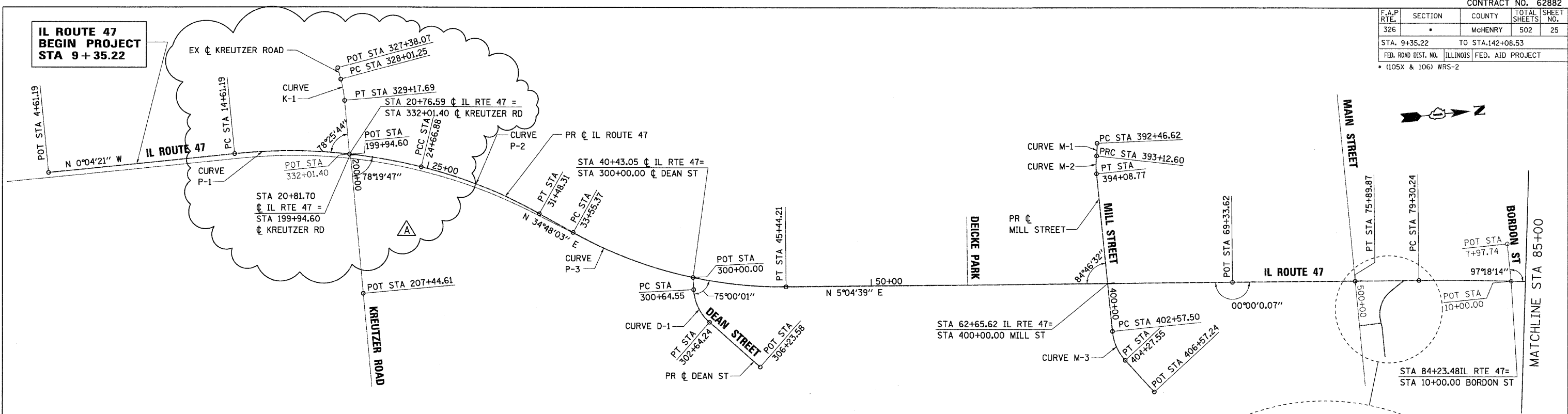


F.A.P. RTE.	SECTION	COUNTY	TOTAL SHEETS	SHEET NO.
326		MCHENRY	502	25
STA. 9+35.22		TO STA.142+08.53		
FED. ROAD DIST. NO.		ILLINOIS FED. AID PROJECT		
* (105X & 106) WRS-2				



CURVE P-1
 PI STA = 19+68.96
 $\Delta = 19^\circ 31' 58''$ (RT)
 D = $1^\circ 56' 32''$
 R = 2,950.00'
 T = 507.77'
 L = 1,005.69'
 E = 43.38'
 e = 0.027
 T.R. = 96.0'
 S.E. RUN = 129.6'
 PC STA = 14+61.19
 PT STA = 24+66.88

CURVE P-2
 PI STA = 28+09.68
 $\Delta = 15^\circ 29' 27''$ (RT)
 D = $2^\circ 16' 24''$
 R = 2,520.38'
 T = 342.81'
 L = 681.43'
 E = 23.21'
 e = 0.029
 T.R. = N/A
 S.E. RUN = N/A
 PC STA = 24+66.88
 PT STA = 31+48.31

CURVE P-3
 PI STA = 39+63.49
 $\Delta = 29^\circ 43' 24''$ (LT)
 D = $2^\circ 30' 01''$
 R = 2,291.66'
 T = 608.12'
 L = 1,188.84'
 E = 79.31'
 e = 0.030
 T.R. = 72.0'
 S.E. RUN = 108.0'
 PC STA = 33+55.37
 PT STA = 45+44.21

CURVE P-4
 PI STA = 83+74.97
 $\Delta = 3^\circ 32' 39''$ (RT)
 D = $0^\circ 23' 55''$
 R = 14,375.21'
 T = 444.74'
 L = 889.19'
 E = 6.88'
 e = N/C
 T.R. = N/A
 S.E. RUN = N/A
 PC STA = 79+30.24
 PT STA = 88+19.43

CURVE K-1
 PI STA = 328+59.61
 $\Delta = 9^\circ 46' 02''$ (RT)
 D = $8^\circ 23' 20''$
 R = 683.00'
 T = 58.36'
 L = 116.43'
 E = 2.49'
 e = N/C
 T.R. = N/A
 S.E. RUN = N/A
 PC STA = 328+01.25
 PT STA = 329+17.69

CURVE M-1
 PI STA 392+79.68
 $\Delta = 8^\circ 53' 44''$ (RT)
 D = $13^\circ 28' 53''$
 R = 425.00'
 T = 33.06'
 L = 65.98'
 E = 1.28'
 e = N.C.
 T.R. = N/A
 S.E. RUN = N/A
 PC STA 392+46.62
 PT STA 393+12.60

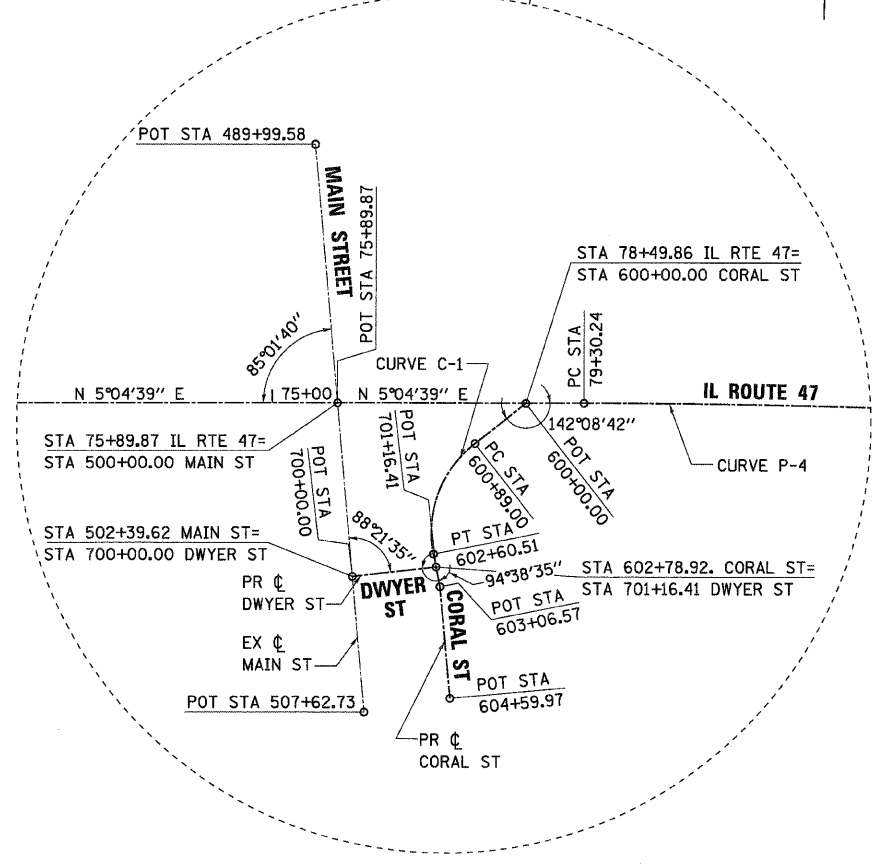
CURVE M-2
 PI STA 393+60.87
 $\Delta = 12^\circ 14' 38''$ (LT)
 D = $12^\circ 43' 57''$
 R = 450.00'
 T = 48.27'
 L = 96.16'
 E = 2.58'
 e = N.C.
 T.R. = N/A
 S.E. RUN = N/A
 PC STA 393+12.60
 PT STA 394+08.77

CURVE M-3
 PI STA = 403+45.57
 $\Delta = 36^\circ 46' 00''$ (LT)
 D = $21^\circ 37' 16''$
 R = 265.00'
 T = 88.07'
 L = 170.05'
 E = 14.25'
 e = R/C
 T.R. = 54.72'
 S.E. RUN = 54.72'
 PC STA = 402+57.50
 PT STA = 404+27.55

CURVE C-1
 PI STA = 601+84.73
 $\Delta = 63^\circ 24' 01''$ (LT)
 D = $36^\circ 57' 54''$
 R = 155.00'
 T = 95.73'
 L = 171.51'
 E = 27.18'
 e = R/C
 T.R. = N/A
 S.E. RUN = N/A
 PC STA = 600+89.00
 PT STA = 602+60.51

CURVE D-1
 PI STA = 301+70.07
 $\Delta = 45^\circ 45' 59''$ (LT)
 D = $22^\circ 55' 06''$
 R = 250.00'
 T = 105.52'
 L = 199.69'
 E = 21.36'
 e = N/C
 T.R. = N/A
 S.E. RUN = N/A
 PC STA = 300+64.55
 PT STA = 302+64.24

ILLINOIS ROUTE 47 SUPERELEVATION TRANSITIONS			
SOUTHBOUND LANES		NORTHBOUND LANES	
STATION	CROSS SLOPE	STATION	CROSS SLOPE
CURVE P-1			
12+78.79	-2.0%		
13+74.79	0.0%	14+70.79	-2.0%
15+04.39	2.7%	15+04.39	-2.7%
24+62.08	2.7%	24+62.08	-2.7%
CURVE P-2			
24+71.68	2.9%	24+71.68	-2.9%
30+01.91	2.9%	30+60.95	-2.9%
32+43.93	0.0%	32+47.56	0.0%
CURVE P-3			
32+43.93	0.0%	32+47.56	0.0%
34+94.29	-3.0%	34+40.61	3.0%
45+08.21	-3.0%	45+08.21	3.0%
45+44.21	-2.0%	46+16.21	0.0%
		46+88.21	-2.0%



PLOT DATE = Thursday, December 17, 2009
 FILE NAME = S:\11-CADD\11-ent\110225_align_ties.dwg
 PLOT SCALE = 2500
 USER NAME = 3590



REVISIONS	
NAME	DATE
ADDENDUM A	12/21/09

ILLINOIS DEPARTMENT OF TRANSPORTATION
ILLINOIS ROUTE 47
 ALIGNMENT, TIES AND BENCHMARKS
 SHEET 1 OF 3

SCALE: VERT. 1"=250'
 HORIZ. 1"=250'
 DATE: 8/5/2009

DRAWN BY: E.D.
 CHECKED BY: A.A.C.