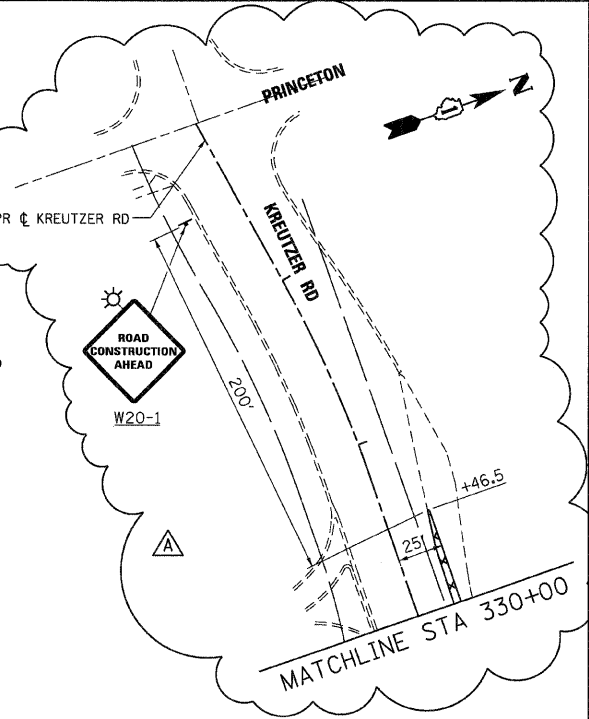
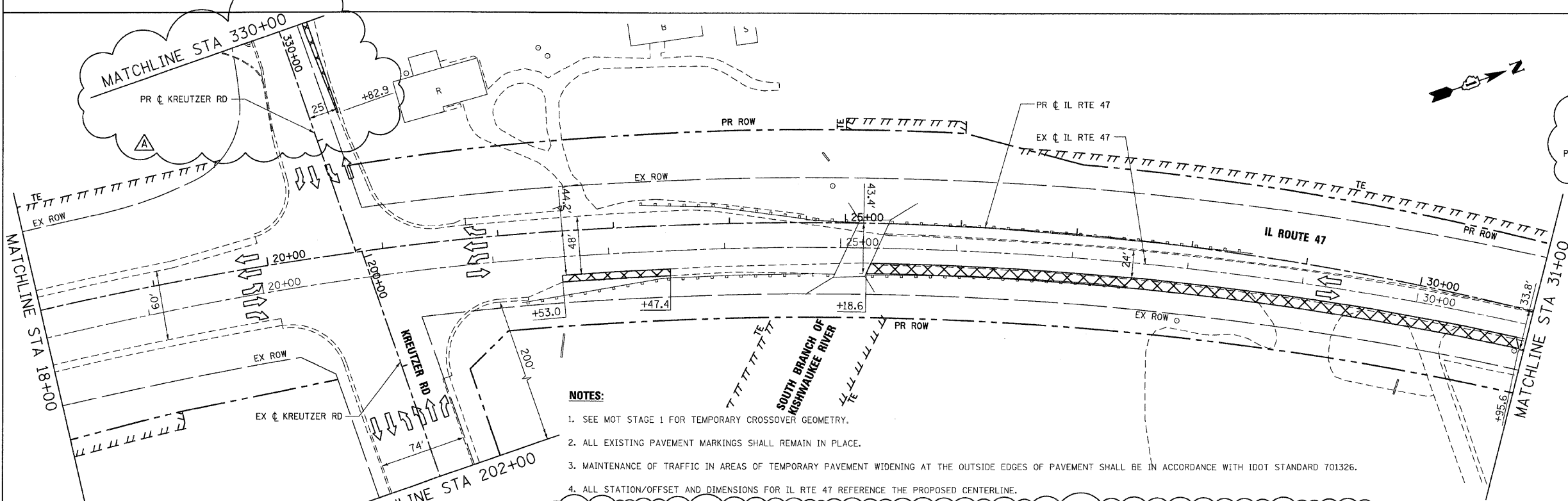
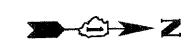
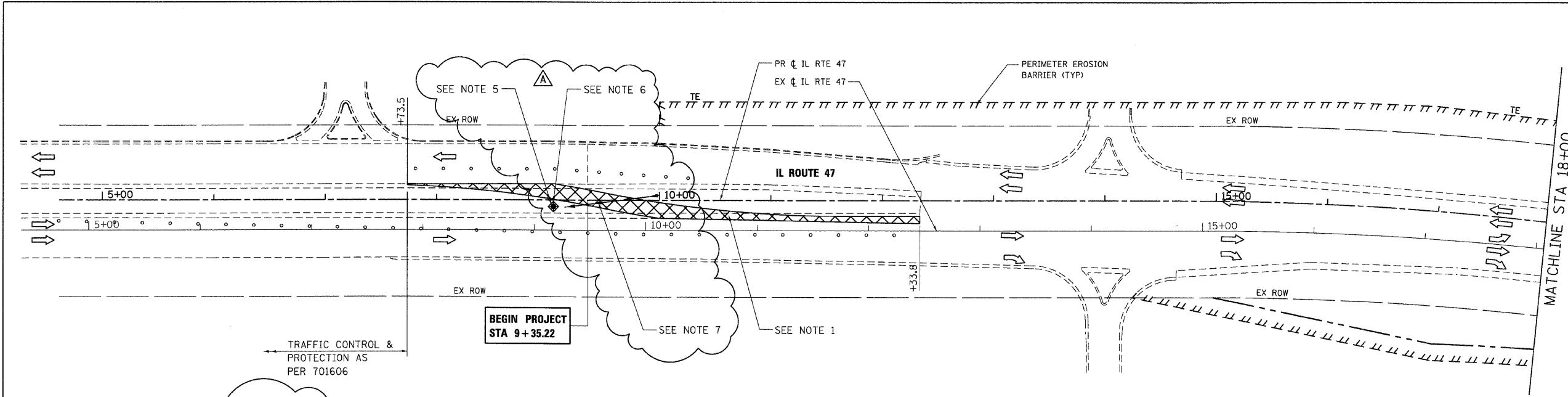


F.A.P. RTE.	SECTION	COUNTY	TOTAL SHEETS	SHEET NO.
326		McHENRY	502	60
STA. 9+35.22		TO STA. 142+08.53		
FED. ROAD DIST. NO.		ILLINOIS FED. AID PROJECT		
• (105X & 106) WRS-2				



NOTES:

1. SEE MOT STAGE 1 FOR TEMPORARY CROSSOVER GEOMETRY.
2. ALL EXISTING PAVEMENT MARKINGS SHALL REMAIN IN PLACE.
3. MAINTENANCE OF TRAFFIC IN AREAS OF TEMPORARY PAVEMENT WIDENING AT THE OUTSIDE EDGES OF PAVEMENT SHALL BE IN ACCORDANCE WITH IDOT STANDARD 701326.
4. ALL STATION/OFFSET AND DIMENSIONS FOR IL RTE 47 REFERENCE THE PROPOSED CENTERLINE.
5. INSTALL TEMPORARY CATCH BASIN AT STA 9+04.79, 5.5' RT, RIM 889.34, INV 884.80. CONNECT TEMPORARY CATCH BASIN TO EXISTING INLET AT STA 9+04.79, 0.2' LT, WITH TEMPORARY STORM SEWER 12". SEE SPECIAL PROVISIONS FOR FURTHER DETAIL.
6. FRAME AND GRATE OF EXISTING INLET AT STA 9+04.79, 0.2 LT TO BE REMOVED AND REPLACED WITH STEEL PLATED ANCHORED TO INLET PRIOR TO INSTALLING TEMPORARY PAVEMENT FOR CROSSOVER AS DIRECTED BY THE ENGINEER. SEE SPECIAL PROVISIONS FOR FURTHER DETAIL.
7. INSTALL PIPE CULVERT, CLASS A, TYPE 1, 12" (TEMPORARY) AT STA 9+15.00, 6.5' RT, INV 889.41 TO STA 10+00.00, 4.5' LT, INV 889.93.



PLOT DATE = Thursday, December 17, 2009
 FILE NAME = S:\11-CADD\01-shs\1062.mxd,pre-sh-101.dgn
 PLOT SCALE = 50%
 USER NAME = 3590

REVISIONS	
NAME	DATE
ADDENDUM A	12/21/09

ILLINOIS DEPARTMENT OF TRANSPORTATION
ILLINOIS ROUTE 47
 MAINTENANCE OF TRAFFIC - PRE-STAGE
 SHEET 1 OF 8

SCALE: VERT. 1"=50'
 HORIZ. DATE: 8/5/2009

DRAWN BY: E.D.
 CHECKED BY: A.A.C.