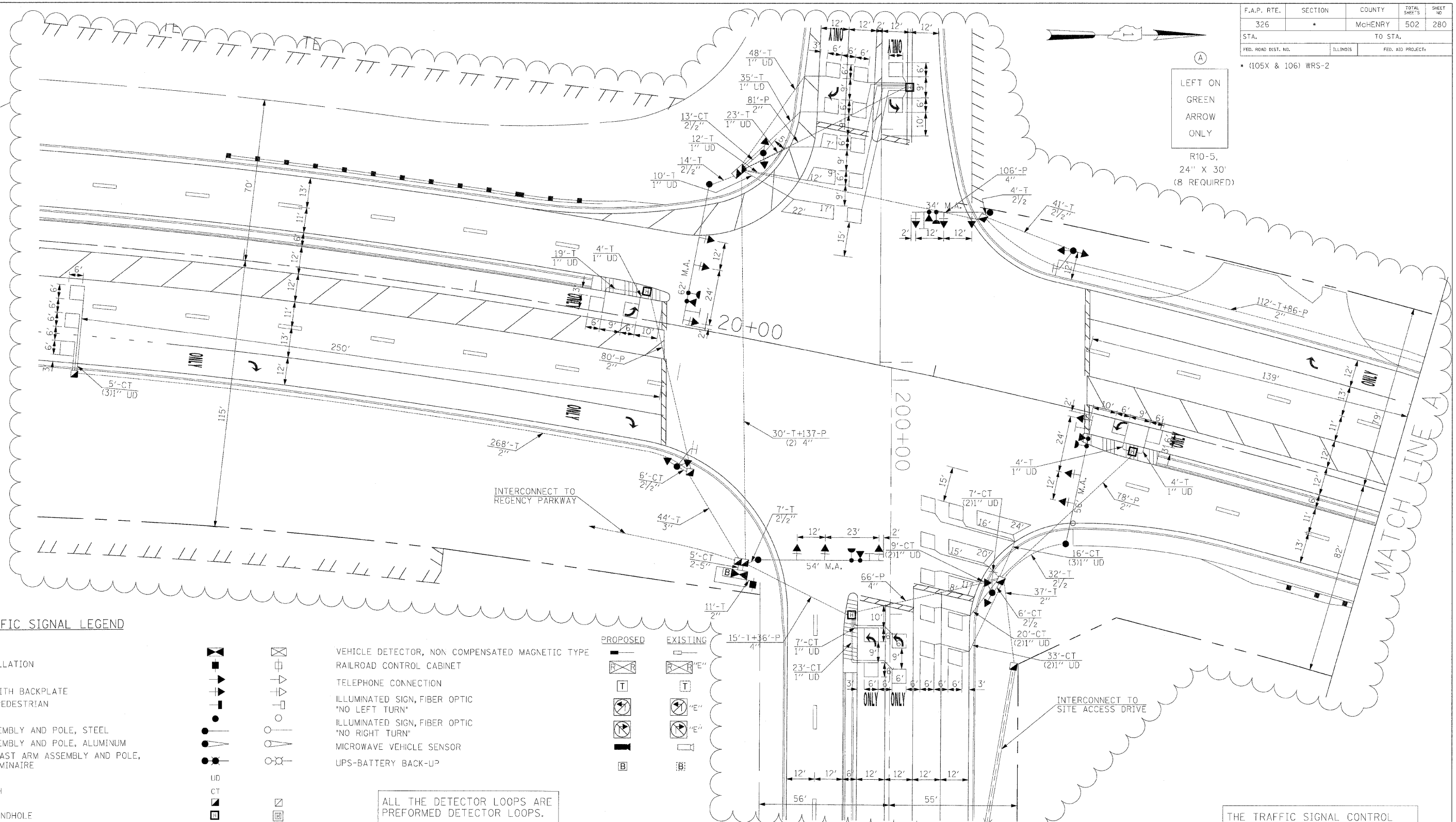


F.A.P. RTE.	SECTION	COUNTY	TOTAL SHEETS	SHEET NO.
326	*	McHENRY	502	280
STA.	TO STA.			
FED. ROAD DIST. NO.	ILLINOIS	FED. AID PROJECT:		

• (105X & 106) WRS-2

LEFT ON
GREEN
ARROW
ONLY

R10-5,
24" X 30"
(8 REQUIRED)



TRAFFIC SIGNAL LEGEND

- | | | | |
|--|--|---|--|
| CONTROLLER SERVICE INSTALLATION | | VEHICLE DETECTOR, NON COMPENSATED MAGNETIC TYPE | |
| SIGNAL HEAD | | RAILROAD CONTROL CABINET | |
| SIGNAL HEAD WITH BACKPLATE | | TELEPHONE CONNECTION | |
| SIGNAL HEAD, PEDESTRIAN | | ILLUMINATED SIGN, FIBER OPTIC 'NO LEFT TURN' | |
| SIGNAL POST | | ILLUMINATED SIGN, FIBER OPTIC 'NO RIGHT TURN' | |
| MAST ARM ASSEMBLY AND POLE, STEEL | | MICROWAVE VEHICLE SENSOR | |
| MAST ARM ASSEMBLY AND POLE, ALUMINUM | | UPS-BATTERY BACK-UP | |
| COMBINATION MAST ARM ASSEMBLY AND POLE, STEEL WITH LUMINAIRE | | | |
| UNIT DUCT | | | |
| COMMON TRENCH | | | |
| HANDHOLE | | | |
| HEAVY DUTY HANDHOLE | | | |
| DOUBLE HANDHOLE | | | |
| GALVANIZED STEEL CONDUIT IN TRENCH OR PUSHED | | | |
| PEDESTRIAN PUSHBUTTON DETECTOR | | | |
| DETECTOR LOOP | | | |
| CAST IRON JUNCTION BOX | | | |
| EMERGENCY VEHICLE SYSTEM DETECTOR | | | |
| CONFIRMATION BEACON | | | |
| SIGNAL HEAD, OPTICALLY PROGRAMMED | | | |
| CONDUIT SPLICE | | | |
| WOOD POLE | | | |
| RACEWAY FOR MAGNETIC DETECTOR, TYPE I OR TYPE II | | | |

ALL THE DETECTOR LOOPS ARE PREFORMED DETECTOR LOOPS.

RESTORATION OF WORK AREA. RESTORATION OF THE TRAFFIC SIGNAL WORK AREA SHALL BE INCIDENTAL TO THE RELATED PAY ITEMS SUCH AS FOUNDATION, CONDUIT, HANDHOLE, TRENCH, AND BACKFILL, ETC., AND NO EXTRA COMPENSATION SHALL BE ALLOWED. ALL ROADWAY SURFACES SUCH AS SHOULDERS, MEDIANS, SIDEWALKS, PAVEMENT, ETC. SHALL BE REPLACED IN KIND. ALL DAMAGE TO MOWED LAWNS SHALL BE REPLACED WITH AN APPROVED SOD, AND ALL DAMAGE TO UNMOWED FIELDS SHALL BE SEEDING IN ACCORDANCE WITH STANDARD SPECIFICATIONS 252 AND 250 RESPECTIVELY.

NOTE 1:
THE CONTRACTOR SHALL CONSTRUCT THE HANDHOLE IN SUCH A MANNER THAT IT WILL INTERCEPT THE EXISTING INTERCONNECT CONDUIT. PRIOR TO CUTTING THE EXISTING CONDUIT IN THE HANDHOLE, THE INTERCONNECT AND TRACER CABLES SHALL BE DISCONNECTED AT THE CONTROLLER AT THE INTERSECTION OF ILLINOIS ROUTE 47 AND KREUTZER ROAD AND PULLED BACK TO THE EAST OF THE HANDHOLE. THE CABLES SHALL, THEN BE CONNECTED BACK INTO THE CONTROLLER. THE TIME DURATION OF THE INTERRUPTION IN THE SERVICE SHALL BE KEPT TO A MINIMUM.

THE TRAFFIC SIGNAL CONTROL EQUIPMENT FOR THIS PROJECT SHALL BE "EAGLE" TO MATCH THE EXISTING ADJACENT SYSTEM.

REVISIONS	
NAME	DATE
ADDENDUM A	12/21/2009

ILLINOIS DEPARTMENT OF TRANSPORTATION

TRAFFIC SIGNAL INSTALLATION
ILLINOIS ROUTE 47 AT KREUTZER ROAD
(SHEET 1 OF 2)

SCALE: 1"=20'
DATE: APRIL 17, 2009

DRAWN BY: MAA
DESIGNED BY: PKG/RRM
CHECKED BY: PKG/RRM

GA GANDHI AND ASSOCIATES, INC.
ENGINEERS AND PLANNERS
8055 N. NORTHWEST HIGHWAY
SUITE 306
CHICAGO, ILLINOIS 60631 TEL: (773) 774-5910