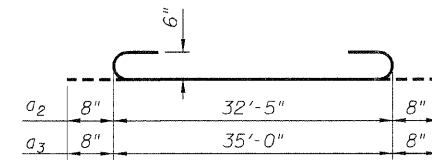


STATE OF ILLINOIS
DEPARTMENT OF TRANSPORTATION

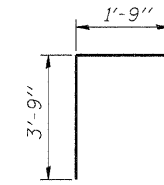
ROUTE NO.	SECTION	COUNTY	TOTAL SHEETS	SHEET NO.
FAP 326	★	McHENRY	502	337
FED. ROAD DIST. NO. 1	ILLINOIS	FED. AID PROJECT-	326	

SHEET NO. 8
13 SHEETS

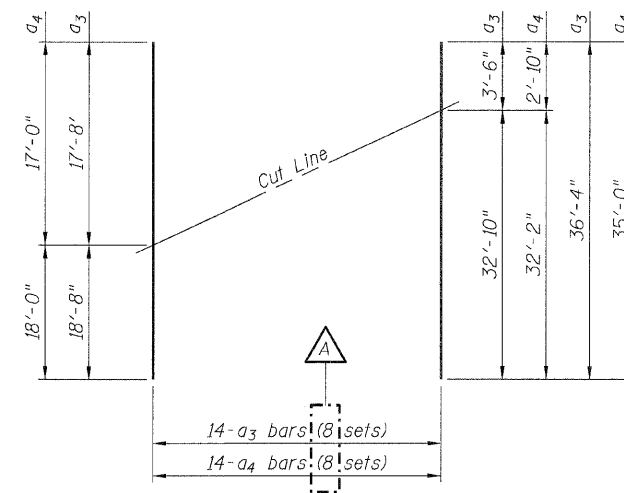
Contract No. 62882
★ (105X & 106)WRS-2



BARS a2 & a3



BAR d1



FIELD CUTTING DIAGRAM

Order bars full length, cut to fit as shown and place at one end of the dimension line shown on the plan. Use remainder of bars at opposite end of the dimension line.

BILL OF MATERIAL

Bar	No.	Size	Length	Shape
a1	424	#7	32'-5"	—
a2	424	#6	33'-9"	⊂
a3	112	#6	36'-4"	⊂
a4	112	#7	35'-0"	—
d1	86	#4	5'-6"	└┘
h1	444	#5	22'-1"	—
h2	444	#5	25'-6"	—
h3	4	#6	35'-3"	—
h4	14	#6	35'-10"	—
h5	8	#4	6'-0"	—
h6	12	#6	35'-8"	—
v1	1092	#4	2'-8"	—
v2	1092	#4	8'-0"	—
v3	8	#4	8'-9"	—
v4	8	#4	5'-10"	—
Reinforcement Bars		Pound	95,560	
Bar Splicers		Each	148	
Concrete Box Culverts		Cu. Yd.	381.6	
Geotextile Retaining Wall		Sq. Ft.	161	

DESIGNED	- NDR
CHECKED	- DSE
DRAWN	- RTT
CHECKED	- DSE
DATE	- Aug. 5, 2009

Stanley Consultants INC.
6501 West Higgins Road, Suite 730, Chicago, Illinois 60631-2801
www.stanleyconsultants.com
Illinois Firm Registration No.: 1184-001638

CULVERT DETAILS
IL ROUTE 47 OVER
S. BRANCH KISHWAUKEE RIVER
F.A.P. 326 - SECT. (105X & 106)WRS-2
McHENRY COUNTY
STATION 25+24.62
STRUCTURE NO. 056-0085