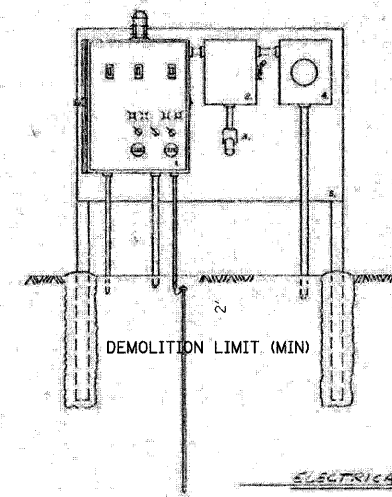
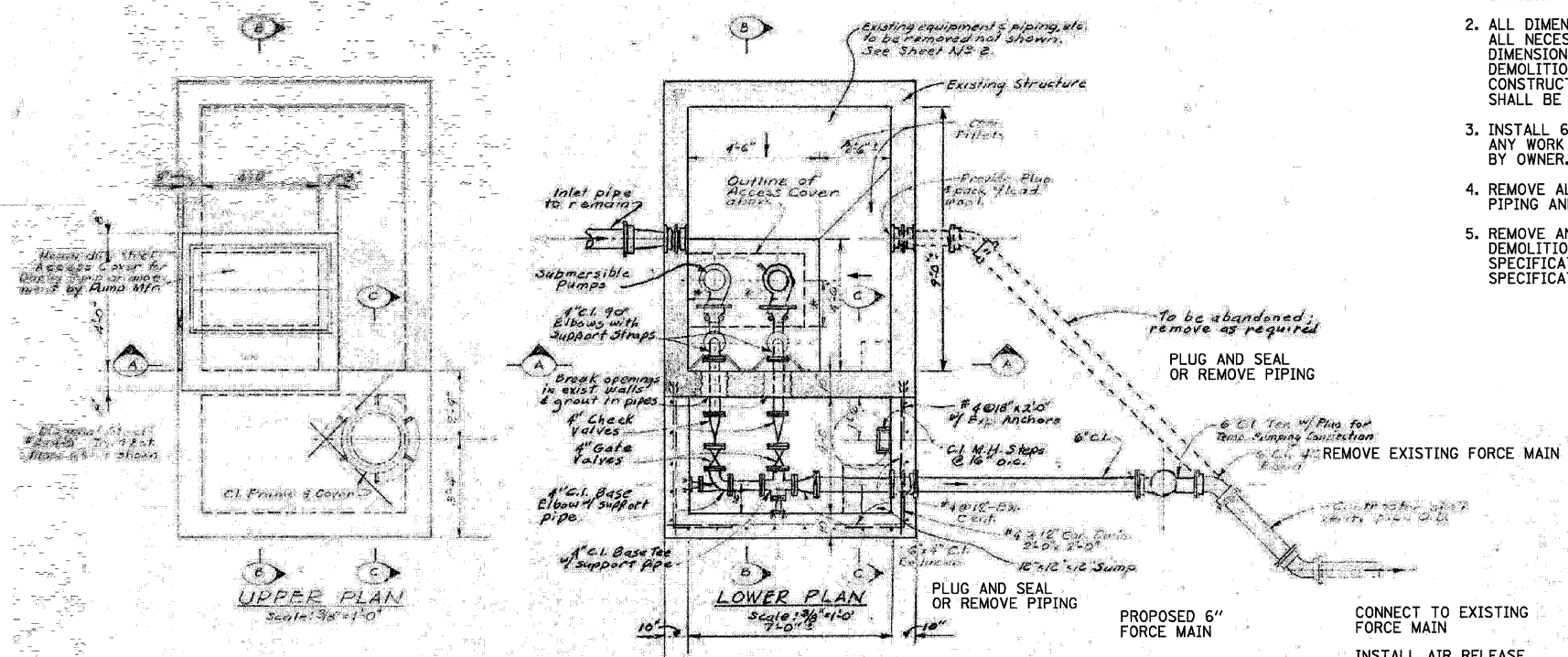


F.A.P. RTE.	SECTION	COUNTY	TOTAL SHEETS	SHEET NO.
326	*	McHENRY	502	205

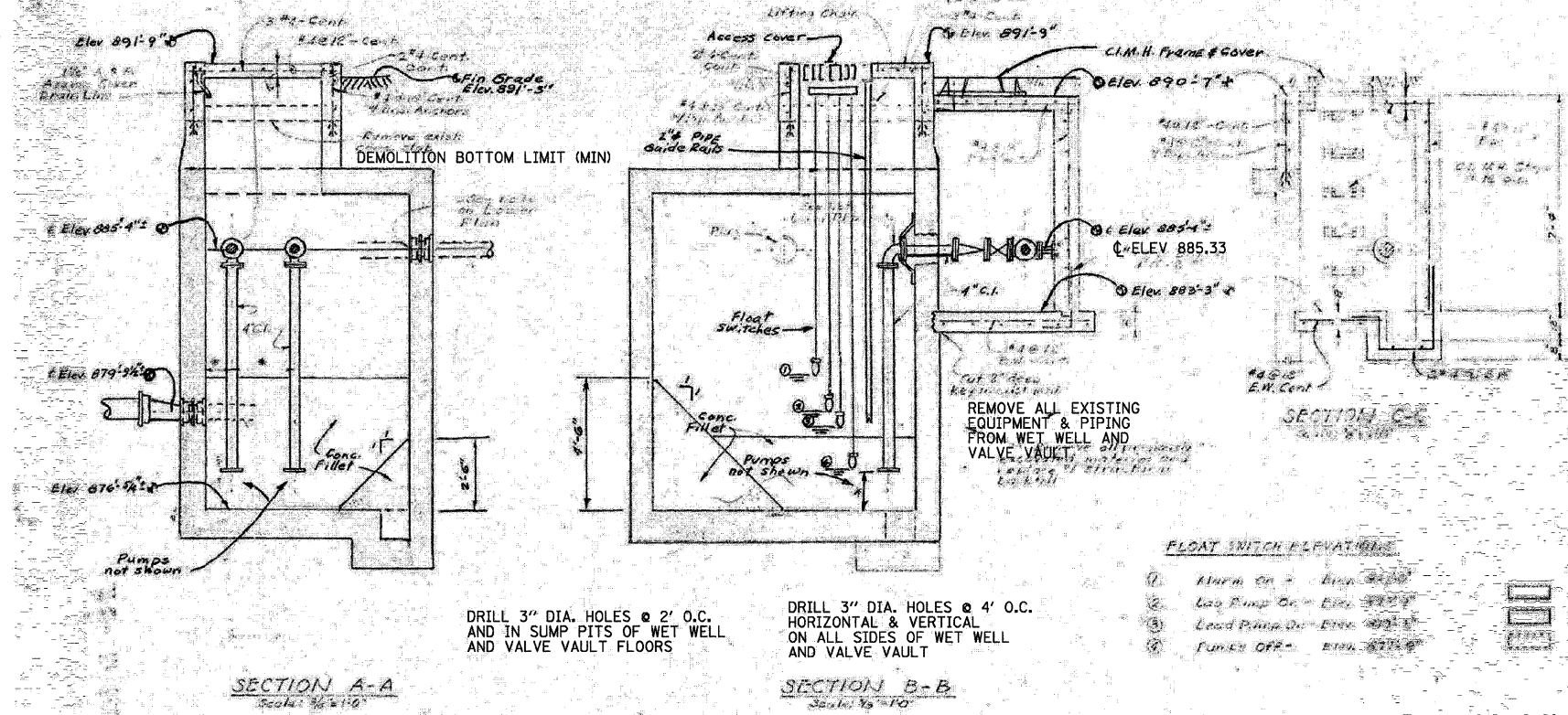
STA. 9+35.22 TO STA.142+08.53
 FED. ROAD DIST. NO. ILLINOIS FED. AID PROJECT
 * (105X & 106) WRS-2

NOTES:

1. THIS LIFT STATION DEMOLITION AND FORCE MAIN CONNECTION PLAN IS BASED ON RECORD DRAWINGS OBTAINED FROM VILLAGE OF HUNTLEY, ENTITLED, "MAIN STREET PUMPING STATION REMODEL PLANS, BY BAXTER AND WOODMAN, INC., 10/3/1977.
2. ALL DIMENSIONS OF EXISTING CONSTRUCTION ARE APPROXIMATE. CONTRACTOR SHALL MAKE ALL NECESSARY FIELD MEASUREMENTS OF EXISTING STRUCTURES AND EQUIPMENT TO VERIFY DIMENSIONS SHOWN ON DRAWINGS AND TO PROVIDE DIMENSIONS NOT SHOWN, PRIOR TO DEMOLITION AND FORCE MAIN CONNECTION. COSTS FOR MODIFICATIONS OF NEW CONSTRUCTION, DUE TO LACK OF CONFIRMATION OF DIMENSIONS BY FIELD MEASUREMENTS SHALL BE BOURNE BY CONTRACTOR.
3. INSTALL 6' TALL TEMPORARY CHAIN LINK FENCE AROUND WORK ZONE PRIOR TO BEGINNING ANY WORK AT THE SITE. REMOVE FENCE AFTER WORK HAS BEEN COMPLETED AND APPROVED BY OWNER. THIS WORK INCLUDED IN THE COST OF LIFT STATION.
4. REMOVE ALL EQUIPMENT AND APPURTENANCES FROM LIFT STATION. PLUG AND SEAL ALL PIPING AND CONDUITS ENTERING AND LEAVING LIFT STATION.
5. REMOVE AND DISPOSE OF WET WELL AND VALVE VAULT TO DESIGNATED BOTTOM OF DEMOLITION EXCAVATION. DRILL HOLES AND BACKFILL EXCAVATED AREA PER STANDARD SPECIFICATIONS. FILL INSIDE OF STRUCTURES WITH FA 6 PER STANDARD SPECIFICATIONS.



1. Pump Control Panel - See Specifications.
 2. Manual Transfer Switch - 3 Pole, 400 volt, non-fusible, NEMA 3R Enclosure.
 3. Portable Generator Receptacle - Supplied by others.
 4. Corom. Ed. Metering.
 5. 4' x 2' x 1' Thick marine plywood mounting panel supported by 3\"/>
- REMOVE ALL EXISTING ELECTRICAL & CONTROLS EQUIPMENT; ABANDON EXISTING ELECTRICAL SUPPLY AS DIRECTED BY COM ED & OWNER



DRILL 3" DIA. HOLES @ 2' O.C. AND IN SUMP PITS OF WET WELL AND VALVE VAULT FLOORS

DRILL 3" DIA. HOLES @ 4' O.C. HORIZONTAL & VERTICAL ON ALL SIDES OF WET WELL AND VALVE VAULT

- FLOAT SWITCH ELEVATIONS**
1. Alarm On - Elev. 885.33
 2. Lag Pump On - Elev. 885.33
 3. Load Pump On - Elev. 885.33
 4. Pump Off - Elev. 885.33
- LEGEND**
- Proposed structure and equipment
 - Existing Structure to remain
 - Existing Structure or equipment or piping to be abandoned or removed

* Refer to Pump Mfr for these dimensions

REVISIONS	
NAME	DATE

ILLINOIS DEPARTMENT OF TRANSPORTATION
ILLINOIS ROUTE 47
LIFT STATION DEMOLITION AND
FORCE MAIN CONNECTION PLAN



SCALE: VERT. NO SCALE
 HORIZ. DATE: 8/5/2009
 DRAWN BY: E.D.
 CHECKED BY: Z.M.

10/27/2009

Plot Date = Wednesday, October 14, 2009
 File Name = S:\11-CADD\01-hts\105-pump_sta.dwg
 Plot Scale = 2881
 User Name = 3876