

**STATE OF ILLINOIS
DEPARTMENT OF TRANSPORTATION
DIVISION OF HIGHWAYS**

**PROPOSED
HIGHWAY PLANS**

**FAI ROUTE 55 (I-55) OVER THE KANKAKEE RIVER
SECTION 88(B&B-1)BR
BRIDGE REHABILITATION
WILL COUNTY
PROJECT: ESP-055-6(238)241
C-91-166-05**

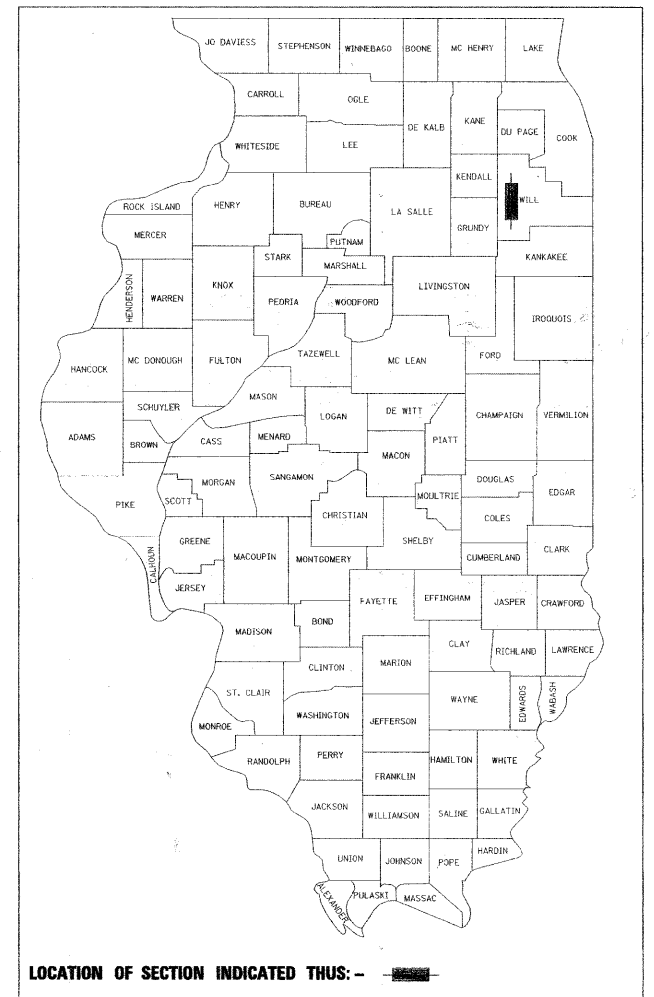
FOR INDEX OF SHEETS, SEE SHEET NO. 2

IMPROVEMENTS LOCATED WITHIN
THE CITY OF WILMINGTON, IL

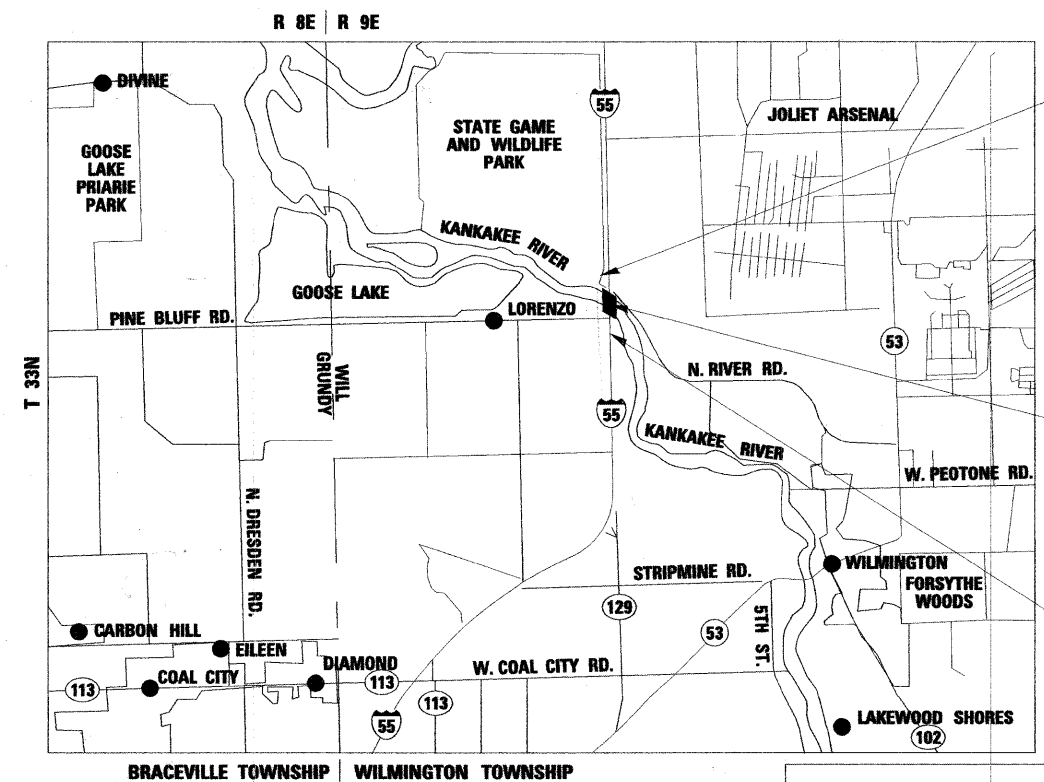
F.A. RTE.	SECTION	COUNTY	TOTAL SHEETS	SHEET NO.
55	88 (B&B) BR	WILL	72	1
		ILLINOIS	CONTRACT NO. 62930	

*72+6 = 78

D-91-166-05



LOCATION OF SECTION INDICATED THUS: -



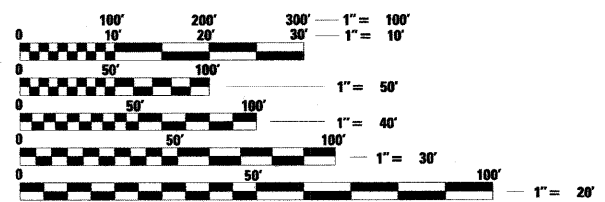
PROJECT ENDS
STA. 90 + 70.00

LOCATION OF PROJECT
FAI ROUTE 55 BRIDGE
OVER KANKAKEE RIVER
S.N. 099-0001 (NB)
S.N. 099-0002 (SB)

PROJECT BEGINS
STA. 27 + 50.00

TRAFFIC DATA

FUNCTIONAL CLASSIFICATION - INTERSTATE, CLASS I TRUCK ROUTE
AT NEW RIVER RD. 2005 ADT = 55,000
AT LORENZO RD. 2005 ADT = 40,900
INTERSTATE 55 POSTED SPEED LIMIT = 65 MPH



FULL SIZE PLANS HAVE BEEN PREPARED USING STANDARD
ENGINEERING SCALES. REDUCED SIZED PLANS WILL NOT
CONFORM TO STANDARD SCALES. IN MAKING MEASUREMENTS
ON REDUCED PLANS, THE ABOVE SCALES MAY BE USED.

J.U.L.I.E.
JOINT UTILITY LOCATION INFORMATION FOR EXCAVATION
1-800-892-0123
OR 811

**LOCATION MAP
(NTS)**
GROSS LENGTH = NET LENGTH = 6320 FEET = 1.20 MILES

PROJECT ENGINEER: MICHELLE AQUINO (847) 705-4606
PROJECT MANAGER: RAJENDRA SHAH (847) 705-4555

CONTRACT NO. 62930

FINAL PLANS

rjngroup
Excellence through Ownership
200 West Front Street
Wheaton, IL 60187
License # 184-000813

STATE OF ILLINOIS
DEPARTMENT OF TRANSPORTATION
DIVISION OF HIGHWAYS

SUBMITTED *June 24 2009*
Chris O'Keefe
DEPUTY DIRECTOR OF HIGHWAYS, REGION ENGINEER

December 4, 2009
Charles G. Ingersoll
ENGINEER OF DESIGN AND ENVIRONMENT

December 4, 2009
Christine M. Reed
DIRECTOR OF HIGHWAYS, CHIEF ENGINEER

 MARY COOMBE BLOXDORF DISCIPLINE: STRUCTURAL ENGINEER LICENSE NO. 081-004859 LICENSE EXPIRES 11/30/2010	 CHAD M. JANSON DISCIPLINE - CIVIL ENGINEER LICENSE NO. 062-053980 LICENSE EXPIRES 11/30/2009
---	---

**PRINTED BY THE AUTHORITY
OF THE STATE OF ILLINOIS**

INDEX OF SHEETS

SHEET NO.	SHEET TITLE
1	COVER SHEET
2	INDEX OF SHEETS & STANDARDS
3	GENERAL NOTES
4-4A	SUMMARY OF QUANTITIES
5	ROADWAY TYPICAL SECTIONS
5A	RAMP TYPICAL SECTIONS
6	CROSSOVER TYPICAL SECTIONS
7	ALIGNMENT & TIES
8-9	DETOUR PLAN
10-12	TRAFFIC CONTROL CONSTRUCTION STAGING NOTES & DETAILS
13-14	TRAFFIC CONTROL PLAN - STAGE II
15-16	TRAFFIC CONTROL PLAN - STAGE III
17-21	PLAN & PROFILE
21A	N. RIVER ROAD EXIT RAMPS - PLAN
22-23	DRAINAGE PLAN & PROFILE
24	EROSION CONTROL PLAN
25-26	PAVEMENT ELEVATION DETAILS
27-28	PAVEMENT MARKING PLANS
29-47	BRIDGE PLANS-SN 099-0001 (NB)
48-56	BRIDGE PLANS-SN 099-0002 (SB)
57-64	CROSS-SECTIONS
65	STORM SEWER CONNECTION TO EXISTING SEWERS (BD-08)
66	BUTT JOINTS AND HMA TAPER (BD-32)
67	ENTRANCE AND EXIT RAMP CLOSURE DETAILS (TC-08)
68	FREEWAY SINGLE AND MULTI LANE WEAVE (TC-09)
69	RAISED REFLECTIVE PAVEMENT MARKERS (SNOW PLOW RESISTANT) (TC-11)
70-71	MULTI-LANE FREEWAY PAVEMENT MARKING (2 SHEETS) (TC-12)
72	ARTERIAL ROAD INFORMATION SIGN (TC-22)
72A	PAVEMENT PATCHING FOR HMA SURFACED PAVEMENT (BD-22)
72B	TRAFFIC CLOSURE FOR SHOULDER CLOSURES AND PARTIAL RAMP CLOSURES (TC-17)
72C	SIGNING FOR FLAGGING OPERATIONS AT WORK ZONE OPENINGS (TC-18)

HIGHWAY STANDARDS

STANDARD NO.	STANDARD TITLE
000001-05	STANDARD SYMBOLS, ABBREVIATIONS AND PATTERNS
280001-04	TEMPORARY EROSION CONTROL SYSTEMS
482001-02	HMA SHOULDER ADJACENT TO FLEXIBLE PAVEMENT
482011-03	HMA SHOULDER STRIPS/SHOULDERS WITH RESURFACING
515001-03	NAME PLATE FOR BRIDGES
601101-01	CONCRETE HEADWALL FOR PIPE DRAIN
606401-01	PAVED DITCH
630001-08	STEEL PLATE BEAM GUARDRAIL
630301-05	TRAFFIC BARRIER TERMINAL, TYPE 5 & 5A
635006-03	REFLECTOR AND TERMINAL MARKER PLACEMENT
635011-02	REFLECTOR MARKER AND MOUNTING DETAILS
701101-02	OFF-ROAD OPERATIONS, MULTILANE
701321-10	LANE CLOSURE, MULTI-LANE DIVIDED WITH CROSS OVER AND BARRIER
701400-03	APPROACH TO LANE CLOSURE, FREEWAY/EXPRESSWAY
701401-05	LANE CLOSURE, FREEWAY/EXPRESSWAY
701411-05	LANE CLOSURE, MULTI-LANE AT ENTRANCE OR EXIT RAMP, FOR SPEEDS >= 45 MPH
701416-06	LANE CLOSURE, FREEWAY/EXPRESSWAY, WITH CROSSOVER AND BARRIER
701901-01	TRAFFIC CONTROL DEVICES
704001-05	TEMPORARY CONCRETE BARRIER
720001-01	SIGN PANEL MOUNTING DETAILS
720006-02	SIGN PANEL ERECTION DETAILS
780001-02	TYPICAL PAVEMENT MARKINGS
781001-03	TYPICAL APPLICATIONS RAISED REFLECTIVE PAVEMENT MARKERS
442201-03	CLASS C & D PATCHES
635001-01	DELINEATORS
642001-01	SHOULDER RUMBLE STRIPS

GENERAL NOTES – ROADWAY

- SAW CUTTING OF PAVEMENTS, SHOULDERS, ETC. SHALL BE FULL DEPTH AND SHALL RESULT IN A CLEAN, STRAIGHT EDGE ON THE PORTION REMAINING. ALL SAW CUTTING SHALL BE CONSIDERED INCLUDED IN THE COST OF THE ITEM REMOVED.
- USE NO. 8 EPOXY-COATED TIE BARS (OR DOWEL BARS) CONFORMING TO ARTICLE 1003.10(B)(2) OF THE STANDARD SPECIFICATIONS FOR LONGITUDINAL CONSTRUCTION JOINT GROUTED-IN-PLACE TIE BAR AS SHOWN ON STATE STANDARD 420001 AND FOR TYING PORTLAND CEMENT CONCRETE PAVEMENT TO EXISTING CONCRETE PAVEMENT AS SHOWN ON THE PLANS. THE TIE BARS WILL NOT BE PAID FOR SEPARATELY BUT SHALL BE INCLUDED IN THE COST OF THE PAVEMENT ITEMS BEING CONSTRUCTED.
- THE THICKNESS OF BITUMINOUS MIXTURES SHOWN ON THE PLANS IS THE NOMINAL THICKNESS. DEVIATIONS FROM THE NOMINAL THICKNESS WILL BE PERMITTED WHEN SUCH DEVIATIONS OCCUR DUE TO IRREGULARITIES IN THE BASE ON WHICH THE BITUMINOUS MIXTURE IS PLACED.
- EXCEPT AS NOTED ON THE PLANS, PAVEMENT GRADES SHOWN ARE AT THE TOP OF PAVEMENT SURFACES.
- THE ENGINEER SHALL BE THE SOLE JUDGE CONCERNING CURING TIME FOR THE VARIOUS PAVEMENT LIFTS.

GENERAL NOTES – TRAFFIC CONTROL & PROTECTION

- STAGING PROCEDURES PRESENTED ARE THE SUGGESTED SEQUENCE OF OPERATIONS. AT HIS OPTION, THE CONTRACTOR MAY SUBMIT AN ALTERNATIVE STAGING PROPOSAL TO THE ENGINEER FOR HIS APPROVAL.
- TRAFFIC CONDITIONS, ACCIDENTS AND OTHER UNFORESEEN EMERGENCY CONDITIONS MAY REQUIRE THE ENGINEER TO RESTRICT, MODIFY OR REMOVE LANE CLOSURES OF CHANNELIZATION SHOWN IN THE PLANS. THE CONTRACTOR SHALL MAKE THE NECESSARY ADJUSTMENTS AS DIRECTED BY THE ENGINEER WITHOUT DELAY. THE CONTRACTOR SHALL RESPOND TO ANY REQUEST MADE BY THE ENGINEER FOR CORRECTION WITHIN TWO HOURS FROM THE TIME OF NOTIFICATION.
- ALL TEMPORARY PAVEMENT MARKINGS PROPOSED WITHIN THE WORK AREA SHALL BE COMPLETED PRIOR TO THE CONSTRUCTION PHASE CHANGE.
- BARRICADES: THE CONTRACTOR SHALL PROVIDE AND INSTALL TWO (2) WEIGHTED SAND BAGS ON EACH TYPE III BARRICADE USED - ONE (1) WEIGHTED SAND BAG ACROSS EACH BOTTOM RAIL.
- THE RESIDENT ENGINEER SHALL CONTACT MS. CORA MATHIS, AREA TRAFFIC ENGINEER AT (815) 485-6475, A MINIMUM OF TWO WEEKS PRIOR TO PLACEMENT OF PERMANENT PAVEMENT MARKINGS.
- THE MEDIAN CROSSOVERS SHALL BE CONSTRUCTED WITH DAILY LANE CLOSURES PER DISTRICT 1 STANDARDS.
- WHEN WORKERS ARE PRESENT, CONSTRUCTION SPEED LIMIT AND FLAGGER SIGNS SHALL BE PLACED PER DISTRICT 1 STANDARDS.
- VARIABLE MESSAGE SIGNS SHALL BE INSTALLED AS DIRECTED BY THE ENGINEER.
- TEMPORARY MOVEABLE CONCRETE BARRIER WALL SHALL BE LEASED BY IDOT FROM BARRIER SYSTEMS INC.
- THE CONTRACTOR SHALL REPLACE PRISMATIC BARRIER REFLECTORS ON THE NORTHBOUND I-55 BRIDGE STRUCTURE AS INDICATED ON THE TRAFFIC CONTROL PLAN. THIS WORK SHALL BE PAID FOR AT THE CONTRACT UNIT PRICE PER EACH FOR MONODIRECTIONAL PRISMATIC BARRIER REFLECTOR.
- REMOVAL OF EXISTING PAVEMENT MARKINGS SHALL BE PAID FOR AS PAVEMENT MARKING REMOVAL. REMOVAL OF TEMPORARY PAVEMENT MARKING TAPE SHALL BE PAID FOR AS WORK ZONE PAVEMENT MARKING REMOVAL.

GENERAL NOTES – DRAINAGE & UTILITIES

- BEFORE STARTING ANY EXCAVATION, THE CONTRACTOR SHALL CALL J.U.L.I.E. AT 1-800-892-0123 FOR FIELD LOCATIONS OF BURIED UTILITIES. (48 HOUR NOTIFICATION REQUIRED).
- THE CONTRACTOR SHALL COORDINATE CONSTRUCTION ACTIVITIES WITH UTILITY COMPANIES AND THE DEPARTMENT OF TRANSPORTATION

GENERAL NOTES – LIGHTING

- CONTRACTOR SHALL RELAMP, CLEAN, AND SERVICE THE EXISTING LUMINAIRES ON THE LIGHT TOWERS NORTH OF WILMINGTON ROAD. NEW SPLICES, FUSES, FUSE HOLDERS, AND SURGE PROTECTORS SHALL ALSO BE PROVIDED FOR THESE LIGHT TOWERS. THIS WORK SHALL BE PAID FOR UNDER *CLEAN AND RELAMP EXISTING LUMINAIRE* AND COMPLETED TO THE SATISFACTION OF THE ENGINEER.

GENERAL NOTES – MISCELLANEOUS

- ALL ELEVATIONS SHOWN ON THESE PLANS ARE ON THE U.S.G.S DATUM
- THE CONTRACTOR WILL NOT BE ALLOWED TO SET UP A YARD OR FIELD OFFICE ON STATE PROPERTY WITHOUT THE WRITTEN PERMISSION FROM THE DEPARTMENT
- ANY REFERENCE TO A STANDARD IN THESE PLANS SHALL BE INTERPRETED TO MEAN THE EDITION AS INDICATED BY THE SUBNUMBER LISTED ON THE INDEX OF SHEETS OR THE COPY OF THE STANDARD INCLUDED IN THESE PLANS.
- BEFORE STARTING ANY EXCAVATION, THE CONTRACTOR SHALL CALL *J.U.L.I.E.* AT (800) 892-0123 OR 811 FOR FIELD LOCATIONS OF BURIED ELECTRIC, TELEPHONE AND GAS UTILITIES. 48 HOUR NOTIFICATION IS REQUIRED.
- RESERVED.
- RESERVED.
- RESERVED.
- THE REMOVAL OF GUARDRAIL TERMINAL SECTIONS SHALL BE INCLUDED IN THE UNIT PRICE PER FOOT FOR *GUARDRAIL REMOVAL*.
- WHEN ARTIFICIAL LIGHTING IS UTILIZED IN NIGHT OPERATIONS, THE CONTRACTOR SHALL EXERCISE THE UTMOST PRECAUTIONS IN PREVENTING ADVERSE VISIBILITY TO THE MOTORING PUBLIC AND ADJOINING RESIDENTIAL AREAS.
- RESERVED.
- USE #8 EPOXY-COATED TIE BARS, CONFORMING TO ART. 1006.10 OF THE STANDARD SPECIFICATIONS, FOR ALL TIE BARS. USE THE *LONGITUDINAL CONSTRUCTION JOINT (TIE BAR GROUTED IN PLACE)* DETAIL SHOWN ON HIGHWAY STANDARD 420001 FOR ALL LONGITUDINAL JOINTS AND FOR TYING PCC PAVEMENT WIDENING TO EXISTING CONCRETE PAVEMENT AS SHOWN ON THE PLANS.
- USE #8 EPOXY-COATED TIE BARS, CONFORMING TO ART. 1006.10 OF THE STANDARD SPECIFICATIONS, FOR ALL TIE BARS. USE THE *LONGITUDINAL CONSTRUCTION JOINT (TIE BAR GROUTED IN PLACE)* DETAIL SHOWN ON HIGHWAY STANDARD 420001 FOR ALL LONGITUDINAL JOINTS.
- ANY PAVEMENT MARKINGS AND RAISED REFLECTIVE PAVEMENT MARKERS OBLITERATED BY MILLING AND RESURFACING OPERATIONS ON SIDE STREETS AND ENTRANCES SHALL BE REPLACED AND PAID FOR IN KIND.
- ALL DAMAGE TO EXISTING PAVEMENT MARKINGS OR RAISED REFLECTIVE PAVEMENT MARKERS OUTSIDE THE REMOVAL LINE SHOWN ON THE PLANS SHALL BE REPLACED AT NO ADDITIONAL COST TO THE DEPARTMENT.
- BEFORE BEGINNING ANY WORK, THE CONTRACTOR SHALL RETAIN AND RECORD FOR FUTURE REFERENCE, ALL EXISTING PAVEMENT MARKING LINES (AND RAISED REFLECTIVE PAVEMENT MARKERS) IN ORDER THAT THESE LOCATIONS CAN BE RE-ESTABLISHED FOR STRIPING. EXACT LOCATIONS OF ALL PAVEMENT MARKINGS SHALL BE AS DIRECTED BY THE ENGINEER.
- ALL PAVEMENT PATCHING LOCATIONS WILL BE DETERMINED IN THE FIELD BY THE ENGINEER.
- RESERVED.
- DRAINAGE ADJUSTMENT OR RECONSTRUCTION LOCATIONS WILL BE DETERMINED IN THE FIELD BY THE ENGINEER.
- IT SHALL BE THE CONTRACTOR'S RESPONSIBILITY TO VERIFY ALL DIMENSIONS AND CONDITIONS EXISTING IN THE FIELD PRIOR TO CONSTRUCTION AND ORDERING OF MATERIALS.
- FRAMES AND GRATES ADJUSTMENT OF PRIVATE UTILITIES WITHIN THE LIMITS OF THE IMPROVEMENTS SHALL BE DONE BY THEIR RESPECTIVE OWNERS AND ARE NOT PART OF THIS CONTRACT.
- RESERVED.
- THE CONTRACTOR SHALL CONTACT THE DISTRICT ONE TRAFFIC CONTROL SUPERVISOR AT (847)705-4151 A MINIMUM OF 72 HOURS IN ADVANCE OF BEGINNING WORK.
- THE ENGINEER SHALL CONTACT MS. CORA MATHIS, TRAFFIC FIELD ENGINEER, AT (815) 485-6475 A MINIMUM OF TWO (2) WEEKS PRIOR TO THE PLACEMENT OF PERMANENT PAVEMENT MARKINGS.
- WHERE SECTION OR SUB-SECTION MONUMENTS ARE ENCOUNTERED, THE ENGINEER SHALL BE NOTIFIED BEFORE SUCH MONUMENTS ARE REMOVED. THE CONTRACTOR SHALL PROTECT AND CAREFULLY PRESERVE ALL PROPERTY MARKERS AND MONUMENTS UNTIL THE OWNER, AN AUTHORIZED SURVEYOR OR AGENT HAS WITNESSED THEIR LOCATION.
- THESE PLANS HAVE BEEN PREPARED FROM NOTES RECEIVED FROM THE BUREAU OF MAINTENANCE (OR CONSTRUCTION OR BRIDGE INSPECTORS).

26. STRIP REFLECTIVE CRACK CONTROL TREATMENT WILL BE INSTALLED IMMEDIATELY IN FRONT OF THE HMA SURFACING OPERATION SO TRAFFIC WILL NOT DISTURB IT BEFORE BEING COVERED BY HMA. ANY CRACK CONTROL TREATMENT DISTURBED BY TRAFFIC WILL BE REPLACED AT THE CONTRACTOR'S EXPENSE.

27. BEFORE BEGINNING ANY WORK, THE CONTRACTOR SHALL RETAIN AND RECORD (FOR FUTURE REFERENCES, ALL EXISTING PAVEMENT MARKING LINES IN ORDER THAT THESE LOCATIONS CAN BE RE-ESTABLISHED FOR STRIPING. EXACT LOCATIONS OF ALL STRIPING SHALL BE AS DIRECTED BY THE ENGINEER.

28. THE PROPOSED HOT-MIX ASPHALT RESURFACING SHALL BE TAPERED OUT AT A RATE OF TWENTY (20) FEET PER INCH OF THICKNESS AT MAINLINE AND MAJOR SIDE STREET LOCATIONS, EXCEPT WHERE BUTT JOINTS ARE INDICATED. AT MINOR STREETS AND ENTRANCES, TAPER OUT IN TEN (10) FEET EXCEPT WHERE BUTT JOINTS ARE INDICATED. AT SEAL COATED STREETS AND ENTRANCES, TAPER OUT IN THREE (3) FEET UNLESS OTHERWISE SHOWN ON THE PLANS.

29. WHEN MILLED PAVEMENT IS OPEN TO TRAFFIC, THE MAXIMUM GRADE DIFFERENTIAL BETWEEN PASSES OF THE MILLING MATCHING SHALL NOT EXCEED 1 1/2 INCHES WHERE THE SPEED LIMIT IS 45 MPH OR LESS AND 1 INCH WHERE THE SPEED LIMIT IS GREATER THAN 45 MPH. WITH WRITTEN APPROVAL OF THE ENGINEER, A MAXIMUM GRADE DIFFERENTIAL OF 3 INCHES MAY BE ALLOWED IF THE EDGE OF THE MILLING IS SLOPED A MINIMUM 1:3 (V:H).

- RESERVED.
- THE CONTRACTOR WILL BE REQUIRED TO KEEP A RECORD OF THE LOCATIONS OF PLATED STRUCTURES BY STATION AND OFFSET LEFT OR RIGHT OF THE CENTERLINE OF PAVEMENT.
- THE CONTRACTOR WILL BE REQUIRED TO KEEP A RECORD OF THE LOCATIONS OF THE BURIED STRUCTURES ACCORDING TO THE STATION AND DISTANCE LEFT OR RIGHT OF THE CENTERLINE OF PAVEMENT. UPON COMPLETION OF THE WORK, THE CONTRACTOR WILL DELIVER THE RECORD TO THE ENGINEER.
- EXISTING BROKEN FRAMES AND LIDS SHALL BE REMOVED AND DISPOSED OF BY THE CONTRACTOR AND SHALL BE REPLACED AS DIRECTED BY THE ENGINEER. REPLACEMENT FRAMES AND LIDS WILL BE PAID FOR IN ACCORDANCE WITH ARTICLE 109.04 OF THE STANDARD SPECIFICATIONS UNLESS A SEPARATE PAY ITEM HAS BEEN PROVIDED.

34. FOR FRAMES AND LIDS ADJUSTMENT WITHOUT MILLING, REUSE EXISTING FRAME AND LID UNLESS OTHERWISE SPECIFIED IN THE PLANS.

35. ALL CLASS B PAVEMENT PATCHING WHICH REQUIRES FRAMES AND GRATES TO BE ADJUSTED SHALL BE CONSTRUCTED UTILIZING *CAST IN PLACE* ALTERNATE ACCORDING TO STATE HIGHWAY STANDARD 420111 FOR *PCC PAVEMENT ROUNDOUTS*.

36. THE CONTRACTOR SHALL BE RESPONSIBLE FOR THE NOTIFICATION OF ALL EMERGENCY SERVICES, SCHOOL DISTRICTS, I.D.O.T.'S COMMUNICATIONS CENTER, SPRINGFIELD TRUCK PERMIT SECTION AND OTHER AGENCIES AFFECTED BY THE CLOSURE. THE CONTRACTOR SHALL ALSO BE RESPONSIBLE FOR POSTING SIGNS THAT WILL INDICATE THE DATES THE CLOSURE WILL BE IN PLACE.

37. THE ENGINEER SHALL OBTAIN APPROVAL FROM THE DISTRICT ONE BUREAU CHIEF OF MAINTENANCE FOR ANY PROPOSED REVISIONS IN THE SCHEDULED PAVEMENT PATCHING LOCATIONS.

38. DO NOT SCALE PLANS FOR CONSTRUCTION DIMENSIONS.

39. RESERVED.

37. PAVEMENT MARKING TAPE, TYPE III SHALL BE USED FOR SHORT TERM PAVEMENT MARKINGS ON ALL FINAL SURFACES. THE COST OF THE PAVEMENT MARKING TAPE, TYPE III AND ITS REMOVAL SHALL BE INCLUDED IN THE COST OF SHORT TERM PAVEMENT MARKING.

38. THE *ADVANCED WARNING SIGN DETAIL FOR ARTERIAL TRAFFIC* LOCATED IN THE SPECIAL PROVISION FOR *TEMPORARY INFORMATION SIGNING FOR LANE CLOSURES* (AND THE SPECIAL PROVISION FOR *PUBLIC CONVENIENCE AND SAFETY*) IS/ARE APPLICABLE ONLY TO ARTERIAL ROADS AND SHALL NOT BE APPLIED TO EXPRESSWAYS/TOLLWAYS.

39. DISPOSAL OF SHOULDER CUTTING AND CLEAN SWEEPING OF THE SHOULDERS SHALL BE COMPLETED PRIOR TO THE OPENING OF THE SHOULDERS AND TRAFFIC. DISPOSAL AND SWEEPING SHALL BE INCLUDED IN THE COST OF "SHOULDER RUMBLE STRIPS".

GENERAL NOTES – EROSION CONTROL & LANDSCAPING

- ALL EROSION CONTROL MEASURES SHALL BE IN ACCORDANCE WITH THE REQUIREMENTS OF THE STANDARD SPECIFICATIONS AND OF THE APPLICABLE STATE STANDARDS FOR THE ENTIRE DURATION OF THE CONTRACT, OR UNTIL SUCH TIME AS DIRECTED BY THE ENGINEER.
- ALL AREAS DISTURBED AND RESTORED WITH SEEDING SHALL BE COVERED WITH AN EROSION CONTROL BLANKET IN ACCORDANCE WITH SECTION 251 OF THE STANDARD SPECIFICATIONS.
- SEEDING WILL NOT BE PERMITTED AT ANY TIME WHEN THE GROUND IS FROZEN, WET, OR IN AN UNTILLABLE CONDITION. LOCATIONS TO BE SEEDER ARE AS OUTLINED IN THESE PLANS. ANY ADDITIONAL AREAS SHALL BE DETERMINED BY THE ENGINEER.
- BEFORE STARTING CONSTRUCTION ON STAGE 2 OF THE PROJECT, EROSION CONTROL BLANKET AND SEEDING, CLASS 3 SHALL BE PLACED AFTER FINAL GRADING HAS BEEN COMPLETED ON THE FIRST PHASE OF CONSTRUCTION.
- THE CONTRACTOR SHALL TAKE ALL NECESSARY PRECAUTIONS FOR THE PROTECTION OF EXISTING PLANT MATERIAL FOR WHICH THE CONTRACT DOES NOT PROVIDE REMOVAL. THE PROTECTION OF EXISTING PLANT MATERIAL AND THE REPAIR OR REPLACEMENT OF EXISTING PLANT MATERIAL DAMAGED BY THE CONTRACTOR SHALL BE DONE IN ACCORDANCE WITH THE REQUIREMENTS OF SECTION 201 OF THE STANDARD SPECIFICATIONS.
- LANDSCAPE CONTRACTOR SHALL STAKE THE LOCATION OF ALL SEEDING AND HAVE ALL PLANTING LAYOUTS APPROVED BY THE ENGINEER PRIOR TO INSTALLATION.
- APPROVED WATERING EQUIPMENT SHALL BE AT THE SITE OF THE WORK AND IN OPERATING CONDITION PRIOR TO STARTING THE SEEDING OPERATION AND DURING ALL SEEDING OPERATIONS OR SEEDING WILL NOT BE ALLOWED.
- THE CONTRACTOR SHALL REPAIR IN KIND ANY AREAS DAMAGED AS A RESULT OF LANDSCAPING OPERATIONS
- THE FINISHED EARTHWORK SHALL HAVE A VEGETATION SUSTAINING SOIL COVERING THE TOP FOUR (4) INCHES IN AREAS TO BE SEEDER OR SODDED.

PLOT DATE = 12/23/2009
 FILE NAME = K:\11162518\Addendum\182518.dgn
 PLOT SCALE = PLOT SCALE
 PLOT NAME =
 MODEL =



200 West Front Street
Wheaton, IL 60187

DESIGNED - KSD	REVISED - ADD. NO. 1
DRAWN - KSD	REVISED -
CHECKED - CMJ	REVISED -
DATE - 03-04-09	REVISED -

STATE OF ILLINOIS
DEPARTMENT OF TRANSPORTATION

I-55 OVER THE KANKAKEE RIVER	
GENERAL NOTES	
SCALE: NTS	SHEET NO. 1 OF 1 SHEETS
STA. ----	TO STA. ----

F.A.I. RTE.	SECTION	COUNTY	TOTAL SHEETS	SHEET NO.
55	88 (B&B-1) BR	WILL	51	3
CONTRACT NO. 62930				
FED. ROAD DIST. NO. 1 ILLINOIS FED. AID PROJECT				

SUMMARY OF QUANTITIES

SUMMARY OF QUANTITIES			URBAN TOTAL QUANTITY	CONSTRUCTION TYPE CODE		
CODE NO.	ITEM DESCRIPTION	UNIT		ROADWAY I000-2A QUANTITY	BRIDGE	
					SN 099-0001 X071-2A QUANTITY	SN 099-0002 X071-2A QUANTITY
20200100	EARTH EXCAVATION	CU YD	3,610	3,610		
20201550	SUB-BASE GRANULAR MATERIAL, TYPE B	CU YD	783	783		
20201200	REMOVAL AND DISPOSAL OF UNSUITABLE MATERIAL	CU YD	500	500		
20400800	FURNISHED EXCAVATION	CU YD	200	200		
20800150	TRENCH BACKFILL	CU YD	120	120		
25000210	SEEDING, CLASS 2A	ACRE	0.56	0.56		
25000400	NITROGEN FERTILIZER NUTRIENT	POUND	50	50		
25000500	PHOSPHORUS FERTILIZER NUTRIENT	POUND	50	50		
25000600	POTASSIUM FERTILIZER NUTRIENT	POUND	50	50		
25100630	EROSION CONTROL BLANKET	SQ YD	2,713	2,713		
28000500	INLET AND PIPE PROTECTION	EACH	4	4		
40600895	CONSTRUCTING TEST STRIP	EACH	1	1		
40603340	HOT-MIX ASPHALT SURFACE COURSE, MIX "D", N70	TON	1524	1524		
40603595	POLYMERIZED HOT-MIX ASPHALT SURFACE COURSE, MIX "F", N90	TON	72	72		
40800020	BITUMINOUS MATERIALS (PRIME COAT)	TON	45	45		
42001300	PROTECTIVE COAT	SQ YD	8,802		4,353	4,449
44000155	HOT-MIX ASPHALT SURFACE REMOVAL, 1 1/2"	SQ YD	10,680	10,680		
44000156	HOT-MIX ASPHALT SURFACE REMOVAL, 1 3/4"	SQ YD	2,250	2,250		
44004250	PAVED SHOULDER REMOVAL	SQ YD	2,670	2,670		
48203003	HOT-MIX ASPHALT SHOULDERS, 1 1/2"	SQ YD	10,680	10,680		
50102400	CONCRETE REMOVAL	CU YD	93		85	8
50104400	CONCRETE HEADWALL REMOVAL	EACH	10	10		
50200100	STRUCTURE EXCAVATION	CU YD	10		10	
50300225	CONCRETE STRUCTURES	CU YD	46.8		17.3	29.5
50300255	CONCRETE SUPERSTRUCTURE	CU YD	90.8		90.8	
50300260	BRIDGE DECK GROOVING	SQ YD	8,306		4,087	4,219
50500505	STUD SHEAR CONNECTORS	EACH	19		19	
NP 55039700	STORM SEWERS TO BE CLEANED	FOOT	850	850		
50800205	REINFORCEMENT BARS, EPOXY COATED	POUND	18,740		15,650	3,090
52000110	PREFORMED JOINT STRIP SEAL	FOOT	92		92	
52000325	NEOPRENE EXPANSION JOINT, 2 1/2"	FOOT	97			97
52000340	NEOPRENE EXPANSION JOINT, 4"	FOOT	191		94	97
542A0217	PIPE CULVERTS, CLASS A, TYPE 1 12"	FOOT	339	339		
542A0220	PIPE CULVERTS, CLASS A, TYPE 1 15"	FOOT	475	475		
542A0223	PIPE CULVERTS, CLASS A, TYPE 1 18"	FOOT	30	30		
54213657	PRECAST REINFORCED CONCRETE FLARED END SECTIONS 12"	EACH	2	2		
54213660	PRECAST REINFORCED CONCRETE FLARED END SECTIONS 15"	EACH	1	1		
54247090	GRATING FOR CONCRETE FLARED END SECTION 12"	EACH	2	2		
54247100	GRATING FOR CONCRETE FLARED END SECTION 15"	EACH	1	1		
59000200	EPOXY CRACK INJECTION	FOOT	902		627	275
60100060	CONCRETE HEADWALL FOR PIPE DRAINS	EACH	4	4		
60107600	PIPE UNDERDRAINS 4"	FOOT	4,000	4,000		
60236200	INLETS, TYPE A, TYPE 8 GRATE	EACH	3	3		
60615400	PAVED DITCH, TYPE A-15	FOOT	517	517		
63801200	MODULAR GLARE SCREEN SYSTEM	FOOT	4,300	4,300		
67000400	ENGINEER'S FIELD OFFICE, TYPE A	CAL MO	12	12		
67100100	MOBILIZATION	L SUM	1	1		
70100405	TRAFFIC CONTROL AND PROTECTION, STANDARD 701321	EACH	1	1		
70106800	CHANGEABLE MESSAGE SIGN	CAL MO	12	12		

SUMMARY OF QUANTITIES			URBAN TOTAL QUANTITY	CONSTRUCTION TYPE CODE		
CODE NO.	ITEM DESCRIPTION	UNIT		ROADWAY I000-2A QUANTITY	BRIDGE	
					SN 099-0001 X071-2A QUANTITY	SN 099-0002 X071-2A QUANTITY
70300240	TEMPORARY PAVEMENT MARKING - LINE 6"	FOOT	12,250			
70301000	WORK ZONE PAVEMENT MARKING REMOVAL	SQ FT	12,370	12,370		
70400100	TEMPORARY CONCRETE BARRIER	FOOT	6,125	6,125		
70400200	RELOCATE TEMPORARY CONCRETE BARRIER	FOOT	6,125	6,125		
* 78000200	THERMOPLASTIC PAVEMENT MARKING - LINE 4"	FOOT	20,080	20,080		
* 78000500	THERMOPLASTIC PAVEMENT MARKING - LINE 8"	FOOT	2,690	2,690		
* 78000600	THERMOPLASTIC PAVEMENT MARKING - LINE 12"	FOOT	660	660		
* 78003120	PREFORMED PLASTIC PAVEMENT MARKING, TYPE B - LINE 5"	FOOT	4,450	4,450		
* 78005110	EPOXY PAVEMENT MARKING-LINE 4"	FOOT	5,220	5,220		
* 78100100	RAISED REFLECTIVE PAVEMENT MARKER	EACH	350	350		
78300100	PAVEMENT MARKING REMOVAL	SQ FT	6,430	6,430		
78300200	RAISED REFLECTIVE PAVEMENT MARKER REMOVAL	EACH	350	350		
X0320887	POLYMER CONCRETE	CU FT	0.5			0.5
X0322185	BRIDGE DECK LATEX CONCRETE OVERLAY, 2 1/4 INCHES	SQ YD	8,611		4,162	4,449
X0322250	TEMPORARY INFORMATION, SIGNING	SQ FT	1414	1414		
X0324744	REMOVAL OF EXISTING PRECAST CONCRETE UNITS	SQ FT	180		180	
X0325085	TEMPORARY PAVEMENT (INTERSTATE)	SQ YD	7,044	7,044		
X0325303	STRUCTURAL REPAIR OF CONCRETE (DEPTH GREATER THAN 5 INCHES)	SQ FT	17		17	
X0325305	STRUCTURAL REPAIR OF CONCRETE (DEPTH EQUAL TO OR LESS THAN 5 INCHES)	SQ FT	621		531	90
X0325349	TEMPORARY CONCRETE BARRIER (TO REMAIN PERMANENTLY)	FOOT	1,038	1,038		
X0325416	TRAFFIC CONTROL AND PROTECTION FOR DETOUR ROUTE	L SUM	1	1		
X0325426	PORTLAND CEMENT CONCRETE SURFACE REMOVAL 1 3/4"	SQ YD	850	850		
* X0325590	HIGH TENSION CABLE MEDIAN BARRIER TERMINALS	EACH	4	4		
X0325775	WET REFLECTIVE TEMPORARY TAPE, TYPE III, 4 INCH	FOOT	37,110	37,110		
X4067107	POLYMERIZED LEVELING BINDER (MACHINE METHOD), IL-4.75, N50	TON	56	56		
X5121800	PERMANENT STEEL SHEET PILING	SQ FT	468		468	
X7011015	TRAFFIC CONTROL AND PROTECTION (EXPRESSWAYS)	L SUM	1	1		
X7013820	TRAFFIC CONTROL SURVEILLANCE, EXPRESSWAYS	CAL DA	80	80		
XX003686	REMOVE EXISTING CONCRETE END SECTION	EACH	1	1		
* XX007164	CLEAN AND RELAMP EXISTING LUMINAIRE	EACH	57	57		
Z0002820	BARRICADES, TYPE III	WEEK	60	60		
Z0006201	BRIDGE DECK HYDRO-SCARIFICATION 1"	SQ YD	8,611		4,162	4,449
Z0013798	CONSTRUCTION LAYOUT	L SUM	1	1		
NP Z0014700	CULVERT TO BE CLEANED	EACH	14	14		
Z0016001	DECK SLAB REPAIR (FULL DEPTH, TYPE I)	SQ YD	6		5	1
Z0016002	DECK SLAB REPAIR (FULL DEPTH, TYPE II)	SQ YD	238		238	
NP Z0018500	DRAINAGE STRUCTURES TO BE CLEANED	EACH	14	14		
Z0030150	IMPACT ATTENUATORS (NON-REDIRECTIVE), TEST LEVEL 3	EACH	4	4		
Z0030250	IMPACT ATTENUATORS, TEMPORARY (NON-REDIRECTIVE), TEST LEVEL 3	EACH	2	2		
Z0030350	IMPACT ATTENUATORS, RELOCATE (NON-REDIRECTIVE), TEST LEVEL 3	EACH	2	2		
Z0040530	PIPE UNDERDRAIN REMOVAL	FOOT	4,000	4,000		
Z0043800	PRECAST PRESTRESSED CONCRETE I-BEAM REPAIR	SQ FT	11.5		11.5	
Z0065740	SLOTTED DRAIN 12" WITH VARIABLE SLOT	FOOT	466	466		
0 Z0076600	TRAINEES	HOUR	1000	1000		
Z0076870	UNDERDRAIN CONNECTION TO STRUCTURE	EACH	4	4		
* X0326676	REPLACE SURFACE SENSOR AND TEMPERATURE PROBE	L SUM	1	1		
X0326677	REMOVE HIGH TENSION CABLE MEDIAN BARRIER	FOOT	2,390	2,390		
Z0001050	AGGREGATE SUBGRADE 1/2"	SQ YD	7,044	7,044		
Z0065760	SLOTTED DRAIN 15" WITH VARIABLE SLOT	FOOT	573	573		

NP = NON-PARTICIPATING
0 = Y080

rjngroup
Excellence through Ownership
200 West Front Street
Wheaton, IL 60187

DESIGNED - KSD	REVISED -
DRAWN - KSD	REVISED -
CHECKED - CMJ	REVISED -
DATE - 03-04-09	REVISED -

STATE OF ILLINOIS
DEPARTMENT OF TRANSPORTATION

I-55 OVER THE KANKAKEE RIVER
SUMMARY OF QUANTITIES
SCALE: NTS SHEET NO. 1 OF 1 SHEETS STA. ---- TO STA. ----

Rev. 12-30-09

F.A.I. R.T.E. 55	SECTION 88 (R&B-I) BR	COUNTY WILL	TOTAL SHEETS 72	SHEET NO. 4
CONTRACT NO. 62930				
FED. ROAD DIST. NO. 1 ILLINOIS FED. AID PROJECT				

SUMMARY OF QUANTITIES



SUMMARY OF QUANTITIES			URBAN TOTAL QUANTITY	CONSTRUCTION TYPE CODE		
CODE NO.	ITEM DESCRIPTION	UNIT		ROADWAY 1000-2A QUANTITY	BRIDGE	
					SN 099-0001 X071-2A QUANTITY	SN 099-0002 X071-2A QUANTITY
40600300	AGGREGATE (PRIME COAT)	TON	223	223		
40600982	HOT-MIX ASPHALT SURFACE REMOVAL - BUTT JOINT	SQ YD	144	144		
40601005	HOT MIX ASPHALT REPLACEMENT OVER PATCHES	TON	530	530		
40603085	HOT-MIX ASPHALT BINDER COURSE, IL-19.0, N70	TON	2,286	2,286		
44000164	HOT-MIX ASPHALT SURFACE REMOVAL, 3 3/4"	SQ YD	18,147	18,147		
44000165	HOT-MIX ASPHALT SURFACE REMOVAL, 4"	SQ YD	37,548	37,548		
44002216	HOT-MIX ASPHALT REMOVAL OVER PATCHES, 4"	SQ YD	2366	2366		
44201765	CLASS D PATCHES, TYPE II, 10 INCH	SQ YD	901	901		
44201769	CLASS D PATCHES, TYPE III, 10 INCH	SQ YD	676	676		
44201771	CLASS D PATCHES, TYPE IV, 10 INCH	SQ YD	676	676		
44300900	STRIP REFLECTIVE CRACK CONTROL TREATMENT SYSTEM A	FOOT	10,915	10,915		
63500105	DELINEATORS	EACH	133	133		
64200105	SHOULDER RUMBLE STRIP	FOOT	16,053	16,053		
X0322729	MATERIAL TRANSFER DEVICE	TON	10,138	10,138		
X0324685	TEST STRIP (STONE MATRIX ASPHALT)	EACH	2	2		
40603153	POLYMERIZED HOT-MIX ASPHALT SURFACE COURSE, STONE MATRIX ASPHALT, N80	TON	5,069	5,069		
40603148	POLYMERIZED HOT-MIX ASPHALT BINDER COURSE, STONE MATRIX ASPHALT, N80	TON	5,069	5,069		

• SPECIALTY ITEM

Added Sheet 12-30-09

rjngroup

Excellence through Ownership

200 West Front Street
Wheaton, IL 60187

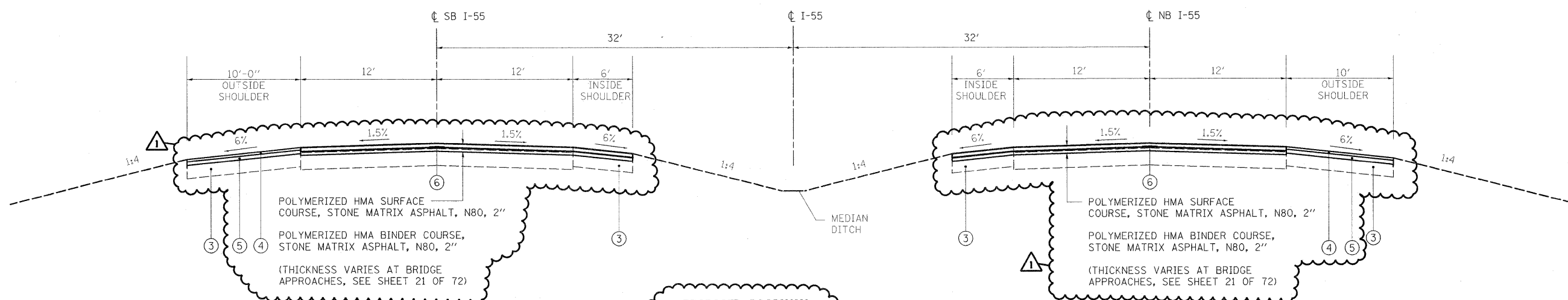
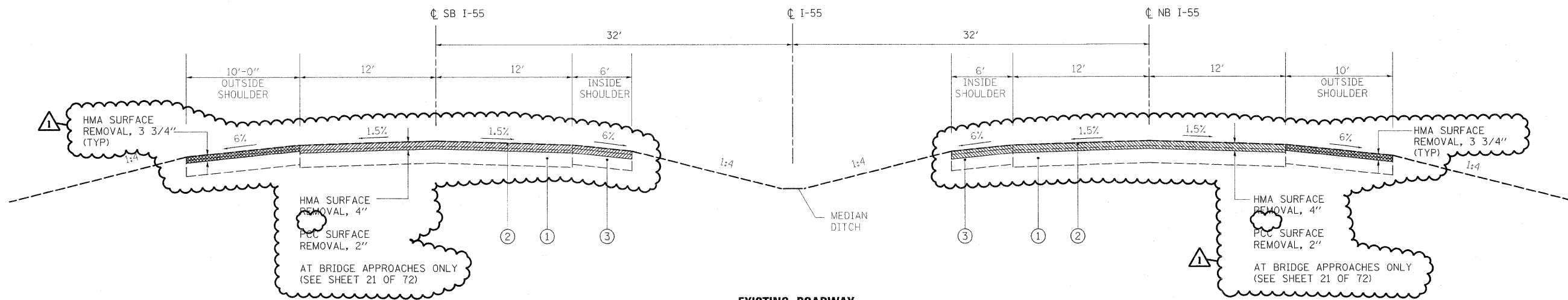
DESIGNED - KSD	REVISED - ADD. NO. 1
DRAWN - KSD	REVISED -
CHECKED - CMJ	REVISED -
DATE - 03-04-09	REVISED -

STATE OF ILLINOIS
DEPARTMENT OF TRANSPORTATION

I-55 OVER THE KANKAKEE RIVER
SUMMARY OF QUANTITIES

SCALE: NTS SHEET NO. 1 OF 1 SHEETS STA. ---- TO STA. ----

F.A.I. RTE.	SECTION	COUNTY	TOTAL SHEETS	SHEET NO.
55	88 (B&B-1) BR	WILL	72	4A
CONTRACT NO. 62930				
FED. ROAD DIST. NO. 1 ILLINOIS FED. AID PROJECT				



INSIDE SHOULDER MILLING & RESURFACING:
 STA 27+50.00 TO 33+50.00
 STA 42+50.00 TO 61+12.50
 STA 71+12.50 TO 76+50.00
 STA 87+50.00 TO 90+70.00

MAINLINE PAVEMENT & OUTSIDE SHOULDER MILLING & RESURFACING:
 STA 27+50.00 TO 61+12.50
 STA 71+12.50 TO 90+70.00

HOT-MIX ASPHALT MIXTURE

MIXTURE TYPE	THICKNESS	AIR VOIDS
HMA BINDER COURSE, IL-19.0, N70	1 1/2"	4% @ 70 Gyr.
HMA SURFACE COURSE, MIX "D", N70 (IL 9.5 mm)	2 1/4"	4% @ 70 Gyr.
POLYMERIZED HMA BINDER COURSE, SMA, N80	2"	3.5% @ 80 Gyr.
POLYMERIZED HMA SURFACE COURSE, SMA, N80	2"	3.5% @ 80 Gyr.
HMA CROSSOVER, HMA BINDER IL-19mm	13"	2% @ 30 Gyr.
HMA SHOULDERS, HMA BINDER IL-19mm	10"	2% @ 30 Gyr.
STABILIZED SUBBASE (HMA IL-19mm)	4 1/2"	2% @ 30 Gyr.
POLYMERIZED LEVELING BINDER (MACHINE METHOD), IL-4.75, N50	VARIABLE	4% @ 50 Gyr.

THE UNIT WEIGHT TO CALCULATE ALL HMA STONE MATRIX ASPHALT MIXTURE QUANTITIES IS 135LBS/SY/IN THE UNIT WEIGHT TO CALCULATE ALL OTHER HMA MIXTURES QUANTITIES IS 112LBS/SY/IN
 *WHEN RAP EXCEEDS 20%, THE NEW ASPHALT BINDER IN THE MIX SHALL BE PG 58-22.

THE "AC TYPE" FOR POLYMERIZED HMA MIXES SHALL BE "SBS/SBR PG 70-22" AND FOR NON-POLYMERIZED HMA THE "AC TYPE" SHALL BE "PG 64-22" UNLESS MODIFIED BY DISTRICT ONE SPECIAL PROVISIONS. FOR "PERCENT OF RAP" SEE DISTRICT ONE SPECIAL PROVISIONS.

- LEGEND**
- ① EXISTING PCC PAVEMENT, 10"
 - ② EXISTING HOT-MIX ASPHALT SURFACE, VARIES
 - ③ EXISTING HOT-MIX ASPHALT SHOULDER, 10"
 - ④ HOT-MIX ASPHALT SURFACE COURSE, MIX "D", N70, 1 1/2"
 - ⑤ HOT-MIX ASPHALT BINDER COURSE, IL-19.0, N70, 2 1/4"
 - ⑥ STRIP REFLECTIVE CRACK CONTROL TREATMENT, SYSTEM A

PLOT DATE = 12/23/2009
 PLOT SCALE = 60%
 USER NAME = chedeb
 MODEL = Default



200 West Front Street
 Wheaton, IL 60187

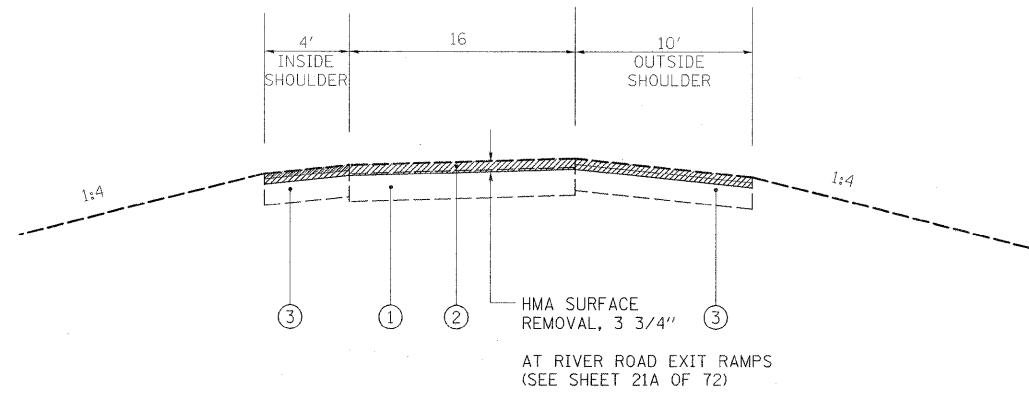
DESIGNED - KSD	REVISED - ADD. NO. 1
DRAWN - KSD	REVISED -
CHECKED - CMJ	REVISED -
DATE - 03-04-09	REVISED -

**STATE OF ILLINOIS
 DEPARTMENT OF TRANSPORTATION**

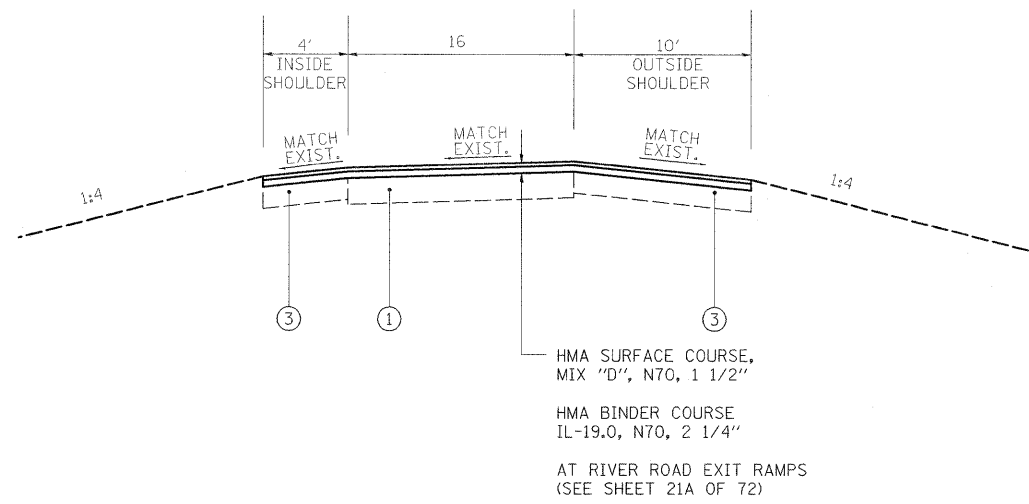
**I-55 OVER THE KANKAKEE RIVER
 TYPICAL SECTIONS**

SCALE: NTS SHEET NO. 1 OF 3 SHEETS STA. --- TO STA. ---

F.A.I. RTE.	SECTION	COUNTY	TOTAL SHEETS	SHEET NO.
55	88 (B&B-1) BR	WILL	72	5
CONTRACT NO. 62930				
FED. ROAD DIST. NO. 1 ILLINOIS FED. AID PROJECT				



**EXISTING
N. RIVER ROAD EXIT RAMP
TYPICAL SECTION**



**PROPOSED
N. RIVER ROAD EXIT RAMP
TYPICAL SECTION**

- LEGEND**
- ① EXISTING PCC PAVEMENT
 - ② EXISTING HOT-MIX ASPHALT SURFACE, VARIES
 - ③ EXISTING HOT-MIX ASPHALT SHOULDER, VARIES

12/23/2009 10:57 AM
 C:\Users\kds\Documents\122809\122809.dwg
 User: kds
 Model: Default



200 West Front Street
Wheaton, IL 60187

DESIGNED - KSD	REVISED - ADD. NO. 1
DRAWN - KSD	REVISED -
CHECKED - CMJ	REVISED -
DATE - 03-04-09	REVISED -

**STATE OF ILLINOIS
DEPARTMENT OF TRANSPORTATION**

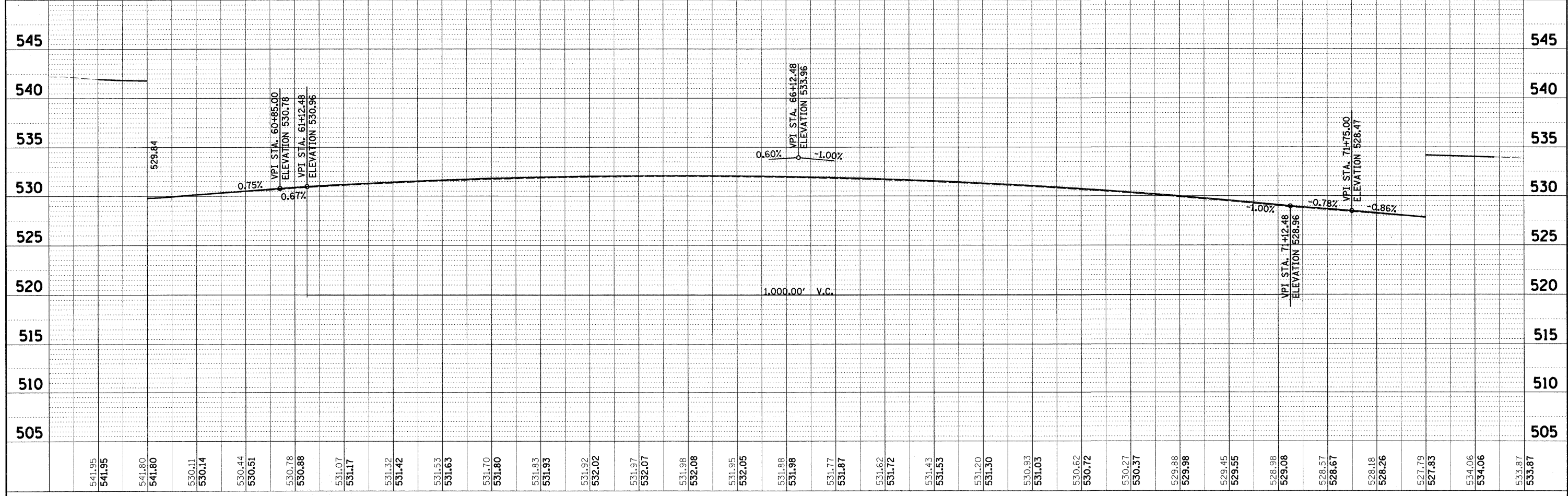
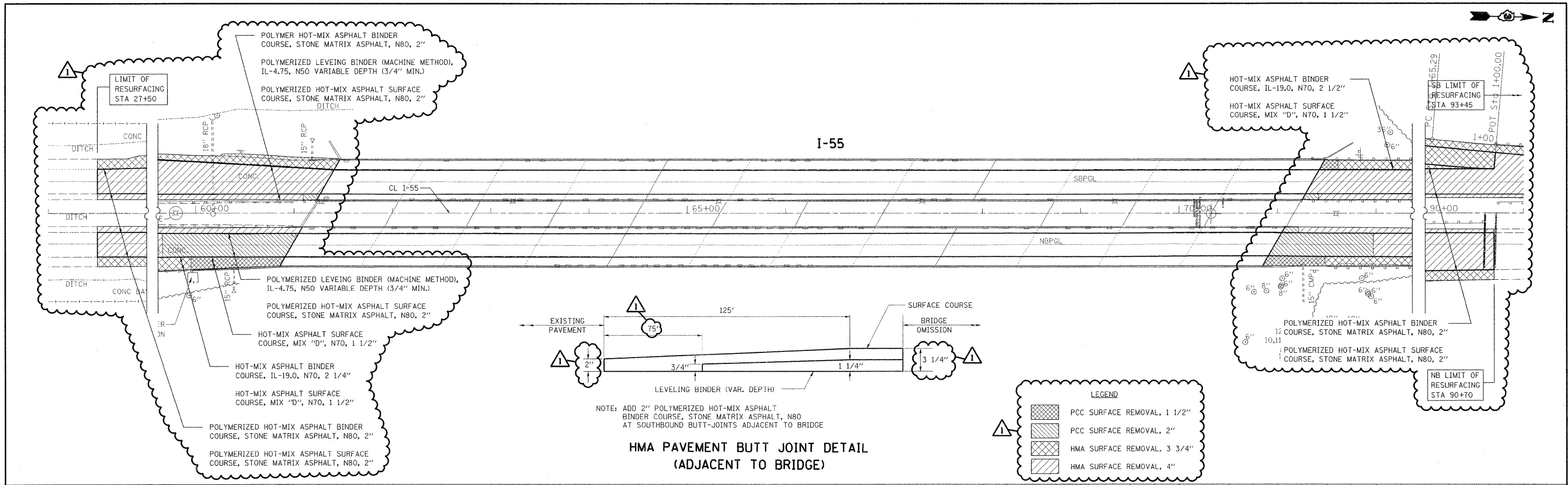
**I-55 OVER THE KANKAKEE RIVER
RAMP TYPICAL SECTIONS**

SCALE: NTS SHEET NO. 2 OF 3 SHEETS STA. ---- TO STA. ----

F.A.I. RTE.	SECTION	COUNTY	TOTAL SHEETS	SHEET NO.
55	8B (B&B-1) BR	WILL	72	5A
CONTRACT NO. 62930				
FED. ROAD DIST. NO. 1 ILLINOIS FED. AID PROJECT				

PLAN SURVEYED BY DATE
 ALIGNED CHECKED BY
 RT. OF WAY CHECKED BY
 NO. PAID FILE NAME

PROFILE SURVEYED BY DATE
 PLOTTED CHECKED BY
 B.M. NOTED
 NO. STRUCTURE NOTATIONS OK'D



rjngroup
 Excellence through Ownership

200 West Front Street
 Wheaton, IL 60187

DESIGNED -
 DRAWN -
 CHECKED -
 DATE -

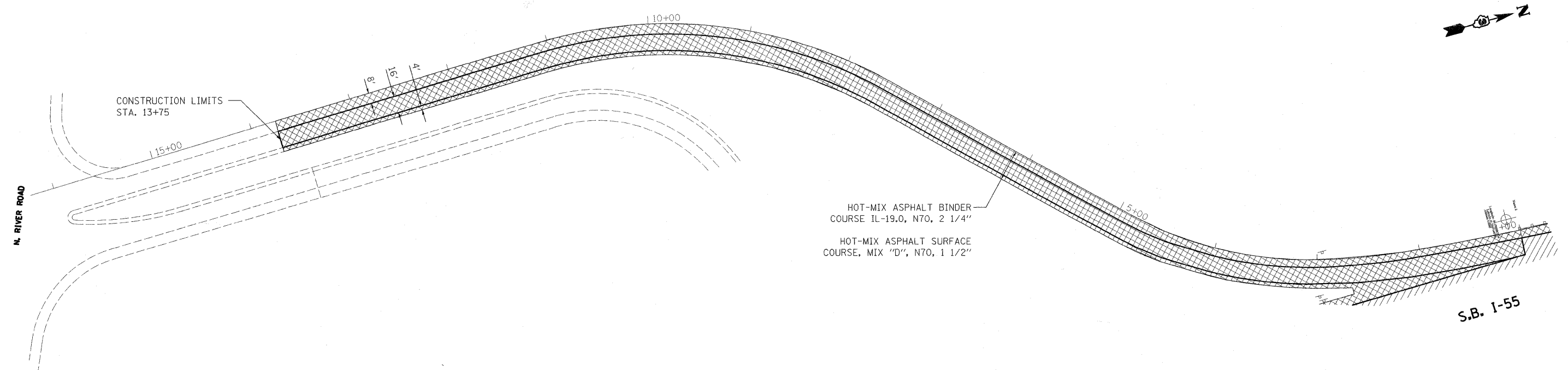
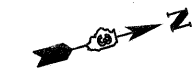
REVISED -
 REVISED -
 REVISED -
 REVISED -

STATE OF ILLINOIS
 DEPARTMENT OF TRANSPORTATION

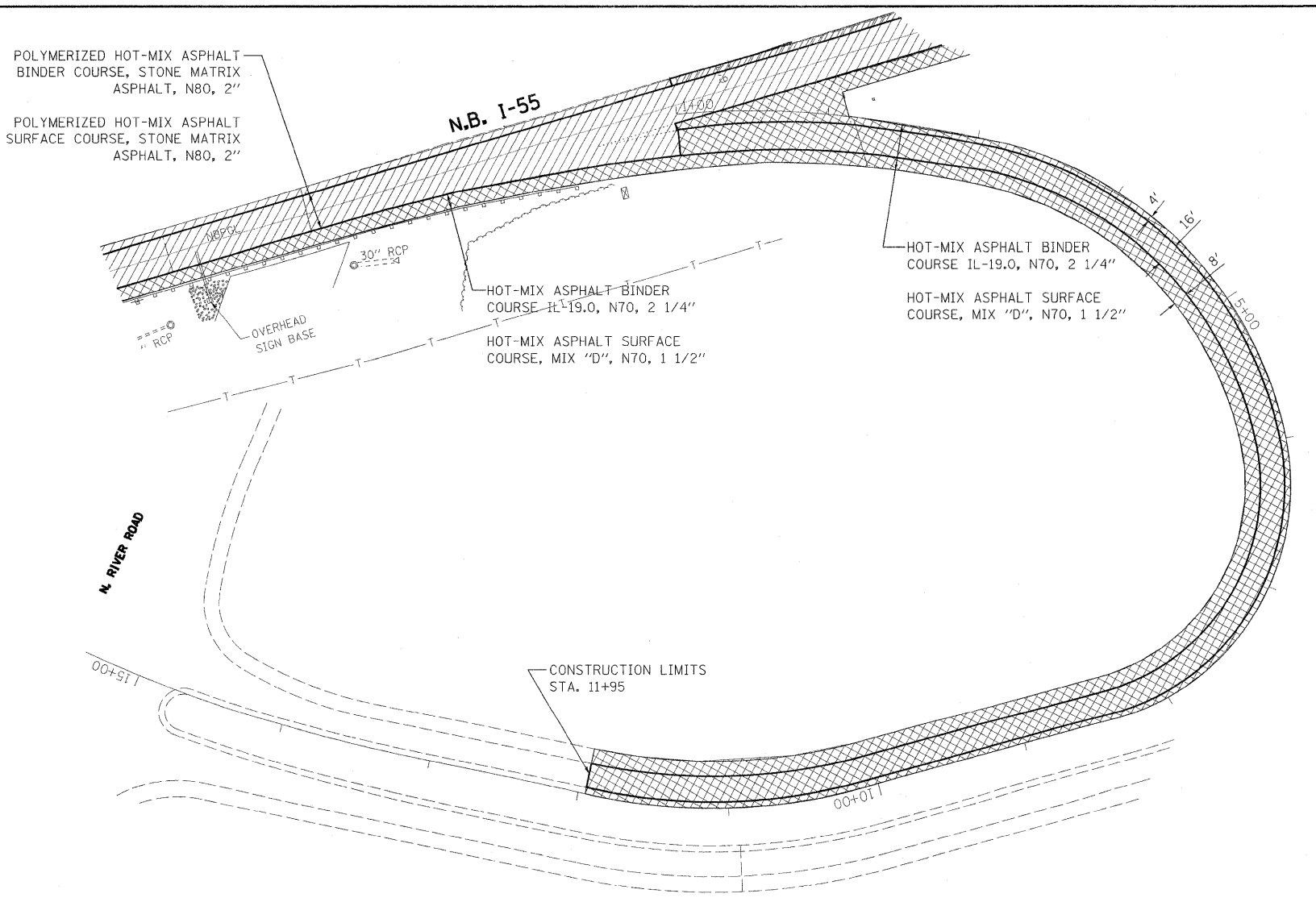
I-55 OVER THE KANKAKEE RIVER
 BRIDGE PLAN & PROFILE

SCALE: 1" = 50'
 SHEET NO. X OF 5 SHEETS
 STA. 59+00.00 TO STA. 74+00.00

F.A.I. RTE. 55
 SECTION BB (B&B-1) BR
 COUNTY WILL
 TOTAL SHEETS 72
 SHEET NO. 21
 CONTRACT NO. 62930
 FED. ROAD DIST. NO. ILLINOIS FED. AID PROJECT



S.B. I-55



POLYMERIZED HOT-MIX ASPHALT
BINDER COURSE, STONE MATRIX
ASPHALT, N80, 2"

POLYMERIZED HOT-MIX ASPHALT
SURFACE COURSE, STONE MATRIX
ASPHALT, N80, 2"

HOT-MIX ASPHALT BINDER
COURSE IL-19.0, N70, 2 1/4"

HOT-MIX ASPHALT SURFACE
COURSE, MIX "D", N70, 1 1/2"

HOT-MIX ASPHALT BINDER
COURSE IL-19.0, N70, 2 1/4"

HOT-MIX ASPHALT SURFACE
COURSE, MIX "D", N70, 1 1/2"

LEGEND

- PCC SURFACE REMOVAL, 1 1/2"
- PCC SURFACE REMOVAL, 2"
- HMA SURFACE REMOVAL, 3 3/4"
- HMA SURFACE REMOVAL, 4"

PLOT DATE = 12/23/2009 8:11 AM
 USER = LOUTIS\06-18-09\N1.0 Current\1.2 Sheets\182518_RAMP5.dgn
 PLOT SCALE = 1/4" = 1'-0"
 USER NAME = dcedas
 MODEL = Default



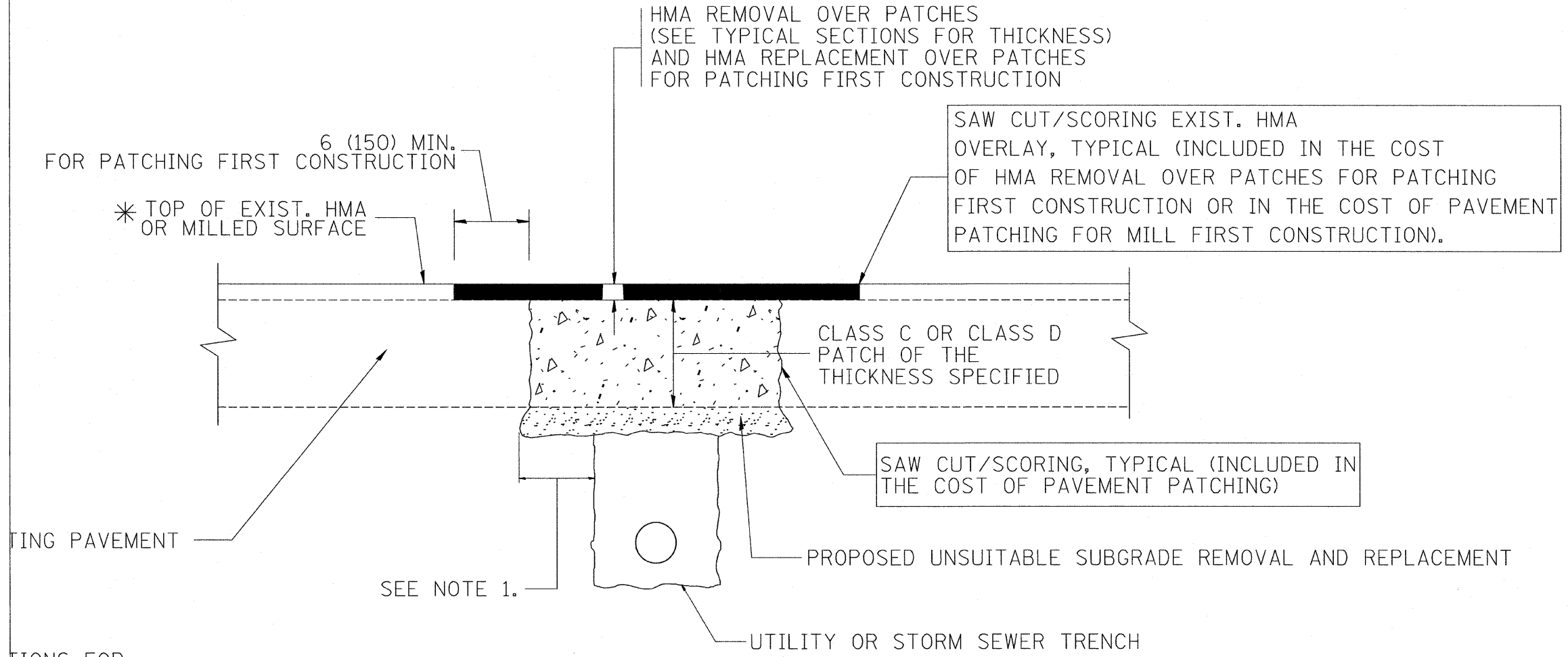
200 West Front Street
Wheaton, IL 60187

DESIGNED - KSD	REVISED - ADD. NO. 1
DRAWN - KSD	REVISED -
CHECKED - CMJ	REVISED -
DATE - 03-04-09	REVISED -

STATE OF ILLINOIS
DEPARTMENT OF TRANSPORTATION

N. RIVER ROAD EXIT RAMP PLAN	
SCALE: 1" = 50'	SHEET NO. 2 OF 4 SHEETS
STA. 29+00.00	TO STA. 44+00.00

F.A.I. RTE.	SECTION	COUNTY	TOTAL SHEETS	SHEET NO.
55	88 (B&B-1) BR	WILL	72	21A
CONTRACT NO. 62930				
FED. ROAD DIST. NO. 1 ILLINOIS FED. AID PROJECT				



ING PAVEMENT

TIONS FOR MATERIALS

SEQUENCE OF CONSTRUCTION (PATCHING FIRST)

1. REMOVE THE EXISTING HMA MATERIAL OVER THE AREA TO BE PATCHED.
2. REMOVE AND REPLACE WITH CLASS C OR D PATCH.
3. REPLACE HMA MATERIAL OVER THE AREA TO BE PATCHED.

SEQUENCE OF CONSTRUCTION (MILLING FIRST)

1. MILL HMA FIRST IF THERE IS AT LEAST 4 1/2 INCHES OR MORE OF HMA MATERIAL ON TOP OF THE EXISTING PAVEMENT OR IF THE PAVEMENT IS FULL DEPTH HMA. A MINIMUM OF 2 INCHES OF HMA MATERIAL SHALL BE IN PLACE AFTER MILLING.
2. REMOVE AND REPLACE WITH FULL DEPTH CLASS D PATCHES TO TOP OF MILLED SURFACE.

THE FULL DEPTH PATCH SHALL BE 12 (300) WIDER OF THE TRENCH.

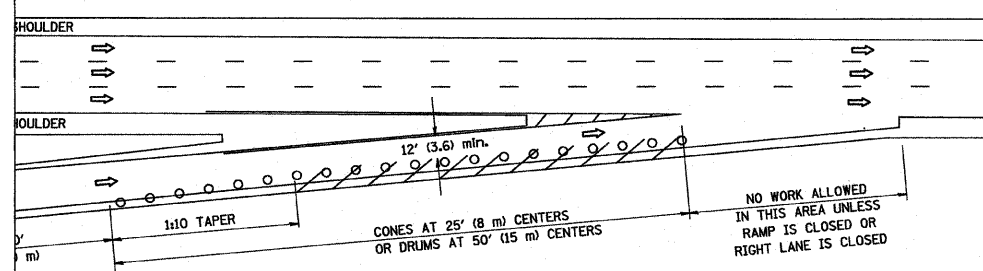
MEASUREMENT AND BASIS RECURRING SPECIAL PATCHING WITH HOT-MIX "LAY REMOVAL".

ALL DIMENSIONS ARE IN INCHES (MILLIMETERS) UNLESS OTHERWISE SHOWN.

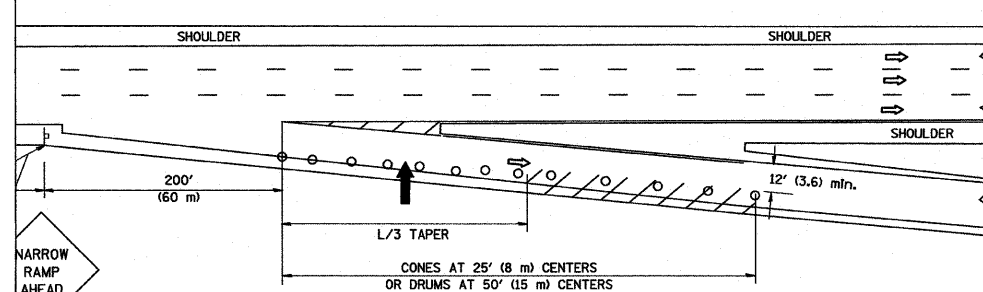
Added Sheet 12-30-09

DESIGNED - R. SHAH	REVISED - A. ABBAS 04-27-98	STATE OF ILLINOIS DEPARTMENT OF TRANSPORTATION	PAVEMENT PATCHING FOR HMA SURFACED PAVEMENT		F.A.I. RTE. 55	SECTION 08(B&B-1)BR	COUNTY WILL	TOTAL SHEETS 72	SHEET NO. 72A
DRAWN -	REVISED - R. BORO 01-01-07		SCALE: NONE	SHEET NO. 1 OF 1 SHEETS	STA.	TO STA.	CONTRACT NO. 62930		
CHECKED -	REVISED - R. BORO 09-04-07		FED. ROAD DIST. NO. 1 [ILLINOIS] FED. AID PROJECT						
DATE - 10-25-94	REVISED - K. ENG 10-27-08								

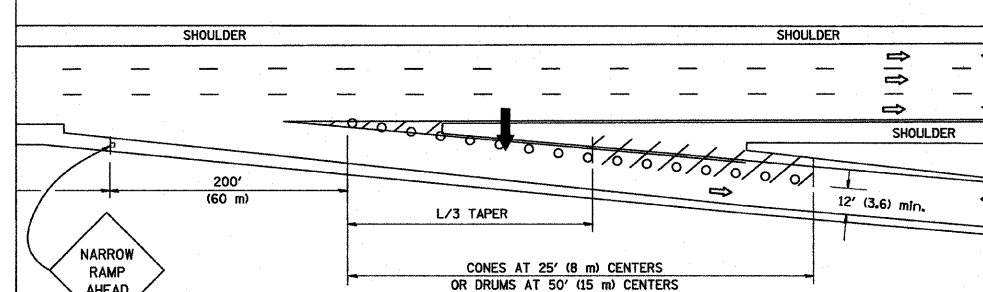
PARTIAL RAMP CLOSURE DETAILS



TYPICAL ENTRANCE RAMP



TYPICAL EXIT RAMP



TYPICAL EXIT RAMP

GENERAL NOTES

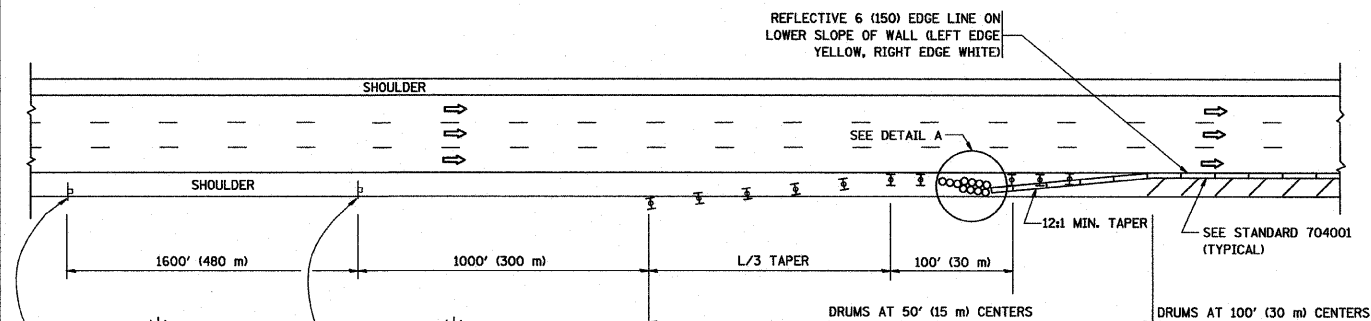
- THE "L" DISTANCE EQUALS:

SPEED LIMIT	FORMULAS
45 mph (80 km/h) OR GREATER	METRIC: $L=0.65(W)(S)$ ENGLISH: $L=(W)(S)$

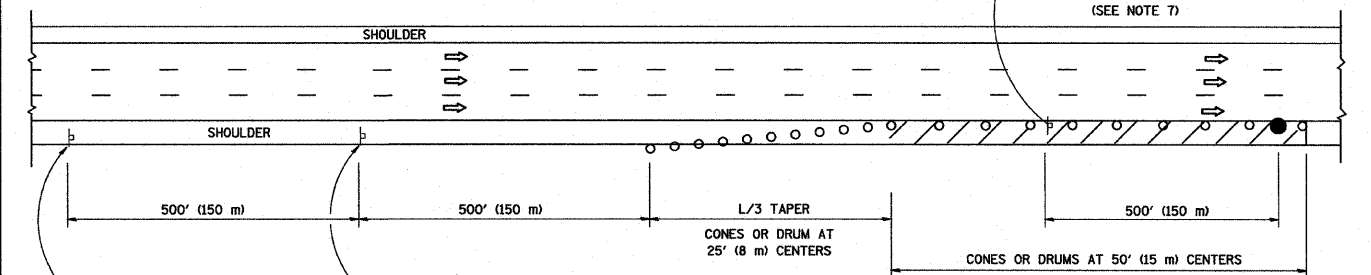
W = WIDTH OF OFFSET IN FEET (METERS)
S = NORMAL POSTED SPEED MPH (KM/H)
- PLASTIC DRUMS WITH HIGH PERFORMANCE REFLECTIVE SHEETING AND STEADY BURNING LIGHTS ARE REQUIRED FOR ALL NIGHTTIME CLOSURES.
- ALL SIGNS SHALL BE POST MOUNTED IF THE CLOSURE TIME EXCEEDS FOUR DAYS.
- FLASHING LIGHTS SHALL BE USED DURING THE HOURS OF DARKNESS AND SHALL BE INSTALLED ABOVE THE FIRST TWO SETS OF SIGNS.

MENT SUPPORT
VERTICAL BARRICADE WITH STEADY LIGHT

SHOULDER CLOSURE DETAILS

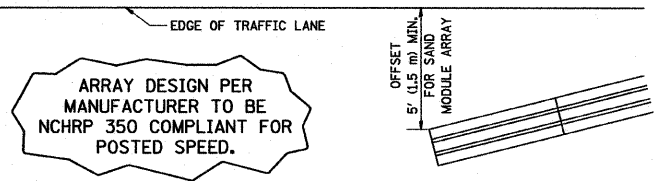


PERMANENT SHOULDER CLOSURE



DAYTIME SHOULDER CLOSURE

THIS DETAIL IS USED WHERE:
1. VEHICLES, EQUIPMENT, WORKERS OR THEIR ACTIVITIES ENCROACH IN AN AREA CLOSER THAN 15' (4.5 m) TO THE EDGE OF PAVEMENT FOR A PERIOD IN EXCESS OF 15 MINUTES.



DETAIL "A"
IMPACT ATTENUATOR, TEMPORARY (SEE NOTE 5)

ALL DIMENSIONS ARE IN INCHES (MILLIMETERS) UNLESS OTHERWISE SHOWN.

DESIGNED -	REVISOR - J.A.F. 12-02
DRAWN - D.W.S.	REVISOR - 04-03
CHECKED -	REVISOR - J.A.F. 12-06
DATE - 11-96	REVISOR - S.P.B. 01-07

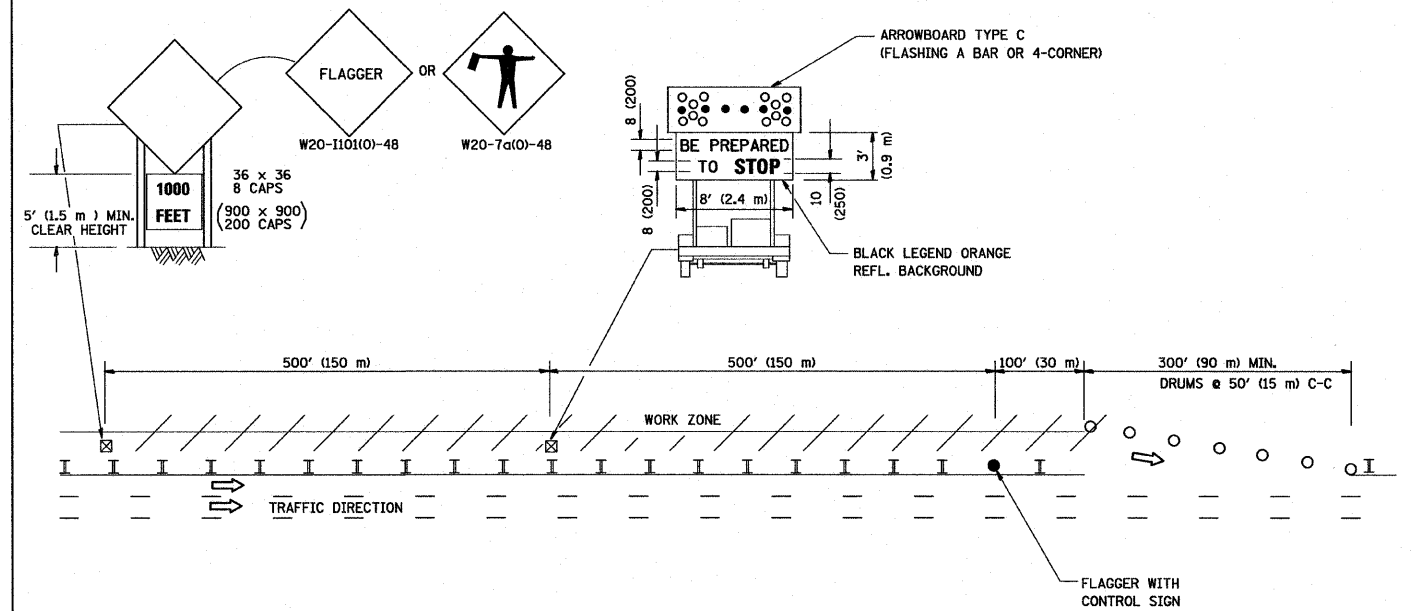
STATE OF ILLINOIS
DEPARTMENT OF TRANSPORTATION

TRAFFIC CONTROL DETAILS FOR FREEWAY SHOULDER CLOSURES AND PARTIAL RAMP CLOSURES		F.A.I. RTE. 55	SECTION 88 (B#B-1) BR	COUNTY WILL	TOTAL SHEETS 72	SHEET NO. 72B
SCALE: NONE	SHEET NO. 1 OF 1 SHEETS	STA. TO STA.	CONTRACT NO. 62930			
FED. ROAD DIST. NO. 1 ILLINOIS FED. AID PROJECT						

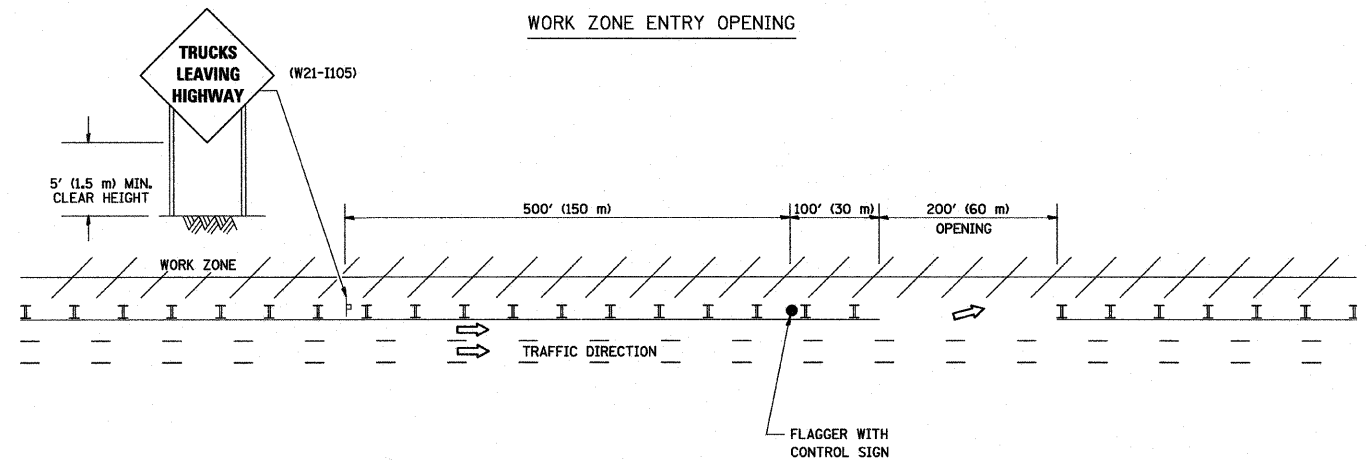
ADDED SHEET 12-30-09

SIGNING FOR FLAGGING OPERATIONS AT WORK ZONE OPENINGS

WORK ZONE EXIT OPENING



WORK ZONE ENTRY OPENING



NOTES:

1. The Arrowboard, the Flagger Ahead trailer mounted sign, and the Trucks Leaving Highway sign shall be removed or turned away from traffic and the exit and entry openings shall be closed when the flagging operation ceases.
2. Work Zone Exit Openings should be a minimum of one half mile apart.
3. Exiting the work zone at any place other than at a Work Zone Exit Opening will be prohibited.
4. All vehicles shall enter the work zone at entry openings, using their turn signals to warn motorists

ALL DIMENSIONS ARE IN INCHES (MILLIMETERS) UNLESS OTHERWISE SHOWN

ADDED SHEET 12-30-09

DESIGNED -	REVISD - D.W.S. 08-98
DRAWN -	REVISD - J.A.F. 04-03
CHECKED -	REVISD - J.A.F. 02-06
DATE -	REVISD - S.P.B. 01-07

STATE OF ILLINOIS
DEPARTMENT OF TRANSPORTATION

SIGNING FOR FLAGGING OPERATIONS
AT WORK ZONE OPENINGS

SCALE: NONE SHEET NO. 1 OF 1 SHEETS STA. TO STA.

F.A.I. RTE.	SECTION	COUNTY	TOTAL SHEETS	SHEET NO.
55	88 (08B-1) OR	WILL	72	72C.
TC-18			CONTRACT NO. 02930	
FED. ROAD DIST. NO. 1 ILLINOIS FED. AID PROJECT				