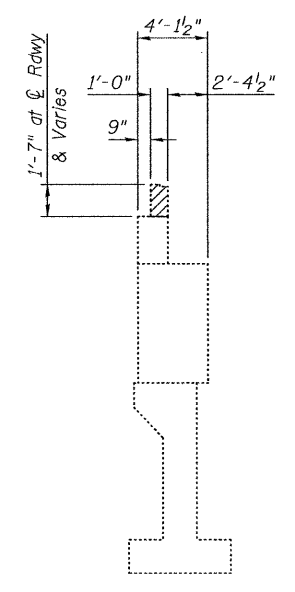
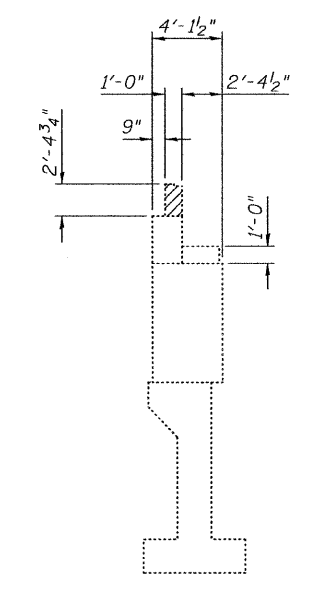


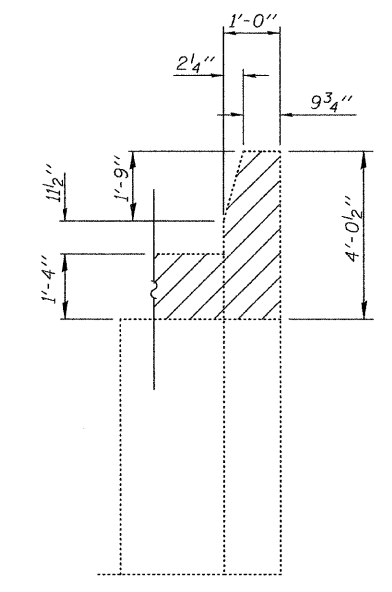
**ELEVATION**



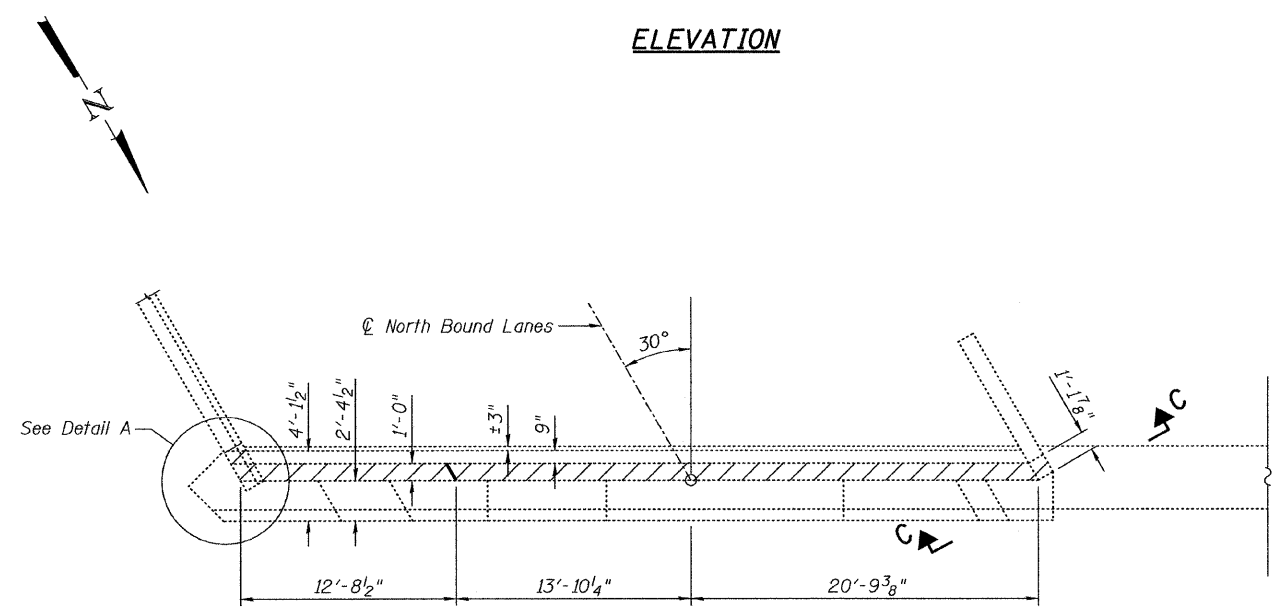
**SECTION A-A**



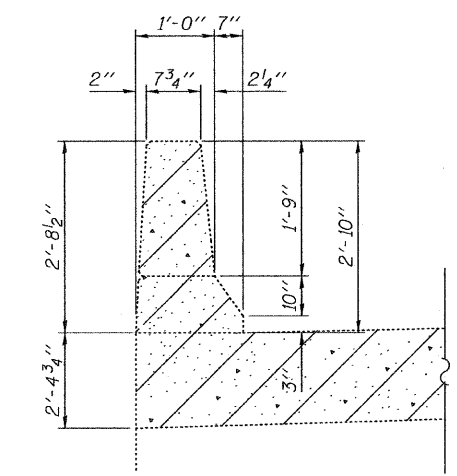
**SECTION B-B**



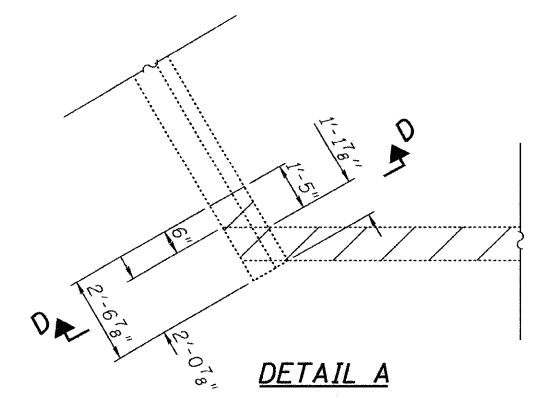
**SECTION C-C**



**PLAN**



**SECTION D-D**



**DETAIL A**

**BILL OF MATERIAL**

Item	Unit	Total
Concrete Removal	Cu Yd	3.4

**NOTES:**

Hatched areas indicate Concrete Removal.  
 Existing vertical reinforcement extending into the New Construction shall be cleaned, straightened and incorporated into the new construction and existing horizontal reinforcement at the wingwalls extending into the new construction shall be cleaned, straightened and incorporated into the new construction. See Sheet 13 of 19. Cost included with Concrete Removal.  
 Any reinforcement bars extending into the new construction that are damaged during Concrete Removal shall be replaced with an approved bar splicer or anchorage system. Cost included with Concrete Removal.  
 Existing reinforcement not extending into areas of new construction shall be cut at the removal line and removed. Exposed portion will be cleaned and coated with a layer of epoxy. Cost included with Concrete Removal.

ILLINOIS DEPARTMENT OF TRANSPORTATION	
SHEET TITLE	
SOUTH ABUTMENT CONCRETE REMOVAL	
PROJECT	PROJECT NO.
I-55 NB OVER KANKAKEE RIVER	03095-16
FAI ROUTE 55, SECTION 88(B&B-1)BR	SCALE
WILL COUNTY	DATE
SN 099-0001	9/23/09
	DRAWN BY
	TFG/CFC
	CHECKED BY
	MCB
DRAWING NO.	
COOMBE-BLOXDORF P.C.	12
Engineers / Land Surveyors	OF 19 SHTS
Springfield, Illinois	
Design Firm License No. 184-002703	

PLOT DATE = 11/23/2009  
 FILE NAME = \\snp-099-0001-ent-12-south-abutment-concrete-removal.dgn  
 PLOT SCALE = 5/4,000 1/4" / IN.  
 USER NAME = CFC