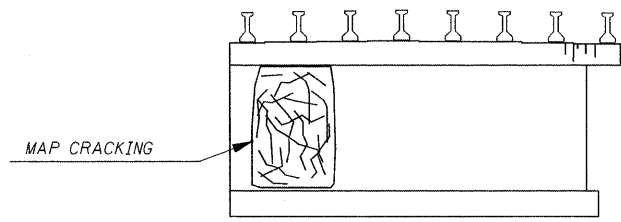
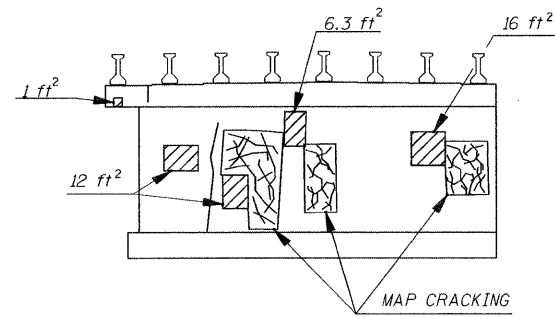


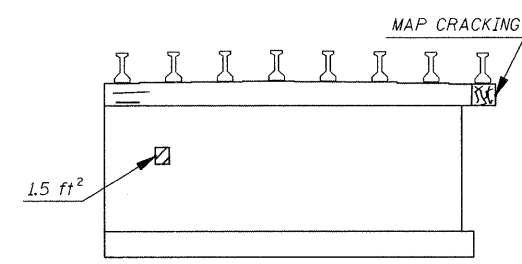
**PIER 7**  
**ELEVATION, SOUTH FACE**  
**(LOOKING NORTH)**



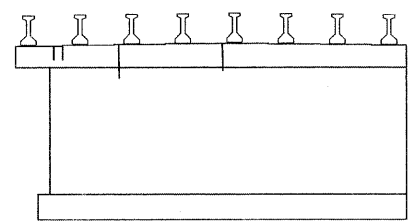
**PIER 7**  
**ELEVATION, NORTH FACE**  
**(LOOKING SOUTH)**



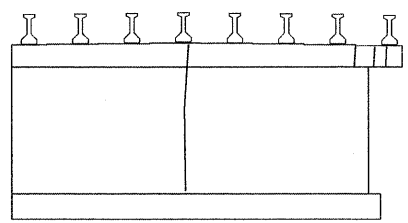
**PIER 8**  
**ELEVATION, SOUTH FACE**  
**(LOOKING NORTH)**



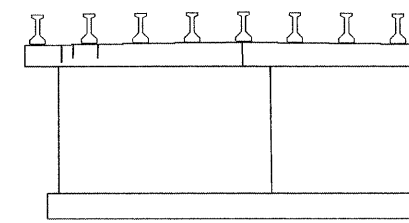
**PIER 8**  
**ELEVATION, NORTH FACE**  
**(LOOKING SOUTH)**



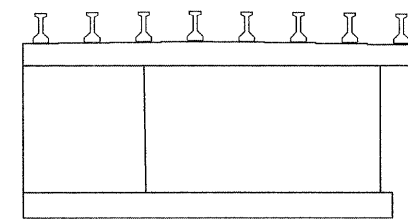
**PIER 9**  
**ELEVATION, SOUTH FACE**  
**(LOOKING NORTH)**



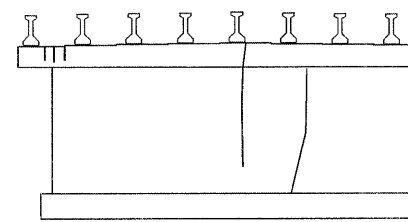
**PIER 9**  
**ELEVATION, NORTH FACE**  
**(LOOKING SOUTH)**



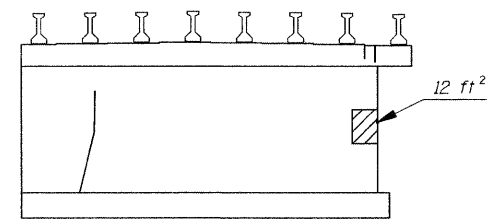
**PIER 10**  
**ELEVATION, SOUTH FACE**  
**(LOOKING NORTH)**



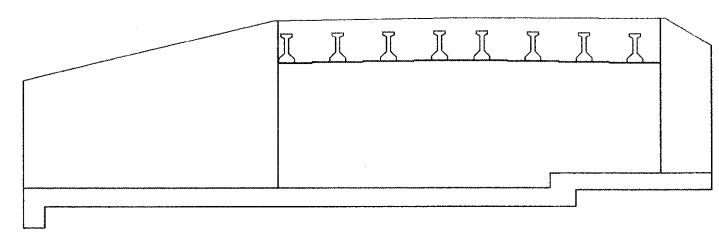
**PIER 10**  
**ELEVATION, NORTH FACE**  
**(LOOKING SOUTH)**



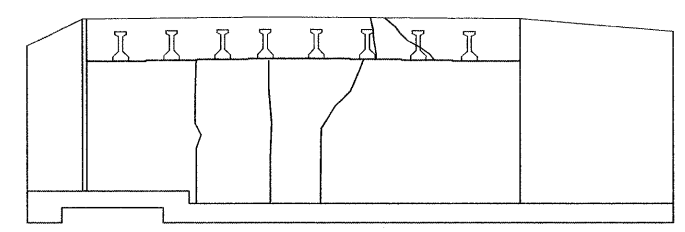
**PIER 11**  
**ELEVATION, SOUTH FACE**  
**(LOOKING NORTH)**



**PIER 11**  
**ELEVATION, NORTH FACE**  
**(LOOKING SOUTH)**



**NORTH ABUTMENT**  
**(LOOKING NORTH)**



**SOUTH ABUTMENT**  
**(LOOKING SOUTH)**

**LEGEND**

- Epoxy Crack Injection
- Structural Repair of Concrete (Depth Equal to or Less Than 5")

**BILL OF MATERIAL**

Item	Unit	Total
Epoxy Crack Injection	Foot	275
Structural Repair of Concrete (Depth Equal to or Less Than 5")	Sq Ft	90

ILLINOIS DEPARTMENT OF TRANSPORTATION

SHEET TITLE  
ABUTMENT AND PIER REPAIRS

PROJECT I-55 SB OVER KANKAKEE RIVER FAI ROUTE 55, SECTION 88(B&B-1)BR WILL COUNTY SN 099-0002	PROJECT NO. 03095-16 SCALE DATE 06/25/09 DRAWN BY CFC CHECKED BY MCB/KPS DRAWING NO.
---	---

**COOMBE-BLOXDORF P.C.**  
Engineers / Land Surveyors  
Springfield, Illinois  
Design Firm License No. 184-002703

9  
OF 9 SHTS

PLOT DATE = 6/25/09  
 PLOT SCALE = 1/8" = 1'-0"  
 PLOT SCALE = 241/5284 1" / IN.  
 USER NAME = JML