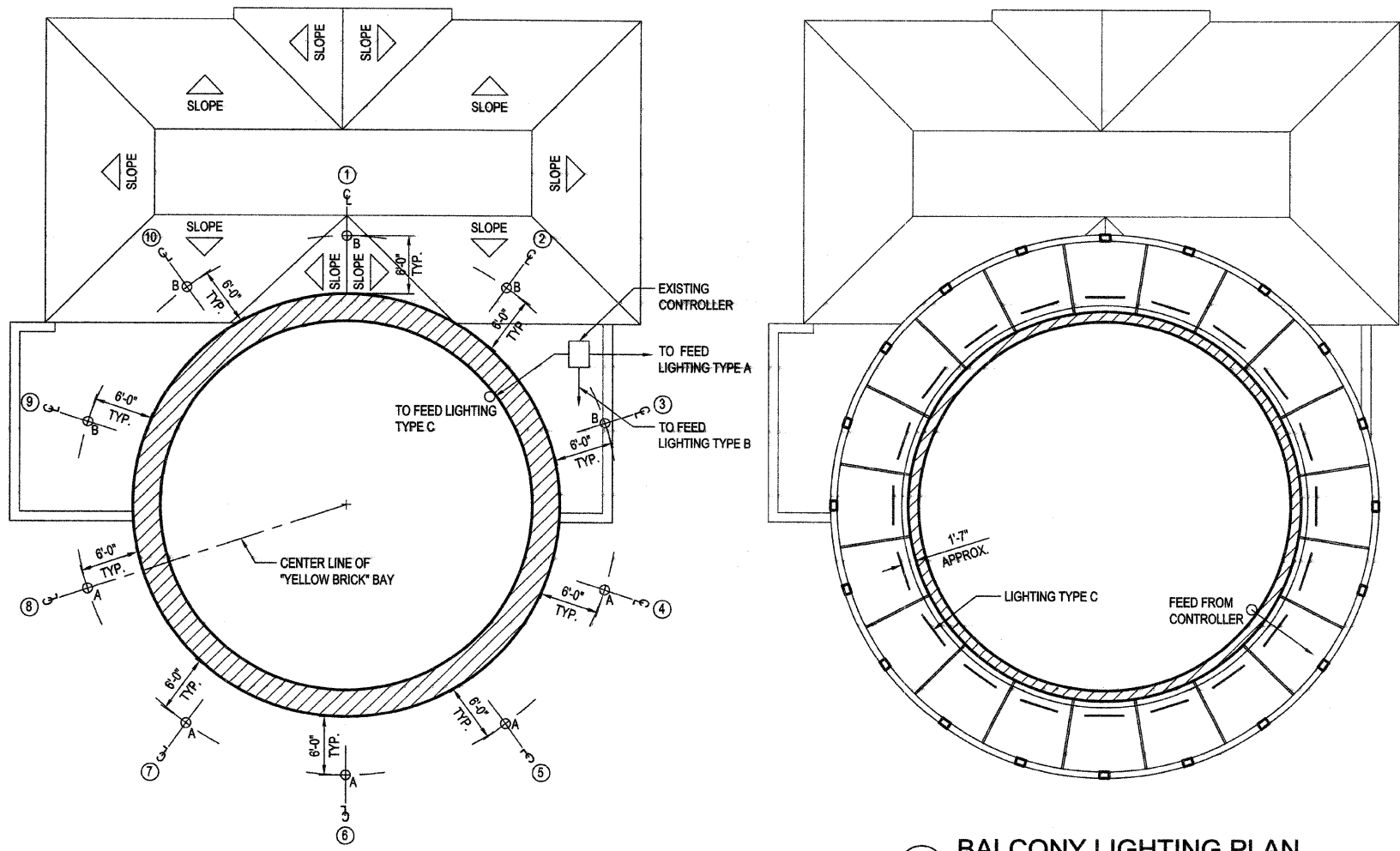


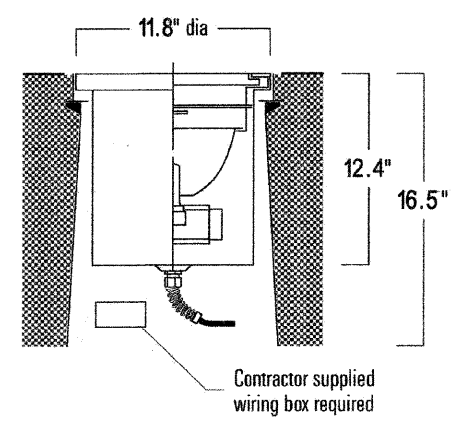
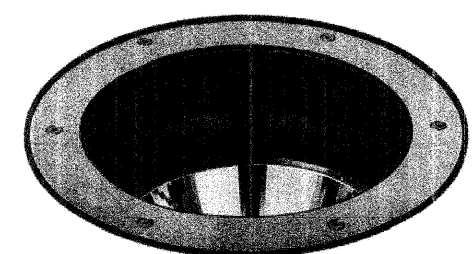
F.A.U. RTE.	SECTION	COUNTY	TOTAL SHEETS	SHEET NO.
1472 & 3569	06-00073-00-LS	COOK	24	21
STA.	TO STA.			
FED. ROAD DIST. NO.	ILLINOIS	FED. AID PROJECT		
CONTRACT NO. 63133				

A-1.0

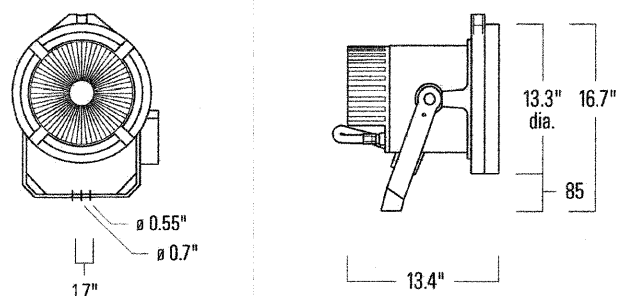
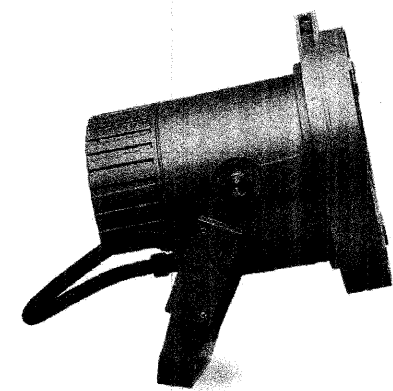


A1 FIRST FLOOR LIGHTING PLAN
SCALE: 1/8" = 1'-0"

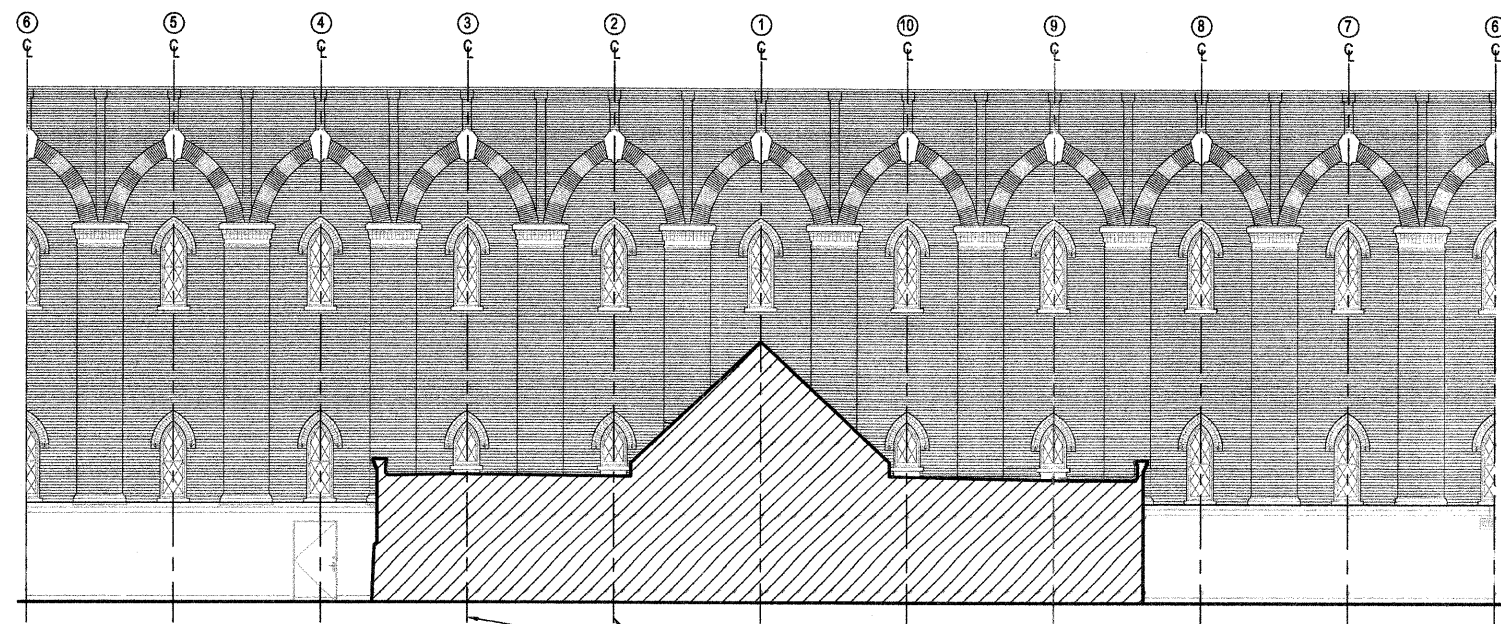
A2 BALCONY LIGHTING PLAN
SCALE: 1/4" = 1'-0"



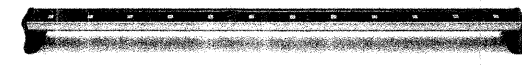
A LIGHTING TYPE A + D
SCALE: NTS



B LIGHTING TYPE B
SCALE: NTS



A3 ELEVATION
SCALE: 1/8" = 1'-0"



C LIGHTING TYPE C
SCALE: NTS

GENERAL NOTES:

- ALL LIGHTING FIXTURES TO BE INSTALLED BY MANUFACTURER'S SPECIAL PROVISIONS AND INSTALLATION INSTRUCTIONS
- IN-GROUND FIXTURES TO BE INSTALLED AND POSITIONED EXACTLY AS SHOWN ON THE PLAN (FOR LIGHTING ACCURACY & UNIFORMITY)
- ALL LIGHTING LOCATIONS SHALL BE CONFIRMED AND VERIFIED IN THE FIELD FOLLOWING THE SCHEDULED LIGHTING DESIGN MOCK-UP AND PRIOR TO FINAL ACCEPTANCE.
- FINAL LOCATION OF IN-GROUND LIGHT UNITS AT THE MUSEUM BUILDINGS (2 PER BUILDING) SHALL BE DETERMINED IN THE FIELD. WIRING AND CONNECTIONS SHALL BE REVIEWED AND APPROVED VIA THE SHOP DRAWING SUBMITTAL.
- CONTRACTOR SHALL VERIFY ALL LIGHTING MODEL AND ACCESSORIES NUMBERS PRIOR TO PURCHASING.

BILL OF MATERIALS			
LIGHT FIXTURE SCHEDULE			
LIGHT	QUANTITY	TYPE	PRODUCT
A	5	GROUND	WE-EF ARCHITECTURAL LIGHTING INGROUND UPLIGHT - ETC130 ASC [VN]
B	5	ROOF	WE-EF ARCHITECTURAL LIGHTING FLOODLIGHT/SYMETRIC - FLC250 F [VN]
C	20	48" LED	ILLUMIVISION HILGHILITE NEUTRAL HL-4-W41
D	4	GROUND	WE-EF ARCHITECTURAL LIGHTING INGROUND UPLIGHT - ETC130 ASC [A]

DLK
Civic Design
The Fine Arts Building
410 South Michigan Avenue
Chicago, Illinois 60605
Tel. 312.322.0911
Fax 312.322.5324
www.dlkc.com

REVISIONS	
NAME	DATE

ILLINOIS DEPARTMENT OF TRANSPORTATION
FAU ROUTES 1472 & 3569
VILLAGE OF RIVERSIDE
RAILWAY/WATER TOWER CAMPUS RESTORATION PROJECT
ARCHITECTURAL LIGHTING LAYOUT
SCALE: 1/8" = 1'-0"
DATE: 12-05-2008
DRAWN BY: EB
CHECKED BY: AT