

STATE OF ILLINOIS  
DEPARTMENT OF TRANSPORTATION  
DIVISION OF HIGHWAYS

PLANS FOR PROPOSED  
FEDERAL AID HIGHWAY  
EAST AVENUE & PINE AVENUE FROM  
FOREST AVE. (F.A.U. 1472) TO LONGCOMMON RD. (F.A.U. 3569)  
SECTION: 06-00073-00-LS  
ROADWAY RESURFACING AND ENHANCEMENT  
PROJECT: TE-00D1(705)  
VILLAGE OF RIVERSIDE  
COOK COUNTY  
C-91-030-07

FOR INDEX OF SHEETS, SEE SHEET NO. 2

TRAFFIC DATA

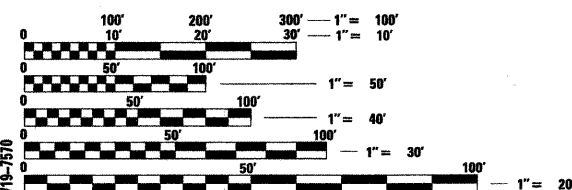
ADT:

EAST AVENUE = 600 (2030)  
PINE AVENUE = 600 (2030)

SPEED LIMIT:

EAST & PINE AVENUE = 20 MPH (POSTED)  
30 MPH (DESIGN)

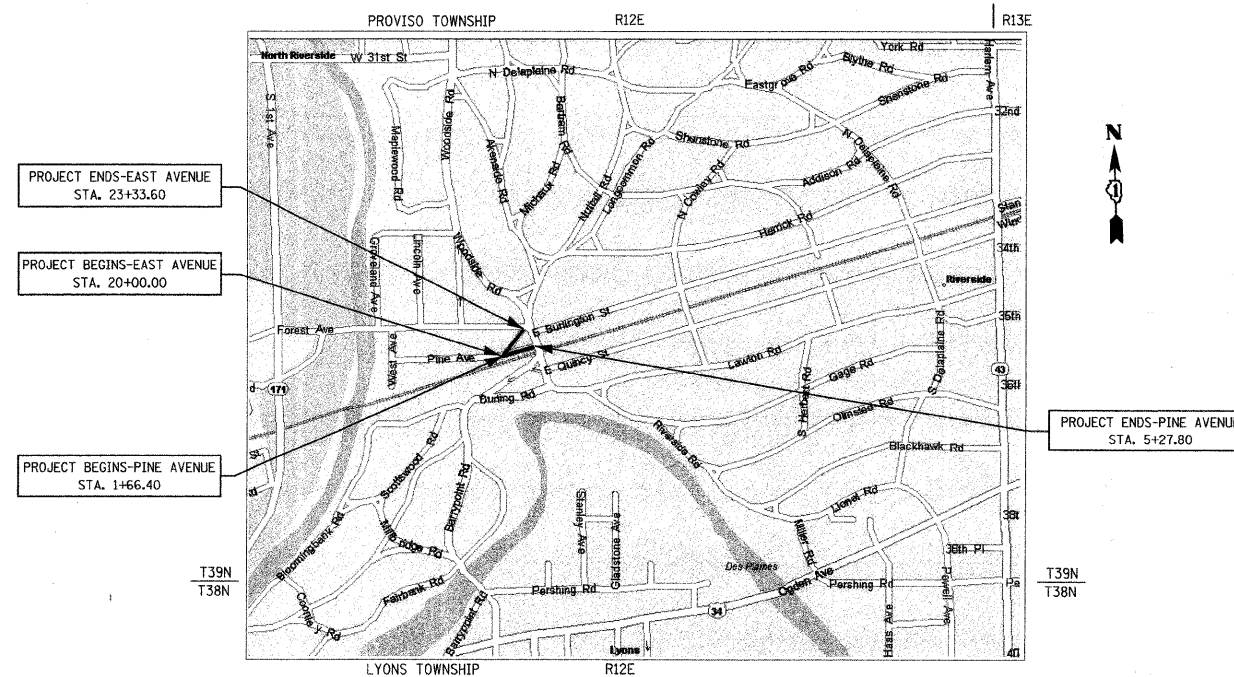
PROJECT LOCATED IN  
VILLAGE OF RIVERSIDE



FULL SIZE PLANS HAVE BEEN PREPARED USING STANDARD ENGINEERING SCALES. REDUCED SIZED PLANS WILL NOT CONFORM TO STANDARD SCALES. IN MAKING MEASUREMENTS ON REDUCED PLANS, THE ABOVE SCALES MAY BE USED.

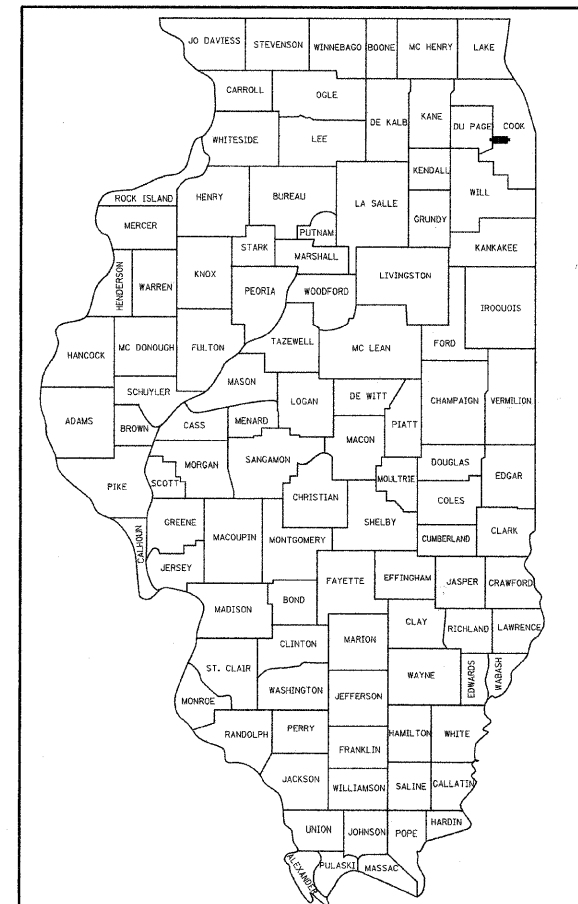
J.U.L.I.E.  
JOINT UTILITY LOCATION INFORMATION FOR EXCAVATION  
1-800-892-0123

CONTRACT NO. 63133  
DESIGN DESIGNATION: LOCAL ROAD



PROVISO TOWNSHIP, SECTION 36  
SCALE: NTS  
GROSS & NET LENGTH OF PROJECT: 695.00 FT. (0.13 MILES)

F.A.U. RTE.	SECTION	COUNTY	TOTAL SHEETS	SHEET NO.
1472 & 3569	06-00073-00-LS	COOK	24	1
FED. ROAD DIST. NO.	ILLINOIS	FED. AID PROJECT		
CONTRACT NO: 63133				



LOCATION OF SECTION INDICATED THUS: - [black rectangle] -

STATE OF ILLINOIS  
DEPARTMENT OF TRANSPORTATION  
DIVISION OF HIGHWAYS

Approved: 3-24-09  
Kathleen F. Rich  
Village of Riverside, Village Manager

Passed: October 27, 2009  
C. Helt  
District #1 Engineer of Local Roads & Streets

Releasing for Bid  
Based on Limited Review: OCTOBER 29, 2009  
Diana M. O'Keefe  
Deputy Director of Highways, Region #1 Engineer

PRINTED BY AUTHORITY OF THE STATE OF ILLINOIS


JJB JAMES J. BENES & ASSOCIATES  
CONSULTING ENGINEERS  
950 WARRENVILLE ROAD, SUITE 101  
LISLE, IL 60532  
(630) 719-7570  
SIGNATURE: [Signature]  
DATE: 3/2/09  
REGISTERED PROFESSIONAL ENGINEER  
IL LICENSE NO: 062-045015  
EXP. DATE: NOVEMBER 2009  
FIELD: JAMES J. BENES & ASSOCIATES, INC.  
CIVIL ENGINEERING  
(SHEETS 1-17)

FIELD ENGINEER: MARILIN SOLOMON (847) 705-4407  
CONSULTANT: JAMES J. BENES & ASSOCIATES, INC. (630) 719-7570



SUMMARY OF QUANTITIES					
CODE NO.	ITEM	UNIT	TOTAL QUANTITY	ROADWAY	LANDSCAPE IMPROVEMENTS
				100% VILLAGE 1000	80% FED 20% VILLAGE Y003
20201200	REMOVAL AND DISPOSAL OF UNSUITABLE MATERIAL	CU YD	522		522
20400800	FURNISHED EXCAVATION	CU YD	40		40
20700420	POROUS GRANULAR EMBANKMENT, SUBGRADE	CU YD	77	77	
21001000	GEOTECHNICAL FABRIC FOR GROUND STABILIZATION	SQ YD	231		231
25200700	SODDING, SPECIAL	SQ YD	1,200		1,200
25200200	SUPPLEMENTAL WATERING	UNIT	26		26
40201000	AGGREGATE FOR TEMPORARY ACCESS	TONS	100		100
40600200	BITUMINOUS MATERIALS (PRIME COAT)	TONS	2	2	
40600300	AGGREGATE (PRIME COAT)	TONS	10	10	
40600400	MIXTURE FOR CRACKS, JOINTS, AND FLANGEWAYS	TONS	4	4	
40600625	LEVELING BINDER (MACHINE METHOD), N50	TONS	105	105	
40600895	CONSTRUCTING TEST STRIP	EACH	1	1	
40600982	HOT-MIX ASPHALT SURFACE REMOVAL - BUTT JOINT	SQ YD	47	47	
40603310	HOT-MIX ASPHALT SURFACE COURSE, MIX "C", N50	TONS	350	350	
42400200	PORTLAND CEMENT CONCRETE SIDEWALK 5 INCH	SQ FT	1,612		1,612
42400800	DETECTABLE WARNINGS	SQ FT	80		80
44000100	PAVEMENT REMOVAL	SQ YD	292		292
44000159	HOT-MIX ASPHALT SURFACE REMOVAL, 2 1/2"	SQ YD	2,263	2,263	
44000500	COMBINATION CURB AND GUTTER REMOVAL	FOOT	788		788
44000600	SIDEWALK REMOVAL	SQ FT	3,921		3,921
44201737	CLASS D PATCHES, TYPE I, 8 INCH	SQ YD	8	8	
44201741	CLASS D PATCHES, TYPE II, 8 INCH	SQ YD	24	24	
44201745	CLASS D PATCHES, TYPE III, 8 INCH	SQ YD	39	39	
44201747	CLASS D PATCHES, TYPE IV, 8 INCH	SQ YD	45	45	
50300300	PROTECTIVE COAT	SQ YD	845		845
56500600	DOMESTIC WATER SERVICE BOXES TO BE ADJUSTED	EACH	1		1
60250400	CATCH BASINS TO BE ADJUSTED WITH NEW TYPE 1 FRAME, OPEN LID	EACH	1		1
60255500	MANHOLES TO BE ADJUSTED	EACH	1		1
60255800	MANHOLES TO BE ADJUSTED WITH NEW TYPE 1 FRAME, CLOSED LID	EACH	8	6	2
60258200	MANHOLES TO BE RECONSTRUCTED WITH NEW TYPE 1 FRAME, CLOSED LID	EACH	1	1	
60265700	VALVE VAULTS TO BE ADJUSTED	EACH	1		1
60265900	VALVE VAULTS TO BE ADJUSTED WITH NEW TYPE 1 FRAME, CLOSED LID	EACH	3		3
60266600	VALVE BOXES TO BE ADJUSTED	EACH	1		1
60603800	COMBINATION CONCRETE CURB AND GUTTER, TYPE B-6.12	FOOT	555		555
60608300	COMBINATION CONCRETE CURB AND GUTTER, TYPE M-2.12	FOOT	30		30
67100100	MOBILIZATION	L SUM	1		1

SUMMARY OF QUANTITIES					
CODE NO.	ITEM	UNIT	TOTAL QUANTITY	ROADWAY	LANDSCAPE IMPROVEMENTS
				100% VILLAGE 1000	80% FED 20% VILLAGE Y003
70102620	TRAFFIC CONTROL AND PROTECTION, STANDARD 701501	L SUM	1		1
70102640	TRAFFIC CONTROL AND PROTECTION, STANDARD 701801	L SUM	1		1
70300100	SHORT-TERM PAVEMENT MARKING	FOOT	500	500	
72000100	SIGN PANEL-TYPE 1	SQ FT	2		2
72900200	METAL POST - TYPE B	FOOT	14		14
78000100	THERMOPLASTIC PAVEMENT MARKING - LETTERS & SYMBOLS	SQ FT	77.4	77.4	
78000200	THERMOPLASTIC PAVEMENT MARKING - LINE 4"	FOOT	978	978	
78000400	THERMOPLASTIC PAVEMENT MARKING - LINE 6"	FOOT	272		272
78000500	THERMOPLASTIC PAVEMENT MARKING - LINE 8"	FOOT	155	155	
78000600	THERMOPLASTIC PAVEMENT MARKING - LINE 12"	FOOT	181		181
78000650	THERMOPLASTIC PAVEMENT MARKING - LINE 24"	FOOT	35	35	
81400100	HANDHOLE	EACH	1		1
81400115	HANDHOLE TO BE ADJUSTED	EACH	1		1
89502380	REMOVE EXISTING HANDHOLE	EACH	1		1
B2001167	TREE, CERCIS CANADENSIS (EASTERN REDBUD) 8' HEIGHT, BALLED AND BURLAPPED	EACH	3		3
C2C019G5	SHRUB, ARONIA MELANOCARPA 'IROQUOIS BEAUTY' (IROQUOIS BEAUTY BLACK CHOKEBERRY), 24-INCH HEIGHT, 5-GALLON CONTAINER	EACH	25		25
C2C074G5	SHRUB, ROSA 'RADCON' (RADCON PINK KNOCK-OUT ROSE), 24-INCH HEIGHT, 5-GALLON CONTAINER	EACH	27		27
K1003680	MULCH	SQ YD	345		345
X0301407	PERENNIAL PLANTS, GALLON POT	UNIT	9		9
X0301895	PERENNIAL PLANTS, QUART POT	UNIT	9		9
XX001621	BRICK PAVER REMOVAL	SQ FT	30		30
XX006561	PORTLAND CEMENT CONCRETE SIDEWALK 5", SPECIAL (SWANEE MIX)	SQ FT	4,845		4,845
XX006668	HANDHOLE TO BE ADJUSTED WITH NEW FRAME AND COVER	EACH	1		1
X200793Z	TREE, TILIA AMERICANA REDMOND (REDMOND AMERICAN LINDEN), 4" CALIPER, BALLED AND BURLAPPED	EACH	3		3
XX007973	COMBINATION CONCRETE CURB AND GUTTER, TYPE B-3.12	FOOT	20		20
X44201737	CLASS D PATCHES, TYPE I, 2 INCH	SQ YD	8	8	
X44201741	CLASS D PATCHES, TYPE II, 2 INCH	SQ YD	24	24	
X44201745	CLASS D PATCHES, TYPE III, 2 INCH	SQ YD	39	39	
X44201747	CLASS D PATCHES, TYPE IV, 2 INCH	SQ YD	45	45	
XX007978	ARCHITECTURAL LIGHTING SYSTEM	EACH	1		1
XX007979	ORNAMENTAL METAL RAILING SYSTEM	FOOT	32		32
XX007980	PLANTING SOIL, FURNISH AND PLACE, 24"	SQ YD	240		240
Z0013798	CONSTRUCTION LAYOUT	L SUM	1		1
Z0048865	RAILROAD PROTECTIVE LIABILITY INSURANCE	L SUM	1		1

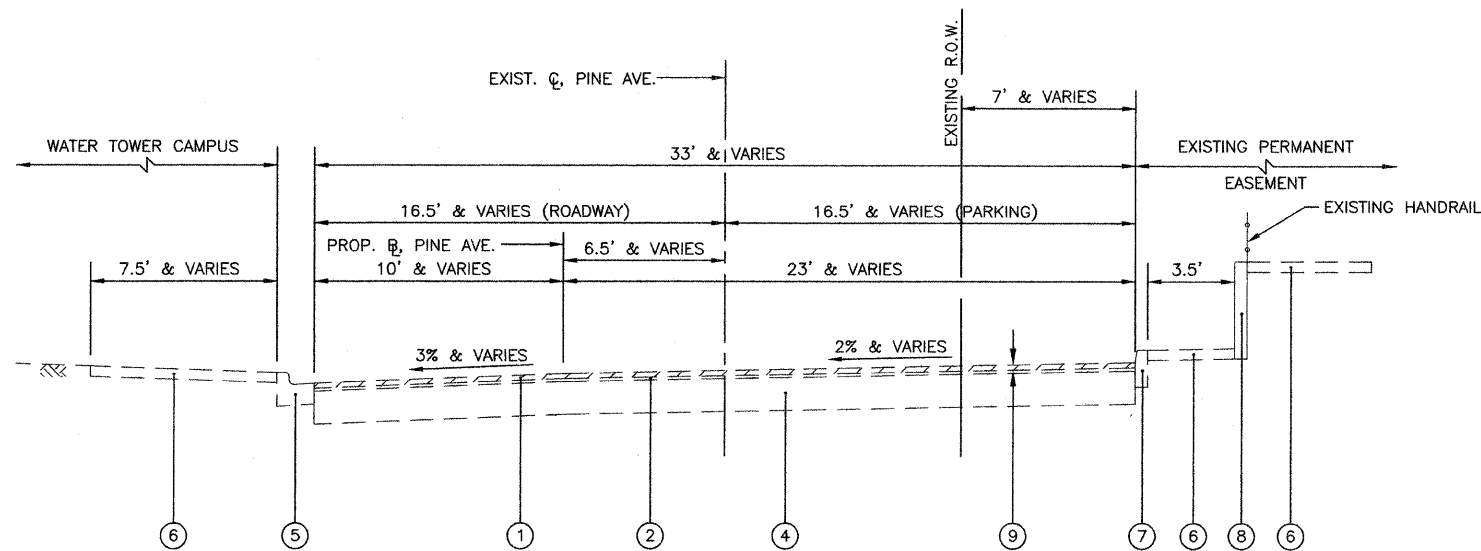
LEGEND  
 - DENOTES SPECIALTY ITEMS

REVISIONS		ILLINOIS DEPARTMENT OF TRANSPORTATION FAU ROUTES 1472 & 3569 VILLAGE OF RIVERSIDE RAILWAY/WATER TOWER CAMPUS RESTORATION PROJECT
NAME	DATE	
		SUMMARY OF QUANTITIES

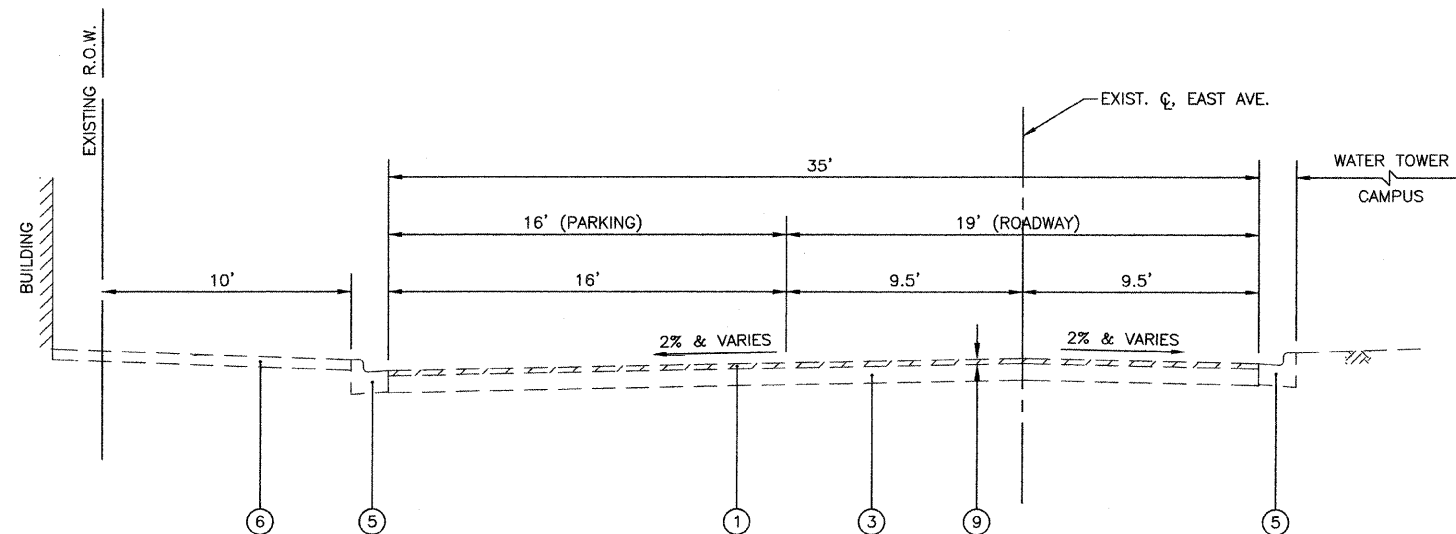
SCALE: NTS  
DATE: 12/01/08

DRAWN BY SMP  
CHECKED BY BDH

F.A.U. RTE.	SECTION	COUNTY	TOTAL SHEETS	SHEET NO.
4724 3363	06-00073-00-LS	COOK	24	4
STA.	TO STA.			
FED. ROAD DIST. NO.	ILLINOIS	FED. AID PROJECT		
CONTRACT NO. 63133				



**EXISTING TYPICAL SECTION - PINE AVENUE  
STA. 1+66.40 TO STA. 5+27.80**



**EXISTING TYPICAL SECTION - EAST AVENUE  
STA. 20+00 TO STA. 23+33.60**

**LEGEND**

- ① EXISTING HOT-MIX ASPHALT SURFACE COURSE, 2 1/2" & VARIES
- ② EXISTING HOT-MIX ASPHALT PAVEMENT, 1 1/2" & VARIES
- ③ EXISTING P.C.C. BASE COURSE, 8" & VARIES
- ④ EXISTING AGGREGATE BASE COURSE, 16" & VARIES
- ⑤ EXISTING CONCRETE CURB & GUTTER, TYPE B-6.12
- ⑥ EXISTING P.C.C. SIDEWALK
- ⑦ EXISTING CONCRETE CURB, TYPE B
- ⑧ EXISTING RETAINING WALL
- ⑨ HOT-MIX ASPHALT SURFACE REMOVAL, 2 1/2"

REVISIONS	
NAME	DATE

ILLINOIS DEPARTMENT OF TRANSPORTATION  
EAST AVENUE TO PINE AVENUE  
VILLAGE OF RIVERSIDE  
RAILWAY/WATER TOWER CAMPUS RESTORATION PROJECT

**EXISTING TYPICAL SECTIONS**

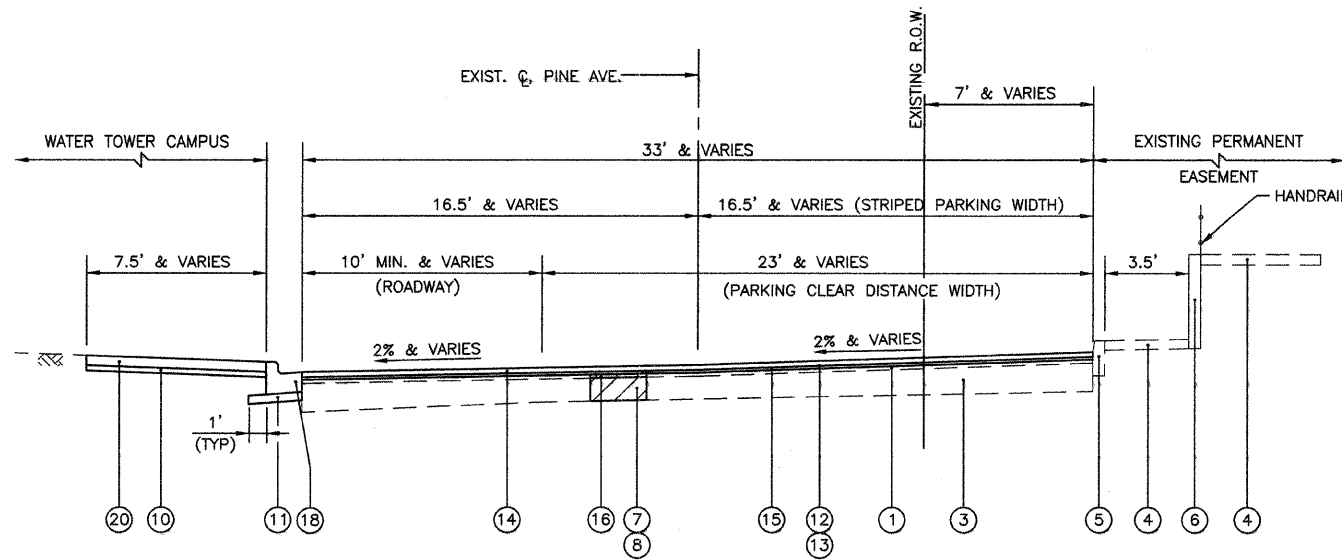
SCALE: 1"=20'  
DATE: 12/01/08

DRAWN BY: SMP  
CHECKED BY: BDH

F.A.U. RTE.	SECTION	COUNTY	TOTAL SHEETS	SHEET NO.
4724 3568	06-00073-00-LS	COOK	24	5
STA.	TO STA.		FED. AID PROJECT	
			CONTRACT NO. 63133	

HOT-MIX ASPHALT MIXTURE REQUIREMENTS	
MIXTURE TYPE	VOIDS
PAVEMENT RESURFACING	
HOT-MIX ASPHALT SURFACE COURSE, MIX "C" N50, 2 1/2" (IL-9.5mm)	4% @ 50 Gyr.
LEVEL BINDER (MACHINE METHOD), N50, (IL-9.5mm)	4% @ 50 Gyr.
PATCHING	
CLASS D PATCHES, 2" (HMA BINDER IL-19mm)	4% @ 70 Gyr.
CLASS D PATCHES, 8" (HMA BINDER IL-19mm)	4% @ 70 Gyr.

NOTE: 1) THE UNIT WEIGHT USED TO CALCULATE ALL HMA QUANTITIES IS 112 LB/SY/IN  
 2) THE "AC TYPE" FOR POLYMERIZED HMA MIXES SHALL BE "SBS/SBR PG 70-22" AND FOR NON-POLYMERIZED HMA THE "AC TYPE" SHALL BE "PG 64-22" UNLESS MODIFIED BY DISTRICT ONE SPECIAL PROVISIONS FOR "PERCENT OF RAP" SEE DISTRICT ONE SPECIAL PROVISIONS.



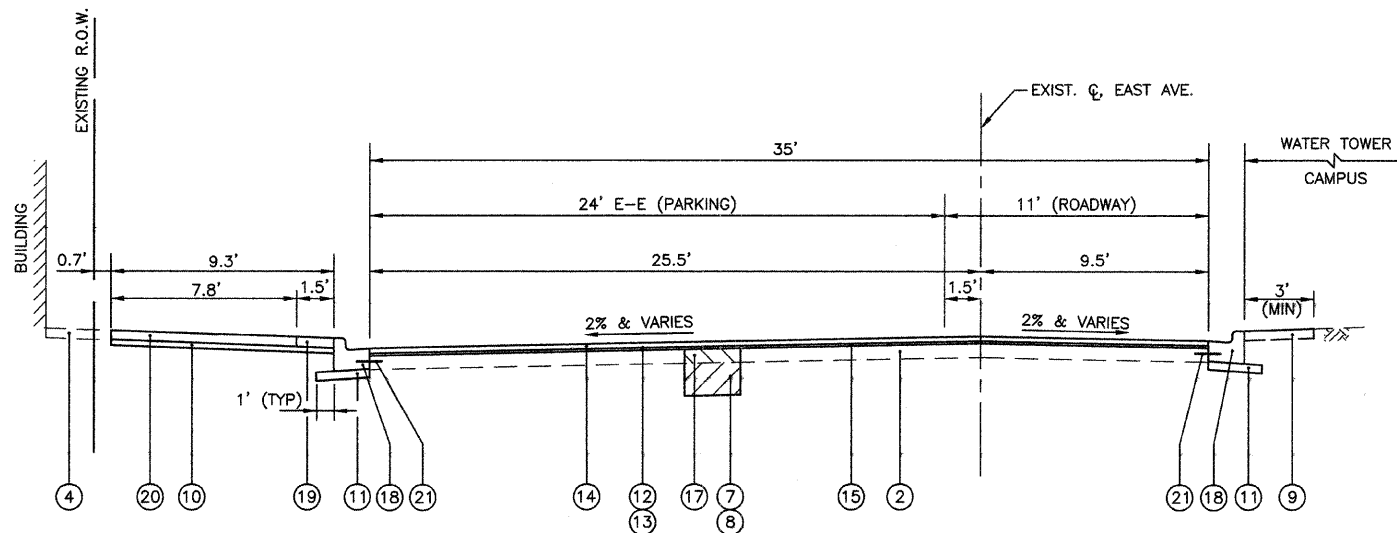
**PROPOSED TYPICAL SECTION - PINE AVENUE**  
 STA. 1+66.40 TO STA. 5+27.80

PAVEMENT DESIGN CALCULATIONS			
DATE: NOVEMBER 18, 2008			
IMPROVEMENT TYPE: FLEXIBLE PAVEMENT CROSS SECTION (RESURFACING)			
LOCATION: PINE AVENUE			
CLASSIFICATION OF ROADWAY: CLASS III ROADWAY (ADT > 400 AND < OR = 2000)			
TRAFFIC FACTOR = $DP((0.073^{PV}) + (44.350^{SU}) + (154.943^{MU})) / 1000000$			
DESIGN LANE VOL. % OF ADT	100 % TRUCKS	50 % PASS. VEHICLES	
DESIGN PERIOD, YEARS (DP)	20 YEARS		
% OF PASSENGER VEHICLES	98.00 %		
% OF SINGLE UNIT TRUCKS	1.90 %		
% OF MULTI UNIT TRUCKS	0.10 %		
AVERAGE DAILY TRAFFIC	= 600	TRAFFIC FACTOR	0.012830
NO. OF PASSENGER VEHICLES (PV)	= 588		
NO. OF SINGLE UNIT TRUCKS (SU)	= 11	I.B.R.	2.5
NO. OF MULTI UNIT TRUCKS (MU)	= 1	STRUCTURAL NUMBER (Sn)	2.20
MATERIAL THICKNESS	STRUCTURAL MATERIAL	COEFFICIENT	Dt
2.50	HOT-MIX ASPHALT SURFACE COURSE, MIX C, N50	0.40	1.00
1.50	EXIST. HMA BINDER COURSE	0.22	0.33
16.00	EXIST. SUBBASE GRAN. MATL.	0.08	1.28
TOTAL Dt Provided =			2.61

**PINE AVENUE**

PAVEMENT DESIGN CALCULATIONS			
DATE: NOVEMBER 18, 2008			
IMPROVEMENT TYPE: COMPOSITE PAVEMENT CROSS SECTION (RESURFACING)			
LOCATION: EAST AVENUE			
CLASSIFICATION OF ROADWAY: CLASS III ROADWAY (ADT > 400 AND < OR = 2000)			
TRAFFIC FACTOR = $DP((0.073^{PV}) + (44.350^{SU}) + (154.943^{MU})) / 1000000$			
DESIGN LANE VOL. % OF ADT	100 % TRUCKS	50 % PASS. VEHICLES	
DESIGN PERIOD, YEARS (DP)	20 YEARS		
% OF PASSENGER VEHICLES	98.00 %		
% OF SINGLE UNIT TRUCKS	1.90 %		
% OF MULTI UNIT TRUCKS	0.10 %		
AVERAGE DAILY TRAFFIC	= 600	TRAFFIC FACTOR	0.012830
NO. OF PASSENGER VEHICLES (PV)	= 588		
NO. OF SINGLE UNIT TRUCKS (SU)	= 11	I.B.R.	2.5
NO. OF MULTI UNIT TRUCKS (MU)	= 1	COMPOSITE STRUCTURAL NUMBER (Sn)	2.00
MATERIAL THICKNESS	STRUCTURAL MATERIAL	COEFFICIENT	Dt
2.50	HOT-MIX ASPHALT SURFACE COURSE, MIX C, N50	0.40	1.00
8.00	EXIST. P.C.C. PAVEMENT	0.17	1.36
0.00	EXIST. SUBBASE GRAN. MATL.	0.08	0.00
TOTAL Dt Provided =			2.36

**EAST AVENUE**



**PROPOSED TYPICAL SECTION - EAST AVENUE**  
 STA. 20+00 TO STA. 23+33.60

- LEGEND
- EXISTING HMA PAVEMENT, 1 1/2" & VARIES
  - EXISTING P.C.C. BASE COURSE, 8" & VARIES
  - EXISTING AGGREGATE BASE COURSE, 16" & VARIES
  - EXISTING P.C.C. SIDEWALK
  - EXISTING CONCRETE CURB, TYPE B
  - EXISTING RETAINING WALL
  - POROUS GRANULAR EMBANKMENT, SUBGRADE (AT LOCATIONS DESIGNATED BY THE ENGINEER)
  - GEOTECHNICAL FABRIC FOR GROUND STABILIZATION (AT LOCATIONS DESIGNATED BY THE ENGINEER)
  - SODDING, SPECIAL (INCLUDES 4" PULVERIZED TOP SOIL AND FERTILIZER) (AT LOCATIONS DESIGNATED BY THE ENGINEER)
  - SUB-BASE GRANULAR MATERIAL, TYPE B 2" (COST INCLUDED IN P.C.C. SIDEWALK)
  - SUB-BASE GRANULAR MATERIAL, TYPE B 4" (COST INCLUDED IN CONCRETE CURB AND GUTTER)
  - BITUMINOUS MATERIALS (PRIME COAT)
  - AGGREGATE (PRIME COAT)
  - HOT-MIX ASPHALT SURFACE COURSE, MIX "C", N50, 2 1/2"
  - LEVELING BINDER (MACHINE METHOD), N70, VARIABLE THICKNESS (MINIMUM 3/4" THICKNESS)
  - CLASS D PATCHES, 2" (AT LOCATIONS DESIGNATED BY THE ENGINEER)
  - CLASS D PATCHES, 8" (AT LOCATIONS DESIGNATED BY THE ENGINEER)
  - COMBINATION CONCRETE CURB AND GUTTER, TYPE B-6.12 (THICKNESS OF GUTTER FLAG SHALL BE 10' EXCEPT WHERE ADJACENT TO PCC PAVEMENT. WHEN ADJACENT TO PCC PAVEMENT, BOTTOM OF GUTTER SHALL BE AT THE SAME GRADE AS THE BOTTOM OF THE P.C.C. PAVEMENT)
  - PORTLAND CEMENT CONCRETE SIDEWALK 5" (AT LOCATIONS SHOWN ON THE PLANS OR AS DIRECTED BY THE ENGINEER)
  - PORTLAND CEMENT CONCRETE SIDEWALK 5", SPECIAL (SWANEE MIX) (AT LOCATIONS SHOWN ON THE PLANS OR AS DIRECTED BY THE ENGINEER)
  - 24" LONG DEFORMED EPOXY-COATED NO. 6 TIE BARS, 24" CTRS. DRILLED AND GROUTED IN PLACE (COST INCLUDED IN CONCRETE CURB AND GUTTER)

REVISIONS	
NAME	DATE

ILLINOIS DEPARTMENT OF TRANSPORTATION  
 EAST AVENUE TO PINE AVENUE  
 VILLAGE OF RIVERSIDE  
 RAILWAY/WATER TOWER CAMPUS RESTORATION PROJECT

PROPOSED TYPICAL SECTIONS

SCALE: 1"=20'  
 DATE: 12/01/08

DRAWN BY: SMP  
 CHECKED BY: BDH

FAU RTE.	SECTION	COUNTY	TOTAL SHEETS	SHEET NO.
1472 & 3569	06-00073-00-LS	COOK	24	6
STA.		TO STA.		
FED. ROAD DIST. NO.		ILLINOIS FED. AID PROJECT		
CONTRACT NO. 63133				

EARTHWORK		
LOCATION	REMOVAL & DISPOSAL OF UNSUITABLE MAT.* (CU YD)	FURNISHED EXCAVATION** (CU YD)
RAILWAY/WATER TOWER CAMPUS AREA	415	40
EAST AVE. AND PINE AVE. LANDSCAPE RESTORATION	30	0
EAST AVE. AND PINE AVE. UNDERCUTS	77	0
<b>TOTAL QUANTITY =</b>	<b>522</b>	<b>40</b>

\*ALL CUT MATERIAL SHALL BE HAULED OFF SITE DUE TO NO ONSITE STORAGE LOCATIONS.  
 \*\*ALL FILL MATERIAL (EMBANKMENT) SHALL BE BROUGHT IN FROM OFFSITE LOCATION, SINCE THE ONSITE EXCAVATED MATERIAL MUST BE HAULED OFF SITE.

CATCH BASINS TO BE ADJUSTED WITH NEW TYPE 1 FRAME, OPEN LID		
STATION	OFFSET (FEET)	QUANTITY (EACH)
<u>EAST AVENUE</u> 20+97	9.5' RT	1
<b>TOTAL QUANTITY =</b>		<b>1</b>

VALVE VAULTS TO BE ADJUSTED		
STATION	OFFSET (FEET)	QUANTITY (EACH)
<u>PINE AVENUE</u> 3+88	18' LT	1
<b>TOTAL QUANTITY =</b>		<b>1</b>

HANDHOLE		
STATION	OFFSET (FEET)	QUANTITY (EACH)
<u>EAST AVENUE</u> 21+84	17' RT	1
<b>TOTAL QUANTITY =</b>		<b>1</b>

MANHOLES TO BE ADJUSTED		
STATION	OFFSET (FEET)	QUANTITY (EACH)
<u>EAST AVENUE</u> 21+03	13' LT	1
<b>TOTAL QUANTITY =</b>		<b>1</b>

VALVE VAULTS TO BE ADJUSTED WITH NEW TYPE 1 FRAME, CLOSED LID		
STATION	OFFSET (FEET)	QUANTITY (EACH)
<u>EAST AVENUE</u> 21+96	10' LT	1
22+07	17' RT	1
22+15	17' RT	1
<b>TOTAL QUANTITY =</b>		<b>3</b>

HANDHOLE TO BE ADJUSTED		
STATION	OFFSET (FEET)	QUANTITY (EACH)
<u>PINE AVENUE</u> 3+17	21' LT	1
<b>TOTAL QUANTITY =</b>		<b>1</b>

MANHOLES TO BE ADJUSTED WITH NEW TYPE 1 FRAME, CLOSED LID		
STATION	OFFSET (FEET)	QUANTITY (EACH)
<u>PINE AVENUE</u> 1+80	2' LT	1
2+42	1' RT	1
2+81	18' RT	1
4+11	5' RT	1
4+70	6' RT	1
4+97	10' LT	1
<u>EAST AVENUE</u> 22+06	56' RT	1
23+12	9' LT	1
<b>TOTAL QUANTITY =</b>		<b>8</b>

VALVE BOXES TO BE ADJUSTED		
STATION	OFFSET (FEET)	QUANTITY (EACH)
<u>PINE AVENUE</u> 4+04	30' LT	1
<b>TOTAL QUANTITY =</b>		<b>1</b>

REMOVE EXISTING HANDHOLE		
STATION	OFFSET (FEET)	QUANTITY (EACH)
<u>EAST AVENUE</u> 21+84	17' RT	1
<b>TOTAL QUANTITY =</b>		<b>1</b>

MANHOLES TO BE RECONSTRUCTED WITH NEW TYPE 1 FRAME, CLOSED LID		
STATION	OFFSET (FEET)	QUANTITY (EACH)
<u>PINE AVENUE</u> 4+92	16' RT	1
<b>TOTAL QUANTITY =</b>		<b>1</b>

HANDHOLE TO BE ADJUSTED WITH NEW FRAME AND COVER		
STATION	OFFSET (FEET)	QUANTITY (EACH)
<u>PINE AVENUE</u> 3+96	39' LT	1
<b>TOTAL QUANTITY =</b>		<b>1</b>

REVISIONS	
NAME	DATE

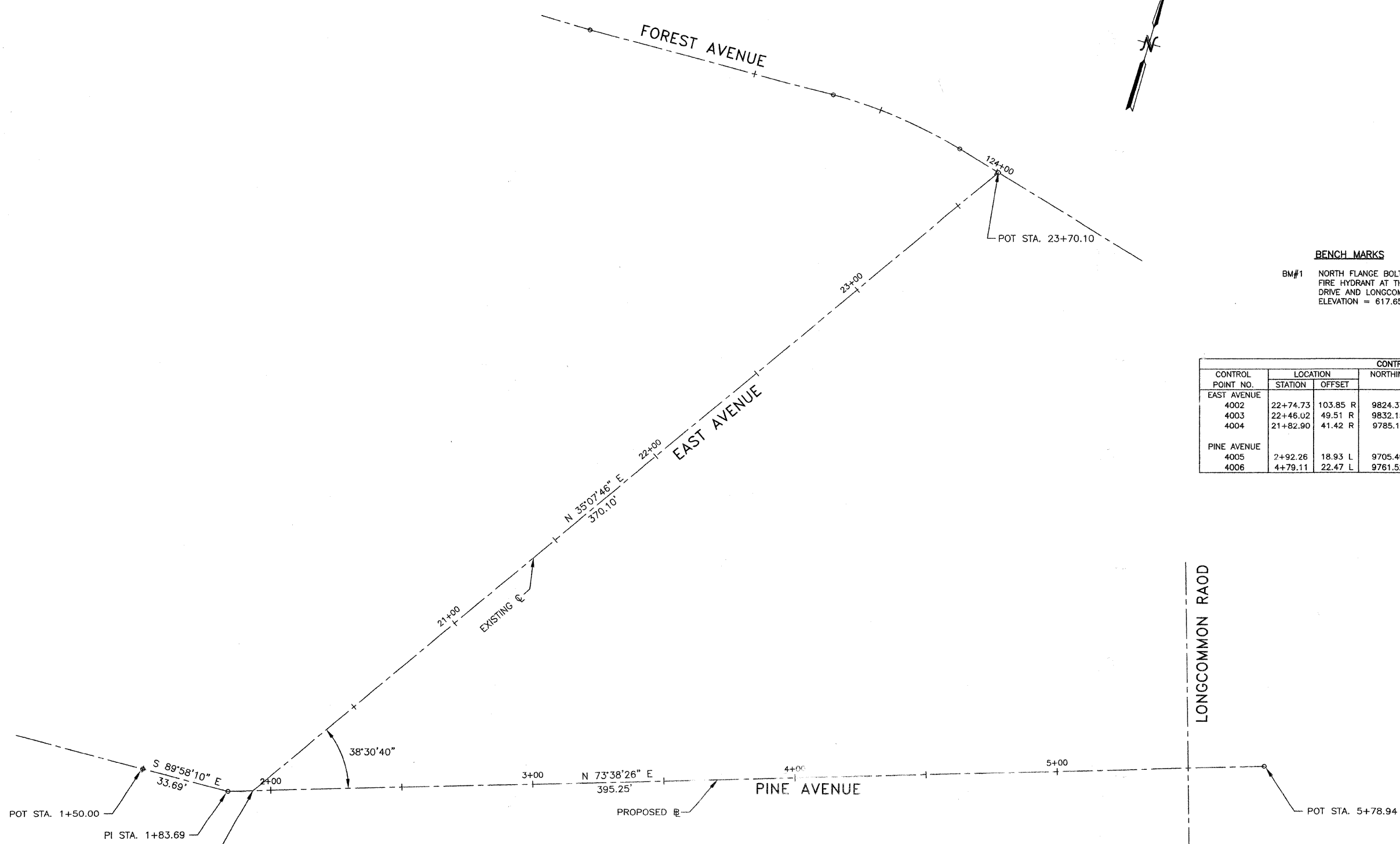
ILLINOIS DEPARTMENT OF TRANSPORTATION  
 FAU ROUTES 1472 & 3569  
 VILLAGE OF RIVERSIDE  
 RAILWAY/WATER TOWER CAMPUS RESTORATION PROJECT

SCHEDULE OF QUANTITIES

SCALE: N/A  
 DATE: 12/01/08

DRAWN BY SMP  
 CHECKED BY BDH

F.A.U. RTE.	SECTION	COUNTY	TOTAL SHEETS	SHEET NO.
1472 & 3569	06-00073-00-LS	COOK	24	7
STA.		TO STA.		
FED. ROAD DIST. NO.	ILLINOIS	FED. AID PROJECT		
CONTRACT NO. 63133				



**BENCH MARKS**

BM#1 NORTH FLANGE BOLT ON FIRE HYDRANT.  
FIRE HYDRANT AT THE INTERSECTION OF WOODSIDE  
DRIVE AND LONGCOMMON ROAD.  
ELEVATION = 617.65

CONTROL POINT NO.	LOCATION		NORTHING	EASTING	ELEV	DESCRIPTION
	STATION	OFFSET				
<b>EAST AVENUE</b>						
4002	22+74.73	103.85 R	9824.3726	9997.6200	617.46	CUT CROSS
4003	22+46.02	49.51 R	9832.1592	9936.6554	617.10	CUT CROSS
4004	21+82.90	41.42 R	9785.1911	9893.7285	616.60	PK NAIL
<b>PINE AVENUE</b>						
4005	2+92.26	18.93 L	9705.4997	9844.2931	616.70	CUT CROSS
4006	4+79.11	22.47 L	9761.5254	10022.5763	616.50	CUT CROSS

STA. 1+93.23 (PINE AVE.)  
STA. 20+00.00 (EAST AVE.)

CURVE NO.	Δ	D <sub>a</sub>	T	R	L	E	POT/PI STATION	POT/PI COORDINATES		PC STATION	PC COORDINATES		PT STATION	PT COORDINATES	
								NORTHING	EASTING		NORTHING	EASTING		NORTHING	EASTING
<b>PINE AVENUE</b>															
							1+50.00	9656.7689	9711.7595						
							1+83.69	9656.7510	9745.4454						
							5+78.94	9788.0796	10124.6959						
<b>EAST AVENUE</b>															
							20+00.00	9659.4390	9754.6023						
							23+37.10	9962.1310	9967.5698						

REVISIONS	
NAME	DATE

ILLINOIS DEPARTMENT OF TRANSPORTATION  
FAU ROUTES 1472 & 3569  
VILLAGE OF RIVERSIDE  
RAILWAY/WATER TOWER CAMPUS RESTORATION PROJECT


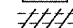
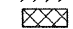


**ALIGNMENT AND BENCH MARKS**

SCALE: 1"=20'  
DATE: 12/01/08

DRAWN BY: SMP  
CHECKED BY: BDH

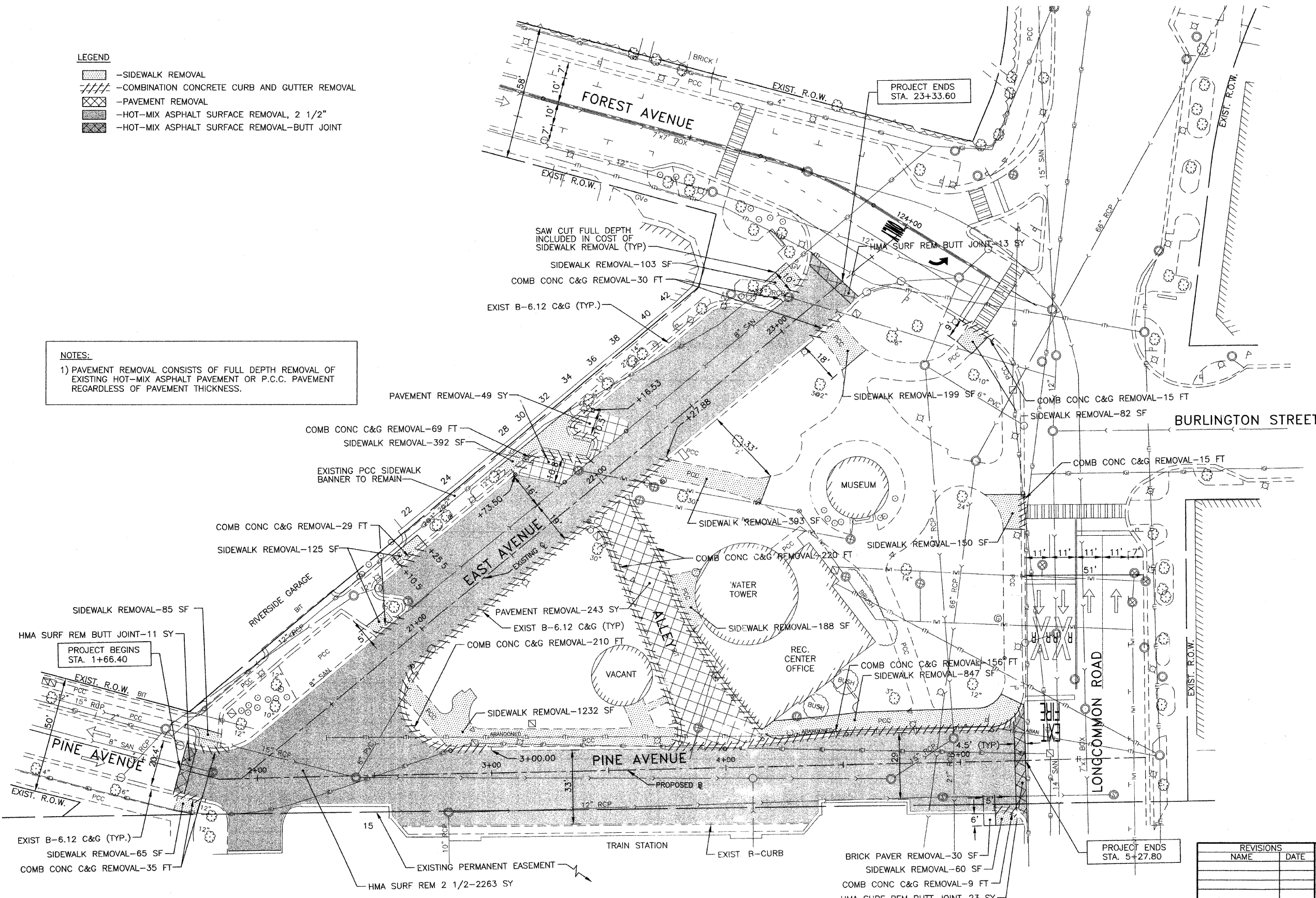
F.A.U. RTE.	SECTION	COUNTY	TOTAL SHEETS	SHEET NO.
14724 3569	06-00073-00-LS	COOK	24	8
STA.	TO STA.			
FED. ROAD DIST. NO.	ILLINOIS	FED. AID PROJECT		
CONTRACT NO. 63133				

**LEGEND**

-  -SIDEWALK REMOVAL
-  -COMBINATION CONCRETE CURB AND GUTTER REMOVAL
-  -PAVEMENT REMOVAL
-  -HOT-MIX ASPHALT SURFACE REMOVAL, 2 1/2"
-  -HOT-MIX ASPHALT SURFACE REMOVAL-BUTT JOINT

**NOTES:**

1) PAVEMENT REMOVAL CONSISTS OF FULL DEPTH REMOVAL OF EXISTING HOT-MIX ASPHALT PAVEMENT OR P.C.C. PAVEMENT REGARDLESS OF PAVEMENT THICKNESS.



REVISIONS	
NAME	DATE

ILLINOIS DEPARTMENT OF TRANSPORTATION  
 FAU ROUTES 1472 & 3569  
 VILLAGE OF RIVERSIDE  
 RAILWAY/WATER TOWER CAMPUS RESTORATION PROJECT

**SITE PREPARATION PLAN**

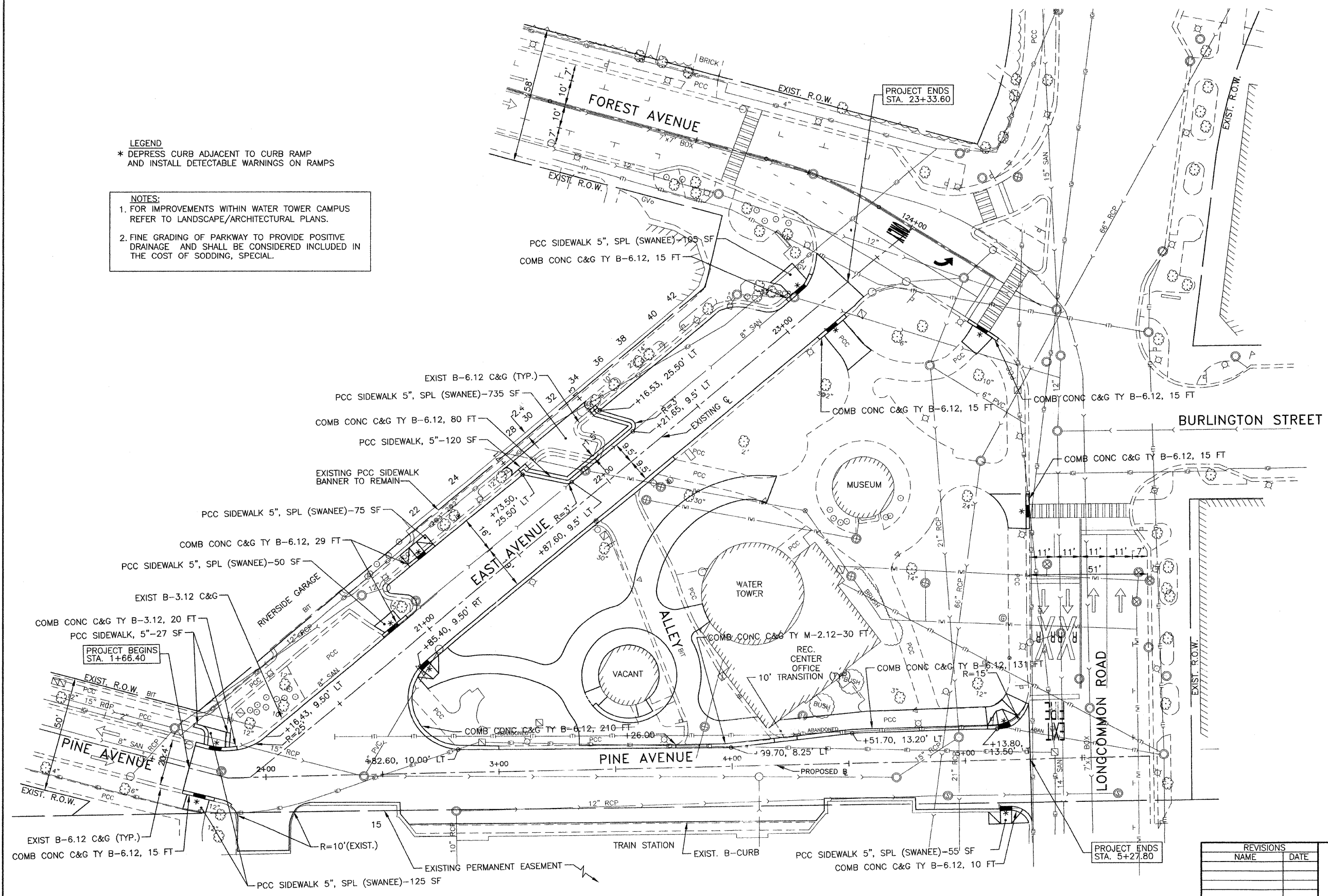
SCALE: 1"=20'  
 DATE: 12/01/08  
 DRAWN BY: SMP  
 CHECKED BY: BDH



FAU RTE. 1472 & 3569	SECTION 06-00073-00-LS	COUNTY COOK	TOTAL SHEETS 24	SHEET NO. 9
STA. 1+66.40		TO STA. 5+27.80		
FED. ROAD DIST. NO.		ILLINOIS	FED. AID PROJECT	
CONTRACT NO. 63133				

**LEGEND**  
 \* DEPRESS CURB ADJACENT TO CURB RAMP  
 AND INSTALL DETECTABLE WARNINGS ON RAMPS

**NOTES:**  
 1. FOR IMPROVEMENTS WITHIN WATER TOWER CAMPUS  
 REFER TO LANDSCAPE/ARCHITECTURAL PLANS.  
 2. FINE GRADING OF PARKWAY TO PROVIDE POSITIVE  
 DRAINAGE AND SHALL BE CONSIDERED INCLUDED IN  
 THE COST OF SODDING, SPECIAL.



HMA SC C N50 (2 1/2"), 350 TONS  
 LEV BIND MM N50 (3/4"), 105 TONS

REVISIONS	
NAME	DATE

ILLINOIS DEPARTMENT OF TRANSPORTATION  
 FAU ROUTES 1472 & 3569  
 VILLAGE OF RIVERSIDE  
 RAILWAY/WATER TOWER CAMPUS RESTORATION PROJECT

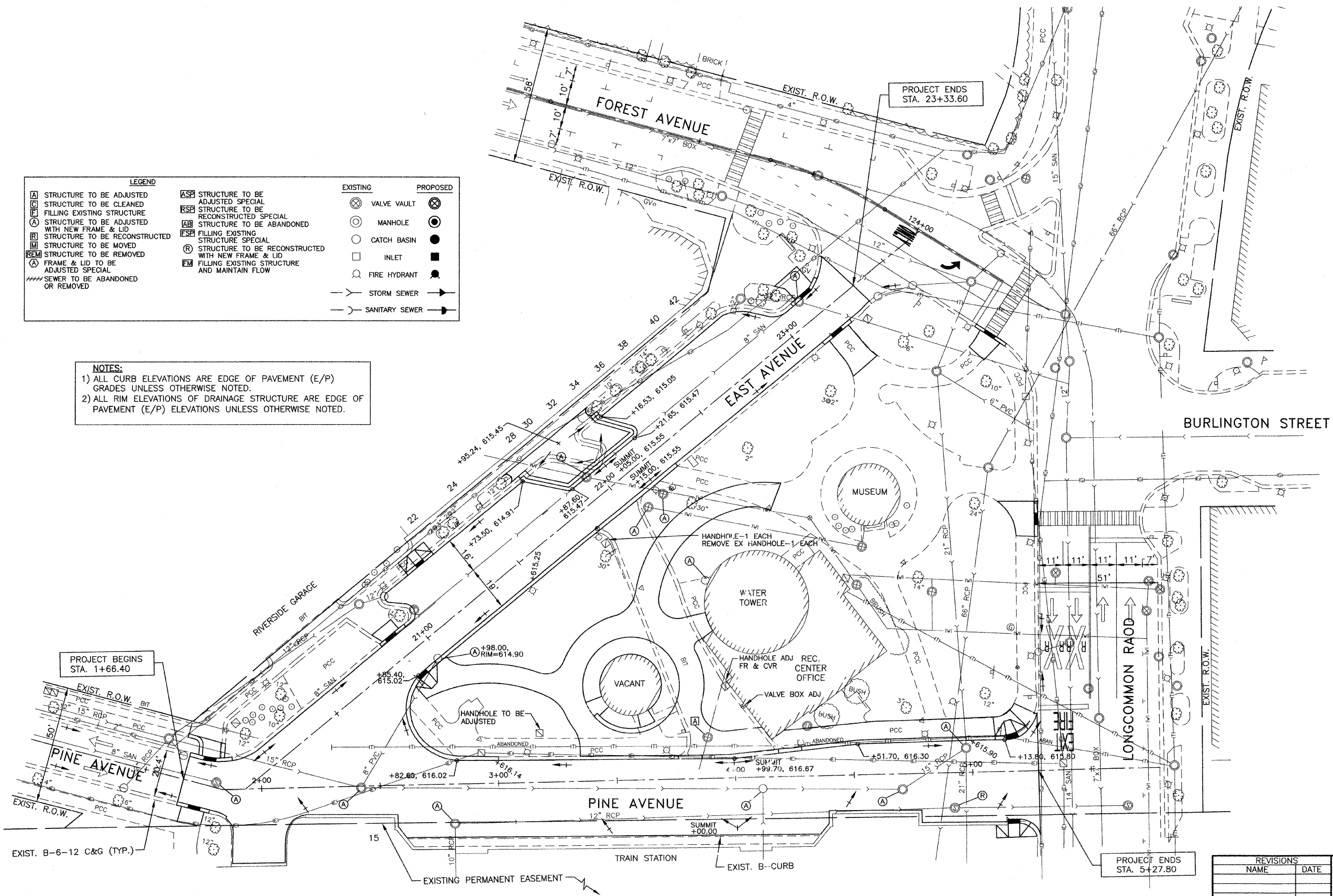
GEOMETRIC PLAN

SCALE: 1"=20'  
 DATE: 12/01/08  
 DRAWN BY: SMP  
 CHECKED BY: BDH

F.A.U. NO.	SECTION	COUNTY	TOTAL SHEETS	SHEET NO.
4724 3569	06-00073-00-LS	COOK	24	10
STA.	TO STA.			
FED. ROAD DIST. NO.	ILLINOIS	FED. AID PROJECT		
CONTRACT NO. 63133				

LEGEND		EXISTING	PROPOSED
[A]	STRUCTURE TO BE ADJUSTED	⊗	⊗
[C]	STRUCTURE TO BE CLEANED	○	○
[F]	FILLING EXISTING STRUCTURE	○	○
[A]	STRUCTURE TO BE ADJUSTED WITH NEW FRAME & LID	○	○
[R]	STRUCTURE TO BE RECONSTRUCTED	○	○
[M]	STRUCTURE TO BE MOVED	○	○
[EM]	STRUCTURE TO BE REMOVED	○	○
[A]	FRAME & LID TO BE ADJUSTED SPECIAL	○	○
////	SEWER TO BE ABANDONED OR REMOVED		
[AS]	STRUCTURE TO BE ADJUSTED SPECIAL	⊗	⊗
[RS]	STRUCTURE TO BE RECONSTRUCTED SPECIAL	⊗	⊗
[AB]	STRUCTURE TO BE ABANDONED	⊗	⊗
[FS]	FILLING EXISTING STRUCTURE SPECIAL	⊗	⊗
[R]	STRUCTURE TO BE RECONSTRUCTED WITH NEW FRAME & LID	⊗	⊗
[EM]	FILLING EXISTING STRUCTURE AND MAINTAIN FLOW	⊗	⊗
⊗	VALVE VAULT	⊗	⊗
○	MANHOLE	○	○
○	CATCH BASIN	○	○
□	INLET	□	□
○	FIRE HYDRANT	○	○
—	STORM SEWER	—	—
—	SANITARY SEWER	—	—

**NOTES:**  
 1) ALL CURB ELEVATIONS ARE EDGE OF PAVEMENT (E/P) GRADES UNLESS OTHERWISE NOTED.  
 2) ALL RIM ELEVATIONS OF DRAINAGE STRUCTURE ARE EDGE OF PAVEMENT (E/P) ELEVATIONS UNLESS OTHERWISE NOTED.



REVISIONS	
NAME	DATE

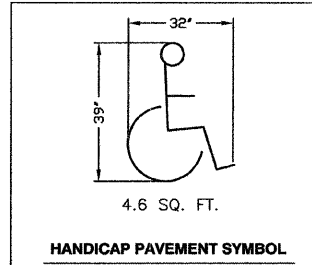
ILLINOIS DEPARTMENT OF TRANSPORTATION  
 FAU ROUTES 1472 & 3569  
 VILLAGE OF RIVERSIDE  
 RAILWAY/WATER TOWER CAMPUS RESTORATION PROJECT

**UTILITY AND GRADING PLAN**

SCALE: 1"=20'  
 DATE: 12/01/08

DRAWN BY: SMP  
 CHECKED BY: BDH

F.A.U. RTE.	SECTION	COUNTY	TOTAL SHEETS	SHEET NO.
14724 35691	06-00073-00-LS	COOK	24	11
STA.	TO STA.			
FED. ROAD DIST. NO.	ILLINOIS	FED. AID PROJECT		
CONTRACT NO. 63133				



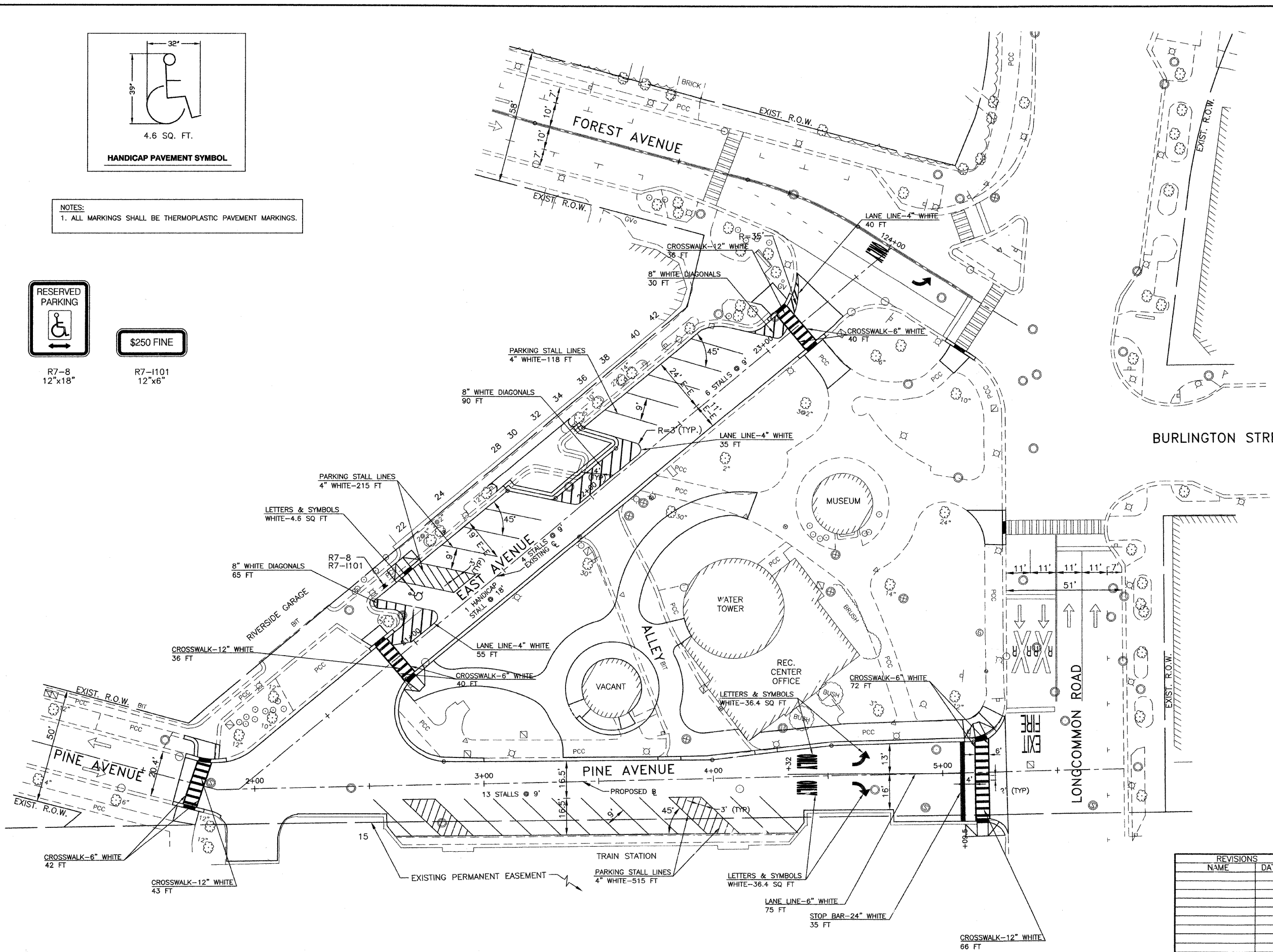
NOTES:  
1. ALL MARKINGS SHALL BE THERMOPLASTIC PAVEMENT MARKINGS.



R7-8  
12"x18"



R7-1101  
12"x6"



BURLINGTON STREET

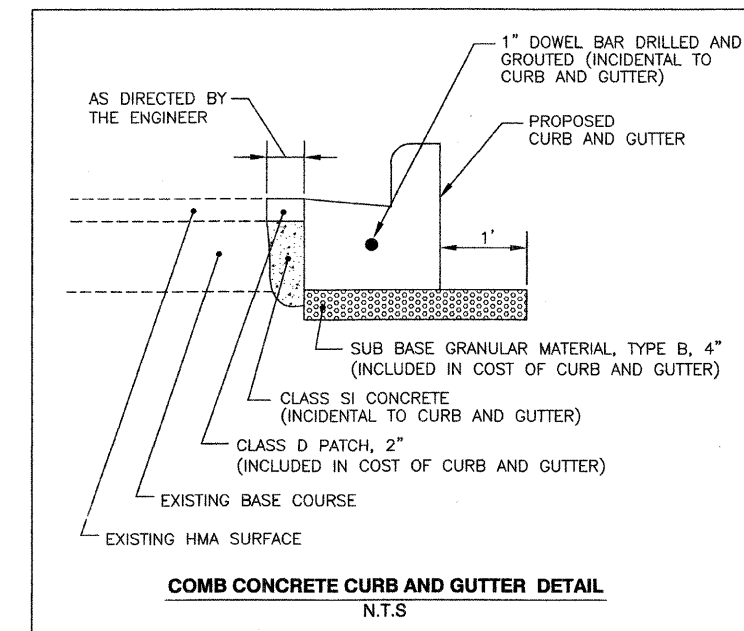
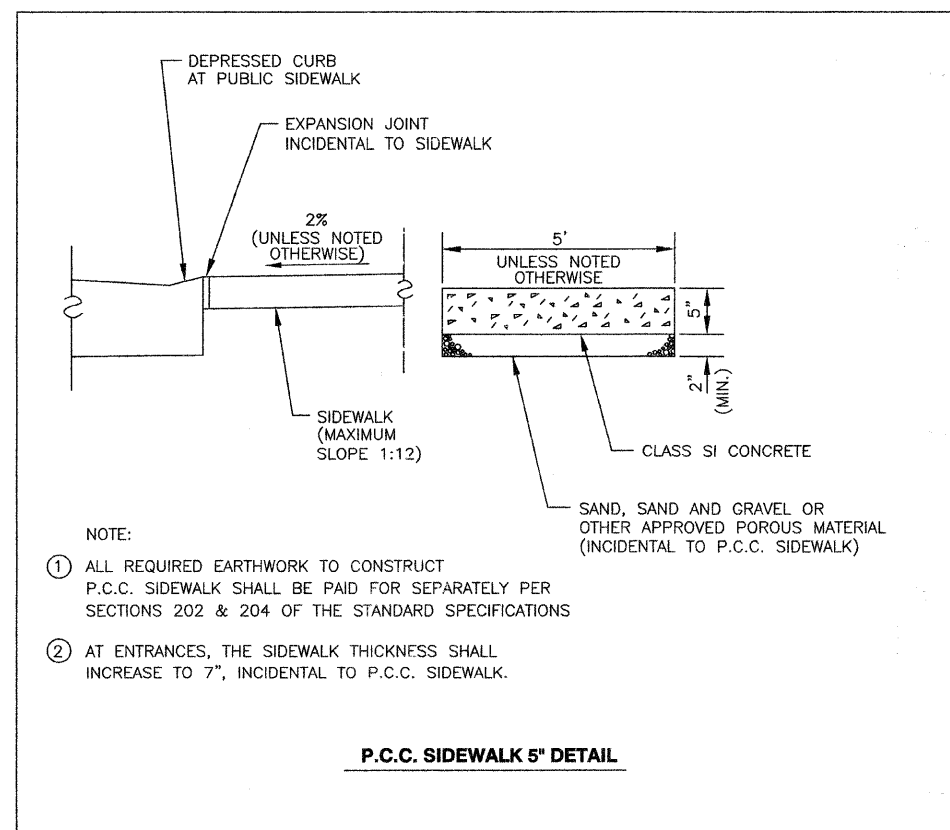
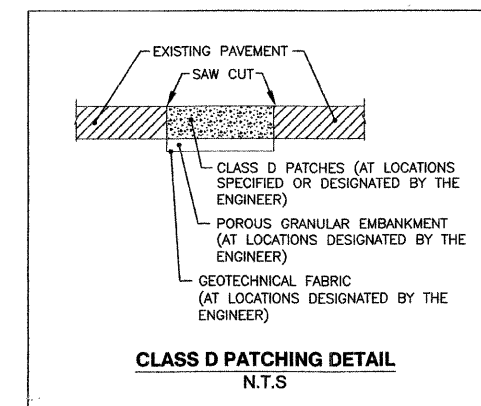
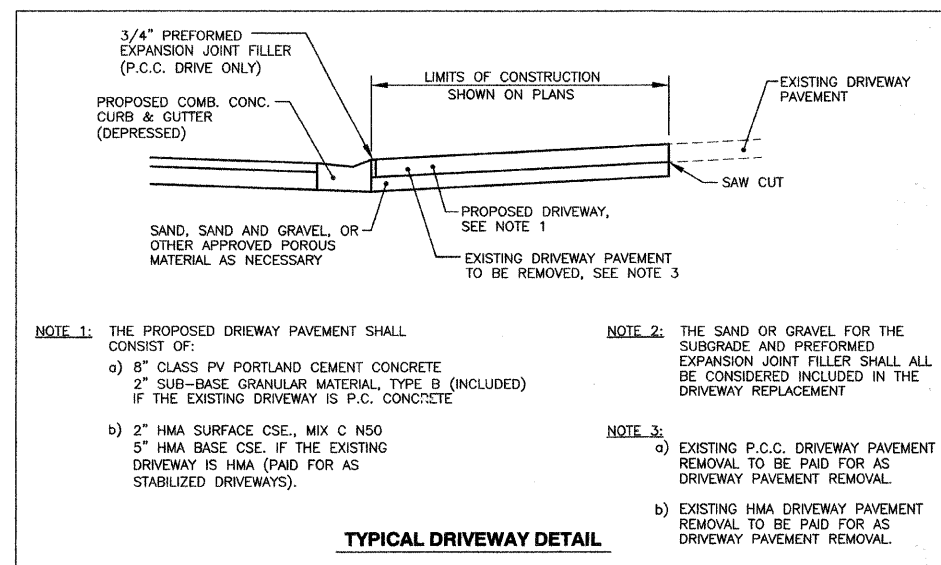
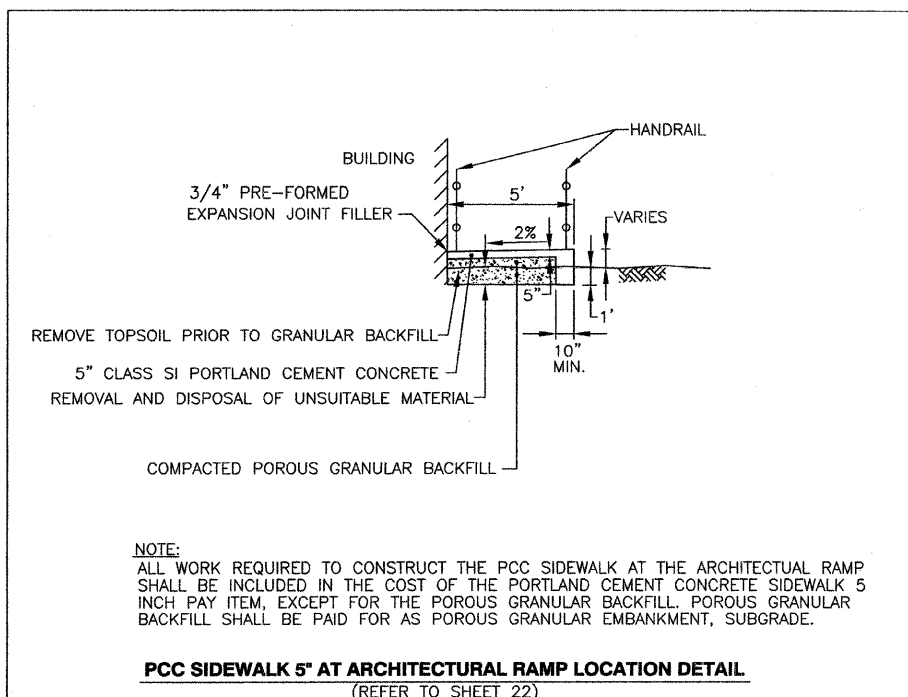
REVISIONS	
NAME	DATE

ILLINOIS DEPARTMENT OF TRANSPORTATION  
FAU ROUTES 1472 & 3569  
VILLAGE OF RIVERSIDE  
RAILWAY/WATER TOWER CAMPUS RESTORATION PROJECT

**PAVEMENT MARKING AND SIGNAGE PLAN**

SCALE: 1"=20'  
DATE: 12/01/08

DRAWN BY: SMP  
CHECKED BY: BDH



REVISIONS	
NAME	DATE

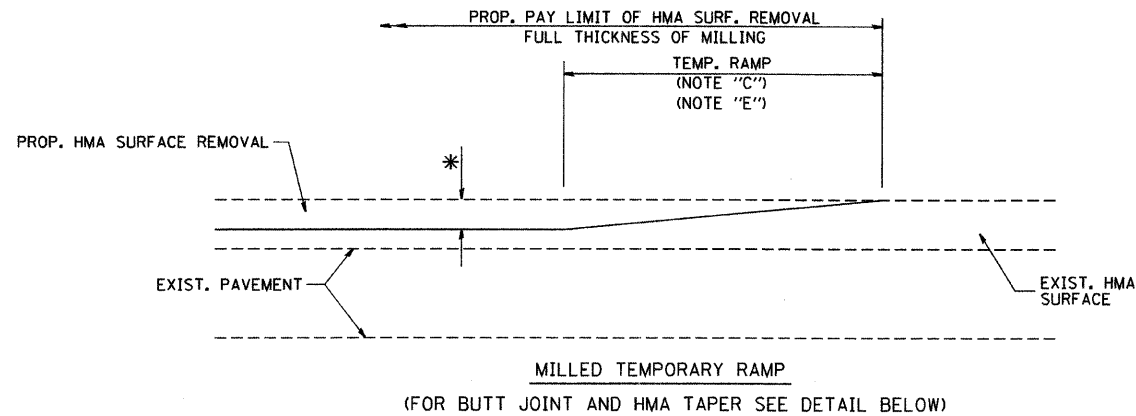
ILLINOIS DEPARTMENT OF TRANSPORTATION  
FAU ROUTES 1472 & 3569  
VILLAGE OF RIVERSIDE  
RAILWAY/WATER TOWER CAMPUS RESTORATION PROJECT

CONSTRUCTION DETAILS

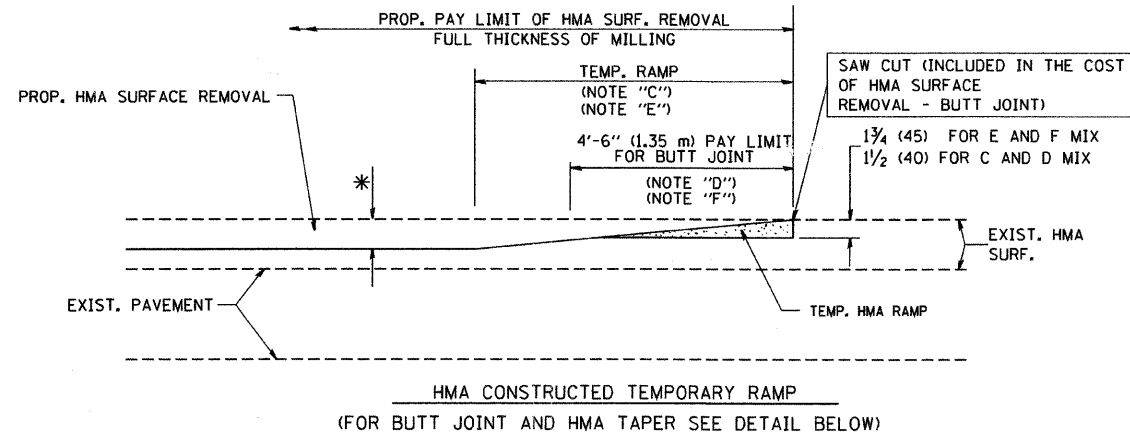
SCALE: NTS  
DATE: 12/01/08

DRAWN BY SMP  
CHECKED BY BDH

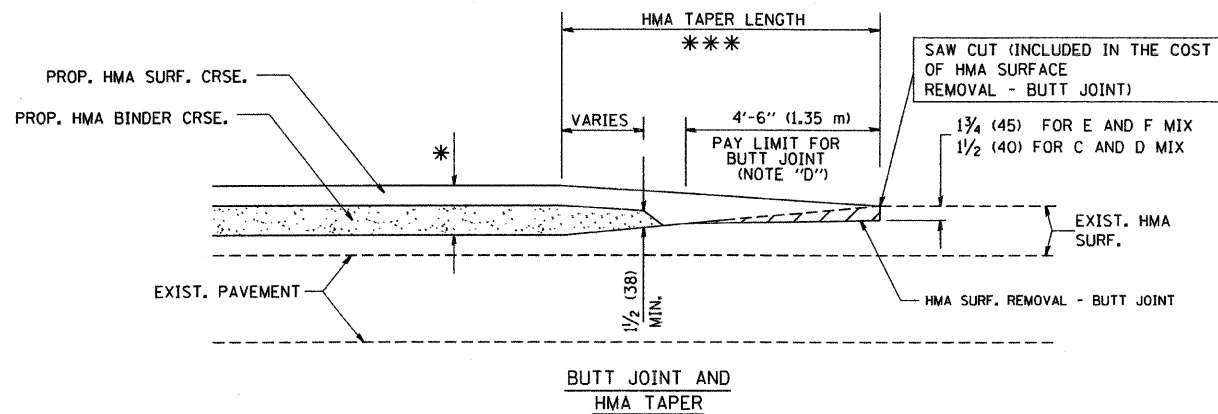
CONTRACT NO.				
F.A. RTE.	SECTION	COUNTY	TOTAL SHEETS	SHEET NO.
1472 & 3668	06-00073-00-LS	COOK	24	13
STA.		TO STA.		
FED. ROAD DIST. NO. 1		ILLINOIS	FED. AID PROJECT	
CONTRACT NO. 63133				



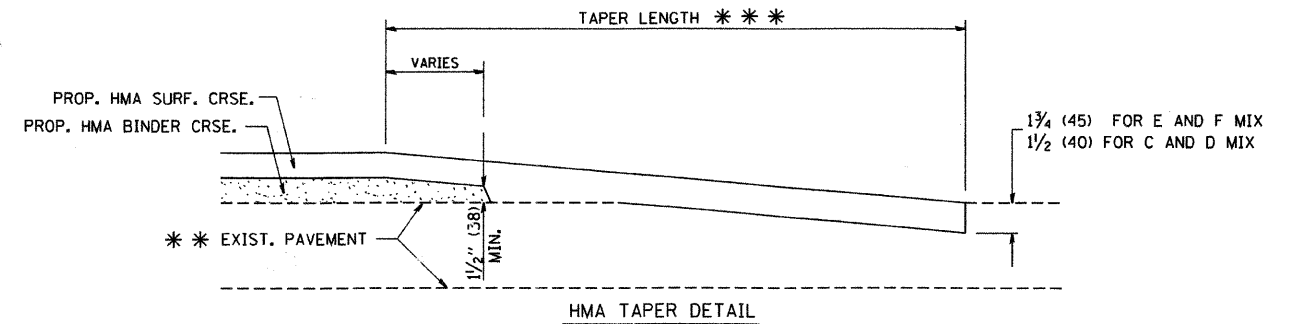
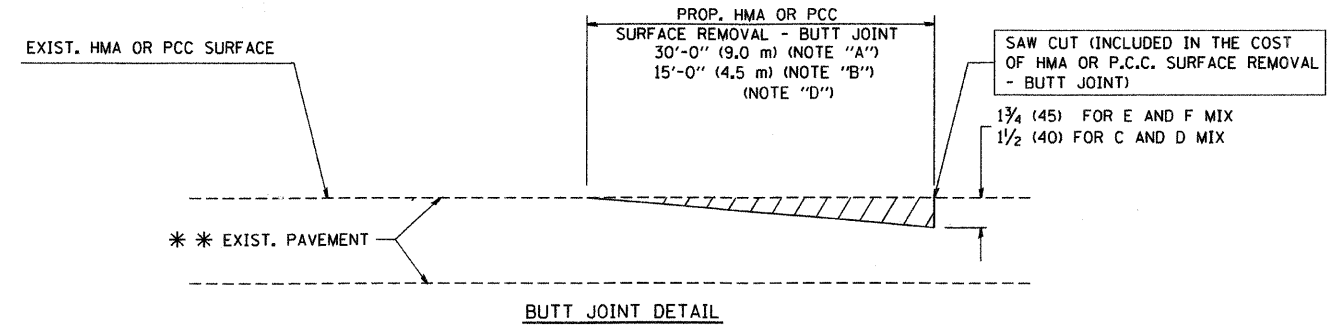
**OPTION 1**



**OPTION 2  
TYPICAL TEMPORARY RAMP**



**TYPICAL BUTT JOINT AND HMA TAPER  
FOR MILLING AND RESURFACING**



**TYPICAL BUTT JOINT AND HMA TAPER  
FOR RESURFACING ONLY**

\*\*\* PC CONCRETE, HMA OR HMA RESURFACED PAVEMENT.

**NOTES**

- A: MAINLINE ROADWAYS AND MAJOR SIDE ROADS.
  - B: MINOR SIDE ROADS.
  - C: THE TEMP. RAMP SHALL BE CONSTRUCTED IMMEDIATELY UPON REMOVAL OF THE EXISTING HMA SURFACE.
  - D: THE BUTT JOINT SHALL BE CONSTRUCTED IMMEDIATELY PRIOR TO PLACING THE PROPOSED HMA COURSES.
  - E: TAPER THE TEMP. RAMP AT A RATE OF 3'-0" (900 mm) PER 1 INCH (25 mm) OF MILLING THICKNESS.
  - F: INSTALLATION AND REMOVAL OF THE 4'-6" (1.35 m) TEMP. RAMP IS INCLUDED IN COST OF HMA SURFACE REMOVAL - BUTT JOINT
  - G: SEE ARTICLE 406.08 AND 406.14 OF THE STANDARD SPECIFICATIONS FOR "HMA AND/OR PCC SURFACE REMOVAL, BUTT JOINT".
- \* SEE TYPICAL SECTIONS FOR MILLING THICKNESS.
- \*\*\* 20'-0" (6.1 m) PER 1 (25) RESURFACING (NOTE "A")  
10'-0" (3.0 m) PER 1 (25) RESURFACING (NOTE "B")

ALL DIMENSIONS ARE IN INCHES (MILLIMETERS) UNLESS OTHERWISE SHOWN.

**BASIS OF PAYMENT:**

THE BUTT JOINT WILL BE PAID FOR AT THE CONTRACT UNIT PRICE PER SQUARE YARD (SQUARE METER) FOR "HOT-MIX ASPHALT SURFACE REMOVAL - BUTT JOINT" OR FOR "PORTLAND CEMENT CONCRETE SURFACE REMOVAL - BUTT JOINT".

REVISIONS	
NAME	DATE
M. DE YONG	6-13-90
M. DE YONG	7-3-90
M. DE YONG	3-27-92
R. SHAH	09/09/94
R. SHAH	10/25/94
A. ABBAS	03/21/97
M. GOMEZ	04/06/01
R. BORO	01/01/07

ILLINOIS DEPARTMENT OF TRANSPORTATION

**BUTT JOINT AND  
HMA TAPER  
DETAILS**

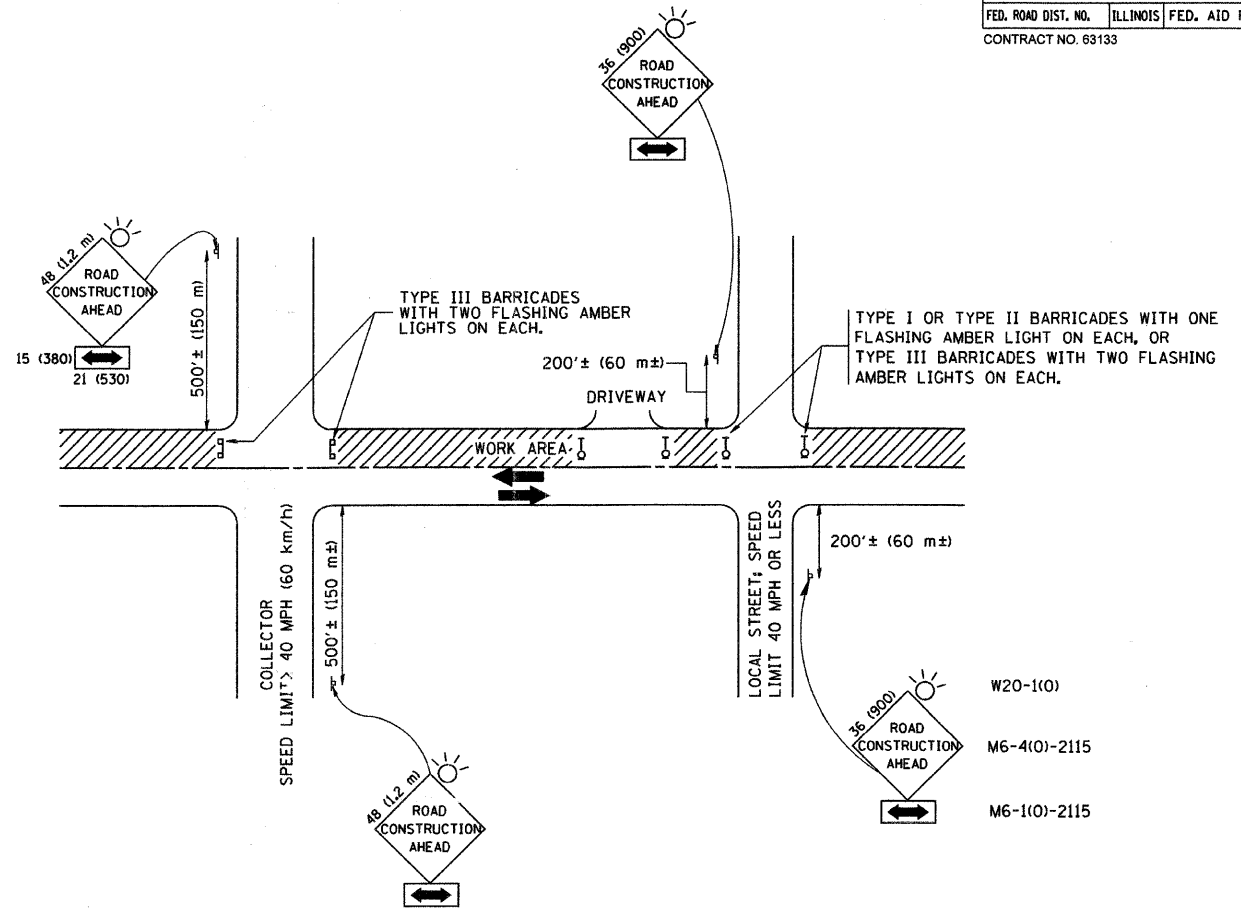
SCALE: VERT. NONE  
HORIZ. NONE

DRAWN BY

CHECKED BY

BD400-05 (VI-BD32)

CONTRACT NO.				
F.A. RTE.	SECTION	COUNTY	TOTAL SHEETS	SHEET NO.
1472 & 3569	06-00073-00-LS	COOK	24	14
STA.		TO STA.		
FED. ROAD DIST. NO.	ILLINOIS	FED. AID PROJECT		
CONTRACT NO. 63133				



TRAFFIC CONTROL AND PROTECTION FOR SIDE ROADS, INTERSECTIONS, AND DRIVEWAYS

NOTES:

- A. FOR NO LANE RESTRICTION ON THE SIDE ROAD OR DRIVEWAYS**
- SIDE ROAD WITH A SPEED LIMIT OF 40 MPH (60 km/h) OR LESS AS SHOWN ON THE DRAWING AND AS DIRECTED BY THE ENGINEER:
    - a) ONE ROAD CONSTRUCTION AHEAD SIGN 36 x 36 (900x900) WITH A FLASHER AND FLAG MOUNTED ON IT APPROXIMATELY 200' (60 m) IN ADVANCE OF THE MAIN ROUTE.
    - b) THE CLOSED PORTION OF THE MAIN ROUTE SHALL BE PROTECTED BY BLOCKING WITH TYPE I, TYPE II OR TYPE III BARRICADES, 1/3 OF THE CROSS SECTION OF THE CLOSED PORTION.
  - SIDE ROAD WITH A SPEED LIMIT GREATER THAN 40 MPH (60 km/h) AS SHOWN ON THE DRAWING AND AS DIRECTED BY THE ENGINEER:
    - a) ONE ROAD CONSTRUCTION AHEAD SIGN 48 x 48 (1.2 m x 1.2 m) WITH A FLASHER MOUNTED ON IT APPROXIMATELY 500' (150 m) IN ADVANCE OF THE MAIN ROUTE.
    - b) THE CLOSED PORTION OF THE MAIN ROUTE SHALL BE PROTECTED BY BLOCKING WITH TYPE III BARRICADES, 1/2 OF THE CROSS SECTION OF THE CLOSED PORTION.
  - WHEN THE SIDE ROAD LIES BETWEEN THE BEGINNING OF THE MAINLINE SIGNING AND THE WORK ZONE, A SINGLE HEADED ARROW (M6-1) SHALL BE USED IN LIEU OF THE DOUBLE HEADED ARROW (M6-4).
- B. FOR A LANE CLOSURE ON A SIDE ROAD OR DRIVEWAY:**
- USE APPLICABLE PORTIONS OF THE TYPICAL APPLICATION OF TRAFFIC CONTROL DEVICES (STD. 701501, STD. 701606 OR THE APPROPRIATE STANDARD). THE SPACING OF SIGNS AND BARRICADES SHALL BE ADJUSTED FOR FIELD CONDITIONS AS DIRECTED BY THE ENGINEER. THE DIRECTIONAL ARROW SHALL BE COVERED OR REMOVED WHEN NO LONGER CONSISTENT WITH THE SIDE ROAD LANE CLOSURE.
- C. ADVANCE WARNING SIGNS ARE TO BE OMITTED ON DRIVEWAY UNLESS OTHERWISE NOTED.**
- D. THE TRAFFIC CONTROL AND PROTECTION FOR SIDE ROADS, INTERSECTIONS, AND DRIVEWAYS SHALL BE INCIDENTAL TO THE COST OF SPECIFIED TRAFFIC CONTROL STANDARDS OR ITEMS.**

All dimensions are in millimeters (inches) unless otherwise shown.

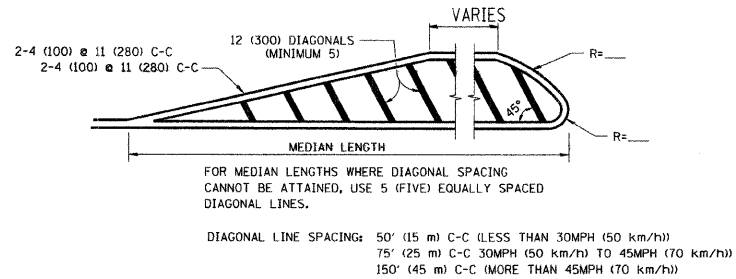
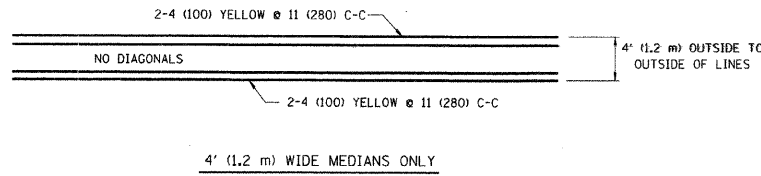
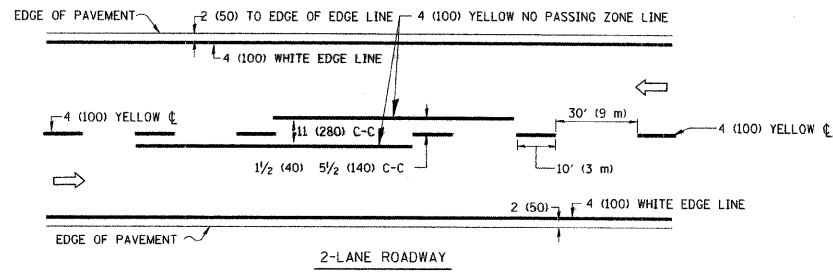
REVISIONS	
NAME	DATE
LHA	6/89
T. RAMMACHER	09/08/94
J. OBERLE	10/18/95
A. HOUSEH	03/06/96
A. HOUSEH	10/15/96
T. RAMMACHER	01/06/00

ILLINOIS DEPARTMENT OF TRANSPORTATION  
 TRAFFIC CONTROL AND PROTECTION  
 FOR  
 SIDE ROADS, INTERSECTIONS, AND  
 DRIVEWAYS

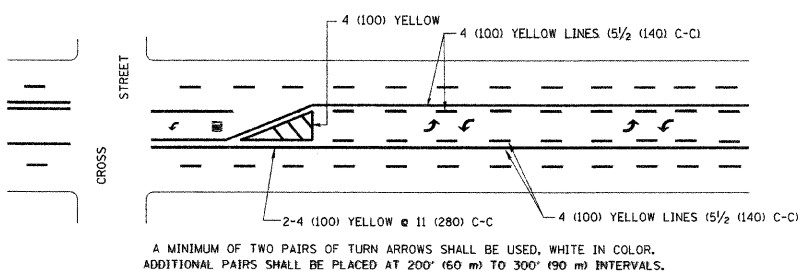
SCALE: NONE  
 DRAWN BY  
 CHECKED BY

PLOT DATE = 3/6/2007  
 FILE NAME = K:\data\td\1010.dgn  
 PLOT SCALE = 80.000 / 1 IN.  
 USER NAME = bward

F-AJ-RTE:	SECTION	COUNTY	TOTAL SHEETS	SHEET NO.
1472 & 3568	06-00073-00-LS	COOK	24	16
STA.		TO STA.		
FED. ROAD DIST. NO.		ILLINOIS FED. AID PROJECT		
CONTRACT NO. 83133				

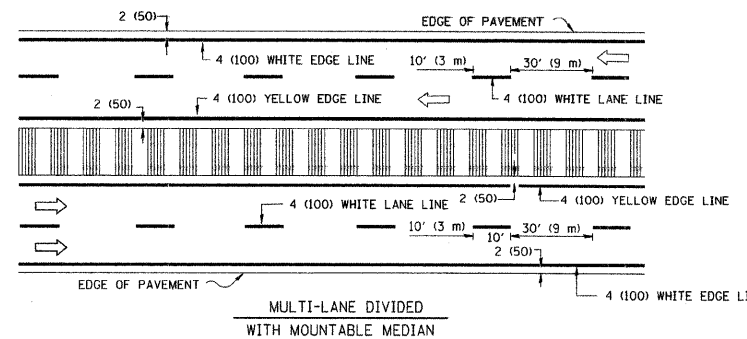
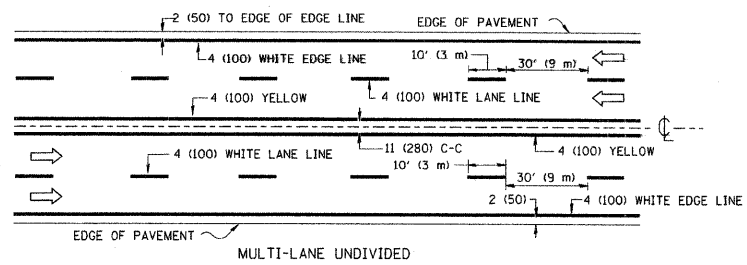


MEDIANS OVER 4' (1.2 m) WIDE



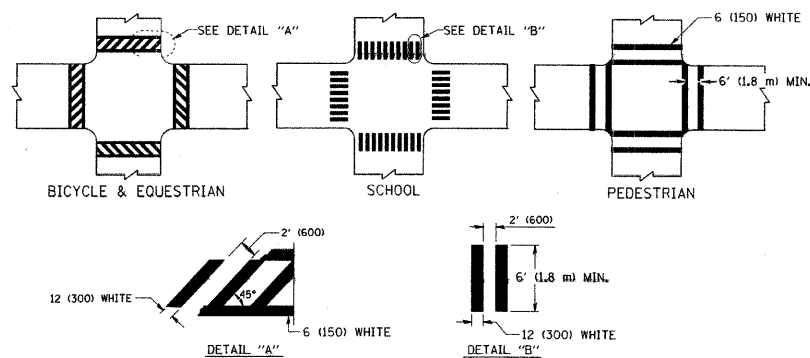
MEDIAN WITH TWO-WAY LEFT TURN LANE

TYPICAL PAINTED MEDIAN MARKING

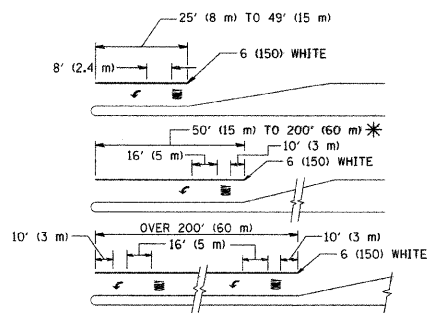


NOTE: MEDIANS WITH BARRIER CURB DO NOT REQUIRE AN EDGE LINE

TYPICAL LANE AND EDGE LINE MARKING



TYPICAL CROSSWALK MARKING

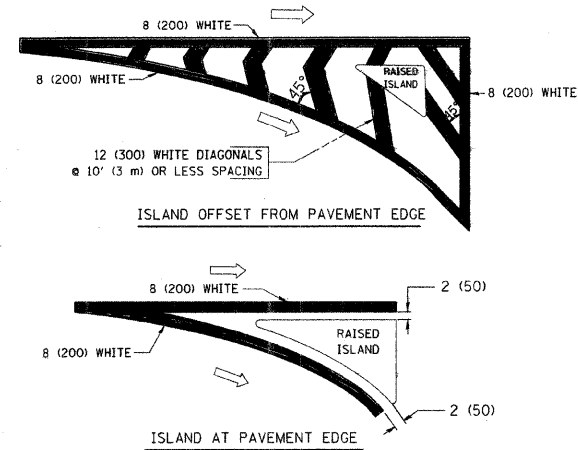


FULL SIZE LETTERS 8' (2.4 m) AND ARROWS SHALL BE USED.  
AREA = 15.6 SQ. FT. (1.5 m<sup>2</sup>) ONLY AREA = 20.8 SQ. FT. (1.9 m<sup>2</sup>)

\* TURN LANES IN EXCESS OF 400' (120 m) IN LENGTH MAY HAVE AN ADDITIONAL SET OF ARROW - "ONLY" INSTALLED MIDWAY BETWEEN THE OTHER TWO SETS OF ARROW - "ONLY".

TYPICAL LEFT (OR RIGHT) TURN LANE

TYPICAL TURN LANE MARKING



TYPICAL ISLAND MARKING

TYPE OF MARKING	WIDTH OF LINE	PATTERN	COLOR	SPACING / REMARKS
CENTERLINE ON 2 LANE PAVEMENT	4 (100)	SKIP-DASH	YELLOW	10' (3 m) LINE WITH 30' (9 m) SPACE
CENTERLINE ON MULTI-LANE UNDIVIDED PAVEMENT	2 @ 4 (100)	SOLID	YELLOW	11 (280) C-C
NO PASSING ZONE LINES FOR ONE DIRECTION FOR BOTH DIRECTIONS	4 (100) 2 @ 4 (100)	SOLID SOLID	YELLOW YELLOW	5/2 (140) C-C FROM SKIP-DASH CENTERLINE 11 (280) C-C OMIT SKIP-DASH CENTERLINE BETWEEN
LANE LINES	4 (100) 5 (125) ON FREEWAYS	SKIP-DASH SKIP-DASH	WHITE WHITE	10' (3 m) LINE WITH 30' (9 m) SPACE
DOTTED LINES (EXTENSIONS OF CENTER, LANE OR TURN LANE MARKINGS)	SAME AS LINE BEING EXTENDED	SKIP-DASH	SAME AS LINE BEING EXTENDED	2' (600) LINE WITH 6' (1.8 m) SPACE
EDGE LINES	4 (100)	SOLID	YELLOW-LEFT WHITE-RIGHT	OUTLINE MOUNTABLE MEDIANS IN YELLOW; EDGE LINES ARE NOT USED NEXT TO BARRIER CURB
TURN LANE MARKINGS	6 (150) LINE; FULL SIZE LETTERS & SYMBOLS (8' (2.4m))	SOLID	WHITE	SEE TYPICAL TURN LANE MARKING DETAIL
TWO WAY LEFT TURN MARKING	2 @ 4 (100) EACH DIRECTION 8' (2.4m) LEFT ARROW	SKIP-DASH AND SOLID IN PAIRS	YELLOW WHITE	10' (3 m) LINE WITH 30' (9 m) SPACE FOR SKIP-DASH; 5/2 (140) C-C BETWEEN SOLID LINE AND SKIP-DASH LINE SEE TYPICAL TWO-WAY LEFT TURN MARKING DETAIL
CROSSWALK LINES (PEDESTRIAN) A. DIAGONALS (BIKE & EQUESTRIAN) B. LONGITUDINAL BARS (SCHOOL)	2 @ 6 (150) 12 (300) @ 45° 12 (300) @ 90°	SOLID SOLID SOLID	WHITE WHITE WHITE	NOT LESS THAN 6' (1.8 m) APART 2' (600) APART SEE TYPICAL CROSSWALK MARKING DETAILS.
STOP LINES	24 (600)	SOLID	WHITE	PLACE 4' (1.2 m) IN ADVANCE OF AND PARALLEL TO CROSSWALK, IF PRESENT. OTHERWISE, PLACE AT DESIRED STOPPING POINT, PARALLEL TO CROSSROAD CENTERLINE, WHERE POSSIBLE
PAINTED MEDIANS	2 @ 4 (100) WITH 12 (300) DIAGONALS @ 45° NO DIAGONALS USED FOR 4' (1.2 m) WIDE MEDIANS	SOLID	YELLOW; TWO WAY TRAFFIC WHITE; ONE WAY TRAFFIC	11 (280) C-C FOR THE DOUBLE LINE SEE TYPICAL PAINTED MEDIAN MARKING.
GORE MARKING AND CHANNELIZING LINES	8 (200) WITH 12 (300) DIAGONALS @ 45°	SOLID	WHITE	DIAGONALS: 15' (4.5 m) C-C (LESS THAN 30MPH (50 km/h)) 20' (6 m) C-C (30MPH (50 km/h) TO 45MPH (70 km/h)) 30' (9 m) C-C (OVER 45MPH (70 km/h))
RAILROAD CROSSING	24 (600) TRANSVERSE LINES; "RR" 15 6' (1.8 m) LETTERS; 16 (400) LINE FOR "X"	SOLID	WHITE	SEE STATE STANDARD 780001 AREA OF: "R"=3.6 SQ. FT. (0.33 m <sup>2</sup> ) EACH "X"=54.0 SQ. FT. (5.0 m <sup>2</sup> )
SHOULDER DIAGONALS	12 (300) @ 45°	SOLID	WHITE - RIGHT YELLOW - LEFT	50' (15 m) C-C (LESS THAN 30MPH (50 km/h)) 75' (25 m) C-C (30 MPH (50 km/h) TO 45MPH (70 km/h)) 150' (45 m) C-C (OVER 45MPH (70 km/h))

FOR FURTHER DETAILS ON PAVEMENT MARKING REFER TO STANDARD SPECIFICATIONS FOR ROAD AND BRIDGE CONSTRUCTION AND STATE STANDARD 780001.

All dimensions are in inches (millimeters) unless otherwise shown.

REVISIONS	
NAME	DATE
EVERS	03-19-90
T. RAMMACHER	10-27-94
C. JUCIUS	09-09-09

ILLINOIS DEPARTMENT OF TRANSPORTATION

DISTRICT ONE  
TYPICAL PAVEMENT  
MARKINGS

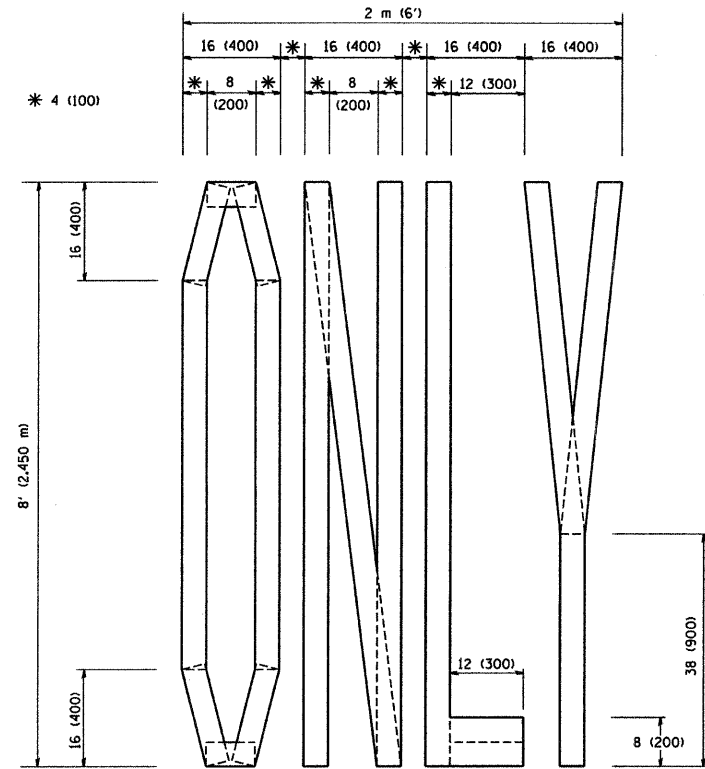
SCALE: NONE

DRAWN BY CADD

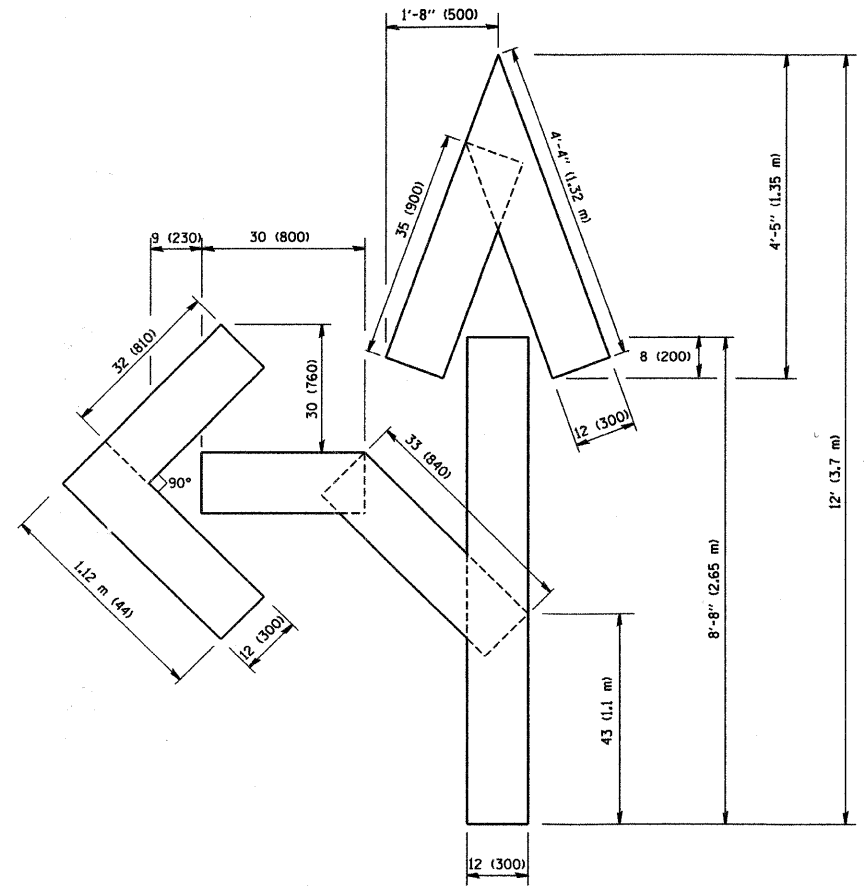
CHECKED BY

TC-13

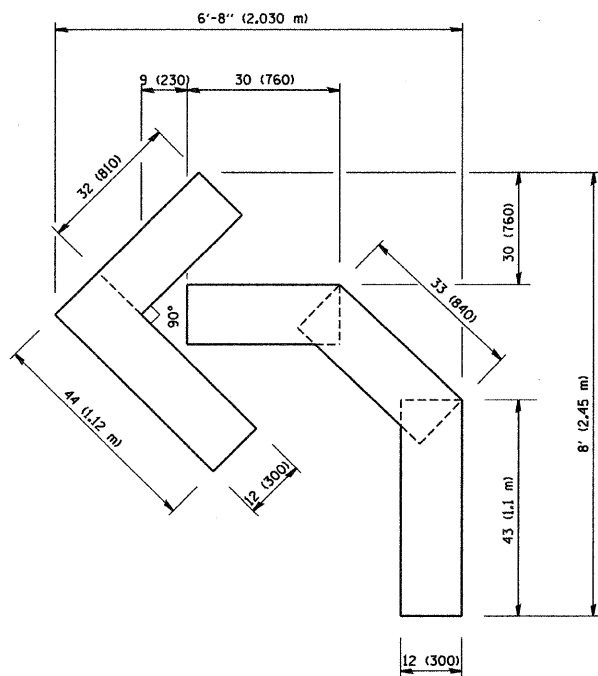
CONTRACT NO.				
F.A. RTE.	SECTION	COUNTY	TOTAL SHEETS	SHEET NO.
1472 & 3569	06-0073-00-LS	COOK	24	16
STA.		TO STA.		
FED. ROAD DIST. NO.		ILLINOIS FED. AID PROJECT		
CONTRACT NO. 63133				



QUANTITY  
 4 (100) LINE = 64.1 ft. (19.7 m)  
 21.1 sq. ft. (1.97 sq. m)



QUANTITY  
 4 (100) LINE = 82.5 ft. (25.3 m)  
 27.5 sq. ft. (2.53 sq. m)



QUANTITY  
 4 (100) LINE = 45.5 ft. (13.9 m)  
 15.2 sq. ft. (1.39 sq. m)

All dimensions are in inches (millimeters) unless otherwise shown.

REVISIONS	
NAME	DATE
T. RAMMACHER	09/18/94
J. OBERLE	06/01/96
T. RAMMACHER	06/05/96
T. RAMMACHER	11/04/97
T. RAMMACHER	03/02/98
E. GOMEZ	08/28/00

ILLINOIS DEPARTMENT OF TRANSPORTATION

PAVEMENT MARKING  
 LETTERS AND SYMBOLS  
 FOR TRAFFIC STAGING

SCALE: NONE

DRAWN BY CADD

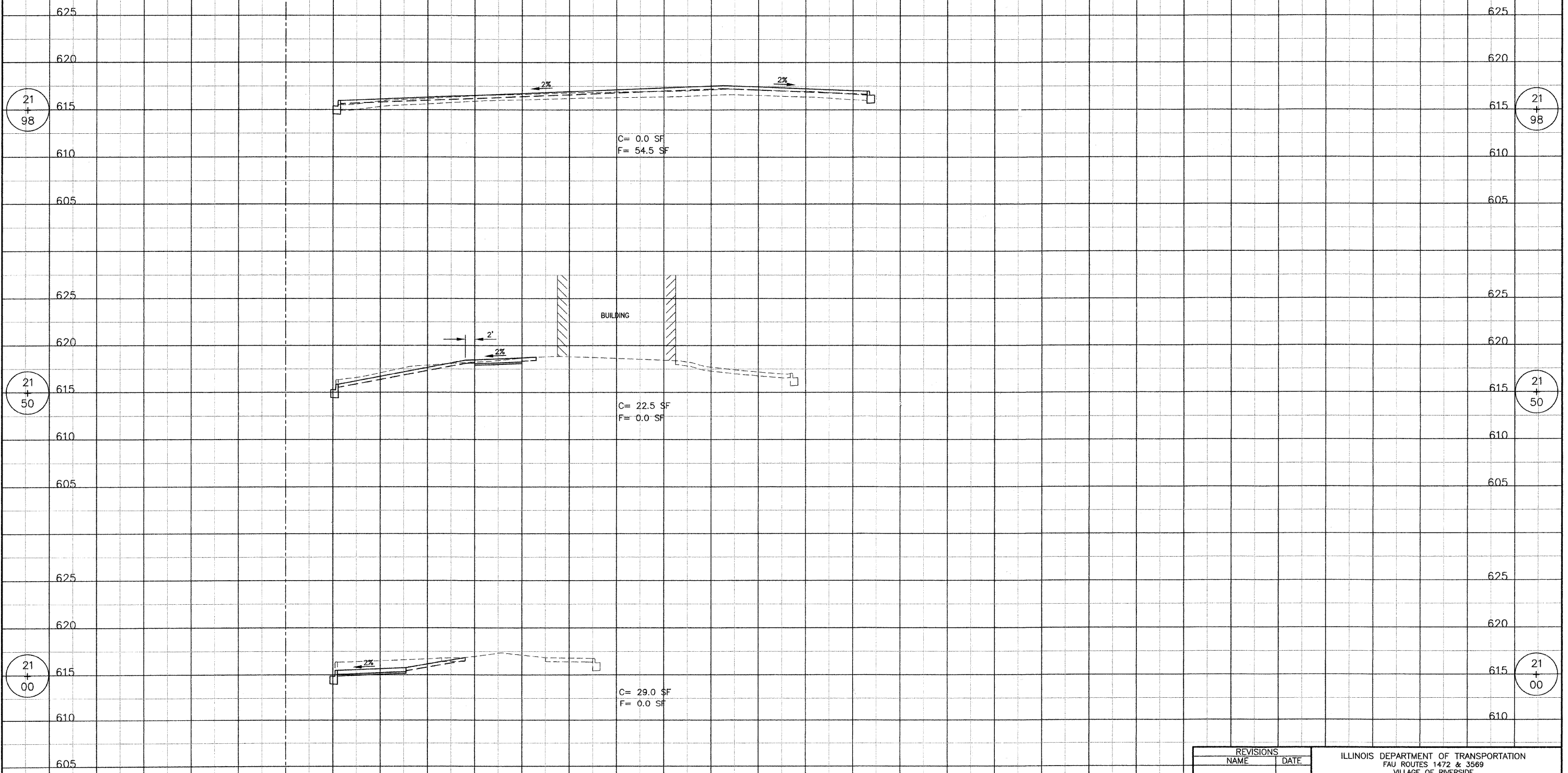
CHECKED BY

TC-16



50 40 30 20 10 0 EAST 10 20 30 40 50 60 70 80 90 100 110 120 130 140 150 160 170 180 190 200 210 220

F.A.U. RTE. 1472 & 3569	SECTION 06-00073-00-LS	COUNTY COOK	TOTAL SHEETS 24	SHEET NO. 17
STA. 21+00		TO STA. 21+98		
FED. ROAD DIST. NO.	ILLINOIS	FED. AID PROJECT		
CONTRACT NO. 63133				



C= 0.0 SF  
F= 54.5 SF

BUILDING

C= 22.5 SF  
F= 0.0 SF

C= 29.0 SF  
F= 0.0 SF

REVISIONS	
NAME	DATE

ILLINOIS DEPARTMENT OF TRANSPORTATION  
FAU ROUTES 1472 & 3569  
VILLAGE OF RIVERSIDE  
RAILWAY/WATER TOWER CAMPUS RESTORATION PROJECT

CONSTRUCTION DETAILS

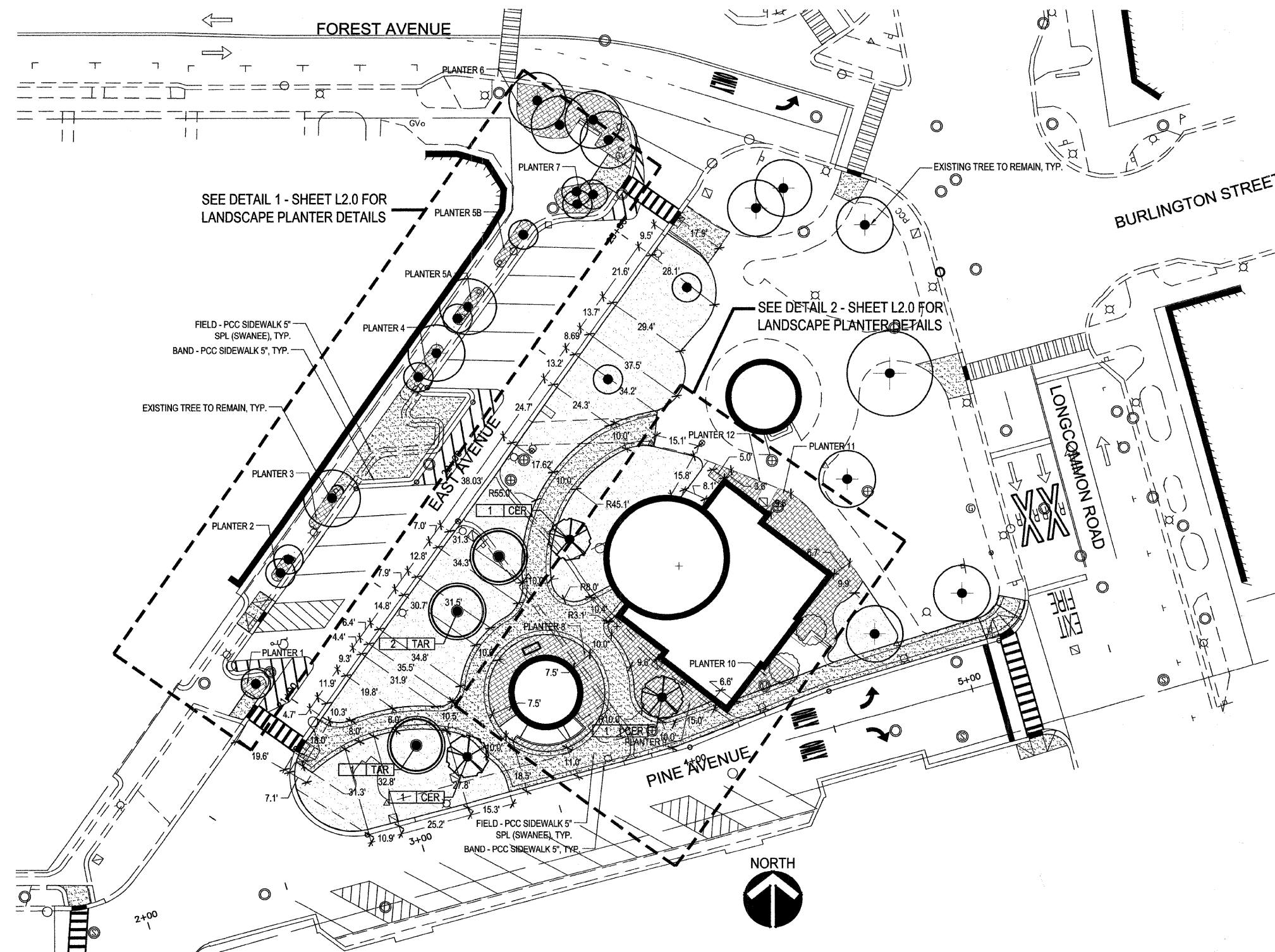
SCALE: NTS  
DATE: 12/01/08

DRAWN BY SMP  
CHECKED BY BDH

50 40 30 20 10 0 EAST 10 20 30 40 50 60 70 80 90 100 110 120 130 140 150 160 170 180

F.A.U. RTE.	SECTION	COUNTY	TOTAL SHEETS	SHEET NO.
1472 & 3569	06-00073-00-LS	COOK	24	18
STA.		TO STA.		
FED. ROAD DIST. NO.	ILLINOIS	FED. AID PROJECT		
CONTRACT NO. 63133				

L-1.0



**1 WATER TOWER CAMPUS SITE PLAN**  
SCALE: 1" = 20'-0"

*Diane Legge Kemp*  
 Diane Legge Kemp, Principal  
 DLK Civic Design  
 410 South Michigan Avenue  
 Chicago, Illinois 60605  
 ph: 312.322.0911  
 #157-008898  
 001-009224  
 exp. 8/31/09  
 LICENSED ARCHITECT  
 DIANE LEGGE  
 KEMP  
 STATE OF ILLINOIS

FOR SHEETS L-1.0 THROUGH L-3.0  
AND A-1.0 THROUGH A-2.0

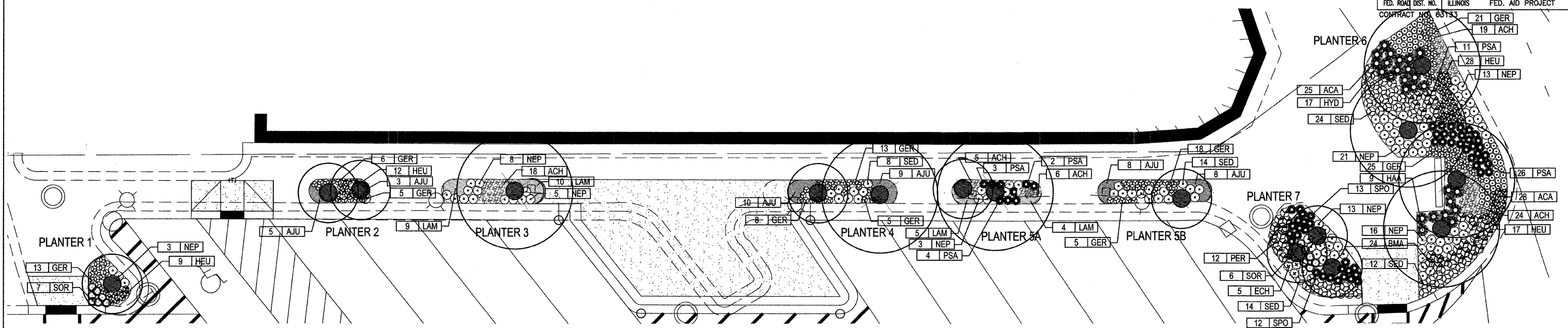
**DLK**  
Civic Design  
The Fine Arts Building  
410 South Michigan Avenue  
Chicago, Illinois 60605  
Tel. 312.322.0911  
Fax 312.322.5324  
www.dlkinc.com

REVISIONS	
NAME	DATE

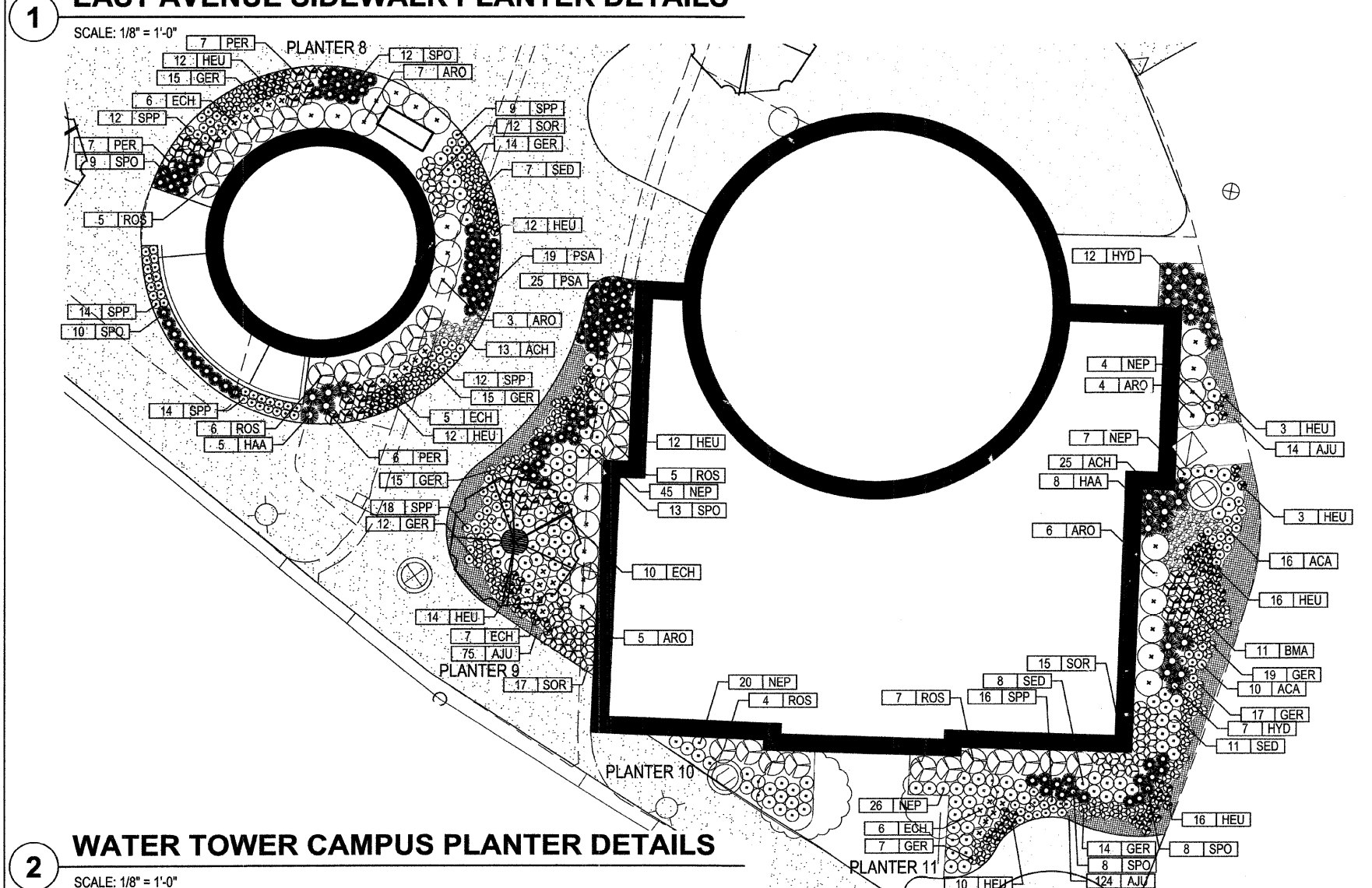
ILLINOIS DEPARTMENT OF TRANSPORTATION  
FAU ROUTES 1472 & 3569  
VILLAGE OF RIVERSIDE  
RAILWAY/WATER TOWER CAMPUS RESTORATION PROJECT  
  
LANDSCAPE SITE PLAN  
  
SCALE: 1"=20'-0"  
DATE: 03-27-2009  
  
DRAWN BY: SM  
CHECKED BY: JE

L-2.0

F.A.U. RTE.	SECTION	COUNTY	TOTAL SHEETS	SHEET NO.
4722 3569	06-00073-00-LS	COOK	24	19
STA.	TO STA.			
FED. ROAD DIST. NO.	ILLINOIS	FED. AID PROJECT		
CONTRACT NO. 85133	21 GER	19 ACH		



**1 EAST AVENUE SIDEWALK PLANTER DETAILS**



**2 WATER TOWER CAMPUS PLANTER DETAILS**

**MASTER SCHEDULE OF PLANTS**

Village of Riverside Railway / Water Tower Campus Restoration

Key	Botanical Name	Common Name	Size	Spacing	TOTALS
<b>SHADE TREES</b>					
TAR	Tilia americana 'Redmond'	American Linden	4" cal.	on plans	3
<b>ORNAMENTAL TREES</b>					
CER	Cercis canadensis	Eastern Redbud	8-foot ht.	on plans	3
<b>SHRUBS</b>					
ARO	Aronia melanocarpa 'Iroquois Beauty'	Black Chokeberry	24" B/B	Plant at 36" o.c.	25
ROS	Rosa Radcon	Pink Knockout Rose	24" B/B	Plant at 36" o.c.	27
<b>PERENNIALS AND ORNAMENTAL GRASSES</b>					
ACH	Astilbe chinensis 'Maggie Daley'	Chinese astilbe	1 Gal. pot	Plant at 12" o.c.	113
ACA	Asarum canadense	Wild Ginger	1 Gal. pot	Plant at 12" o.c.	79
AJU	Ajuga reptans 'Bronze Beauty'	Ajuga	1 Qt. pot	Plant at 12" o.c.	256
BMA	Brunnera macrophylla	False Forget-me-not	1 Qt. pot	Plant at 12" o.c.	32
ECH	Echinacea purpurea 'Magnus'	Purple Coneflower	1 Gal. pot	Plant at 18" o.c.	39
GER	Geranium 'Blokovo'	Wild Geranium	1 Qt. pot	Plant at 12" o.c.	246
HEU	Heuchera 'Palace Purple'	Coral Bells	1 Qt. pot	Plant at 12" o.c.	176
HAA	Hydrangea arborescens 'Annabelle'	Annabelle Hydrangea	1 Gal. pot	Plant at 24" o.c.	22
HYD	Hydrangea arborescens 'Oakleaf'	Oakleaf Hydrangea	1 Gal. pot	Plant at 24" o.c.	37
LAM	Lamium maculatum	Deadnettle	1 Qt. pot	Plant at 12" o.c.	28
NEP	Nepeta 'Walkers Low'	Catmint	1 Gal. pot	Plant at 18" o.c.	177
PER	Perovskia atriplicifolia 'Little Spire'	Russian Sage	1 Gal. pot	Plant at 18" o.c.	32
PSA	Pulmonaria saccharata	Lungwort	1 Gal. pot	Plant at 18" o.c.	90
SPP	Salvia pratensis 'Pink Delight'	Salvia	1 Qt. pot	Plant at 12" o.c.	93
SED	Sedum 'Autumn Joy'	Sedum	1 Gal. pot	Plant at 18" o.c.	100
SOR	Sorghastrum nutans 'Sloux Blue'	Indian Grass	1 Gal. pot	Plant at 18" o.c.	57
SPO	Sporobolus heterolepis	Prairie Dropseed	1 Gal. pot	Plant at 18" o.c.	85



**DLK**  
Civic Design  
The Fine Arts Building  
410 South Michigan Avenue  
Chicago, Illinois 60605  
Tel. 312.322.0911  
Fax 312.322.5324  
www.dlkinc.com

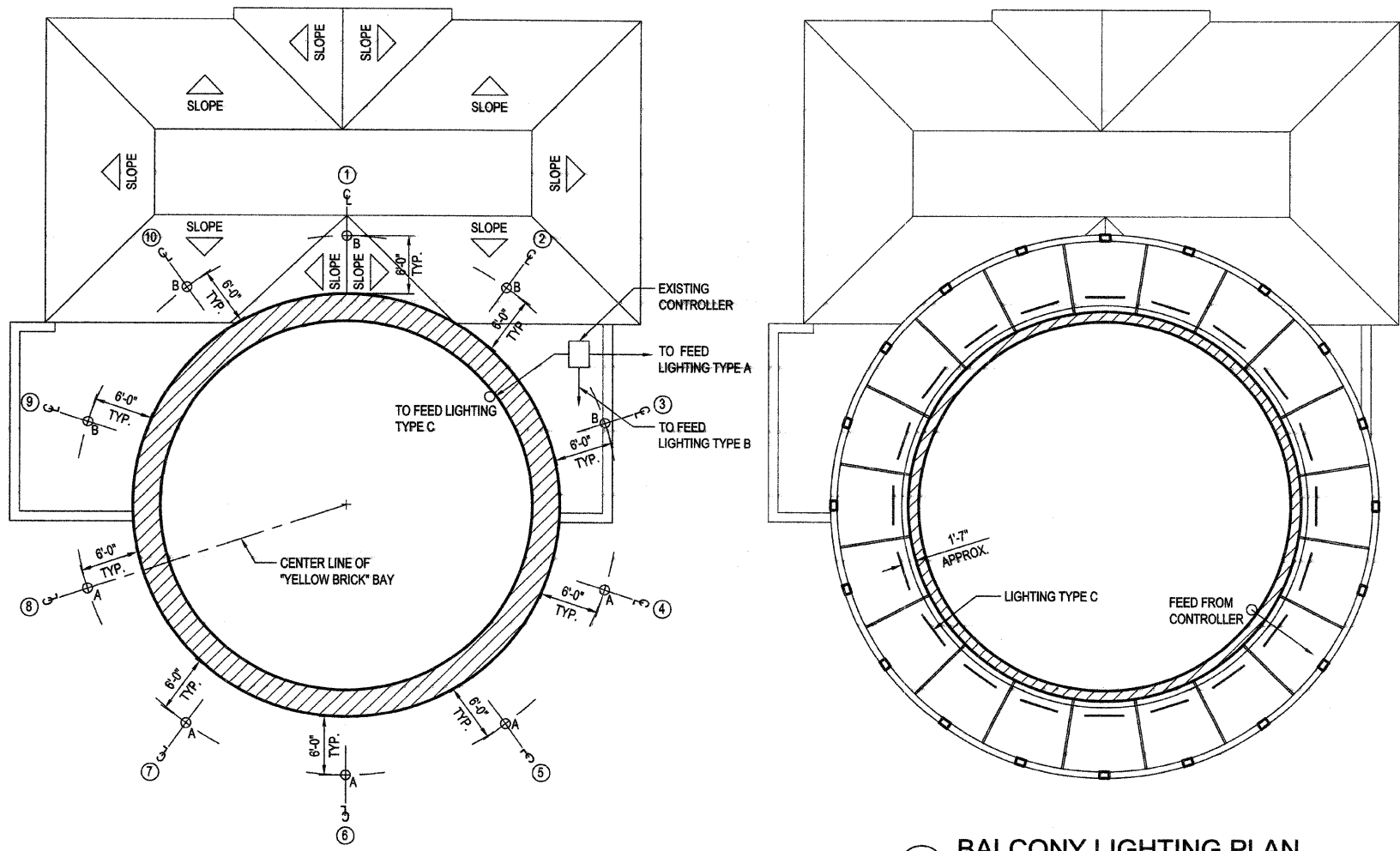
REVISIONS	
NAME	DATE

ILLINOIS DEPARTMENT OF TRANSPORTATION  
FAU ROUTES 1472 & 3569  
VILLAGE OF RIVERSIDE  
RAILWAY/WATER TOWER CAMPUS RESTORATION PROJECT  
**LANDSCAPE PLANTER DETAILS**  
SCALE: 1/8" = 1'-0"  
DATE: 03-27-2009  
DRAWN BY: SM  
CHECKED BY: JE



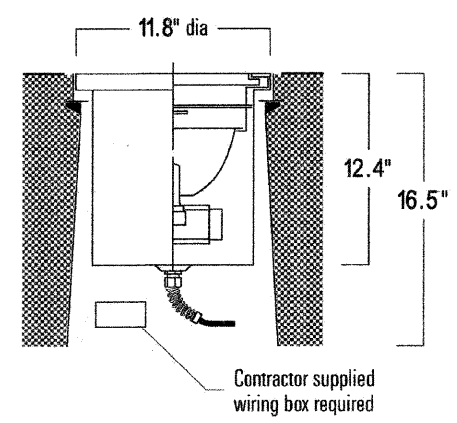
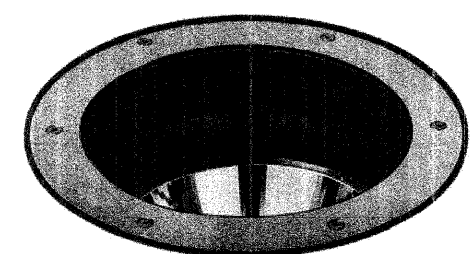
F.A.U. RTE.	SECTION	COUNTY	TOTAL SHEETS	SHEET NO.
1472 & 3569	06-00073-00-LS	COOK	24	21
STA.	TO STA.			
FED. ROAD DIST. NO.	ILLINOIS	FED. AID PROJECT		
CONTRACT NO. 63133				

A-1.0

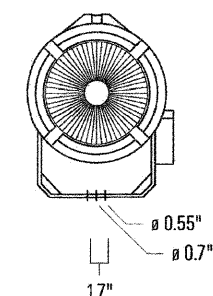
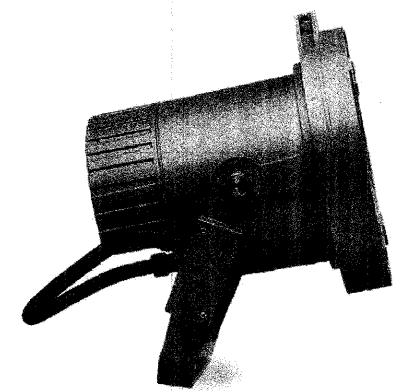


**A1** FIRST FLOOR LIGHTING PLAN  
SCALE: 1/8" = 1'-0"

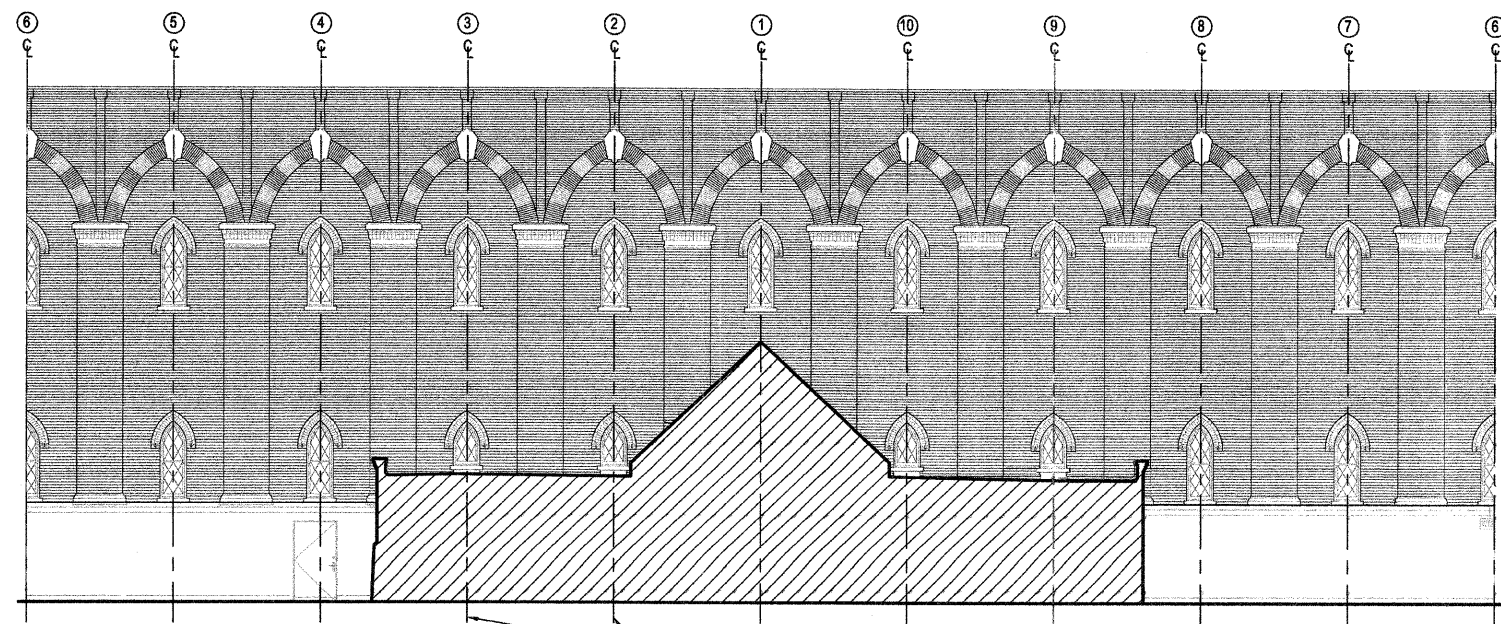
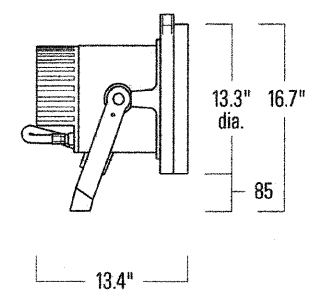
**A2** BALCONY LIGHTING PLAN  
SCALE: 1/4" = 1'-0"



**A** LIGHTING TYPE A + D  
SCALE: NTS



**B** LIGHTING TYPE B  
SCALE: NTS



**A3** ELEVATION  
SCALE: 1/8" = 1'-0"



**C** LIGHTING TYPE C  
SCALE: NTS

**GENERAL NOTES:**

- ALL LIGHTING FIXTURES TO BE INSTALLED BY MANUFACTURER'S SPECIAL PROVISIONS AND INSTALLATION INSTRUCTIONS
- IN-GROUND FIXTURES TO BE INSTALLED AND POSITIONED EXACTLY AS SHOWN ON THE PLAN (FOR LIGHTING ACCURACY & UNIFORMITY)
- ALL LIGHTING LOCATIONS SHALL BE CONFIRMED AND VERIFIED IN THE FIELD FOLLOWING THE SCHEDULED LIGHTING DESIGN MOCK-UP AND PRIOR TO FINAL ACCEPTANCE.
- FINAL LOCATION OF IN-GROUND LIGHT UNITS AT THE MUSEUM BUILDINGS (2 PER BUILDING) SHALL BE DETERMINED IN THE FIELD. WIRING AND CONNECTIONS SHALL BE REVIEWED AND APPROVED VIA THE SHOP DRAWING SUBMITTAL.
- CONTRACTOR SHALL VERIFY ALL LIGHTING MODEL AND ACCESSORIES NUMBERS PRIOR TO PURCHASING.

BILL OF MATERIALS			
LIGHT FIXTURE SCHEDULE			
LIGHT	QUANTITY	TYPE	PRODUCT
A	5	GROUND	WE-EF ARCHITECTURAL LIGHTING INGROUND UPLIGHT - ETC130 ASC [VN]
B	5	ROOF	WE-EF ARCHITECTURAL LIGHTING FLOODLIGHT/SYMETRIC - FLC250 F [VN]
C	20	48" LED	ILLUMIVISION HILGHILITE NEUTRAL HL-4-W41
D	4	GROUND	WE-EF ARCHITECTURAL LIGHTING INGROUND UPLIGHT - ETC130 ASC [A]

**DLK**  
Civic Design  
The Fine Arts Building  
410 South Michigan Avenue  
Chicago, Illinois 60605  
Tel. 312.322.0911  
Fax 312.322.5324  
www.dlkc.com

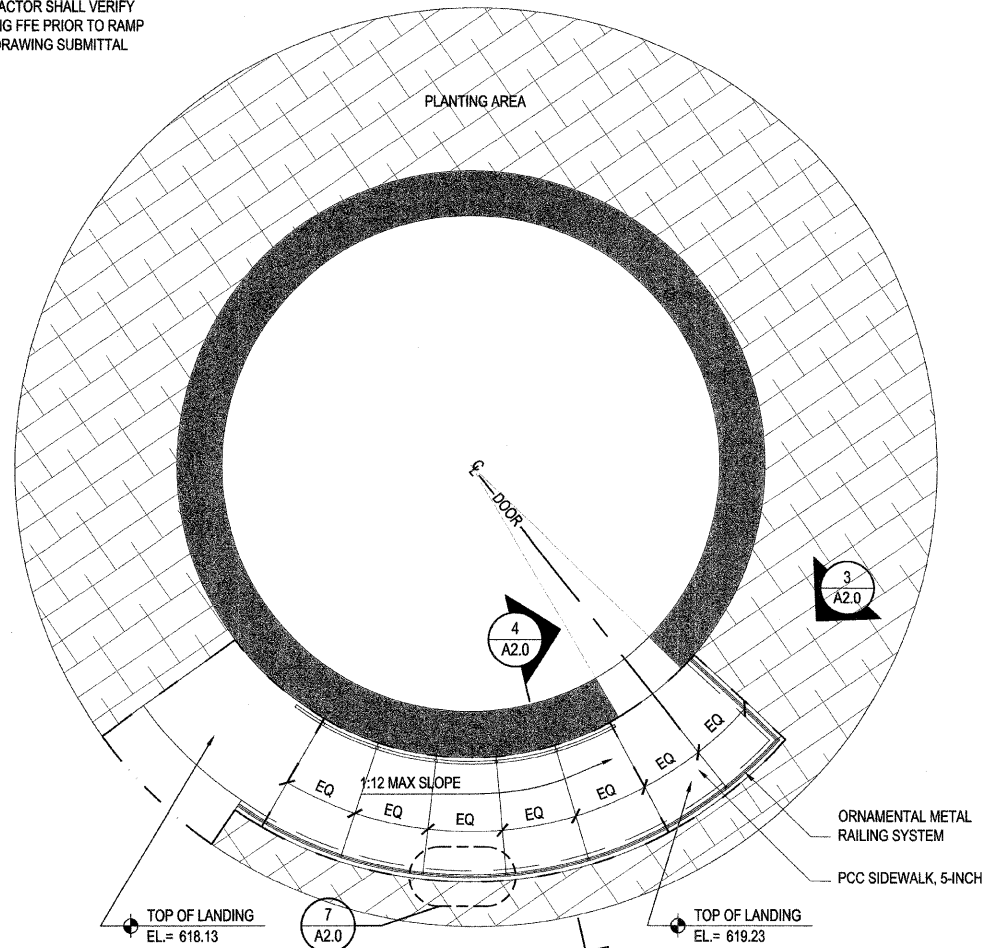
REVISIONS	
NAME	DATE

ILLINOIS DEPARTMENT OF TRANSPORTATION  
FAU ROUTES 1472 & 3569  
VILLAGE OF RIVERSIDE  
RAILWAY/WATER TOWER CAMPUS RESTORATION PROJECT  
ARCHITECTURAL LIGHTING LAYOUT  
SCALE: 1/8" = 1'-0"  
DATE: 12-05-2008  
DRAWN BY: EB  
CHECKED BY: AT

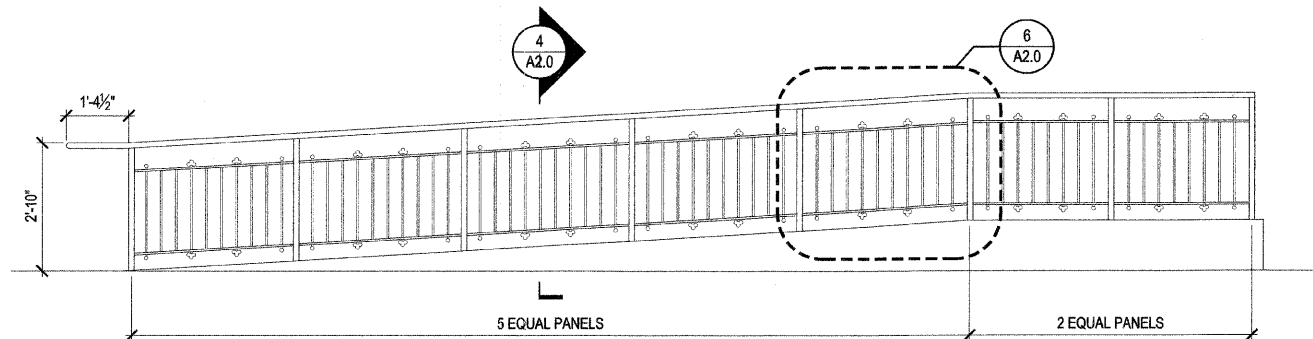
NOTE:  
CONTRACTOR SHALL VERIFY  
BUILDING FFE PRIOR TO RAMP  
SHOP DRAWING SUBMITTAL

FAU RTE. 4728 3569	SECTION 06-00073-00-LS	COUNTY COOK	TOTAL SHEETS 24	SHEET NO. 22
STA.		TO STA.		
FED. ROAD DIST. NO.	ILLINOIS	FED. AID PROJECT		
CONTRACT NO. 63133				

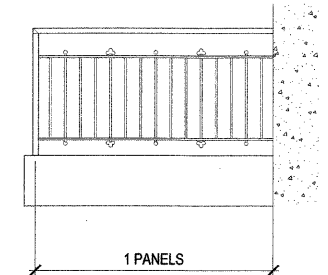
**A-2.0**



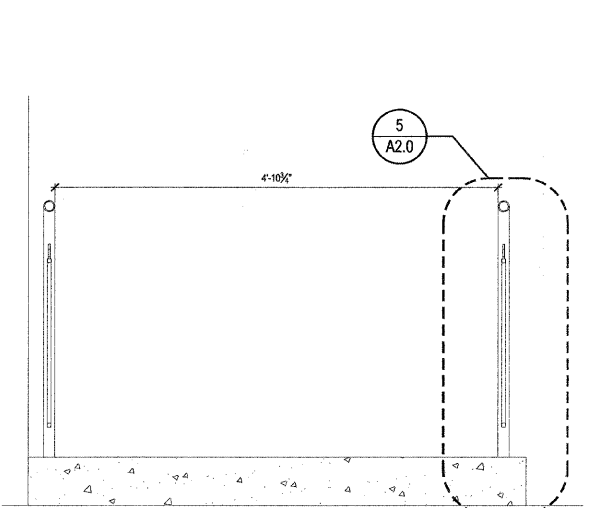
**1 RAMP PLAN**  
SCALE: 1/4" = 1'-0"



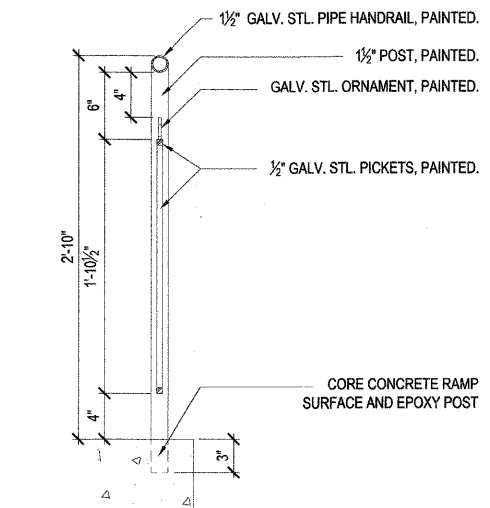
**2 DEVELOPED RAMP ELEVATION**  
SCALE: 1/2" = 1'-0"



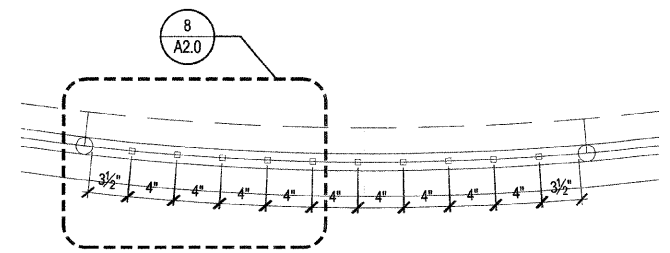
**3 DEVELOPED RAMP ELEVATION**  
SCALE: 1/2" = 1'-0"



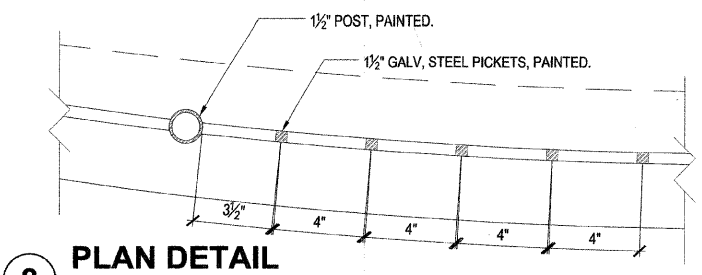
**4 RAMP SECTION**  
SCALE: 1" = 1'-0"



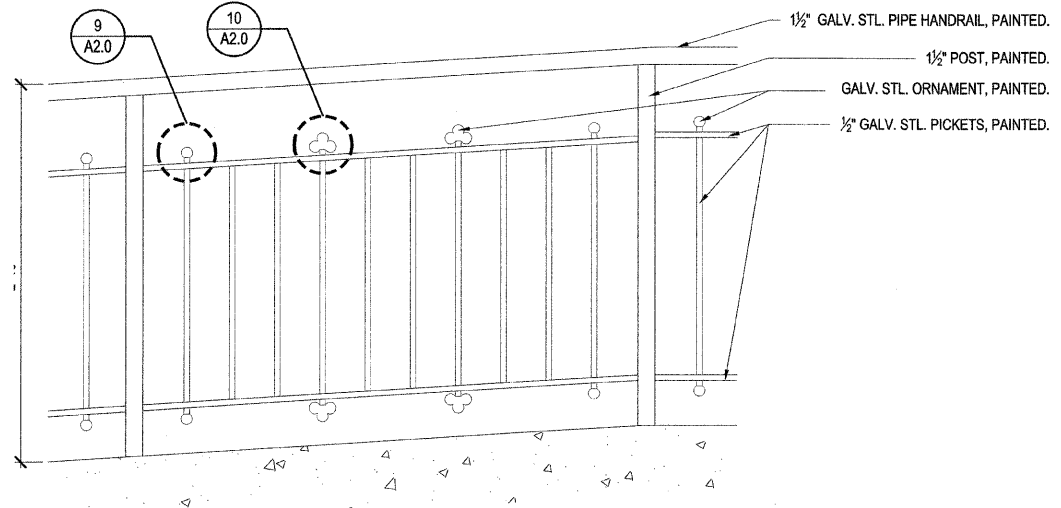
**5 RAMP DETAIL**  
SCALE: 1-1/2" = 1'-0"



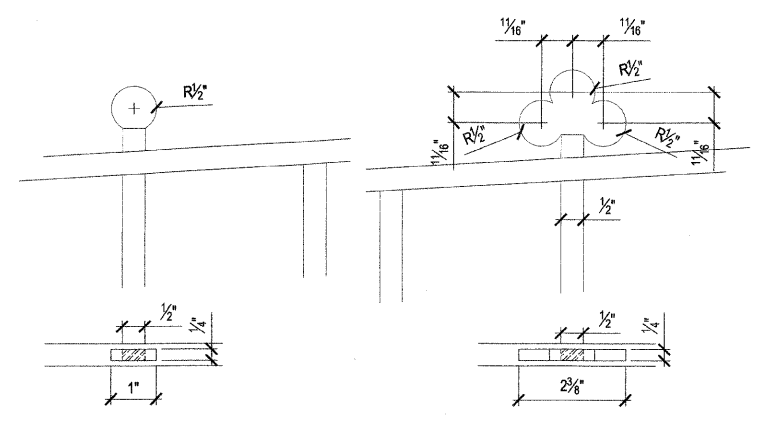
**7 ENLARGED PLAN**  
SCALE: 1-1/2" = 1'-0"



**8 PLAN DETAIL**  
SCALE: 3" = 1'-0"



**6 ENLARGED ELEVATION**  
SCALE: 1-1/2" = 1'-0"



**9 CIRCLE ORNAMENT**  
SCALE: 6" = 1'-0"

**10 CLOVER ORNAMENT**  
SCALE: 6" = 1'-0"

**DLK**  
Civic Design  
The Fine Arts Building  
410 South Michigan Avenue  
Chicago, Illinois 60605  
Tel. 312.322.0911  
Fax 312.322.5324  
www.dlkinc.com

REVISIONS	
NAME	DATE

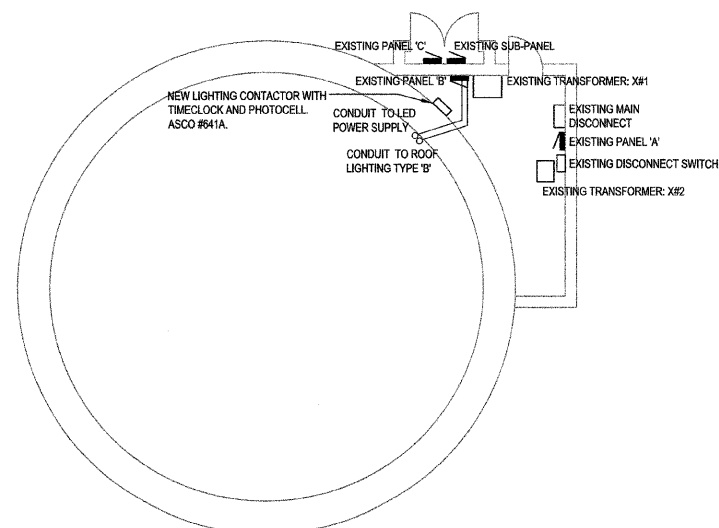
ILLINOIS DEPARTMENT OF TRANSPORTATION  
FAU ROUTES 1472 & 3569  
VILLAGE OF RIVERSIDE  
RAILWAY/WATER TOWER CAMPUS RESTORATION PROJECT

ARCHITECTURAL RAMP DRAWINGS

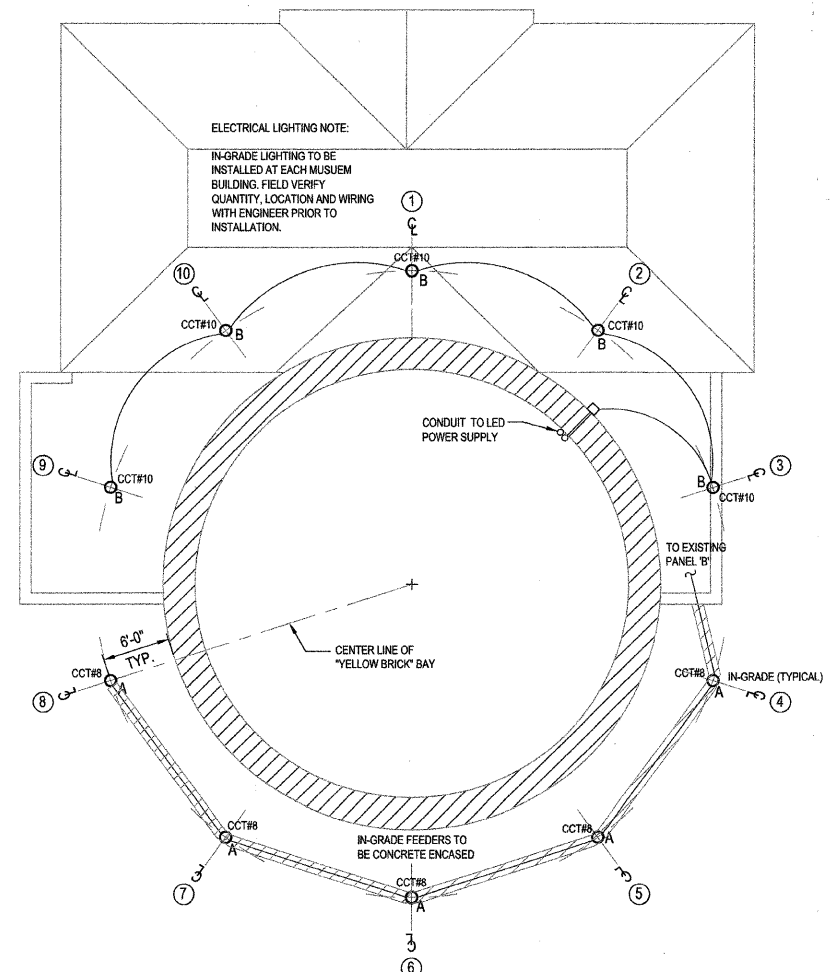
SCALE: VARIES  
DATE: 12-05-2008

DRAWN BY: EB  
CHECKED BY: JE

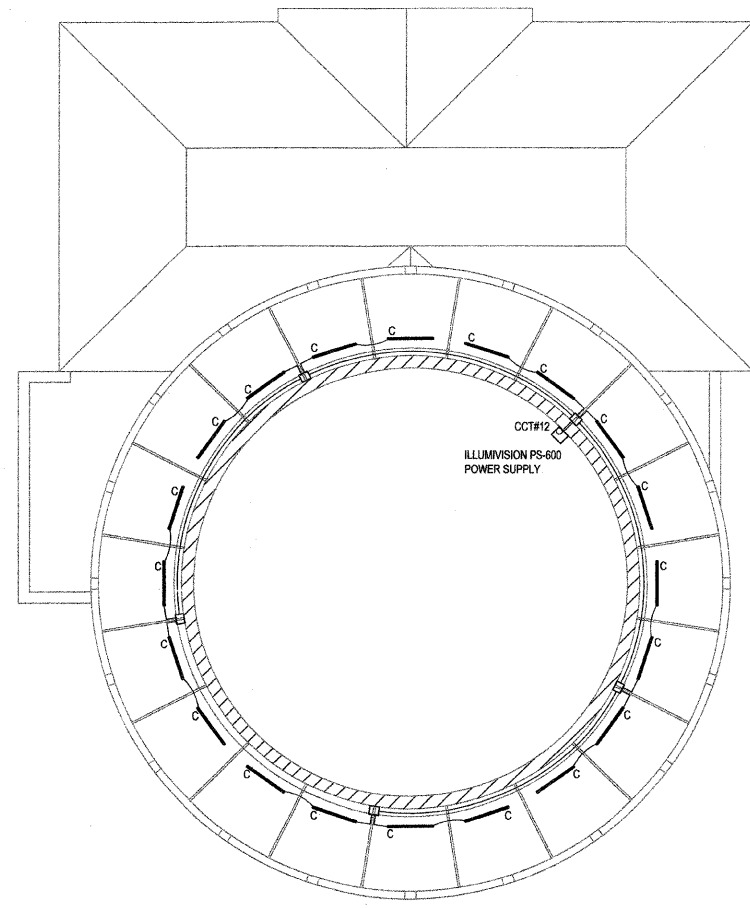
F.A.U. RTE.	SECTION	COUNTY	TOTAL SHEETS	SHEET NO.
1472 & 3569	06-00073-00-LS	COOK	24	23
STA.		TO STA.		
FED. ROAD DIST. NO.	ILLINOIS	FED. AID PROJECT		
CONTRACT NO. 63133				



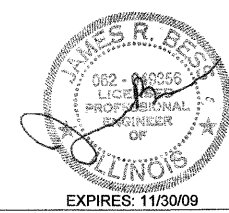
**E1** ELECTRICAL CLOSET PLAN  
 SCALE: 1/4" = 1'-0"



**E2** FIRST FLOOR LIGHTING PLAN  
 SCALE: 1/8" = 1'-0"



**E3** BALCONY LIGHTING PLAN  
 SCALE: 1/4" = 1'-0"



**BES** BUILDING ENGINEERING SYSTEMS, LLC  
 MECHANICAL, ELECTRICAL, PLUMBING AND FIRE PROTECTION ENGINEERING  
 444 N. WELLS STREET  
 SUITE 501  
 CHICAGO, IL 60654  
 T (312) 836-0595  
 F (312) 836-0596  
 www.besengr.com

REVISIONS	
NAME	DATE
ISSUE FOR PERMIT	02.06.09

ILLINOIS DEPARTMENT OF TRANSPORTATION  
 FAU ROUTES 1472 & 3569  
 VILLAGE OF RIVERSIDE  
 RAILWAY/WATER TOWER CAMPUS RESTORATION PROJECT  
**ELECTRICAL POWER AND LIGHTING PLANS**  
 SCALE: AS NOTED  
 DATE: FEBRUARY 6, 2009  
 DRAWN BY:  
 CHECKED BY:

## ELECTRICAL NOTES AND SPECIFICATIONS:

1. ALL WORK SHALL COMPLY WITH APPLICABLE LOCAL ELECTRICAL, BUILDING AND FIRE CODES, APPLICABLE FEDERAL AND STATE REGULATIONS.
2. LAYOUT IS DIAGRAMMATIC AND CONTRACTOR SHALL INSTALL EQUIPMENT TO MEET THE FIELD CONDITIONS.
3. CONTRACTOR SHALL OBTAIN AND PAY FOR ALL PERMITS AND INSPECTION FEES AS REQUIRED FOR HIS PORTION OF THE WORK.
4. CONTRACTOR SHALL GUARANTEE ALL WORK FOR A PERIOD OF ONE YEAR FROM DATE OF FINAL COMPLETION.
5. CONTRACTOR SHALL COORDINATE ALL WORK WITH THE RESPECTIVE TRADES AND VERIFY LOCATIONS FROM THE ARCHITECTURAL DRAWINGS, FIELD MEASUREMENTS AND SUPPLIER SHOP DRAWINGS.
6. CONTRACTOR SHALL VISIT SITE TO DETERMINE THE FULL EXTENT OF THE WORK AND FACILITY LOCATIONS AND VERIFY WITH THE LOCAL GOVERNING BODIES.
7. CONTRACTOR SHALL FURNISH SHOP DRAWING ON ALL EQUIPMENT AND FIXTURES TO ENGINEER FOR REVIEW; QUANTITY AS PER GENERAL PROVISIONS.
8. CONTRACTOR SHALL FURNISH ONE SET OF AS-BUILTS TO ENGINEER OF ALL CONTRACT WORK.
9. CONTRACTOR SHALL CHECK ALL DRAWINGS AND SPECIFICATIONS OF OTHER TRADES AND INCLUDE IN HIS BID ANY ADDITIONAL WORK REQUIRED BY THIS TRADE.
10. ALL EXISTING CONDITIONS MUST BE VERIFIED AT THE PROJECT SITE BY THE CONTRACTOR. THE CONTRACTOR IS REQUIRED TO MAKE ANY AND ALL PROVISIONS NECESSARY TO ADAPT THE NEW WORK TO EXISTING CONDITIONS. ALL SUCH ADAPTATION MUST BE REVIEWED BY THE ENGINEER AND MUST BE MADE AT NO ADDITIONAL COST TO THE OWNER.
11. THE CONTRACTOR SHALL AVOID ALL STRUCTURAL SUPPORT MEMBERS, RELOCATE EQUIPMENT AS NECESSITATED BY FIELD CONDITIONS, FROM WHERE SHOWN ON DRAWINGS. CUTTING SHALL ONLY BE DONE AFTER OBTAINING ARCHITECT'S REVIEW.
12. THE CONTRACTOR SHALL PROTECT THE EXISTING FACILITY AND SHALL EXERCISE CARE NOT TO DAMAGE ANY EXISTING CONSTRUCTION TO REMAIN. ALL WORK DAMAGED BY THE CONTRACTOR MUST BE RESTORED SO AS TO MATCH EXISTING ADJACENT SURFACES IN ALL RESPECTS AND AS APPROVED BY THE ARCHITECT. ANY SUCH CORRECTIVE WORK MUST BE PERFORMED AT NO ADDITIONAL COST. ALL CORING AND ELECTRICAL WORK DONE AT FLOOR OR FLOOR BELOW SHALL BE AFTER HOURS AND ON OVERTIME BASIS.
13. THE CONTRACTOR SHALL VERIFY THE CONDITION OF EXISTING ELECTRICAL PANELS AND NUMBER OF SPARES AND SPACES. HE SHALL PROVIDE AND INSTALL OVERCURRENT DEVICES AS REQUIRED TO CONTROL NEW CIRCUITRY.
14. THE CONTRACTOR SHALL MAINTAIN THE ELECTRICAL CONTINUITY OF ELECTRICAL CIRCUITS, EQUIPMENT, AND DEVICES TO REMAIN. HE SHALL REWORK AND RECIRCUIT AS NECESSARY TO INSURE THE PROPER FUNCTIONING OF REMAINING CIRCUITS, EQUIPMENT AND DEVICES.
15. CIRCUIT NUMBERS GIVEN ON DRAWINGS ARE FOR CIRCUIT IDENTIFICATION ONLY. THE CONTRACTOR SHALL INSTALL CIRCUITRY AS GOVERNED BY FIELD CONDITIONS. HE SHALL KEEP A TYPED RECORD CORRELATING GIVEN AND ACTUAL CIRCUIT NUMBERS AND RECORD THIS INFORMATION ON THE PANEL DIRECTORIES.
16. THE CONTRACTOR SHALL COORDINATE HIS WORK WITH THAT OF THE OTHER CONTRACTORS AND WITH THE EXISTING JOB SITE CONDITIONS. HE SHALL RELOCATE EQUIPMENT AS REQUIRED TO AVOID CONFLICT WITH OTHER TRADES. ALL DEVIATIONS SHALL BE APPROVED BY THE ENGINEER BEFORE EXECUTION OF WORK.
17. OUTAGES OF EXISTING ELECTRICAL SYSTEMS NECESSITATED BY THE NEW CONSTRUCTION WORK OF ALL TRADES SHALL BE IN ACCORDANCE WITH A SCHEDULE ISSUED IN THE FIELD BY THE LANDLORD & BLDG. ENGINEER. INCLUDE ALL ELECTRIC WORK, OVERTIME LABOR AND SUPERVISION NECESSARY TO ADHERE TO THIS SCHEDULE.
18. ANY EXISTING ELECTRICAL WORK WHICH IS PULLED OUT OR CUT AWAY SHALL BE REMOVED FROM THE SITE AS IF IT WERE RUBBISH. PROPER CREDIT SHALL BE GIVEN FOR ALL SALVAGEABLE ITEMS.
19. RACEWAYS SHALL BE MINIMUM 3/4" EMT FOR LIGHTING AND APPLIANCE BRANCH CIRCUITRY AND MINIMUM 3/4" EMT FOR TELEPHONE.
20. CONDUCTORS SHALL BE COPPER, MINIMUM #12 A.W.G., WITH TYPE THWN INSULATION.
21. RACEWAY FITTINGS SHALL BE GALVANIZED STEEL, CODE APPROVED TYPE.
22. ALL BRANCH CIRCUITS SHALL BE GROUPED INTO PHASE BALANCED MULTIPLE CIRCUIT HOMERUNS. A MAXIMUM OF 6 CIRCUITS PER SINGLE HOMERUN.
23. THE ELECTRICAL CONTRACTOR SHALL PROVIDE A COMPLETE CONDUCTOR AND RACEWAY SYSTEM FOR ALL CIRCUIT DEVICES INDICATED ON THE PLANS EVEN THOUGH NOT DELINEATED.
24. WIRES FOR BRANCH CIRCUITS THAT EXCEED 100' IN LENGTH FROM PANEL TO CENTER OF LOAD SHALL NOT BE SMALLER THAN #10 AWG.
25. INSTALLATION OF ALL LIGHTING FIXTURES SHALL INCLUDE ALL NECESSARY CONDUIT (SOLID OR FLEXIBLE), WIRING, JUNCTION BOXES, ETC., FOR CIRCUIT DEVICES.
26. ALL ELECTRICAL EQUIPMENT AND INSTALLATION ABOVE THE CEILING SHALL BE APPROVED FOR PLENUM CONDITIONS AS REQUIRED BY APPLICABLE GOVERNING AUTHORITY.
27. ALL CIRCUITRY TO BE RUN CONCEALED UNLESS OTHERWISE INDICATED.
28. MATERIAL AND EQUIPMENT SHALL MATCH BUILDING STANDARD UNLESS NOTED OTHERWISE.

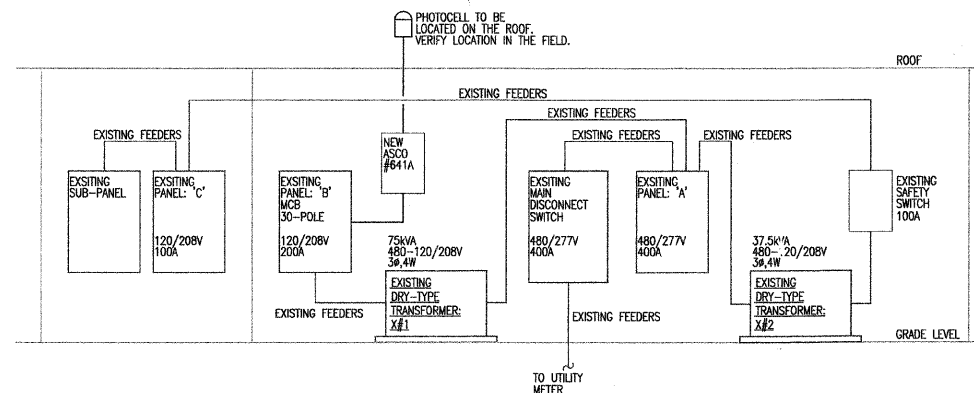
### VOLTAGE DROP CALCULATIONS

<p>BRANCH LIGHTING TYPE 'A'                  RUN LENGTH: 80FT                  CABLE SIZE: 12AWG                  AMPACITY SERVICE: 1.48A                  CURRENT RESISTANCE: 2.0                  120V 1φ CONNECTION</p> <p><math>V(d) = \text{RESISTANCE} \times (\text{LENGTH}/1000) \times \text{AMPACITY}</math>  <math>= 2.0 \times (96/1000) \times 1.46</math>  <math>= 0.289V</math></p> <p><math>\%V(d) = [V(d)/120V] \times 100</math>  <math>= (0.289/120) \times 100</math>  <math>= 0.241\%</math></p>	<p>BRANCH LIGHTING TYPE 'B'                  RUN LENGTH: 80FT                  CABLE SIZE: 12AWG                  AMPACITY SERVICE: 1.48A                  CURRENT RESISTANCE: 2.0                  120V 1φ CONNECTION</p> <p><math>V(d) = \text{RESISTANCE} \times (\text{LENGTH}/1000) \times \text{AMPACITY}</math>  <math>= 2.0 \times (68/1000) \times 1.46</math>  <math>= 0.257V</math></p> <p><math>\%V(d) = [V(d)/120V] \times 100</math>  <math>= (0.257/120) \times 100</math>  <math>= 0.214\%</math></p>	<p>BRANCH LIGHTING TYPE 'C'                  RUN OVER 100FT TO MAX: 110FT                  CABLE SIZE: 10AWG                  AMPACITY SERVICE: 4.5A                  CURRENT RESISTANCE: 1.2                  120V 1φ CONNECTION</p> <p><math>V(d) = \text{RESISTANCE} \times (\text{LENGTH}/1000) \times \text{AMPACITY}</math>  <math>= 1.2 \times (110/1000) \times 4.5</math>  <math>= 0.594V</math></p> <p><math>\%V(d) = [V(d)/120V] \times 100</math>  <math>= (0.594/120) \times 100</math>  <math>= 0.495\%</math></p>
---	---	--

CONDUCTORS FOR BRANCH CIRCUITS SHALL BE SIZED TO PREVENT A VOLTAGE DROP NOT TO EXCEED 3% AT THE FARTHEST LOAD PER VILLAGE OF RIVERSIDE AND NEC CODE SECTION 210.19.

CONDUCTORS FOR FEEDERS SHALL BE SIZED TO PREVENT A VOLTAGE DROP NOT TO EXCEED 3% AT THE FARTHEST LOAD PER VILLAGE OF RIVERSIDE AND NEC CODE SECTION 215.2.

ALL FEEDERS GREATER THAN 100' IN LENGTH SHALL BE SIZED ONE GAGE LARGER TO COMPLY WITH THIS SECTION.



**RIVERSIDE TOWER-RISER DIAGRAM**

SCALE: N.T.S.

PANEL DESIGNATION: 'B'									
SERVICE: 120/208 VOLTS, 3 φ, 4 WIRES					<input type="checkbox"/> M.L.O.				
BUS SIZE: 200 AMPS					<input type="checkbox"/> MAIN O.C. DEVICE - SIZE: 200 AMPS				
LOCATION: ELECTRIC CLOSET					<input type="checkbox"/> GND BUS <input type="checkbox"/> ISO GND BUS				
CCT#	AMPS	PHASE A	PHASE B	PHASE C	AMPS	PHASE A	PHASE B	PHASE C	CCT#
1	100/3	9600	1080		20/1	REC - ELECTRICAL ROOM			2
3			9600	600	20/1	LIGHTING CONTROLLER			4
5			3840	175	20/1	EXISTING			6
7					20/1	LTC - FIXTURE TYPE 'A'			8
9	40/3		3840	175	20/1	LTC - FIXTURE TYPE 'B'			10
11					20/1	LTC - FIXTURE TYPE 'C'			12
13	20/1	0	0		20/1	EXISTING			14
15	20/1		0	0	20/1	EXISTING			16
17	20/1			0	20/1	EXISTING			18
19	20/1	0	0		20/1	EXISTING			20
21	20/1		0	0	20/1	EXISTING			22
23	20/1			0	20/1	EXISTING			24
25	20/1	0	0		20/1	EXISTING			26
27	20/1			0	20/1	EXISTING			28
29	20/1				20/1	EXISTING			30
TOTAL VA PER PHASE		14,695	14,215	13,980	TOTAL VA THIS PANEL		42,890		
TOTAL PANEL LOAD: 42.9 kVA, 119.1 AMPS									



**BES** BUILDING ENGINEERING SYSTEMS, LLC  
 MECHANICAL, ELECTRICAL, PLUMBING AND FIRE PROTECTION ENGINEERING  
 444 N. WELLS STREET  
 SUITE 501  
 CHICAGO, IL 60654  
 T (312) 836-0595  
 F (312) 836-0596  
 www.besengr.com

REVISIONS	
NAME	DATE
ISSUE FOR PERMIT	02.06.09

ILLINOIS DEPARTMENT OF TRANSPORTATION  
 FAU ROUTES 1472 & 3569  
 VILLAGE OF RIVERSIDE  
 RAILWAY/WATER TOWER CAMPUS RESTORATION PROJECT

**ELECTRICAL NOTES, RISER & SCHEDULES**

SCALE: AS NOTED      DRAWN BY:  
 DATE: FEBRUARY 6, 2009      CHECKED BY: