

FOR INDEX OF SHEETS, SEE SHEET NO. 2

FOR INDEX OF HIGHWAY STANDARDS, SEE SHEET NO. 2

PROJECT LOCATED IN THE VILLAGE OF WINTHROP HARBOR

STATE OF ILLINOIS
DEPARTMENT OF TRANSPORTATION
DIVISION OF HIGHWAYS

PLANS FOR PROPOSED
FEDERAL AID HIGHWAY

F.A.P. ROUTE 352 ILLINOIS ROUTE 137 (SHERIDAN ROAD)
AND 7th STREET

STREETSCAPING AND STREET LIGHTING
PROJECT No.: ARA-00D1(810)
SECTION No.: 06-00036-00-LS
JOB No: C-91-197-10
VILLAGE OF WINTHROP HARBOR

| F.A. RTE. | SECTION | COUNTY | TOTAL SHEETS | SHEET NO. |
|--|----------------|--------|--------------|-----------|
| 06-00036-00-LS | 06-00036-00-LS | LAKE | 70 | 1 |
| STA. TO STA. | | | | |
| FED. ROAD DIST. NO. 1 ILLINOIS FED AID PROJECT ARA-00D1(810) | | | | |
| JOB NO. C-91-197-10 | | | | |
| F.A.P. 352 ILLINOIS ROUTE 137 (SHERIDAN ROAD) CONTRACT No: 63167 | | | | |



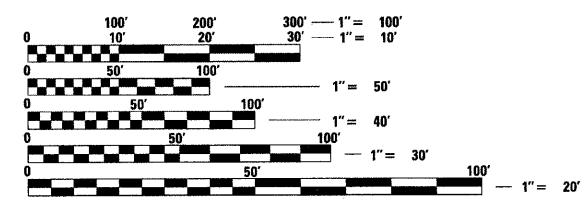
LOCATION OF SECTION INDICATED THUS: [Symbol]

PROJECT NUMBER: ARA-00D1(810)
7th STREET
BEGIN STREETSCAPE IMPROVEMENTS
STA. 6+44

PROJECT NUMBER: ARA-00D1(810)
F.A.P. ROUTE 352 ILLINOIS ROUTE 137
(SHERIDAN ROAD)
END STREETSCAPE IMPROVEMENTS
STA. 54+74

DESIGN DESIGNATION
F.A.P. ROUTE 352 ILLINOIS ROUTE 137 (SHERIDAN ROAD)
1,120 (08) MINOR ARTERIAL, 3.16 (B-0)
7TH STREET
170 (08) LOCAL COLLECTOR, 0.5 (B-0)

TRAFFIC DATA
SHERIDAN ROAD
POSTED & DESIGN SPEED LIMIT = 30 MPH
2008 ADT = 11,200
7th STREET
POSTED & DESIGN SPEED LIMIT = 25 MPH
2008 ADT = 1,700



FULL SIZE PLANS HAVE BEEN PREPARED USING STANDARD ENGINEERING SCALES. REDUCED SIZED PLANS WILL NOT CONFORM TO STANDARD SCALES. IN MAKING MEASUREMENTS ON REDUCED PLANS, THE ABOVE SCALES MAY BE USED.

JULIE, I.E. DESIGN STAGE REQUEST
DIG. No. []

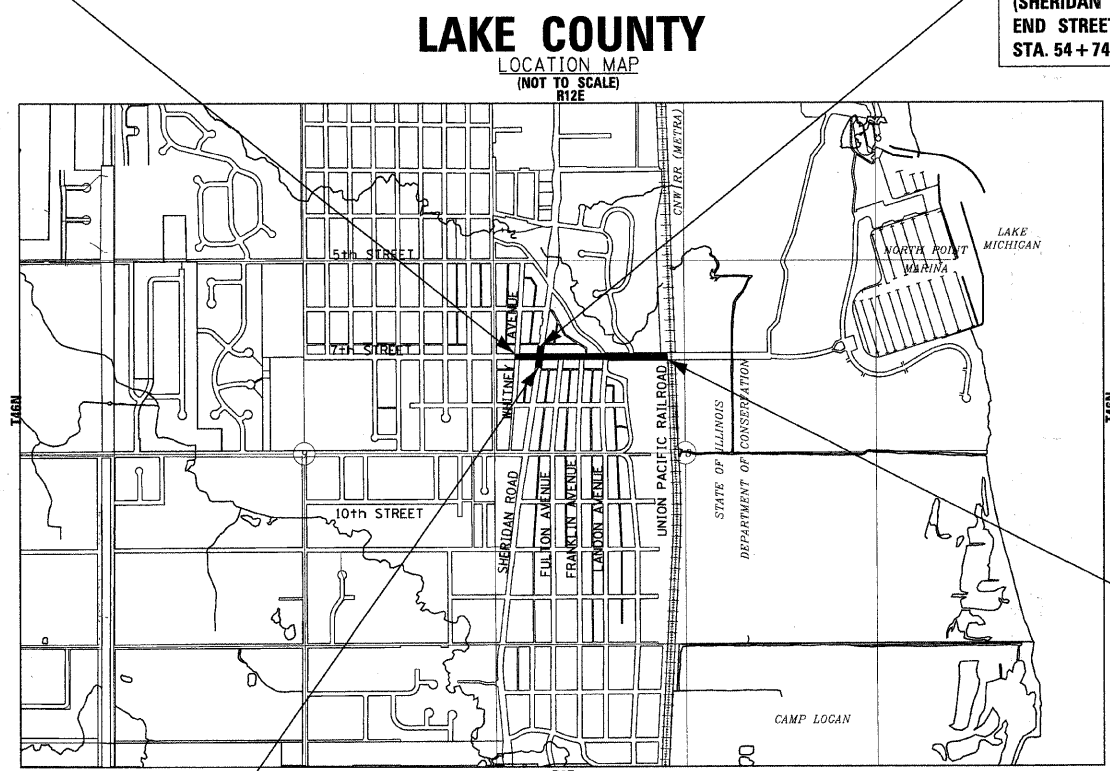
Call Before You Dig

JULIE
ILLINOIS ONE-CALL SYSTEM

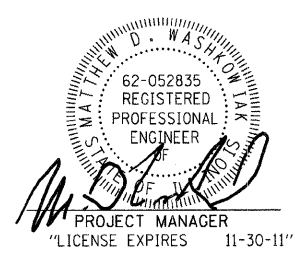
CONTACT JULIE AT 811 OR 800-892-0123 WITH THE FOLLOWING:
COUNTY = LAKE
CITY-TOWNSHIP = WINTHROP HARBOR-BENTON
SEC. & 1/4 SEC. NO. = 10 NW 1/4
48 HOURS (2 working days) BEFORE YOU DIG

PROJECT NUMBER: ARA-00D1(810)
F.A.P. ROUTE 352 ILLINOIS ROUTE 137
(SHERIDAN ROAD)
BEGIN STREETSCAPE IMPROVEMENTS
STA. 46+69

BENTON TOWNSHIP
GROSS LENGTH OF IMPROVEMENT = 2,922 LF OR 0.553 MILES
NET LENGTH OF IMPROVEMENT = 2,922 LF OR 0.553 MILES



COPYRIGHT 2009, BY BAXTER & WOODMAN, INC.
STATE OF ILLINOIS - PROFESSIONAL DESIGN FIRM
LICENSE NO. - 184-001121 - EXPIRES 4/30/2011



STATE OF ILLINOIS
DEPARTMENT OF TRANSPORTATION
DIVISION OF HIGHWAYS

APPROVED: [Signature] OCT 15 2009
VILLAGE OF WINTHROP HARBOR, MAYOR

PASSED: [Signature] DECEMBER 1, 2009
DISTRICT 1 ENGINEER OF LOCAL ROADS AND STREETS

RELEASING FOR BID BASED ON LIMITED REVIEW: [Signature] DECEMBER 1, 2009
DEPUTY DIRECTOR OF HIGHWAYS, REGION 1 ENGINEER

PRINTED BY THE AUTHORITY
OF THE STATE OF ILLINOIS

CONTRACT NO. 63167

Burlington, Wisconsin 262.763.7834 Chicago, Illinois 312.578.0050 Crystal Lake, Illinois 815.459.1260 DeKalb, Illinois 815.787.3111 Grayslake, Illinois 847.223.5088 Itasca, Illinois 630.773.1870 Madison, Wisconsin 608.347.1542 Mokena, Illinois 708.478.2090 Plainfield, Illinois 815.609.7425

(OFFICE WHICH PREPARED PLANS)

B&W PROJECT NO.: 060807 DATE: 10-5-09

COPYRIGHT © 2009 BY BAXTER & WOODMAN, INC.
 LICENSE NO. 184-001121 - EXPIRES 4/30/2011
 2639mc
 ASSOCIATE FIELD ENGINEER: KEVIN STALLWORTH, PE / 847-705-4169