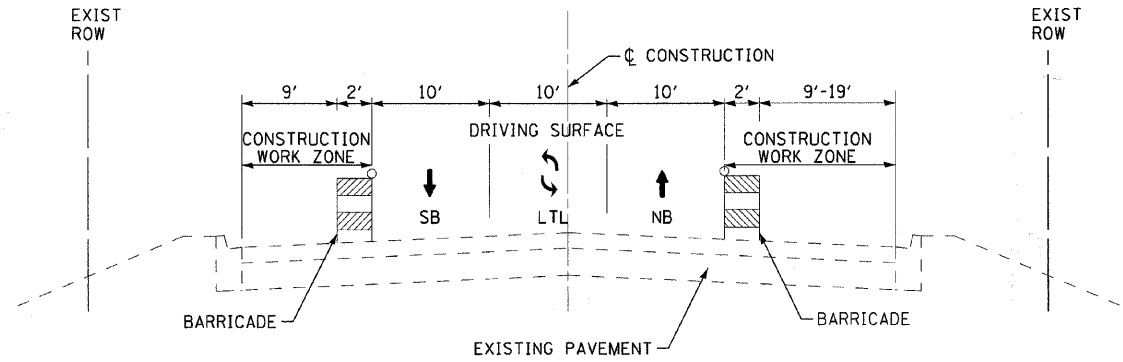


MAINTENANCE OF TRAFFIC AND CONSTRUCTION STAGING

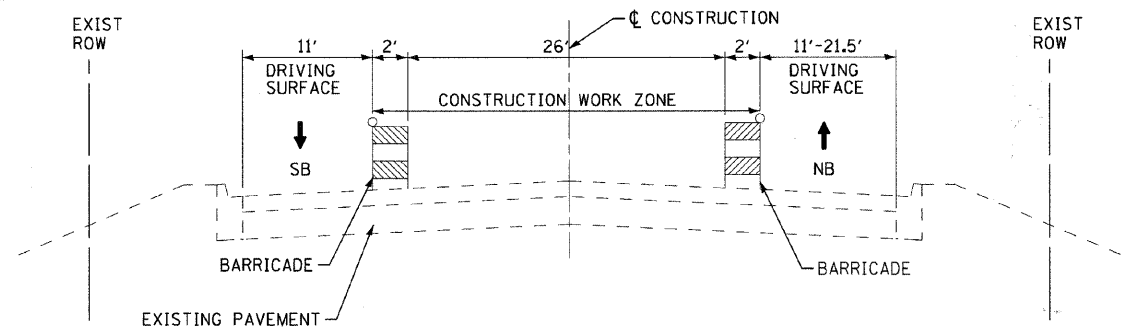
SOIL EROSION AND SEDIMENT CONTROL NOTES

1. SOIL EROSION AND SEDIMENT CONTROL FEATURES SHALL BE CONSTRUCTED PRIOR TO THE COMMENCEMENT OF UPLAND DISTURBANCE.
2. ALL STORM SEWER FACILITIES THAT ARE OR WILL BE FUNCTIONING DURING CONSTRUCTION SHALL BE PROTECTED, FILTERED, OR OTHERWISE TREATED TO REMOVE SEDIMENT.
3. ALL TEMPORARY AND PERMANENT EROSION CONTROL MEASURES MUST BE MAINTAINED AND REPAIRED AS NEEDED. THE GENERAL CONTRACTOR WILL BE RESPONSIBLE FOR INSPECTION AND REPAIR DURING CONSTRUCTION.
4. SOIL DISTURBANCE SHALL BE CONDUCTED IN SUCH A MANNER AS TO MINIMIZE EROSION. SOIL STABILIZATION MEASURES SHALL CONSIDER THE TIME OF YEAR, SITE CONDITIONS AND THE USE OF TEMPORARY OR PERMANENT MEASURES.
5. SOIL EROSION AND SEDIMENT CONTROL FEATURES SHALL BE CONSTRUCTED PRIOR TO THE COMMENCEMENT OF HYDROLOGIC DISTURBANCE OF UPLAND AREAS.
6. DISTURBED AREAS SHALL BE STABILIZED WITH TEMPORARY OR PERMANENT MEASURES WITHIN 14 CALENDAR DAYS OF THE END OF ACTIVE HYDROLOGIC DISTURBANCE, OR REDISTURBANCE.
7. AREAS OF EMBANKMENTS HAVING SLOPES GREATER THAN OR EQUAL TO 3H:1V, AND APPROVED BY THE ENFORCEMENT OFFICER, SHALL BE STABILIZED WITH TOPSOIL FURNISH AND PLACE, 4" IN COMBINATION WITH SODDING, SALT TOLERANT.
8. ALL TEMPORARY EROSION AND SEDIMENT CONTROL MEASURES SHALL BE REMOVED WITHIN 30 DAYS AFTER FINAL SITE STABILIZATION IS ACHIEVED OR AFTER THE TEMPORARY MEASURES ARE NO LONGER NEEDED.
9. AN APPROPRIATE CLEANING MEASURE SHALL BE LOCATED WHERE TRAFFIC WILL BE ENTERING OR LEAVING THE CONSTRUCTION SITE / PUBLIC RIGHT-OF-WAY, STREET, ALLEY OR PARKING AREA. ANY SEDIMENT OR SOIL REACHING THE PUBLIC RIGHT-OF-WAY, STREET, ALLEY OR PARKING AREA SHALL BE REMOVED BY SCRAPING OR STREET CLEANING AS ACCUMULATIONS WARRANT AND TRANSPORTED TO A CONTROLLED OFF-SITE SEDIMENT DISPOSAL AREA. THE COSTS ASSOCIATED WITH THESE ITEMS SHALL BE INCLUDED IN THE COST OF THE CONTRACT.
10. SOIL STOCKPILES SHALL NOT BE LOCATED IN A FLOOD PRONE AREA OR A DESIGNATED BUFFER PROTECTING WATERS OF THE UNITED STATES OR ISOLATED WATERS OF LAKE COUNTY.
11. IF DEWATERING SERVICES ARE USED, ADJOINING PROPERTIES AND DISCHARGE LOCATIONS SHALL BE PROTECTED FROM EROSION. DISCHARGES SHALL BE ROUTED THROUGH AN EFFECTIVE SEDIMENT CONTROL MEASURE (i.e.: SEDIMENT TRAP, SEDIMENT BASIN, OR OTHER APPROPRIATE MEASURES).
12. THE EROSION CONTROL MEASURES INDICATED ON THE PLANS ARE THE MINIMUM REQUIREMENTS. ADDITIONAL MEASURES MAY BE REQUIRED, AS DETERMINED BY THE ENGINEER OR GOVERNING AGENCY.
13. TOPSOIL FURNISH AND PLACE, 4" IN COMBINATION WITH SODDING OR SODDING, SALT TOLERANT WILL BE USED ON ALL DISTURBED AREAS.

14. MAINTENANCE OF PERIMETER EROSION BARRIER INCLUDED IN THIS PAY ITEM IN ACCORDANCE WITH BDE SPECIAL PROVISION.



**STAGE I TYPICAL SECTION
ILLINOIS ROUTE 137 (SHERIDAN ROAD)**



**STAGE II TYPICAL SECTION
ILLINOIS ROUTE 137 (SHERIDAN ROAD)**

GENERAL NOTES

1. THE CONTRACTOR SHALL MAINTAIN EXISTING LANE WIDTHS FOR TRAFFIC FLOW THROUGHOUT THE DURATION OF THE CONTRACT UNLESS OTHERWISE DETERMINED BY THE ENGINEER. ALL SHORT TERM PAVEMENT MARKINGS, TAPERS, LANE SHIFTS OR MODIFICATIONS TO TRAFFIC SIGNALS SHALL BE ACCORDING TO MUTCD AND ANY HIGHWAY STANDARDS. THIS WORK SHALL BE INCLUDED IN THE TRAFFIC CONTROL AND PROTECTION PAY ITEM UNLESS AN APPLICABLE PAY ITEM IS PROVIDED.
2. ALL SIDE STREETS SHALL BE OPEN TO TRAFFIC THROUGHOUT THE DURATION OF THE CONTRACT.
3. THE CONTRACTOR SHALL NOTIFY THE VILLAGE A MINIMUM OF 72 HOURS PRIOR TO CONSTRUCTION OPERATIONS INVOLVING THE TEMPORARY CLOSING OF DRIVES. THE CONTRACTOR SHALL PROVIDE A 48-HOUR NOTICE TO AFFECTED PARTIES BY DISTRIBUTING WRITTEN NOTICES AND/OR POSTING SIGNS.
4. BUSINESSES SHALL HAVE ACCESS TO THEIR BUSINESSES AND DRIVES.
5. THE ENGINEER SHALL BE INFORMED 72-HOURS IN ADVANCE OF ANY CHANGE IN CONSTRUCTION STAGING.
6. TYPE I BARRICADES, BARRELS AND VERTICAL PANELS SHALL BE EQUIPPED WITH MONO-DIRECTIONAL STEADY BURN LIGHTS AND SHALL BE PLACED AT 50-FOOT INTERVALS ALONG THE PROPOSED CONSTRUCTION ZONE AND 25-FOOT INTERVALS WITHIN TAPER SECTIONS OR AS DETERMINED BY THE ENGINEER.
7. UTILIZE SHORT TERM PAVEMENT MARKINGS ON ILLINOIS ROUTE 137 (SHERIDAN ROAD) AND 7TH STREET. SHORT-TERM PAVEMENT MARKINGS SHALL NOT DAMAGE EXISTING PAVEMENT MARKINGS TO REMAIN. ANY AND ALL REPLACEMENT OF EXISTING PAVEMENT MARKINGS, AS DETERMINED BY THE ENGINEER, SHALL BE INCLUDED IN THE TRAFFIC CONTROL AND PROTECTION PAY ITEM.
8. ALL SHORT-TERM PAVEMENT MARKINGS SHOWING DETERIORATION SHALL BE REPLACED BY THE CONTRACTOR AS DETERMINED BY THE ENGINEER. ALL MARKINGS REQUIRING REPLACEMENT SHALL BE REPLACED BY THE CONTRACTOR AT HIS OWN EXPENSE.
9. THE FURNISHING, INSTALLING AND RELOCATION OF ALL TRAFFIC SIGNS SHALL BE INCLUDED IN THE TRAFFIC CONTROL AND PROTECTION PAY ITEM. ALL CONFLICTING TRAFFIC SIGNS SHALL BE COVERED AS DETERMINED BY THE ENGINEER. THIS SHALL BE INCLUDED IN THE TRAFFIC CONTROL AND PROTECTION PAY ITEM.
10. CONTRACTOR SHALL ESTABLISH A 30 MPH CONSTRUCTION ZONE SPEED LIMIT ON ILLINOIS ROUTE 137 (SHERIDAN ROAD) AND A 25 MPH CONSTRUCTION ZONE SPEED LIMIT ON 7TH STREET.

MAINTENANCE OF TRAFFIC AND CONSTRUCTION STAGING

EMERGENCY SERVICES NOTIFICATION

EMERGENCY ACCESS SHALL BE MAINTAINED AT ALL TIMES.

THE CONTRACTOR SHALL ADVISE ALL EMERGENCY RESPONDERS A MINIMUM OF 3 DAYS IN ADVANCE OF CONSTRUCTION ACTIVITIES WHICH IMPACT ALL EMERGENCY SERVICES. THIS WILL INCLUDE, BUT IS NOT LIMITED TO, THE WINTHROP HARBOR EMERGENCY SERVICES DISASTER AGENCY.

SUGGESTED SEQUENCE OF CONSTRUCTION

1. INSTALL TRAFFIC CONTROL AND SOIL EROSION AND SEDIMENT CONTROL MEASURES.
2. (COMPLETE PRIOR TO MAY 1, 2010)
INSTALL PRELIMINARY TEST STRIP, DRAINAGE AND UTILITY IMPROVEMENTS AND STREET LIGHTING.
3. (COMPLETE PRIOR TO JUNE 1, 2010)
ILLINOIS ROUTE 137 (SHERIDAN ROAD) AT 7TH STREET;
REMOVE PAVEMENT, INSTALL CROSSWALKS, RESURFACE, INSTALL PAVEMENT MARKINGS AND DETECTOR LOOPS AS SHOWN IN STAGE I AND II TYPICAL SECTIONS. COMPLETE CROSSWALK INSTALLATION ON 7TH STREET ONE SIDE OF THE ROADWAY AT A TIME.
(UTILIZE HIGH-EARLY STRENGTH CONCRETE FOR ALL CROSSWALK CONCRETE CONSTRUCTION).
4. (COMPLETE PRIOR TO JULY 15, 2010)
ILLINOIS ROUTE 137 (SHERIDAN ROAD) AND 7TH STREET;
REMOVE AND REPLACE SIDEWALK, DRIVEWAYS, CURBS AND PAVEMENT OUTSIDE OF STA 10+00 TO STA 13+00 (DOWNTOWN AREA).
5. (BEGIN SEPTEMBER 7, 2010 AND COMPLETE PRIOR TO OCTOBER 15, 2010)
7TH STREET;
REMOVE AND CONSTRUCT REMAINING SIDEWALKS, DRIVEWAYS, AND CURBS. MAINTAIN BUSINESS ACCESS AT ALL TIMES.
6. INSTALL PERMANENT STABILIZATION, FINALIZE LIGHTING AND COMPLETE PUNCH LIST ITEMS.
7. COMPLETION DATE - DECEMBER 7, 2010.
(254 CALENDAR DAYS FROM MARCH 29, 2010 TO DECEMBER 7, 2010).

SCHEDULE OF EROSION CONTROL QUANTITIES

TEMPORARY DITCH CHECKS	FOOT	140
PERIMETER EROSION BARRIER (INCLUDES MAINTENANCE)	FOOT	2,660
INLET FILTERS	EACH	22
TREE TRUNK PROTECTION	EACH	3
TREE ROOT PRUNING	EACH	3
TEMPORARY EROSION CONTROL SEEDING	POUND	121
MULCH, METHOD 1	ACRE	1

• F.A.P. 352 ILLINOIS ROUTE 137 (SHERIDAN ROAD)

COPYRIGHT © 2005 BY BAXTER & WOODMAN, INC.
 STATE OF ILLINOIS - PROFESSIONAL DESIGN FIRM
 LICENSE NO. - 183-048801-01-100001-00000001-01
 11/10/2005 11:38:51 AM 11/10/2005 11:38:51 AM 11/10/2005 11:38:51 AM



DESIGNED - MWP	REVISED - IDOT REVIEW 2/19/09
DRAWN - CJC	REVISED - IDOT REVIEW 4/22/09
CHECKED - MDW	REVISED - IDOT REVIEW 11/17/09
DATE - 8-1-08	REVISED -

**VILLAGE OF WINTHROP HARBOR, ILLINOIS
ILLINOIS ROUTE 137 (SHERIDAN ROAD) AND 7th STREET
STREETSCAPE IMPROVEMENTS**

**MAINTENANCE OF TRAFFIC, CONSTRUCTION STAGING
AND EROSION AND SEDIMENT CONTROL NOTES**

SCALE: NONE

STA. TO STA.

F.A.P. RTE.	SECTION	COUNTY	TOTAL SHEETS	SHEET NO.
*	06-00036-00-LS	LAKE	70	23
FED. ROAD DIST. NO. 1		CONTRACT NO. 63167		
JOB NO. C-91-197-10		ILLINOIS FED. AID PROJECT ARA-00D(IG)D		