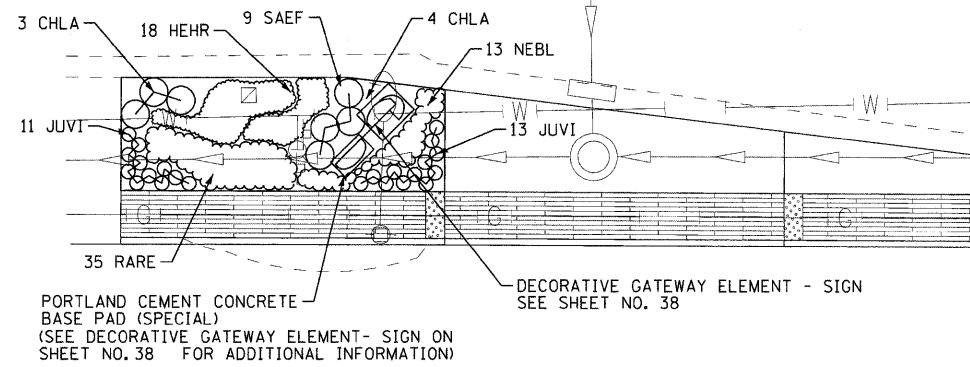


ILLINOIS ROUTE 137 (SHERIDAN ROAD)



ILLINOIS ROUTE 137 (SHERIDAN ROAD)

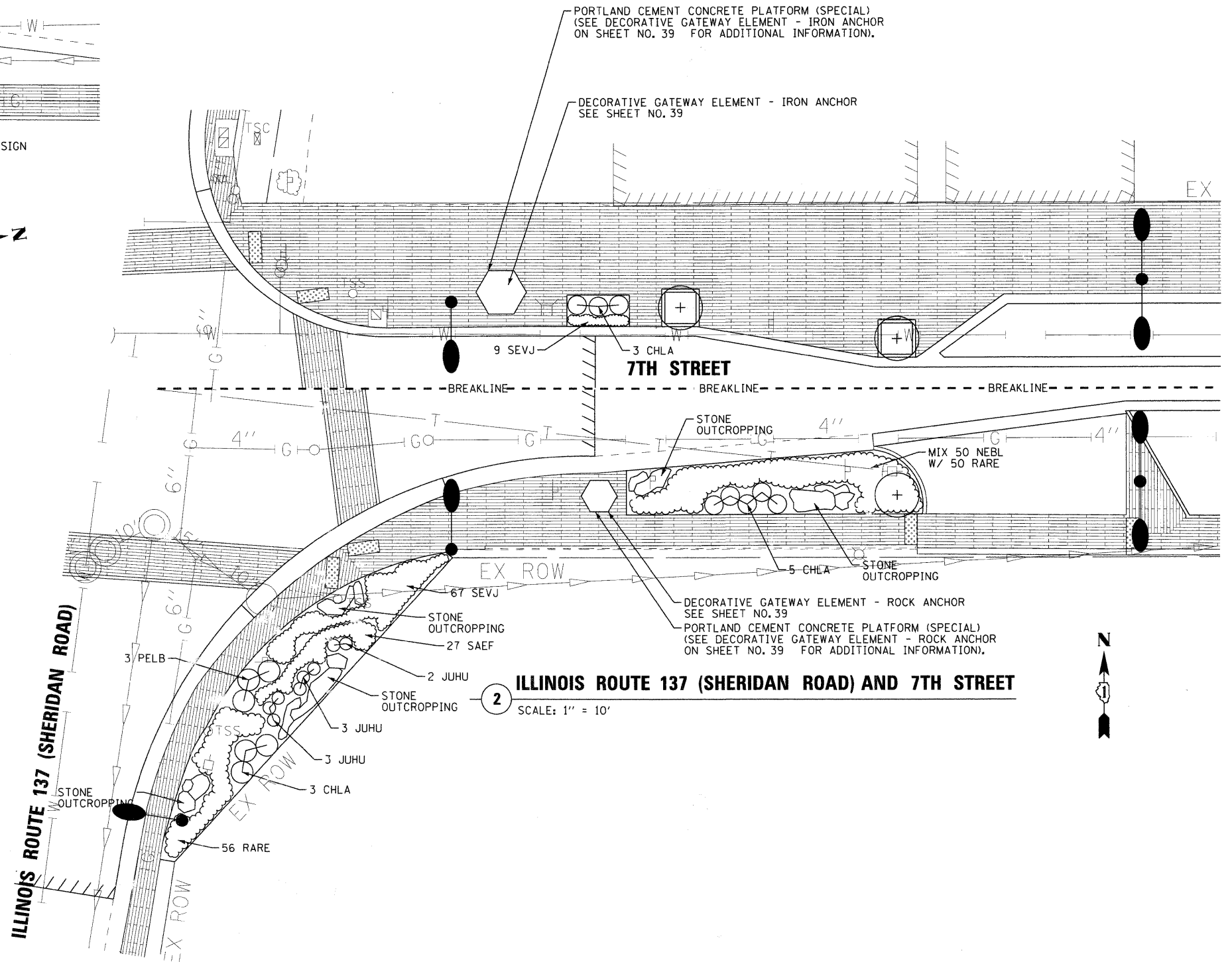
SCALE: 1" = 10'

SCHEDULE OF PERENNIAL PLANT MATERIAL

PERENNIAL	ABBREV.	QTY. (UNIT)	TOTAL QTY. SHEETS 35-37
PERENNIAL PLANTS, CHASMANTHIUM LATIFOLIUM (NORTHERN SEA OATS), 1 GALLON	CHLA	0.18	0.62
PERENNIAL PLANTS, PENNISETUM ALOPECUROIDES (FOUNTAIN GRASS), 1 GALLON	PELB	0.03	0.03
HEMEROCALLIS HAPPY RETURNS (HAPPY RETURNS DAYLILY), 1 GALLON	HEHR	0.18	1.52
NEPETA FASSINI BLUE WONDER (BLUE WONDER CATMINT), 1 GALLON	NEBL	0.63	1.98
PERENNIAL, RANUNCULUS REPENS (CREEPING BUTTERCUP), 1 GALLON	RARE	1.41	1.41
PERENNIAL, SEDUM VERA JAMESON (VERA JAMESON SEDUM), 1 GALLON	SEVJ	0.76	0.76
PERENNIAL, SALVIA NEMEROSA EAST FREISLAND (EAST FRIESLAND SALVIA), 1 GALLON	SAEF	0.36	0.36
SCHIZACHYRIUM SCOPARIUM	SCSC	0.00	0.14
LIATRIS SPICATA (BLAZING STAR), 1 GALLON	Liko	0.00	1.00

SCHEDULE OF EVERGREEN PLANT MATERIAL

EVERGREEN	ABBREV.	QTY. (UNIT)	TOTAL QTY. SHEETS 35-37
EVERGREEN, JUNIPERUS HORIZONTALIS HUGHES (HUGHES JUNIPER), 18" WIDTH BALLED AND BURLAPPED	JUHU	8	8
EVERGREEN, JUNIPERUS CHINENSIS VAR. SARGENTII VIRIDIS (GREEN SARGENT JUNIPER), 1-1/2", BALLED AND BURLAPPED	JUVI	24	24



ILLINOIS ROUTE 137 (SHERIDAN ROAD) AND 7TH STREET

SCALE: 1" = 10'

COPYRIGHT © 2009 BY BAXTER & WOODMAN, INC.
 STATE OF ILLINOIS - PROFESSIONAL DESIGN FIRM
 LICENSE NO. 184-00121 - EXPIRES 4/30/2011
 10/12/2009 4:05:54 PM



DESIGNED - MWP	REVISED - IDOT REVIEW 2/19/09
DRAWN - CJC	REVISED - IDOT REVIEW 4/22/09
CHECKED - MDW	REVISED -
DATE - 8-1-08	FILE - 060807-lands-enlarge1.sht

**VILLAGE OF WINTHROP HARBOR, ILLINOIS
ILLINOIS ROUTE 137 (SHERIDAN ROAD) AND 7th STREET
STREETSCAPE IMPROVEMENTS**

**ENLARGED LANDSCAPE PLAN
ILLINOIS ROUTE 134 (SHERIDAN ROAD) AND 7TH STREET**

SCALE: 1" = 10'

STA. TO STA.

F.A.P. RTE.	SECTION	COUNTY	TOTAL SHEETS	SHEET NO.
*	06-00036-00-LS	LAKE	70	35
FED. ROAD DIST. NO. 1			CONTRACT NO. 63167	
JOB NO. C-91-197-10			ILLINOIS FED. AID PROJECT ARA-00018101	

