

STATE OF ILLINOIS
DEPARTMENT OF TRANSPORTATION
DIVISION OF HIGHWAYS

PLANS FOR PROPOSED FEDERAL AID HIGHWAY

INDEX OF SHEETS

1. COVER SHEET
2. SUMMARY OF QUANTITIES AND GENERAL NOTES
- 3.-4. STREET LIGHTING PLANS
5. SINGLE LINE DIAGRAM
- 6.-10. DETAIL DRAWINGS

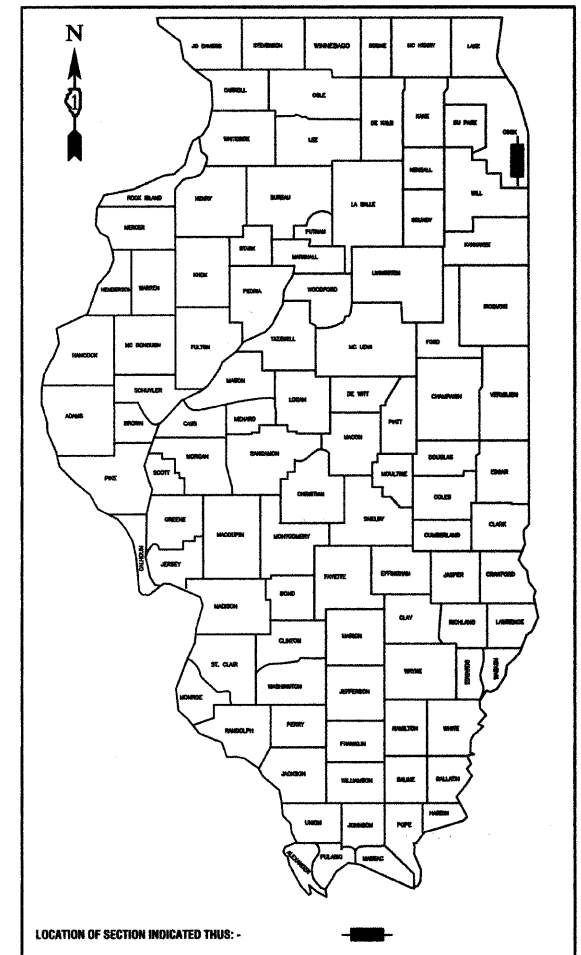
STATE STANDARDS

- 000001-05 STANDARD SYMBOLS, ABBREVIATIONS AND PATTERNS
- 701501-05 URBAN LANE CLOSURE, 2L, 2W, UNDIVIDED
- 701606-06 URBAN LANE CLOSURE, MULTILANE, 2W, WITH MOUNTABLE MEDIAN
- 701701-06 URBAN LANE CLOSURE, MULTILANE INTERSECTION
- 701801-04 LANE CLOSURE, MULTILANE 1W OR 2W CROSSWALK OR SIDEWALK CLOSURE
- 701901-01 TRAFFIC CONTROL DEVICES

FAU 1025 (BROADWAY AVENUE)
STREET LIGHTING
PARK AVENUE (FAU 3597) TO 151ST STREET
SECTION NO.: 09-00182-00-LT
C-91-649-09
CITY OF HARVEY
COOK COUNTY
ARA-9003 (333)

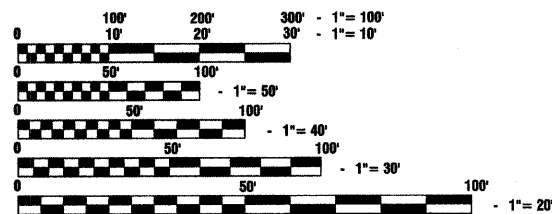
F. A. I. D. NO.	SECTION	COUNTY	TOTAL SHEETS	SHEET NO.
1025	09-00182-00-LT	COOK	10	1
STA.	11+00	TO STA.	39+00	
FED. ROAD DIST. NO. 1	LANES	FED. AID PROJECT ARA-9003 (333)		

CONTRACT #63286



LOCATION OF SECTION INDICATED THUS: -

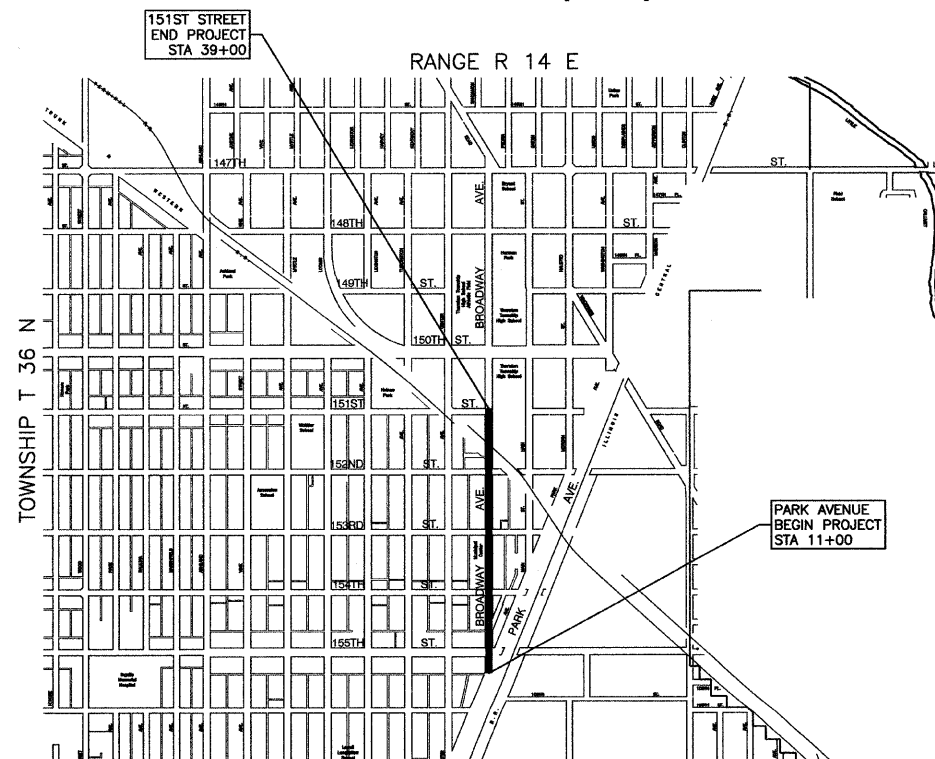
SCALES
 PLAN - 1"=50'
 PROFILE HORIZ. - 1"=50'
 PROFILE VERT. - 1"=5'
 CROSS SECTIONS - 1"=10'



FULL SIZE PLANS HAVE BEEN PREPARED USING STANDARD ENGINEERING SCALES, REDUCED SIZED PLANS WILL NOT CONFORM TO STANDARD SCALES, IN MAKING MEASUREMENTS ON REDUCED PLANS, THE ABOVE SCALES MAY BE USED.

J. U. L. I. E.
 JOINT UTILITY LOCATION INFORMATION FOR EXCAVATION
 1-800-892-0123 or 811

CONTRACT NO. 63286



LOCATION MAP

- INDICATES PROPOSED IMPROVEMENT
 GROSS LENGTH=2,800 FEET=0.53 MILES
 NET LENGTH=2,800 FEET=0.53 MILES

BROADWAY AVENUE COLLECTOR
 ADT=12,000 (2009)
 =12,000 (2030)
 DESIGN SPEED=35 MPH
 SPEED LIMIT= 35 MPH

I.D.O.T. FIELD ENGINEER: MELCHOR MANGOBA: 847-705-4408
 CONSULTANTS: ROBINSON ENGINEERING, LTD. 708-331-6700

STATE OF ILLINOIS DEPARTMENT OF TRANSPORTATION
DIVISION OF HIGHWAYS

Approved: Oct 19, 2009
Eric J. Kelly
 Mayor, City of Harvey

Passed: October 26, 2009
Christopher Holt
 District 1 Engineer of Local Roads & Streets

Released for Bid Based on Limited Review: OCTOBER 26, 2009
Diana M. O'Keefe
 Deputy Director of Highways, Region 1 Engineer *AK*

PRINTED BY THE AUTHORITY OF
THE STATE OF ILLINOIS

PREPARED BY OR UNDER THE
DIRECT SUPERVISION OF:

Edward J. Tinsley
 10/20/09

