

FOR INDEX OF SHEETS, SEE SHEET NO. 2

FOR INDEX OF HIGHWAY STANDARDS, SEE SHEET NO. 2

PROJECT LOCATED IN THE VILLAGE OF BEECHER

STATE OF ILLINOIS
 DEPARTMENT OF TRANSPORTATION
 DIVISION OF HIGHWAYS

PLANS FOR PROPOSED FEDERAL AID HIGHWAY

FAU ROUTE 0407 (CHURCH ROAD)

CHURCH ROAD FROM UNION PACIFIC RAILROAD TRACKS TO IL ROUTE 1 (DIXIE HIGHWAY)

RESURFACING

PROJECT No.: ARA-9003(381)
 SECTION No.: 09-00017-00-RS
 JOB No: C-91-721-09
 VILLAGE OF BEECHER
 WILL COUNTY

F.A.U. RTE.	SECTION	COUNTY	TOTAL SHEETS	SHEET NO.
• 09-00017-00-RS		WILL	9	1
STA.	TO STA.			
FED. ROAD DIST. NO C-91-721-09	ILLINOIS	FED AID PROJECT ARA-9003 (381)		
• FAU 0407 CHURCH ROAD CONTRACT NO. 63303				

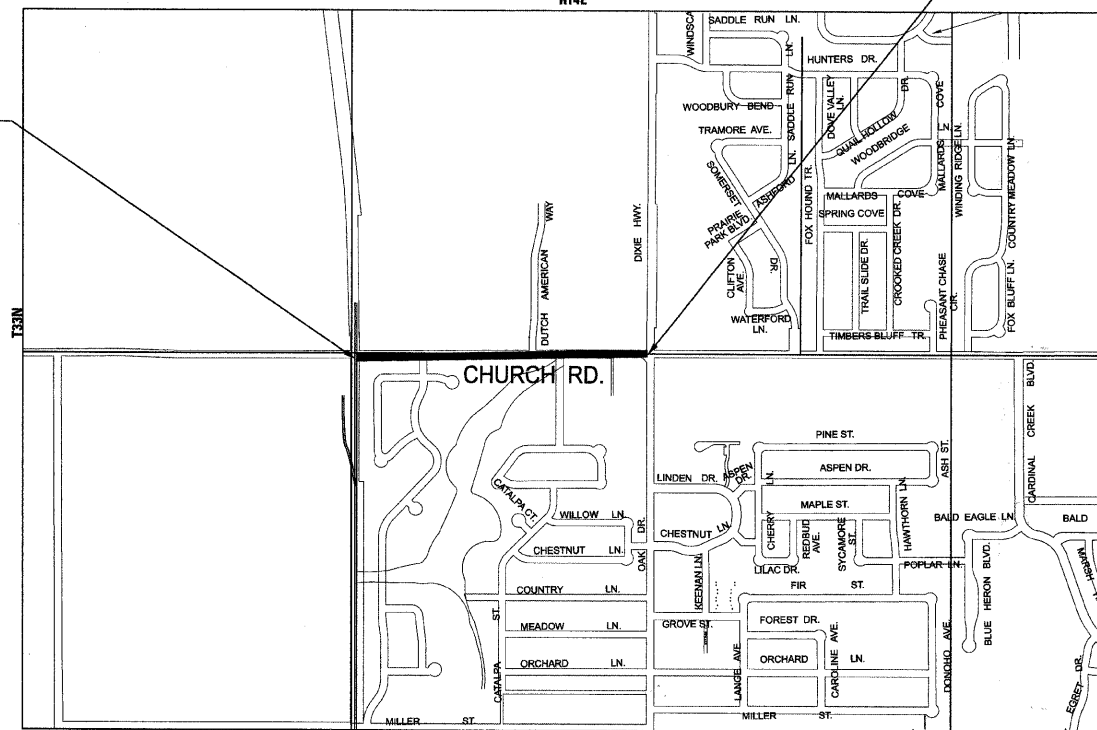
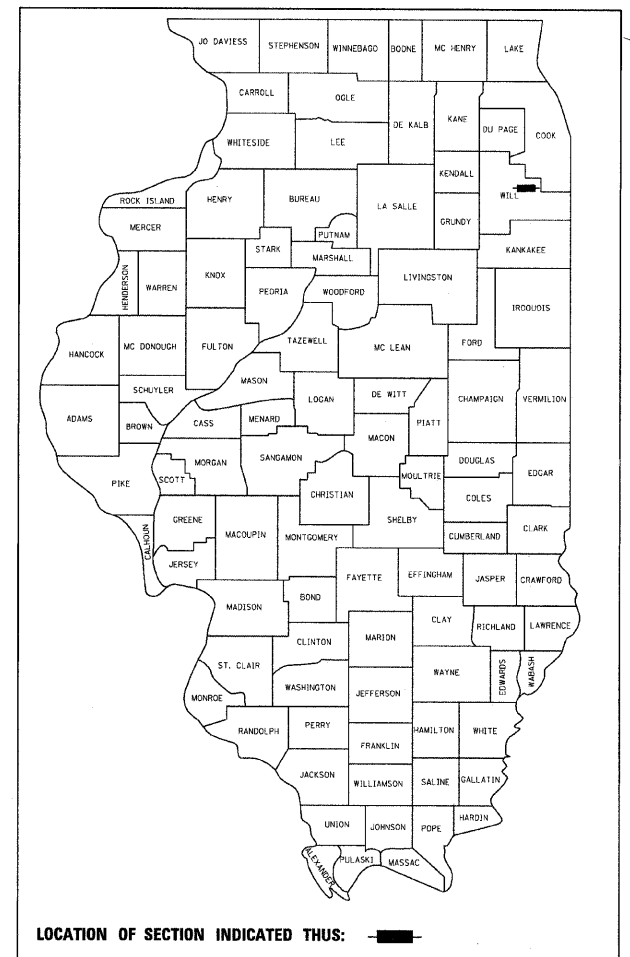
TRAFFIC DATA
 CHURCH ROAD
 POSTED & DESIGN SPEED LIMIT = 30 MPH
 2008 ADT = 2,100

DESIGN DESIGNATION
 COLLECTOR

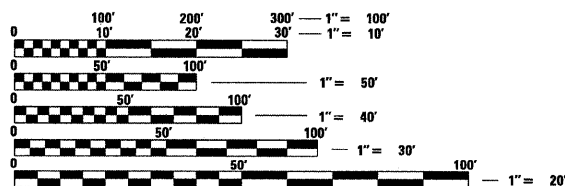
PROJECT NO.: ARA-9003(381)
 FAU 0407 CHURCH ROAD
 PROJECT BEGINS STA 10+00

PROJECT NO.: ARA-9003(381)
 FAU 0407 CHURCH ROAD
 PROJECT ENDS STA 34+00

LOCATION MAP
 (NOT TO SCALE)
 R14E



BAXTER & WOODMAN, INC.
 STATE OF ILLINOIS - PROFESSIONAL DESIGN FIRM
 LICENSE NO. - 184-001121 - EXPIRES 4/30/2011



FULL SIZE PLANS HAVE BEEN PREPARED USING STANDARD ENGINEERING SCALES. REDUCED SIZED PLANS WILL NOT CONFORM TO STANDARD SCALES. IN MAKING MEASUREMENTS ON REDUCED PLANS, THE ABOVE SCALES MAY BE USED.

J.U.L.I.E.
 JOINT UTILITY LOCATION INFORMATION FOR EXCAVATION
 1-800-892-0123

3RD PRINCIPAL MERIDIAN
 WASHINGTON TOWNSHIP
 GROSS LENGTH OF IMPROVEMENT = 2,400 LF OR 0.45 MILES
 NET LENGTH OF IMPROVEMENT = 2,400 LF OR 0.45 MILES



Christine A. Cole 10/7/09
 PROJECT ENGINEER
 "LICENSE EXPIRES 11-30-11"



Nathan J. Peck 10/7/09
 PROJECT MANAGER
 "LICENSE EXPIRES 11-30-11"

STATE OF ILLINOIS
 DEPARTMENT OF TRANSPORTATION
 DIVISION OF HIGHWAYS

APPROVED *October 7, 2009* 20 09
 VILLAGE ADMINISTRATOR
 PASSED *October 26, 2009* 20 09
 DISTRICT 1 ENGINEER OF LOCAL ROADS AND STREETS

RELEASING FOR BID
 BASED ON LIMITED
 REVIEW *October 26, 2009* 20 09
 DEPUTY DIRECTOR OF
 HIGHWAYS, REGION 1 ENGINEER

PRINTED BY THE AUTHORITY
 OF THE STATE OF ILLINOIS

CONTRACT NO. 63303

Burlington, Wisconsin 262.763.7834
 Crystal Lake, Illinois 815.459.1260
 DeKalb, Illinois 815.787.3111
 Itasca, Illinois (Mokena, Illinois) 630.773.1870 708.478.2090
 Grayslake, Illinois 847.223.5088
 Plainfield, Illinois 815.609.7425
 Madison, Wisconsin 608.347.1542
 Chicago, Illinois 312.578.0050

(OFFICE WHICH PREPARED PLANS)

B&W PROJECT NO.: 090280 DATE: 10-06-09

COPYRIGHT © 2009 BY BAXTER & WOODMAN, INC.
 STATE OF ILLINOIS - PROFESSIONAL DESIGN FIRM
 LICENSE NO. - 184-001121 - EXPIRES 4/30/2011
 FIELD ENGINEER MELCHOR MANGOBA, P.E. (847-705-4408)

SUMMARY OF QUANTITIES

CODE NO.	PAY ITEM	UNIT	CONSTRUCTION CODE 1000 TOTAL QUANTITY
40600100	BITUMINOUS MATERIALS (PRIME COAT)	GALLON	600
40600300	AGGREGATE (PRIME COAT)	TON	12
40600625	LEVELING BINDER (MACHINE METHOD), N50	TON	252
40600982	HOT-MIX ASPHALT SURFACE REMOVAL - BUTT JOINT	SQ YD	242
x 40603310	HOT-MIX ASPHALT SURFACE COURSE, MIX "C", N50	TON	504
x 44201717	CLASS D PATCHES, TYPE II, 6 INCH	SQ YD	7
x 44201721	CLASS D PATCHES, TYPE III, 6 INCH	SQ YD	24
x 44201723	CLASS D PATCHES, TYPE IV, 6 INCH	SQ YD	171
67100100	MOBILIZATION	L SUM	1
70102620	TRAFFIC CONTROL AND PROTECTION, STANDARD 701501	L SUM	1
* 78000200	THERMOPLASTIC PAVEMENT MARKING LINE 4"	FOOT	2364
▪ 78000400	THERMOPLASTIC PAVEMENT MARKING LINE 6"	FOOT	20
▪ 78000600	THERMOPLASTIC PAVEMENT MARKING LINE 12"	FOOT	32
▪ 78100100	RAISED REFLECTIVE PAVEMENT MARKER	EACH	21
* 78300200	RAISED REFLECTIVE PAVEMENT MARKER REMOVAL	EACH	21

▪ INDICATES SPECIALTY ITEM
x INDICATES NON-STANDARD ITEM COVERED BY SPECIAL PROVISION

PATCHING SCHEDULE

STA	TO STA	O/S	WIDTH	TYPE II	TYPE III	TYPE IV
10+30	10+86	LT	9.0			56.0
26+90	27+42	RT	12.0			70.0
30+88	31+38	RT	8.0			45.0
31+90	32+02	LT	5.0	7.0		
34+15	34+50	RT	6.0		24.0	
SUBTOTALS				7.0	24.0	171.0
TOTAL						202.0

F.A.U. RTE.	SECTION	COUNTY	TOTAL SHEETS	SHEET NO.
•	09-00017-00-RS	WILL	9	3
STA.	TO STA.			
FED. ROAD DIST. NO.	ILLINOIS	FED AID PROJECT		
C-91-721-09		*ARA-9003(381)		

*FAU 0407 CHURCH ROAD
CONTRACT NO. 63303

COPYRIGHT © 2009 BY BAXTER & WOODMAN, INC.
 STATE OF ILLINOIS - PROFESSIONAL DESIGN FIRM
 BAXTER & WOODMAN, INC. - ILLINOIS LICENSE NO. 040005
 10/21/2009 10:00:05 AM
 \\C:\p\woodman\projects\moke\moke\BEECHER\090280-CHURCH\ROAD-SURVEY\DRAWINGS\090280-S00.sht



USER NAME = 488aac	DESIGNED - JGH	REVISED - PER IDOT 10-6-09
FILE NAME = 090280-S00.sht	DRAWN - BCD	REVISED -
PLOT DATE = 10/21/2009	CHECKED - NJP	REVISED -
	DATE - 07-10-09	REVISED -

**VILLAGE OF BEECHER, ILLINOIS
FAU 0407 CHURCH ROAD
LAPP IMPROVEMENTS**

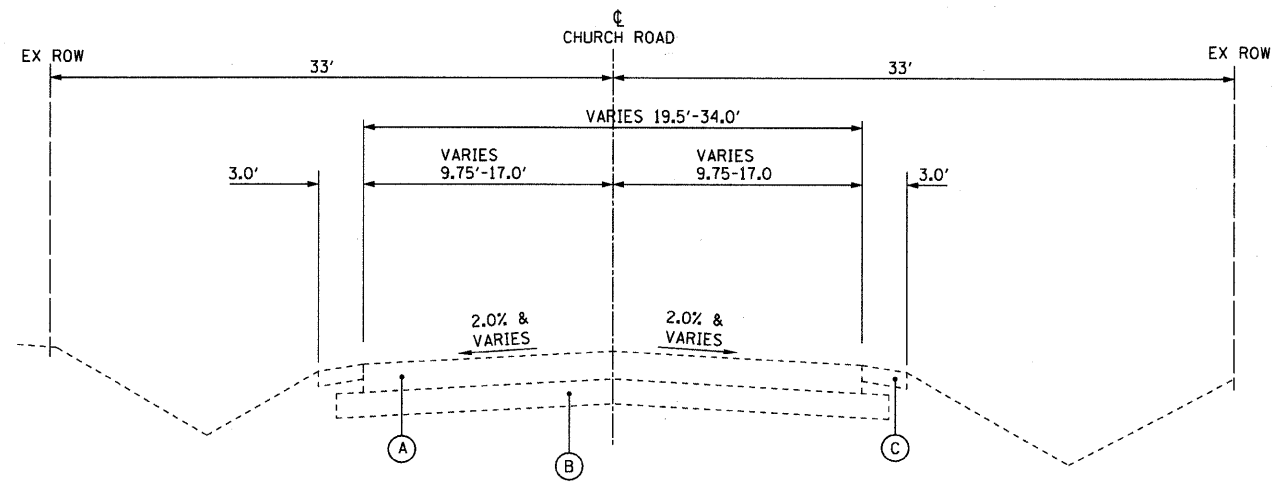
**SUMMARY OF QUANTITIES AND
SCHEDULE OF QUANTITIES**

SCALE: NONE STA. TO STA.

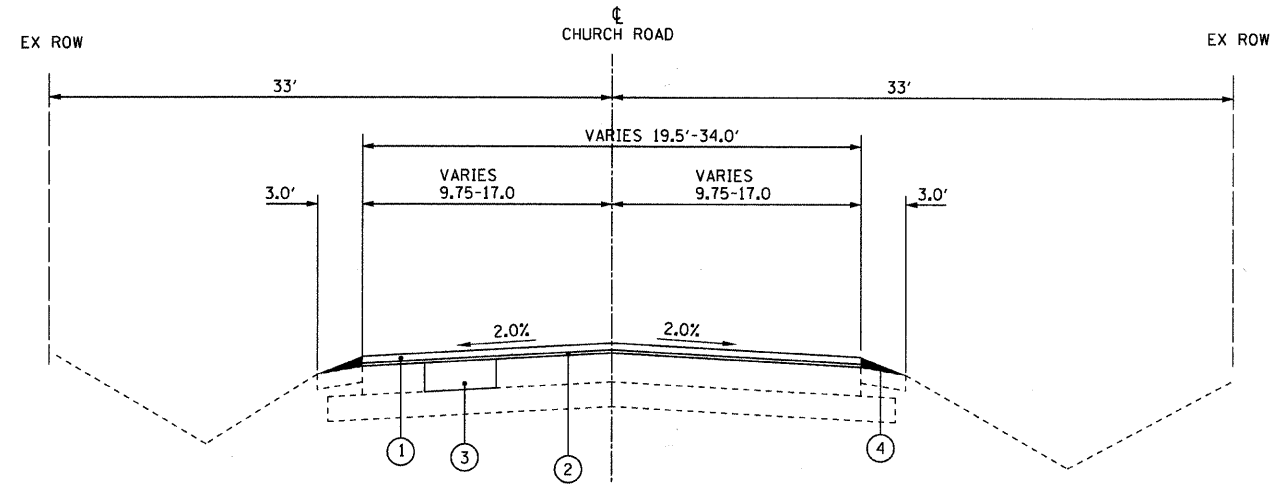
F.A.U. RTE.	SECTION	COUNTY	TOTAL SHEETS	SHEET NO.
•	09-00017-00-RS	WILL	9	3
FED. ROAD DIST. NO.	ILLINOIS	CONTRACT NO. 63303		
		FED. AID PROJECT		

F.A.U. RTE.	SECTION	COUNTY	TOTAL SHEETS	SHEET NO.
* 09-00017-00-RS		WILL	9	4
STA.	TO STA.			
FED. ROAD DIST. NO. C-91-721-09	ILLINOIS	FED AID PROJECT ARA-9003(381)		

FAU 0407 CHURCH ROAD
CONTRACT NO. 63303



EXISTING TYPICAL SECTION
CHURCH ROAD
STA 10+00 TO STA 34+00



PROPOSED TYPICAL SECTION
CHURCH ROAD
STA 10+00 TO STA 34+00

- EXISTING LEGEND**
- (A) HOT-MIX ASPHALT PAVEMENT, 4" (AVG.)
 - (B) AGGREGATE BASE COURSE, 12" (AVG.)
 - (C) AGGREGATE SHOULDERS, VARIABLE DEPTH

- PROPOSED LEGEND**
- (1) HOT-MIX ASPHALT SURFACE COURSE, MIX "C", N50 - 1 1/2"
 - (2) LEVELING BINDER (MACHINE METHOD), N50 - 3/4"
 - (3) CLASS D PATCHES, TYPE I - IV, 6-INCH
 - (4) AGGREGATE SHOULDERS, TYPE B, 2" (TO BE INSTALLED BY THE VILLAGE OF BEECHER)

HOT-MIX ASPHALT MIXTURE REQUIREMENTS

ITEM	AIR VOIDS @ Ndes
RESURFACING	
HOT-MIX ASPHALT SURFACE COURSE, MIX "C", N50 (IL 9.5 mm), 1 1/2"	4% @ 50 Gyr
LEVELING BINDER (MACHINE METHOD), N50 (IL 9.5 mm), 3/4"	4% @ 50 Gyr
PATCHING	
CLASS D PATCHES (HMA BINDER IL-19mm); TYPE I-IV - 6 INCH	4% @ 70 Gyr

1. THE UNIT WEIGHT USED TO CALCULATE ALL HOT-MIX ASPHALT SURFACE MIXTURE IS 112 LBS/SQ YD/IN.
2. THE "AC TYPE" FOR POLYMERIZED HMA MIXES SHALL BE "SBS/SBR PG 70-22 AND FOR NON-POLYMERIZED HMA THE "AC TYPE" SHALL BE "PG 64-22" UNLESS MODIFIED BY DISTRICT ONE SPECIAL PROVISIONS." FOR "PERCENT OF RAP" SEE DISTRICT ONE SPECIAL PROVISIONS.

NOTE: CONTRACTOR SHALL MILL BEFORE PATCHING.

COPYRIGHT © 2009 BY BAXTER & WOODMAN, INC.
 ALL RIGHTS RESERVED.
 LICENSE NO. 184-00021 - EXPIRES 4/30/2011
 4886000
 10/21/2009
 \\C:\p\ba\wood.com\p\object\makemod\BEECH\090280-Church.Ro\CADD-SURVEY\DRAWINGS\VDNS\090280-TYP.aht
 10/21/2009 10:12:21 AM



USER NAME = 488600	DESIGNED - JGH	REVISED - PER IDOT 10-6-09
FILE NAME = 090280-TYP.aht	DRAWN - BCD	REVISED -
PLOT DATE = 10/21/2009	CHECKED - NJP	REVISED -
	DATE - 07-10-09	REVISED -

VILLAGE OF BEECHER, ILLINOIS
FAU 0407 CHURCH ROAD
LAPP IMPROVEMENTS

SCALE: NONE

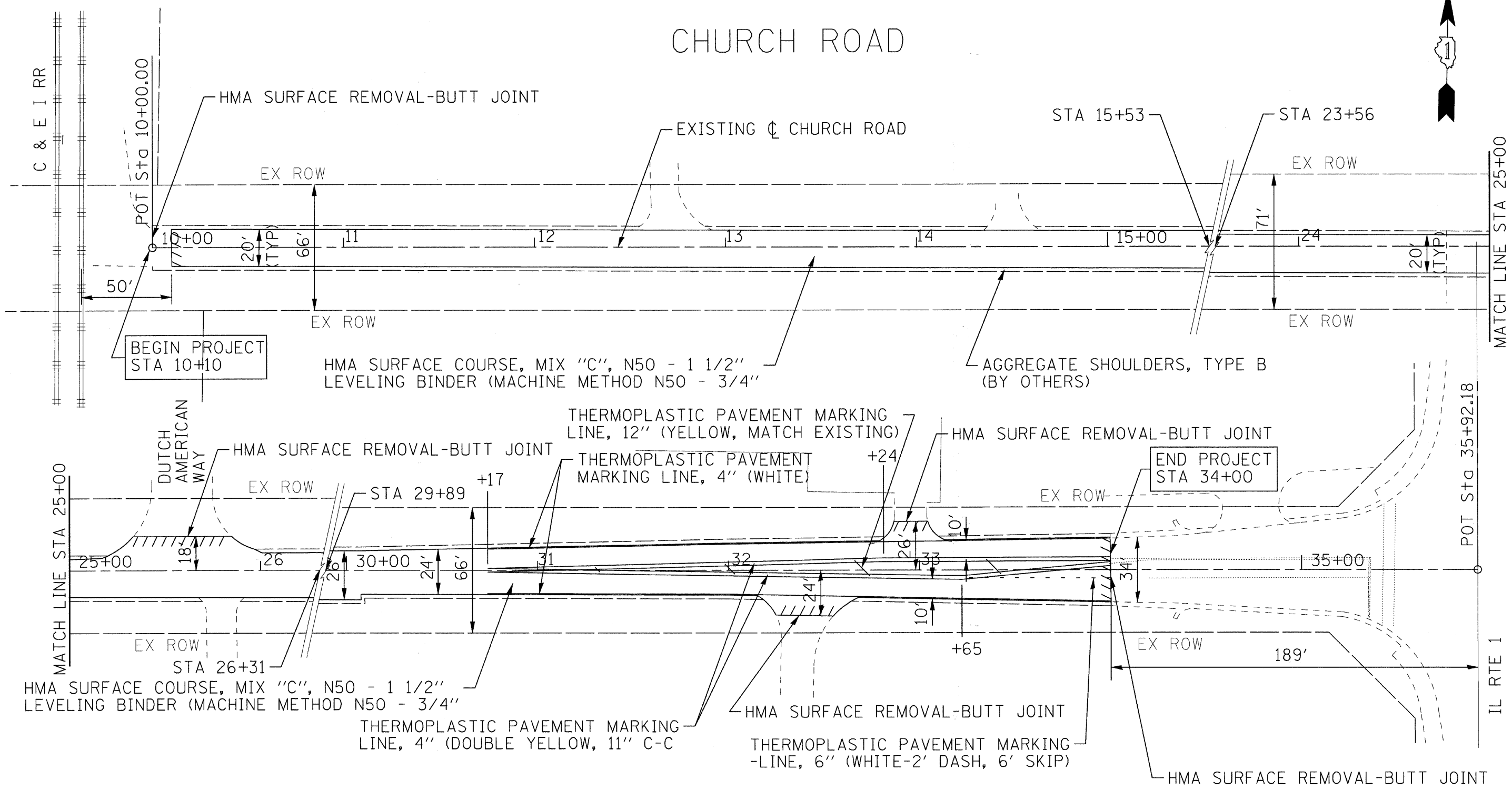
STA. TO STA.

TYPICAL SECTIONS AND
HMA MIXTURE REQUIREMENTS

F.A. RTE.	SECTION	COUNTY	TOTAL SHEETS	SHEET NO.
* 09-00017-00-RS		WILL	9	4
FED. ROAD DIST. NO.	ILLINOIS	CONTRACT NO. 63303		
		FED. AID PROJECT		



CHURCH ROAD



BEGIN PROJECT
STA 10+10

END PROJECT
STA 34+00

HMA SURFACE COURSE, MIX "C", N50 - 1 1/2"
LEVELING BINDER (MACHINE METHOD N50 - 3/4")

AGGREGATE SHOULDERS, TYPE B
(BY OTHERS)

THERMOPLASTIC PAVEMENT MARKING
LINE, 12" (YELLOW, MATCH EXISTING)

THERMOPLASTIC PAVEMENT
MARKING LINE, 4" (WHITE)

HMA SURFACE COURSE, MIX "C", N50 - 1 1/2"
LEVELING BINDER (MACHINE METHOD N50 - 3/4")

THERMOPLASTIC PAVEMENT MARKING
LINE, 4" (DOUBLE YELLOW, 11" C-C

THERMOPLASTIC PAVEMENT MARKING
-LINE, 6" (WHITE-2' DASH, 6' SKIP)

CHURCH ROAD

COPYRIGHT © 2009 BY BAXTER & WOODMAN, INC.
 STATE OF ILLINOIS - PROFESSIONAL DESIGN FIRM
 LICENSE NO. - 184-00121 - EXPIRES 4/30/2011
 10/21/2009 10:46:23 AM
 ...:\CADD-SURVEY-PLOTS\B&W\FBI
 \Corp\B&W\woodr.com\Projects\Mokenc\BEECH\090280-Church Rd\CADD-SURVEY\DRAWINGS\DGNS\090280-Plan.sht



Baxter & Woodman
 Crystal Lake, Illinois 815.429.1288
 Burlington, Wisconsin 262.762.2534
 Mokena, Illinois 708.478.2090
 DeKalb, Illinois 815.797.3111
 Grayslake, Illinois 847.225.5088
 Chicago, Illinois 312.578.0059
 Plainfield, Illinois 815.608.7425

USER NAME = 488ccc
 FILE NAME = 090280-Plan.sht
 PLOT DATE = 10/21/2009

DESIGNED - JGH	REVISED - PER IDOT 10-6-09
DRAWN - BCD	REVISED -
CHECKED - NJP	REVISED -
DATE - 6-30-09	REVISED -

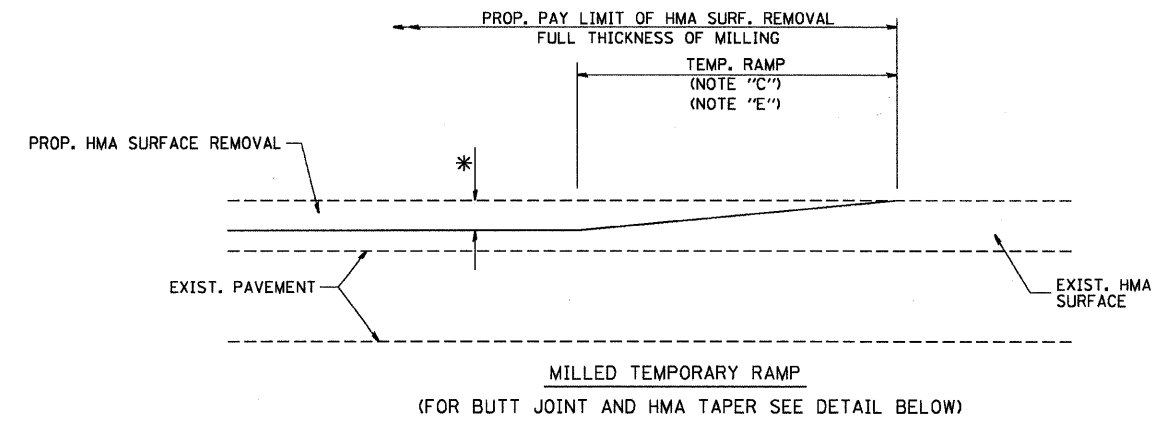
VILLAGE OF BEECHER, ILLINOIS
FAU ROUTE 0407 CHURCH ROAD
LAPP IMPROVEMENTS

RESURFACING AND PAVEMENT MARKING PLAN
 SCALE: 1"=50'
 STA. TO STA.

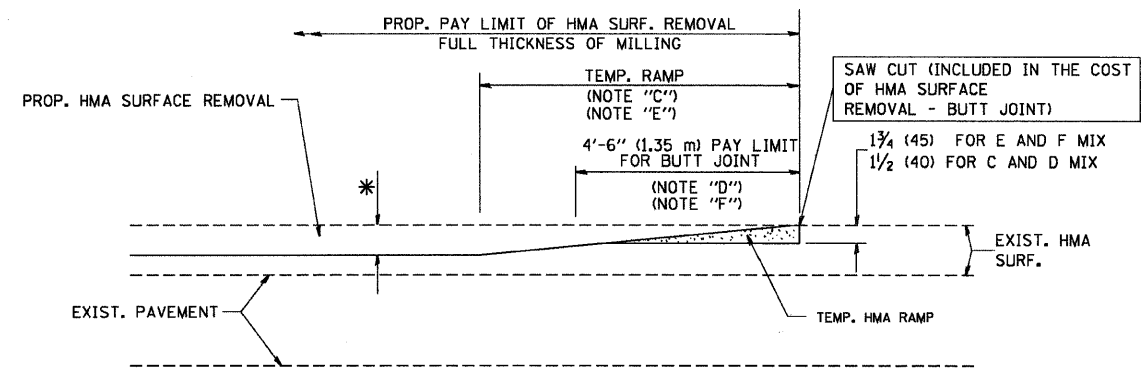
F.A. RTE.	SECTION	COUNTY	TOTAL SHEETS	SHEET NO.
•	09-00017-00-RS	WILL	9	5
FED. ROAD DIST. NO.	ILLINOIS		CONTRACT NO. 63303	
	FED. AID PROJECT			

F.A.U. RTE.	SECTION	COUNTY	TOTAL SHEETS	SHEET NO.
*	09-00017-00-RS	WILL	9	6
STA.		TO STA.		
FED. ROAD DIST. NO	ILLINOIS	FED AID PROJECT		

*FAU 0407 CHURCH ROAD
CONTRACT NO. 63303

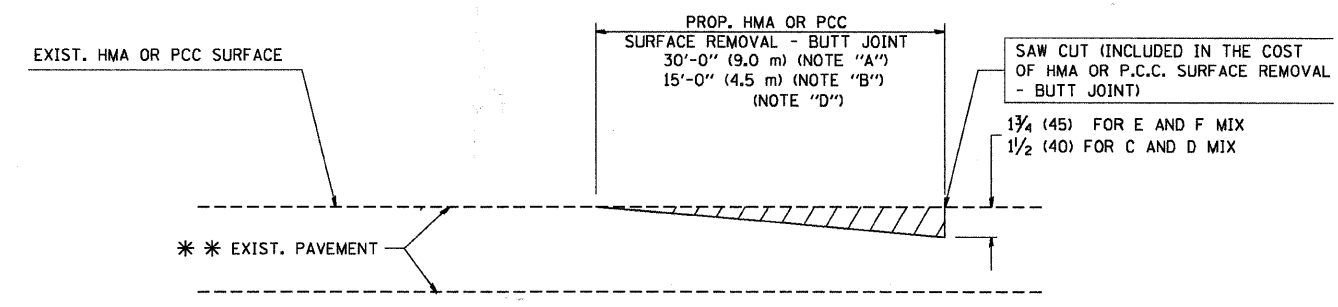


OPTION 1

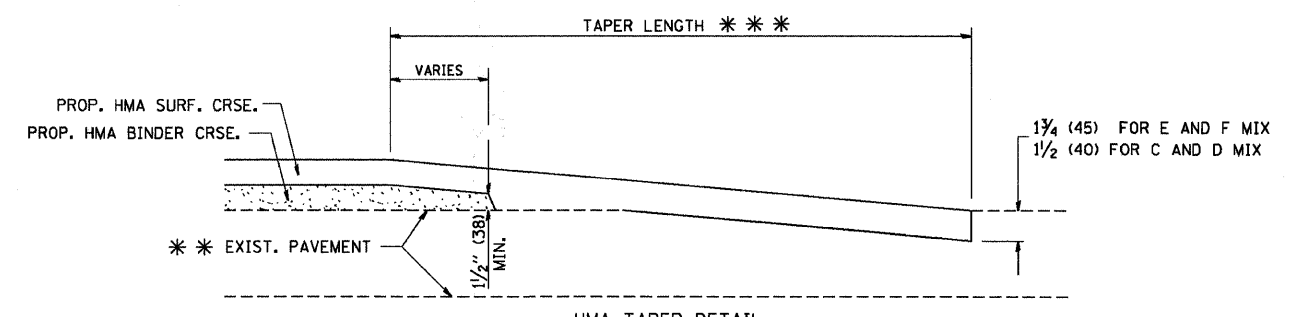


OPTION 2

TYPICAL TEMPORARY RAMP



BUTT JOINT DETAIL



HMA TAPER DETAIL

TYPICAL BUTT JOINT AND HMA TAPER FOR RESURFACING ONLY

*** PC CONCRETE, HMA OR HMA RESURFACED PAVEMENT.

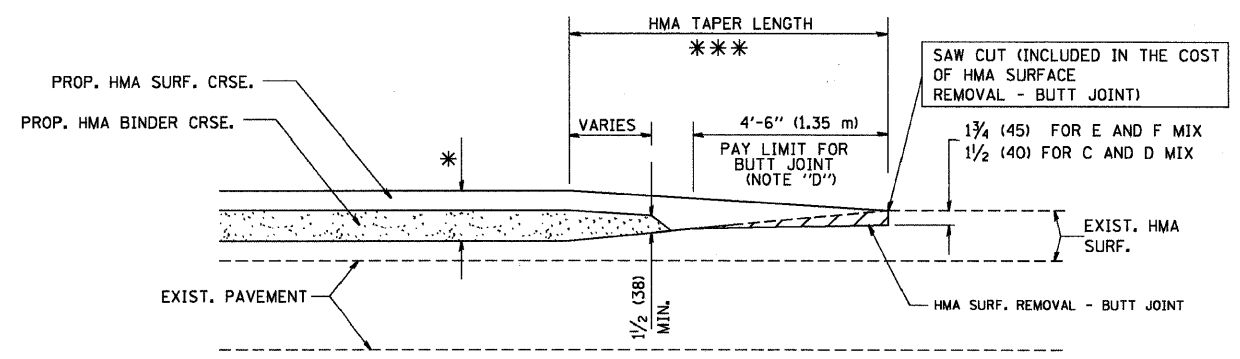
NOTES

- A: MAINLINE ROADWAYS AND MAJOR SIDE ROADS.
 - B: MINOR SIDE ROADS.
 - C: THE TEMP. RAMP SHALL BE CONSTRUCTED IMMEDIATELY UPON REMOVAL OF THE EXISTING HMA SURFACE.
 - D: THE BUTT JOINT SHALL BE CONSTRUCTED IMMEDIATELY PRIOR TO PLACING THE PROPOSED HMA COURSES.
 - E: TAPER THE TEMP. RAMP AT A RATE OF 3'-0" (900 mm) PER 1 INCH (25 mm) OF MILLING THICKNESS.
 - F: INSTALLATION AND REMOVAL OF THE 4'-6" (1.35 m) TEMP. RAMP IS INCLUDED IN COST OF HMA SURFACE REMOVAL - BUTT JOINT
 - G: SEE ARTICLE 406.08 AND 406.14 OF THE STANDARD SPECIFICATIONS FOR "HMA AND/OR PCC SURFACE REMOVAL, BUTT JOINT".
- * SEE TYPICAL SECTIONS FOR MILLING THICKNESS.
- *** 20'-0" (6.1 m) PER 1 (25) RESURFACING (NOTE "A")
10'-0" (3.0 m) PER 1 (25) RESURFACING (NOTE "B")

BASIS OF PAYMENT:

THE BUTT JOINT WILL BE PAID FOR AT THE CONTRACT UNIT PRICE PER SQUARE YARD (SQUARE METER) FOR "HOT-MIX ASPHALT SURFACE REMOVAL - BUTT JOINT" OR FOR "PORTLAND CEMENT CONCRETE SURFACE REMOVAL - BUTT JOINT".

ALL DIMENSIONS ARE IN INCHES (MILLIMETERS) UNLESS OTHERWISE SHOWN.



BUTT JOINT AND HMA TAPER

TYPICAL BUTT JOINT AND HMA TAPER FOR MILLING AND RESURFACING

FILE NAME = W:\d1\stsd\22x34\bd32.dgn	USER NAME = goglieno	DESIGNED - M. DE YONG	REVISED - R. SHAH 10-25-94
		DRAWN -	REVISED - A. ABBAS 03-21-97
		CHECKED -	REVISED - M. GOMEZ 04-06-01
		DATE - 06-13-90	REVISED - R. BORO 01-01-07

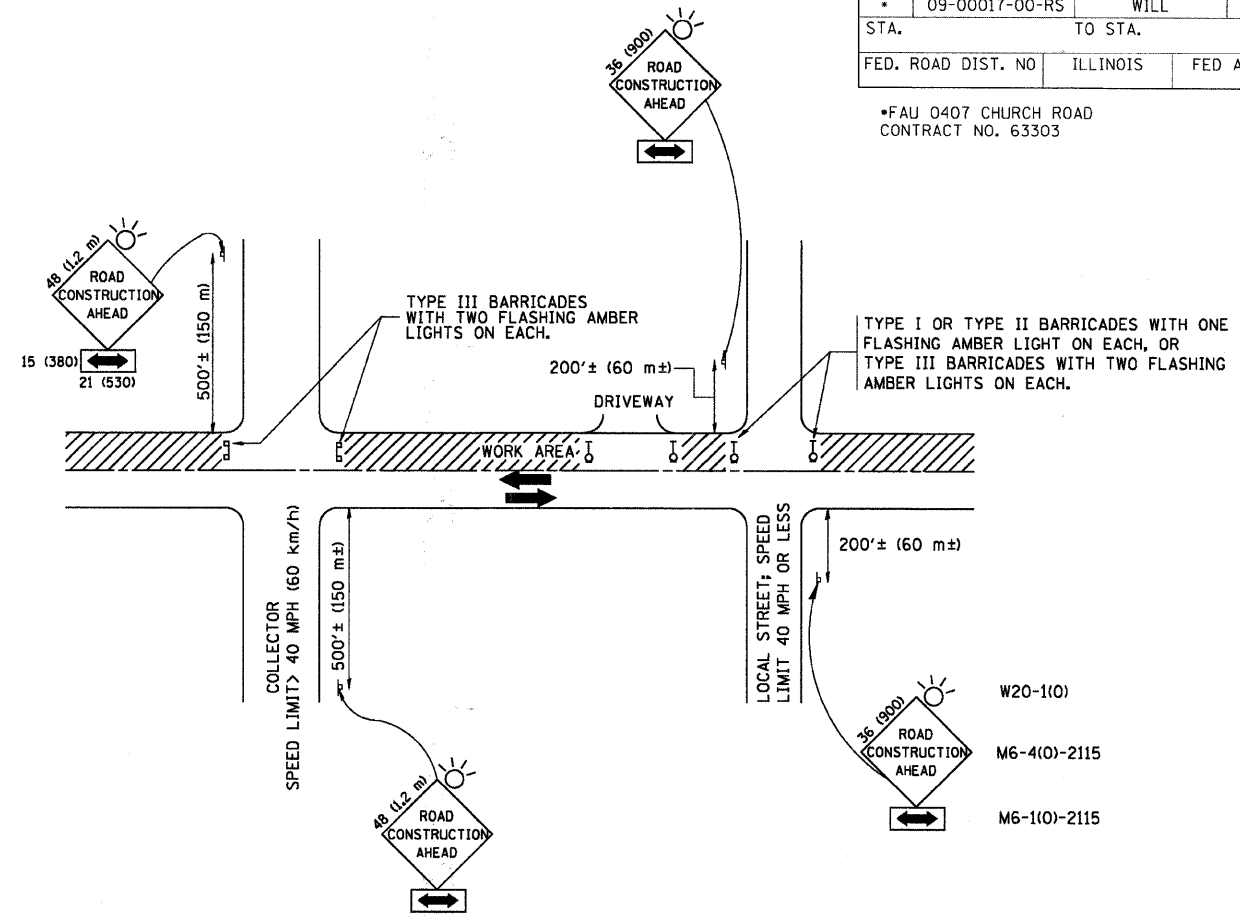
**STATE OF ILLINOIS
DEPARTMENT OF TRANSPORTATION**

BUTT JOINT AND HMA TAPER DETAILS	
SCALE: NONE	SHEET NO. 1 OF 1 SHEETS
STA.	TO STA.

F.A.U. RTE.	SECTION	COUNTY	TOTAL SHEETS	SHEET NO.
*	09-00017-00-RS	WILL	9	6
BD400-05 BD32		CONTRACT NO. 63303		
FED. ROAD DIST. NO. 1 [ILLINOIS] FED. AID PROJECT				

F.A.U. RTE.	SECTION	COUNTY	TOTAL SHEETS	SHEET NO.
* 09-00017-00-RS	WILL	ILLINOIS	9	7
STA.		TO STA.		
FED. ROAD DIST. NO	ILLINOIS	FED AID PROJECT		

*FAU 0407 CHURCH ROAD
CONTRACT NO. 63303



TRAFFIC CONTROL AND PROTECTION FOR SIDE ROADS, INTERSECTIONS, AND DRIVEWAYS

NOTES:

- A. FOR NO LANE RESTRICTION ON THE SIDE ROAD OR DRIVEWAYS**
- SIDE ROAD WITH A SPEED LIMIT OF 40 MPH (60 km/h) OR LESS AS SHOWN ON THE DRAWING AND AS DIRECTED BY THE ENGINEER:
 - ONE ROAD CONSTRUCTION AHEAD SIGN 36 x 36 (900x900) WITH A FLASHER AND FLAG MOUNTED ON IT APPROXIMATELY 200' (60 m) IN ADVANCE OF THE MAIN ROUTE.
 - THE CLOSED PORTION OF THE MAIN ROUTE SHALL BE PROTECTED BY BLOCKING WITH TYPE I, TYPE II OR TYPE III BARRICADES, 1/3 OF THE CROSS SECTION OF THE CLOSED PORTION.
 - SIDE ROAD WITH A SPEED LIMIT GREATER THAN 40 MPH (60 km/h) AS SHOWN ON THE DRAWING AND AS DIRECTED BY THE ENGINEER:
 - ONE ROAD CONSTRUCTION AHEAD SIGN 48 x 48 (1.2 m x 1.2 m) WITH A FLASHER MOUNTED ON IT APPROXIMATELY 500' (150 m) IN ADVANCE OF THE MAIN ROUTE.
 - THE CLOSED PORTION OF THE MAIN ROUTE SHALL BE PROTECTED BY BLOCKING WITH TYPE III BARRICADES, 1/2 OF THE CROSS SECTION OF THE CLOSED PORTION.
 - WHEN THE SIDE ROAD LIES BETWEEN THE BEGINNING OF THE MAINLINE SIGNING AND THE WORK ZONE, A SINGLE HEADED ARROW (M6-1) SHALL BE USED IN LIEU OF THE DOUBLE HEADED ARROW (M6-4).
- B. FOR A LANE CLOSURE ON A SIDE ROAD OR DRIVEWAY:**
- USE APPLICABLE PORTIONS OF THE TYPICAL APPLICATION OF TRAFFIC CONTROL DEVICES (STD. 701501, STD. 701606 OR THE APPROPRIATE STANDARD). THE SPACING OF SIGNS AND BARRICADES SHALL BE ADJUSTED FOR FIELD CONDITIONS AS DIRECTED BY THE ENGINEER. THE DIRECTIONAL ARROW SHALL BE COVERED OR REMOVED WHEN NO LONGER CONSISTENT WITH THE SIDE ROAD LANE CLOSURE.
- C. ADVANCE WARNING SIGNS ARE TO BE OMITTED ON DRIVEWAY UNLESS OTHERWISE NOTED.**
- D. THE TRAFFIC CONTROL AND PROTECTION FOR SIDE ROADS, INTERSECTIONS, AND DRIVEWAYS SHALL BE INCIDENTAL TO THE COST OF SPECIFIED TRAFFIC CONTROL STANDARDS OR ITEMS.**

All dimensions are in millimeters (inches) unless otherwise shown.

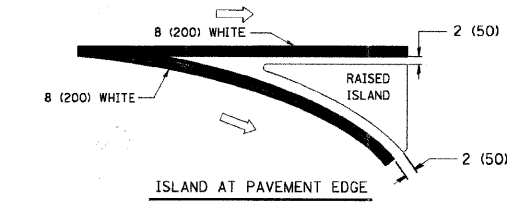
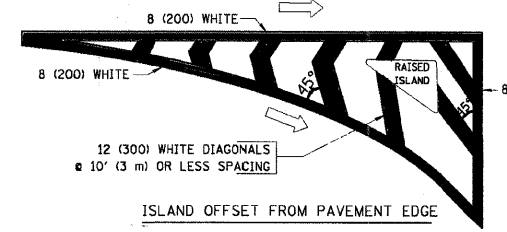
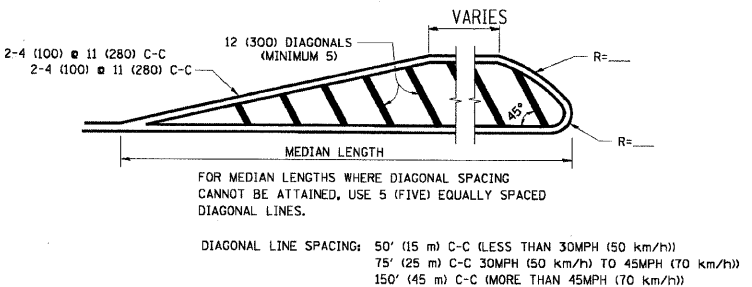
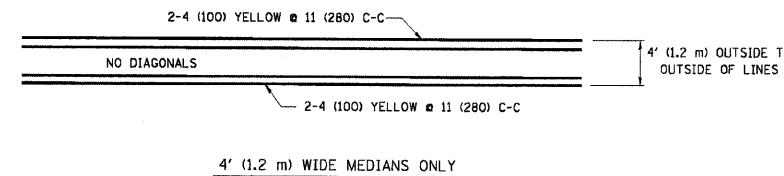
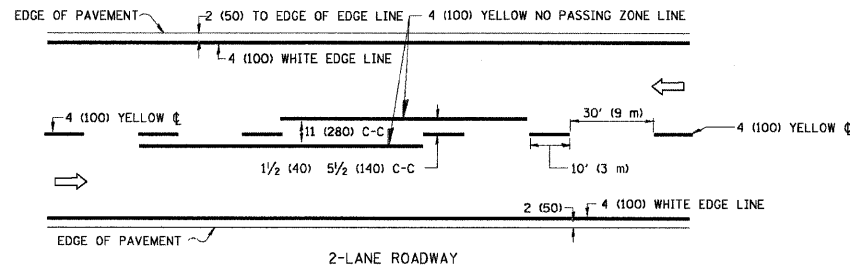
FILE NAME =	USER NAME = gegljanobt	DESIGNED - LHA	REVISED - J. OBERLE 10-18-95
W:\distatd\22x34\1010.dgn		DRAWN -	REVISED - A. HOUSEH 03-06-96
	PLOT SCALE = 50.000 / IN.	CHECKED -	REVISED - A. HOUSEH 10-15-96
	PLOT DATE = 1/4/2008	DATE - 06-89	REVISED - T. RAMMACHER 01-06-00

STATE OF ILLINOIS
DEPARTMENT OF TRANSPORTATION

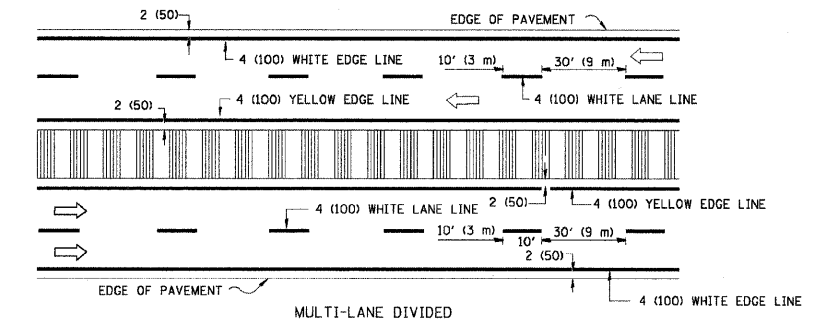
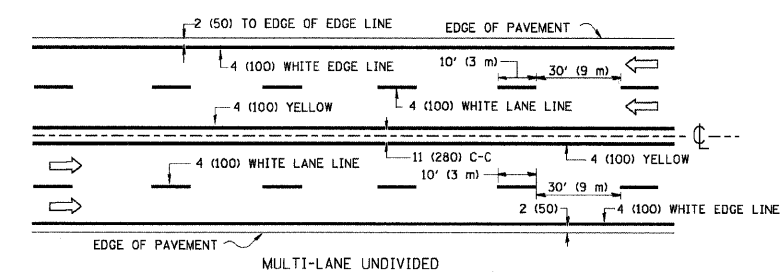
TRAFFIC CONTROL AND PROTECTION FOR SIDE ROADS, INTERSECTIONS, AND DRIVEWAYS			
SCALE: NONE	SHEET NO. 1 OF 1 SHEETS	STA.	TO STA.

F.A.U. RTE.	SECTION	COUNTY	TOTAL SHEETS	SHEET NO.
* 09-00017-00-RS	WILL	ILLINOIS	9	7
TC-10		CONTRACT NO.		
FED. ROAD DIST. NO. 1 ILLINOIS FED. AID PROJECT				

F.A.U. RTE.	SECTION	COUNTY	TOTAL SHEETS	SHEET NO.
09-00017-00-RS	WILL	9	8	
STA.	TO STA.			
FED. ROAD DIST. NO.	ILLINOIS	FED AID PROJECT		

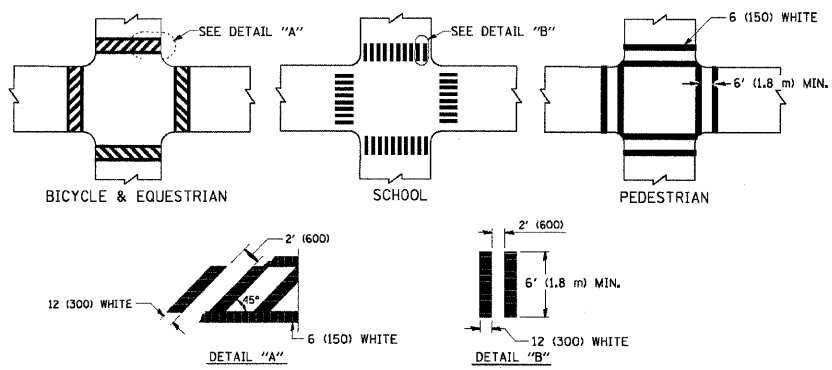


TYPICAL ISLAND MARKING

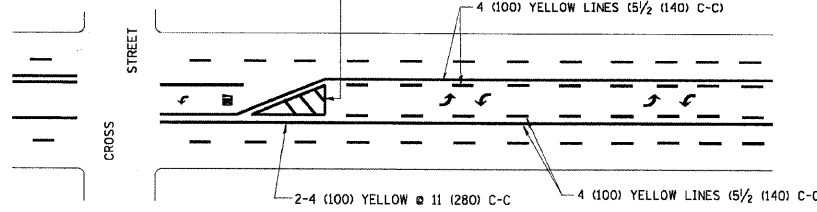


NOTE: MEDIANS WITH BARRIER CURB DO NOT REQUIRE AN EDGE LINE

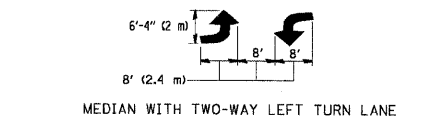
TYPICAL LANE AND EDGE LINE MARKING



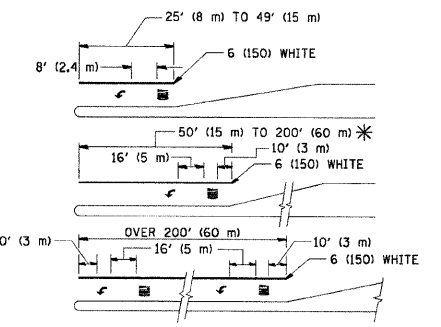
TYPICAL CROSSWALK MARKING



TYPICAL PAINTED MEDIAN MARKING



TYPICAL PAINTED MEDIAN MARKING



TYPICAL LEFT (OR RIGHT) TURN LANE

TYPE OF MARKING	WIDTH OF LINE	PATTERN	COLOR	SPACING / REMARKS
CENTERLINE ON 2 LANE PAVEMENT	4 (100)	SKIP-DASH	YELLOW	10' (3 m) LINE WITH 30' (9 m) SPACE
CENTERLINE ON MULTI-LANE UNDIVIDED PAVEMENT	2 @ 4 (100)	SOLID	YELLOW	11 (280) C-C
NO PASSING ZONE LINES: FOR ONE DIRECTION FOR BOTH DIRECTIONS	4 (100) 2 @ 4 (100)	SOLID SOLID	YELLOW YELLOW	5/2 (140) C-C FROM SKIP-DASH CENTERLINE OMIT SKIP-DASH CENTERLINE BETWEEN
LANE LINES	4 (100) 5 (125) ON FREEWAYS	SKIP-DASH SKIP-DASH	WHITE WHITE	10' (3 m) LINE WITH 30' (9 m) SPACE
DOTTED LINES (EXTENSIONS OF CENTER, LANE OR TURN LANE MARKINGS)	SAME AS LINE BEING EXTENDED	SKIP-DASH	SAME AS LINE BEING EXTENDED	2' (600) LINE WITH 6' (1.8 m) SPACE
EDGE LINES	4 (100)	SOLID	YELLOW-LEFT WHITE-RIGHT	OUTLINE MOUNTABLE MEDIANS IN YELLOW; EDGE LINES ARE NOT USED NEXT TO BARRIER CURB
TURN LANE MARKINGS	6 (150) LINE; FULL SIZE LETTERS & SYMBOLS (8' (2.4m))	SOLID	WHITE	SEE TYPICAL TURN LANE MARKING DETAIL
TWO WAY LEFT TURN MARKING	2 @ 4 (100) EACH DIRECTION 8' (2.4m) LEFT ARROW	SKIP-DASH AND SOLID IN PAIRS	YELLOW WHITE	10' (3 m) LINE WITH 30' (9 m) SPACE FOR SKIP-DASH; 5/2 (140) C-C BETWEEN SOLID LINE AND SKIP-DASH LINE SEE TYPICAL TWO-WAY LEFT TURN MARKING DETAIL
CROSSWALK LINES (PEDESTRIAN) A. DIAGONALS (BIKE & EQUESTRIAN) B. LONGITUDINAL BARS (SCHOOL)	2 @ 6 (150) 12 (300) @ 45° 12 (300) @ 90°	SOLID SOLID SOLID	WHITE WHITE WHITE	NOT LESS THAN 6' (1.8 m) APART 2' (600) APART 2' (600) APART SEE TYPICAL CROSSWALK MARKING DETAILS.
STOP LINES	24 (600)	SOLID	WHITE	PLACE 4' (1.2 m) IN ADVANCE OF AND PARALLEL TO CROSSWALK, IF PRESENT. OTHERWISE, PLACE AT DESIRED STOPPING POINT. PARALLEL TO CROSSROAD CENTERLINE, WHERE POSSIBLE
PAINTED MEDIANS	2 @ 4 (100) WITH 12 (300) DIAGONALS @ 45° NO DIAGONALS USED FOR 4' (1.2 m) WIDE MEDIANS	SOLID	YELLOW; TWO WAY TRAFFIC WHITE; ONE WAY TRAFFIC	11 (280) C-C FOR THE DOUBLE LINE SEE TYPICAL PAINTED MEDIAN MARKING.
GORE MARKING AND CHANNELIZING LINES	8 (200) WITH 12 (300) DIAGONALS @ 45°	SOLID	WHITE	DIAGONALS: 15' (4.5 m) C-C (LESS THAN 30MPH (50 km/h)) 20' (6 m) C-C (30MPH (50 km/h) TO 45MPH (70 km/h)) 30' (9 m) C-C (OVER 45MPH (70 km/h))
RAILROAD CROSSING	24 (600) TRANSVERSE LINES; "RR" IS 6' (1.8 m) LETTERS; 16 (400) LINE FOR "X"	SOLID	WHITE	SEE STATE STANDARD 780001 AREA OF: "R"=3.6 SQ. FT. (0.33 m²) EACH "X"=54.0 SQ. FT. (5.0 m²)
SHOULDER DIAGONALS	12 (300) @ 45°	SOLID	WHITE - RIGHT YELLOW - LEFT	50' (15 m) C-C (LESS THAN 30MPH (50 km/h)) 75' (22.5 m) C-C (30 MPH (50 km/h) TO 45MPH (70 km/h)) 150' (45 m) C-C (OVER 45MPH (70 km/h))

FOR FURTHER DETAILS ON PAVEMENT MARKING REFER TO STANDARD SPECIFICATIONS FOR ROAD AND BRIDGE CONSTRUCTION AND STATE STANDARD 780001.

All dimensions are in inches (millimeters) unless otherwise shown.

FILE NAME =	USER NAME = drivakosgn	DESIGNED - EVERS	REVISED - T. RAMMACHER 10-27-94
01:\pw\work\p\d\dot\drivakosgn\d0108315\to3.dgn		DRAWN -	REVISED - C. JUCIUS 09-09-09
	PLOT SCALE = 50.0000 "/> <td>CHECKED -</td> <td>REVISED -</td>	CHECKED -	REVISED -
	PLOT DATE = 9/9/2009	DATE - 03-19-90	REVISED -

STATE OF ILLINOIS
DEPARTMENT OF TRANSPORTATION

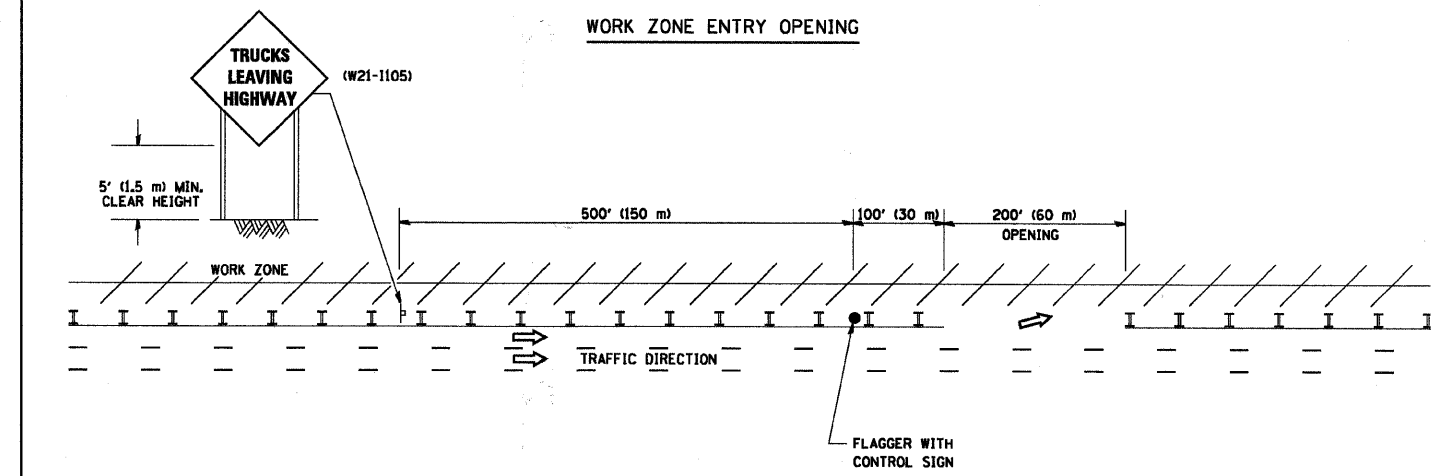
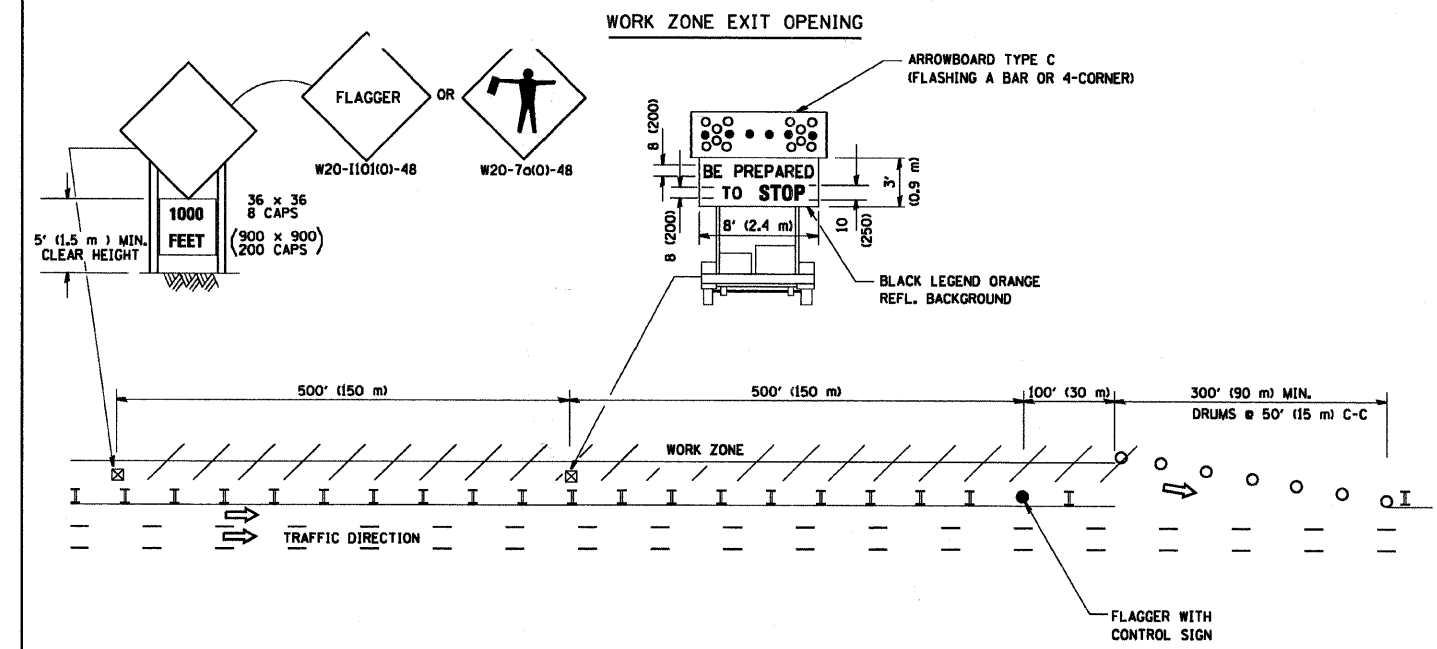
DISTRICT ONE			
TYPICAL PAVEMENT MARKINGS			
SCALE: NONE	SHEET NO. 1 OF 1 SHEETS	STA.	TO STA.

F.A. RTE.	SECTION	COUNTY	TOTAL SHEETS	SHEET NO.
09-00017-00-RS	WILL	9	8	
TC-13		CONTRACT NO. 63303		
FED. ROAD DIST. NO. 1	ILLINOIS	FED. AID PROJECT		

F.A.U. RTE.	SECTION	COUNTY	TOTAL SHEETS	SHEET NO.
* 09-00017-00-RS	WILL		9	9
STA.		TO STA.		
FED. ROAD DIST. NO	ILLINOIS	FED AID PROJECT ARA-9003(381)		

*FAU 0407 CHURCH ROAD
CONTRACT NO. 63303

SIGNING FOR FLAGGING OPERATIONS AT WORK ZONE OPENINGS



NOTES:

1. The Arrowboard, the Flagger Ahead trailer mounted sign, and the Trucks Leaving Highway sign shall be removed or turned away from traffic and the exit and entry openings shall be closed when the flagging operation ceases.
2. Work Zone Exit Openings should be a minimum of one half mile apart.
3. Exiting the work zone at any place other than at a Work Zone Exit Opening will be prohibited.
4. All vehicles shall enter the work zone at entry openings, using their turn signals to warn motorists

ALL DIMENSIONS ARE IN INCHES (MILLIMETERS)
UNLESS OTHERWISE SHOWN

COPYRIGHT © 2003 BY BAXTER & WOODMAN, INC.
 STATE OF ILLINOIS - PROFESSIONAL DESIGN FIRM
 No. 017-0712/2003
 506023
 W:\distatd\2201616
 WOODMAN
 Consulting Engineers

FILE NAME =	USER NAME =	DESIGNED -	REVISED -
W:\distatd\2201616	gaglianobt	D.W.S. 08-98	D.W.S. 08-98
		DRAWN -	REVISED -
		J.A.F. 04-03	J.A.F. 04-03
		CHECKED -	REVISED -
		J.A.F. 02-06	J.A.F. 02-06
		DATE -	REVISED -
		1/4/2008	S.P.B. 01-07

STATE OF ILLINOIS
DEPARTMENT OF TRANSPORTATION

SIGNING FOR FLAGGING OPERATIONS AT WORK ZONE OPENINGS			
SCALE: NONE	SHEET NO. 1 OF 1 SHEETS	STA.	TO STA.

F.A.U. RTE.	SECTION	COUNTY	TOTAL SHEETS	SHEET NO.
* 09-00017-00-RS	WILL		9	9
TC-18		CONTRACT NO. 63303		
FED. ROAD DIST. NO. 1 ILLINOIS FED. AID PROJECT				