

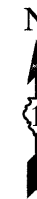
STATE OF ILLINOIS
DEPARTMENT OF TRANSPORTATION
DIVISION OF HIGHWAYS

PLANS FOR PROPOSED FEDERAL AID HIGHWAY

STREET RESURFACING
FAU 2927 (WOODLAWN AVENUE)
FAU 3778 (LINCOLN HIGHWAY) TO 8TH PLACE
LOCAL AGENCY PRESERVATION PROGRAM
SECTION NO.: 09-00012-00-RS
PROJECT NO.: ARA-9003 (429)
JOB NO. C-91-864-09
VILLAGE of FORD HEIGHTS

COOK COUNTY
RANGE R E

PROJECT ENDS
WOODLAWN AVENUE
STA 46+72



| P. A. U. I. D. NO. | SECTION | COUNTY | TOTAL SHEETS | SHEET NO. |
|-----------------------|----------------|---------------------------------|--------------|-----------|
| 2927 | 09-00012-00-RS | COOK | 13 | 1 |
| STA. 10+48 | | TO STA. 46+72 | | |
| FED. ROAD DIST. NO. 1 | ILLINOIS | FED. AID PROJECT ARA-9003 (429) | | |

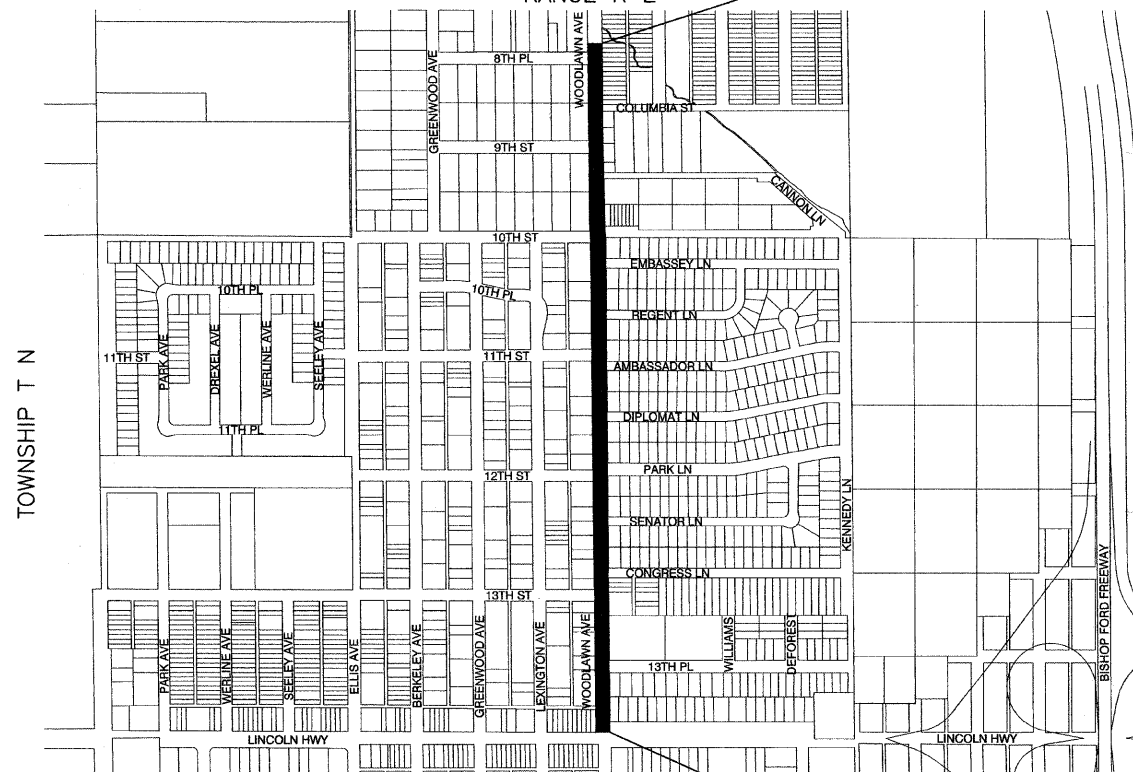
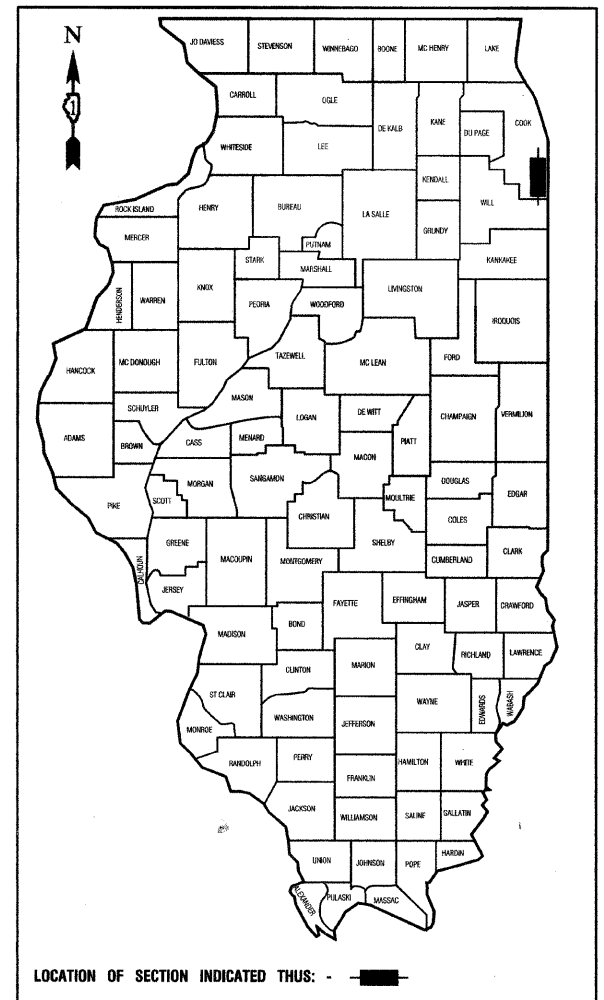
CONTRACT #63305

INDEX OF SHEETS

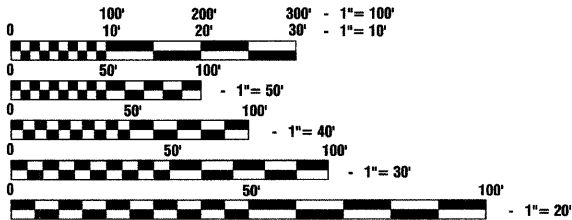
1. COVER SHEET
2. SUMMARY OF QUANTITIES AND GENERAL NOTES
3. TYPICAL CROSS SECTIONS
- 4.-5. PAVEMENT PLANS
- 6.-7. PAVEMENT MARKING PLANS
- 8.-13. IDOT DISTRICT 1 STANDARD DETAILS

STATE STANDARDS

- 000001-05 STANDARD SYMBOLS, ABBREVIATIONS AND PATTERNS
- 424001-05 CURB RAMPS FOR SIDEWALKS
- 442201-03 CLASS C AND D PATCHES
- 602001-01 CATCH BASIN, TYPE A
- 606001-04 CONCRETE CURB TYPE B AND COMBINATION CONCRETE CURB AND GUTTER
- 701606-06 URBAN LANE CLOSURE, MULTILANE, 2W WITH MOUNTABLE MEDIAN
- 701701-06 URBAN LANE CLOSURE, MULTILANE INTERSECTION
- 701801-04 LANE CLOSURE, MULTILANE 1W OR 2W CROSSWALK OR SIDEWALK CLOSURE
- 701901-01 TRAFFIC CONTROL DEVICES
- 780001-02 TYPICAL PAVEMENT MARKINGS
- 781001-03 TYPICAL APPLICATIONS RAISED REFLECTIVE PAVEMENT MARKERS
- 886001-01 DETECTOR LOOP INSTALLATIONS
- 886006-01 TYPICAL LAYOUT FOR DETECTION LOOPS



SCALES
 PLAN - 1"=50'
 PROFILE HORIZ. - 1"=50'
 PROFILE VERT. - 1"=5'
 CROSS SECTIONS - 1"=10'



FULL SIZE PLANS HAVE BEEN PREPARED USING STANDARD ENGINEERING SCALES, REDUCED SIZED PLANS WILL NOT CONFORM TO STANDARD SCALES, IN MAKING MEASUREMENTS ON REDUCED PLANS, THE ABOVE SCALES MAY BE USED.

J. U. L. I. E.
 JOINT UTILITY LOCATION INFORMATION FOR EXCAVATION
 1 - 800 - 892 - 0123 or 811

— INDICATES PROPOSED IMPROVEMENT

PROJECT BEGINS
WOODLAWN AVENUE
STA 10+48

LOCATION MAP

GROSS LENGTH= 3,624 FEET= 0.69
 NET LENGTH= 3,624 FEET= 0.69

WOODLAWN AVENUE ARTERIAL
 ADT= 5,700 (2009)
 = 5,700 (2030)

DESIGN SPEED= 35 MPH
 SPEED LIMIT = 35 MPH

STATE OF ILLINOIS DEPARTMENT OF TRANSPORTATION
 DIVISION OF HIGHWAYS

Approved October 9, 2009

 Charles Stapp
 President, Village of Ford Heights

Passed October 26, 2009

 Charles Stapp
 District 1 Engineer of Local Roads & Streets

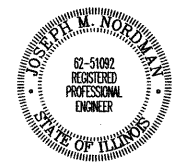
Released for Bid
 Based on Limited
 Review October 26, 2009

 Diane M. O'Keefe
 Deputy Director of Highways, Region 1 Engineer

PRINTED BY THE AUTHORITY OF
 THE STATE OF ILLINOIS

PREPARED BY OR UNDER THE
 DIRECT SUPERVISION OF:

10/5/09



LICENSE EXPIRES: 11/30/09

I.D.O.T. FIELD ENGINEER: MELCHOR MANGOBA 847-705-4408
 CONSULTANTS: ROBINSON ENGINEERING, LTD. 708-331-6700

CONTRACT NO. 63305