
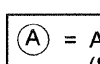
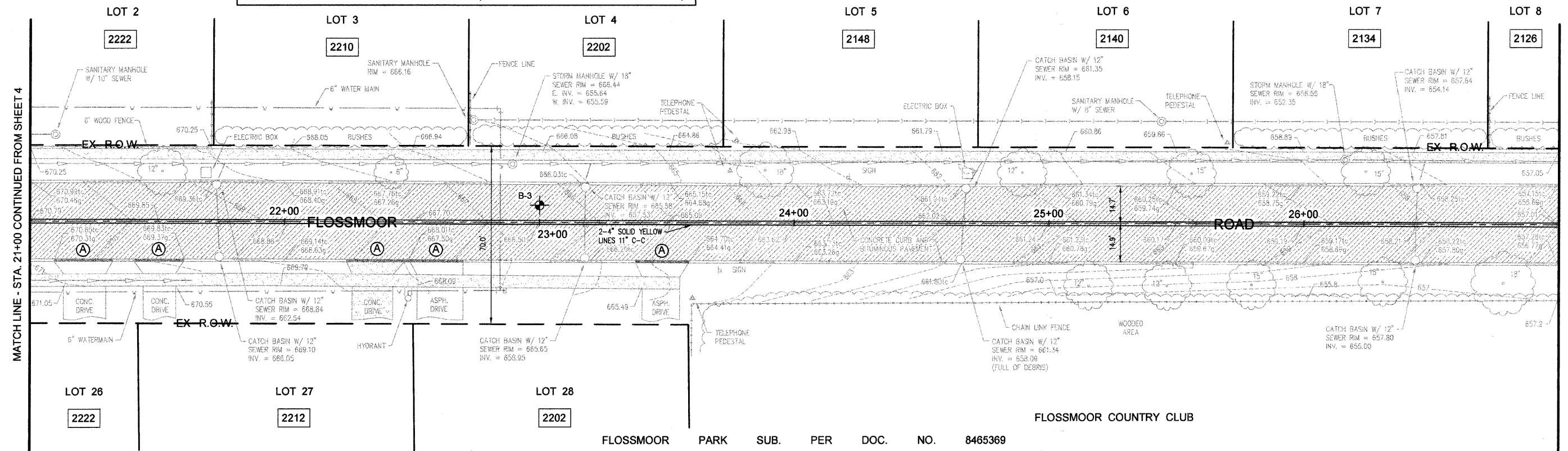


F.A.U. RTE.	SECTION	COUNTY	TOTAL SHEETS	SHEET NO.
1625	09-00046-00-RS	COOK	11	5
FED. ROAD DIST. NO. 1		ILLINOIS		CONTRACT NO. 63307

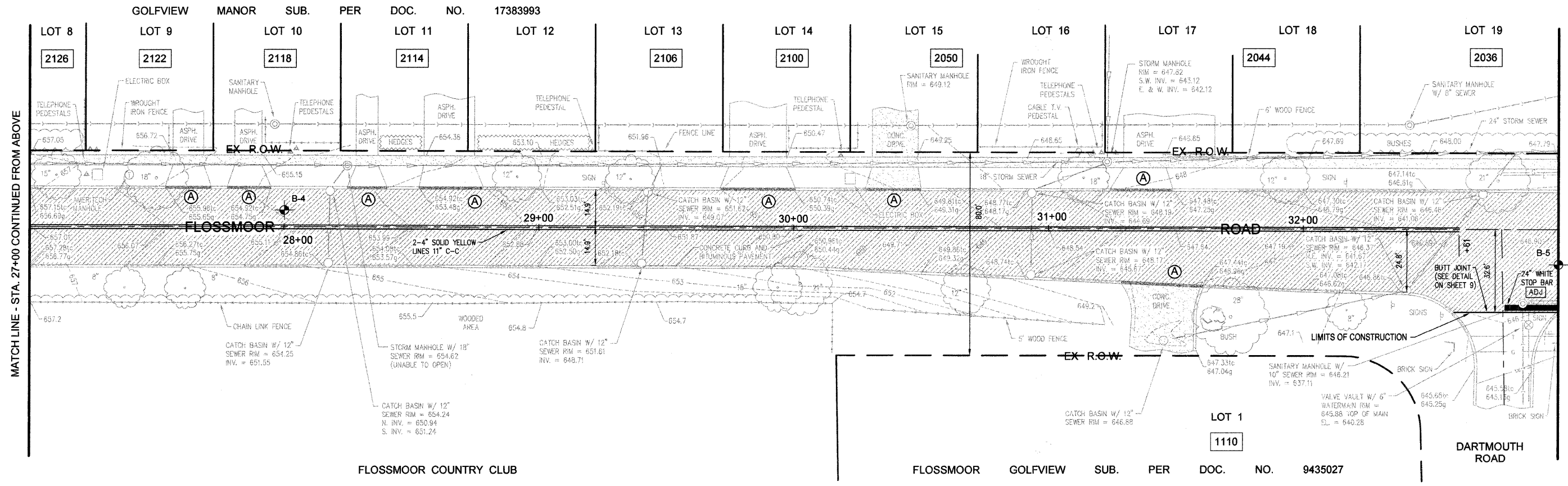
-  = EXISTING PAVEMENT TO RECEIVE:
- HOT-MIX ASPHALT SURFACE REMOVAL, 3"
 - HOT-MIX ASPHALT SURFACE COURSE, MIX "D", N70, 2"
 - POLYMERIZED LEVELING BINDER (MACHINE METHOD), IL-4.75, N50, 1"
 - BITUMINOUS MATERIALS (PRIME COAT) (0.15 GAL./S.Y.)
 - CLASS D PATCHES, TYPE II, 8" (TO BE DELINEATED IN FIELD BY ENGINEER)

 = AGGREGATE FOR TEMPORARY ACCESS (SEE DETAIL ON SHEET 9)

FLOSSMOOR PARK SUB. PER DOC. NO. 8465369



FLOSSMOOR PARK SUB. PER DOC. NO. 8465369



FLOSSMOOR GOLFVIEW SUB. PER DOC. NO. 9435027

ILLINOIS PROFESSIONAL DESIGN FIRM NO. 184-002235

TECH 3 Consulting Group, Inc.
 ENGINEERS SURVEYORS
 737 West Exchange St. Crete, IL 60417
 ph 708.672.4994 fax 708.672.3739



Village of Flossmoor
 Flossmoor, Illinois

DESIGNED BY: RWM				
DRAWN BY: EGH				
CHECKED BY: RWM				
REVISIONS				
NO.	DATE	BY	DESCRIPTION	
1	09/09/09	EGH	PER I.D.O.T. REVIEW	
2	10/12/09	EGH	PER I.D.O.T. REVIEW	

FLOSSMOOR ROAD RESURFACING
WESTERN AVENUE TO DIXIE HIGHWAY
ROAD PROFILE: STA. 21+00 TO 33+00

DATE: JUNE 24, 2009 SCALE: 1" = 20' JOB NO. 09709