

STATE OF ILLINOIS
DEPARTMENT OF TRANSPORTATION
DIVISION OF HIGHWAYS

PLANS FOR PROPOSED
FEDERAL AID HIGHWAY

MANHATTAN ROAD (FAP. 0532)
US ROUTE 52 TO 1000 FT. WEST OF US ROUTE 52
MANHATTAN ROAD SIDEWALK IMPROVEMENTS
PROJECT NO.: ARA-9003 (360)
SECTION NO.: 09-00009-00-SW
VILLAGE of MANHATTAN,
WILL COUNTY
C-91-675-09

F.A.P. ETC.	SECTION	COUNTY	TOTAL SHEETS	SHEET NO.
0532	09-00009-00-SW	WILL	13	1
STA.		TO STA.		
FED. ROAD DIST. NO.	ILLINOIS	FED. AID PROJECT	ARA-9003 (360)	

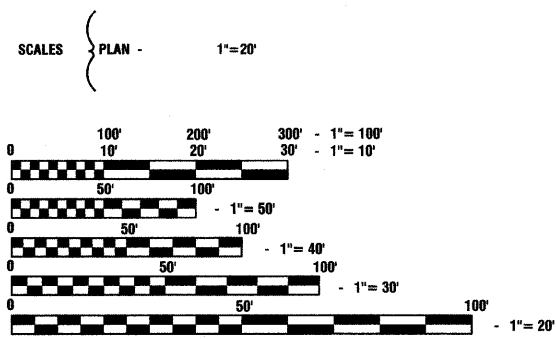
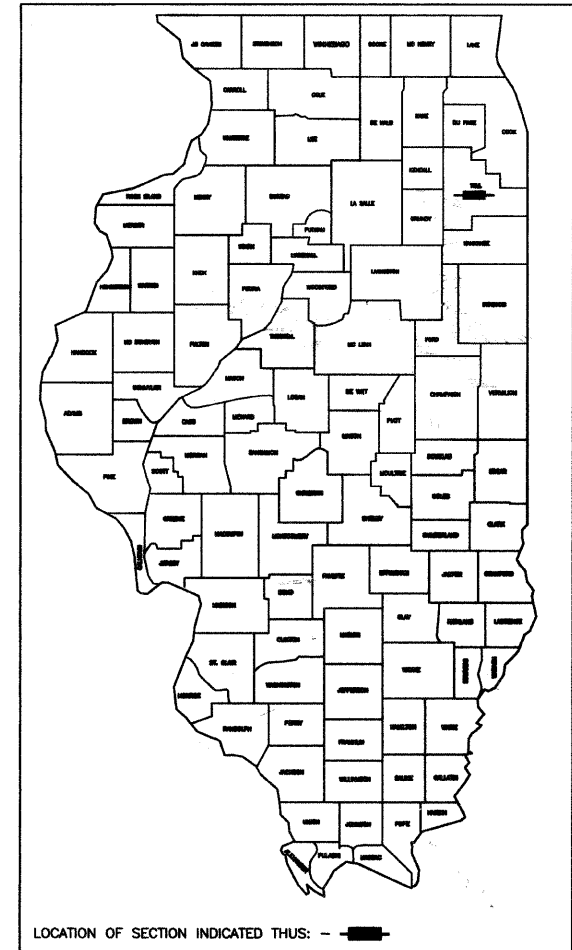
CONTRACT #63309

INDEX OF SHEETS

- COVER SHEET
- SUMMARY OF QUANTITIES
- GENERAL NOTES, AND TYPICAL CROSS SECTION
- GRADING AND UTILITY PLAN
- LANDSCAPING AND STRIPING PLAN
- TRAFFIC SIGNALS: TRAFFIC SIGNAL INSTALLATION
- TRAFFIC SIGNALS: CABLE PLAN
- 8.-13. DISTRICT ONE DETAILS

STATE STANDARDS

- 280001-05 TEMPORARY EROSION CONTROL SYSTEM
- 424001-05 CURB RAMPS FOR SIDEWALKS
- 542301-02 PRECAST REINFORCED CONCRETE FLARED END SECTION
- 602001-01 CATCH BASIN TYPE A
- 602011-01 CATCH BASIN TYPE C
- 602601-02 PRECAST REINFORCED CONCRETE FLAT SLAB TOP
- 604001-03 FRAME AND LID TYPE 1
- 604036-02 GRATE TYPE 8
- 606001-04 CONCRETE CURB TYPE B AND COMBINATION CONCRETE CURB AND GUTTER
- 701006-03 OFF-RD OPERATIONS, 2L, 2W, 15' (4.5m) TO 24" (600mm) FROM PAVEMENT EDGE
- 701201-03 LANE CLOSURE, 2L, 2W, DAY ONLY, FOR SPEEDS ≥ 45 MPH
- 701501-05 URBAN LANE CLOSURE, 2L, 2W, UNDIVIDED
- 701901-01 TRAFFIC CONTROL DEVICES
- 720001-01 SIGN PANEL MOUNTING DETAILS
- 780001-02 TYPICAL PAVEMENT MARKINGS
- 876001-01 PEDESTRIAN PUSH BUTTON POST
- 880006-01 TRAFFIC SIGNAL MOUNTING DETAILS



LOCATION MAP

— INDICATES PROPOSED IMPROVEMENT

GROSS LENGTH= 1000 FEET = 0.19 MILES
NET LENGTH= 1000 FEET = 0.19 MILES

MANHATTAN ROAD URBAN
ADT=3200 (2006)
SPEED LIMIT=35 MPH

STATE OF ILLINOIS
DEPARTMENT OF TRANSPORTATION
DIVISION OF HIGHWAYS

APPROVED October 29 2009
Neil A. Borge
PRESIDENT, VILLAGE OF MANHATTAN

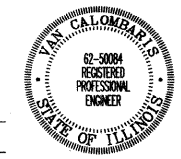
PASSED OCTOBER 30 2009
C. Hecht Christopher Hecht
REGION ONE ENGINEER OF LOCAL ROADS & STREETS

RELEASED FOR
BID BASED ON
LIMITED REVIEW OCTOBER 30 2009
Diana M. O'Keefe
DEPUTY DIRECTOR OF HIGHWAYS, REGION ONE ENGINEER

PRINTED BY THE AUTHORITY OF
THE STATE OF ILLINOIS

PREPARED BY OR UNDER THE
DIRECT SUPERVISION OF:

Van Calombaris
10/28/09



I.D.O.T. FIELD ENGINEER: MELCHOR MANGOBA (847-705-4408)
CONSULTANTS: ROBINSON ENGINEERING, LTD. 814-412-2014
CONTACT ENGINEER: VAN CALOMBARIS

FULL SIZE PLANS HAVE BEEN PREPARED USING STANDARD ENGINEERING SCALES, REDUCED SIZED PLANS WILL NOT CONFORM TO STANDARD SCALES, IN MAKING MEASUREMENTS ON REDUCED PLANS, THE ABOVE SCALES MAY BE USED.

J.U.L.I.E.
JOINT UTILITY LOCATION INFORMATION FOR EXCAVATION
1-800-892-0123

CONTRACT NO.63309

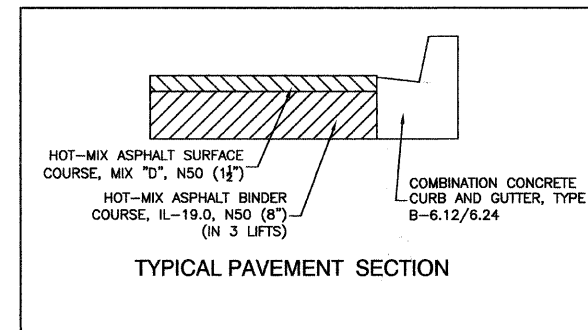
SUMMARY OF QUANTITIES					PAVEMENT	SIDEWALKS	TRAFFIC
S.I.	CODE NO.	PAY ITEM	UNIT	QUAN	CONSTRUCTION TYPE CODE		SIGNALS
					I000	SFTY-1B	Y031-1F
	20800150	TRENCH BACKFILL	CU YD	75	75		
	21101615	TOPSOIL FURNISH AND PLACE, 4"	SQ YD	800	800		
	21400100	GRADING AND SHAPING DITCHES	FOOT	460	460		
	25200650	SODDING, SALT TOLERANT (SPECIAL)	SQ YD	800	800		
	28000305	TEMPORARY DITCH CHECKS	EACH	40	40		
	28000510	INLET FILTERS	EACH	3	3		
	28100105	STONE RIPRAP, CLASS A3	SQ YD	3	3		
	35101400	AGGREGATE BASE COURSE, TYPE B	TON	105		105	
	40603080	HOT-MIX ASPHALT BINDER COURSE, IL-19.0, N50	TON	22	22		
	40603335	HOT-MIX ASPHALT SURFACE COURSE, MIX "D", N50	TON	4	4		
	42400430	PORTLAND CEMENT CONCRETE SIDEWALK 5 INCH, SPECIAL	SQ FT	3700		3700	
	42400800	DETECTABLE WARNINGS	SQ FT	80		80	
	44000100	PAVEMENT REMOVAL	SQ YD	115	115		
	44000500	COMBINATION CURB AND GUTTER REMOVAL	FOOT	94	94		
	44000600	SIDEWALK REMOVAL	SQ FT	160		160	
	44002300	CURB REMOVAL (PARTIAL)	FOOT	75	75		
	48102100	AGGREGATE WEDGE SHOULDER, TYPE B	TON	47	47		
	50105220	PIPE CULVERT REMOVAL	FOOT	20	20		
	54200215	PIPE CULVERTS, CLASS C, TYPE 1, 10"	FOOT	7	7		
	54213453	END SECTIONS 18"	EACH	3	3		
	550A0090	STORM SEWERS, CLASS A, TYPE 1 18"	FOOT	120	120		
	55100900	STORM SEWER REMOVAL 18"	FOOT	420	420		
	60207605	CATCH BASINS, TYPE C, TYPE B GRATE	EACH	1	1		
	60207000	CATCH BASINS, TYPE A, TYPE B GRATE	EACH	1	1		
	60250400	CATCH BASINS TO BE ADJUSTED WITH NEW TYPE 1 FRAME, OPEN LID	EACH	2	2		
	60255800	MANHOLES TO BE ADJUSTED WITH NEW TYPE 1 FRAME, CLOSED LID	EACH	1	1		
	60603800	COMBINATION CONCRETE CURB AND GUTTER, TYPE B-6.12	FOOT	40	40		
	60605000	COMBINATION CONCRETE CURB AND GUTTER, TYPE B-6.24	FOOT	69	69		
	67100100	MOBILIZATION	L SUM	1	1		
	70101800	TRAFFIC CONTROL AND PROTECTION, (SPECIAL)	L SUM	1	1		
*	78000400	THERMOPLASTIC PAVEMENT MARKING - LINE 6"	FOOT	454	454		
*	78000650	THERMOPLASTIC PAVEMENT MARKING - LINE 24"	FOOT	92	92		
	78300100	PAVEMENT MARKING REMOVAL	SQ FT	248	248		
*	81000700	CONDUIT IN TRENCH, 2 1/2" DIA., GALVANIZED STEEL	FOOT	8			8
*	81018600	CONDUIT PUSHED, 2 1/2" DIA., GALVANIZED STEEL	FOOT	24			24
*	85000200	MAINTENANCE OF EXISTING TRAFFIC SIGNAL INSTALLATION	EACH	1			1
*	87301215	ELECTRIC CABLE IN CONDUIT, SIGNAL NO. 14 2C	FOOT	448			448
*	87301225	ELECTRIC CABLE IN CONDUIT, SIGNAL NO. 14 3C	FOOT	640			640
*	87600100	PEDESTRIAN PUSH-BUTTON POST, TYPE I	EACH	2			2
*	87800100	CONCRETE FOUNDATION, TYPE A	FOOT	8			8
*	87900200	DRILL EXISTING HANDHOLE	EACH	2			2
*	88102717	PEDESTRIAN SIGNAL HEAD, LED, 1-FACE, BRACKET MOUNTED WITH COUNTDOWN TIMER	EACH	2			2
*	88102747	PEDESTRIAN SIGNAL HEAD, LED, 2-FACE, BRACKET MOUNTED WITH COUNTDOWN TIMER	EACH	1			1
*	88800100	PEDESTRIAN PUSH-BUTTON	EACH	3			3
*	89502200	MODIFY EXISTING CONTROLLER	EACH	1			1
	X0322256	TEMPORARY INFORMATION SIGNING	SQ FT	52	52		

* - INDICATES SPECIALTY ITEMS

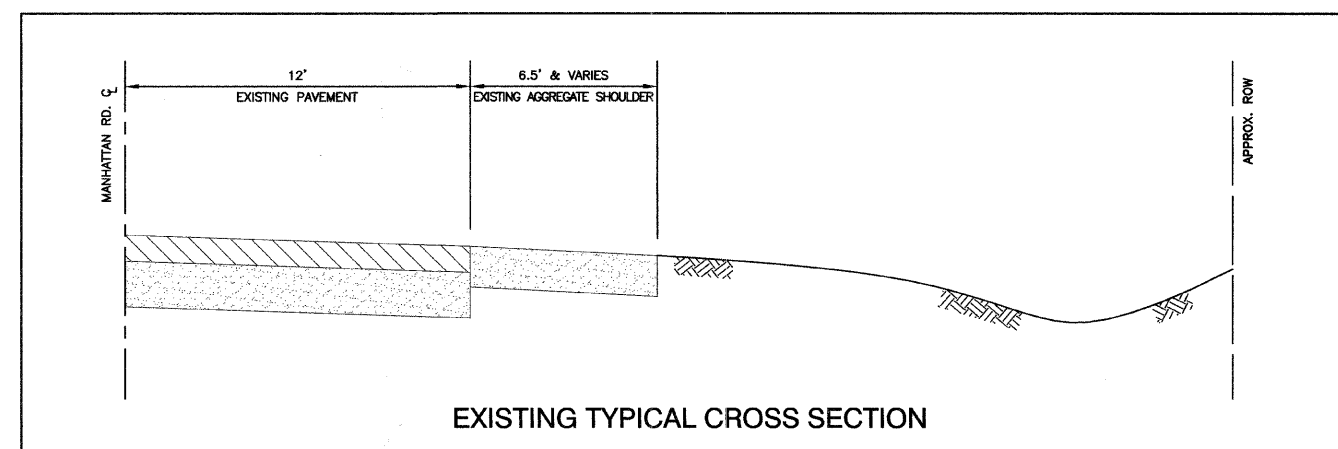
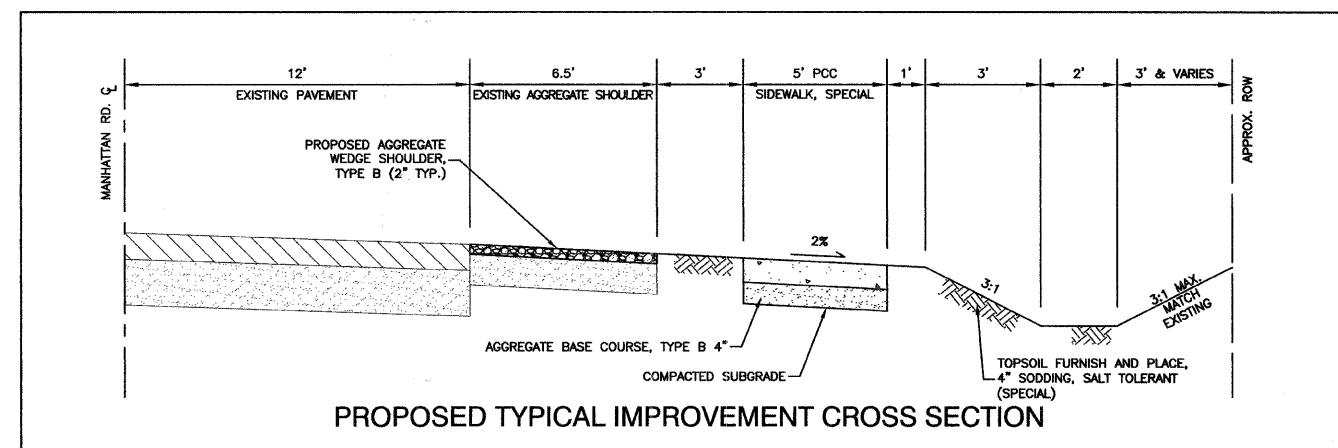
FILE NAME = 07434-QUAN-01	USER NAME =	DESIGNED -- V.C.	REVISED --	STATE OF ILLINOIS DEPARTMENT OF TRANSPORTATION	MANHATTAN ROAD SIDEWALK IMPROVEMENTS			F.A.P. RTE.	SECTION	COUNTY	TOTAL SHEETS	SHEET NO.
	PLOT SCALE = N/A	CHECKED -- V.C.	REVISED --		SUMMARY OF QUANTITIES, GENERAL NOTES AND CROSS SECTIONS			0532	09-00009-00-SW	WILL	13	2
	PLOT DATE = 07-30-09	DRAWN -- LTL	REVISED --		SCALE: N/A	SHEET NO. 2 OF 13 SHEETS	STA.	TO STA.	CONTRACT NO. 63309			
		CHECKED -- V.C./J.R.	REVISED --		FED. ROAD DIST. NO. 1 ILLINOIS FED. AID PROJECT ARA-9003 (360)							

GENERAL NOTES

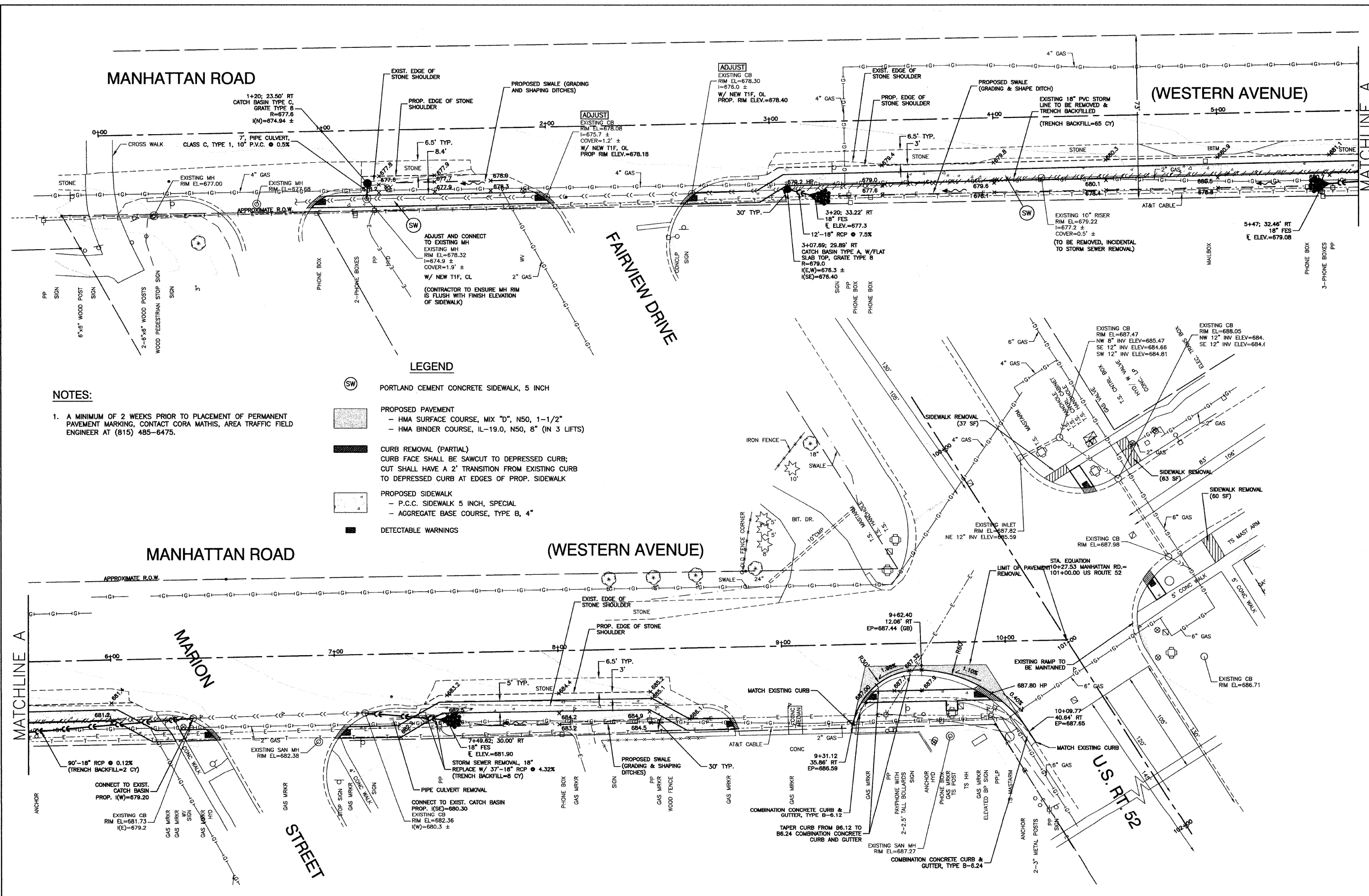
1. BEFORE STARTING ANY EXCAVATION, THE CONTRACTOR SHALL CALL J.U.L.I.E. AT (800) 892-0123 FOR FIELD LOCATIONS OF BURIED ELECTRIC, TELEPHONE AND GAS UTILITIES. (48 HOUR NOTIFICATION IS REQUIRED).
2. BOTH THE ROBINSON ENGINEERING, LTD. FIELD OFFICE (708-331-6700) AND THE VILLAGE OF MANHATTAN PUBLIC WORKS DEPARTMENT (815-482-8184) SHALL BE NOTIFIED TWO (2) WORKING DAYS BEFORE CONSTRUCTION BEGINS.
3. CONTRACTOR SHALL CONTACT PUBLIC IMPROVEMENT COORDINATOR DAN CHELLIOS AT (815) 478-3483 A MINIMUM OF 24 HOURS PRIOR TO STARTING CONSTRUCTION.
4. WHEN IN THE CONSTRUCTION OPERATION, IF ANY LOOSE MATERIAL IS DEPOSITED IN THE FLOW LINE OF DITCHES, GUTTERS, OR OTHER DRAINAGE STRUCTURES SO THAT THE NATURAL FLOW OF WATER IS OBSTRUCTED, IT SHALL BE REMOVED AT THE CLOSE OF EACH DAY BY THE CONTRACTOR AT HIS EXPENSE.
5. EXISTING DRAINAGE FACILITIES SHALL NOT BE UNNECESSARILY DISTURBED. THE CONTRACTOR SHALL PROVIDE TEMPORARY DRAINAGE FACILITIES WHEREVER NECESSARY TO MAINTAIN EXISTING DRAINAGE OUTLETS. THIS WORK SHALL BE INCIDENTAL TO THE CONTRACT.
6. AREAS DISTURBED BY CONSTRUCTION SHALL BE KEPT TO A MINIMUM. ALL AREAS DISTURBED UNNECESSARILY SHALL BE RESTORED AS REQUIRED IN THE SPECIAL PROVISIONS AT THE CONTRACTOR'S EXPENSE.
7. ALL PAVEMENT, CURB AND SIDEWALK REMOVALS SHALL BE MADE BY MEANS OF A STRAIGHT SAW CUT JOINT. THIS WORK SHALL NOT BE PAID FOR SEPARATELY, BUT SHALL BE INCLUDED IN THE UNIT PRICE BID FOR THE VARIOUS ITEMS.
8. THE APPROXIMATE LOCATION OF KNOWN PUBLIC UTILITIES ARE PROVIDED FOR THE CONTRACTOR'S USE, AND ARE BASED UPON INFORMATION AVAILABLE AT THE TIME OF THE ADVERTISEMENT FOR BIDS. THE OWNER AND ENGINEER DO NOT GUARANTEE THE ACCURACY OF UTILITIES INFORMATION. IT SHALL BE THE CONTRACTOR'S RESPONSIBILITY TO NOTIFY J.U.L.I.E. AT LEAST 48 HOURS PRIOR TO EXCAVATION TO VERIFY LOCATIONS OF ALL UTILITIES.
9. TEMPORARY ACCESS TO PROPERTIES AFFECTED BY THE CONSTRUCTION SHALL BE MAINTAINED AT ALL TIMES BY PLACEMENT OF TEMPORARY AGGREGATE. THE CONTRACTOR SHALL PERIODICALLY MONITOR ALL AFFECTED AREAS DURING THE PROJECT, AND SHALL PLACE ADDITIONAL AGGREGATE WHEN NECESSARY. THIS WORK WILL NOT BE PAID FOR DIRECTLY, BUT WILL BE CONSIDERED INCIDENTAL TO THE CONTRACT.
10. THE VILLAGE OF MANHATTAN PUBLIC WORKS DEPARTMENT (815-482-8184) SHALL BE NOTIFIED PRIOR TO THE OPENING OR CLOSING OF ALL WATER VALVES, FIRE HYDRANTS, AND/OR OTHER WATER SYSTEM APPURTENANCES.
11. ALL CONSTRUCTION OPERATIONS SHALL BE IN ACCORDANCE WITH THE IDOT STANDARD SPECIFICATIONS ADOPTED JANUARY 1, 2007. CONTRACTOR SHALL BE RESPONSIBLE AT ALL TIMES FOR TRAFFIC CONTROL AND PROTECTION IN ACCORDANCE WITH THE SPECIAL PROVISIONS. THIS WORK SHALL BE INCIDENTAL TO THE CONTRACT.
12. THE TOP OF ALL STRUCTURES SHALL BE FLUSH WITH THE ADJACENT SURFACE OR THE INDICATED ELEVATION SHOWN ON THE PLANS. FRAME ELEVATIONS ARE GIVEN ONLY TO ASSIST IN DETERMINING THE OVERALL HEIGHT OF THE STRUCTURE. FRAMES ON ALL NEW STRUCTURES SHALL BE ADJUSTED TO THE FINAL SURFACE ELEVATION AS PART OF THE NEW STRUCTURE COST.
13. ITEMS OF WORK LISTED IN THE SUMMARY OF QUANTITIES NOT SPECIFICALLY CALLED OUT ON THE PLANS SHALL BE PERFORMED AS DIRECTED BY THE ENGINEER.
14. ALL TRENCHES WITHIN 2 FEET OF PROPOSED PAVEMENT, DRIVEWAYS, OR SIDEWALK SHALL BE BACKFILLED WITH TRENCH BACKFILL ONLY.
15. IT SHALL BE THE CONTRACTOR'S RESPONSIBILITY TO VERIFY ALL DIMENSIONS AND CONDITIONS EXISTING IN THE FIELD PRIOR TO CONSTRUCTION AND ORDERING OF MATERIALS.
16. THE RESIDENT ENGINEER SHALL CONTACT MS. CORA MATHIS AREA TRAFFIC FIELD ENGINEER AT (847) 715-8428 AT MINIMUM OF 2 WEEKS PRIOR TO PLACEMENT OF PERMANENT PAVEMENT MARKINGS.
17. THE RESIDENT ENGINEER SHALL CONTACT THE TRAFFIC CONTROL SUPERVISOR AT (847) 705-4470 A MINIMUM OF 72 HOURS PRIOR TO THE PLACEMENT OF ANY TEMPORARY TRAFFIC CONTROL DEVICES.



HOT-MIX ASPHALT MIXTURE REQUIREMENT		
MIXTURE TYPE		AIR VOIDS
HOT-MIX ASPHALT SURFACE COURSE, MIX "D", N50 (IL-9.5 mm)		4% @ 50 GYR.
HOT-MIX ASPHALT BINDER COURSE, IL-19.0 mm, N50		4% @ 50 GYR.
* THE UNIT WEIGHT USED TO CALCULATE ALL HMA SURFACE MIXTURE QUANTITIES IS 112 LBS/SQYD/IN.		
* THE "AC TYPE" FOR POLYMERIZED HMA MIXES SHALL BE "SBS/SBR PG 70 -22" AND FOR NON-POLYMERIZED HMA THE "AC TYPE" SHALL BE "PG 64 -22" UNLESS MODIFIED BY DISTRICT ONE SPECIAL PROVISIONS. FOR "PERCENT OF RAP" SEE DISTRICT ONE SPECIAL PROVISIONS.		



FILE NAME = 07434-NOTE-01	USER NAME =	DESIGNED -- V.C.	REVISED --	STATE OF ILLINOIS DEPARTMENT OF TRANSPORTATION	MANHATTAN ROAD SIDEWALK IMPROVEMENTS			F.A.P. RTE. 0532	SECTION 09-00009-00-SW	COUNTY WILL	TOTAL SHEETS 13	SHEET NO. 3	
	PLOT SCALE = N/A	CHECKED -- V.C.	REVISED --		GENERAL NOTES AND CROSS SECTIONS			CONTRACT NO. 63309					
	PLOT DATE = 07-30-09	DRAWN -- LTL	REVISED --		SCALE: N/A	SHEET NO. 3	OF 13 SHEETS	STA. TO STA.	FED. ROAD DIST. NO. 1	ILLINOIS	FED. AID PROJECT ARA-9003 (360)		
		CHECKED -- V.C./J.R.	REVISED --										



NOTES:

1. A MINIMUM OF 2 WEEKS PRIOR TO PLACEMENT OF PERMANENT PAVEMENT MARKING, CONTACT CORA MATHIS, AREA TRAFFIC FIELD ENGINEER AT (815) 485-6475.

LEGEND

- (SW) PORTLAND CEMENT CONCRETE SIDEWALK, 5 INCH
- PROPOSED PAVEMENT
 - HMA SURFACE COURSE, MIX "D", N50, 1-1/2"
 - HMA BINDER COURSE, IL-19.0, N50, 8" (IN 3 LIFTS)
- CURB REMOVAL (PARTIAL)
 - CURB FACE SHALL BE SAWCUT TO DEPRESSED CURB;
 - CUT SHALL HAVE A 2' TRANSITION FROM EXISTING CURB TO DEPRESSED CURB AT EDGES OF PROP. SIDEWALK
- PROPOSED SIDEWALK
 - P.C.C. SIDEWALK 5 INCH, SPECIAL
 - AGGREGATE BASE COURSE, TYPE B, 4"
- DETECTABLE WARNINGS

FILE NAME = 07434-PLAN-01 P01

USER NAME =	DESIGNED — V.C.	REVISED — 11-11-08	IDOT REV
	CHECKED — V.C.	REVISED — 12-09-08	IDOT REV
PLOT SCALE = 1"=20'	DRAWN — EDG/JR	REVISED — 01-20-09	IDOT REV
PLOT DATE = 07-30-09	CHECKED — V.C./J.R.	REVISED —	

STATE OF ILLINOIS
DEPARTMENT OF TRANSPORTATION

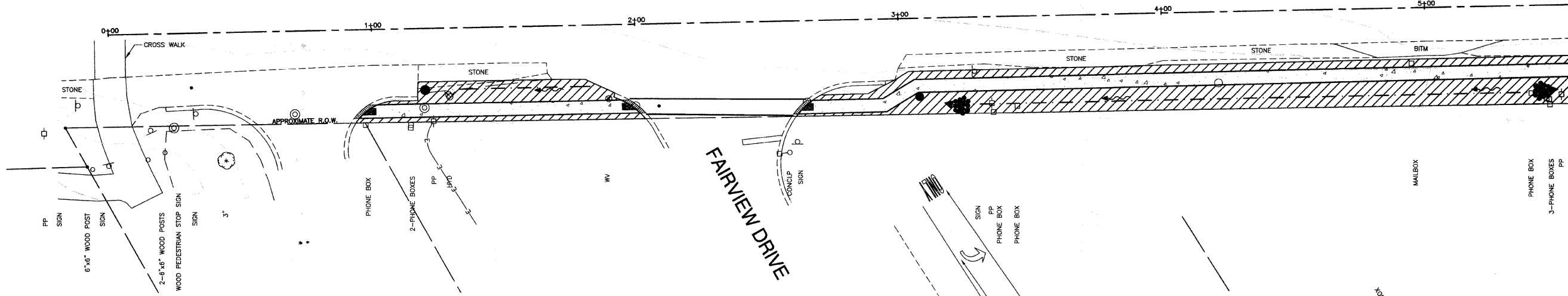
MANHATTAN ROAD SIDEWALK IMPROVEMENTS
GRADING AND UTILITY PLAN

SCALE: 1"=20' SHEET NO. 4 OF 13 SHEETS STA. TO STA.

F.A.P. RTE. 0532	SECTION 09-00009-00-SW	COUNTY WILL	TOTAL SHEETS 13	SHEET NO. 4
FED. ROAD DIST. NO. 1 ILLINOIS		FED. AID PROJECT ARA-9003 (360)	CONTRACT NO. 63309	

MANHATTAN ROAD

(WESTERN AVENUE)



NOTES:

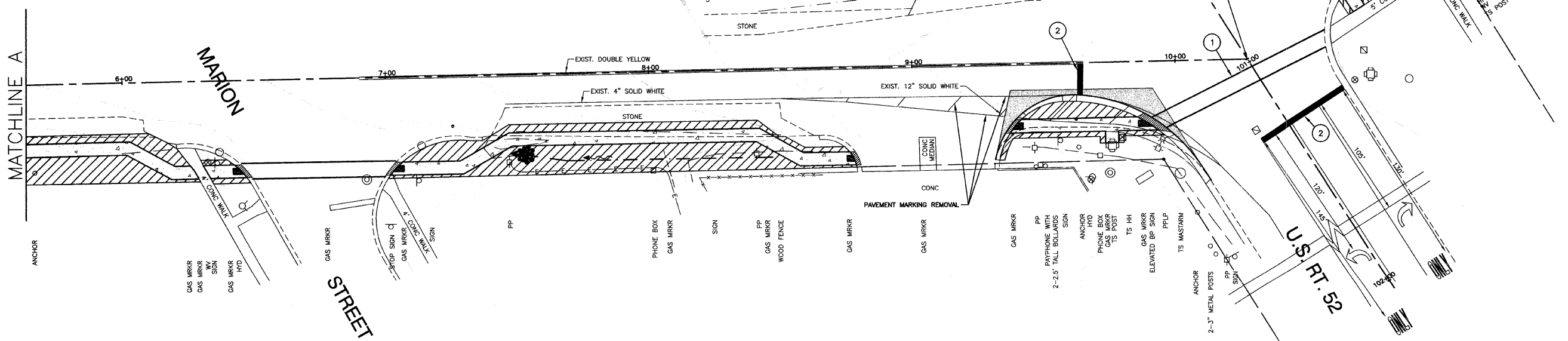
1. A MINIMUM OF 2 WEEKS PRIOR TO PLACEMENT OF PERMANENT PAVEMENT MARKING, CONTACT CORA MATHIS, AREA TRAFFIC FIELD ENGINEER AT (815) 485-6475.

LEGEND

- ① THERMOPLASTIC PAVEMENT MARKING - LINE, 6" (WHITE)
- ② THERMOPLASTIC PAVEMENT MARKING - LINE, 24" (WHITE)
- STONE RIPRAP CLASS A3 (1 SQ.YD. EACH LOCATION)
- TOPSOIL FURNISH & PLACE, 4" AND SODDING, SALT TOLERANT (SPECIAL)

MANHATTAN ROAD

(WESTERN AVENUE)



FILE NAME = 07434-PLAN-01 P02

USER NAME =	DESIGNED - V.C.	REVISED - 11-11-08 IDOT REV
	CHECKED - V.C.	REVISED - 12-09-08 IDOT REV
PLOT SCALE = 1"=20'	DRAWN - EDG/JR	REVISED - 01-20-09 IDOT REV
PLOT DATE = 07-30-09	CHECKED - V.C./J.R.	REVISED -

STATE OF ILLINOIS
DEPARTMENT OF TRANSPORTATION

MANHATTAN ROAD SIDEWALK IMPROVEMENTS

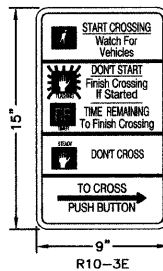
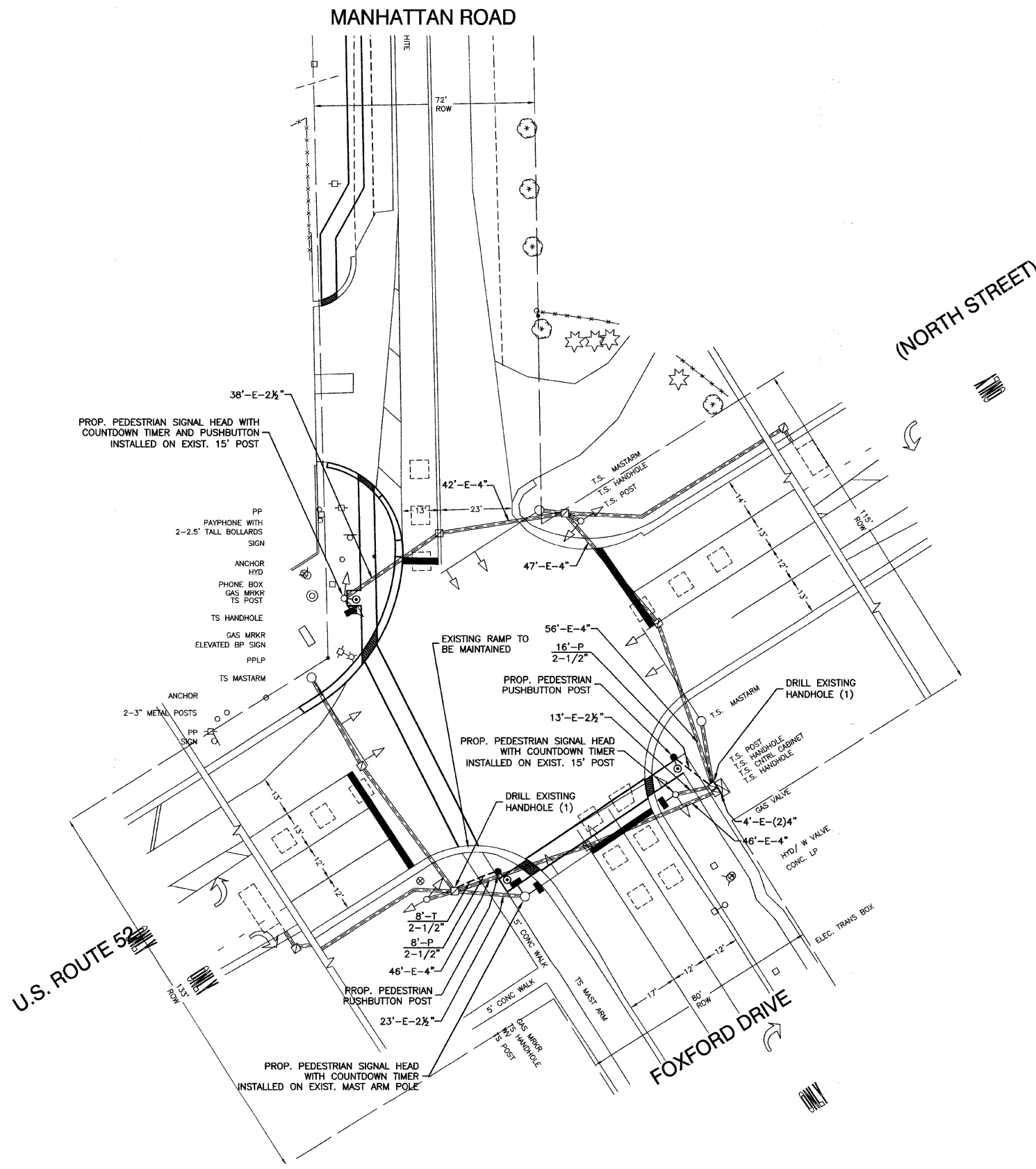
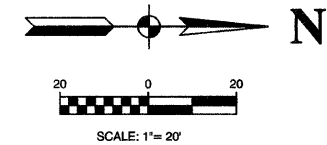
LANDSCAPING AND STRIPING PLAN

SCALE: 1"=20' SHEET NO. 5 OF 13 SHEETS STA. TO STA.

F.A.P. RTE.	SECTION	COUNTY	TOTAL SHEETS	SHEET NO.
0532	09-00009-00-SW	WILL	13	5
CONTRACT NO. 63309				
FED. ROAD DIST. NO. 1 ILLINOIS FED. AID PROJECT ARA-9003 (360)				

TRAFFIC SIGNAL LEGEND

	PROPOSED	EXISTING
CONTROLLER		
SERVICE INSTALLATION		
SIGNAL HEAD		
SIGNAL HEAD WITH BACKPLATE		
SIGNAL HEAD, PEDESTRIAN		
SIGNAL POST		
MAST ARM ASSEMBLY AND POLE, STEEL		
MAST ARM ASSEMBLY AND POLE, ALUMINUM		
COMBINATION MAST ARM ASSEMBLY AND POLE, STEEL WITH LUMINAIRE		
UNIT DUCT		
COMMON TRENCH		
HANDHOLE		
HEAVY DUTY HANDHOLE		
DOUBLE HANDHOLE		
G.S. CONDUIT IN GROUND		
PEDESTRIAN PUSHBUTTON DETECTOR		
DETECTOR LOOP		
CAST IRON JUNCTION BOX		
EMERGENCY VEHICLE SYSTEM DETECTOR		
CONFIRMATION BEACON		
SIGNAL HEAD OPTICALLY PROGRAMMED		
CONDUIT SPLICE		
WOOD POLE		
RACEWAY FOR MAGNETIC DETECTOR, TYPE I OR TYPE II		
VEHICLE DETECTOR, NON COMPENSATED MAGNETIC TYPE		
RAILROAD CONTROL CABINET		
TELEPHONE CONNECTION		
SIGNAL HEAD, PEDESTRIAN W/COUNT DOWN TIMER		

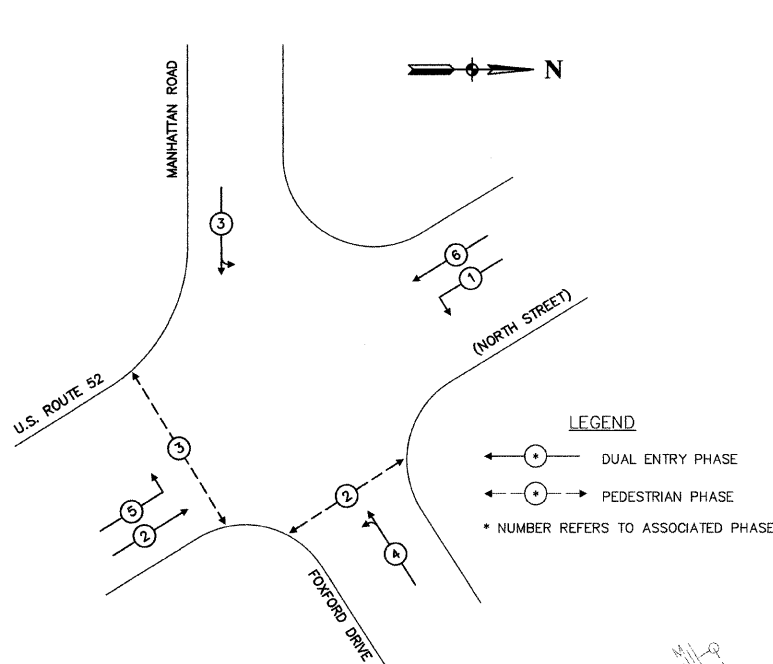


THE CONTRACTOR SHALL SUPPLY AND MOUNT ONE SIGN WITH EACH PEDESTRIAN PUSH BUTTON AND THIS SHALL BE INCLUDED IN THE COST OF THE PEDESTRIAN PUSH BUTTON PAY ITEM

RESTORATION OF WORK AREA. RESTORATION OF THE TRAFFIC SIGNAL WORK AREA SHALL BE INCLUDED IN THE RELATED PAY ITEMS SUCH AS FOUNDATION, CONDUIT, HANDHOLE, TRENCH AND BACKFILL, ETC. ALL ROADWAY SURFACES SUCH AS SHOULDERS, MEDIANS, SIDEWALKS, PAVEMENT, ETC., SHALL BE REPLACED IN KIND. ALL DAMAGE TO MOWED LAWNS SHALL BE REPLACED WITH AN APPROVED SOD, AND ALL DAMAGE TO UNMOWED FIELDS SHALL BE SEED. RESTORATION OF THE WORK AREA SHALL BE INCIDENTAL TO THE CONTRACT WITHOUT ANY EXTRA COMPENSATION ALLOWED TO THE CONTRACTOR.

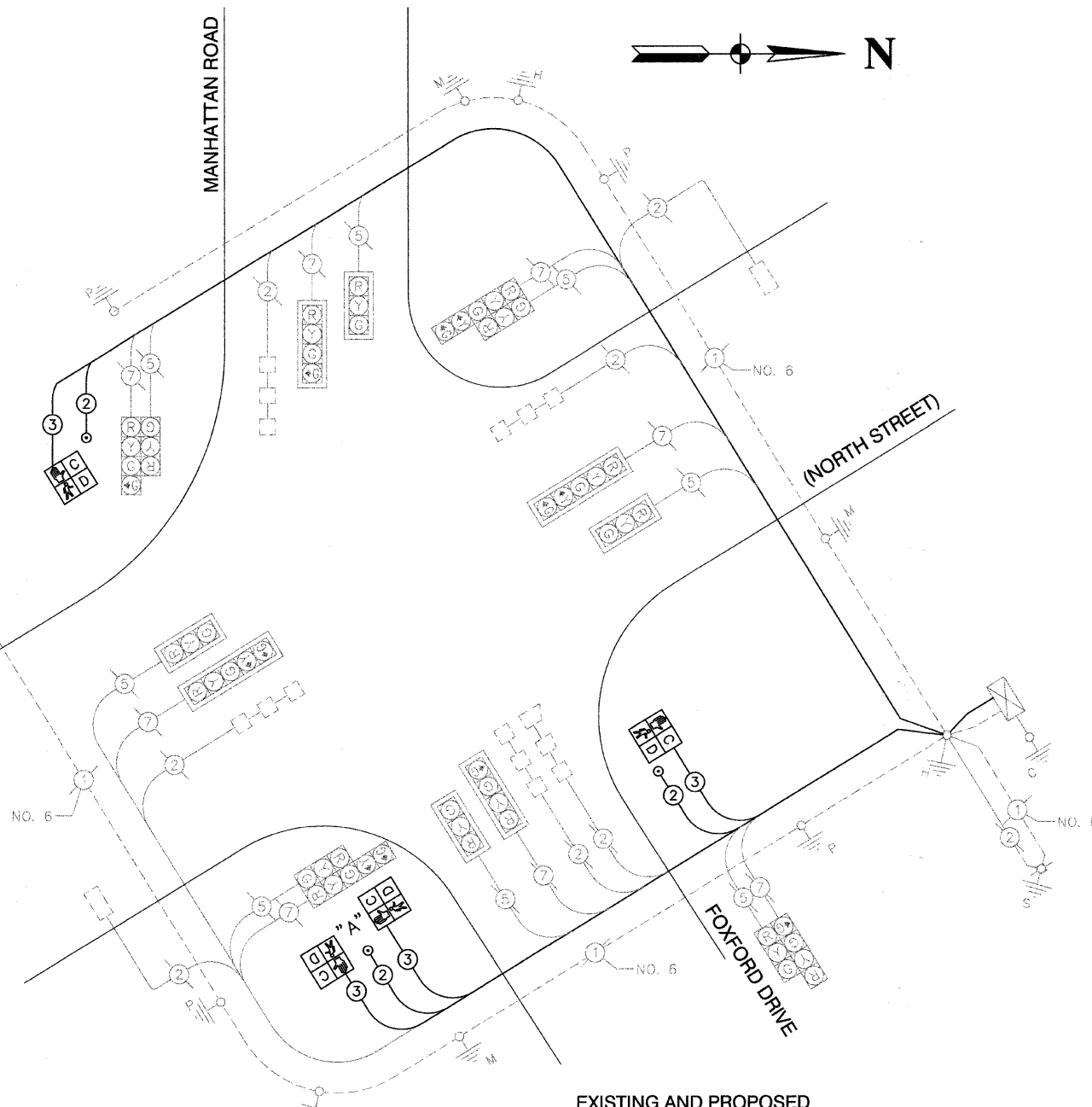
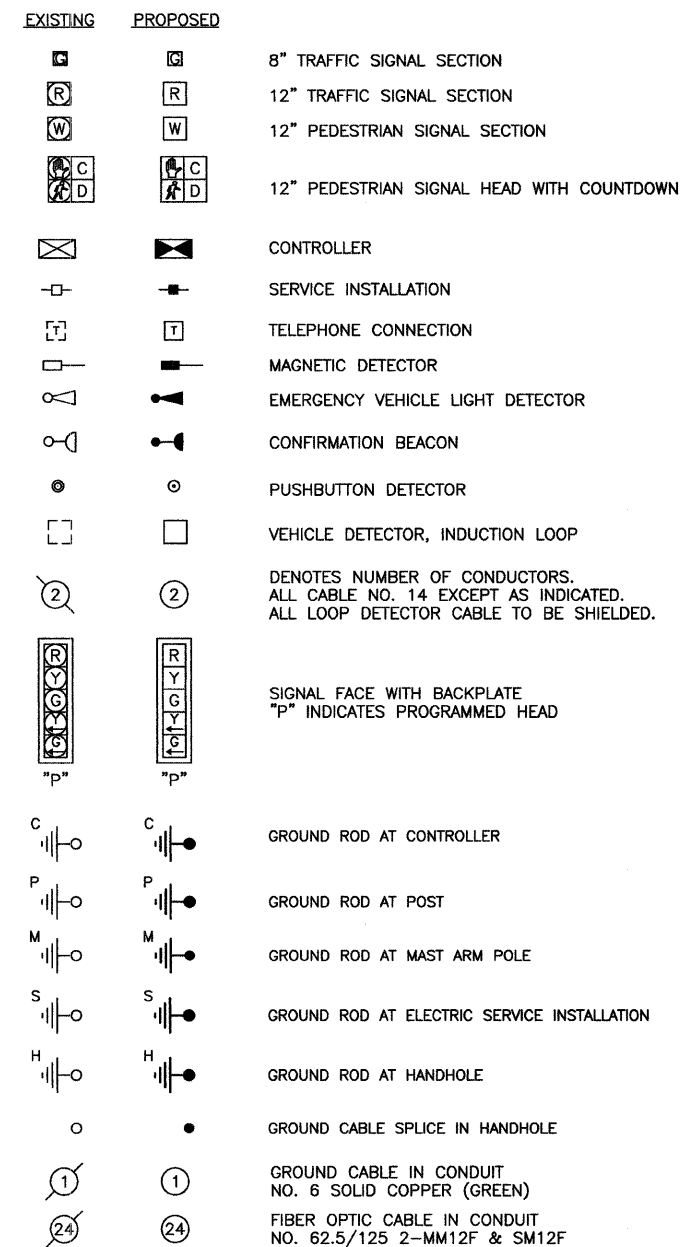
FILE NAME = 0734-SGNL-01	USER NAME =	DESIGNED -- V.C.	REVISED -- 11-11-08 IDOT REV	STATE OF ILLINOIS DEPARTMENT OF TRANSPORTATION	MANHATTAN ROAD SIDEWALK IMPROVEMENTS TRAFFIC SIGNALS TRAFFIC SIGNAL INSTALLATION	F.A.P. RTE.	SECTION	COUNTY	TOTAL SHEETS	SHEET NO.
		CHECKED -- V.C.	REVISED -- 12-09-08 IDOT REV			0532	09-00009-00-SW	WILL	13	6
PLOT SCALE = 1"=20'		DRAWN -- JRA	REVISED -- 01-20-09 IDOT REV			CONTRACT NO. 63309				
PLOT DATE = 07-30-09		CHECKED -- V.C./HLG	REVISED --			SCALE: 1"=20'	SHEET NO. 6 OF 13 SHEETS	STA. TO STA.	FED. ROAD DIST. NO. 1	ILLINOIS

CONTROLLER SEQUENCE



EXISTING AND PROPOSED PHASE DESIGNATION DIAGRAM

CABLE PLAN LEGEND



EXISTING AND PROPOSED CABLE PLAN

SCHEDULE OF QUANTITIES

ITEM	UNIT	QUAN
CONDUIT IN TRENCH, 2 1/2" DIA., GALVANIZED STEEL	FOOT	8
CONDUIT PUSHED, 2 1/2" DIA., GALVANIZED STEEL	FOOT	24
ELECTRIC CABLE IN CONDUIT, SIGNAL NO. 14 2C	FOOT	448
ELECTRIC CABLE IN CONDUIT, SIGNAL NO. 14 3C	FOOT	640
PEDESTRIAN PUSH-BUTTON POST, TYPE 1	EACH	2
DRILL EXISTING HANDHOLE	EACH	2
PEDESTRIAN SIGNAL HEAD, LED, 1-FACE, BRACKET MOUNTED WITH COUNTDOWN TIMER	EACH	2
PEDESTRIAN SIGNAL HEAD, LED, 2-FACE, BRACKET MOUNTED WITH COUNTDOWN TIMER	EACH	1
PEDESTRIAN PUSH-BUTTON	EACH	3
MODIFY EXISTING CONTROLLER	EACH	1
MAINTENANCE OF EXISTING TRAFFIC SIGNAL INSTALLATION	EACH	1
CONCRETE FOUNDATION, TYPE A	FOOT	8

TRAFFIC SIGNAL INSTALLATION ELECTRICAL SERVICE REQUIREMENTS					TOTAL WATTAGE
TYPE	NO. LAMPS	WATTAGE INCAND.	LED	%OPERATION	
SIGNAL (RED)	16	135	17	0.50	1080
(YELLOW)	16	135	25	0.25	540
(GREEN)	16	135	15	0.25	540
ARROW	12	135	12	0.10	162
PED. SIGNAL	4	90	25	1.00	100
CONTROLLER	1	100	100	1.00	100
ILLUM. SIGN		84		0.05	
FLASHER				0.50	
TOTAL =					2522

FOUNDATION (DEPTH)	FT. (m)	CABLE SLACK	FT. (m)	VERTICLE	FT. (m)
TYPE A - POST	4 (1.2)	HANDHOLE	6.5 (2.0)	ALL FOUNDATIONS	3.5 (1.0)
D - CONTROLLER	4 (1.2)	DOUBLE HANDHOLE	15 (4.0)	MAST ARM (L) POLE	20'-1-2' (6m+L-0.6m)
E - M. ARM POLE	2 (0.5)	SIGNAL POST	2 (0.5)	BRACKET MOUNTED	13 (4.0)
24" (600mm)	10 (3.0)	CONTROLLER CAB.	1 (0.5)	PED. PUSHBUTTON	4 (1.2)
30" (750mm)	15 (4.6)	FIBER OPTIC	13 (4.0)	ELECTRIC SERVICE	13.5 (4.1)
		ELECTRIC SERVICE	1 (0.5)	SERVICE TO GROUND	13.5 (4.1)
		GROUND CABLE	1 (0.5)	POST MOUNTED	6 (1.8)

NOTES:

1. ALL TRAFFIC SIGNAL CONTROLLER EQUIPMENT FOR THIS PROJECT SHALL BE ECONOLITE TO MATCH THE EXISTING SYSTEM.
2. ALL PROPOSED INDICATIONS SHALL BE LED.
3. PUSH BUTTON "A" SHALL PLACE A CALL IN PHASES 2 & 3.

FILE NAME = 07434-SIGNL-CBLE-01	USER NAME =	DESIGNED - V.C.	REVISED - 11-11-08 IDOT REV
		CHECKED - V.C.	REVISED - 12-09-08 IDOT REV
	PLOT SCALE = N/A	DRAWN - JRA	REVISED - 01-20-09 IDOT REV
	PLOT DATE = 07-30-09	CHECKED - V.C./HLG	REVISED -

STATE OF ILLINOIS DEPARTMENT OF TRANSPORTATION

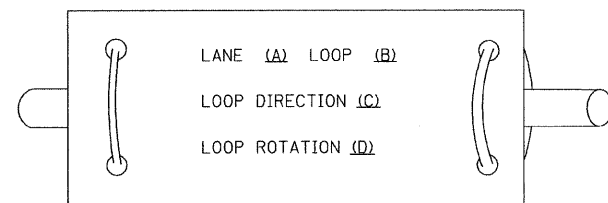
MANHATTAN ROAD SIDEWALK IMPROVEMENTS TRAFFIC SIGNALS CABLE PLAN			
SCALE: N/A	SHEET NO. 7	OF 13 SHEETS	STA. TO STA.

F.A.P. RTE. 0532	SECTION 09-00009-00-SW	COUNTY WILL	TOTAL SHEETS 13	SHEET NO. 7
CONTRACT NO. 63309				
FED. ROAD DIST. NO. 1 ILLINOIS FED. AID PROJECT ARA-9003 (360)				

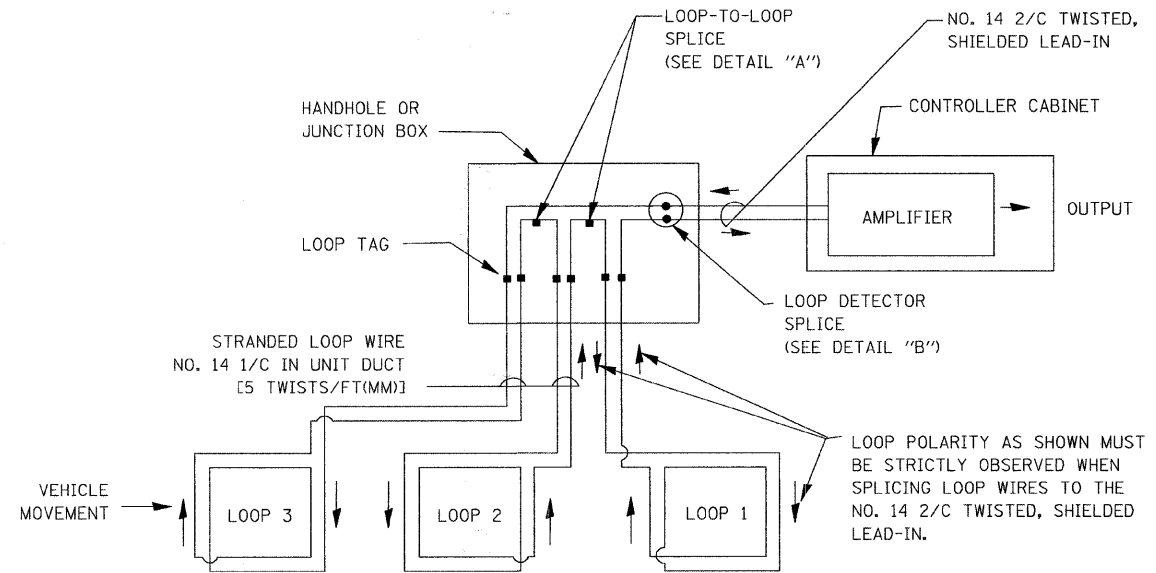
LOOP DETECTOR NOTES

1. EACH PAIR OF LOOP WIRES SHALL BE PLACED IN A SEPARATE UNIT DUCT FROM THE EDGE OF PAVEMENT TO THE HANDHOLE. SPACING BETWEEN THE HOLES DRILLED IN THE PAVEMENT SHALL NOT BE LESS THAN 6" (150 mm). UNIT DUCT SHALL BE INCLUDED IN THE COST OF THE LOOP WIRE.
2. THE NUMBER OF LOOP TURNS SHALL BE AS RECOMMENDED BY THE AMPLIFIER MANUFACTURER. ALL ADJACENT SIDES OF THE LOOPS SHALL BE INSTALLED IN SUCH A WAY THAT THE CURRENT FLOW IS IN THE SAME DIRECTION TO REINFORCE ITS MAGNETIC FIELDS FOR SMALL VEHICLE DETECTION.
3. EACH LOOP LEAD-IN SHALL BE IDENTIFIED AND PERMANENTLY TAGGED IN THE HANDHOLE. EACH LEAD-IN CABLE TAG SHALL INDICATE THE LOCATION OF THE LOOP, LOOP ROTATION (CLOCKWISE/COUNTERCLOCKWISE), LOOP LEAD-IN DIRECTION (IN OR OUT), LOOP CABLE NUMBER AND LOCATION IN CABINET, AND NUMBER OF TURNS IN THE DETECTOR LOOPS IN WATER PROOF INK AS INDICATED ON THE DISTRICT 1 STANDARD TRAFFIC SIGNAL DESIGN DETAIL. THE CONTRACTOR SHALL MARK LOOP LOCATIONS ON RECORD DRAWINGS AND PRESENT TO THE ENGINEER AFTER FINAL INSPECTION. LOOPS SHALL BE MARKED BY LANE AND LOOP NUMBER. SEE DETAIL BELOW.
4. ALL LOOP CABLE SHALL BE FASTENED WITH PLASTIC TIE WRAP TO THE HANDHOLE HOOKS.
5. IN ASPHALT PAVEMENT, LOOPS SHOULD BE PLACED IN THE BINDER AND DIVEHOLES MARKED AT THE CURB WITH A SAW-CUT. THE SAW-CUT SHALL BE CUT IN ACCORDANCE WITH LOCAL AND E.P.A. DUST CONTROL REQUIREMENTS. DETECTOR LOOP(S) SHALL NOT BE INSTALLED IN WET CONDITIONS AND THE SAW-CUTS MUST BE FREE OF DEBRIS AND RESIDUE SUCH AS DUST AND WATER WHICH IS TO BE ACHIEVED BY THE USE OF COMPRESSED AIR, WIRE BRUSHING AND HEAT DRYING ACCORDING TO SEALANT MANUFACTURER REQUIREMENTS. THE DETECTOR WIRE SHALL BE HELD IN PLACE BY THE USE OF FORM WEDGES. WEDGES SHALL BE SPACED NO MORE THAN 18" (450 mm) APART.
6. LOOP SPLICES SHALL BE SOLDERED USING A SOLDERING IRON. BLOW TORCHES OR OTHER DEVICES WHICH OXIDIZE COPPER CABLE SHALL NOT BE ALLOWED FOR SOLDERING OPERATIONS. SEE DETAIL BELOW RIGHT.
7. PREFORMED DETECTOR LOOPS SHALL BE USED, AS SHOWN ON THE PLANS, WHERE NEW CONCRETE PAVEMENT IS PROPOSED. THE INSTALLATION OF PREFORMED LOOPS SHALL BE IN ACCORDANCE WITH THE DISTRICT 1 SPECIFICATIONS OR AS DIRECTED BY THE ENGINEER.

LOOP LEAD-IN CABLE TAG

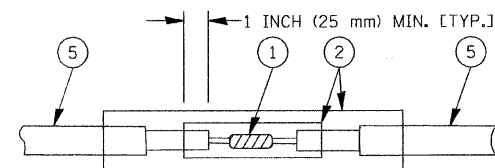


- A. LANE 1 IS THE LANE CLOSEST TO THE CENTERLINE OF THE ROADWAY
- B. LOOP #1 IS THE LOOP IN THE LANE CLOSEST TO THE INTERSECTION.
- C. LABEL LOOP CABLE "IN" OR LOOP CABLE "OUT".
- D. LABEL LOOP CABLE CLOCKWISE OR LOOP CABLE COUNTERCLOCKWISE.

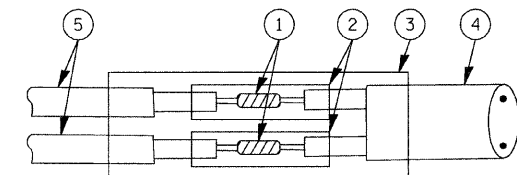


DETECTOR LOOP WIRING SCHEMATIC

- LOOPS SHALL BE SPLICED IN SERIES.
- SAW-CUTS SHALL BE A MINIMUM WIDTH OF 5/16" (8 mm).
- SAW-CUT DEPTHS SHALL BE 3" (75 mm). IF IN CONCRETE, THE SAW-CUT DEPTH SHALL BE TO THE TOP OF THE REINFORCEMENT.
- LOOP CORNERS SHALL BE DRILLED WITH A 2" (50 mm) DIAMETER CORE.



DETAIL "A"
LOOP-TO-LOOP SPLICE



DETAIL "B"
LOOP-TO-CONTROLLER SPLICE

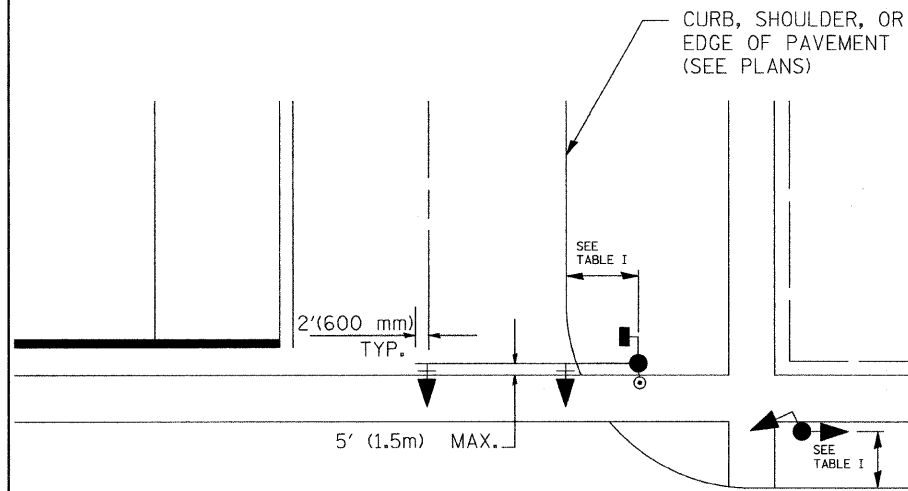
LOOP DETECTOR SPLICE

- 1 WESTERN UNION SPLICE SOLDERED WITH ROSIN CORE FLUX. ALL EXPOSED SURFACES OF THE SOLDER SHALL BE SMOOTH.
- 2 WCSMW 30/100 HEAT SHRINK TUBE, MINIMUM LENGTH 3" (75 mm), UNDERWATER GRADE.
- 3 WCS 200/750 HEAT SHRINK TUBE, MINIMUM LENGTH 6" (150 mm), UNDERWATER GRADE.
- 4 NO. 14 2/C TWISTED, SHIELDED CABLE.
- 5 LOOP CONDUCTOR WITH FLEXIBLE PLASTIC TUBE.

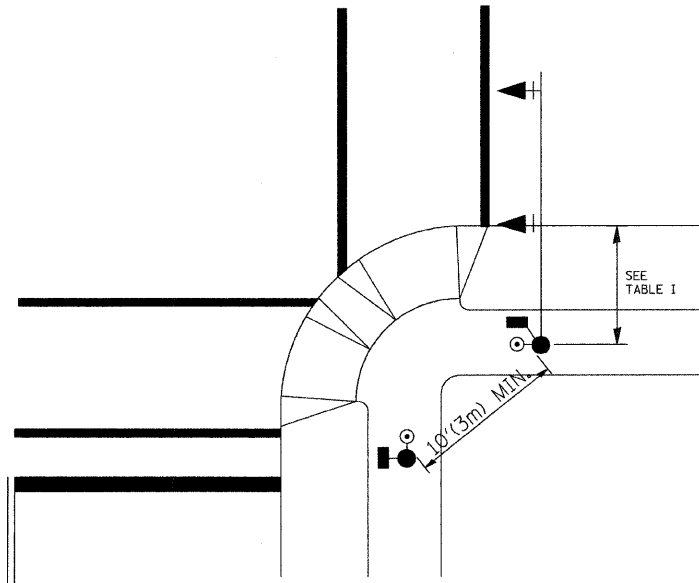
FILE NAME - 07434-00T-DTL-01-01	USER NAME = geglvanobts	DESIGNED - D.A.D.	REVISED - 11-12-01	STATE OF ILLINOIS DEPARTMENT OF TRANSPORTATION	DISTRICT ONE STANDARD TRAFFIC SIGNAL DESIGN DETAILS			F.A.P. RTE.	SECTION	COUNTY	TOTAL SHEETS	SHEET NO.
	PLOT SCALE = 50,0000' / IN.	CHECKED -	REVISIONS - BUR, TRAFFIC 01-01-					0532	09-00009-00-SW	WILL	13	8
	PLOT DATE = 1/4/2008	DRAWN - R.W.P.	REVISIONS -					TS-05				CONTRACT NO. 63309
		CHECKED - D.A.Z.	REVISIONS -					SCALE: SHEET NO. 8 OF 13 SHEETS STA. TO STA.				FED. ROAD DIST. NO. 1 ILLINOIS FED. AID PROJECT C-91-675-09

TRAFFIC SIGNAL MAST ARM AND POST

MAST ARM MOUNTED SIGNAL IN PROPOSED & FUTURE SIDEWALK AREA. INTERSECTION SHOWN WITH PEDESTRIAN SIGNAL AND PUSHBUTTON DETECTOR



PEDESTRIAN SIGNAL PUSHBUTTON



RECOMMENDED PUSHBUTTON LOCATIONS FOR ACCESSIBLE PEDESTRIAN SIGNALS SHALL BE IN ACCORDANCE WITH THE CURRENT MUTCD (SEE NOTE 1). TO MEET MUTCD REQUIREMENTS, PEDESTRIAN SIGNAL PUSHBUTTONS MAY HAVE TO BE MOUNTED ON A SEPARATE POST.

NOTES:

- AT ACCESSIBLE PEDESTRIAN SIGNAL LOCATIONS WITH PEDESTRIAN ACTUATION, EACH PUSHBUTTON SHALL ACTIVATE BOTH THE WALK INTERVAL AND THE ACCESSIBLE PEDESTRIAN SIGNALS.

AT ACCESSIBLE PEDESTRIAN SIGNAL LOCATIONS, PUSHBUTTONS SHOULD CLEARLY INDICATE WHICH CROSSWALK SIGNAL IS ACTUATED BY EACH PUSHBUTTON. PUSHBUTTONS AND TACTILE ARROWS SHOULD HAVE HIGH VISUAL CONTRAST (SEE THE DEPARTMENT OF JUSTICE'S AMERICANS WITH DISABILITIES ACT STANDARDS FOR ACCESSIBLE DESIGN, 1991). TACTILE ARROWS SHOULD POINT IN THE SAME DIRECTION AS THE ASSOCIATED CROSSWALK. AT CORNERS OF SIGNALIZED LOCATIONS WITH ACCESSIBLE PEDESTRIAN SIGNALS WHERE PEDESTRIAN PUSHBUTTONS ARE PROVIDED, THE PUSHBUTTONS SHOULD BE SEPARATED BY THE DISTANCE OF AT LEAST 10 FT (3m). THIS ENABLES PEDESTRIANS WHO HAVE VISUAL DISABILITIES TO DISTINGUISH AND LOCATE THE APPROPRIATE PUSHBUTTON.

PUSHBUTTONS FOR ACCESSIBLE PEDESTRIAN SIGNALS SHOULD BE LOCATED AS FOLLOWS:
 - A: ADJACENT TO A LEVEL ALL-WEATHER SURFACE TO PROVIDE ACCESS FROM A WHEELCHAIR, AND WHERE THERE IS AN ALL WEATHER SURFACE, WHEELCHAIR ACCESSIBLE ROUTE TO THE RAMP.
 - B: WITHIN 5 FT (1.5m) OF THE CROSSWALK EXTENDED.
 - C: WITHIN 10 FT (3m) OF THE EDGE OF CURB, SHOULDER, OR PAVEMENT.
 - D: PARALLEL TO THE CROSSWALK TO BE USED (SEE MUTCD FIGURE 4E-2).
 - E: NORMAL PEDESTRIAN PUSHBUTTON MOUNTING HEIGHT SHOULD BE 3.5 FT (1.05m) ABOVE ADJACENT SIDEWALK
- PEDESTRIAN SIGNAL FACES SHALL BE MOUNTED WITH THE BOTTOM OF THE HOUSING NOT LESS THAN 8 FT (2.4m) NOR MORE THAN 10 FT (3.0m) ABOVE THE SIDEWALK LEVEL AND SO THERE IS A PEDESTRIAN INDICATION IN THE LINE OF PEDESTRIANS' VISION WHICH PERTAINS TO THE CROSSWALK BEING USED.
- THE BOTTOM OF THE HOUSING OF A VEHICLE SIGNAL FACE, NOT MOUNTED OVER A ROADWAY, SHALL BE AT LEAST 10 FT (3.0m) BUT NOT MORE THAN 15 FT (4.5m) ABOVE THE SIDEWALK OR, ABOVE THE PAVEMENT GRADE AT THE CENTER OF THE HIGHWAY IF NO SIDEWALKS EXIST.
- THE BOTTOM OF THE HOUSING OF A VEHICLE SIGNAL FACE, MOUNTED OVER A ROADWAY, SHALL BE ACCORDING TO CURRENT STATE STANDARDS 877001 AND 877006. (16 FT (5m) MIN., 18 FT (5.5m) MAX., FROM HIGHEST POINT OF PAVEMENT)

PEDESTRIAN SIGNAL POST

PEDESTRIAN SIGNAL HEAD AND PEDESTRIAN PUSHBUTTON DETECTOR LOCATION

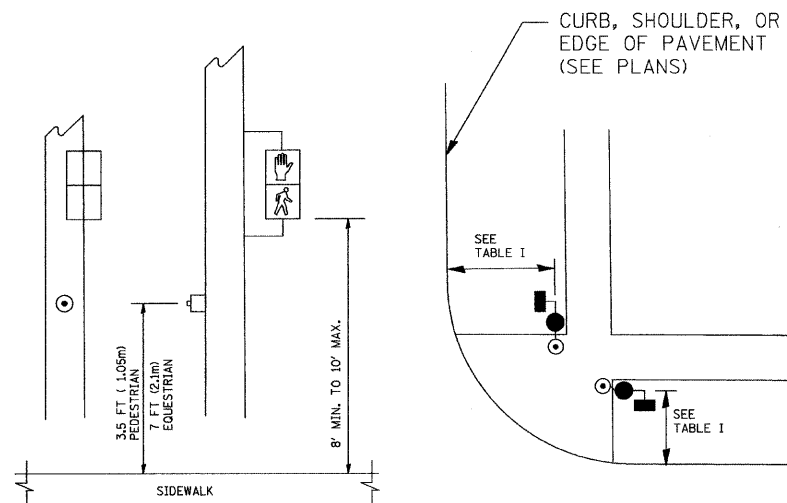


TABLE I

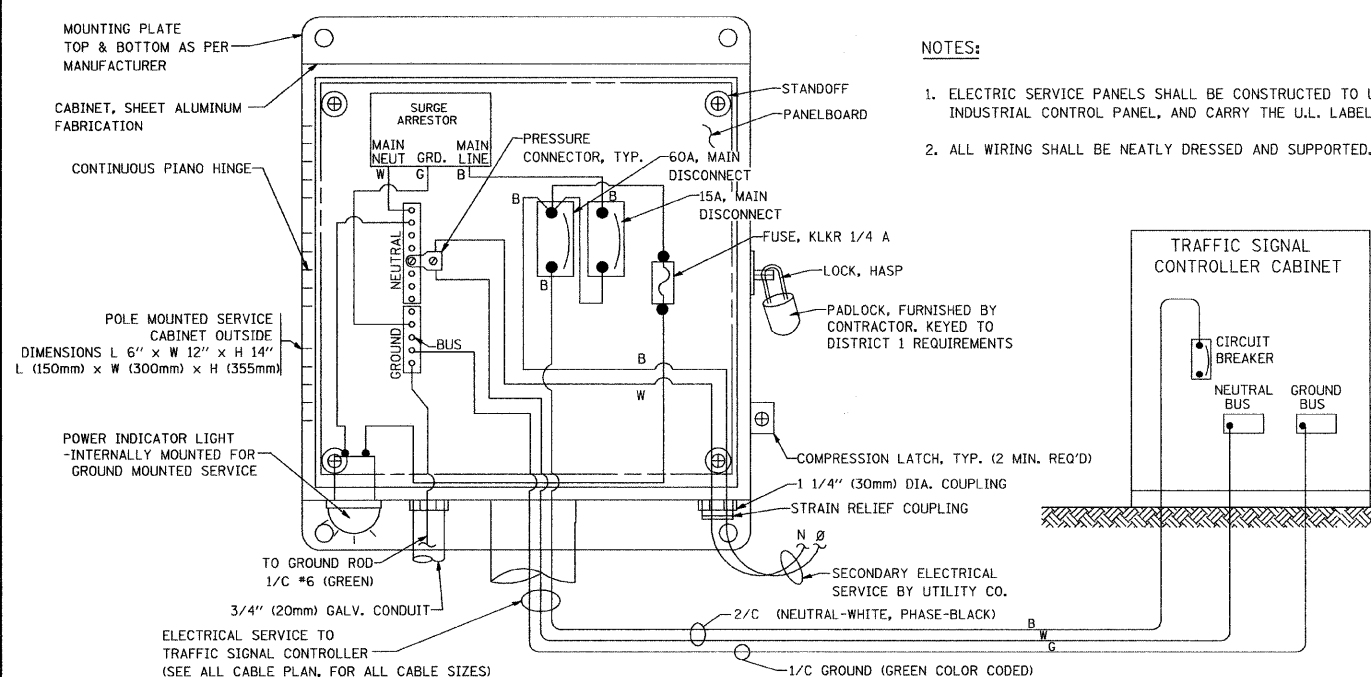
TRAFFIC SIGNAL EQUIPMENT	COMBINATION CONCRETE CURB AND GUTTER (MIN. DIST. FROM BACK OF CURB)	SHOULDER/NON-CURBED AREA (MIN. DIST. FROM EDGE OF PAVEMENT)
TRAFFIC SIGNAL MAST ARM POLE	6 FT (1.8m)	SHOULDER WIDTH + 2FT(0.6m), MINIMUM 10FT(3.0m)
TRAFFIC SIGNAL POST	4 FT (1.2m)	SHOULDER WIDTH + 2FT(0.6m), MINIMUM 10FT(3.0m)
PEDESTRIAN SIGNAL POST	4 FT (1.2m)	SHOULDER WIDTH + 2FT(0.6m), MINIMUM 10FT(3.0m)
PEDESTRIAN PUSHBUTTON	SEE NOTE 1	SEE NOTE 1

FILE NAME = 07434-IDOT-DTL5-02-01	USER NAME = gegl1enob1	DESIGNED -- D.A.D.	REVISED -- BUR. TRAFFIC 01-01-02
		CHECKED --	REVISED --
	PLOT SCALE = 50.0000' / IN.	DRAWN -- R.W.P.	REVISED --
	PLOT DATE = 1/4/2008	CHECKED -- D.A.Z.	REVISED --

**STATE OF ILLINOIS
DEPARTMENT OF TRANSPORTATION**

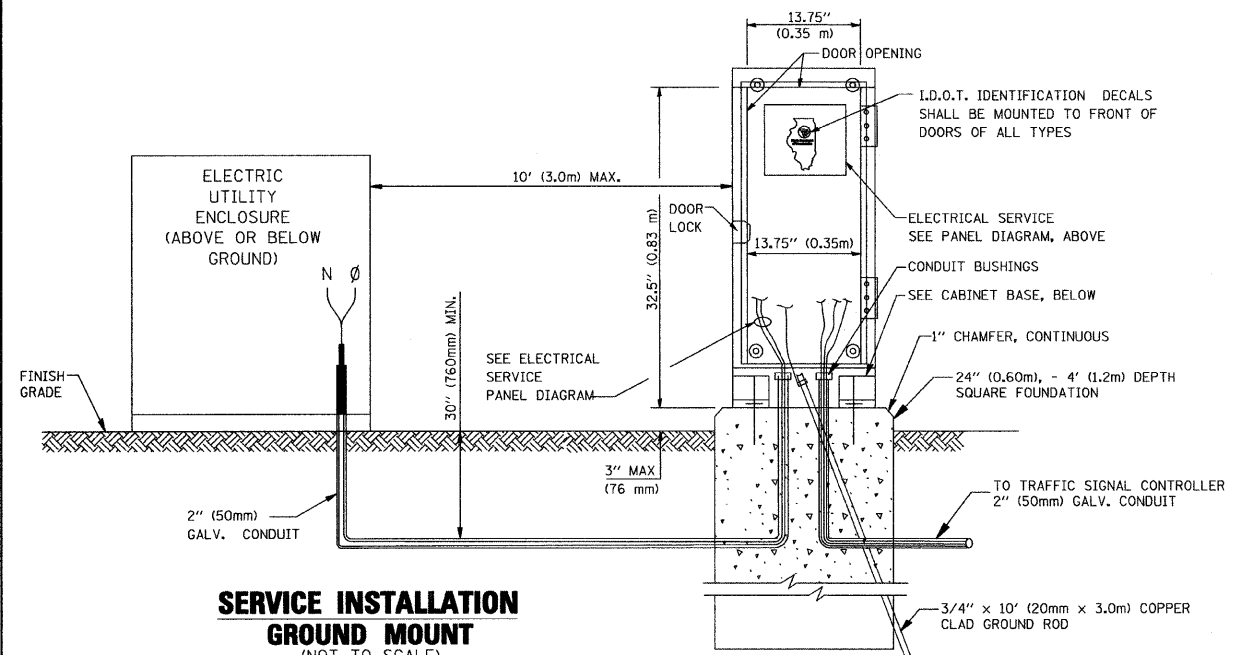
DISTRICT ONE			
STANDARD TRAFFIC SIGNAL DESIGN DETAILS			
SCALE:	SHEET NO. 9 OF 13 SHEETS	STA.	TO STA.

F.A.P. RTE.	SECTION	COUNTY	TOTAL SHEETS	SHEET NO.
0532	09-00009-00-SW	WILL	13	9
TS-05			CONTRACT NO. 63309	
FED. ROAD DIST. NO. 1 ILLINOIS FED. AID PROJECT C-91-675-09				

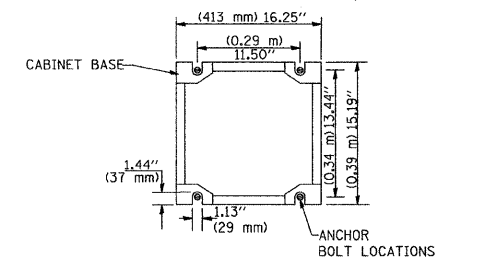


ELECTRICAL SERVICE - PANEL DIAGRAM (TYPICAL FOR POLE AND GROUND MOUNTED SERVICE)

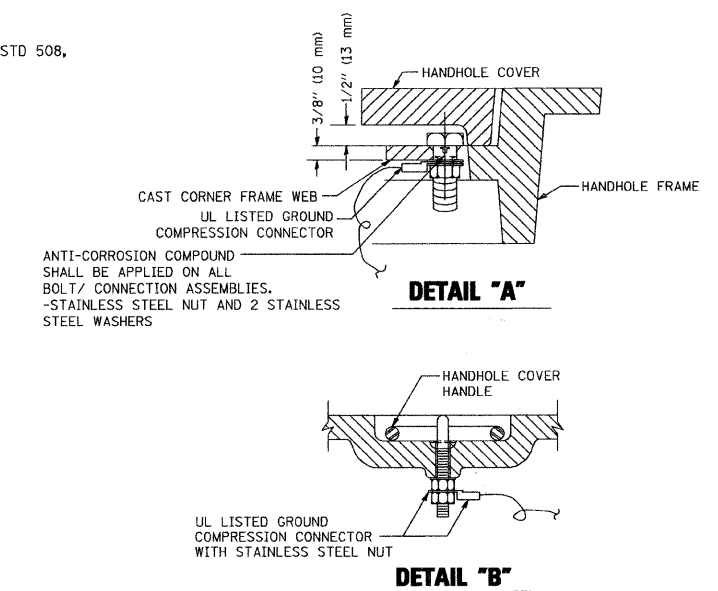
SERVICE INSTALLATION POLE MOUNT (SHOWN)
(NOT TO SCALE)



SERVICE INSTALLATION GROUND MOUNT
(NOT TO SCALE)

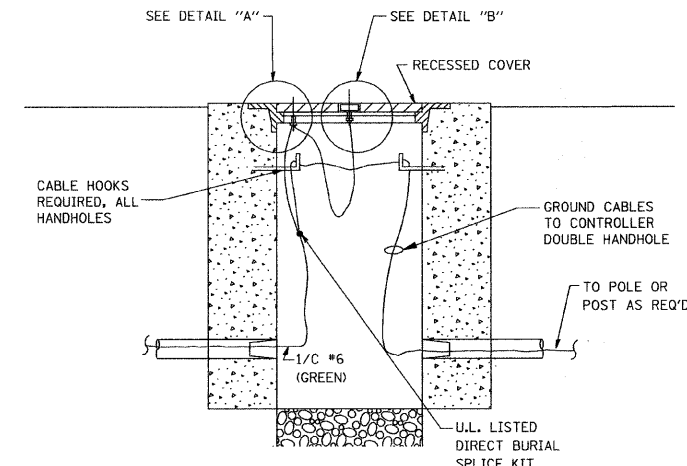


CABINET - BASE BOLT PATTERN
(NOT TO SCALE)

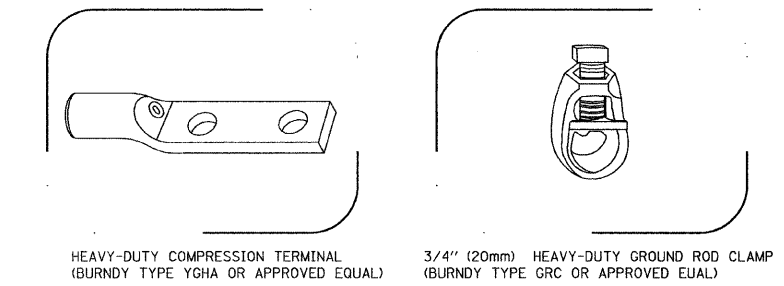


NOTES:
GROUNDING SYSTEM

- THE GROUNDING SYSTEM SHALL CONSIST OF AN INSULATED CONDUCTOR TYPE XLP, NO. 6 A.W.G., STRANDED COPPER TO BE INSTALLED IN RACEWAYS. THE GROUNDING CABLE SHALL BE INSTALLED IN A CONTINUOUS MANNER AS SHOWN ON THE CABLE PLAN PROVIDED. ALL GROUNDING CONDUCTORS SHALL BE BONDED TO METAL ENCLOSURE (HANDHOLE, POST, MAST ARM, CONTROLLER, ETC.). GROUND ROD SHALL BE 3/4" DIA. x 10'-0" (20mm x 3.0m) LONG, COPPER CLAD. ONE GROUND ROD SHALL BE INSTALLED AT ALL POST FOUNDATIONS, POLE FOUNDATIONS, CONTROLLER CABINET FOUNDATION AND ELECTRICAL SERVICE INSTALLATION AS INDICATED ON THE CABLE PLAN. IF THERE ARE ANY SPECIAL CONDITIONS SUCH AS SUB-SURFACE CONDITIONS OR INSTALLATION PROBLEMS, THE RESIDENT ENGINEER SHALL BE NOTIFIED OR CONTACT THE BUREAU OF TRAFFIC, ILLINOIS DEPARTMENT OF TRANSPORTATION DISTRICT ONE AT (847) 705-4139.
- THE NEUTRAL CONDUCTOR AND THE GROUND CONDUCTOR SHALL BE CONNECTED IN THE SERVICE INSTALLATION. AT NO OTHER POINT IN THE TRAFFIC SIGNAL SYSTEM SHALL THE NEUTRAL AND GROUND CONDUCTORS BE CONNECTED.
- ALL EQUIPMENT GROUNDING CONDUCTORS SHALL TERMINATE AT THE GROUND BUS IN THE CONTROLLER CABINET.
- THE CONTRACTOR SHALL PROVIDE A GROUND CABLE WITH CONNECTORS BETWEEN THE HANDHOLE COVER AND HANDHOLE FRAME.

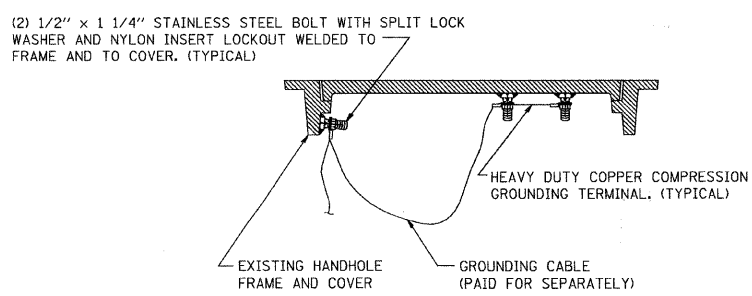


HANDHOLE COVER & FRAME - GROUNDING DETAIL
(NOT TO SCALE)

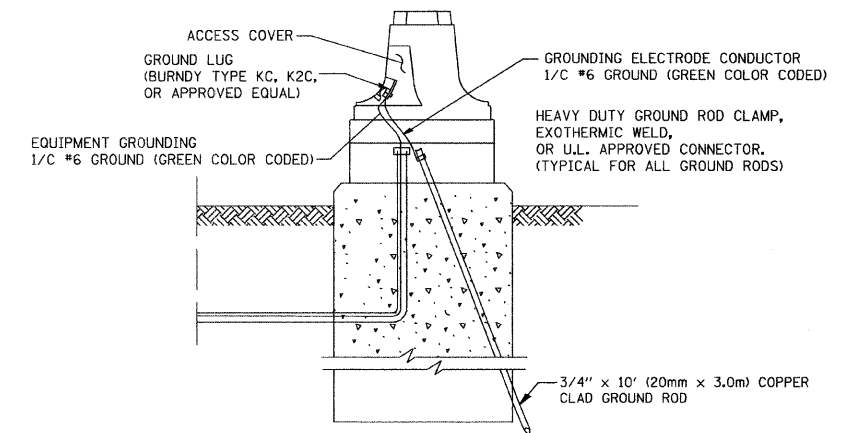


HEAVY-DUTY COMPRESSION TERMINAL (BURNDY TYPE YGHA OR APPROVED EQUAL)
3/4" (20mm) HEAVY-DUTY GROUND ROD CLAMP (BURNDY TYPE GRC OR APPROVED EQUAL)

- NOTES:**
- ALL CLAMPS SHALL BE BRONZE OR COPPER, UL APPROVED.
 - GROUND CABLE SHALL BE LOOPED OVER HOOKS IN THE HANDHOLES. 6.5' (2.0m) SLACK SHALL BE PROVIDED IN SINGLE HANDHOLES. 13' (4.0m) OF SLACK SHALL BE PROVIDED IN DOUBLE HANDHOLES. 5' (1.4m) OF SLACK SHALL BE PROVIDED BETWEEN FRAME AND COVER.

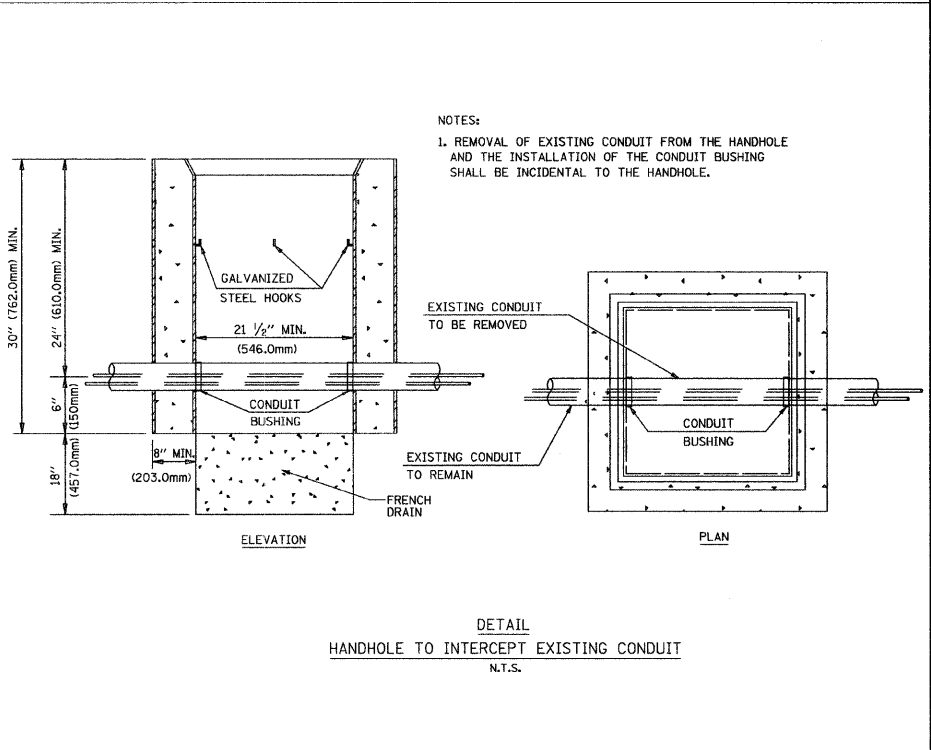
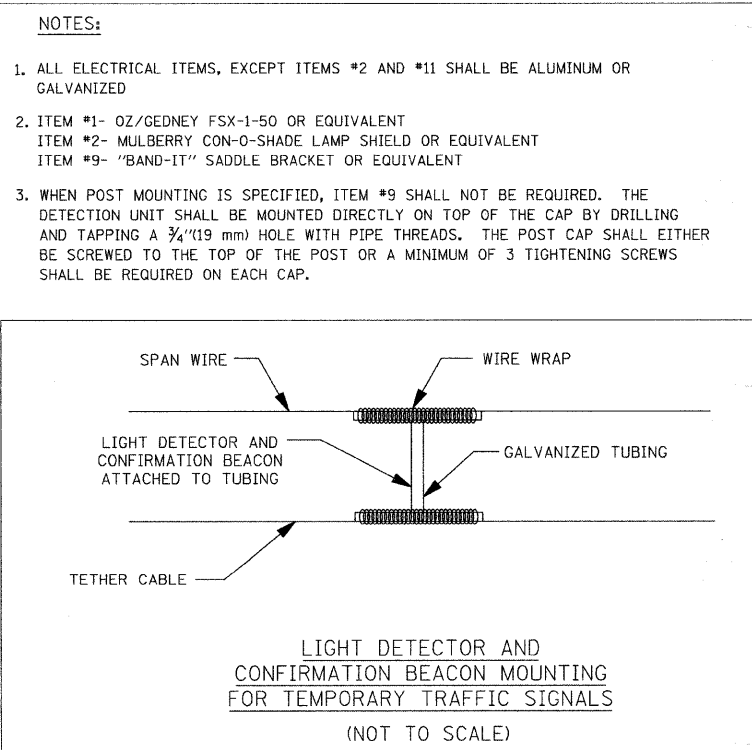
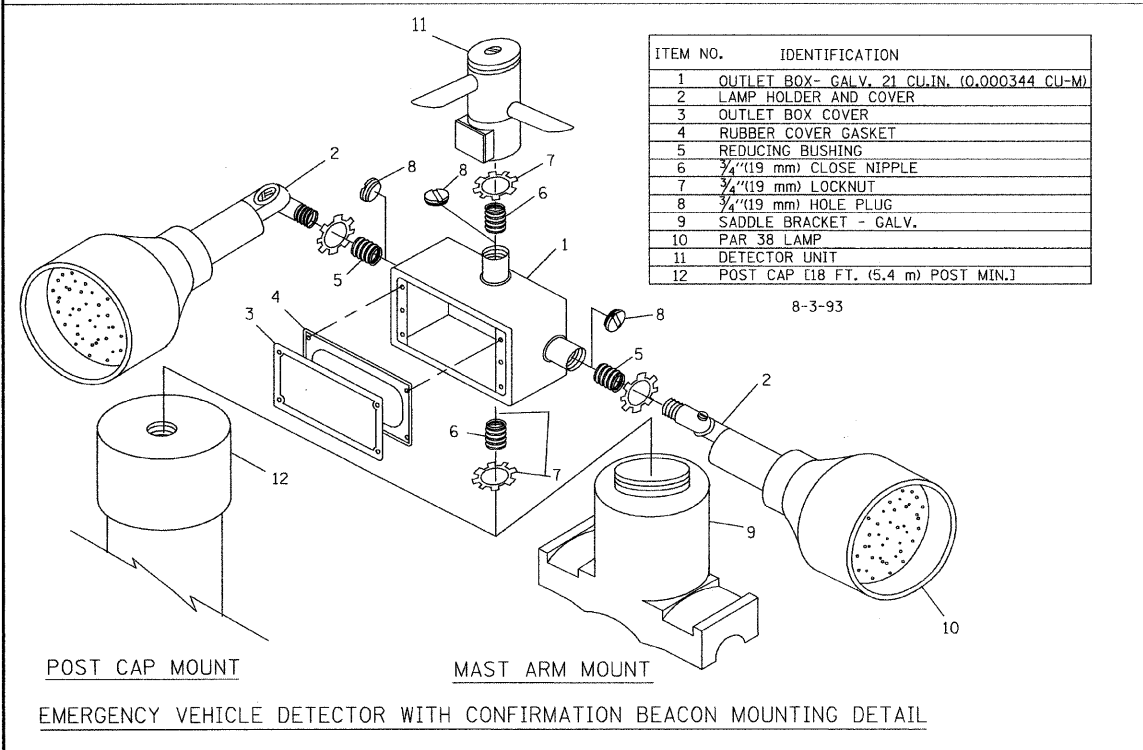
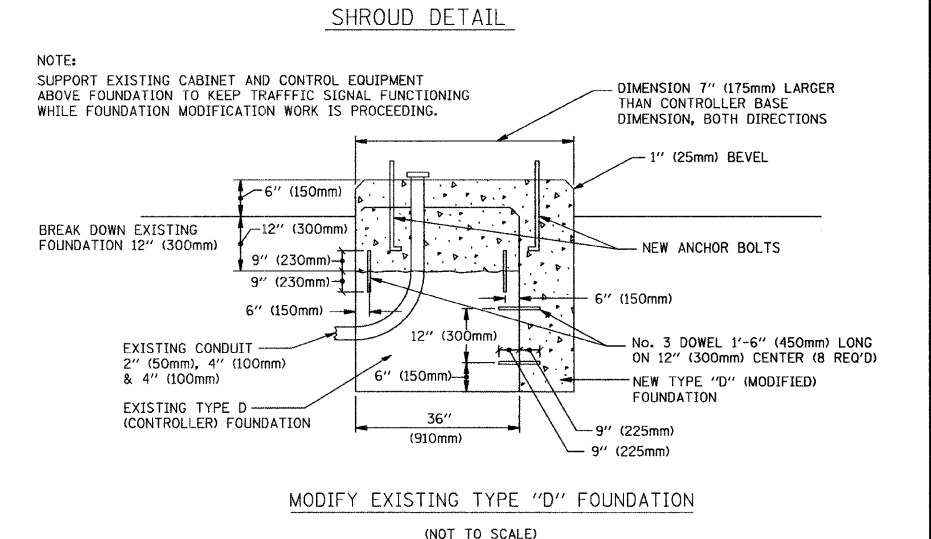
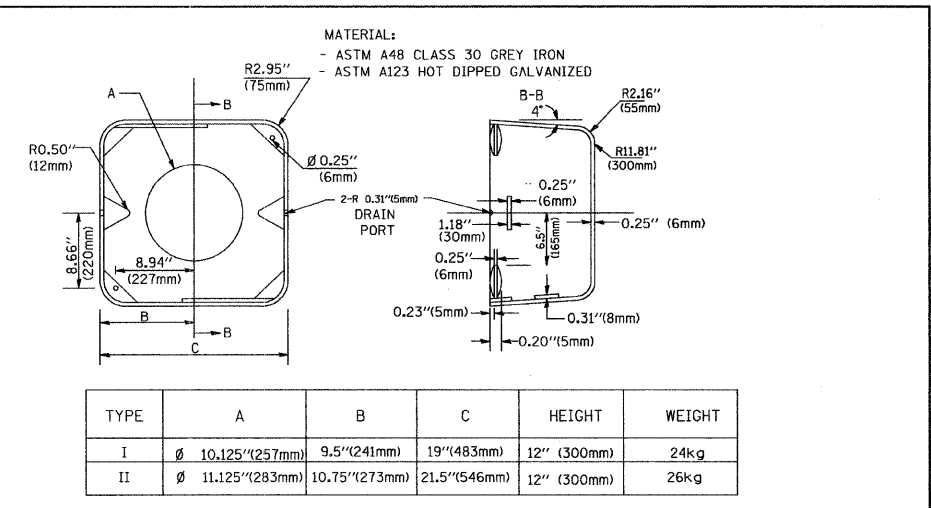
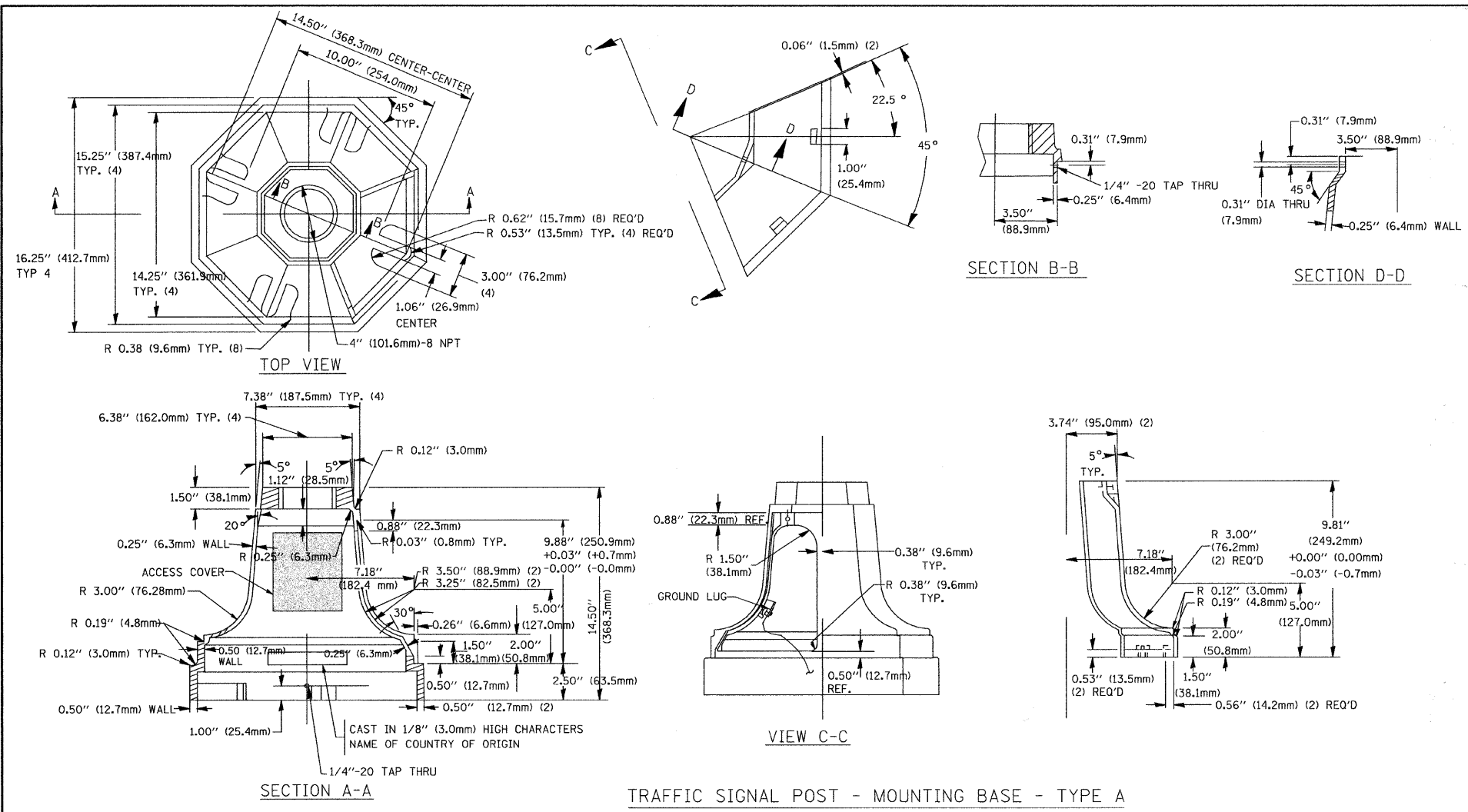


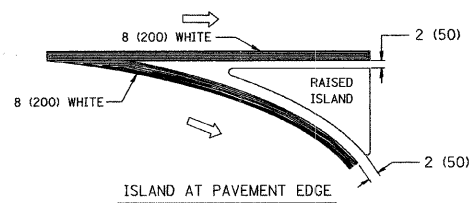
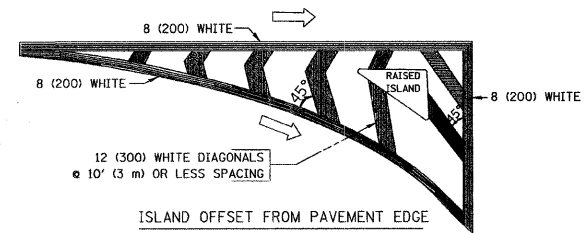
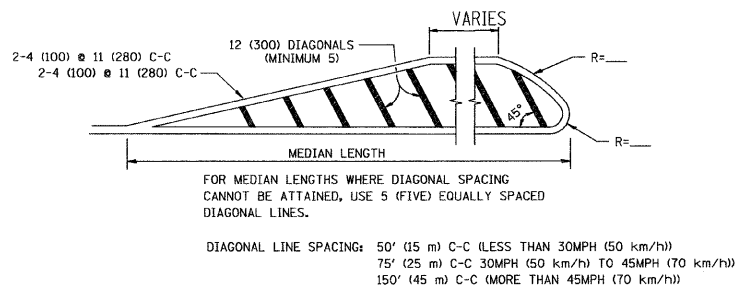
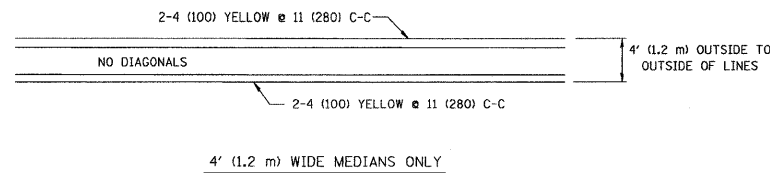
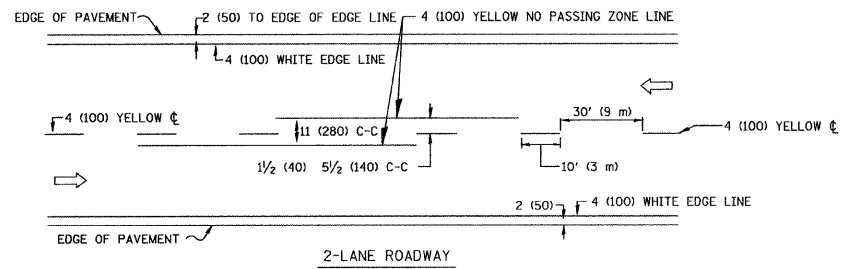
EXISTING HANDHOLE COVER & FRAME - GROUNDING DETAIL
(NOT TO SCALE)



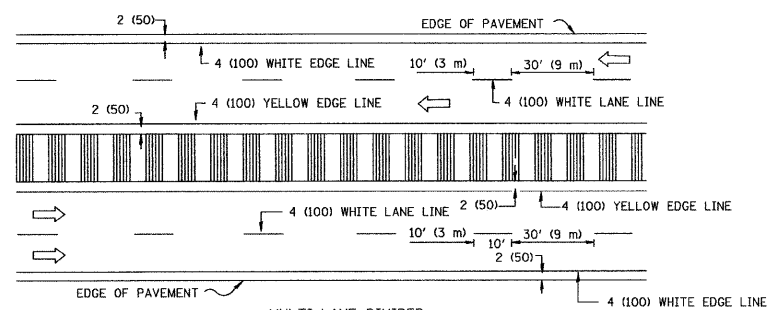
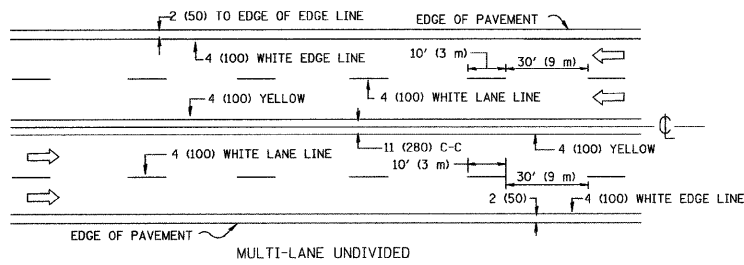
MAST ARM POLE / POST-GROUNDING DETAIL
(NOT TO SCALE)

FILE NAME = 07434-IDOT-015-03-01	USER NAME = goglianobt	DESIGNED - D.A.D.	REVISED - 03-15-01	STATE OF ILLINOIS DEPARTMENT OF TRANSPORTATION	DISTRICT ONE STANDARD TRAFFIC SIGNAL DESIGN DETAILS	F.A.P. RTE. 0532	SECTION 09-00009-00-SW	COUNTY WILL	TOTAL SHEETS 13	SHEET NO. 10		
PLOT SCALE = 50.0000' / IN.	DRAWN - R.W.P.	CHECKED - D.A.Z.	REVISED - BUR. TRAFFIC 01-01-02			SCALE:	SHEET NO. 10 OF 13 SHEETS	STA. TO STA.	FED. ROAD DIST. NO. 1 ILLINOIS FED. AID PROJECT C-91-675-09			
PLOT DATE = 1/4/2008	CHECKED - D.A.Z.	REVISED -	REVISED -			CONTRACT NO. 63309						
TS-05												



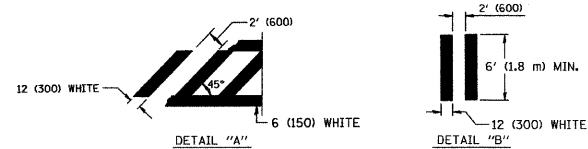
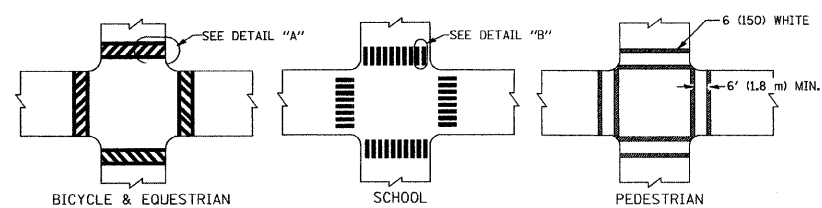


TYPICAL ISLAND MARKING

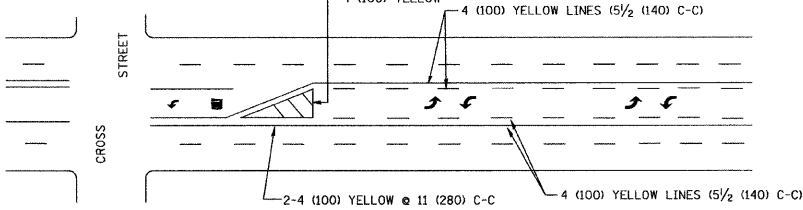


NOTE: MEDIANS WITH BARRIER CURB DO NOT REQUIRE AN EDGE LINE

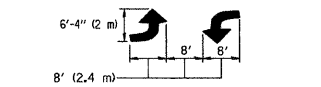
TYPICAL LANE AND EDGE LINE MARKING



TYPICAL CROSSWALK MARKING

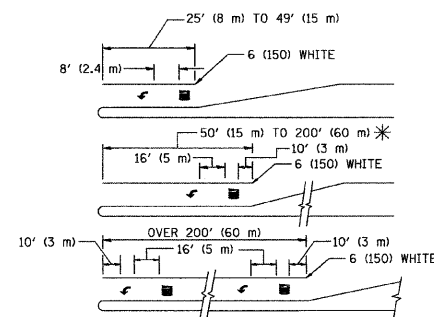


A MINIMUM OF TWO PAIRS OF TURN ARROWS SHALL BE USED, WHITE IN COLOR. ADDITIONAL PAIRS SHALL BE PLACED AT 200' (60 m) TO 300' (90 m) INTERVALS.



MEDIAN WITH TWO-WAY LEFT TURN LANE

TYPICAL PAINTED MEDIAN MARKING



FULL SIZE LETTERS 8' (2.4 m) AND ARROWS SHALL BE USED.
* AREA = 15.6 SQ. FT. (1.5 m²) ONLY AREA = 20.8 SQ. FT. (1.9 m²)
* TURN LANES IN EXCESS OF 400' (120 m) IN LENGTH MAY HAVE AN ADDITIONAL SET OF ARROW - "ONLY" INSTALLED MIDWAY BETWEEN THE OTHER TWO SETS OF ARROW - "ONLY".

TYPICAL LEFT (OR RIGHT) TURN LANE

TYPICAL TURN LANE MARKING

TYPE OF MARKING	WIDTH OF LINE	PATTERN	COLOR	SPACING / REMARKS
CENTERLINE ON 2 LANE PAVEMENT	4 (100)	SKIP-DASH	YELLOW	10' (3 m) LINE WITH 30' (9 m) SPACE
CENTERLINE ON MULTI-LANE UNDIVIDED PAVEMENT	2 @ 4 (100)	SOLID	YELLOW	11 (280) C-C
NO PASSING ZONE LINES: FOR ONE DIRECTION FOR BOTH DIRECTIONS	4 (100) 2 @ 4 (100)	SOLID SOLID	YELLOW YELLOW	5 1/2 (140) C-C FROM SKIP-DASH CENTERLINE 11 (280) C-C OMIT SKIP-DASH CENTERLINE BETWEEN
LANE LINES	4 (100) 5 (125) ON FREEWAYS	SKIP-DASH SKIP-DASH	WHITE WHITE	10' (3 m) LINE WITH 30' (9 m) SPACE
DOTTED LINES (EXTENSIONS OF CENTER, LANE OR TURN LANE MARKINGS)	SAME AS LINE BEING EXTENDED	SKIP-DASH	SAME AS LINE BEING EXTENDED	2' (600) LINE WITH 6' (1.8 m) SPACE
EDGE LINES	4 (100)	SOLID	YELLOW-LEFT WHITE-RIGHT	OUTLINE MOUNTABLE MEDIANS IN YELLOW; EDGE LINES ARE NOT USED NEXT TO BARRIER CURB
TURN LANE MARKINGS	6 (150) LINE; FULL SIZE LETTERS & SYMBOLS (8' (2.4m))	SOLID	WHITE	SEE TYPICAL TURN LANE MARKING DETAIL
TWO WAY LEFT TURN MARKING	2 @ 4 (100) EACH DIRECTION 8' (2.4m) LEFT ARROW	SKIP-DASH AND SOLID IN PAIRS	YELLOW WHITE	10' (3 m) LINE WITH 30' (9 m) SPACE FOR SKIP-DASH; 5 1/2 (140) C-C BETWEEN SOLID LINE AND SKIP-DASH LINE SEE TYPICAL TWO-WAY LEFT TURN MARKING DETAIL
CROSSWALK LINES (PEDESTRIAN A. DIAGONALS (BIKE & EQUESTRIAN) B. LONGITUDINAL BARS (SCHOOL))	2 @ 6 (150) 12 (300) @ 45° 12 (300) @ 90°	SOLID SOLID SOLID	WHITE WHITE WHITE	NOT LESS THAN 6' (1.8 m) APART 2' (600) APART SEE TYPICAL CROSSWALK MARKING DETAILS.
STOP LINES	24 (600)	SOLID	WHITE	PLACE 4' (1.2 m) IN ADVANCE OF AND PARALLEL TO CROSSWALK, IF PRESENT. OTHERWISE, PLACE AT DESIRED STOPPING POINT. PARALLEL TO CROSSROAD CENTERLINE, WHERE POSSIBLE.
PAINTED MEDIANS	2 @ 4 (100) WITH 12 (300) DIAGONALS @ 45° NO DIAGONALS USED FOR 4' (1.2 m) WIDE MEDIANS	SOLID	YELLOW: TWO WAY TRAFFIC WHITE: ONE WAY TRAFFIC	11 (280) C-C FOR THE DOUBLE LINE SEE TYPICAL PAINTED MEDIAN MARKING.
GORE MARKING AND CHANNELIZING LINES	8 (200) WITH 12 (300) DIAGONALS @ 45°	SOLID	WHITE	DIAGONALS: 15' (4.5 m) C-C (LESS THAN 30MPH (50 km/h)) 20' (6 m) C-C (30MPH (50 km/h) TO 45MPH (70 km/h)) 30' (9 m) C-C (OVER 45MPH (70 km/h))
RAILROAD CROSSING	24 (600) TRANSVERSE LINES; "RR" IS 6' (1.8 m) LETTERS; 16 (400) LINE FOR "X"	SOLID	WHITE	SEE STATE STANDARD 780001 AREA OF: "R"=3.6 SQ. FT. (0.33 m ²) EACH "X"=54.0 SQ. FT. (5.0 m ²)
SHOULDER DIAGONALS	12 (300) @ 45°	SOLID	WHITE - RIGHT YELLOW - LEFT	50' (15 m) C-C (LESS THAN 30MPH (50 km/h)) 75' (25 m) C-C (30 MPH (50 km/h) TO 45MPH (70 km/h)) 150' (45 m) C-C (OVER 45MPH (70 km/h))

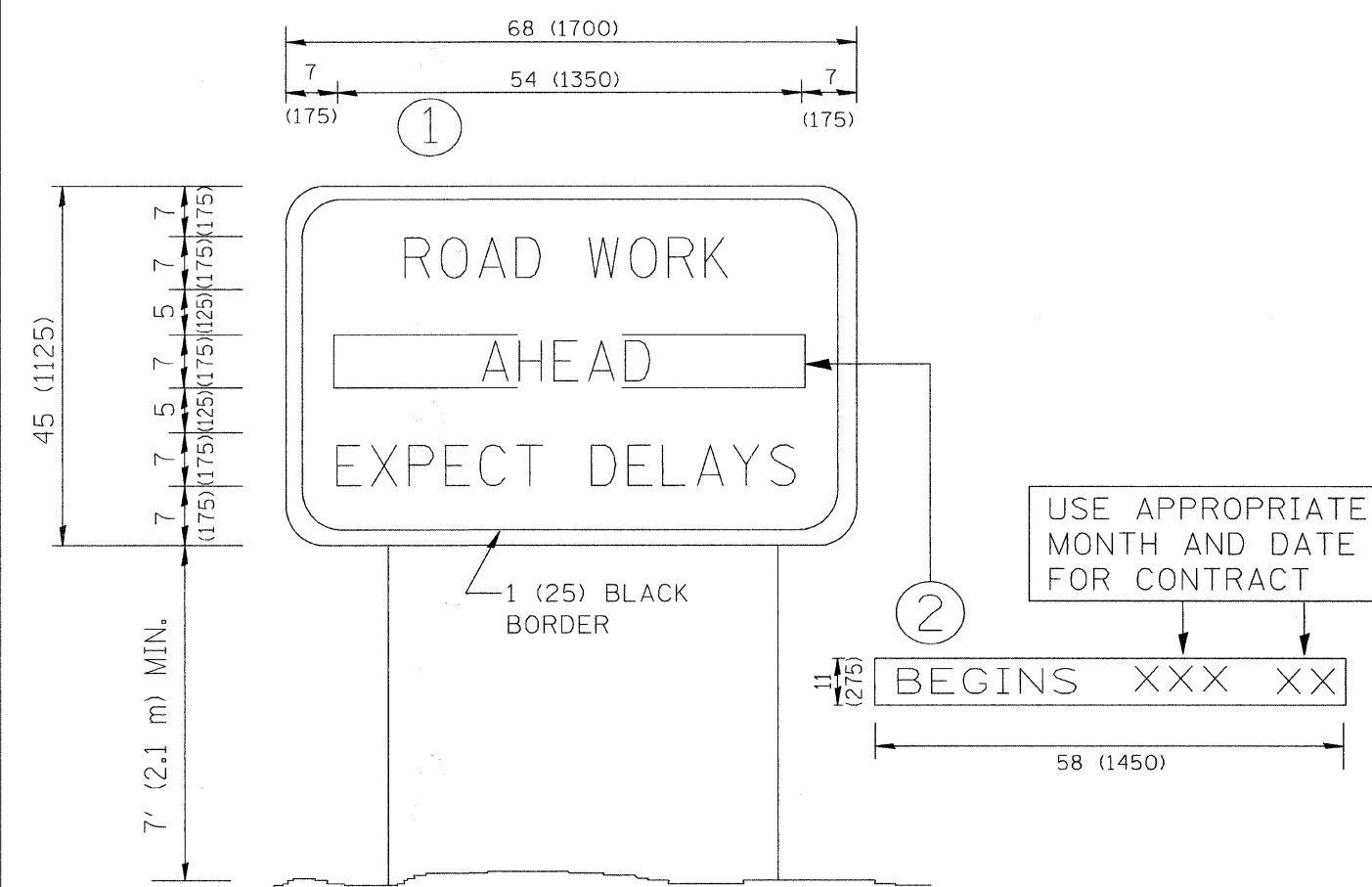
FOR FURTHER DETAILS ON PAVEMENT MARKING REFER TO STANDARD SPECIFICATIONS FOR ROAD AND BRIDGE CONSTRUCTION AND STATE STANDARD 780001.

All dimensions are in inches (millimeters) unless otherwise shown.

FILE NAME = 07434-1007-DTLS-05 - 01	USER NAME = drivakosgn	DESIGNED = EVERS	REVISED = T. RAMMACHER 10-27-94
		CHECKED =	REVISED = C. JUCIUS 09-09-09
	PLOT SCALE = 50.0000' / IN.	DRAWN =	REVISED =
	PLOT DATE = 9/9/2009	CHECKED =	REVISED =

STATE OF ILLINOIS
DEPARTMENT OF TRANSPORTATION

DISTRICT ONE		F.A.P. RTE.	SECTION	COUNTY	TOTAL SHEETS	SHEET NO.
TYPICAL PAVEMENT MARKINGS		0532	09-00008-00-SW	WILL	13	12
SCALE:		SHEET NO. 12 OF 13 SHEETS		STA.	TO STA.	
		TC-13		CONTRACT NO. 63309		
		FED. ROAD DIST. NO. 1	ILLINOIS	FED. AID PROJECT	C-91-675-09	



NOTES:

1. USE BLACK LETTERING ON ORANGE BACKGROUND.
2. ERECT SIGNS IN ADVANCE OF THE LOCATION FOR THE "ROAD CONSTRUCTION AHEAD" SIGN AT LOCATIONS AS DIRECTED BY THE ENGINEER.
3. ERECT SIGN ① WITH INSTALLED PANEL ② ONE WEEK PRIOR TO THE START OF CONSTRUCTION.
4. REMOVE PANEL ② SOON AFTER THE START OF CONSTRUCTION.
5. SEE SPECIAL PROVISION FOR "TEMPORARY INFORMATION SIGNING" FOR ADDITIONAL INFORMATION.
6. ONE SIGN ASSEMBLY EQUALS 25.70 SQ. FT. (2.3 SQ. M.)
7. SHALL BE PAID FOR AS TEMPORARY INFORMATION SIGNING.

ALL DIMENSIONS ARE IN INCHES (MILLIMETERS) UNLESS OTHERWISE SHOWN.

FILE NAME = W:\distctd\22x34\to22.dgn	USER NAME = gaglianobt	DESIGNED —	REVISED — R. MIRS 09-15-97	STATE OF ILLINOIS DEPARTMENT OF TRANSPORTATION	DISTRICT ONE ARTERIAL ROAD INFORMATION SIGN			F.A.P. RTE. 0632	SECTION 09-00009-00-SW	COUNTY WILL	TOTAL SHEETS 13	SHEET NO. 13
	PLOT SCALE = 50.000' / IN.	DRAWN —	REVISED — T. RAMMACHER 02-02-99		SCALE: NONE	SHEET NO. 13 OF 13 SHEETS	STA.	TO STA.	CONTRACT NO. 63309			
	PLOT DATE = 1/4/2008	CHECKED —	REVISED — C. JUXTUS 01-31-07		FED. ROAD DIST. NO. 1 ILLINOIS FED. AID PROJECT C-91-675-09							